



# Infor XA – Infor Development Framework Level 1 Concepts Guide

### **Important Notices**

The material contained in this publication (including any supplementary information) constitutes and contains confidential and proprietary information of Infor.

By gaining access to the attached, you acknowledge and agree that the material (including any modification, translation or adaptation of the material) and all copyright, trade secrets and all other right, title and interest therein, are the sole property of Infor and that you shall not gain right, title or interest in the material (including any modification, translation or adaptation of the material) by virtue of your review thereof other than the non-exclusive right to use the material solely in connection with and the furtherance of your license and use of software made available to your company from Infor pursuant to a separate agreement, the terms of which separate agreement shall govern your use of this material and all supplemental related materials ("Purpose").

In addition, by accessing the enclosed material, you acknowledge and agree that you are required to maintain such material in strict confidence and that your use of such material is limited to the Purpose described above. Although Infor has taken due care to ensure that the material included in this publication is accurate and complete, Infor cannot warrant that the information contained in this publication is complete, does not contain typographical or other errors, or will meet your specific requirements. As such, Infor does not assume and hereby disclaims all liability, consequential or otherwise, for any loss or damage to any person or entity which is caused by or relates to errors or omissions in this publication (including any supplementary information), whether such errors or omissions result from negligence, accident or any other cause.

Without limitation, U.S. export control laws and other applicable export and import laws govern your use of this material and you will neither export or re-export, directly or indirectly, this material nor any related materials or supplemental information in violation of such laws, or use such materials for any purpose prohibited by such laws.

### **Trademark Acknowledgements**

The word and design marks set forth herein are trademarks and/or registered trademarks of Infor and/or related affiliates and subsidiaries. All rights reserved. All other company, product, trade or service names referenced may be registered trademarks or trademarks of their respective owners.

### **Publication Information**

Release: Infor XA 9.1

Publication date: January 22, 2018

---

# Table of Contents

About this guide .....	iv
Intended audience .....	iv
Prerequisite.....	iv
Overview .....	1
Requirements .....	1
How to use IDF Level 1 .....	2
Navigating to IDF Level 1 functions.....	2
Working with IDF Level 1 windows and options.....	3
IDF Level 1 windows .....	3
IDF Level 1 menus .....	7
Logging off .....	11
Differences between IDF Level 1 and Power-Link.....	11
Customizations.....	12
Functions.....	13
Additional Tasks function.....	14
How to manage IDF Level 1 environments .....	18
Setting up the Host Presentation Server (HPS) process .....	18
Setting up session management.....	20
Understanding security and menus.....	21
Appendix A: Infor ERP XA Host Menu/Option and IDF Level 1 Task Cross-Reference .....	22
Appendix B: Infor ERP XA Host Menu/Option and Power-Link Application and Object Cross-Reference .....	92

## About this guide

This guide provides an overview of the Infor Development Framework Level 1 functions accessed through Infor ERP XA Power-Link.

### Intended audience

This guide is for system administrators and others who implement XA functions and for users who maintain item information in XA applications.

### Prerequisite

The functions described in this document require Infor ERP XA Release 9.

---

# Overview

The Infor Development Framework (IDF) has been extended in Release 9 to include two levels of function.

- IDF Level 1 is new for Release 9. IDF Level 1 is the graphical user interface available for Infor ERP XA applications that previously were accessible only through the XA System i-based interface. The IDF Level 1 interface is similar in appearance to the IDF Level 2 interface but performs with some differences.
- IDF Level 2 is the interface for Power-Link applications. This XA interface is highly customizable, with a unique level of flexibility for user control of application information.

The primary benefit for the XA applications enabled with the IDF Level 1 interface is the streamlined functioning between Power-Link applications and the XA applications enabled for IDF Level 1. Users have a more integrated flow when working with information in both Power-Link applications and the IDF Level 1 applications.

## Requirements

The IDF Level 1 functions have the following requirements.

- The Infor ERP XA environment must be licensed to Infor ERP XA Release 9 and to the Infor ERP XA Host Presentation Server product.
- Both the Power-Link application and corresponding XA System i application must be installed and interfacing. For example, to use the IDF Level 1 Purchasing functions, both the Procurement Management and Purchasing applications must be installed.
- For each XA environment running IDF Level 1, Link Manager must have a Host Process server running on an auxiliary machine. The auxiliary machine must be a Windows server (versions 2003 or 2008).

## How to use IDF Level 1

The IDF Level 1 functions can be accessed from Power-Link, but the way users work with these functions varies somewhat from the way users work with Power-Link application objects.

### Navigating to IDF Level 1 functions

XA provides access to the IDF Level 1 functions from the application card in Power-Link that contains related functions. For example, to access the IDF Level 1 Purchasing functions, users double-click the “Other Procurement Tasks” icon on the Procurement application card. This action opens a separate window that contains the IDF Level 1 options available from the Purchasing application.

Clicking an IDF Level 1 option to perform a task displays the information users must enter or options they must select to complete the selected task. When users complete the entries or selections, they do one of the following:

- Complete the task. Depending on the task selected, users might enter or select information on one window or on several windows. The buttons on the bottom of the screen provide the actions users take to proceed through the task. When all necessary user entries and selections are complete, XA processes the task and closes the IDF Level 1 task window. The user returns to the IDF Level 1 options where the action icon was selected.
- Stop the task. On most IDF Level 1 windows, the Exit or Cancel button performs this action. When a user exits from a task, the IDF Level 1 task window closes and the user returns to the IDF Level 1 options where the action icon was selected. Selecting the Exit option on the File menu or clicking the Close button at the top of the window generally has the same effect as using the Exit button on the IDF Level 1 window. If a window does not have an Exit option on the File menu, clicking the Close button causes a dialog to appear directing users to other menu options or buttons. When a user cancels a task, the user might return to a preceding window in the task to select another action or update to perform. For some tasks, the Cancel button works the same way as the Exit button and returns the user to the IDF Level 1 window where the action icon was selected. No data is created, saved, or deleted in most cases.

- Click Help to see information about the task. This action opens the help text for the action being performed. Users can click Exit or Cancel to return to the IDF Level 1 task window.

The processing of tasks from IDF Level 1 windows proceeds sequentially. Depending on the task, users might enter selection information on one window, and then proceed to another window to select an action to be performed for a selected record. Users proceed through the IDF Level 1 tasks by clicking buttons on the IDF Level 1 windows or by selecting options from the Functions menu.

See [Appendix A: Infor ERP XA Host Menu/Option and IDF Level 1 Task Cross-Reference](#) for information on Infor ERP XA host menus and options and the corresponding IDF Level 1 tasks. See [Appendix B: Infor ERP XA Host Menu/Option and Power-Link Application and Object Cross-Reference](#) for information on Infor ERP XA host menus and options and the corresponding Power-Link applications and objects

## Working with IDF Level 1 windows and options

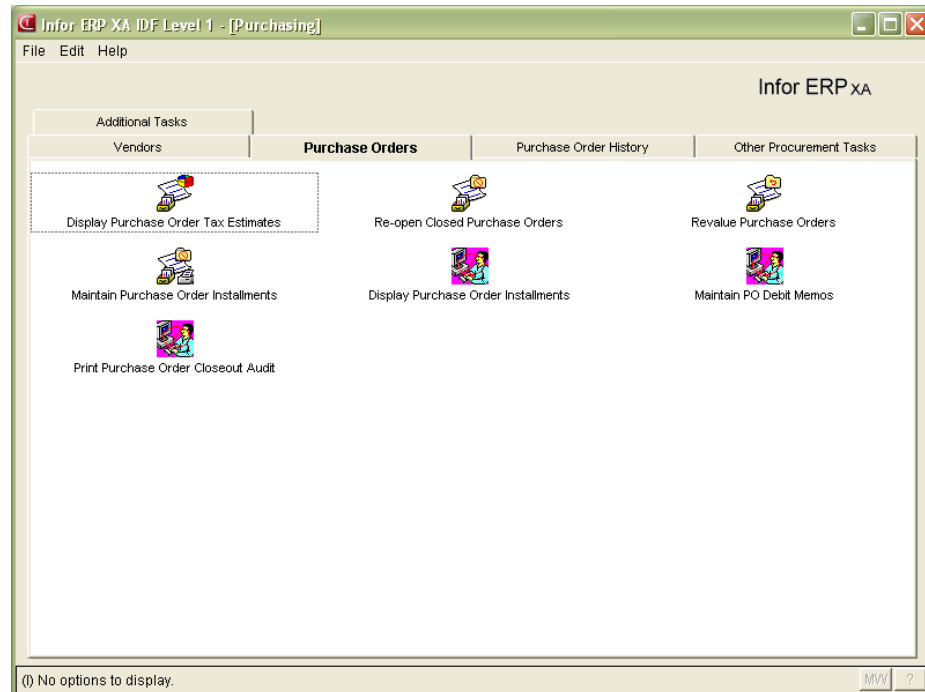
This section describes the elements of the IDF Level 1 interface, including the types of windows on which information displays and the types of actions users can perform.

### IDF Level 1 windows

The IDF Level 1 interface includes these types of windows.

## Application window

An application window contains icons that initiate application tasks. The icons are organized in groups, accessible by tabs. For example, the IDF Level 1 task icons for the Purchasing application are organized on the following tabs: Vendors, Purchase Orders, Purchase Order History, Other Procurement Tasks, and Additional Tasks.

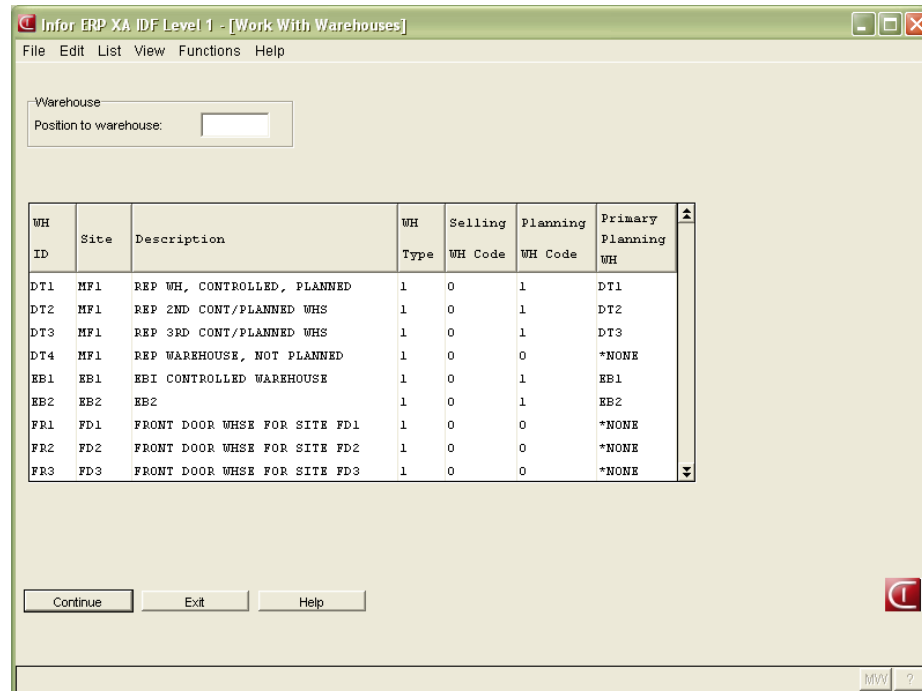


To start a task, click an icon. To see other application task icons, click a tab. To exit from an application window, go to the File menu and select the Exit option. The window closes. Any IDF Level 1 windows that are open for other tasks are not affected.



## List window

A list window contains information in a table form, with columns of information representing different attributes, and rows of information representing different records.



Users can work with information on a list window in several ways. To see the next set of records in the list, click the down arrow on the right edge of the list. To see the previous set of records, click the up arrow. To position the list to a particular record, enter the requested information in the Position to attribute above the list and click the Continue or Position button or the Enter key. To move a column in the list, select the column, press the Shift key, and drag the column to the required position.

To see the options available for working with records in the list, click on the row and select an option from the List menu or right-click a row in the list and select an option from the popup menu. The option selected from the List menu or the popup menu applies to the selected row.

Warehouse  
Position to warehouse:

WH ID	Site	Description
DT1	MF1	REP WH, CONTROLLED, PLANNED
DT2	MF1	REP WH, CONTROLLED, PLANNED WHS
DT3	MF1	REP WH, CONTROLLED, PLANNED WHS
DT4	MF1	REP WH, CONTROLLED, PLANNED WHS
EB1	EB1	EBI CONTROLLED WAREHOUSE

Additionally, clicking a row in the list initiates the default option for the list.

### Entry window

An entry window allows users to enter new values or change existing values.

When users finish entering information, they click an appropriate button to save the information or to proceed to the next window in the task. To end the task and return to the previous window or to the IDF Level 1 application window without saving any changes, users click a button such as the Exit or Cancel button.

### Display window

A display window shows requested information that cannot be changed. In some cases, the information shown has been entered into a record by users, such as a display window showing the history record for a manufacturing

order. In other cases, the information shown is generated by XA, not entered by users, such as the Item Availability window.

Infor ERP XA IDF Level 1 - [Item Availability]

File Edit Functions View Help

Item:  vWise:  MPA ASSEMBLY 101 MMDYY

Quantity on hand: 24414.000 Date 1:

Mfg allocations: .000 Date 2:

Pend mfg allocations: .000

SCHEDULED RECEIPTS			DATE 1	DATE 2	ALL	
ORDER/SCH	VEND/JOB	STAT	DUE DATE	9/10/09	10/30/09	OTHER
P000388	10	40	0/00/00	90.000	*BLANKET	
		10	3/17/05	10.000		
		10	3/24/05	10.000		
		10	3/31/05	10.000		
		10	4/07/05	10.000		
		10	4/14/05	10.000		
		10	4/21/05	10.000		
		10	4/28/05	10.000		
		10	5/05/05	10.000		
		10	5/12/05	10.000		

\*\*\* CONTINUED \*\*\*

Continue Page forward Exit Help

MVPY ?

The Page Forward and Page Backward buttons allow users to move through the information if more information exists than can be seen on the window at one time. The word **\*\*\* CONTINUED \*\*\*** appears in this case. On some display windows, users can enter values to change the scope of the information shown. For example, on the Item Availability window, users can enter different date ranges to see an item's availability on earlier or later dates, or enter a different item number to see availability for another item.

The Continue button returns users to the IDF Level 1 application window where they selected the option that opened the display window. For item, warehouse, or date selection information, the Continue button also is used to process changed information. The Exit button on this type of window also returns users to the IDF Level 1 application window.

## IDF Level 1 menus

The IDF Level 1 interface includes these menus. The set of menus and options available on an IDF Level 1 window varies by type of window and by the function or task performed from the window.

## File menu

The File menu appears on all IDF Level 1 windows. It contains options for actions that work the same on any windows on which the action appears.

File	Edit	Help
Reset		Ctrl+R
Synchronize		Ctrl+Y
Exit		Ctrl+F3

Option	Result
Reset (Ctrl + R)	Returns the window to the original state and discards any information entered on the window. Used when an error message requires the window to be reset in order to proceed with a task.
Synchronize (Ctrl + Y)	Possibly required in rare occasions if the host and client systems become disrupted.
Cancel (Ctrl + F12) (also occasionally F19)	Ends the action on the current IDF Level 1 window and returns to the previous window.
Exit (Ctrl + F3)	Ends the current action without processing and returns to the IDF Level 1 window where the user initiated the task.

## Edit menu

The Edit menu appears on all IDF Level 1 windows. It contains options for basic editing actions.

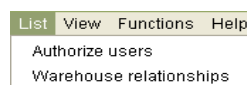
Edit	List	View	Fun
Undo			Ctrl+Z
Cut			Ctrl+X
Copy			Ctrl+C
Paste			Ctrl+V

Option	Result
Undo (Ctrl + Z)	Discards the last change a user made to information on the window.
Cut (Ctrl + X)	Copies and removes the selected text. Can be used to clear an attribute value on an IDF Level 1 window.

Option	Result
Copy (Ctrl + X)	Copies the selected text. Can be used to copy the value from a maintainable attribute in one application to a maintainable attribute in another application.
Paste (Ctrl + V)	Enters the copied text at the cursor location. Can be used to enter a value copied from one attribute to another attribute.

### List menu

The List menu appears on IDF Level 1 list windows. It contains options for actions that can be taken for a selected row in the list. The options on this menu vary, depending on the actions available for the information in the list. For example, for a list of warehouses, users can select a warehouse in the list and then select the Authorize users option to review and maintain the users allowed to work with information for that warehouse.



### View menu

The View menu can appear on any IDF Level 1 windows except application windows. It contains options for actions that can be taken to recreate or update the information shown on the window, such as Refresh, Reload, Subset or Advanced Subset. The options on this menu vary, depending on the actions available for the information shown on the window.



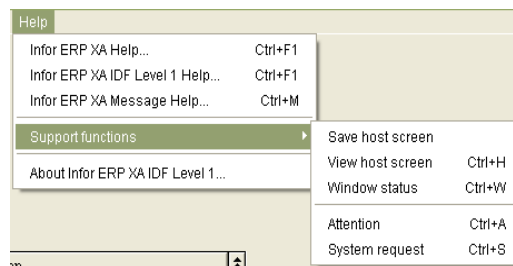
### Functions menu

The Functions menu appears on any IDF Level 1 windows which have specific actions related to the task performed on that window. The set of options on the Functions menu varies. Some actions initiated by these options are common to many tasks while other actions are only performed for the current task.

Functions	Help
Create	F6
Advanced subset...	Shift+F5
Work with text	Shift+F7

## Help menu

The Help menu appears on all IDF Level 1 windows. It contains options for actions that provide additional information for the current window, IDF Level 1 functions, and messages. Additional options on the Support functions submenu provide actions that can help when troubleshooting a problem.



These options are on the Help menu.

Option	Result
Infor ERP XA Help (Ctrl + F1)	Displays attribute-level help text for the attribute where the cursor is located.
Infor ERP XA IDF Level 1 Help (Ctrl + F1)	Displays general IDF Level 1 information.
Infor ERP XA Message Help (Ctrl + M)	Displays any detailed information associated with an error message.
About Infor ERP XA IDF Level 1	Displays information about the currently installed IDF Level 1 release level and copyright information.

These options are on the Support functions submenu.

**CAUTION:** Use the options on the Support functions submenu under the direction of Infor ERP XA Support. If another IDF Level 1 session is started from one of these options, the connection to Power-Link could be corrupted.

Option	Result
Save host screen	Saves an image of an IDF Level 1 window for use by Infor Support to diagnose a problem. Should be used at the request of a support representative.

Option	Result
View host screen (Ctrl + H)	Allows users to switch from the IDF Level 1 window to the Infor ERP XA screen on the System i. This option can also allow users to see additional details or a different arrangement of information than on the IDF Level 1 window, such as status information about the current job.
Window status (Ctrl + W)	Displays information about the current IDF Level 1 window, such as the display ID of the source Infor ERP XA window, processing mode, and environment ID.
Attention (Ctrl + A)	Suspends the current job and allows the user to run another job from the Group Jobs menu without canceling the initial job and without using other application menus. For example, this option is useful if a user needs to switch to another session or display job log information.
System request (Ctrl + S)	Interrupts the current job and allows users to log on to the System Request menu on the System i to do another task. When the second task is complete, the user returns to the IDF Level 1 window where the System Request option was selected.

## Logging off

When users log off Power-Link, they also log off automatically from IDF Level 1 functions. In order to log off Power-Link, however, all IDF Level 1 functions must be closed. If any IDF Level 1 functions are still open when a user tries to log off Power-Link, an error message will indicate that the user must exit from the IDF Level 1 functions before logging off.

## Differences between IDF Level 1 and Power-Link

While the IDF Level 1 functions are accessible from Power-Link, the IDF Level 1 options and windows work somewhat differently than Power-Link options and windows. This section identifies the primary differences.

## Customizations

While Power-Link windows support multiple types of customizations, the IDF Level 1 windows do not. Specifically, these Power-Link customizations are not available for IDF Level 1.

Customization	Power-Link	IDF Level 1
Lists	Allows users to customize columns, subset rows, and specify a sort sequence. Additional actions are available by right-clicking entries in the list.	Some lists support an Advanced subset option that allows users to specify criteria that restricts rows displayed in the list. As with Power-Link, additional actions are available by right-clicking entries in the list. Actions are also available from the List menu.
Cards	Allows users to rearrange cards displaying detailed information, move attributes among cards, add or remove cards, and create their own cards.	Cards displaying task icons cannot be changed.
Tabs	Users can specify where tabs appear: top, left, right, or bottom. The labels on the tabs can be customized	Tabs always appear on top of cards. The labels on the tabs cannot be changed.
Templates	Users can customize templates with required attributes and default values for create, change, and copy actions.	Templates are not supported.
Icons and bitmaps	Users can replace icons and bitmaps supplied by XA with their own files.	Icons and bitmaps cannot be changed.



## Functions

These Power-Link functions are not available for IDF Level 1.

Function	Power-Link	IDF Level 1
Broadcast and receive	Allows users to control information shown in one window with selections made in related window.	Not available.
Attachments	Allows users to associate files outside of XA with individual records in application objects, such as a graphic depicting a map of a warehouse location with an entry in the Warehouses object.	Not available.
Drag and drop	Allows users to perform maintenance by dragging a record from one object to another. For example, dragging and item record and dropping it on a vendor record initiates a Create Purchase Order transaction.	Not available for maintenance. Columns in lists can be rearranged by dragging and dropping.
Navigation History	Object that saves a history of user object actions during an XA session. Users can return to an object by selecting it in the Navigation History object. Users can also identify frequently used objects with a bookmark for quick access.	Not available.
Locate	Allows users to find records in an application object list window.	Not available. In some cases, the alpha-search function is available on IDF Level 1 windows that have F4 or F11 options on the Functions menu.

Function	Power-Link	IDF Level 1
Local print	Allows users to print a list of objects or the detailed information for a single object on a printer available on their local network.	Not available.
Mass maintenance options (Mass Change, Mass Delete, etc.)	Allows users to process actions against multiple object records at one time. For example, if a new buyer replaces a previous buyer, users can select all items for the previous buyer and use the Mass Change option to reassign those items to the new buyer.	Not available.
Host Jobs/ Host Reports	Options on the File menu that initiate job or report processing on the host system.	Not available. Host-side processes are available as task icons on application windows or as actions on the Functions menu.
Confirmation before update	At the completion of create, change, or copy functions, a confirmation dialog allows users to proceed with the action or cancel it. If the user chooses to proceed, the processing of the changes in the XA database then occurs.	Not available. IDF Level 1 actions update the XA database sequentially as the task progresses.

## Additional Tasks function

The IDF Level 1 application windows, which contain icons for starting IDF Level 1 tasks, are not maintainable like Power-Link windows. However, XA does include a way for users to add some often-used options to the IDF Level 1 application windows through the Additional Tasks tabs available on the application windows.

Users can use the Menu Maintenance function in Cross Application Support to control what options appear on the Additional Tasks tabs. For example, a user might want to display or work with the printed output of some of the report options available through the IDF Level 1 Payroll application window. In order to add an option to display reports, the user would need to add the option to the Additional Tasks tab on the IDF Level 1 Payroll application window.

Each tab on an IDF Level 1 application window has a corresponding Infor ERP XA menu. None of the tabs on an IDF Level 1 application window can be changed through the Menu Maintenance function except the Additional Tasks tab.

To add a task to an Additional Tasks tab, a user must:

- Determine the name of the XA menu that corresponds to the IDF Level 1 application window. The table in this section lists the names of the IDF Level 1 application windows and the corresponding Additional Tasks menu for each application window.
- Start the Work with Menus option. To navigate to this option, select the Other Cross Application Tasks option on the Environment tab in Power-Link. On the IDF Level 1 Cross Application Support application window, select the Menu Maintenance tab. On the Menu Maintenance tab, select the Work with Windows option.
- On the Work with Menus window, select the menu ID of the Additional Tasks tab for the required IDF Level 1 application window. The user can then maintain the options displayed on the selected Additional Tasks menu.

Be aware that an Additional Tasks tab can contain a maximum of 13 options.

The following table contains the XA menu IDs associated with the IDF Level 1 application windows.

IDF Level 1 application window	Additional Tasks menu ID
Forecasting Tasks	AM2UZZ
Electronic Commerce Tasks	AM4UZZ
Knowledge-Based Configurator Tasks	AMHUZZ
Master Production Schedule Planning Tasks	AMLUZZ
Payroll Tasks	AMPUZZ
Capacity Requirements Planning Tasks	AMTUZZ
Other Procurement Tasks	AM6UZZ

IDF Level 1 application window	Additional Tasks menu ID
CAS Maintenance Tasks	AMZUYY
CAS Backup/Recovery Tasks	AMZUZZ
Other AR Tasks	AMRUZZ
Other AP Tasks	AMAUZZ
Other GL Tasks	AMGUZZ
Customer Service GL Interface Tasks	AMBUAZ
Materials GL Interface Tasks	AMIUAZ
Order Based Production GL Interface Tasks	AMCUAZ
Rate Based Production GL Interface Tasks	AMQUAZ
InterSite Logistics Tasks	AXIUZZ
Multi-Environment Intersite Logistics Tasks	AXMUZZ
Other Customer Service Tasks	AMBU2Z
Other Customer Service Codes	AMBU7Z
Other Business Entity Tasks	AM5U0Z
Other AR Tasks	AM5U1Z
Other AP Tasks	AM5U3Z
Other GL Tasks	AM5U5Z
Other Accounting Code Tasks	AM5U6Z
Other Analysis Code Tasks	AM5U7Z
Bank Code Tasks	AM5U8Z
Other Transaction Code Tasks	AM5U9Z
Other Tax Code Tasks	AM5UAZ
Application Administration Tasks	AM5UBZ
Customer Service GL Interface Tasks	AMBUFZ
Materials GL Interface Tasks	AMIUFZ
Order Based Production GL Interface Tasks	AMCUFZ
Rate Based Production GL Interface Tasks	AMQUFZ
Material Planning Tasks	AMMUZZ
Data Collection Tasks	AMJUZZ

---

<b>IDF Level 1 application window</b>	<b>Additional Tasks menu ID</b>
Product Costing Tasks	AMEUZZ
Other Engineering Tasks	AMEUAZ
CAD Interface Tasks	AMDUZZ
Other Materials Tasks	AMIU1Z
Other AM Plus Tasks	AXGUZZ

## How to manage IDF Level 1 environments

For administrators, setting up and controlling Infor ERP XA environments with IDF Level 1 installed involves assigning the Host Presentation Server process (HPS) on Link Manager to an auxiliary machine and controlling the number of host sessions a user can run at the same time. The following sections describe these activities.

### Setting up the Host Presentation Server (HPS) process

The Host Presentation Server process (HPS) provides the functions that must be active in order to use the IDF Level 1 options and screens in an Infor ERP XA environment. An XA environment must have one instance of a Host Presentation Server process to support IDF Level 1.

The Host Presentation Server process must be located on an auxiliary machine. Additionally, the auxiliary machine must be an Intel-based server running Microsoft Windows Server 2003 or Windows Server 2008.

To set up the Host Presentation Server:

- 1** Set up the auxiliary machine if one does not exist or if a dedicated auxiliary machine will be used for the Host Presentation Server.
- 2** Install the server license key for Host Presentation Server on the host machine.
- 3** Install the Host Presentation Server for a selected environment. In Link Manager, select the environment to install the Host Presentation Server. On the Applications tab for the environment, select the Host Presentation Server, then select Change on the Maintain menu. On the Changed Installed Applications card file, select the Installed attribute on the General card to install the Host Presentation Server process.

After the Host Presentation Server has been installed, it is visible on the Processes list in Link Manager. Also, the Host Presentation Server must be installed to make the IDF Level 1 application icons visible in Power-Link.

- 4** In Link Manager, in the list of Processes for an environment, select the Host Presentation Server and assign it to an auxiliary machine. On the

General card for the environment, specify the auxiliary machine in the Assigned machine name attribute.

- The Host Presentation Server requires an auxiliary machine that is an Intel-based server running Microsoft Windows Server 2003 or Server 2008.
  - Infor ERP XA provides a default path for installation on a specified auxiliary machine. If you want to use an alternate path for installation, specify the path to use in the Host Presentation Server Install Path attribute on the General card for the process.
  - If the Host Presentation Server should start automatically when Link Manager starts, select the Autostart option. The Autostart option for the Host Presentation Server is available on the General card for the selected environment. This option is not specified at the process level.
- 5** In Link Manager, start the environment. If the Host Presentation Server has the Autostart option selected, the process starts automatically when the environment is started. If the Host Presentation Server does not have the Autostart option selected, start that environment process manually.

Be aware that loading the Host Presentation Server process on the auxiliary machine might take some time. See the Guide for Link Manager for information on managing processes in Link Manager.

If you need to run Host Presentation Server processes for multiple environments on the same auxiliary machine, all of the environments must be at the same XA client fix level. If you require environments with Host Presentation Server processes to be at different client fix levels, you must install the Host Presentation Server processes on different auxiliary machines.

When applying a new fix level to environments with Host Presentation Server processes on the same auxiliary machine, follow these steps:

- 1** In Link Manager, select each environment, and stop all environment processes for each of the environments that have Host Presentation Server processes running on the auxiliary machine.
- 2** In Link Manager, use the Apply Update option to apply the PTF fix to each environment. Be sure that the Restart environment option is **not** selected for any of the environments being updated.
- 3** When all of the environments have been updated to the same PTF fix level, you need to start the environments, one at a time. You also need to start the associated Host Presentation Server processes and any other environment processes if the Autostart option was not selected to start

those processes automatically with the environment. To start the environments, select the first environment and then select the Start option in the Environments object in Link Manager. To start processes that are not started automatically, select the Processes card for the first environment, then select the associated Host Presentation Server process and any other processes used by the environment, and click the Start button on the Processes card.

- 4 Continue to start each environment, the associated Host Presentation Server process, and any other environment processes as described in the previous step.

## Setting up session management

Underlying each IDF Level 1 session is a System i 5250 interactive session. The interactive session remains available until the user ends the Power-Link session. If a user exits from an IDF Level 1 window, the underlying interactive session is still running and is available for use if the user selects another IDF Level 1 task option. However, if the user exits from the IDF Level 1 window and then exits from Power-Link, the interactive session ends.

A user can have more than one IDF Level 1 session open at one time. However, to manage processing capacity efficiently, XA allows administrators to limit the number of IDF Level 1 sessions a user can have open simultaneously.

The Number of group jobs allowed attribute in the Working with XA user profiles function in the XA Cross Application Support application controls how many IDF Level 1 sessions a user can have open at one time. The Number of group jobs allowed can be set to any number from 0 to 16. The default value is 0. Users are allowed to have one more IDF Level 1 session open than the number of group jobs allowed. For example, if a user profile has the Number of group jobs allowed attribute set to 0, the user is still allowed to have one IDF Level 1 session open at a time. If the Number of group jobs allowed attribute is set to 9, the user is allowed to have 10 IDF Level 1 sessions open at one time. The maximum limit for the Number of group jobs allowed attribute is 16; the maximum number of IDF Level 1 sessions that a user can have open at one time is 17.

If a user does not have a user profile or is not assigned to a user profile group, the user can have only two IDF Level 1 sessions open at one time. If a user tries to open more IDF Level 1 sessions than allowed, a message appears indicating the limit for the number of sessions has been reached and a session for the IDF Level 1 task does not start.



## Understanding security and menus

The IDF Level 1 menus reference existing task definition security records in the Cross Application Support application. All existing security authorizations for Infor ERP XA System i options apply to the corresponding IDF Level 1 options.

The IDF Level 1 menus have a naming convention that identifies the type of IDF Level 1 menu. The fourth character in the menu ID indicates whether the menu can be maintained by users. Menu IDs that have the letter I as the fourth character indicate menus are provided by XA and cannot be changed. Menu IDs that have the letter U for the fourth character indicate Additional Tasks menus that are available for users to add up to 13 additional functions to an IDF Level 1 application window. Users add the additional functions to an Additional Tasks application window through the Menu Maintenance option available in IDF Level 1 Cross Application Support. See the “Additional Tasks function” section for more information.

## Appendix A: Infor ERP XA Host Menu/Option and IDF Level 1 Task Cross-Reference

XA Host Menu	Host Menu Option	Host Option/IDF Level 1 Task	Power-Link Application	Power-Link Application Tab	Power-Link Icon / IDF Level 1 Menu	IDF Level 1 Tab
AM2M10	1	Forecast Master Inquiry	Planning		Forecasting	Inquiry and File Maintenance
AM2M10	2	Forecast Master Update	Planning		Forecasting	Inquiry and File Maintenance
AM2M10	3	Seasonal Group Profile	Planning		Forecasting	Inquiry and File Maintenance
AM2M10	4	Life Cycle Profile	Planning		Forecasting	Inquiry and File Maintenance
AM2M10	5	Forecast Control	Planning		Forecasting	Inquiry and File Maintenance
AM2M10	6	Mass Maintenance	Planning		Forecasting	Inquiry and File Maintenance
AM2M10	7	Item Summary Maintenance	Planning		Forecasting	Inquiry and File Maintenance
AM2M10	8	Forecast Activity Maintenance	Planning		Forecasting	Inquiry and File Maintenance
AM2M20	1	Period Demand Data Capture	Planning		Forecasting	Period Update
AM2M20	2	Forecast Master Reconciliation	Planning		Forecasting	Period Update
AM2M20	3	Forecast Calculation	Planning		Forecasting	Period Update
AM2M20	4	Inventory Parameter Calculation	Planning		Forecasting	Period Update
AM2M20	5	Forecast Load to Master Schedule	Planning		Forecasting	Period Update
AM2M30	1	Summaries by Value Class	Planning		Forecasting	Forecast Reporting (Year 1)
AM2M30	2	Summaries by Product Line	Planning		Forecasting	Forecast Reporting (Year 1)
AM2M30	3	Exceptions by Value Class	Planning		Forecasting	Forecast Reporting (Year 1)
AM2M30	4	Exceptions by Product Line	Planning		Forecasting	Forecast Reporting (Year 1)
AM2M30	5	Detail by Value Class	Planning		Forecasting	Forecast Reporting (Year 1)
AM2M30	6	Detail by Product Line	Planning		Forecasting	Forecast Reporting (Year 1)
AM2M40	1	Summaries by Value Class	Planning		Forecasting	Projection Reporting (Years 2 & 3)
AM2M40	2	Summaries by Product Line	Planning		Forecasting	Projection Reporting (Years 2 & 3)
AM2M40	3	Summaries by Life Cycle Profile Code	Planning		Forecasting	Projection Reporting (Years 2 & 3)
AM2M40	4	Detail by Value Class	Planning		Forecasting	Projection Reporting (Years 2 & 3)

XA Host Menu	Host Menu Option	Host Option/IDF Level 1 Task	Power-Link Application	Power-Link Application Tab	Power-Link Icon / IDF Level 1 Menu	IDF Level 1 Tab
AM2M40	5	Detail by Product Line	Planning		Forecasting	Projection Reporting (Years 2 & 3)
AM2M40	6	Detail by Life Cycle Profile Code	Planning		Forecasting	Projection Reporting (Years 2 & 3)
AM2M50	1	Demand History Extract and Update	Planning		Forecasting	Seasonal Update
AM2M50	2	Seasonal Parameter Maintenance	Planning		Forecasting	Seasonal Update
AM2M50	3	Item Demand History Maintenance	Planning		Forecasting	Seasonal Update
AM2M50	4	Seasonal Profile Calculation	Planning		Forecasting	Seasonal Update
AM2M50	5	Seasonal Profile Report	Planning		Forecasting	Seasonal Update
AM2M50	6	Save Seasonal Update Data	Planning		Forecasting	Seasonal Update
AM4M10	1	Manually Send Transactions to Translator	Environment	Settings	Electronic Commerce	Send Transactions
AM4M10	2	Re-edit and Prepare Error Transactions for Send	Environment	Settings	Electronic Commerce	Send Transactions
AM4M20	1	Receive Transactions from Translator	Environment	Settings	Electronic Commerce	Receive Transactions
AM4M20	2	Edit / Load Transactions	Environment	Settings	Electronic Commerce	Receive Transactions
AM4M20	3	Re-edit / Load Error Transactions	Environment	Settings	Electronic Commerce	Receive Transactions
AM4M30	1	Work with Trading Partners (Master & Profile)	Environment	Settings	Electronic Commerce	Work with EDI
AM4M30	2	Work with Sent/Received Transactions	Environment	Settings	Electronic Commerce	Work with EDI
AM4M30	3	Work with Error Log	Environment	Settings	Electronic Commerce	Work with EDI
AM4M30	4	Work with Translator Definitions	Environment	Settings	Electronic Commerce	Work with EDI
AM4M30	5	Work with Transaction Set Report Formats	Environment	Settings	Electronic Commerce	Work with EDI
AM4M40	1	Trading Partner Transaction Set - General Data	Environment	Settings	Electronic Commerce	Other File Maintenance
AM4M40	2	Trading Partner Transaction Set - Control File	Environment	Settings	Electronic Commerce	Other File Maintenance
AM4M40	3	Interface File Purge	Environment	Settings	Electronic Commerce	Other File Maintenance
AM4M40	4	Error Log Purge	Environment	Settings	Electronic Commerce	Other File Maintenance
AM4M40	6	Work with Trans Set Keyword Codes (Turnaround)	Environment	Settings	Electronic Commerce	Other File Maintenance

XA Host Menu	Host Menu Option	Host Option/IDF Level 1 Task	Power-Link Application	Power-Link Application Tab	Power-Link Icon / IDF Level 1 Menu	IDF Level 1 Tab
AM4M45	1	Maintain EC Install Defaults	Environment	Settings	Electronic Commerce	Setup Details
AM4M45	2	Maintain Transaction Set Control File Defaults	Environment	Settings	Electronic Commerce	Setup Details
AM4M45	3	Maintain Routing Table Defaults	Environment	Settings	Electronic Commerce	Setup Details
AM4M45	4	EC Messaging Support - Maintain Department & User	Environment	Settings	Electronic Commerce	Setup Details
AM4M45	5	EC Messaging Support - Maintain Department by TS	Environment	Settings	Electronic Commerce	Setup Details
AM5M10	1	Maintain Transactions	Finance	Accounts Receivable	Other AR Tasks	AR Transactions
AM5M10	1	Maintain Transactions	Finance	Accounts Receivable	Other AR Tasks	Cash Transactions
AM5M10	1	Maintain Transactions	Finance	Accounts Payable	Other AP Tasks	AP Transactions
AM5M10	1	Maintain Transactions	Finance	Accounts Payable	Other AP Tasks	Cash Transactions
AM5M10	1	Maintain Transactions	Finance	General Ledger	Other GL Tasks	Create General Ledger Transaction
AM5M10	2	Work with Batch Transactions	Finance	Accounts Receivable	Other AR Tasks	AR Transactions
AM5M10	2	Work with Batch Transactions	Finance	Accounts Receivable	Other AR Tasks	Cash Transactions
AM5M10	2	Work with Batch Transactions	Finance	Accounts Payable	Other AP Tasks	AP Transactions
AM5M10	2	Work with Batch Transactions	Finance	Accounts Payable	Other AP Tasks	Cash Transactions
AM5M10	2	Work with Batch Transactions	Finance	General Ledger	Other GL Tasks	Create General Ledger Transaction
AM5M10	3	Create Invoice	Finance	Accounts Receivable	Other AR Tasks	AR Transactions
AM5M10	3	Create Invoice	Finance	Accounts Payable	Other AP Tasks	AP Transactions

XA Host Menu	Host Menu Option	Host Option/IDF Level 1 Task	Power-Link Application	Power-Link Application Tab	Power-Link Icon / IDF Level 1 Menu	IDF Level 1 Tab
AM5M10	4	Create Cash Transaction	Finance	Accounts Receivable	Other AR Tasks	Cash Transactions
AM5M10	4	Create Cash Transaction	Finance	Accounts Payable	Other AP Tasks	Cash Transactions
AM5M10	5	Create General Ledger Transaction	Finance	General Ledger	Other GL Tasks	Create General Ledger Transaction
AM5M10	6	Apply Cash to Invoices	Finance	Accounts Receivable	Other AR Tasks	Cash Transactions
AM5M10	6	Apply Cash to Invoices	Finance	Accounts Payable	Other AP Tasks	Cash Transactions
AM5M10	7	Work with Payment Lists	Finance	Accounts Payable	Other AP Tasks	AP Transactions
AM5M10	7	Work with Payment Lists	Finance	Accounts Payable	Other AP Tasks	Cash Transactions
AM5M20	01	Create Invoice	Finance	Accounts Receivable	Other AR Tasks	AR Transactions
AM5M20	02	Maintain Transactions	Finance	Accounts Receivable	Other AR Tasks	AR Transactions
AM5M20	03	Work with Batch Transactions	Finance	Accounts Receivable	Other AR Tasks	AR Transactions
AM5M20	04	Create Cash Transaction	Finance	Accounts Receivable	Other AR Tasks	Cash Transactions
AM5M20	05	Apply Cash to Invoices	Finance	Accounts Receivable	Other AR Tasks	Cash Transactions
AM5M20	7	Display Statistics	Finance	Accounts Receivable	Other AR Tasks	Personal Accounts
AM5M20	7	Display Statistics	Finance	Accounts Payable	Other AP Tasks	Personal Accounts
AM5M26	1	Work with Repeating Transactions	Finance	Accounts Receivable	Other AR Tasks	AR Transactions
AM5M26	1	Work with Repeating Transactions	Finance	Accounts Receivable	Other AR Tasks	Cash Transactions

XA Host Menu	Host Menu Option	Host Option/IDF Level 1 Task	Power-Link Application	Power-Link Application Tab	Power-Link Icon / IDF Level 1 Menu	IDF Level 1 Tab
AM5M26	1	Work with Repeating Transactions	Finance	Accounts Payable	Other AP Tasks	AP Transactions
AM5M26	1	Work with Repeating Transactions	Finance	Accounts Payable	Other AP Tasks	Cash Transactions
AM5M26	1	Work with Repeating Transactions	Finance	General Ledger	Other GL Tasks	Create General Ledger Transaction
AM5M26	2	Work with Lock-Box Cash Receipts	Finance	Accounts Receivable	Other AR Tasks	Cash Transactions
AM5M26	3	Work with Note Generation Lists	Finance	Accounts Receivable	Other AR Tasks	AR Transactions
AM5M26	3	Work with Note Generation Lists	Finance	Accounts Payable	Other AP Tasks	Note Transactions
AM5M26	4	Work with Note Collection Lists	Finance	Accounts Receivable	Other AR Tasks	AR Transactions
AM5M26	4	Work with Note Collection Lists	Finance	Accounts Payable	Other AP Tasks	Note Transactions
AM5M26	5	Work with Interdivision Transfers	Finance	Business Entities	Other Business Entity Tasks	Interdivision Trade Partnerships
AM5M26	5	Work with Interdivision Transfers	Finance	Accounts Receivable	Other AR Tasks	Interdivision Trade Partnerships
AM5M26	5	Work with Interdivision Transfers	Finance	Accounts Payable	Other AP Tasks	Interdivision Trade Partnerships
AM5M26	6	Clear Cash In Transit	Finance	Accounts Receivable	Other AR Tasks	Cash Transactions
AM5M26	6	Clear Cash In Transit	Finance	Accounts Payable	Other AP Tasks	Cash Transactions
AM5M26	7	Log Bank Returns	Finance	Accounts Receivable	Other AR Tasks	Cash Transactions
AM5M26	7	Log Bank Returns	Finance	Accounts Payable	Other AP Tasks	Cash Transactions
AM5M26	8	Review My Approvals	Finance	Accounts Receivable	Other AR Tasks	Transaction Approvals

XA Host Menu	Host Menu Option	Host Option/IDF Level 1 Task	Power-Link Application	Power-Link Application Tab	Power-Link Icon / IDF Level 1 Menu	IDF Level 1 Tab
AM5M26	8	Review My Approvals	Finance	Accounts Payable	Other AP Tasks	Transaction Approvals
AM5M26	8	Review My Approvals	Finance	General Ledger	Other GL Tasks	Transaction Approvals
AM5M26	9	Review Approvals	Finance	Accounts Receivable	Other AR Tasks	Transaction Approvals
AM5M26	9	Review Approvals	Finance	Accounts Payable	Other AP Tasks	Transaction Approvals
AM5M26	9	Review Approvals	Finance	General Ledger	Other GL Tasks	Transaction Approvals
AM5M26	10	Maintain Transactions	Finance	Accounts Receivable	Other AR Tasks	AR Transactions
AM5M2B	3	Confirm Collection Statuses	Finance	Accounts Receivable	Other AR Tasks	Personal Accounts
AM5M2B	4	Work with Collection Letters	Finance	Accounts Receivable	Other AR Tasks	Personal Accounts
AM5M2C	1	Accrue Unposted Transactions	Finance	Accounts Receivable	Other AR Tasks	AR Transactions
AM5M2C	1	Accrue Unposted Transactions	Finance	Accounts Receivable	Other AR Tasks	Cash Transactions
AM5M2C	1	Accrue Unposted Transactions	Finance	Accounts Payable	Other AP Tasks	AP Transactions
AM5M2C	1	Accrue Unposted Transactions	Finance	Accounts Payable	Other AP Tasks	Cash Transactions
AM5M2C	1	Accrue Unposted Transactions	Finance	General Ledger	Other GL Tasks	Create General Ledger Transaction
AM5M2C	2	Reverse Accrue Unposted Transactions	Finance	Accounts Receivable	Other AR Tasks	AR Transactions
AM5M2C	2	Reverse Accrue Unposted Transactions	Finance	Accounts Receivable	Other AR Tasks	Cash Transactions
AM5M2C	2	Reverse Accrue Unposted Transactions	Finance	Accounts Payable	Other AP Tasks	AP Transactions

XA Host Menu	Host Menu Option	Host Option/IDF Level 1 Task	Power-Link Application	Power-Link Application Tab	Power-Link Icon / IDF Level 1 Menu	IDF Level 1 Tab
AM5M2C	2	Reverse Accrue Unposted Transactions	Finance	Accounts Payable	Other AP Tasks	Cash Transactions
AM5M2C	2	Reverse Accrue Unposted Transactions	Finance	General Ledger	Other GL Tasks	Create General Ledger Transaction
AM5M2C	3	Accrue Installment Interest	Finance	Accounts Receivable	Other AR Tasks	AR Transactions
AM5M2C	3	Accrue Installment Interest	Finance	Accounts Payable	Other AP Tasks	AP Transactions
AM5M2C	5	Generate Finance Charge Invoices	Finance	Accounts Receivable	Other AR Tasks	AR Transactions
AM5M2C	6	Generate Exchange Gain/Loss Transaction	Finance	Accounts Receivable	Other AR Tasks	AR Transactions
AM5M2C	6	Generate Exchange Gain/Loss Transaction	Finance	Accounts Payable	Other AP Tasks	AP Transactions
AM5M2C	7	Generate Late Payment Interest Invoices	Finance	Accounts Receivable	Other AR Tasks	AR Transactions
AM5M2C	8	Work with Audit Confirmation Letters	Finance	Accounts Receivable	Other AR Tasks	Personal Accounts
AM5M2C	8	Work with Audit Confirmation Letters	Finance	Accounts Payable	Other AP Tasks	Personal Accounts
AM5M30	01	Create Invoice	Finance	Accounts Receivable	Other AR Tasks	AR Transactions
AM5M30	02	Maintain Transactions	Finance	Accounts Receivable	Other AR Tasks	AR Transactions
AM5M30	03	Work with Batch Transactions	Finance	Accounts Receivable	Other AR Tasks	AR Transactions
AM5M30	04	Work with Payment Lists	Finance	Accounts Payable	Other AP Tasks	AP Transactions
AM5M30	06	Display Statistics	Finance	Accounts Receivable	Other AR Tasks	Personal Accounts
AM5M35	01	Work with Repeating Transactions	Finance	Accounts Receivable	Other AR Tasks	AR Transactions



XA Host Menu	Host Menu Option	Host Option/IDF Level 1 Task	Power-Link Application	Power-Link Application Tab	Power-Link Icon / IDF Level 1 Menu	IDF Level 1 Tab
AM5M35	02	Work with Note Generation Lists	Finance	Accounts Receivable	Other AR Tasks	AR Transactions
AM5M35	03	Work with Note Collection Lists	Finance	Accounts Receivable	Other AR Tasks	AR Transactions
AM5M35	4	Revalidate PO Invoices	Finance	Accounts Payable	Other AP Tasks	AP Transactions
AM5M35	5	Generate GRN Invoices	Finance	Accounts Payable	Other AP Tasks	AP Transactions
AM5M35	6	Generate GRN Invoices	Finance	Accounts Payable	Other AP Tasks	AP Transactions
AM5M35	07	Create Cash Transaction	Finance	Accounts Receivable	Other AR Tasks	Cash Transactions
AM5M35	08	Clear Cash In Transit	Finance	Accounts Receivable	Other AR Tasks	Cash Transactions
AM5M35	09	Review My Approvals	Finance	Accounts Receivable	Other AR Tasks	Transaction Approvals
AM5M35	10	Review Approvals	Finance	Accounts Receivable	Other AR Tasks	Transaction Approvals
AM5M35	11	Audit Check Numbers	Finance	Accounts Payable	Other AP Tasks	Checks
AM5M35	12	Transfer Cash	Finance	Accounts Payable	Other AP Tasks	Cash Transactions
AM5M35	13	Log Bank Returns	Finance	Accounts Receivable	Other AR Tasks	Cash Transactions
AM5M35	14	Maintain Transactions	Finance	Accounts Receivable	Other AR Tasks	AR Transactions
AM5M3A	01	Accrue Unposted Transactions	Finance	Accounts Receivable	Other AR Tasks	AR Transactions
AM5M3A	02	Accrue Installment Interest	Finance	Accounts Receivable	Other AR Tasks	AR Transactions
AM5M3A	3	Apply Prepayments	Finance	Accounts Payable	Other AP Tasks	AP Transactions

XA Host Menu	Host Menu Option	Host Option/IDF Level 1 Task	Power-Link Application	Power-Link Application Tab	Power-Link Icon / IDF Level 1 Menu	IDF Level 1 Tab
AM5M3A	04	Reverse Accrue Unposted Transactions	Finance	Accounts Receivable	Other AR Tasks	AR Transactions
AM5M3A	05	Generate Exchange Gain/Loss Transaction	Finance	Accounts Receivable	Other AR Tasks	AR Transactions
AM5M3A	6	Offset Interdivision Transfer Invoices	Finance	Business Entities	Other Business Entity Tasks	Interdivision Trade Partnerships
AM5M3A	6	Offset Interdivision Transfer Invoices	Finance	Accounts Receivable	Other AR Tasks	Interdivision Trade Partnerships
AM5M3A	6	Offset Interdivision Transfer Invoices	Finance	Accounts Payable	Other AP Tasks	Interdivision Trade Partnerships
AM5M3A	09	Work with Audit Confirmation Letters	Finance	Accounts Receivable	Other AR Tasks	Personal Accounts
AM5M3A	10	Work with 1099 Tax Accumulation	Finance	Accounts Receivable	Other AR Tasks	Transaction Taxes
AM5M3A	10	Work with 1099 Tax Accumulation	Finance	Accounts Payable	Other AP Tasks	Transaction Taxes
AM5M3B	1	Work with Bank Statements	Finance	Accounts Receivable	Other AR Tasks	Cash Books
AM5M3B	1	Work with Bank Statements	Finance	Accounts Payable	Other AP Tasks	Cash Books
AM5M3B	2	Import Bank Statement	Finance	Accounts Receivable	Other AR Tasks	Cash Books
AM5M3B	2	Import Bank Statement	Finance	Accounts Payable	Other AP Tasks	Cash Books
AM5M3B	3	Reconcile Cash	Finance	Accounts Receivable	Other AR Tasks	Cash Transactions
AM5M3B	3	Reconcile Cash	Finance	Accounts Payable	Other AP Tasks	Cash Transactions
AM5M3B	04	Clear Cash In Transit	Finance	Accounts Receivable	Other AR Tasks	Cash Transactions
AM5M3B	05	Maintain Transactions	Finance	Accounts Receivable	Other AR Tasks	AR Transactions

XA Host Menu	Host Menu Option	Host Option/IDF Level 1 Task	Power-Link Application	Power-Link Application Tab	Power-Link Icon / IDF Level 1 Menu	IDF Level 1 Tab
AM5M40	01	Create General Ledger Transaction	Finance	General Ledger	Other GL Tasks	Create General Ledger Transaction
AM5M40	02	Maintain Transactions	Finance	Accounts Receivable	Other AR Tasks	AR Transactions
AM5M40	03	Work with Batch Transactions	Finance	Accounts Receivable	Other AR Tasks	AR Transactions
AM5M40	8	Print General Ledger Report	Finance	General Ledger	Other GL Tasks	General Ledgers
AM5M40	14	Control General Ledger Updates	Finance	Administration	Application Administration Tasks	Application Administration
AM5M44	01	Work with Repeating Transactions	Finance	Accounts Receivable	Other AR Tasks	AR Transactions
AM5M44	03	Review My Approvals	Finance	Accounts Receivable	Other AR Tasks	Transaction Approvals
AM5M44	04	Review Approvals	Finance	Accounts Receivable	Other AR Tasks	Transaction Approvals
AM5M44	05	Maintain Transactions	Finance	Accounts Receivable	Other AR Tasks	AR Transactions
AM5M47	1	Work with Budgets	Finance	General Ledger	Other GL Tasks	Budgets
AM5M47	2	Maintain Budget Profiles	Finance	General Ledger	Other GL Tasks	Budgets
AM5M49	01	Apply Prepayments	Finance	Accounts Payable	Other AP Tasks	AP Transactions
AM5M49	02	Accrue Unposted Transactions	Finance	Accounts Receivable	Other AR Tasks	AR Transactions
AM5M49	03	Reverse Accrue Unposted Transactions	Finance	Accounts Receivable	Other AR Tasks	AR Transactions
AM5M49	04	Generate Exchange Gain/Loss Transaction	Finance	Accounts Receivable	Other AR Tasks	AR Transactions
AM5M49	5	Record Balance Sheet Exchange Gain/Loss	Finance	General Ledger	Other GL Tasks	Foreign Currency Accounts

XA Host Menu	Host Menu Option	Host Option/IDF Level 1 Task	Power-Link Application	Power-Link Application Tab	Power-Link Icon / IDF Level 1 Menu	IDF Level 1 Tab
AM5M49	6	Generate Opening Balances	Finance	General Ledger	Other GL Tasks	General Ledgers
AM5M49	7	Translate GL Account Balances (FAS52)	Finance	General Ledger	Other GL Tasks	General Ledgers
AM5M49	8	Reclassify GL Account Balances	Finance	General Ledger	Other GL Tasks	General Ledgers
AM5M49	9	Reclassify Balances	Finance	Accounts Receivable	Other AR Tasks	AR Ledgers
AM5M49	9	Reclassify Balances	Finance	Accounts Payable	Other AP Tasks	AP Ledgers
AM5M49	10	Reassign Journal Numbers	Finance	Accounts Receivable	Other AR Tasks	AR Transactions
AM5M49	10	Reassign Journal Numbers	Finance	Accounts Receivable	Other AR Tasks	Cash Transactions
AM5M49	10	Reassign Journal Numbers	Finance	Accounts Payable	Other AP Tasks	AP Transactions
AM5M49	10	Reassign Journal Numbers	Finance	Accounts Payable	Other AP Tasks	Cash Transactions
AM5M49	10	Reassign Journal Numbers	Finance	General Ledger	Other GL Tasks	Create General Ledger Transaction
AM5M49	11	Revalue Foreign Currency Ledger Balances	Finance	General Ledger	Other GL Tasks	Foreign Currency Accounts
AM5M4Y	1	Apportionment Criteria	Finance	Transaction Codes	Other Transaction Code Tasks	Apportionment Codes
AM5M4Y	2	Apportionments	Finance	Transaction Codes	Other Transaction Code Tasks	Apportionment Codes
AM5M4Y	4	Work with Apportionment Requests	Finance	General Ledger	Other GL Tasks	General Ledgers
AM5M4Y	4	Work with Apportionment Requests	Finance	General Ledger	Other GL Tasks	Budgets
AM5M4Y	05	Maintain Transactions	Finance	Accounts Receivable	Other AR Tasks	AR Transactions

XA Host Menu	Host Menu Option	Host Option/IDF Level 1 Task	Power-Link Application	Power-Link Application Tab	Power-Link Icon / IDF Level 1 Menu	IDF Level 1 Tab
AM5M50	1	Period Structures	Finance	Analysis Codes	Other Analysis Code Tasks	Analysis Codes
AM5M50	2	Unit Structures	Finance	Analysis Codes	Other Analysis Code Tasks	Analysis Codes
AM5M50	3	Nature Structures	Finance	Analysis Codes	Other Analysis Code Tasks	Analysis Codes
AM5M54	3	Value Formats	Finance	Accounting Codes	Other Accounting Code Tasks	Accounting Codes
AM5M61	1	Maintain Administrative Divisions	Finance	Business Entities	Other Business Entity Tasks	Business Entities
AM5M61	2	Natures	Finance	Accounting Codes	Other Accounting Code Tasks	Accounting Codes
AM5M61	3	Periods	Finance	Accounting Codes	Other Accounting Code Tasks	Accounting Codes
AM5M61	4	Maintain Financial Divisions	Finance	Business Entities	Other Business Entity Tasks	Business Entities
AM5M61	5	Maintain Units	Finance	Business Entities	Other Business Entity Tasks	Business Entities
AM5M61	6	Unit Nature Combinations	Finance	Accounting Codes	Other Accounting Code Tasks	Accounting Codes
AM5M61	7	Maintain Interdivision Accounts	Finance	Business Entities	Other Business Entity Tasks	Interdivision Trade Partnerships
AM5M61	7	Maintain Interdivision Accounts	Finance	Accounts Receivable	Other AR Tasks	Interdivision Trade Partnerships
AM5M61	7	Maintain Interdivision Accounts	Finance	Accounts Payable	Other AP Tasks	Interdivision Trade Partnerships
AM5M61	8	Maintain Ledgers	Finance	Accounts Receivable	Other AR Tasks	AR Ledgers
AM5M61	8	Maintain Cash Books	Finance	Accounts Receivable	Other AR Tasks	Cash Books
AM5M61	8	Maintain Ledgers	Finance	Accounts Payable	Other AP Tasks	AP Ledgers
AM5M61	8	Maintain Cash Books	Finance	Accounts Payable	Other AP Tasks	Cash Books

XA Host Menu	Host Menu Option	Host Option/IDF Level 1 Task	Power-Link Application	Power-Link Application Tab	Power-Link Icon / IDF Level 1 Menu	IDF Level 1 Tab
AM5M61	8	Maintain Ledgers	Finance	General Ledger	Other GL Tasks	General Ledgers
AM5M61	10	Charges	Finance	Transaction Codes	Other Transaction Code Tasks	Transaction Codes
AM5M63	4	Maintain Allocation Entities	Finance	Business Entities	Other Business Entity Tasks	Business Entities
AM5M63	8	Withholding Methods	Finance	Tax Codes	Other Tax Code Tasks	Tax Codes
AM5M63	9	Work with Interdivision Trade Partners	Finance	Business Entities	Other Business Entity Tasks	Interdivision Trade Partnerships
AM5M63	9	Work with Interdivision Trade Partners	Finance	Accounts Receivable	Other AR Tasks	Interdivision Trade Partnerships
AM5M63	9	Work with Interdivision Trade Partners	Finance	Accounts Payable	Other AP Tasks	Interdivision Trade Partnerships
AM5M63	10	Create Multiple Personal Accounts	Finance	Accounts Receivable	Other AR Tasks	Personal Accounts
AM5M63	10	Create Multiple Personal Accounts	Finance	Accounts Payable	Other AP Tasks	Personal Accounts
AM5M64	1	Public Holiday Sets	Finance	Transaction Codes	Other Transaction Code Tasks	Settlement Codes
AM5M64	3	Settlement Terms	Finance	Transaction Codes	Other Transaction Code Tasks	Settlement Codes
AM5M64	5	Aging Structures	Finance	Analysis Codes	Other Analysis Code Tasks	Analysis Codes
AM5M64	7	Settlement Methods	Finance	Transaction Codes	Other Transaction Code Tasks	Settlement Codes
AM5M64	9	Note Methods	Finance	Transaction Codes	Other Transaction Code Tasks	Settlement Codes
AM5M64	10	Installment Methods	Finance	Transaction Codes	Other Transaction Code Tasks	Settlement Codes
AM5M64	11	Installment Percent Methods	Finance	Transaction Codes	Other Transaction Code Tasks	Settlement Codes
AM5M65	1	Currencies	Finance	Accounting Codes	Other Accounting Code Tasks	Accounting Codes

XA Host Menu	Host Menu Option	Host Option/IDF Level 1 Task	Power-Link Application	Power-Link Application Tab	Power-Link Icon / IDF Level 1 Menu	IDF Level 1 Tab
AM5M65	2	Maintain Exchange Rate Sets	Finance	Transaction Codes	Other Transaction Code Tasks	Exchange Rates
AM5M65	3	Maintain Exchange Rates	Finance	Transaction Codes	Other Transaction Code Tasks	Exchange Rates
AM5M65	4	Maintain Currency Contracts	Finance	Transaction Codes	Other Transaction Code Tasks	Exchange Rates
AM5M65	5	Maintain Foreign Currency Accounts	Finance	General Ledger	Other GL Tasks	Foreign Currency Accounts
AM5M65	6	Enter Exchange Rates	Finance	Transaction Codes	Other Transaction Code Tasks	Exchange Rates
AM5M65	7	Simulate Currency Conversion	Finance	Transaction Codes	Other Transaction Code Tasks	Exchange Rates
AM5M66	1	Bank Account Formats	Finance	Business Entity Codes	Bank Code Tasks	Bank Codes
AM5M66	3	Bank Instruction Codes	Finance	Business Entity Codes	Bank Code Tasks	Bank Codes
AM5M66	4	Bank Transaction Types	Finance	Business Entity Codes	Bank Code Tasks	Bank Codes
AM5M66	5	Maintain Banks	Finance	Business Entities	Other Business Entity Tasks	Business Entities
AM5M66	6	Maintain Ledgers	Finance	Accounts Receivable	Other AR Tasks	Cash Books
AM5M66	6	Maintain Ledgers	Finance	Accounts Payable	Other AP Tasks	Cash Books
AM5M66	7	Bank Transmittal Codes	Finance	Business Entity Codes	Bank Code Tasks	Bank Codes
AM5M67	01	Apportionment Criteria	Finance	Transaction Codes	Other Transaction Code Tasks	Apportionment Codes
AM5M67	02	Apportionments	Finance	Transaction Codes	Other Transaction Code Tasks	Apportionment Codes
AM5M67	4	GL Reclassification Sets	Finance	Accounting Codes	Other Accounting Code Tasks	Accounting Codes

XA Host Menu	Host Menu Option	Host Option/IDF Level 1 Task	Power-Link Application	Power-Link Application Tab	Power-Link Icon / IDF Level 1 Menu	IDF Level 1 Tab
AM5M67	5	Books	Finance	Accounting Codes	Other Accounting Code Tasks	Accounting Codes
AM5M67	6	Journal Types	Finance	Accounting Codes	Other Accounting Code Tasks	Accounting Codes
AM5M68	1	Transaction Templates	Finance	Transaction Codes	Other Transaction Code Tasks	Transaction Codes
AM5M68	2	Document Types	Finance	Transaction Codes	Other Transaction Code Tasks	Transaction Codes
AM5M68	3	Transaction Types	Finance	Transaction Codes	Other Transaction Code Tasks	Transaction Codes
AM5M68	04	Books	Finance	Accounting Codes	Other Accounting Code Tasks	Accounting Codes
AM5M68	05	Journal Types	Finance	Accounting Codes	Other Accounting Code Tasks	Accounting Codes
AM5M68	6	Transaction Controls	Finance	Transaction Codes	Other Transaction Code Tasks	Transaction Codes
AM5M68	9	Transaction Line Controls	Finance	Transaction Codes	Other Transaction Code Tasks	Transaction Codes
AM5M69	2	Tax Group Codes	Finance	Tax Codes	Other Tax Code Tasks	Tax Codes
AM5M69	3	Tax Code Results	Finance	Tax Codes	Other Tax Code Tasks	Tax Codes
AM5M69	8	Item Tax Classes	Finance	Tax Codes	Other Tax Code Tasks	Tax Codes
AM5M69	9	Tax Transaction Types	Finance	Tax Codes	Other Tax Code Tasks	Tax Codes
AM5M69	10	Tax Condition Priorities	Finance	Tax Codes	Other Tax Code Tasks	Tax Codes
AM5M69	11	Simulate Tax Calculation	Finance	Tax Codes	Other Tax Code Tasks	Tax Codes
AM5M69	13	1099 Tax Report Classes	Finance	Tax Codes	Other Tax Code Tasks	Tax Codes
AM5M69	14	1099 Boxes	Finance	Tax Codes	Other Tax Code Tasks	Tax Codes
AM5M70	01	Display Statistics	Finance	Accounts Receivable	Other AR Tasks	Personal Accounts
AM5M70	2	View Balances	Finance	Accounts Receivable	Other AR Tasks	Cash Books
AM5M70	2	View Balances	Finance	Accounts Payable	Other AP Tasks	Cash Books



XA Host Menu	Host Menu Option	Host Option/IDF Level 1 Task	Power-Link Application	Power-Link Application Tab	Power-Link Icon / IDF Level 1 Menu	IDF Level 1 Tab
AM5M70	4	Print Transaction Document	Finance	Accounts Receivable	Other AR Tasks	Print Transactions and Reports
AM5M70	4	Print Transaction Document	Finance	Accounts Payable	Other AP Tasks	Print Transactions and Reports
AM5M70	4	Print Transaction Document	Finance	General Ledger	Other GL Tasks	Create General Ledger Transaction
AM5M70	5	Maintain Entity Diaries	Finance	Business Entities	Other Business Entity Tasks	Business Entities
AM5M70	06	Simulate Tax Calculation	Finance	Tax Codes	Other Tax Code Tasks	Tax Codes
AM5M70	7	Display Customer Order Tax Estimates	Finance	Accounts Receivable	Other AR Tasks	Transaction Taxes
AM5M70	7	Display Purchase Order Tax Estimates	Finance	Accounts Payable	Other AP Tasks	Transaction Taxes
AM5M71	1	Subjects to Withholding	Finance	Tax Codes	Other Tax Code Tasks	Multiple Tax Withholding Codes
AM5M71	2	Withholding Calculations	Finance	Tax Codes	Other Tax Code Tasks	Multiple Tax Withholding Codes
AM5M71	3	Withholding Sequences	Finance	Tax Codes	Other Tax Code Tasks	Multiple Tax Withholding Codes
AM5M71	4	Graduated Taxes	Finance	Tax Codes	Other Tax Code Tasks	Multiple Tax Withholding Codes
AM5M71	5	Cumulative Graduated Taxes	Finance	Tax Codes	Other Tax Code Tasks	Multiple Tax Withholding Codes
AM5M71	6	Withholding Invoice Instructions	Finance	Tax Codes	Other Tax Code Tasks	Multiple Tax Withholding Codes
AM5M80	1	Print Transactions List	Finance	Accounts Receivable	Other AR Tasks	Print Transactions and Reports
AM5M80	1	Print Transactions List	Finance	Accounts Payable	Other AP Tasks	Print Transactions and Reports
AM5M80	1	Print Transactions List	Finance	General Ledger	Other GL Tasks	Create General Ledger Transaction
AM5M80	02	Print General Ledger Report	Finance	General Ledger	Other GL Tasks	General Ledgers
AM5M80	3	Print Lodgements/Deposits Report	Finance	Accounts Receivable	Other AR Tasks	Print Transactions and Reports
AM5M80	4	Generate Cash Commitment Analysis	Finance	Accounts Receivable	Other AR Tasks	Print Transactions and Reports

XA Host Menu	Host Menu Option	Host Option/IDF Level 1 Task	Power-Link Application	Power-Link Application Tab	Power-Link Icon / IDF Level 1 Menu	IDF Level 1 Tab
AM5M80	4	Generate Cash Commitment Analysis	Finance	Accounts Payable	Other AP Tasks	Print Transactions and Reports
AM5M80	5	Print Tax Analysis	Finance	Accounts Receivable	Other AR Tasks	Transaction Taxes
AM5M80	5	Print Tax Analysis	Finance	Accounts Payable	Other AP Tasks	Transaction Taxes
AM5M80	7	Print Personal Accounts Exceptions Report	Finance	Accounts Receivable	Other AR Tasks	Personal Accounts
AM5M80	8	Print Disputed Invoices Report	Finance	Accounts Receivable	Other AR Tasks	Print Transactions and Reports
AM5M80	8	Print Disputed Invoices Report	Finance	Accounts Payable	Other AP Tasks	Print Transactions and Reports
AM5M80	9	Print Tax Reconciliation Worksheet	Finance	Accounts Receivable	Other AR Tasks	Transaction Taxes
AM5M80	9	Print Tax Reconciliation Worksheet	Finance	Accounts Payable	Other AP Tasks	Transaction Taxes
AM5M91	1	Maintain Currencies	Finance	Transaction Codes	Other Transaction Code Tasks	Exchange Rates
AM5M91	02	Value Formats	Finance	Accounting Codes	Other Accounting Code Tasks	Accounting Codes
AM5M91	03	Maintain Administrative Divisions	Finance	Business Entities	Other Business Entity Tasks	Business Entities
AM5M91	4	Maintain Users	Finance	Administration	Application Administration Tasks	Application Administration
AM5M91	05	Maintain Exchange Rate Sets	Finance	Transaction Codes	Other Transaction Code Tasks	Exchange Rates
AM5M91	6	Maintain Users	Finance	Administration	Application Administration Tasks	Application Administration
AM5M91	07	Periods	Finance	Accounting Codes	Other Accounting Code Tasks	Accounting Codes
AM5M91	8	Period Structures	Finance	Analysis Codes	Other Analysis Code Tasks	Analysis Codes

XA Host Menu	Host Menu Option	Host Option/IDF Level 1 Task	Power-Link Application	Power-Link Application Tab	Power-Link Icon / IDF Level 1 Menu	IDF Level 1 Tab
AM5M91	9	Maintain Administrative Divisions	Finance	Business Entities	Other Business Entity Tasks	Business Entities
AM5M91	10	Natures	Finance	Accounting Codes	Other Accounting Code Tasks	Accounting Codes
AM5M91	11	Transaction Templates	Finance	Transaction Codes	Other Transaction Code Tasks	Transaction Codes
AM5M91	12	Document Types	Finance	Transaction Codes	Other Transaction Code Tasks	Transaction Codes
AM5M91	13	Transaction Types	Finance	Transaction Codes	Other Transaction Code Tasks	Transaction Codes
AM5M91	14	Maintain Financial Divisions	Finance	Business Entities	Other Business Entity Tasks	Business Entities
AM5M91	15	Maintain Units	Finance	Business Entities	Other Business Entity Tasks	Business Entities
AM5M91	16	Maintain Financial Divisions	Finance	Business Entities	Other Business Entity Tasks	Business Entities
AM5M91	17	Unit Nature Combinations	Finance	Accounting Codes	Other Accounting Code Tasks	Accounting Codes
AM5M91	18	Maintain Interdivision Accounts	Finance	Business Entities	Other Business Entity Tasks	Interdivision Trade Partnerships
AM5M91	19	Maintain Financial Divisions	Finance	Business Entities	Other Business Entity Tasks	Business Entities
AM5M91	20	Maintain Ledgers	Finance	Accounts Receivable	Other AR Tasks	AR Ledgers
AM5M91	20	Maintain Ledgers	Finance	Accounts Receivable	Other AR Tasks	Cash Books
AM5M91	20	Maintain Ledgers	Finance	Accounts Payable	Other AP Tasks	AP Ledgers
AM5M91	20	Maintain Ledgers	Finance	Accounts Payable	Other AP Tasks	Cash Books
AM5M91	20	Maintain Ledgers	Finance	General Ledger	Other GL Tasks	General Ledgers

XA Host Menu	Host Menu Option	Host Option/IDF Level 1 Task	Power-Link Application	Power-Link Application Tab	Power-Link Icon / IDF Level 1 Menu	IDF Level 1 Tab
AM5M91	21	Transaction Controls	Finance	Transaction Codes	Other Transaction Code Tasks	Transaction Codes
AM5M92	01	Bank Account Formats	Finance	Business Entity Codes	Bank Code Tasks	Bank Codes
AM5M92	03	Bank Instruction Codes	Finance	Business Entity Codes	Bank Code Tasks	Bank Codes
AM5M92	04	Bank Transmittal Codes	Finance	Business Entity Codes	Bank Code Tasks	Bank Codes
AM5M92	5	Maintain Banks	Finance	Business Entities	Other Business Entity Tasks	Business Entities
AM5M92	06	Bank Transaction Types	Finance	Business Entity Codes	Bank Code Tasks	Bank Codes
AM5M92	07	Document Types	Finance	Transaction Codes	Other Transaction Code Tasks	Transaction Codes
AM5M92	08	Settlement Methods	Finance	Transaction Codes	Other Transaction Code Tasks	Settlement Codes
AM5M92	9	Maintain Ledgers	Finance	Accounts Receivable	Other AR Tasks	Cash Books
AM5M92	9	Maintain Ledgers	Finance	Accounts Payable	Other AP Tasks	Cash Books
AM5M92	10	Maintain Users	Finance	Administration	Application Administration Tasks	Application Administration
AM5M92	11	Transaction Controls	Finance	Transaction Codes	Other Transaction Code Tasks	Transaction Codes
AM5M95	03	Charges	Finance	Transaction Codes	Other Transaction Code Tasks	Transaction Codes
AM5M95	04	1099 Tax Report Classes	Finance	Tax Codes	Other Tax Code Tasks	Tax Codes
AM5M95	5	Installment Methods	Finance	Transaction Codes	Other Transaction Code Tasks	Settlement Codes
AM5M95	07	Public Holiday Sets	Finance	Transaction Codes	Other Transaction Code Tasks	Settlement Codes

XA Host Menu	Host Menu Option	Host Option/IDF Level 1 Task	Power-Link Application	Power-Link Application Tab	Power-Link Icon / IDF Level 1 Menu	IDF Level 1 Tab
AM5M95	09	Settlement Terms	Finance	Transaction Codes	Other Transaction Code Tasks	Settlement Codes
AM5M95	10	Document Types	Finance	Transaction Codes	Other Transaction Code Tasks	Transaction Codes
AM5M95	12	Transaction Types	Finance	Transaction Codes	Other Transaction Code Tasks	Transaction Codes
AM5M95	13	Aging Structures	Finance	Analysis Codes	Other Analysis Code Tasks	Analysis Codes
AM5M95	14	Maintain Ledgers	Finance	Accounts Receivable	Other AR Tasks	AR Ledgers
AM5M95	14	Maintain Ledgers	Finance	Accounts Payable	Other AP Tasks	AP Ledgers
AM5M95	15	Maintain Users	Finance	Administration	Application Administration Tasks	Application Administration
AM5M95	17	Note Methods	Finance	Transaction Codes	Other Transaction Code Tasks	Settlement Codes
AM5M95	18	Withholding Methods	Finance	Tax Codes	Other Tax Code Tasks	Tax Codes
AM5M95	21	Maintain Allocation Entities	Finance	Business Entities	Other Business Entity Tasks	Business Entities
AM5M95	22	Work with Interdivision Trade Partners	Finance	Business Entities	Other Business Entity Tasks	Interdivision Trade Partnerships
AM5M95	23	Installment Percent Methods	Finance	Transaction Codes	Other Transaction Code Tasks	Settlement Codes
AM5MA0	1	Maintain Applications	Finance	Administration	Application Administration Tasks	Application Administration
AM5MA0	2	Control Task Security	Finance	Administration	Application Administration Tasks	Application Administration
AM5MA0	3	Maintain Tasks	Finance	Administration	Application Administration Tasks	Application Administration
AM5MA0	4	Maintain Users	Finance	Administration	Application Administration Tasks	Application Administration
AM5MA0	5	Control Application Exits	Finance	Administration	Application Administration Tasks	Application Administration

XA Host Menu	Host Menu Option	Host Option/IDF Level 1 Task	Power-Link Application	Power-Link Application Tab	Power-Link Icon / IDF Level 1 Menu	IDF Level 1 Tab
AM5MA0	05	Activate Application Exits	Customer Service	Customer Service	Other Customer Service Tasks	Application Administration
AM5MA0	05	Activate Application Exits	Customer Service	Customer Service	Other Customer Service Tasks	Application Administration
AM5MA0	6	Display Period Password	Finance	Accounting Codes	Other Accounting Code Tasks	Accounting Codes
AM5MA0	8	Maintain Payment Programs	Finance	Administration	Application Administration Tasks	Application Administration
AM5MA0	10	Display Foreign Currency Ledger Balance	Finance	General Ledger	Other GL Tasks	Foreign Currency Accounts
AM5MA0	11	Maintain Offline Transaction Types	Finance	Accounts Receivable	Other AR Tasks	Offline Transactions
AM5MA0	11	Maintain Offline Transaction Types	Finance	Accounts Payable	Other AP Tasks	Offline Transactions
AM5MA0	11	Maintain Offline Transaction Types	Finance	General Ledger	Other GL Tasks	Offline Transactions
AM5MA0	12	Work with Offline Transactions	Finance	Accounts Receivable	Other AR Tasks	Offline Transactions
AM5MA0	12	Work with Offline Transactions	Finance	Accounts Payable	Other AP Tasks	Offline Transactions
AM5MA0	12	Work with Offline Transactions	Finance	General Ledger	Other GL Tasks	Offline Transactions
AM5MB0	1	Work with Archive Procedures	Finance	Administration	Application Administration Tasks	Application Administration
AM5MB0	2	Display Audit Stamps	Finance	Administration	Application Administration Tasks	Application Administration
AM5MB0	4	Delete Archive Jobs	Finance	Administration	Application Administration Tasks	Application Administration
AM5MB0	9	Work with Finance Jobs	Finance	Administration	Application Administration Tasks	Application Administration
AM5MC0	01	Create Cash Transaction	Finance	Accounts Receivable	Other AR Tasks	Cash Transactions

XA Host Menu	Host Menu Option	Host Option/IDF Level 1 Task	Power-Link Application	Power-Link Application Tab	Power-Link Icon / IDF Level 1 Menu	IDF Level 1 Tab
AM5MC0	2	Deposit Deferred Checks	Finance	Accounts Receivable	Other AR Tasks	Deferred Checks
AM5MC0	3	Endorse Deferred Checks	Finance	Accounts Payable	Other AP Tasks	Checks
AM5MC0	4	Discount Deferred Checks	Finance	Accounts Receivable	Other AR Tasks	Deferred Checks
AM5MC0	5	Void Checks	Finance	Accounts Payable	Other AP Tasks	Checks
AM5MC0	6	Hold Deferred Checks	Finance	Accounts Receivable	Other AR Tasks	Deferred Checks
AM6M00	10	Revalue Purchase Orders	Procurement	Procurement	Other Procurement Tasks	Purchase Orders
AM6M00	10	Revalue Quotes and Contracts	Procurement	Procurement	Other Procurement Tasks	Other Procurement Tasks
AM6M10	4	Maintain Purchase Order Installments	Procurement	Procurement	Other Procurement Tasks	Purchase Orders
AM6M10	4	Maintain PO Debit Memos	Procurement	Procurement	Other Procurement Tasks	Purchase Orders
AM6M10	7	Print Debit Memos	Procurement	Procurement	Other Procurement Tasks	Other Procurement Tasks
AM6M10	8	Print Travellers	Materials Management	Inventory	Other Materials Tasks	Other Materials Tasks
AM6M10	11	Print Transaction Register	Materials Management	Inventory	Other Materials Tasks	Inventory Transactions
AM6M10	12	Create Shipping Schedule	Procurement	Procurement	Other Procurement Tasks	Other Procurement Tasks
AM6M20	1	Maintain Invoices and Credit Memos	AM Plus	Accounts Payable	Other AP Tasks	AP Transactions
AM6M20	2	Maintain Offline Invoices and CR Memos	AM Plus	Accounts Payable	Other AP Tasks	Offline Transactions
AM6M20	3	Process Invoices and Credit Memos	AM Plus	Accounts Payable	Other AP Tasks	AP Transactions
AM6M20	4	Post Invoices and Credit Memos	AM Plus	Accounts Payable	Other AP Tasks	AP Transactions
AM6M20	5	Receive EDI Invoices	AM Plus	Accounts Payable	Other AP Tasks	Offline Transactions

XA Host Menu	Host Menu Option	Host Option/IDF Level 1 Task	Power-Link Application	Power-Link Application Tab	Power-Link Icon / IDF Level 1 Menu	IDF Level 1 Tab
AM6M20	6	Print Invoice Reports	AM Plus	Accounts Payable	Other AP Tasks	AP Transactions
AM6M30	1	Display Purchase Order Tax Estimates	Procurement	Procurement	Other Procurement Tasks	Purchase Orders
AM6M30	1	Display Purchase Order Installments	Procurement	Procurement	Other Procurement Tasks	Purchase Orders
AM6M30	1	Display Purchase Order Installments	Procurement	Procurement	Other Procurement Tasks	Purchase Order History
AM6M30	4	Maintain Vendor 1099-MISC Settings	Procurement	Procurement	Other Procurement Tasks	Vendors
AM6M40	2	Print Requisition Analysis	Procurement	Procurement	Other Procurement Tasks	Other Procurement Tasks
AM6M40	3	Print Buyer Item Worksheet	Procurement	Procurement	Other Procurement Tasks	Other Procurement Tasks
AM6M40	5	Dock to Stock Work List	Materials Management	Inventory	Other Materials Tasks	Other Materials Tasks
AM6M40	7	Print Purchase Order Closeout Audit	Procurement	Procurement	Other Procurement Tasks	Purchase Orders
AM6M40	8	Print Invoice Reports	AM Plus	Accounts Payable	Other AP Tasks	AP Transactions
AM6M40	8	Print Procurement Cash Commitments	AM Plus	Accounts Payable	Other AP Tasks	Cash Transactions
AM6M40	8	Print Procurement Cash Commitments	Finance	Accounts Payable	Other AP Tasks	Cash Books
AM6M40	9	Print Debit Memo Report	Procurement	Procurement	Other Procurement Tasks	Other Procurement Tasks
AM6M40	10	Print Vendor Analysis by Vendor	Procurement	Procurement	Other Procurement Tasks	Vendors
AM6M40	11	Print Vendor Analysis by Amount	Procurement	Procurement	Other Procurement Tasks	Vendors
AM6M40	12	Print Invoice Reports	AM Plus	Accounts Payable	Other AP Tasks	AP Transactions
AM6M50	2	Archive Purchase Order History	Procurement	Procurement	Other Procurement Tasks	Purchase Order History
AM6M50	3	Restore Archived Purchase Order History	Procurement	Procurement	Other Procurement Tasks	Purchase Order History
AM6M50	4	Delete Restored Purchase Order History	Procurement	Procurement	Other Procurement Tasks	Purchase Order History
AM6M50	5	Delete Purchase Order History Archive	Procurement	Procurement	Other Procurement Tasks	Purchase Order History



XA Host Menu	Host Menu Option	Host Option/IDF Level 1 Task	Power-Link Application	Power-Link Application Tab	Power-Link Icon / IDF Level 1 Menu	IDF Level 1 Tab
AM6M60	02	Maintain Vendor 1099-MISC Settings	Procurement	Accounts Payable	Other Procurement Tasks	Vendors
AM6M60	11	Maintain General Ledger	AM Plus	Accounts Payable	Other AP Tasks	General Ledger
AM6M60	11	Maintain General Ledger	AM Plus	General Ledger	Other GL Tasks	General ledger
AM6M60	14	Maintain Default Ship-Vias	Procurement	Procurement	Other Procurement Tasks	Other Procurement Tasks
AM6M70	12	Print Chart of Accounts	AM Plus	Accounts Receivable	Other AR Tasks	General Ledger
AM6M70	12	Print Chart of Accounts	AM Plus	Accounts Payable	Other AP Tasks	General Ledger
AM6M70	12	Print Chart of Accounts	AM Plus	General Ledger	Other GL Tasks	General ledger
AM6M80	1	Print Temporary General Ledger	AM Plus	Accounts Payable	Other AP Tasks	General Ledger
AM6M80	2	Print and Clear Temporary General Ledger	AM Plus	Accounts Payable	Other AP Tasks	General Ledger
AM6M90	4	Work with Purchase Planning Schedules	Procurement	Procurement	Other Procurement Tasks	Other Procurement Tasks
AMAM00	3	Reconcile Cash	AM Plus	Accounts Payable	Other AP Tasks	Cash Transactions
AMAM00	11	Revalue AP Invoices	AM Plus	Accounts Payable	Other AP Tasks	AP Transactions
AMAM10	1	Maintain Invoices and Credit Memos	AM Plus	Accounts Payable	Other AP Tasks	AP Transactions
AMAM10	2	Maintain Offline Invoices and Credit Memos	AM Plus	Accounts Payable	Other AP Tasks	Offline Transactions
AMAM10	3	Process Invoices and Credit Memos	AM Plus	Accounts Payable	Other AP Tasks	AP Transactions
AMAM10	4	Post Invoices and Credit Memos	AM Plus	Accounts Payable	Other AP Tasks	AP Transactions

XA Host Menu	Host Menu Option	Host Option/IDF Level 1 Task	Power-Link Application	Power-Link Application Tab	Power-Link Icon / IDF Level 1 Menu	IDF Level 1 Tab
AMAM10	5	Receive EDI Invoices	AM Plus	Accounts Payable	Other AP Tasks	Offline Transactions
AMAM10	6	Create Recurring Invoices	AM Plus	Accounts Payable	Other AP Tasks	AP Transactions
AMAM20	1	Enter Payment Selections	AM Plus	Accounts Payable	Other AP Tasks	Cash Transactions
AMAM20	2	Print Cash Requirements Report	AM Plus	Accounts Payable	Other AP Tasks	Cash Transactions
AMAM20	3	Print Checks or Create Payment Files	AM Plus	Accounts Payable	Other AP Tasks	Cash Transactions
AMAM20	4	Enter Manual Payments	AM Plus	Accounts Payable	Other AP Tasks	Cash Transactions
AMAM20	5	Enter Payment Reversals	AM Plus	Accounts Payable	Other AP Tasks	Cash Transactions
AMAM40	2	Print Vendor Analysis Report	AM Plus	Accounts Payable	Other AP Tasks	Vendor
AMAM40	3	Print Vendor Business Analysis Report	AM Plus	Accounts Payable	Other AP Tasks	Vendor
AMAM42	1	Print Invoices by Vendor	AM Plus	Accounts Payable	Other AP Tasks	AP Transactions
AMAM42	2	Print Halted Invoices by Vendor	AM Plus	Accounts Payable	Other AP Tasks	AP Transactions
AMAM42	3	Print Vendor Invoices	AM Plus	Accounts Payable	Other AP Tasks	AP Transactions
AMAM42	4	Print Vendor Halted Invoices	AM Plus	Accounts Payable	Other AP Tasks	AP Transactions
AMAM42	5	Print Invoices by Due Date	AM Plus	Accounts Payable	Other AP Tasks	AP Transactions
AMAM42	6	Print Detail Aged Payables	AM Plus	Accounts Payable	Other AP Tasks	Cash Transactions
AMAM42	7	Print Summary Aged Payables	AM Plus	Accounts Payable	Other AP Tasks	Cash Transactions

XA Host Menu	Host Menu Option	Host Option/IDF Level 1 Task	Power-Link Application	Power-Link Application Tab	Power-Link Icon / IDF Level 1 Menu	IDF Level 1 Tab
AMAM50	1	Print Temporary General Ledger	AM Plus	Accounts Payable	Other AP Tasks	General Ledger
AMAM50	2	Print and Clear Temporary General Ledger	AM Plus	Accounts Payable	Other AP Tasks	General Ledger
AMAM60	1	Print Vendors Year-End List	AM Plus	Accounts Payable	Other AP Tasks	Vendor
AMAM60	3	Print 1099-MISC Report	AM Plus	Accounts Payable	Other AP Tasks	Vendor
AMAM60	4	Reset and Save NEC YTD Statistics	AM Plus	Accounts Payable	Other AP Tasks	Vendor
AMAM60	5	Print 1099-MISC Forms	AM Plus	Accounts Payable	Other AP Tasks	Vendor
AMAM70	1	Maintain General Ledger	AM Plus	Accounts Payable	Other AP Tasks	General Ledger
AMAM70	2	Maintain Vendors	AM Plus	Accounts Payable	Other AP Tasks	Vendor
AMAM70	3	Maintain Posted Invoices & Credit Memos	AM Plus	Accounts Payable	Other AP Tasks	AP Transactions
AMAM70	5	Maintain Bank Accounts	AM Plus	Accounts Payable	Other AP Tasks	Cash Transactions
AMAM80	2	Print Chart of Accounts	AM Plus	Accounts Payable	Other AP Tasks	General Ledger
AMAM80	3	Print Vendor Names and Addresses	AM Plus	Accounts Payable	Other AP Tasks	Vendor
AMAM80	5	Print Vendors	AM Plus	Accounts Payable	Other AP Tasks	Vendor
AMAM80	6	Print Landed Costs	AM Plus	Accounts Payable	Other AP Tasks	Codes
AMAM80	7	Print Bank Accounts	AM Plus	Accounts Payable	Other AP Tasks	Cash Transactions
AMAMA0	1	Archive Current History	AM Plus	Accounts Payable	Other AP Tasks	History

XA Host Menu	Host Menu Option	Host Option/IDF Level 1 Task	Power-Link Application	Power-Link Application Tab	Power-Link Icon / IDF Level 1 Menu	IDF Level 1 Tab
AMAMA0	2	Delete Current History	AM Plus	Accounts Payable	Other AP Tasks	History
AMAMA0	3	Restore Archived History	AM Plus	Accounts Payable	Other AP Tasks	History
AMAMA0	4	Delete Archived History	AM Plus	Accounts Payable	Other AP Tasks	History
AMAMA0	5	Delete Restored History	AM Plus	Accounts Payable	Other AP Tasks	History
AMBM10	2	Work with Offline Orders and Quotes	Customer Service	Customer Service	Other Customer Service Tasks	Customer Orders and Quotes
AMBM10	3	Create Immediate Shipment Orders	Customer Service	Customer Service	Other Customer Service Tasks	Customer Orders and Quotes
AMBM10	4	Receive EDI Orders	Customer Service	Customer Service	Other Customer Service Tasks	Customer Orders and Quotes
AMBM10	8	Maintain Installments	Customer Service	Customer Service	Other Customer Service Tasks	Customer Orders and Quotes
AMBM17	6	Work with Complementary Invoices	Customer Service	Customer Service	Other Customer Service Tasks	Customer Invoices
AMBM1B	4	Process Order Pick Confirmations	Materials Management	Inventory	Other Materials Tasks	Pick Pack Ship
AMBM1B	5	Print Shipping List	Materials Management	Inventory	Other Materials Tasks	Pick Pack Ship
AMBM1B	6	Create Packing Container	Materials Management	Inventory	Other Materials Tasks	Pick Pack Ship
AMBM1B	7	Maintain Packed Containers	Materials Management	Inventory	Other Materials Tasks	Pick Pack Ship
AMBM1B	9	Maintain Shipments	Materials Management	Inventory	Other Materials Tasks	Pick Pack Ship
AMBM1B	11	Process Credit Returns	Customer Service	Customer Service	Other Customer Service Tasks	Customer Orders and Quotes
AMBM1B	12	Print Inventory Transaction Register	Materials Management	Inventory	Other Materials Tasks	Inventory Transactions

XA Host Menu	Host Menu Option	Host Option/IDF Level 1 Task	Power-Link Application	Power-Link Application Tab	Power-Link Icon / IDF Level 1 Menu	IDF Level 1 Tab
AMBM1B	15	Work with Receiving Advices	Materials Management	Inventory	Other Materials Tasks	Other Materials Tasks
AMBM20	2	Display Tax Estimates	Customer Service	Customer Service	Other Customer Service Tasks	Customer Orders and Quotes
AMBM20	2	Display Installments	Customer Service	Customer Service	Other Customer Service Tasks	Customer Orders and Quotes
AMBM20	3	Display Item Customer Orders	Engineering	PDM Plus	Other Engineering Tasks	Other Engineering Tasks
AMBM20	4	Daily Recap	Materials Management	Inventory	Other Materials Tasks	Pick Pack Ship
AMBM20	5	Simulate Pricing	Customer Service	Customer Service	Other Customer Service Tasks	Price Books and Customer Contracts
AMBM30	2	Print Order Shortages	Customer Service	Customer Service	Other Customer Service Tasks	Warehouses
AMBM30	5	Print Standing Orders Report	Customer Service	Customer Service	Other Customer Service Tasks	Customer Orders and Quotes
AMBM40	2	Print General Ledger Worksheet	Customer Service	Customer Service	Other Customer Service Tasks	Customer Invoices
AMBM40	3	Print Price List	Customer Service	Customer Service	Other Customer Service Tasks	Price Books and Customer Contracts
AMBM40	4	Print Item Foreign Currency Prices	Engineering	PDM Plus	Other Engineering Tasks	Item Foreign Currency Prices
AMBM40	5	Print Items without Foreign Currency Prices	Engineering	PDM Plus	Other Engineering Tasks	Item Foreign Currency Prices
AMBM40	6	Print Item Foreign Language Descriptions	Engineering	PDM Plus	Other Engineering Tasks	Item Foreign Languages
AMBM40	7	Print Items without Foreign Language Descriptions	Engineering	PDM Plus	Other Engineering Tasks	Item Foreign Languages
AMBM40	9	Print Maintenance Log	Customer Service	Customer Service	Other Customer Service Tasks	Customer Orders and Quotes
AMBM60	4	Work with Warehouses	Customer Service	Customer Service	Other Customer Service Tasks	Warehouses
AMBM60	9	Customer Order Hold Codes	Customer Service	Codes	Other Customer Service Codes	Customer Order Codes

XA Host Menu	Host Menu Option	Host Option/IDF Level 1 Task	Power-Link Application	Power-Link Application Tab	Power-Link Icon / IDF Level 1 Menu	IDF Level 1 Tab
AMBM60	10	Work with Companies	Customer Service	Customer Service	Other Customer Service Tasks	Customer Orders and Quotes
AMBM60	12	Comments	Customer Service	Codes	Other Customer Service Codes	Customer Order Codes
AMBM60	14	Installment Methods	Finance	Transaction Codes	Other Transaction Code Tasks	Settlement Codes
AMBM60	15	Note Methods	Finance	Transaction Codes	Other Transaction Code Tasks	Settlement Codes
AMBM62	2	Maintain Kit Components	Engineering	PDM Plus	Other Engineering Tasks	Other Engineering Tasks
AMBM62	3	Maintain Item Substitutes	Engineering	PDM Plus	Other Engineering Tasks	Other Engineering Tasks
AMBM62	3	Maintain Item Industry Classes	Engineering	PDM Plus	Other Engineering Tasks	Other Engineering Tasks
AMBM63	2	Work with Price Books	Customer Service	Customer Service	Other Customer Service Tasks	Price Books and Customer Contracts
AMBM63	6	Mass Change Prices	Engineering	PDM Plus	Other Engineering Tasks	Item Prices
AMBM63	7	Maintain Item Foreign Currency Prices	Engineering	PDM Plus	Other Engineering Tasks	Item Foreign Currency Prices
AMBM63	8	Revalue Item Foreign Currency Prices	Engineering	PDM Plus	Other Engineering Tasks	Item Foreign Currency Prices
AMBM63	9	Revalue Customer Contract Prices	Customer Service	Customer Service	Other Customer Service Tasks	Price Books and Customer Contracts
AMBM63	10	Settlement Terms	Customer Service	Codes	Other Customer Service Codes	Customer Order Codes
AMBM63	12	Variable Trade Discounts	Customer Service	Codes	Other Customer Service Codes	Customer Order Codes
AMBM65	1	Shipping Calendar	Materials Management	Inventory	Other Materials Tasks	Other Materials Tasks
AMBM65	2	Special Charge Comments	Customer Service	Codes	Other Customer Service Codes	Customer Order Codes
AMBM67	3	Cancellation Reasons	Customer Service	Codes	Other Customer Service Codes	Customer Order Codes
AMBM67	19	Customer Order Maintenance Reasons	Customer Service	Codes	Other Customer Service Codes	Customer Order Codes

XA Host Menu	Host Menu Option	Host Option/IDF Level 1 Task	Power-Link Application	Power-Link Application Tab	Power-Link Icon / IDF Level 1 Menu	IDF Level 1 Tab
AMBM68	1	Maintain Action List Descriptions	Customer Service	Customer Service	Other Customer Service Tasks	Application Administration
AMBM68	2	Activate Application Exits	Customer Service	Customer Service	Other Customer Service Tasks	Application Administration
AMBM68	02	Activate User Exits	Environment	Settings	CAS Maintenance	Maintenance/Change
AMBM68	02	Activate User Exits	Environment	Settings	CAS Maintenance	Maintenance/Change
AMBM68	3	Maintain Navigation Defaults	Customer Service	Customer Service	Other Customer Service Tasks	Application Administration
AMBM68	4	Maintain Data Defaults	Customer Service	Customer Service	Other Customer Service Tasks	Application Administration
AMBM6D	2	Tax Groups	Customer Service	Codes	Other Customer Service Codes	Tax Codes
AMBM6D	02	Maintain Tax Group Codes	Environment	Settings	CAS Maintenance	VAT/Sales Tax Support
AMBM6D	5	Tax Rules	Customer Service	Codes	Other Customer Service Codes	Tax Codes
AMBM6D	05	Maintain Tax Table	Environment	Settings	CAS Maintenance	VAT/Sales Tax Support
AMBM6D	06	Tax Code Results	Finance	Tax Codes	Other Tax Code Tasks	Tax Codes
AMBM6D	09	Item Tax Classes	Finance	Tax Codes	Other Tax Code Tasks	Tax Codes
AMBM6D	10	Tax Transaction Types	Finance	Tax Codes	Other Tax Code Tasks	Tax Codes
AMBM6D	11	Tax Condition Priorities	Finance	Tax Codes	Other Tax Code Tasks	Tax Codes
AMBM6D	12	Simulate Tax Calculation	Finance	Tax Codes	Other Tax Code Tasks	Tax Codes
AMBM6E	4	Maintain Offline Foreign Currency Prices	Engineering	PDM Plus	Other Engineering Tasks	Item Foreign Currency Prices
AMBM71	1	Maintain Account Assignment Rules	AM Plus	General Ledger	Customer Service GL Interface Tasks	Account Assignment Rules
AMBM71	1	Maintain Account Assignment Rules	Finance	Customer Service GL Interface	Customer Service GL Interface Tasks	Account Assignment Rules
AMBM71	2	Maintain Acct Assignment Rule Sequences	AM Plus	General Ledger	Customer Service GL Interface Tasks	Account Assignment Rules
AMBM71	2	Maintain Acct Assignment Rule Sequences	Finance	Customer Service GL	Customer Service GL Interface Tasks	Account Assignment Rules

XA Host Menu	Host Menu Option	Host Option/IDF Level 1 Task	Power-Link Application	Power-Link Application Tab	Power-Link Icon / IDF Level 1 Menu	IDF Level 1 Tab
				Interface		
AMBM71	3	Simulate Account Assignments	AM Plus	General Ledger	Customer Service GL Interface Tasks	Account Assignment Rules
AMBM71	3	Simulate Account Assignments	Finance	Customer Service GL Interface	Customer Service GL Interface Tasks	Account Assignment Rules
AMBM71	4	Maintain Intercompany Accounts	AM Plus	General Ledger	Customer Service GL Interface Tasks	Intercompany Accounts
AMBM71	4	Maintain Intercompany Accounts	Finance	Customer Service GL Interface	Customer Service GL Interface Tasks	Intercompany Accounts
AMBM71	5	Print Account Assignment Rules	AM Plus	General Ledger	Customer Service GL Interface Tasks	Account Assignment Rules
AMBM71	5	Print Account Assignment Rules	Finance	Customer Service GL Interface	Customer Service GL Interface Tasks	Account Assignment Rules
AMBM71	6	Print Account Assignment Rule Sequences	AM Plus	General Ledger	Customer Service GL Interface Tasks	Account Assignment Rules
AMBM71	6	Print Account Assignment Rule Sequences	Finance	Customer Service GL Interface	Customer Service GL Interface Tasks	Account Assignment Rules
AMBM71	7	Print Intercompany Accounts List	AM Plus	General Ledger	Customer Service GL Interface Tasks	Intercompany Accounts
AMBM71	7	Print Intercompany Accounts List	Finance	Customer Service GL Interface	Customer Service GL Interface Tasks	Intercompany Accounts
AMBM72	1	Assign Accounts	AM Plus	General Ledger	Customer Service GL Interface Tasks	Transactions
AMBM72	2	Work With Assigned Accounts	AM Plus	General Ledger	Customer Service GL Interface Tasks	Transactions
AMBM73	1	Create Ledger Entries	AM Plus	General Ledger	Customer Service GL Interface Tasks	Transactions



XA Host Menu	Host Menu Option	Host Option/IDF Level 1 Task	Power-Link Application	Power-Link Application Tab	Power-Link Icon / IDF Level 1 Menu	IDF Level 1 Tab
AMBM73	2	Print Temporary General Ledger	AM Plus	General Ledger	Customer Service GL Interface Tasks	General Ledger
AMBM73	3	Clear Temporary General Ledger	AM Plus	General Ledger	Customer Service GL Interface Tasks	General Ledger
AMBM73	4	Maintain Transaction Types	AM Plus	General Ledger	Customer Service GL Interface Tasks	Transaction Types
AMBM73	4	Maintain Transaction Types	Finance	Customer Service GL Interface	Customer Service GL Interface Tasks	Transaction Types
AMBM73	5	Maintain General Ledger	AM Plus	Accounts Receivable	Other AR Tasks	General Ledger
AMBM73	5	Maintain General Ledger	AM Plus	General Ledger	Other GL Tasks	General ledger
AMBM80	1	Archive/Delete Order Shipments	Materials Management	Inventory	Other Materials Tasks	Pick Pack Ship
AMBM80	2	Maintain Archived Order Shipments	Materials Management	Inventory	Other Materials Tasks	Pick Pack Ship
AMBM82	1	Control Company Invoice Numbers	Customer Service	Codes	Other Customer Service Codes	Customer Invoice Codes
AMBM82	4	Maintain User Invoice Number Defaults	Customer Service	Codes	Other Customer Service Codes	Customer Invoice Codes
AMCM00	8	Print Work List	Production	Order Based	Other Order Based Production Tasks	Production Reports
AMCM20	1	Print Order Status Reports	Production	Order Based	Other Order Based Production Tasks	Production Reports
AMCM20	2	Print Exception Analysis	Production	Order Based	Other Order Based Production Tasks	Production Reports
AMCM20	3	Print Period Analysis Cost Summary	Production	Order Based	Other Order Based Production Tasks	Production Reports
AMCM20	4	Print WIP Cost	Production	Order Based	Other Order Based Production Tasks	Production Reports

XA Host Menu	Host Menu Option	Host Option/IDF Level 1 Task	Power-Link Application	Power-Link Application Tab	Power-Link Icon / IDF Level 1 Menu	IDF Level 1 Tab
AMCM30	1	Select MO – Add Operations	Production	Order Based	Other Order Based Production Tasks	Manufacturing Orders
AMCM30	2	Release to Create Operations	Production	Order Based	Other Order Based Production Tasks	Manufacturing Orders
AMCM40	1	Create Shop Packet – Multiple Orders	Production	Order Based	Other Order Based Production Tasks	Manufacturing Orders
AMCM40	2	Create Shop Packet – Individual Order	Production	Order Based	Other Order Based Production Tasks	Manufacturing Orders
AMCM50	1	Enter Shop Activity	Production	Order Based	Other Order Based Production Tasks	Shop Activity
AMCM50	2	Enter Offline Shop Activity	Production	Order Based	Other Order Based Production Tasks	Shop Activity
AMCM50	3	Work With Errors File	Production	Order Based	Other Order Based Production Tasks	Shop Activity
AMCM50	4	Update Shop Activity	Production	Order Based	Other Order Based Production Tasks	Shop Activity
AMCM70	9	Maintain PCC Control File	Production	Order Based	Other Order Based Production Tasks	Other Production Tasks
AMCM91	1	Maintain Assignment Rules	AM Plus	General Ledger	Order Based Production GL Interface Tasks	Account Assignment Rules
AMCM91	1	Maintain Assignment Rules	Finance	Order Based Production GL Interface	Order Based Production GL Interface Tasks	Account Assignment Rules
AMCM91	2	Maintain Account Assignment Rule Sequences	AM Plus	General Ledger	Order Based Production GL Interface Tasks	Account Assignment Rules
AMCM91	2	Maintain Acct Assignment Rule Sequences	Finance	Order Based Production GL Interface	Order Based Production GL Interface Tasks	Account Assignment Rules
AMCM91	3	Simulate Account Assignments	AM Plus	General Ledger	Order Based Production GL Interface Tasks	Account Assignment Rules

XA Host Menu	Host Menu Option	Host Option/IDF Level 1 Task	Power-Link Application	Power-Link Application Tab	Power-Link Icon / IDF Level 1 Menu	IDF Level 1 Tab
AMCM91	3	Simulate Account Assignments	Finance	Order Based Production GL Interface	Order Based Production GL Interface Tasks	Account Assignment Rules
AMCM91	4	Maintain Intercompany Accounts	AM Plus	General Ledger	Order Based Production GL Interface Tasks	Intercompany Accounts
AMCM91	4	Maintain Intercompany Accounts	Finance	Order Based Production GL Interface	Order Based Production GL Interface Tasks	Intercompany Accounts
AMCM91	5	Print Account Assignment Rules	AM Plus	General Ledger	Order Based Production GL Interface Tasks	Account Assignment Rules
AMCM91	5	Print Account Assignment Rules	Finance	Order Based Production GL Interface	Order Based Production GL Interface Tasks	Account Assignment Rules
AMCM91	6	Print Account Assignment Rule Sequences	AM Plus	General Ledger	Order Based Production GL Interface Tasks	Account Assignment Rules
AMCM91	6	Print Account Assignment Rule Sequences	Finance	Order Based Production GL Interface	Order Based Production GL Interface Tasks	Account Assignment Rules
AMCM91	7	Print Intercompany Accounts List	AM Plus	General Ledger	Order Based Production GL Interface Tasks	Intercompany Accounts
AMCM91	7	Print Intercompany Accounts List	Finance	Order Based Production GL Interface	Order Based Production GL Interface Tasks	Intercompany Accounts
AMCM92	1	Assign Accounts	AM Plus	General Ledger	Order Based Production GL Interface Tasks	Transactions
AMCM92	1	Assign Accounts	Finance	Order Based Production GL Interface	Order Based Production GL Interface Tasks	Transactions
AMCM92	2	Work With Assigned Accounts	AM Plus	General Ledger	Order Based Production GL Interface Tasks	Transactions

XA Host Menu	Host Menu Option	Host Option/IDF Level 1 Task	Power-Link Application	Power-Link Application Tab	Power-Link Icon / IDF Level 1 Menu	IDF Level 1 Tab
AMCM92	2	Work With Assigned Accounts	Finance	Order Based Production GL Interface	Order Based Production GL Interface Tasks	Transactions
AMCM93	1	Create Ledger Entries	AM Plus	General Ledger	Order Based Production GL Interface Tasks	Transactions
AMCM93	1	Create Ledger Entries	Finance	Order Based Production GL Interface	Order Based Production GL Interface Tasks	Transactions
AMCM93	2	Print Temporary General Ledger	AM Plus	General Ledger	Order Based Production GL Interface Tasks	General Ledger
AMCM93	3	Clear Temporary General Ledger	AM Plus	General Ledger	Order Based Production GL Interface Tasks	General Ledger
AMCM93	4	Maintain Transaction Types	AM Plus	General Ledger	Order Based Production GL Interface Tasks	Transaction Types
AMCM93	4	Maintain Transaction Types	Finance	Order Based Production GL Interface	Order Based Production GL Interface Tasks	Transaction Types
AMCM93	5	Maintain General Ledger	AM Plus	General Ledger	Other GL Tasks	General ledger
AMCMA0	1	Work With Outside Operations Details	Production	Order Based	Other Order Based Production Tasks	Other Production Tasks
AMCMA0	2	Work With Outside Operations Cross Reference	Production	Order Based	Other Order Based Production Tasks	Other Production Tasks
AMDM40	1	Work With Incoming CAD Files	Engineering	Enterprise PDM	CAD Interface Tasks	CAD Interface
AMDM40	2	Work With Translated CAD Files	Engineering	Enterprise PDM	CAD Interface Tasks	CAD Interface
AMDM40	3	Define CAD Import Driver	Engineering	Enterprise PDM	CAD Interface Tasks	CAD Interface
AMEM02	2	Display Bill of Material	Engineering	PDM Plus	Other Engineering Tasks	Bills of Material and Routings
AMEM02	3	Display Costed Bill of Material	Engineering	PDM Plus	Other Engineering Tasks	Bills of Material and Routings
AMEM02	6	Display Features and Options	Engineering	PDM Plus	Other Engineering Tasks	Features and Options

XA Host Menu	Host Menu Option	Host Option/IDF Level 1 Task	Power-Link Application	Power-Link Application Tab	Power-Link Icon / IDF Level 1 Menu	IDF Level 1 Tab
AMEM02	7	Display Features and Options with S-number Build	Engineering	PDM Plus	Other Engineering Tasks	Features and Options
AMEM02	8	Display Item Foreign Language Descriptions	Engineering	PDM Plus	Other Engineering Tasks	Item Foreign Languages
AMEM03	4	Print Features and Options	Engineering	PDM Plus	Other Engineering Tasks	Features and Options
AMEM03	5	Print BOM / Routing	Engineering	PDM Plus	Other Engineering Tasks	Bills of Material and Routings
AMEM03	6	Print Costed BOM / Operations	Engineering	PDM Plus	Other Engineering Tasks	Bills of Material and Routings
AMEM03	7	Print WIP Cost Worksheet	Engineering	PDM Plus	Other Engineering Tasks	Other Engineering Tasks
AMEM03	8	Print Item Foreign Language Descriptions	Engineering	PDM Plus	Other Engineering Tasks	Item Foreign Languages
AMEM04	1	Calculate Current Cost	Engineering	PDM Plus	Product Costing	Calculate Product Cost
AMEM04	2	Calculate Standard Cost	Engineering	PDM Plus	Product Costing	Calculate Product Cost
AMEM04	3	Calculate Both Current and Standard Cost	Engineering	PDM Plus	Product Costing	Calculate Product Cost
AMEM04	4	Simulate Current Cost	Engineering	PDM Plus	Product Costing	Simulate Product Cost
AMEM04	5	Simulate Standard Cost	Engineering	PDM Plus	Product Costing	Simulate Product Cost
AMEM04	6	Simulate Both Current and Standard Cost	Engineering	PDM Plus	Product Costing	Simulate Product Cost
AMEM04	7	Change Item Cost by Percent	Engineering	PDM Plus	Product Costing	Other Costing Tasks
AMEM04	8	Change L/O Costing Table	Engineering	PDM Plus	Product Costing	Costing Tables
AMEM04	9	Change L/O Simulation Costing Table	Engineering	PDM Plus	Product Costing	Costing Tables
AMEM04	10	Change P/O Costing Table	Engineering	PDM Plus	Product Costing	Costing Tables
AMEM04	11	Change P/O Simulation Costing Table	Engineering	PDM Plus	Product Costing	Costing Tables
AMEM04	12	Roll Current to Standard Costs	Engineering	PDM Plus	Product Costing	Other Costing Tasks
AMEM05	5	Maintain Item Base Price	Engineering	PDM Plus	Other Engineering Tasks	Item Prices
AMEM05	6	Maintain Item Foreign Language Descriptions	Engineering	PDM Plus	Other Engineering Tasks	Item Foreign Languages
AMEM05	9	Maintain PDM Control File	Engineering	PDM Plus	Other Engineering Tasks	Other Engineering Tasks
AMEM06	1	Calculate Cumulative Yield	Engineering	PDM Plus	Product Costing	Other Costing Tasks
AMEM06	2	Calculate Adjusted Quantity Per	Engineering	PDM Plus	Product Costing	Other Costing Tasks

XA Host Menu	Host Menu Option	Host Option/IDF Level 1 Task	Power-Link Application	Power-Link Application Tab	Power-Link Icon / IDF Level 1 Menu	IDF Level 1 Tab
AMGM00	3	Close Fiscal Period	AM Plus	General Ledger	Other GL Tasks	GL Transactions
AMGM10	1	Maintain Journal Transactions	AM Plus	General Ledger	Other GL Tasks	GL Transactions
AMGM10	2	Enter Offline Journal Transactions	AM Plus	General Ledger	Other GL Tasks	GL Transactions
AMGM10	3	Post Journal Transactions	AM Plus	General Ledger	Other GL Tasks	GL Transactions
AMGM10	4	Enter Journal Recurring Transactions	AM Plus	General Ledger	Other GL Tasks	GL Transactions
AMGM10	5	Enter Journal Reversals	AM Plus	General Ledger	Other GL Tasks	GL Transactions
AMGM20	1	Print Financial Worksheet	AM Plus	General Ledger	Other GL Tasks	Reports
AMGM20	2	Print Posted Journals Audit	AM Plus	General Ledger	Other GL Tasks	GL Transactions
AMGM20	3	Print General Ledger Detail Audit	AM Plus	General Ledger	Other GL Tasks	GL Transactions
AMGM20	4	Print General Ledger Summary Audit	AM Plus	General Ledger	Other GL Tasks	GL Transactions
AMGM20	5	Print Preliminary General Ledger	AM Plus	General Ledger	Other GL Tasks	Reports
AMGM20	6	Print Comparative General Ledger	AM Plus	General Ledger	Other GL Tasks	Reports
AMGM20	7	Print Income Statement	AM Plus	General Ledger	Other GL Tasks	Reports
AMGM20	8	Print Fiscal Period Close Statement	AM Plus	General Ledger	Other GL Tasks	Reports
AMGM20	9	Print Journal History Report	AM Plus	General Ledger	Other GL Tasks	History
AMGM20	10	Print Closed Periods General Ledger	AM Plus	General Ledger	Other GL Tasks	GL Transactions

XA Host Menu	Host Menu Option	Host Option/IDF Level 1 Task	Power-Link Application	Power-Link Application Tab	Power-Link Icon / IDF Level 1 Menu	IDF Level 1 Tab
AMGM20	11	Print New Year Demand Reports	AM Plus	General Ledger	Other GL Tasks	Reports
AMGM30	1	Audit Year End General Ledger	AM Plus	General Ledger	Other GL Tasks	General ledger
AMGM30	2	Audit and Initialize Year End GL	AM Plus	General Ledger	Other GL Tasks	General ledger
AMGM30	4	Audit/Add Entries & Init Year End GL	AM Plus	General Ledger	Other GL Tasks	General ledger
AMGM40	1	Maintain General Ledger	AM Plus	General Ledger	Other GL Tasks	General ledger
AMGM40	2	Edit General Ledger	AM Plus	General Ledger	Other GL Tasks	General ledger
AMGM40	3	Maintain Statement Formats	AM Plus	General Ledger	Other GL Tasks	Statement Formats
AMGM40	4	Edit Statement Formats	AM Plus	General Ledger	Other GL Tasks	Statement Formats
AMGM40	5	Copy Chart of Accounts	AM Plus	General Ledger	Other GL Tasks	General ledger
AMGM40	6	Copy Statement Formats	AM Plus	General Ledger	Other GL Tasks	Statement Formats
AMGM40	7	Maintain Period End Table	AM Plus	General Ledger	Other GL Tasks	General ledger
AMGM40	8	Initialize Currency IDs	AM Plus	General Ledger	Other GL Tasks	General ledger
AMGM50	1	Print Chart of Accounts	AM Plus	General Ledger	Other GL Tasks	General ledger
AMGM50	2	Print Current General Ledger	AM Plus	General Ledger	Other GL Tasks	Reports
AMGM50	3	Print Budget General Ledger	AM Plus	General Ledger	Other GL Tasks	Reports
AMGM50	4	Print Last Year General Ledger	AM Plus	General Ledger	Other GL Tasks	Reports

XA Host Menu	Host Menu Option	Host Option/IDF Level 1 Task	Power-Link Application	Power-Link Application Tab	Power-Link Icon / IDF Level 1 Menu	IDF Level 1 Tab
AMGM50	5	Print Current & Budget General Ledger	AM Plus	General Ledger	Other GL Tasks	Reports
AMGM50	6	Print Current & Last Year General Ledger	AM Plus	General Ledger	Other GL Tasks	Reports
AMGM50	7	Print Current, Budget & Last Year GL	AM Plus	General Ledger	Other GL Tasks	Reports
AMGM50	8	Print Statement Formats	AM Plus	General Ledger	Other GL Tasks	Statement Formats
AMGM50	9	Print Period End Dates	AM Plus	General Ledger	Other GL Tasks	General ledger
AMGM60	2	Archive Current Journal History	AM Plus	General Ledger	Other GL Tasks	History
AMGM60	3	Delete Current Journal History	AM Plus	General Ledger	Other GL Tasks	History
AMGM60	4	Restore Archived Journal History	AM Plus	General Ledger	Other GL Tasks	History
AMGM60	5	Delete Archived Journal History	AM Plus	General Ledger	Other GL Tasks	History
AMGM60	6	Delete Restored Journal History	AM Plus	General Ledger	Other GL Tasks	History
AMGM70	2	Display Period End Dates	AM Plus	General Ledger	Other GL Tasks	General ledger
AMGM70	3	Display Period Status	AM Plus	General Ledger	Other GL Tasks	GL Transactions
AMGM70	4	Display New Year General Ledger	AM Plus	General Ledger	Other GL Tasks	General ledger
AMGM90	1	Transfer General Ledger Balances	AM Plus	General Ledger	Other GL Tasks	General ledger
AMGM90	2	Print Consolidation Worksheet	AM Plus	General Ledger	Other GL Tasks	GL Transactions
AMHM00	5	Dialogue Evaluation	Customer Service		Knowledge-Based Configurator	Main Menu



XA Host Menu	Host Menu Option	Host Option/IDF Level 1 Task	Power-Link Application	Power-Link Application Tab	Power-Link Icon / IDF Level 1 Menu	IDF Level 1 Tab
AMHM00	6	Knowledge Base Load	Customer Service		Knowledge-Based Configurator	Main Menu
AMHM00	7	Load Data from Offline Configuration Files	Customer Service		Knowledge-Based Configurator	Main Menu
AMHM10	1	Family	Customer Service		Knowledge-Based Configurator	File Maintenance
AMHM10	2	Question	Customer Service		Knowledge-Based Configurator	File Maintenance
AMHM10	3	Option Item	Customer Service		Knowledge-Based Configurator	File Maintenance
AMHM10	4	Routing Operation	Customer Service		Knowledge-Based Configurator	File Maintenance
AMHM10	5	Low Level Item	Customer Service		Knowledge-Based Configurator	File Maintenance
AMHM10	6	Routing/Charge	Customer Service		Knowledge-Based Configurator	File Maintenance
AMHM10	7	Rules	Customer Service		Knowledge-Based Configurator	File Maintenance
AMHM10	8	Formula	Customer Service		Knowledge-Based Configurator	File Maintenance
AMHM10	9	Catalog	Customer Service		Knowledge-Based Configurator	File Maintenance
AMHM10	10	End Item Override	Customer Service		Knowledge-Based Configurator	File Maintenance
AMHM10	11	Extended Item Description	Customer Service		Knowledge-Based Configurator	File Maintenance
AMHM10	12	Audit Post	Customer Service		Knowledge-Based Configurator	File Maintenance
AMHM10	13	Matrix Maintenance	Customer Service		Knowledge-Based Configurator	File Maintenance
AMHM20	1	Family	Customer Service		Knowledge-Based Configurator	File Listings

XA Host Menu	Host Menu Option	Host Option/IDF Level 1 Task	Power-Link Application	Power-Link Application Tab	Power-Link Icon / IDF Level 1 Menu	IDF Level 1 Tab
AMHM20	2	Question	Customer Service		Knowledge-Based Configurator	File Listings
AMHM20	3	Option Item	Customer Service		Knowledge-Based Configurator	File Listings
AMHM20	4	Routing Operation	Customer Service		Knowledge-Based Configurator	File Listings
AMHM20	5	Low Level Item	Customer Service		Knowledge-Based Configurator	File Listings
AMHM20	6	Routing/Charge	Customer Service		Knowledge-Based Configurator	File Listings
AMHM20	7	Quantity Per	Customer Service		Knowledge-Based Configurator	File Listings
AMHM20	8	Formula	Customer Service		Knowledge-Based Configurator	File Listings
AMHM20	9	Catalog	Customer Service		Knowledge-Based Configurator	File Listings
AMHM20	10	End Item Override	Customer Service		Knowledge-Based Configurator	File Listings
AMHM20	11	Extended Item Description	Customer Service		Knowledge-Based Configurator	File Listings
AMHM20	12	Rules	Customer Service		Knowledge-Based Configurator	File Listings
AMHM20	13	Matrix Listing	Customer Service		Knowledge-Based Configurator	File Listings
AMHM30	1	Item Where Used Report	Customer Service		Knowledge-Based Configurator	Inquiry/Reports
AMHM30	2	Facility Id Where Used Report	Customer Service		Knowledge-Based Configurator	Inquiry/Reports
AMHM30	3	Family Structure Report	Customer Service		Knowledge-Based Configurator	Inquiry/Reports
AMHM30	4	Process Id Where Used Report	Customer Service		Knowledge-Based Configurator	Inquiry/Reports

XA Host Menu	Host Menu Option	Host Option/IDF Level 1 Task	Power-Link Application	Power-Link Application Tab	Power-Link Icon / IDF Level 1 Menu	IDF Level 1 Tab
AMHM30	5	Family Structure Inquiry	Customer Service		Knowledge-Based Configurator	Inquiry/Reports
AMHM30	6	Rules Where Used Report	Customer Service		Knowledge-Based Configurator	Inquiry/Reports
AMHM40	1	Customer Order Inquiry	Customer Service		Knowledge-Based Configurator	Customer Order Inquiry/Reports
AMHM40	2	Open Order Reports	Customer Service		Knowledge-Based Configurator	Customer Order Inquiry/Reports
AMHM40	3	History Order Reports	Customer Service		Knowledge-Based Configurator	Customer Order Inquiry/Reports
AMHM40	4	Open Order BOM Blow-thru Report	Customer Service		Knowledge-Based Configurator	Customer Order Inquiry/Reports
AMHM40	5	Purge Order Characteristics	Customer Service		Knowledge-Based Configurator	Customer Order Inquiry/Reports
AMIM10	5	Item Availability	Materials Management	Inventory	Other Materials Tasks	Item Warehouses
AMIM10	9	Warehouse Summary - By Item	Materials Management	Inventory	Other Materials Tasks	Item Warehouses
AMIM21	4	Print Manufacturing Order Status	Production	Order Based	Other Production Tasks	Production Reports
AMIM21	5	Print Purchase / Manufacturing Order Status	Production	Order Based	Other Production Tasks	Production Reports
AMIM21	6	ABC Analysis	Materials Management	Inventory	Other Materials Tasks	Item Warehouses
AMIM21	7	Financial Stock Analysis	Materials Management	Inventory	Other Materials Tasks	Item Warehouses
AMIM21	8	Stock Movement Analysis	Materials Management	Inventory	Other Materials Tasks	Item Warehouses
AMIM22	3	Follow-up Shortage	Materials Management	Inventory	Other Materials Tasks	Item Warehouses
AMIM22	5	Items Waiting Inspection	Materials Management	Inventory	Other Materials Tasks	Warehouses

XA Host Menu	Host Menu Option	Host Option/IDF Level 1 Task	Power-Link Application	Power-Link Application Tab	Power-Link Icon / IDF Level 1 Menu	IDF Level 1 Tab
AMIM22	9	Inventory Valuation	Materials Management	Inventory	Other Materials Tasks	Warehouses
AMIM23	3	Print Item Base Price	Engineering	PDM Plus	Other Engineering Tasks	Item Prices
AMIM23	9	Goods Received Notes	Materials Management	Inventory	Other Materials Tasks	Other Materials Tasks
AMIM30	1	Entry	Materials Management	Inventory	Other Materials Tasks	Inventory Transactions
AMIM30	2	Entry from Offline Files	Materials Management	Inventory	Other Materials Tasks	Inventory Transactions
AMIM30	3	Transaction Register	Materials Management	Inventory	Other Materials Tasks	Inventory Transactions
AMIM30	4	Quality Control Transactions	Materials Management	Inventory	Other Materials Tasks	Inventory Transactions
AMIM30	5	Discrete Allocation Worksheet Generation	Materials Management	Inventory	Other Materials Tasks	Other Materials Tasks
AMIM30	6	Discrete Allocation	Materials Management	Inventory	Other Materials Tasks	Other Materials Tasks
AMIM30	7	Miscellaneous Item Transactions	Materials Management	Inventory	Other Materials Tasks	Inventory Transactions
AMIM30	8	Invoices to Goods Received Notes	Materials Management	Inventory	Other Materials Tasks	Inventory Transactions
AMIM30	9	Advance Shipping Notices	Materials Management	Inventory	Other Materials Tasks	Other Materials Tasks
AMIM40	1	Enter Orders	Production	Order Based	Other Production Tasks	Manufacturing Orders
AMIM40	2	Release Orders	Production	Order Based	Other Production Tasks	Manufacturing Orders
AMIM40	3	Release Orders with Shop Packet	Production	Order Based	Other Production Tasks	Manufacturing Orders
AMIM40	5	Select Orders for Closeout	Production	Order Based	Other Production Tasks	Manufacturing Orders
AMIM40	6	Close and Purge Orders	Production	Order Based	Other Production Tasks	Manufacturing Orders
AMIM44	1	Create Shop Packet – Multiple Orders	Production	Order Based	Other Production Tasks	Manufacturing Orders
AMIM44	2	Create Shop Packet – Individual Order	Production	Order Based	Other Production Tasks	Manufacturing Orders

XA Host Menu	Host Menu Option	Host Option/IDF Level 1 Task	Power-Link Application	Power-Link Application Tab	Power-Link Icon / IDF Level 1 Menu	IDF Level 1 Tab
AMIM50	6	Physical Inventory Update	Materials Management	Inventory	Other Materials Tasks	Other Materials Tasks
AMIM60	1	Period End / Year End Close	Materials Management	Inventory	Other Materials Tasks	Item Warehouses
AMIM60	2	LIFO/FIFO Valuation Report	Materials Management	Inventory	Other Materials Tasks	LIFO/FIFO Transactions
AMIM60	3	LIFO/FIFO Transaction Purge and List	Materials Management	Inventory	Other Materials Tasks	LIFO/FIFO Transactions
AMIM60	4	LIFO/FIFO Maintenance	Materials Management	Inventory	Other Materials Tasks	LIFO/FIFO Transactions
AMIM70	7	Reprint Shop Packet	Production	Order Based	Other Production Tasks	Manufacturing Orders
AMIM70	12	Work with Warehouses	Materials Management	Inventory	Other Materials Tasks	Warehouses
AMIM70	15	Control File	Materials Management	Inventory	Other Materials Tasks	Inventory Transactions
AMIM80	3	Purge/Save Transaction History	Materials Management	Inventory	Other Materials Tasks	Inventory Transactions
AMIM80	4	Restore Transaction History	Materials Management	Inventory	Other Materials Tasks	Inventory Transactions
AMIM80	5	Delete Restored Transaction History	Materials Management	Inventory	Other Materials Tasks	Inventory Transactions
AMIM80	6	Delete Transaction History Archive Records	Materials Management	Inventory	Other Materials Tasks	Inventory Transactions
AMIMA0	1	Display Manufacturing Order History	Production	Order Based	Other Production Tasks	Manufacturing Order History
AMIMA0	2	Print Manufacturing Order History	Production	Order Based	Other Production Tasks	Manufacturing Order History
AMIMA0	3	Archive Manufacturing Order History	Production	Order Based	Other Production Tasks	Manufacturing Order History
AMIMB1	1	Maintain Account Assignment Rules	AM Plus	General Ledger	Materials GL Interface Tasks	Account Assignment Rules
AMIMB1	1	Maintain Account Assignment Rules	Finance	Materials GL Interface	Materials GL Interface Tasks	Account Assignment Rules
AMIMB1	2	Maintain Acct Assignment Rule Sequences	AM Plus	General Ledger	Materials GL Interface Tasks	Account Assignment Rules

XA Host Menu	Host Menu Option	Host Option/IDF Level 1 Task	Power-Link Application	Power-Link Application Tab	Power-Link Icon / IDF Level 1 Menu	IDF Level 1 Tab
AMIMB1	2	Maintain Acct Assignment Rule Sequences	Finance	Materials GL Interface	Materials GL Interface Tasks	Account Assignment Rules
AMIMB1	3	Simulate Account Assignments	AM Plus	General Ledger	Materials GL Interface Tasks	Account Assignment Rules
AMIMB1	3	Simulate Account Assignments	Finance	Materials GL Interface	Materials GL Interface Tasks	Account Assignment Rules
AMIMB1	4	Maintain Intercompany Accounts	AM Plus	General Ledger	Materials GL Interface Tasks	Intercompany Accounts
AMIMB1	4	Maintain Intercompany Accounts	Finance	Materials GL Interface	Materials GL Interface Tasks	Intercompany Accounts
AMIMB1	5	Print Account Assignment Rules	AM Plus	General Ledger	Materials GL Interface Tasks	Account Assignment Rules
AMIMB1	5	Print Account Assignment Rules	Finance	Materials GL Interface	Materials GL Interface Tasks	Account Assignment Rules
AMIMB1	6	Print Account Assignment Rule Sequences	AM Plus	General Ledger	Materials GL Interface Tasks	Account Assignment Rules
AMIMB1	6	Print Account Assignment Rule Sequences	Finance	Materials GL Interface	Materials GL Interface Tasks	Account Assignment Rules
AMIMB1	7	Print Intercompany Accounts List	AM Plus	General Ledger	Materials GL Interface Tasks	Intercompany Accounts
AMIMB1	7	Print Intercompany Accounts List	Finance	Materials GL Interface	Materials GL Interface Tasks	Intercompany Accounts
AMIMB2	1	Assign Accounts	AM Plus	General Ledger	Materials GL Interface Tasks	Transactions
AMIMB2	1	Assign Accounts	Finance	Materials GL Interface	Materials GL Interface Tasks	Transactions
AMIMB2	2	Work With Assigned Accounts	AM Plus	General Ledger	Materials GL Interface Tasks	Transactions
AMIMB2	2	Work With Assigned Accounts	Finance	Materials GL Interface	Materials GL Interface Tasks	Transactions
AMIMB3	1	Create Ledger Entries	AM Plus	General Ledger	Materials GL Interface Tasks	Transactions

XA Host Menu	Host Menu Option	Host Option/IDF Level 1 Task	Power-Link Application	Power-Link Application Tab	Power-Link Icon / IDF Level 1 Menu	IDF Level 1 Tab
AMIMB3	1	Create Ledger Entries	Finance	Materials GL Interface	Materials GL Interface Tasks	Transactions
AMIMB3	2	Print Temporary General Ledger	AM Plus	General Ledger	Materials GL Interface Tasks	General Ledger
AMIMB3	3	Clear Temporary General Ledger	AM Plus	General Ledger	Materials GL Interface Tasks	General Ledger
AMIMB3	4	Maintain Transaction Types	AM Plus	General Ledger	Materials GL Interface Tasks	Transaction Types
AMIMB3	4	Maintain Transaction Types	Finance	Materials GL Interface	Materials GL Interface Tasks	Transaction Types
AMIMB3	5	Maintain General Ledger	AM Plus	General Ledger	Other GL Tasks	General ledger
AMJM10	1	Display Department Status	Production	Data Collection	Data Collection Tasks	Other Data Collection Tasks
AMJM10	5	Display Employee Activity	Production	Data Collection	Data Collection Tasks	Employee Administration
AMJM10	6	Display Employee Information	Production	Data Collection	Data Collection Tasks	Employee Administration
AMJM20	5	Print Employee Status / Activity Report	Production	Data Collection	Data Collection Tasks	Employee Administration
AMJM20	6	Print Purchase Receiving Tickets	Production	Data Collection	Data Collection Tasks	Transactions
AMJM30	1	Maintain Transactions	Production	Data Collection	Data Collection Tasks	Transactions
AMJM30	2	Select and Edit Transactions	Production	Data Collection	Data Collection Tasks	Transactions
AMJM30	3	Prepare Transactions	Production	Data Collection	Data Collection Tasks	Transactions
AMJM30	4	Print Collection Audit List	Production	Data Collection	Data Collection Tasks	Transactions
AMJM30	5	Print Transaction Register	Production	Data Collection	Data Collection Tasks	Transactions
AMJM40	1	Enter / Approve Employee Absence	Production	Data Collection	Data Collection Tasks	Employee Administration
AMJM40	2	Print Employee Absence List	Production	Data Collection	Data Collection Tasks	Employee Administration
AMJM40	3	Print Employee Badges	Production	Data Collection	Data Collection Tasks	Employee Administration
AMJM40	4	Assign Temporary Badge	Production	Data Collection	Data Collection Tasks	Employee Administration
AMJM40	5	Print Temporary Badge List	Production	Data Collection	Data Collection Tasks	Employee Administration
AMJM40	6	Create Data Collection User Profile	Production	Data Collection	Data Collection Tasks	Employee Administration
AMJM50	6	Maintain Employee Master	Production	Data Collection	Data Collection Tasks	Employee Administration
AMJM50	7	Maintain Work Schedule	Production	Data Collection	Data Collection Tasks	Work Schedules

XA Host Menu	Host Menu Option	Host Option/IDF Level 1 Task	Power-Link Application	Power-Link Application Tab	Power-Link Icon / IDF Level 1 Menu	IDF Level 1 Tab
AMJM50	8	Maintain PMC Control File	Production	Data Collection	Data Collection Tasks	Other Data Collection Tasks
AMJM60	1	Print Production Facility	Production	Data Collection	Data Collection Tasks	Other Data Collection Tasks
AMJM60	2	Print Employee Master	Production	Data Collection	Data Collection Tasks	Employee Administration
AMJM60	3	Print Work Schedule	Production	Data Collection	Data Collection Tasks	Work Schedules
AMJM70	1	Print / Purge Transaction Log	Production	Data Collection	Data Collection Tasks	Plant Operations Interface
AMJM70	2	Select Transaction Log Mode	Production	Data Collection	Data Collection Tasks	Plant Operations Interface
AMJM70	3	Select Trace Mode	Production	Data Collection	Data Collection Tasks	Plant Operations Interface
AMJM70	4	Print Transaction Definition – by Transaction ID	Production	Data Collection	Data Collection Tasks	Plant Operations Interface
AMJM70	5	Print Transaction Definition – by Format Name	Production	Data Collection	Data Collection Tasks	Plant Operations Interface
AMJM70	6	Maintain ICF Device Entries / Remote Destinations	Production	Data Collection	Data Collection Tasks	Plant Operations Interface
AMJM70	7	Maintain Remote User Profiles	Production	Data Collection	Data Collection Tasks	Plant Operations Interface
AMLM00	4	Available to Promise	Planning		Master Production Schedule Planning	Main Menu
AMLM00	5	Change/Display Horizon Dates	Planning		Master Production Schedule Planning	Main Menu
AMLM10	1	Aggregate to Production Families	Planning		Master Production Schedule Planning	Production Planning
AMLM10	2	Display and Maintain Family Operating Plans	Planning		Master Production Schedule Planning	Production Planning
AMLM10	3	Test Family Operating Plan Resources	Planning		Master Production Schedule Planning	Production Planning
AMLM10	4	Display Resource Requirements	Planning		Master Production Schedule Planning	Production Planning
AMLM10	5	Display and Maintain Item Trial Plans	Planning		Master Production Schedule Planning	Production Planning
AMLM10	6	Replace Family Base Plans	Planning		Master Production Schedule Planning	Production Planning
AMLM10	7	Replace Item Production Plans	Planning		Master Production Schedule Planning	Production Planning



XA Host Menu	Host Menu Option	Host Option/IDF Level 1 Task	Power-Link Application	Power-Link Application Tab	Power-Link Icon / IDF Level 1 Menu	IDF Level 1 Tab
AMLM10	8	Family Plan Inquiries	Planning		Master Production Schedule Planning	Production Planning
AMLM10	9	Family Operating Plan Report	Planning		Master Production Schedule Planning	Production Planning
AMLM10	10	Display and Maintain Production Families	Planning		Master Production Schedule Planning	Production Planning
AMLM20	1	Generate Master Schedules	Planning		Master Production Schedule Planning	Master Schedule Planning
AMLM20	2	Display and Maintain Master Schedule	Planning		Master Production Schedule Planning	Master Schedule Planning
AMLM20	3	Test Master Schedule Resources	Planning		Master Production Schedule Planning	Master Schedule Planning
AMLM20	4	Display Resource Requirements	Planning		Master Production Schedule Planning	Master Schedule Planning
AMLM20	5	Master Schedule Planning Report	Planning		Master Production Schedule Planning	Master Schedule Planning
AMLM20	6	Available to Promise	Planning		Master Production Schedule Planning	Master Schedule Planning
AMLM20	7	MRP Item Inquiry	Planning		Master Production Schedule Planning	Master Schedule Planning
AMLM30	1	Maintain Resource Master File	Planning		Master Production Schedule Planning	Resource Profile Management
AMLM30	2	Resource Master File List	Planning		Master Production Schedule Planning	Resource Profile Management
AMLM30	3	Generate Resource Profiles	Planning		Master Production Schedule Planning	Resource Profile Management
AMLM30	4	Display and Maintain Resource Profiles	Planning		Master Production Schedule Planning	Resource Profile Management
AMLM30	5	Item Resource Report	Planning		Master Production Schedule Planning	Resource Profile Management
AMMM00	5	Work with Calendars	Materials Management	Inventory	Other Materials Tasks	Other Materials Tasks

XA Host Menu	Host Menu Option	Host Option/IDF Level 1 Task	Power-Link Application	Power-Link Application Tab	Power-Link Icon / IDF Level 1 Menu	IDF Level 1 Tab
AMMM10	1	Maintain Forecast	Planning		Material Planning Tasks	Demand
AMMM10	2	Extract Independent Demand	Planning		Material Planning Tasks	Demand
AMMM10	3	Maintain Master Level Item Schedules	Planning		Material Planning Tasks	Demand
AMMM10	4	Display Item Requirements	Planning		Material Planning Tasks	Demand
AMMM10	5	Work With Warehouses	Planning		Material Planning Tasks	Demand
AMMM10	6	Maintain Expected Customer Orders	Planning		Material Planning Tasks	Demand
AMMM10	7	Print and Purge Expected Customer Orders	Planning		Material Planning Tasks	Demand
AMMM10	8	Maintain Customer Order Filters	Planning		Material Planning Tasks	Demand
AMMM10	9	Display Customer Orders – Filtered	Planning		Material Planning Tasks	Demand
AMMM20	1	Maintain Horizon Values	Planning		Material Planning Tasks	Planning
AMMM20	2	Maintain Period Intervals	Planning		Material Planning Tasks	Planning
AMMM20	3	Work With Warehouses	Planning		Material Planning Tasks	Planning
AMMM20	4	Maintain Planning Run Execution Options	Planning		Material Planning Tasks	Planning
AMMM20	5	Maintain Planning Run Report Options	Planning		Material Planning Tasks	Planning
AMMM20	6	Initiate Planning Run	Planning		Material Planning Tasks	Planning
AMMM20	7	Work With Multi-Source Vendor Quantities	Planning		Material Planning Tasks	Planning
AMMM20	8	Work With Multi-Source Vendor Splittings	Planning		Material Planning Tasks	Planning
AMMM30	1	Print Requirements Planning	Planning		Material Planning Tasks	Planning Reports
AMMM30	2	Print MLI Requirements vs Forecast/Customer Orders	Planning		Material Planning Tasks	Planning Reports
AMMM30	3	Print Purchase Planning	Planning		Material Planning Tasks	Planning Reports
AMMM30	4	Print Order/Schedule Recommendation – Exception Sequence	Planning		Material Planning Tasks	Planning Reports
AMMM30	5	Print Order/Schedule Recommendation – Item Sequence	Planning		Material Planning Tasks	Planning Reports

XA Host Menu	Host Menu Option	Host Option/IDF Level 1 Task	Power-Link Application	Power-Link Application Tab	Power-Link Icon / IDF Level 1 Menu	IDF Level 1 Tab
AMMM30	7	Print Warehouse Relationships	Planning		Material Planning Tasks	Planning Reports
AMMM30	8	Print Reschedule Activity	Planning		Material Planning Tasks	Planning Reports
AMMM30	9	Print Purchase Order Revisions	Planning		Material Planning Tasks	Planning Reports
AMMM30	10	Print Source of Demand	Planning		Material Planning Tasks	Planning Reports
AMMM36	1	Print Planned / Current	Planning		Material Planning Tasks	Cash Flow Reports
AMMM36	2	Print Planned / Standard	Planning		Material Planning Tasks	Cash Flow Reports
AMMM36	3	Print Open / Current	Planning		Material Planning Tasks	Cash Flow Reports
AMMM36	4	Print Open / Standard	Planning		Material Planning Tasks	Cash Flow Reports
AMMM36	5	Print Both / Current	Planning		Material Planning Tasks	Cash Flow Reports
AMMM36	6	Print Both / Standard	Planning		Material Planning Tasks	Cash Flow Reports
AMMM36	7	Work With Cash flow Report Options	Planning		Material Planning Tasks	Cash Flow Reports
AMMM40	4	Display Item Requirements	Planning		Material Planning Tasks	Order/Schedule Release and Review
AMMM40	7	Auto-Release Purchase Orders	Planning		Material Planning Tasks	Order/Schedule Release and Review
AMMM40	8	Enter and Maintain Schedules	Planning		Material Planning Tasks	Order/Schedule Release and Review
AMMM40	10	Work With Purchase Planning Profile	Planning		Material Planning Tasks	Order/Schedule Release and Review
AMMM40	11	Create Purchase Planning Schedules	Planning		Material Planning Tasks	Order/Schedule Release and Review
AMMM40	12	Print and Purge Planning Schedules	Planning		Material Planning Tasks	Order/Schedule Release and Review
AMMM40	13	Auto-Release Intersite Orders	Planning		Material Planning Tasks	Order/Schedule Release and Review
AMMM40	14	Auto-Release Manufacturing Orders	Planning		Material Planning Tasks	Order/Schedule Release and Review
AMPM00	3	Posting	AM Plus and Finance		Payroll	Other Payroll Tasks
AMPM00	5	Checks & Reports	AM Plus and Finance		Payroll	Other Payroll Tasks

XA Host Menu	Host Menu Option	Host Option/IDF Level 1 Task	Power-Link Application	Power-Link Application Tab	Power-Link Icon / IDF Level 1 Menu	IDF Level 1 Tab
AMPM00	9	Check Reconciliation	AM Plus and Finance		Payroll	Other Payroll Tasks
AMPM00	17	Reprint Checks	AM Plus and Finance		Payroll	Other Payroll Tasks
AMPM01	1	Enter from Work Station	AM Plus and Finance		Payroll	Time Adjustment Entry
AMPM01	2	Enter Data from Offline Files	AM Plus and Finance		Payroll	Time Adjustment Entry
AMPM01	3	Print Batch Register	AM Plus and Finance		Payroll	Time Adjustment Entry
AMPM02	1	Enter Checks	AM Plus and Finance		Payroll	Payoffs
AMPM02	2	Print Batch Register	AM Plus and Finance		Payroll	Payoffs
AMPM02	3	Balance	AM Plus and Finance		Payroll	Payoffs
AMPM02	4	Post Checks	AM Plus and Finance		Payroll	Payoffs
AMPM02	5	Reset Balancing	AM Plus and Finance		Payroll	Payoffs
AMPM02	6	Remove Checks	AM Plus and Finance		Payroll	Payoffs
AMPM04	1	Select Records	AM Plus and Finance		Payroll	Calculation
AMPM04	2	Calculate Gross Pay	AM Plus and Finance		Payroll	Calculation
AMPM04	3	Calculate Net Pay	AM Plus and Finance		Payroll	Calculation
AMPM04	4	All of the Above	AM Plus and Finance		Payroll	Calculation
AMPM04	5	Clear	AM Plus and Finance		Payroll	Calculation

XA Host Menu	Host Menu Option	Host Option/IDF Level 1 Task	Power-Link Application	Power-Link Application Tab	Power-Link Icon / IDF Level 1 Menu	IDF Level 1 Tab
AMPM06	1	Print/Clear Detail Report	AM Plus and Finance		Payroll	Monthly Union Report
AMPM06	2	Print/Clear Summary Report	AM Plus and Finance		Payroll	Monthly Union Report
AMPM07	1	Print Temporary General Ledger	AM Plus and Finance		Payroll	Monthly General Ledger
AMPM07	2	Print and Clear Temporary GL	AM Plus and Finance		Payroll	Monthly General Ledger
AMPM08	1	Print Quarterly 941A Register	AM Plus and Finance		Payroll	Quarter / Year-End Processing
AMPM08	2	Print Quarterly 941A Forms	AM Plus and Finance		Payroll	Quarter / Year-End Processing
AMPM08	3	Build/Remove Annual Reporting Data	AM Plus and Finance		Payroll	Quarter / Year-End Processing
AMPM08	4	Print Annual 941A Register	AM Plus and Finance		Payroll	Quarter / Year-End Processing
AMPM08	5	Print Annual 941A Forms	AM Plus and Finance		Payroll	Quarter / Year-End Processing
AMPM08	6	Print W-2 Register	AM Plus and Finance		Payroll	Quarter / Year-End Processing
AMPM08	7	Print W-2 Forms	AM Plus and Finance		Payroll	Quarter / Year-End Processing
AMPM08	8	Prepare W-2 Data for Submission	AM Plus and Finance		Payroll	Quarter / Year-End Processing
AMPM08	9	Reset Annual Master Balances	AM Plus and Finance		Payroll	Quarter / Year-End Processing
AMPM08	10	Reset Deduction Balances	AM Plus and Finance		Payroll	Quarter / Year-End Processing
AMPM08	11	Post External Payments/Withholdings	AM Plus and Finance		Payroll	Quarter / Year-End Processing
AMPM08	12	Reset Other Compensation/Payments	AM Plus and Finance		Payroll	Quarter / Year-End Processing

XA Host Menu	Host Menu Option	Host Option/IDF Level 1 Task	Power-Link Application	Power-Link Application Tab	Power-Link Icon / IDF Level 1 Menu	IDF Level 1 Tab
AMPM08	13	Print/Clear Current Deductions	AM Plus and Finance		Payroll	Quarter / Year-End Processing
AMPM10	1	Employee Master	AM Plus and Finance		Payroll	File Maintenance
AMPM10	2	Employee State/County/Local	AM Plus and Finance		Payroll	File Maintenance
AMPM10	3	Employee Misc. Deduction	AM Plus and Finance		Payroll	File Maintenance
AMPM10	4	Labor Distribution	AM Plus and Finance		Payroll	File Maintenance
AMPM10	5	Tax Table	AM Plus and Finance		Payroll	File Maintenance
AMPM10	6	General Ledger Master	AM Plus and Finance		Payroll	File Maintenance
AMPM10	7	Deduction Distribution	AM Plus and Finance		Payroll	File Maintenance
AMPM10	8	Union Master	AM Plus and Finance		Payroll	File Maintenance
AMPM10	9	Employee Termination/Activation	AM Plus and Finance		Payroll	File Maintenance
AMPM10	10	Employee Other Compensation/Payments	AM Plus and Finance		Payroll	File Maintenance
AMPM10	11	Federal Tax Table Update	AM Plus and Finance		Payroll	File Maintenance
AMPM11	1	Employee Master	AM Plus and Finance		Payroll	File Listings
AMPM11	2	Employee State/County/Local	AM Plus and Finance		Payroll	File Listings
AMPM11	3	Employee Misc. Deduction	AM Plus and Finance		Payroll	File Listings
AMPM11	4	Labor Distribution	AM Plus and Finance		Payroll	File Listings

XA Host Menu	Host Menu Option	Host Option/IDF Level 1 Task	Power-Link Application	Power-Link Application Tab	Power-Link Icon / IDF Level 1 Menu	IDF Level 1 Tab
AMPM11	5	Tax Table	AM Plus and Finance		Payroll	File Listings
AMPM11	7	Deduction Distribution	AM Plus and Finance		Payroll	File Listings
AMPM11	8	Union Master	AM Plus and Finance		Payroll	File Listings
AMPM11	9	Check Reconciliation	AM Plus and Finance		Payroll	File Listings
AMPM11	10	Current Employee	AM Plus and Finance		Payroll	File Listings
AMPM11	11	Pension Deduction	AM Plus and Finance		Payroll	File Listings
AMPM11	12	Employee Other Compensation/Payments	AM Plus and Finance		Payroll	File Listings
AMPM12	1	Employee Master	AM Plus and Finance		Payroll	Inquiry
AMPM12	2	Employee Miscellaneous Deductions	AM Plus and Finance		Payroll	Inquiry
AMPM12	3	Employee Other Compensation/Payments	AM Plus and Finance		Payroll	Inquiry
AMPM12	4	Payroll History	AM Plus and Finance		Payroll	Inquiry
AMPM13	1	Print Remittance Worksheet	AM Plus and Finance		Payroll	Monthly Directed Deductions
AMPM13	2	Calculate New Deduction Balances	AM Plus and Finance		Payroll	Monthly Directed Deductions
AMPM14	1	Archive Current History	AM Plus and Finance		Payroll	History
AMPM14	2	Delete Current History	AM Plus and Finance		Payroll	History
AMPM14	3	Restore Archived History	AM Plus and Finance		Payroll	History

XA Host Menu	Host Menu Option	Host Option/IDF Level 1 Task	Power-Link Application	Power-Link Application Tab	Power-Link Icon / IDF Level 1 Menu	IDF Level 1 Tab
AMPM14	4	Delete Archived History	AM Plus and Finance		Payroll	History
AMPM14	5	Delete Restored History	AM Plus and Finance		Payroll	History
AMPM15	1	Create Prenote Transactions	AM Plus and Finance		Payroll	Electronic Deposit Support
AMPM15	2	Convert Data to NACHA Requirements	AM Plus and Finance		Payroll	Electronic Deposit Support
AMPM16	1	Enter Check Selections	AM Plus and Finance		Payroll	Check Reversal Processing
AMPM16	2	Check Reversal Proof	AM Plus and Finance		Payroll	Check Reversal Processing
AMPM16	3	Edit Check Selections	AM Plus and Finance		Payroll	Check Reversal Processing
AMPM16	4	Post Check Reversals	AM Plus and Finance		Payroll	Check Reversal Processing
AMQM10	3	Display Schedule vs Demand	Production	Rate based	Other Rate Based Production Tasks	Schedule Management
AMQM10	5	Work With Item / Line	Production	Rate based	Other Rate Based Production Tasks	Items / Lines
AMQM10	9	Work With Location / Component	Production	Rate based	Other Rate Based Production Tasks	Items / Lines
AMQM10	10	Work With Component Status	Production	Rate based	Other Rate Based Production Tasks	Items / Lines
AMQM20	2	Print Schedule Performance	Production	Rate based	Other Rate Based Production Tasks	Schedule Management
AMQM20	3	Print Released Schedules	Production	Rate based	Other Rate Based Production Tasks	Production Schedules
AMQM20	4	Print Production Schedules	Production	Rate based	Other Rate Based Production Tasks	Production Schedules
AMQM20	5	Print Item / Line Process	Production	Rate based	Other Rate Based Production Tasks	Items / Lines



XA Host Menu	Host Menu Option	Host Option/IDF Level 1 Task	Power-Link Application	Power-Link Application Tab	Power-Link Icon / IDF Level 1 Menu	IDF Level 1 Tab
AMQM20	6	Print Item / Line	Production	Rate based	Other Rate Based Production Tasks	Items / Lines
AMQM20	7	Print WIP Cost	Production	Rate based	Other Rate Based Production Tasks	Items / Lines
AMQM20	8	Print Item Balance Audit	Production	Rate based	Other Rate Based Production Tasks	Items / Lines
AMQM20	9	Print Item / Line Audit	Production	Rate based	Other Rate Based Production Tasks	Items / Lines
AMQM20	10	Print Location Audit	Production	Rate based	Other Rate Based Production Tasks	Items / Lines
AMQM30	1	Prime Production Lines	Production	Rate based	Other Rate Based Production Tasks	Material
AMQM30	2	Print Pick List	Production	Rate based	Other Rate Based Production Tasks	Material
AMQM30	3	Print Container Labels	Production	Rate based	Other Rate Based Production Tasks	Material
AMQM30	4	Print Component Return List	Production	Rate based	Other Rate Based Production Tasks	Material
AMQM30	5	Enter Repetitive Transactions	Production	Rate based	Other Rate Based Production Tasks	Transactions
AMQM30	6	Enter Offline Repetitive Transactions	Production	Rate based	Other Rate Based Production Tasks	Transactions
AMQM30	7	Enter Inventory Transactions	Production	Rate based	Other Rate Based Production Tasks	Transactions
AMQM30	8	Print Transaction Register	Production	Rate based	Other Rate Based Production Tasks	Transactions
AMQM40	1	Set Schedule Review/Release Horizon	Production	Rate based	Other Rate Based Production Tasks	Schedule Management
AMQM40	2	Maintain Customer Manufacturing Dates	Production	Rate based	Other Rate Based Production Tasks	Schedule Management
AMQM40	3	Extract Schedule Requirements	Production	Rate based	Other Rate Based Production Tasks	Schedule Management

XA Host Menu	Host Menu Option	Host Option/IDF Level 1 Task	Power-Link Application	Power-Link Application Tab	Power-Link Icon / IDF Level 1 Menu	IDF Level 1 Tab
AMQM40	4	Enter and Maintain Schedules	Production	Rate based	Other Rate Based Production Tasks	Production Schedules
AMQM40	5	Sequence Schedules	Production	Rate based	Other Rate Based Production Tasks	Production Schedules
AMQM40	6	Release Schedules	Production	Rate based	Other Rate Based Production Tasks	Production Schedules
AMQM40	7	Print Schedule Information	Production	Rate based	Other Rate Based Production Tasks	Production Schedules
AMQM40	8	Purge Schedules	Production	Rate based	Other Rate Based Production Tasks	Production Schedules
AMQM40	9	Review Schedule Performance	Production	Rate based	Other Rate Based Production Tasks	Schedule Management
AMQM40	10	Recalculate Schedules	Production	Rate based	Other Rate Based Production Tasks	Schedule Management
AMQM50	2	Work With Released Schedules	Production	Rate based	Other Rate Based Production Tasks	Production Schedules
AMQM50	3	Work With Item / Line	Production	Rate based	Other Rate Based Production Tasks	Items / Lines
AMQM50	9	Work With Location / Component	Production	Rate based	Other Rate Based Production Tasks	Items / Lines
AMQM50	10	Work With Repetitive Control File	Production	Rate based	Other Rate Based Production Tasks	Other Repetitive Tasks
AMQM50	11	Maintain Variable Capacity	Production	Rate based	Other Rate Based Production Tasks	Other Repetitive Tasks
AMQM61	1	Maintain Assignment Rules	AM Plus	General Ledger	Rate Based Production GL Interface Tasks	Account Assignment Rules
AMQM61	1	Maintain Assignment Rules	Finance	Rate Based Production GL Interface	Rate Based Production GL Interface Tasks	Account Assignment Rules
AMQM61	2	Maintain Account Assignment Rule Sequences	AM Plus	General Ledger	Rate Based Production GL Interface Tasks	Account Assignment Rules

XA Host Menu	Host Menu Option	Host Option/IDF Level 1 Task	Power-Link Application	Power-Link Application Tab	Power-Link Icon / IDF Level 1 Menu	IDF Level 1 Tab
AMQM61	2	Maintain Acct Assignment Rule Sequences	Finance	Rate Based Production GL Interface	Rate Based Production GL Interface Tasks	Account Assignment Rules
AMQM61	3	Simulate Account Assignments	AM Plus	General Ledger	Rate Based Production GL Interface Tasks	Account Assignment Rules
AMQM61	3	Simulate Account Assignments	Finance	Rate Based Production GL Interface	Rate Based Production GL Interface Tasks	Account Assignment Rules
AMQM61	4	Maintain Intercompany Accounts	AM Plus	General Ledger	Rate Based Production GL Interface Tasks	Intercompany Accounts
AMQM61	4	Maintain Intercompany Accounts	Finance	Rate Based Production GL Interface	Rate Based Production GL Interface Tasks	Intercompany Accounts
AMQM61	5	Print Account Assignment Rules	AM Plus	General Ledger	Rate Based Production GL Interface Tasks	Account Assignment Rules
AMQM61	5	Print Account Assignment Rules	Finance	Rate Based Production GL Interface	Rate Based Production GL Interface Tasks	Account Assignment Rules
AMQM61	6	Print Account Assignment Rule Sequences	AM Plus	General Ledger	Rate Based Production GL Interface Tasks	Account Assignment Rules
AMQM61	6	Print Account Assignment Rule Sequences	Finance	Rate Based Production GL Interface	Rate Based Production GL Interface Tasks	Account Assignment Rules
AMQM61	7	Print Intercompany Accounts List	AM Plus	General Ledger	Rate Based Production GL Interface Tasks	Intercompany Accounts
AMQM61	7	Print Intercompany Accounts List	Finance	Rate Based Production GL Interface	Rate Based Production GL Interface Tasks	Intercompany Accounts
AMQM62	1	Assign Accounts	AM Plus	General Ledger	Rate Based Production GL Interface Tasks	Transactions

XA Host Menu	Host Menu Option	Host Option/IDF Level 1 Task	Power-Link Application	Power-Link Application Tab	Power-Link Icon / IDF Level 1 Menu	IDF Level 1 Tab
AMQM62	1	Assign Accounts	Finance	Rate Based Production GL Interface	Rate Based Production GL Interface Tasks	Transactions
AMQM62	2	Work With Assigned Accounts	AM Plus	General Ledger	Rate Based Production GL Interface Tasks	Transactions
AMQM62	2	Work With Assigned Accounts	Finance	Rate Based Production GL Interface	Rate Based Production GL Interface Tasks	Transactions
AMQM63	1	Create Ledger Entries	AM Plus	General Ledger	Rate Based Production GL Interface Tasks	Transactions
AMQM63	1	Create Ledger Entries	Finance	Rate Based Production GL Interface	Rate Based Production GL Interface Tasks	Transactions
AMQM63	2	Print Temporary General Ledger	AM Plus	General Ledger	Rate Based Production GL Interface Tasks	General Ledger
AMQM63	3	Clear Temporary General Ledger	AM Plus	General Ledger	Rate Based Production GL Interface Tasks	General Ledger
AMQM63	4	Maintain Transaction Types	AM Plus	General Ledger	Rate Based Production GL Interface Tasks	Transaction Types
AMQM63	4	Maintain Transaction Types	Finance	Rate Based Production GL Interface	Rate Based Production GL Interface Tasks	Transaction Types
AMQM63	5	Maintain General Ledger	AM Plus	General Ledger	Other GL Tasks	General ledger
AMQM70	10	Work With Item / Line	Production	Rate based	Other Rate Based Production Tasks	Items / Lines
AMQM70	11	Work With Location / Component	Production	Rate based	Other Rate Based Production Tasks	Items / Lines
AMQM70	12	Work With Component Status	Production	Rate based	Other Rate Based Production Tasks	Items / Lines
AMRM00	2	Close Month	AM Plus	Accounts Receivable	Other AR Tasks	AR Transactions

XA Host Menu	Host Menu Option	Host Option/IDF Level 1 Task	Power-Link Application	Power-Link Application Tab	Power-Link Icon / IDF Level 1 Menu	IDF Level 1 Tab
AMRM00	8	Revalue AR Invoices	AM Plus	Accounts Receivable	Other AR Tasks	AR Transactions
AMRM10	2	Enter Invoice or Credit Memos	AM Plus	Accounts Receivable	Other AR Tasks	AR Transactions
AMRM10	3	Post Transactions	AM Plus	Accounts Receivable	Other AR Tasks	AR Transactions
AMRM10	4	List All Offline Invoice Edits	AM Plus	Accounts Receivable	Other AR Tasks	AR Transactions
AMRM10	5	List Offline Invoice Errors	AM Plus	Accounts Receivable	Other AR Tasks	AR Transactions
AMRM20	3	Purge Paid Item	AM Plus	Accounts Receivable	Other AR Tasks	AR Transactions
AMRM20	4	Clear Old Statement Files	AM Plus	Accounts Receivable	Other AR Tasks	Statements
AMRM20	5	Load Initial File Balances	AM Plus	Accounts Receivable	Other AR Tasks	AR Transactions
AMRM20	6	Load Initial File Cash & Adjustments	AM Plus	Accounts Receivable	Other AR Tasks	AR Transactions
AMRM20	7	Load Initial File Updates	AM Plus	Accounts Receivable	Other AR Tasks	AR Transactions
AMRM20	8	Maintain General Ledger	AM Plus	Accounts Receivable	Other AR Tasks	General Ledger
AMRM20	9	Print Chart of Accounts	AM Plus	Accounts Receivable	Other AR Tasks	General Ledger
AMRM20	10	Print Temporary General Ledger	AM Plus	Accounts Receivable	Other AR Tasks	General Ledger
AMRM20	11	Print and Clear Temporary General Ledger	AM Plus	Accounts Receivable	Other AR Tasks	General Ledger
AMRM20	12	Maintain Statement Messages	AM Plus	Accounts Receivable	Other AR Tasks	Statements
AMRM20	13	Print Statement Messages	AM Plus	Accounts Receivable	Other AR Tasks	Statements

XA Host Menu	Host Menu Option	Host Option/IDF Level 1 Task	Power-Link Application	Power-Link Application Tab	Power-Link Icon / IDF Level 1 Menu	IDF Level 1 Tab
AMRM20	14	Maintain Delinquency Messages	AM Plus	Accounts Receivable	Other AR Tasks	Delinquency Notices
AMRM20	15	Print Delinquency Messages	AM Plus	Accounts Receivable	Other AR Tasks	Delinquency Notices
AMRM20	16	Maintain Delinquency Captions	AM Plus	Accounts Receivable	Other AR Tasks	Delinquency Notices
AMRM20	17	Print Delinquency Captions	AM Plus	Accounts Receivable	Other AR Tasks	Delinquency Notices
AMRM30	1	Archive Current History	AM Plus	Accounts Receivable	Other AR Tasks	History
AMRM30	2	Delete Current History	AM Plus	Accounts Receivable	Other AR Tasks	History
AMRM30	3	Restore Archived History	AM Plus	Accounts Receivable	Other AR Tasks	History
AMRM30	4	Delete Archived History	AM Plus	Accounts Receivable	Other AR Tasks	History
AMRM30	5	Delete Restored History	AM Plus	Accounts Receivable	Other AR Tasks	History
AMRM50	1	Print Accounts Receivables Analysis	AM Plus	Accounts Receivable	Other AR Tasks	Reports
AMRM50	2	Print Aged Receivables	AM Plus	Accounts Receivable	Other AR Tasks	Reports
AMRM50	3	Print Aged Trail Balance	AM Plus	Accounts Receivable	Other AR Tasks	Reports
AMRM50	4	Print Multiple Currency AR Analysis	AM Plus	Accounts Receivable	Other AR Tasks	Reports
AMRM50	5	Print Multiple Currency Aged Receivables	AM Plus	Accounts Receivable	Other AR Tasks	Reports
AMRM50	6	Print Transaction Gains and Losses	AM Plus	Accounts Receivable	Other AR Tasks	Reports
AMRM50	7	Print Gains and Losses By Period	AM Plus	Accounts Receivable	Other AR Tasks	Reports

XA Host Menu	Host Menu Option	Host Option/IDF Level 1 Task	Power-Link Application	Power-Link Application Tab	Power-Link Icon / IDF Level 1 Menu	IDF Level 1 Tab
AMRM50	8	Print Actual Aged Receivables	AM Plus	Accounts Receivable	Other AR Tasks	Reports
AMTM10	1	Enter/Review Planning Parameters	Planning	Capacity Planning	Capacity Requirements Planning	Planning Run Control
AMTM10	2	Variable Capacity Maintenance	Planning	Capacity Planning	Capacity Requirements Planning	Planning Run Control
AMTM10	3	Work Center Variable Capacity Inquiry	Planning	Capacity Planning	Capacity Requirements Planning	Planning Run Control
AMTM10	6	Work Load Extract	Planning	Capacity Planning	Capacity Requirements Planning	Planning Run Control
AMTM10	7	Schedule and Accumulate Work Load	Planning	Capacity Planning	Capacity Requirements Planning	Planning Run Control
AMTM10	8	Delete Capacity Planning Work Files	Planning	Capacity Planning	Capacity Requirements Planning	Planning Run Control
AMTM20	1	Work Center Load Analysis Detail	Planning	Capacity Planning	Capacity Requirements Planning	Inquiry
AMTM20	2	Work Center Variable Capacity	Planning	Capacity Planning	Capacity Requirements Planning	Inquiry
AMTM30	1	Work Center Load Analysis - by W/C	Planning	Capacity Planning	Capacity Requirements Planning	Reports
AMTM30	2	Work Center Load Analysis - by Department	Planning	Capacity Planning	Capacity Requirements Planning	Reports
AMTM30	3	Work Center Load Analysis Detail	Planning	Capacity Planning	Capacity Requirements Planning	Reports
AMTM30	4	Work Center Capacity Report - by W/C	Planning	Capacity Planning	Capacity Requirements Planning	Reports
AMTM30	5	Work Center Capacity Report - by Department	Planning	Capacity Planning	Capacity Requirements Planning	Reports
AMTM30	6	Production Facility Report - by Facility	Planning	Capacity Planning	Capacity Requirements Planning	Reports
AMTM30	7	Production Facility Report - by Department	Planning	Capacity Planning	Capacity Requirements Planning	Reports

XA Host Menu	Host Menu Option	Host Option/IDF Level 1 Task	Power-Link Application	Power-Link Application Tab	Power-Link Icon / IDF Level 1 Menu	IDF Level 1 Tab
AMZM10	2	Job Status	Environment	Settings	CAS Maintenance	Inquiry
AMZM10	3	Data Entry File Status	Environment	Settings	CAS Maintenance	Inquiry
AMZM10	4	Questionnaire Responses - by Application	Environment	Settings	CAS Maintenance	Inquiry
AMZM10	5	Questionnaire Responses - by Question	Environment	Settings	CAS Maintenance	Inquiry
AMZM10	6	System Control Data - Field Format	Environment	Settings	CAS Maintenance	Inquiry
AMZM10	7	System Control Data - Character Format	Environment	Settings	CAS Maintenance	Inquiry
AMZM10	8	PTF Status	Environment	Settings	CAS Maintenance	Inquiry
AMZM10	10	Unattached Job Status	Environment	Settings	CAS Maintenance	Inquiry
AMZM20	2	File Status Listing	Environment	Settings	CAS Maintenance	Reports
AMZM20	3	Questionnaire Responses	Environment	Settings	CAS Maintenance	Reports
AMZM20	4	Data Dictionary	Environment	Settings	CAS Maintenance	Reports
AMZM20	5	File Record Layout	Environment	Settings	CAS Maintenance	Reports
AMZM20	7	Field/File Where Used	Environment	Settings	CAS Maintenance	Reports
AMZM30	1	Job Status	Environment	Settings	CAS Maintenance	Maintenance/Change
AMZM30	2	Assign Workstation ID	Environment	Settings	CAS Maintenance	Maintenance/Change
AMZM30	9	System Control Data - Field Format	Environment	Settings	CAS Maintenance	Maintenance/Change
AMZM30	10	System Control Data - Character Format	Environment	Settings	CAS Maintenance	Maintenance/Change
AMZM30	12	Unattached Job Status	Environment	Settings	CAS Maintenance	Maintenance/Change
AMZM30	15	Trigger Program Control Maintenance	Environment	Settings	CAS Maintenance	Maintenance/Change
AMZM30	16	Activate User Exits	Environment	Settings	CAS Maintenance	Maintenance/Change
AMZM30	16	Activate Application Exits	Customer Service	Customer Service	Other Customer Service Tasks	Application Administration
AMZM30	16	Activate Application Exits	Customer Service	Customer Service	Other Customer Service Tasks	Application Administration
AMZM30	18	Trigger Instance Maintenance	Environment	Settings	CAS Maintenance	Maintenance/Change
AMZM33	1	Session	Environment	Settings	CAS Maintenance	Printer Override Maintenance



XA Host Menu	Host Menu Option	Host Option/IDF Level 1 Task	Power-Link Application	Power-Link Application Tab	Power-Link Icon / IDF Level 1 Menu	IDF Level 1 Tab
AMZM33	2	Workstation	Environment	Settings	CAS Maintenance	Printer Override Maintenance
AMZM33	3	User	Environment	Settings	CAS Maintenance	Printer Override Maintenance
AMZM33	4	User/Report	Environment	Settings	CAS Maintenance	Printer Override Maintenance
AMZM33	5	Company	Environment	Settings	CAS Maintenance	Printer Override Maintenance
AMZM33	6	Company/Report	Environment	Settings	CAS Maintenance	Printer Override Maintenance
AMZM33	7	Warehouse	Environment	Settings	CAS Maintenance	Printer Override Maintenance
AMZM33	8	Warehouse/Report	Environment	Settings	CAS Maintenance	Printer Override Maintenance
AMZM33	9	Report	Environment	Settings	CAS Maintenance	Printer Override Maintenance
AMZM33	10	Group	Environment	Settings	CAS Maintenance	Printer Override Maintenance
AMZM35	1	Restore Source File to Maintenance Libra	Environment	Settings	CAS Maintenance	Application Maintenance
AMZM35	2	Modify/Create Programs or Files	Environment	Settings	CAS Maintenance	Application Maintenance
AMZM35	3	Maintain Message File - MESSGE	Environment	Settings	CAS Maintenance	Application Maintenance
AMZM35	4	Maintain Online Source File - AXXSRC	Environment	Settings	CAS Maintenance	Application Maintenance
AMZM35	6	Save Source File	Environment	Settings	CAS Maintenance	Application Maintenance
AMZM35	7	Restore/Save Maintenance Library	Environment	Settings	CAS Maintenance	Application Maintenance
AMZM35	8	Delete Maintenance Library	Environment	Settings	CAS Maintenance	Application Maintenance
AMZM35	9	Apply ECS PTF To Test Library	Environment	Settings	CAS Maintenance	Application Maintenance
AMZM35	10	Restore Files to Maintenance Library	Environment	Settings	CAS Maintenance	Application Maintenance
AMZM36	1	Maintain Job Queue	Environment	Settings	CAS Maintenance	Job Queue Maintenance
AMZM36	2	Print Job Control by Applications	Environment	Settings	CAS Maintenance	Job Queue Maintenance
AMZM36	3	Print Job Control by Job Queue	Environment	Settings	CAS Maintenance	Job Queue Maintenance
AMZM38	1	Area and task authorizations	Environment	Settings	CAS Maintenance	Security Maintenance
AMZM38	2	User authorizations	Environment	Settings	CAS Maintenance	Security Maintenance
AMZM38	3	Data group and task authorizations	Environment	Settings	CAS Maintenance	Security Maintenance
AMZM38	4	Generate reports	Environment	Settings	CAS Maintenance	Security Maintenance
AMZM38	5	Work With XA User Profiles	Environment	Settings	CAS Maintenance	Security Maintenance
AMZM38	6	Work with Client Data Connection User Profile	Environment	Settings	CAS Maintenance	Security Maintenance

XA Host Menu	Host Menu Option	Host Option/IDF Level 1 Task	Power-Link Application	Power-Link Application Tab	Power-Link Icon / IDF Level 1 Menu	IDF Level 1 Tab
AMZM3D	1	Applications	Environment	Settings	CAS Maintenance	Work with Logic Information
AMZM3D	2	Work with Application Menus	Environment	Settings	CAS Maintenance	Work with Logic Information
AMZM3D	3	Work with Menu Options	Environment	Settings	CAS Maintenance	Work with Logic Information
AMZM3D	4	Work with Program Details	Environment	Settings	CAS Maintenance	Work with Logic Information
AMZM3D	5	Print SYSCTL Record Layouts	Environment	Settings	CAS Maintenance	Work with Logic Information
AMZM3D	6	Print Local Data Area Layout	Environment	Settings	CAS Maintenance	Work with Logic Information
AMZM3E	1	Work with Menus	Environment	Settings	CAS Maintenance	Menu Maintenance
AMZM3E	2	Work with Actions	Environment	Settings	CAS Maintenance	Menu Maintenance
AMZM3E	3	Work with Tasks	Environment	Settings	CAS Maintenance	Menu Maintenance
AMZM3H	1	Synchronize Security Files	Environment	Settings	CAS Maintenance	Tools Maintenance
AMZM40	4	Reorganize Master Files	Environment	Settings	CAS Backup/Recovery	Back Up/Recover/Reorganize
AMZM41	4	Copy Disk Backup to Tape	Environment	Settings	CAS Backup/Recovery	Back Up Files
AMZM41	5	Change Backup Options	Environment	Settings	CAS Backup/Recovery	Back Up Files
AMZM45	1	Schedule Unattended Backup	Environment	Settings	CAS Backup/Recovery	Back Up Common Data Library
AMZM45	4	Copy Disk Backup to Tape	Environment	Settings	CAS Backup/Recovery	Back Up Common Data Library
AMZM45	5	Change Backup Options	Environment	Settings	CAS Backup/Recovery	Back Up Common Data Library
AMZM46	3	Copy Disk Backup to Tape	Environment	Settings	CAS Backup/Recovery	Back Up Common Program Library
AMZM47	1	Recover Library from Tape	Environment	Settings	CAS Backup/Recovery	Recover Common Data Library
AMZM47	2	Recover Library from Disk	Environment	Settings	CAS Backup/Recovery	Recover Common Data Library
AMZM50	1	File Backup Tapes	Environment	Settings	CAS Backup/Recovery	Initialize Tapes
AMZM50	2	Application Library Backup Tapes	Environment	Settings	CAS Backup/Recovery	Initialize Tapes
AMZM50	3	Application History Tapes	Environment	Settings	CAS Backup/Recovery	Initialize Tapes
AMZM50	4	Common Data Library Backup Tapes	Environment	Settings	CAS Backup/Recovery	Initialize Tapes
AMZM50	5	Common Program Library Backup Tapes	Environment	Settings	CAS Backup/Recovery	Initialize Tapes
AMZMA0	1	Display Currency IDs	Environment	Settings	CAS Maintenance	Multiple Currency Support
AMZMA0	2	Display Exchange Rates	Environment	Settings	CAS Maintenance	Multiple Currency Support
AMZMA0	3	Display Exchange Rate Trend	Environment	Settings	CAS Maintenance	Multiple Currency Support
AMZMA0	4	Convert Currency Amounts	Environment	Settings	CAS Maintenance	Multiple Currency Support
AMZMA0	5	Print Currency IDs	Environment	Settings	CAS Maintenance	Multiple Currency Support

XA Host Menu	Host Menu Option	Host Option/IDF Level 1 Task	Power-Link Application	Power-Link Application Tab	Power-Link Icon / IDF Level 1 Menu	IDF Level 1 Tab
AMZMA0	6	Print Exchange Rates By Currency ID	Environment	Settings	CAS Maintenance	Multiple Currency Support
AMZMA0	7	Print Exchange Rates By Effective Date	Environment	Settings	CAS Maintenance	Multiple Currency Support
AMZMA0	8	Maintain Currency IDs	Environment	Settings	CAS Maintenance	Multiple Currency Support
AMZMA0	9	Maintain Exchange Rates	Environment	Settings	CAS Maintenance	Multiple Currency Support
AMZMA0	10	Synchronize Company/SYSCTL with Currency	Environment	Settings	CAS Maintenance	Multiple Currency Support
AMZMB0	1	Display Tax Table	Environment	Settings	CAS Maintenance	VAT/Sales Tax Support
AMZMB0	2	Print Tax Table	Environment	Settings	CAS Maintenance	VAT/Sales Tax Support
AMZMB0	3	Maintain Tax Table	Environment	Settings	CAS Maintenance	VAT/Sales Tax Support
AMZMB0	03	Tax Rules	Customer Service	Codes	Other Customer Service Codes	Tax Codes
AMZMB0	4	Archive/Delete Tax History	Environment	Settings	CAS Maintenance	VAT/Sales Tax Support
AMZMB0	5	Restore Archived Tax History	Environment	Settings	CAS Maintenance	VAT/Sales Tax Support
AMZMB0	6	Delete Online Tax History	Environment	Settings	CAS Maintenance	VAT/Sales Tax Support
AMZMB0	7	Delete Archive Control Records	Environment	Settings	CAS Maintenance	VAT/Sales Tax Support
AMZMB0	8	Print Tax Reports	Environment	Settings	CAS Maintenance	VAT/Sales Tax Support
AMZMB0	9	Print Invoice Tax Register	Environment	Settings	CAS Maintenance	VAT/Sales Tax Support
AMZMB0	14	Maintain Tax Group Codes	Environment	Settings	CAS Maintenance	VAT/Sales Tax Support
AMZMB0	14	Tax Groups	Customer Service	Codes	Other Customer Service Codes	Tax Codes
AMZMBA	9	EEC Company Branches	Environment	Settings	CAS Maintenance	EEC VAT Table Maintenance
AMZMC0	1	Activate EDI Functions	Environment	Settings	CAS Maintenance	Electronic Data Interchange Support
AMZMC0	2	Deactivate EDI Functions	Environment	Settings	CAS Maintenance	Electronic Data Interchange Support
AMZMC0	3	Maintain Trading Partners	Environment	Settings	CAS Maintenance	Electronic Data Interchange Support
AMZMC0	4	List Trading Partners	Environment	Settings	CAS Maintenance	Electronic Data Interchange Support

XA Host Menu	Host Menu Option	Host Option/IDF Level 1 Task	Power-Link Application	Power-Link Application Tab	Power-Link Icon / IDF Level 1 Menu	IDF Level 1 Tab
AXAM00	3	Initiate Load/Putback	Planning	Advanced Planner	APS Bridge	Main Menu
AXAM00	4	Review Load Messages	Planning	Advanced Planner	APS Bridge	Main Menu
AXAM00	5	Review and Approve Putback Messages	Planning	Advanced Planner	APS Bridge	Main Menu
AXAM01	1	Interface Control	Planning	Advanced Planner	APS Bridge	Maintenance
AXAM01	2	Hold Code Filters	Planning	Advanced Planner	APS Bridge	Maintenance
AXAM01	3	Customer Order Backlog Offline Load	Planning	Advanced Planner	APS Bridge	Maintenance
AXAM01	4	Period Forecast Offline Load	Planning	Advanced Planner	APS Bridge	Maintenance
AXAM01	5	Putback Transaction Tailoring Offline Load	Planning	Advanced Planner	APS Bridge	Maintenance
AXAM01	6	Putback Transaction Tailoring	Planning	Advanced Planner	APS Bridge	Maintenance
AXAM02	1	Customer Orders on Hold	Planning	Advanced Planner	APS Bridge	Inquiry
AXGM00	1	Maintain A/R Aging Days	AM Plus		Other AM Plus Tasks	Other AM Plus Tasks
AXGM00	2	Maintain A/P Aging Days	AM Plus		Other AM Plus Tasks	Other AM Plus Tasks
AXGM00	3	Run Nightly Aging	AM Plus		Other AM Plus Tasks	Other AM Plus Tasks
AXGM00	4	Schedule Nightly Aging Job	AM Plus		Other AM Plus Tasks	Other AM Plus Tasks
AXGM00	5	Print Date Check Report	AM Plus		Other AM Plus Tasks	Other AM Plus Tasks
AXGM00	6	Regenerate Data	AM Plus		Other AM Plus Tasks	Other AM Plus Tasks
AXGM00	7	Define General Ledger Extracts	AM Plus		Other AM Plus Tasks	Other AM Plus Tasks
AXIM10	1	Work With Orders	Materials Management	Materials Logistics	InterSite Logistics	Work With InterSite Orders
AXIM10	2	Release Orders	Materials Management	Materials Logistics	InterSite Logistics	Work With InterSite Orders

XA Host Menu	Host Menu Option	Host Option/IDF Level 1 Task	Power-Link Application	Power-Link Application Tab	Power-Link Icon / IDF Level 1 Menu	IDF Level 1 Tab
AXIM10	3	Work With Order Locks by Shipping Warehouse	Materials Management	Materials Logistics	InterSite Logistics	Work With InterSite Orders
AXIM20	1	Ship InterSite Orders	Materials Management	Materials Logistics	InterSite Logistics	Ship/Receive InterSite Orders
AXIM20	2	Receive InterSite Orders	Materials Management	Materials Logistics	InterSite Logistics	Ship/Receive InterSite Orders
AXIM20	3	ISL Transaction Register	Materials Management	Materials Logistics	InterSite Logistics	Ship/Receive InterSite Orders
AXIM20	4	InterSite Manifest Inquiry/Print	Materials Management	Materials Logistics	InterSite Logistics	Ship/Receive InterSite Orders
AXIM20	5	InterSite Blank Manifest Entry/Print	Materials Management	Materials Logistics	InterSite Logistics	Ship/Receive InterSite Orders
AXIM20	6	InterSite Manifest Purge	Materials Management	Materials Logistics	InterSite Logistics	Ship/Receive InterSite Orders
AXIM30	1	InterSite Order History Inquiry	Materials Management	Materials Logistics	InterSite Logistics	InterSite Order History
AXIM30	2	InterSite Order History Purge	Materials Management	Materials Logistics	InterSite Logistics	InterSite Order History
AXIM30	3	InterSite Order Shipment History Inquiry	Materials Management	Materials Logistics	InterSite Logistics	InterSite Order History
AXIM30	4	InterSite Order Shipment History Purge	Materials Management	Materials Logistics	InterSite Logistics	InterSite Order History
AXIM40	1	Work With ISL Warehouses	Materials Management	Materials Logistics	InterSite Logistics	InterSite Defaults
AXIM40	2	Work With Planner/Vendor Defaults	Materials Management	Materials Logistics	InterSite Logistics	InterSite Defaults
AXIM40	3	Work With Item Defaults	Materials Management	Materials Logistics	InterSite Logistics	InterSite Defaults
AXIM40	4	Work With Default Shipping Locations	Materials Management	Materials Logistics	InterSite Logistics	InterSite Defaults
AXIM40	5	Work With Default Receiving Locations	Materials Management	Materials Logistics	InterSite Logistics	InterSite Defaults

XA Host Menu	Host Menu Option	Host Option/IDF Level 1 Task	Power-Link Application	Power-Link Application Tab	Power-Link Icon / IDF Level 1 Menu	IDF Level 1 Tab
AXIM50	1	ISL Function Tailoring	Materials Management	Materials Logistics	InterSite Logistics	InterSite Setup
AXIM50	2	ISL Function Tailoring Report	Materials Management	Materials Logistics	InterSite Logistics	InterSite Setup
AXMM10	1	Work With Orders	Materials Management	Materials Logistics	Multi-Environment Intersite Logistics	Work With InterSite Orders
AXMM10	2	Release Orders	Materials Management	Materials Logistics	Multi-Environment Intersite Logistics	Work With InterSite Orders
AXMM10	3	Work With Order Locks by Shipping Warehouse	Materials Management	Materials Logistics	Multi-Environment Intersite Logistics	Work With InterSite Orders
AXMM10	4	Demand Distribution Status	Materials Management	Materials Logistics	Multi-Environment Intersite Logistics	Work With InterSite Orders
AXMM20	1	Ship InterSite Orders	Materials Management	Materials Logistics	Multi-Environment Intersite Logistics	Ship/Receive InterSite Orders
AXMM20	2	Receive InterSite Orders	Materials Management	Materials Logistics	Multi-Environment Intersite Logistics	Ship/Receive InterSite Orders
AXMM20	3	Transaction Register	Materials Management	Materials Logistics	Multi-Environment Intersite Logistics	Ship/Receive InterSite Orders
AXMM20	4	InterSite Manifest Inquiry/Print	Materials Management	Materials Logistics	Multi-Environment Intersite Logistics	Ship/Receive InterSite Orders
AXMM20	5	InterSite Blank Manifest Entry/Print	Materials Management	Materials Logistics	Multi-Environment Intersite Logistics	Ship/Receive InterSite Orders
AXMM20	6	Check Remote Transaction Status	Materials Management	Materials Logistics	Multi-Environment Intersite Logistics	Ship/Receive InterSite Orders
AXMM20	7	InterSite Manifest Purge	Materials Management	Materials Logistics	Multi-Environment Intersite Logistics	Ship/Receive InterSite Orders
AXMM30	1	InterSite Order History Inquiry	Materials Management	Materials Logistics	Multi-Environment Intersite Logistics	InterSite Order History
AXMM30	2	InterSite Order History Purge	Materials Management	Materials Logistics	Multi-Environment Intersite Logistics	InterSite Order History
AXMM30	3	InterSite Order Shipment History Inquiry	Materials Management	Materials Logistics	Multi-Environment Intersite Logistics	InterSite Order History

XA Host Menu	Host Menu Option	Host Option/IDF Level 1 Task	Power-Link Application	Power-Link Application Tab	Power-Link Icon / IDF Level 1 Menu	IDF Level 1 Tab
AXMM30	4	InterSite Order Shipment History Purge	Materials Management	Materials Logistics	Multi-Environment Intersite Logistics	InterSite Order History
AXMM40	1	Work With ISL Warehouses	Materials Management	Materials Logistics	Multi-Environment Intersite Logistics	InterSite Defaults
AXMM40	2	Work With Planner/Vendor Defaults	Materials Management	Materials Logistics	Multi-Environment Intersite Logistics	InterSite Defaults
AXMM40	3	Work With Item Defaults	Materials Management	Materials Logistics	Multi-Environment Intersite Logistics	InterSite Defaults
AXMM40	4	Work With Default Shipping Locations	Materials Management	Materials Logistics	Multi-Environment Intersite Logistics	InterSite Defaults
AXMM40	5	Work With Default Receiving Locations	Materials Management	Materials Logistics	Multi-Environment Intersite Logistics	InterSite Defaults
AXMM40	6	Work With Remote Transfer Warehouses	Materials Management	Materials Logistics	Multi-Environment Intersite Logistics	InterSite Defaults
AXMM50	1	Functional Tailoring	Materials Management	Materials Logistics	Multi-Environment Intersite Logistics	InterSite Setup
AXMM50	2	Functional Tailoring Report	Materials Management	Materials Logistics	Multi-Environment Intersite Logistics	InterSite Setup
n/a	n/a	Create Finance Transaction from Debit Memo	Procurement	Procurement	Other Procurement Tasks	Vendors
UAHDXFR		Maintain Defaults	Finance	Administration	Application Administration Tasks	Application Administration

## Appendix B: Infor ERP XA Host Menu/Option and Power-Link Application and Object Cross-Reference

Menu	Option	Option Description	Application	Business Object	Primary Object	Comment
AM5M2B	01	Age Ledger Balances	Finance	Personal Accounts		
AM5M2B	02	Extract Collection Status	Finance	Personal Accounts		
AM5M2C	04	Generate Statements	Finance	Personal Accounts		
AM5M3A	07	Age Ledger Balances	Finance	Personal Accounts		
AM5M3A	08	Generate Statements	Finance	Personal Accounts		
AM5M40	06	General Ledger Inquiry	Finance	General Ledger Inquiry		
AM5M47	03	General Ledger Inquiry	Finance	General Ledger Inquiry		
AM5M4Y	06	General Ledger Inquiry	Finance	General Ledger Inquiry		
AM5M50	09	General Ledger Inquiry	Finance	General Ledger Inquiry		
AM5M61	09	Work With Personal Account Status	Finance	Personal Account Statuses		
AM5M63	01	Work With Entities	Finance	Entities		
AM5M63	02	Work With Personal Accounts	Finance	Personal Accounts		
AM5M63	03	Work With Entity Groups	Finance	Entity Groups		
AM5M63	05	Work With Regions	Finance	Regions		



Menu	Option	Option Description	Application	Business Object	Primary Object	Comment
AM5M63	06	Work With Countries	CBO	Countries		
AM5M63	07	Work With States	CBO	States		
AM5M64	02	Work With Date Methods	CBO	Date Methods		
AM5M64	04	Work With Collection Status	Finance	Collection Statuses		
AM5M64	06	Work With Reasons For Dispute	Finance	Reasons For Dispute		
AM5M64	08	Work With Personal Account Status	Finance	Personal Account Statuses		
AM5M66	02	Work With Entities for Banks	Finance	Entities		
AM5M69	01	Work With Tax Codes	CBO	Tax Code For Authorities		
AM5M69	04	Work With Countries	CBO	Countries		
AM5M69	05	Work With States	CBO	States		
AM5M69	06	Work With Tax Suffix Codes	CBO	Tax Suffixes		
AM5M69	07	Work With Tax Indicator Codes	CBO	Tax Indicators		
AM5M70	03	General Ledger Inquiry	Finance	General Ledger Inquiry		
AM5M70	09	P.O. Related Invoices and Credits	Finance	Financial Transactions		
AM5M92	02	Work With Entities for Banks	Finance	Entities		
AM5M95	01	Work With Countries	CBO	Countries		
AM5M95	02	Work With States	CBO	States		
AM5M95	06	Work With Reasons For	Finance	Reasons For Dispute		

Menu	Option	Option Description	Application	Business Object	Primary Object	Comment
		Dispute				
AM5M95	08	Work With Date Methods	CBO	Date Methods		
AM5M95	11	Work With Collection Status	Finance	Collection Statuses		
AM5M95	16	Work With Personal Account Status	Finance	Personal Account Statuses		
AM5M95	19	Work With Entity Groups	Finance	Entity Groups		
AM5M95	20	Work With Entities	Finance	Entities		
AM5MA0	07	General Ledger Summary Inquiry	Finance	General Ledger Inquiry		
AM6M10	01	Enter/Edit Quotations/Contracts	PM	Contracts		
AM6M10	01	Enter/Edit Quotations/Contracts	PM	Quotes		
AM6M10	02	Print Quotations Requests	PM	Quotes		
AM6M10	03	Enter/Edit Requisitions	PM	Requisitions		
AM6M10	04	Enter/Edit Purchase Orders	PM	Purchase Orders		See Appendix A for additional IDF Level 1 tasks for this menu and option.
AM6M10	04	Enter/Edit Purchase Orders	PM	Purchase Order Items		See Appendix A for additional IDF Level 1 tasks for this menu and option.
AM6M10	04	Enter/Edit Purchase Orders	PM	Purchase Order Item Releases		See Appendix A for additional IDF Level 1 tasks for this menu and option.
AM6M10	05	Enter/Edit Purchase Order Operations	PM	Purchase Order Item Receiving Operations		

Menu	Option	Option Description	Application	Business Object	Primary Object	Comment
AM6M10	05	Enter/Edit Purchase Order Operations	PM	Purchase Order Item Release Receiving Operations		
AM6M10	06	Print Purchase Orders	PM	Purchase Orders		
AM6M10	09	Purchase Order Closeout Selection	PM	Purchase Orders		
AM6M10	10	Purchase Order Closeout Report and Purge	PM	Purchase Orders		
AM6M10	11	Print Transaction Register	MM	Inventory Transaction History		See Appendix A for additional IDF Level 1 tasks for this menu and option.
AM6M30	01	Purchase Orders	PM	Purchase Orders		See Appendix A for additional IDF Level 1 tasks for this menu and option.
AM6M30	01	Purchase Orders	PM	Purchase Order Items		See Appendix A for additional IDF Level 1 tasks for this menu and option.
AM6M30	01	Purchase Orders	PM	Purchase Order Item Releases		See Appendix A for additional IDF Level 1 tasks for this menu and option.
AM6M30	02	Display Item Detail	CBO	Bill of Lading Commodities		
AM6M30	02	Display Item Detail	CBO	Items		
AM6M30	02	Display Item Detail	EPDM	Enterprise Items		
AM6M30	02	Display Item Detail	EPDM	Item Release		
AM6M30	02	Display Item Detail	EPDM	Item Revisions		
AM6M30	03	Requisition Master	PM	Requisitions		
AM6M30	04	Vendor Master	PM	Vendors		See Appendix A for additional IDF

Menu	Option	Option Description	Application	Business Object	Primary Object	Comment
						Level 1 tasks for this menu and option.
AM6M30	04	Vendor Master	Finance	Entities		See Appendix A for additional IDF Level 1 tasks for this menu and option.
AM6M30	05	Vendor Performance	PM	Purchase Order Performance		
AM6M30	05	Vendor Performance	PM	Vendors		
AM6M30	06	Buyer Performance	PM	Buyers		
AM6M30	07	Invoices and Credit Memos	AM+	Vendor Invoices		
AM6M30	08	Vendor/Item Master	PM	Vendors/Items		
AM6M30	09	Quotation/Contract Masters	PM	Contracts		
AM6M30	09	Quotation/Contract Masters	PM	Quotes		
AM6M40	01	Quotation/Contract Analysis	PM	Contracts		
AM6M40	01	Quotation/Contract Analysis	PM	Quotes		
AM6M40	04	Open Purchase Orders	PM	Purchase Orders		
AM6M40	04	Open Purchase Orders	PM	Purchase Order Items		
AM6M40	04	Open Purchase Orders	PM	Purchase Order Item Releases		
AM6M40	06	Purchase Price Variance	PM	Purchase Orders		
AM6M40	07	Purchase Order Closeout Audit	PM	Purchase Orders		See Appendix A for additional IDF Level 1 tasks for this menu and option.
AM6M50	01	Inquire into Purchase Order History	PM	Purchase Order History		
AM6M50	01	Inquire into Purchase Order History	PM	Purchase Order History Items		

Menu	Option	Option Description	Application	Business Object	Primary Object	Comment
AM6M50	01	Inquire into Purchase Order History	PM	Purchase Order History Item Releases		
AM6M60	01	Item Master	CBO	Items		
AM6M60	01	Item Master	CBO	Item Warehouses		
AM6M60	01	Item Master	PM	Vendors/Items		
AM6M60	02	Vendor Master	PM	Vendors		See Appendix A for additional IDF Level 1 tasks for this menu and option.
AM6M60	02	Vendor Master	Finance	Entities		See Appendix A for additional IDF Level 1 tasks for this menu and option.
AM6M60	03	Vendor/Item Master	PM	Vendors/Items		
AM6M60	04	Warehouse Ship-to Master	PM	Warehouse Addresses		
AM6M60	05	Buyer Master	PM	Buyers		
AM6M60	06	Standard Message Master	PM	Purchase Orders		
AM6M60	06	Standard Message Master	PM	Purchase Order Item Debit Memos		
AM6M60	06	Standard Message Master	PM	Purchase Order Items		
AM6M60	06	Standard Message Master	PM	Purchase Order Item Releases		
AM6M60	06	Standard Message Master	PM	Quotes		
AM6M60	06	Standard Message Master	PM	Requisitions		
AM6M60	06	Standard Message Master	PM	Vendors/Items		
AM6M60	07	Ship Via Master	PM	Ship Vias		
AM6M60	08	Terms Master	CBO	Settlement Terms		
AM6M60	08	Terms Master	PM	Terms		

Menu	Option	Option Description	Application	Business Object	Primary Object	Comment
AM6M60	09	Free on Board Master	PM	FOBs		
AM6M60	10	Landed Cost Master	PM	Landed Costs		
AM6M60	11	General Ledger Master	AM+	General Ledger Accounts		See Appendix A for additional IDF Level 1 tasks for this menu and option.
AM6M60	13	Control File Options	ENV	Application Settings		
AM6M60	15	Work With Shipping Profiles	PM	Shipping Profiles		
AM6M60	16	Vendor Contact Master	PM	Vendors		
AM6M60	16	Vendor Contact Master	PM	Vendor Contacts		
AM6M6C	01	Bill of Lading Commodity	CBO	Bill of Lading Commodities		
AM6M6C	02	Country	CBO	Countries		
AM6M6C	03	Item Class	CBO	Item Classes		
AM6M6C	04	Item Price Class	CBO	Item Price Classes		
AM6M6C	05	Item Sales Family	CBO	Item Sales Families		
AM6M6C	06	Item Sales Group	CBO	Item Sales Groups		
AM6M6C	07	Purchased Item Commodity	CBO	Purchased Item Commodities		
AM6M6C	08	Transaction Unit of Measure Class	EPDM	Unit of Measure Classes		
AM6M6C	09	Unit of Measure Master	CBO	Units of Measure		
AM6M70	01	Item Master	CBO	Items		
AM6M70	01	Item Master	EPDM	Enterprise Items		
AM6M70	01	Item Master	EPDM	Item Revisions		
AM6M70	01	Item Master	EPDM	Item Revision Base Prices		

Menu	Option	Option Description	Application	Business Object	Primary Object	Comment
AM6M70	02	Vendor Master	PM	Vendors		
AM6M70	02	Vendor Master	PM	Vendor Contacts		
AM6M70	03	Vendor/Item Master	PM	Vendors/Items		
AM6M70	04	Warehouse Ship-to Master	PM	Warehouse Addresses		
AM6M70	05	Buyer Master	PM	Buyers		
AM6M70	06	Standard Message Master	PM	Purchase Orders		
AM6M70	06	Standard Message Master	PM	Purchase Order Item Debit Memos		
AM6M70	06	Standard Message Master	PM	Purchase Order Items		
AM6M70	06	Standard Message Master	PM	Purchase Order Item Releases		
AM6M70	06	Standard Message Master	PM	Quotes		
AM6M70	06	Standard Message Master	PM	Requisitions		
AM6M70	06	Standard Message Master	PM	Vendors/Items		
AM6M70	07	Ship Via Master	PM	Ship Vias		
AM6M70	08	Terms Master	CBO	Settlement Terms		
AM6M70	08	Terms Master	PM	Terms		
AM6M70	09	Free on Board Master	PM	FOBs		
AM6M70	10	Landed Cost Master	PM	Landed Costs		
AM6M70	11	General Ledger Chart of Accounts - All Accounts	AM+	General Ledger Accounts		
AM6M70	12	General Ledger Chart of Accounts - Within Limits	AM+	General Ledger Accounts		See Appendix A for additional IDF Level 1 tasks for this menu and option.
AM6M80	01	Print Temporary General	AM+	General Ledger		See Appendix A for additional IDF

Menu	Option	Option Description	Application	Business Object	Primary Object	Comment
		Ledger Listing		Activity		Level 1 tasks for this menu and option.
AM6M80	02	Print Temporary GL Listing and Clear Transactions	AM+	General Ledger Activity		See Appendix A for additional IDF Level 1 tasks for this menu and option.
AM6M90	01	Work with Items	PM	Purchase Order History		
AM6M90	01	Work with Items	PM	Purchase Order History Items		
AM6M90	01	Work with Items	CBO	Items		
AM6M90	01	Work with Items	CBO	Item Warehouses		
AM6M90	01	Work with Items	EPDM	Enterprise Items		
AM6M90	01	Work with Items	EPDM	Item Revisions		
AM6M90	01	Work with Items	MM	Discrete Allocations		
AM6M90	01	Work with Items	MM	Item Locations		
AM6M90	01	Work with Items	PM	Purchase Orders		
AM6M90	01	Work with Items	PM	Purchase Order Items		
AM6M90	01	Work with Items	PM	Purchase Order Item Releases		
AM6M90	01	Work with Items	PM	Requisitions		
AM6M90	01	Work with Items	PM	Vendors/Items		
AM6M90	02	Work with Buyers	PM	Buyers		
AM6M90	03	Work with Purchase Orders	PM	Purchase Orders		
AM6M90	03	Work with Purchase Orders	PM	Purchasing Activity		
AMAM60	02	Print Vendor Master Yr-End Listing & Update Stats	PM	Vendors		



Menu	Option	Option Description	Application	Business Object	Primary Object	Comment
AMAM70	04	Update Landed Cost Master	PM	Landed Costs		
AMAM70	06	Update Terms Master	PM	Terms		
AMAM70	07	Update Vendor Contact Master	PM	Vendor Contacts		
AMAM80	01	General Ledger Chart of Accounts - All Accounts	AM+	General Ledger Accounts		
AMAM80	04	Vendor Master - All Vendors	PM	Vendors		
AMAM90	01	Vendor Open Invoices	AM+	Vendor Invoices		
AMAM90	02	Aged Open Payables	AM+	Vendor Invoice Payments		
AMAM90	03	Vendor Master	AM+	Vendor Invoices		
AMAM90	04	Invoice Payment History	AM+	Vendor Invoice History		
AMAM90	05	Bank Account Balance	AM+	Bank Accounts		
AMBM10	01	Enter Orders and Quotes	CSM	Customer Orders and Quotes		
AMBM10	01	Enter Orders and Quotes	CSM	Credit Memos		
AMBM10	01	Enter Orders and Quotes	CSM	Customer Orders		
AMBM10	01	Enter Orders and Quotes	CSM	Customer Quotes		
AMBM10	01	Enter Orders and Quotes	CSM	Standing Orders		
AMBM10	05	Print Quotes	CSM	Customer Orders and Quotes		
AMBM10	05	Print Quotes	CSM	Customer Quotes		
AMBM10	06	Print Acknowledgements	CSM	Customer Orders and Quotes		
AMBM10	06	Print Acknowledgements	CSM	Credit Memos		
AMBM10	06	Print Acknowledgements	CSM	Customer Orders		

Menu	Option	Option Description	Application	Business Object	Primary Object	Comment
AMBM10	06	Print Acknowledgements	CSM	Customer Quotes		
AMBM10	06	Print Acknowledgements	CSM	Standing Orders		
AMBM10	09	Review/Maintain Held Orders	CSM	Customer Orders and Quotes		
AMBM10	09	Review/Maintain Held Orders	CSM	Credit Memos		
AMBM10	09	Review/Maintain Held Orders	CSM	Customer Orders		
AMBM10	09	Review/Maintain Held Orders	CSM	Customer Quotes		
AMBM10	09	Review/Maintain Held Orders	CSM	Standing Orders		
AMBM10	10	Review/Maintain Quotes	CSM	Customer Orders and Quotes		
AMBM10	10	Review/Maintain Quotes	CSM	Customer Quotes		
AMBM17	01	Review/Select Orders for Pro Forma Invoicing	CSM	Customer Orders and Quotes		
AMBM17	02	Review/Select Shipments for Invoicing/Pro Forma	CSM	Order Shipments		
AMBM17	02	Review/Select Shipments for Invoicing/Pro Forma	CSM	Shipments		
AMBM17	03	Review/Select Invoices to Reprint	CSM	Customer Invoices		
AMBM17	04	Select Orders for Invoicing	CSM	Customer Orders and Quotes		
AMBM17	05	Review/Select Orders for Amount Invoicing	CSM	Customer Orders and Quotes		
AMBM1B	01	Create Pick List	CSM	Customer Orders and Quotes		

Menu	Option	Option Description	Application	Business Object	Primary Object	Comment
AMBM1B	01	Create Pick List	MM	Pick Lists		
AMBM1B	02	Create Pick List for Stock Pick	CSM	Customer Orders and Quotes		
AMBM1B	02	Create Pick List for Stock Pick	MM	Pick Lists		
AMBM1B	03	Maintain Pick Lists	MM	Pick Lists		
AMBM1B	08	Create Shipments	CSM	Customer Orders and Quotes		
AMBM1B	08	Create Shipments	MM	Pick Lists		
AMBM1B	10	Print Packing List and Send Advance Ship Notice	CSM	Shipments		
AMBM1B	10	Print Packing List and Send Advance Ship Notice	MM	Pick Lists		
AMBM1B	14	Post-Invoicing Serial Number Assignment	CSM	Shipped Items		
AMBM20	01	Customer	CSM	Customers		
AMBM30	03	Period to Date Backlog/Shipments	CSM	Companies		
AMBM30	04	Quote Status	CSM	Customer Orders and Quotes		
AMBM30	04	Quote Status	CSM	Customer Quotes		
AMBM30	06	Staging Location Return to Stock	MM	Item Locations		
AMBM31	01	Open Orders/Back Orders by Request Date	CSM	Customer Orders and Quotes		
AMBM31	01	Open Orders/Back Orders by Request Date	CSM	Customer Orders		

Menu	Option	Option Description	Application	Business Object	Primary Object	Comment
AMBM31	02	Open Orders/Back Orders by Item	CSM	C.O. Line Items		
AMBM31	02	Open Orders/Back Orders by Item	CSM	C.O. Line Items		
AMBM31	03	Open Orders/Back Orders by Customer	CSM	Customer Orders and Quotes		
AMBM31	03	Open Orders/Back Orders by Customer	CSM	Customer Orders		
AMBM31	04	Blanket Item Status	CSM	C.O. Line Item Releases		
AMBM31	04	Blanket Item Status	CSM	C.O. Line Item Releases		
AMBM40	01	Commissions Worksheet	CSM	Commission History		
AMBM40	08	Item Master	CBO	Items		
AMBM40	08	Item Master	EPDM	Enterprise Items		
AMBM40	08	Item Master	EPDM	Item Revisions		
AMBM40	08	Item Master	EPDM	Item Revision Base Prices		
AMBM40	10	Salesrep Master List	CSM	Sales Representatives		
AMBM60	01	Customer	CSM	Customers		
AMBM60	11	Salesreps	CSM	Sales Representatives		
AMBM62	01	Item Master	CBO	Items		
AMBM62	01	Item Master	EPDM	Enterprise Items		
AMBM62	01	Item Master	EPDM	Item Revisions		
AMBM62	01	Item Master	EPDM	Item Revision Base Prices		

Menu	Option	Option Description	Application	Business Object	Primary Object	Comment
AMBM62	01	Item Master	EPDM	Item Revision Foreign Language Descriptions		
AMBM62	04	Customer Item Number Cross-Reference	CSM	Customer Items		
AMBM63	01	Item Base Prices	EPDM	Item Revision Base Prices		
AMBM63	03	Customer Price Codes	CSM	Customer Price Codes		
AMBM63	04	Contracts	CSM	Customer Contracts		
AMBM63	05	Promotions	CSM	Promotions		
AMBM63	11	Fixed Trade Discounts	CSM	Fixed Trade Discounts		
AMBM65	03	Surcharges	CSM	Surcharges		
AMBM66	01	Unit of Measure Master	CBO	Units of Measure		
AMBM66	02	Item Unit of Measure Conversion	CSM	Item UM Conversions		
AMBM66	03	Class Unit of Measure Conversion	CSM	Class UM Conversions		
AMBM66	04	Global Unit of Measure Conversion	CSM	Global UM Conversions		
AMBM67	01	Address Type	CSM	Address Types		
AMBM67	02	Bill of Lading Commodity	CBO	Bill of Lading Commodities		
AMBM67	04	Carrier	CBO	Carriers		
AMBM67	05	Container	CBO	Freight Containers		
AMBM67	06	Container Type	CBO	Container Types		
AMBM67	07	Country	CBO	Countries		
AMBM67	08	Credit Rating	CSM	Credit Ratings		

Menu	Option	Option Description	Application	Business Object	Primary Object	Comment
AMBM67	09	Credit/Debit Reason	CSM	Credit Debit Reasons		
AMBM67	10	Customer Class	CSM	Customer Classes		
AMBM67	11	Customer Price Codes	CSM	Customer Price Codes		
AMBM67	12	Enterprise	CSM	Customer Enterprises		
AMBM67	13	Item Class	CBO	Item Classes		
AMBM67	14	Item Industry Class	CSM	Item Industry Classes		
AMBM67	15	Item Price Class	CBO	Item Price Classes		
AMBM67	16	Item Sales Family	CBO	Item Sales Families		
AMBM67	17	Item Sales Group	CBO	Item Sales Groups		
AMBM67	18	Language	CBO	Languages		
AMBM67	20	Market Analysis Code	CBO	Market Analyses		
AMBM67	21	Priority	CSM	Priorities		
AMBM67	22	Sales Region	CBO	Sales Regions		
AMBM67	23	Sales Transport Terms	MM	Sales Transport Terms		
AMBM67	24	Shipping Location	MM	Shipping Locations		
AMBM67	25	State	CBO	States		
AMBM67	26	Surcharge Line	CSM	Surcharge Lines		
AMBM67	27	Territory	CSM	Territories		
AMBM67	28	Transaction Unit of Measure Class	EPDM	Unit of Measure Classes		
AMBM67	29	Unit of Measure Master	CBO	Units of Measure		

Menu	Option	Option Description	Application	Business Object	Primary Object	Comment
AMBM67	30	Volume Qualifier	CSM	Volume Qualifiers		
AMBM67	31	Weight Qualifier	CSM	Weight Qualifiers		
AMBM67	32	Zone	CSM	Zones		
AMBM6D	01	Maintain Tax Codes	CBO	Tax Code For Authorities		
AMBM6D	03	Maintain Tax Suffix Codes	CBO	Tax Suffixes		
AMBM6D	04	Maintain Tax Indicator Codes	CBO	Tax Indicators		
AMBM6D	07	Work With Countries	CBO	Countries		
AMBM6D	08	Work With States	CBO	States		
AMBM6E	01	Offline Item Base Price	EPDM	Item Revision Base Prices		
AMBM6E	02	Offline Price Book	CSM	Price Books		
AMBM6E	03	Offline Contract/Promotion	CSM	Customer Contracts		
AMBM6E	03	Offline Contract/Promotion	CSM	Promotions		
AMBM73	06	List Chart of Accounts	AM+	General Ledger Accounts		
AMBM81	02	Maintain Invoice Form Number Cross-Reference	CSM	Renumber Invoice Form Numbers		
AMBM81	03	Maintain Packing List Form Numbers	CSM	Packing List Form Numbers		
AMBM82	02	Maintain Warehouse Extension	MM	Warehouses		
AMBM82	03	Maintain Customer Extension	CSM	Customers		
AMBM82	05	Maintain Tax Categories	CSM	Tax Categories		
AMBM82	06	Maintain Sales Branches	CSM	Sales Branches		

Menu	Option	Option Description	Application	Business Object	Primary Object	Comment
AMBM82	07	Maintain Invoice Locations	CSM	Invoice Locations		
AMBM82	08	Maintain Invoice Location Assignment	CSM	Invoice Location Assignments		
AMBM82	09	Maintain Invoice Form Numbers	CSM	Invoice Form Numbers		
AMBM82	10	Maintain Shipping Locations	CSM	Invoice Shipping Locations		
AMCM00	08	Work List Generation	OBPM	Manufacturing Orders		See Appendix A for additional IDF Level 1 tasks for this menu and option.
AMCM10	01	Production Facility Status	OBPM	M.O. Operations		
AMCM10	02	Order Status - Production	OBPM	Manufacturing Orders		
AMCM10	02	Order Status - Production	OBPM	M.O. Components		
AMCM10	02	Order Status - Production	OBPM	M.O. Miscellaneous Charges		
AMCM10	02	Order Status - Production	OBPM	M.O. Operations		
AMCM10	03	Order Status - Accounting	OBPM	Manufacturing Orders		
AMCM10	03	Order Status - Accounting	OBPM	M.O. Components		
AMCM10	03	Order Status - Accounting	OBPM	M.O. Miscellaneous Charges		
AMCM10	03	Order Status - Accounting	OBPM	M.O. Operations		
AMCM10	04	Production Facility	EPDM	Facilities		
AMCM60	01	Order Selection	OBPM	M.O. History Operation Description		
AMCM60	01	Order Selection	OBPM	Manufacturing Orders		
AMCM60	02	Reporting and Purge	OBPM	Manufacturing Order History		
AMCM60	02	Reporting and Purge	OBPM	M.O. History Components		
AMCM60	02	Reporting and Purge	OBPM	M.O. History Miscellaneous Charges		



Menu	Option	Option Description	Application	Business Object	Primary Object	Comment
AMCM60	02	Reporting and Purge	OBPM	Manufacturing Orders		
AMCM60	02	Reporting and Purge	OBPM	M.O. Components		
AMCM60	02	Reporting and Purge	OBPM	M.O. Miscellaneous Charges		
AMCM60	02	Reporting and Purge	OBPM	M.O. Operations		
AMCM60	02	Reporting and Purge	OBPM	M.O. Operation Description		
AMCM70	01	Mfg Order Master	OBPM	Manufacturing Orders		
AMCM70	02	Mfg Order Operations Detail	OBPM	M.O. Operations		
AMCM70	03	Mfg Order Miscellaneous Detail	OBPM	M.O. Miscellaneous Charges		
AMCM70	04	Mfg Order Detail	OBPM	M.O. Components		
AMCM70	05	Production Facility	EPDM	Facilities		
AMCM70	07	Reschedule All Orders	OBPM	Manufacturing Orders		
AMCM70	07	Reschedule All Orders	OBPM	M.O. Operations		
AMCM70	08	Reason Code	CBO	Transaction Reasons		
AMCM93	06	List Chart of Accounts	AM+	General Ledger Accounts		
AMDM10	01	Product Costing-Current	EPDM	Item Revisions		
AMDM10	01	Product Costing-Current	EPDM	Sites		
AMDM10	02	Product Costing-Standard	EPDM	Item Revisions		
AMDM10	02	Product Costing-Standard	EPDM	Sites		
AMDM10	03	Product Costing-Both	EPDM	Item Revisions		
AMDM10	03	Product Costing-Both	EPDM	Sites		
AMDM10	04	Simulate Product Cost-Current	EPDM	Costing Simulations		

Menu	Option	Option Description	Application	Business Object	Primary Object	Comment
AMDM10	04	Simulate Product Cost-Current	EPDM	Item Revisions		
AMDM10	05	Simulate Product Cost-Standard	EPDM	Costing Simulations		
AMDM10	05	Simulate Product Cost-Standard	EPDM	Item Revisions		
AMDM10	06	Simulate Product Cost-Both	EPDM	Costing Simulations		
AMDM10	06	Simulate Product Cost-Both	EPDM	Item Revisions		
AMDM10	07	Change L/O Costing Table	EPDM	Sites		
AMDM10	08	Change L/O Simulation Costing Table	EPDM	Costing Simulations		
AMDM10	09	Change P/O Costing Table	EPDM	Sites		
AMDM10	10	Change P/O Simulation Costing Table	EPDM	Costing Simulations		
AMDM10	11	Roll Current to Standard Costs	EPDM	Sites		
AMDM20	10	EPDM Control File	ENV	Application Settings		
AMDM60	01	Product Structure Retrievals	EPDM	Item Revisions		
AMDM60	02	Single Level Costed	EPDM	Item Revisions		
AMDM60	03	Routing	EPDM	Routings		
AMEM02	01	Display Item Detail	CBO	Bill of Lading Commodities		
AMEM02	01	Display Item Detail	CBO	Items		
AMEM02	01	Display Item Detail	CBO	Purchased Item Commodities		
AMEM02	01	Display Item Detail	EPDM	Enterprise Items		
AMEM02	01	Display Item Detail	EPDM	Item Processes		

Menu	Option	Option Description	Application	Business Object	Primary Object	Comment
AMEM02	01	Display Item Detail	EPDM	Item Release		
AMEM02	01	Display Item Detail	EPDM	Item Revisions		
AMEM02	04	Routing	EPDM	Routings		
AMEM02	04	Routing	EPDM	Routing Operations		
AMEM02	05	Production Facility	EPDM	Facilities		
AMEM03	01	Item Master Selections	CBO	Items		
AMEM03	02	Production Facility Report - by Facility	EPDM	Facilities		
AMEM03	03	Production Facility Report - by Department	EPDM	Facilities		
AMEM05	01	Item Master	CBO	Items		
AMEM05	02	Product Structure	EPDM	Bills of Material		
AMEM05	02	Product Structure	EPDM	Bill of Material Components		
AMEM05	03	Production Facility	EPDM	Facilities		
AMEM05	04	Routing	EPDM	Routings		
AMEM05	04	Routing	EPDM	Routing Operations		
AMEM55	01	Item Master	CBO	Items		
AMEM55	02	Product Structure	EPDM	Bills of Material		
AMEM55	02	Product Structure	EPDM	Bill of Material Components		
AMEM55	03	Production Facility	EPDM	Facilities		
AMEM55	04	Routing	EPDM	Routings		
AMEM55	04	Routing	EPDM	Routing Operations		
AMEM59	01	Bill of Lading Commodity	CBO	Bill of Lading Commodities		

Menu	Option	Option Description	Application	Business Object	Primary Object	Comment
AMEM59	02	Country	PCC	Country Codes		
AMEM59	03	Item Class	CBO	Item Classes		
AMEM59	04	Item Price Class	CBO	Item Price Classes		
AMEM59	05	Item Sales Family	CBO	Item Sales Families		
AMEM59	06	Item Sales Group	CBO	Item Sales Groups		
AMEM59	07	Language	CBO	Languages		
AMEM59	08	Transaction Unit of Measure Class	EPDM	Unit of Measure Classes		
AMEM59	09	Unit of Measure Master	CBO	Units of Measure		
AMGM50	09	Period End Date Table	AM+	General Ledger History		See Appendix A for additional IDF Level 1 tasks for this menu and option.
AMGM60	01	Inquire into Journal History	AM+	General Ledger History		
AMGM70	01	General Ledger	AM+	General Ledger Accounts		
AMIM10	01	Display Item Detail	CBO	Bill of Lading Commodities		
AMIM10	01	Display Item Detail	CBO	Items		
AMIM10	01	Display Item Detail	CBO	Purchased Item Commodities		
AMIM10	01	Display Item Detail	EPDM	Enterprise Items		
AMIM10	01	Display Item Detail	EPDM	Item Processes		
AMIM10	01	Display Item Detail	EPDM	Item Release		
AMIM10	01	Display Item Detail	EPDM	Item Revisions		
AMIM10	02	Item Balance Detail - All Warehouses	CBO	Items		

Menu	Option	Option Description	Application	Business Object	Primary Object	Comment
AMIM10	02	Item Balance Detail - All Warehouses	CBO	Item Warehouses		
AMIM10	02	Item Balance Detail - All Warehouses	EPDM	Enterprise Items		
AMIM10	02	Item Balance Detail - All Warehouses	EPDM	Item Revisions		
AMIM10	03	Item Balance Detail - Mfg Allocations	CBO	Items		
AMIM10	03	Item Balance Detail - Mfg Allocations	CBO	Item Warehouses		
AMIM10	03	Item Balance Detail - Mfg Allocations	EPDM	Enterprise Items		
AMIM10	03	Item Balance Detail - Mfg Allocations	EPDM	Item Revisions		
AMIM10	03	Item Balance Detail - Mfg Allocations	OBPM	Manufacturing Orders		
AMIM10	04	Open Orders - By Item/Warehouse	OBPM	Manufacturing Orders		
AMIM10	04	Open Orders - By Item/Warehouse	PM	Purchase Order Items		
AMIM10	05	Item Availability	CSM	C.O. Line Items		See Appendix A for additional IDF Level 1 tasks for this menu and option.
AMIM10	05	Item Availability	CSM	C.O. Line Item Releases		See Appendix A for additional IDF Level 1 tasks for this menu and option.

Menu	Option	Option Description	Application	Business Object	Primary Object	Comment
AMIM10	05	Item Availability	OBPM	Manufacturing Orders		See Appendix A for additional IDF Level 1 tasks for this menu and option.
AMIM10	05	Item Availability	PM	Purchase Order Items		See Appendix A for additional IDF Level 1 tasks for this menu and option.
AMIM10	05	Item Availability	PM	Purchase Order Item Releases		See Appendix A for additional IDF Level 1 tasks for this menu and option.
AMIM10	06	Item Balance History - Sales	CBO	Items		
AMIM10	06	Item Balance History - Sales	CBO	Item Warehouses		
AMIM10	06	Item Balance History - Sales	EPDM	Enterprise Items		
AMIM10	06	Item Balance History - Sales	EPDM	Item Revisions		
AMIM10	07	Purchase Orders - By Order	PM	Purchase Orders		
AMIM10	07	Purchase Orders - By Order	PM	Purchase Order Items		
AMIM10	08	Location Detail - By Item/Warehouse	MM	Item Locations		
AMIM10	09	Warehouse Summary - By Item	MM	Item Locations		See Appendix A for additional IDF Level 1 tasks for this menu and option.
AMIM10	10	Item Detail - By Location	EPDM	Facilities		
AMIM10	10	Item Detail - By Location	MM	Item Locations		
AMIM10	10	Item Detail - By Location	MM	Warehouse Locations		
AMIM10	10	Item Detail - By Location	RBPM	Item Line Components		
AMIM10	11	Discrete Allocations	MM	Discrete Allocations		

Menu	Option	Option Description	Application	Business Object	Primary Object	Comment
AMIM21	01	Stock Status - Inventory	CBO	Item Warehouses		
AMIM21	02	Stock Status - Location	MM	Item Locations		
AMIM21	03	Purchase Order Status	PM	Purchase Order Items		
AMIM22	01	Reorder Report	CBO	Item Warehouses		
AMIM22	02	Control Totals	CBO	Item Warehouses		
AMIM22	04	Item QC & Batch/Lot Controls	EPDM	Item Revisions		
AMIM22	06	Reject Items Waiting Disposition	MM	Item Locations		
AMIM22	09	Inventory Valuation	CBO	Item Warehouses		See Appendix A for additional IDF Level 1 tasks for this menu and option.
AMIM23	01	Item Master List	CBO	Items		
AMIM23	01	Item Master List	EPDM	Enterprise Items		
AMIM23	01	Item Master List	EPDM	Item Revisions		
AMIM23	02	Item Balance List	CBO	Item Warehouses		
AMIM23	04	Empty Locations	MM	Warehouse Locations		
AMIM23	05	Locations and Contents	MM	Item Locations		
AMIM23	05	Locations and Contents	MM	Warehouse Locations		
AMIM23	06	Contents of Quality Control Areas	MM	Item Locations		
AMIM23	06	Contents of Quality Control Areas	MM	Warehouse Locations		
AMIM23	07	Contents of Bulk Store Areas	MM	Item Locations		

Menu	Option	Option Description	Application	Business Object	Primary Object	Comment
AMIM23	07	Contents of Bulk Store Areas	MM	Warehouse Locations		
AMIM23	08	Miscellaneous Item Stock	CBO	Item Warehouses		
AMIM23	08	Miscellaneous Item Stock	MM	Item Locations		
AMIM30	01	Entry	MM	Issue Item (IS)	Inventory Transaction History	See Appendix A for additional IDF Level 1 tasks for this menu and option.
AMIM30	01	Entry	MM	Receive Item (RC)	Inventory Transaction History	See Appendix A for additional IDF Level 1 tasks for this menu and option.
AMIM30	01	Entry	MM	Issue Sales Item (SA)	Inventory Transaction History	See Appendix A for additional IDF Level 1 tasks for this menu and option.
AMIM30	01	Entry	MM	Transfer Item (TW)	Inventory Transaction History	See Appendix A for additional IDF Level 1 tasks for this menu and option.
AMIM30	01	Entry	MM	Inventory Count Groups		See Appendix A for additional IDF Level 1 tasks for this menu and option.
AMIM30	01	Entry	MM	Vendor Accept	Purchase Orders	See Appendix A for additional IDF Level 1 tasks for this menu and option.
AMIM30	01	Entry	MM	Vendor Accept	Purchase Order Items	See Appendix A for additional IDF Level 1 tasks for this menu and option.
AMIM30	01	Entry	MM	Receive Purchase Order Item	Purchase Order Items	See Appendix A for additional IDF Level 1 tasks for this menu and option.



Menu	Option	Option Description	Application	Business Object	Primary Object	Comment
AMIM30	01	Entry	MM	Vendor Accept	Purchase Order Item Releases	See Appendix A for additional IDF Level 1 tasks for this menu and option.
AMIM30	01	Entry	MM	Receive Purchase Order Item Release	Purchase Order Item Releases	See Appendix A for additional IDF Level 1 tasks for this menu and option.
AMIM30	01	Entry	MM	Receive Scheduled Receipt - Transferred Item (RT)	Scheduled Receipts	See Appendix A for additional IDF Level 1 tasks for this menu and option.
AMIM30	01	Entry	MM	Receive Scheduled Receipt	Scheduled Receipts	See Appendix A for additional IDF Level 1 tasks for this menu and option.
AMIM30	01	Entry	OBPM	Production Receipts		See Appendix A for additional IDF Level 1 tasks for this menu and option.
AMIM30	01	Entry	PM	Purchase Orders		See Appendix A for additional IDF Level 1 tasks for this menu and option.
AMIM50	01	Total Physical Selection	MM	Item Locations		
AMIM50	01	Total Physical Selection	MM	Warehouses		
AMIM50	01	Total Physical Selection	MM	Warehouse Locations		
AMIM50	02	Cycle Count Selection	MM	Item Locations		
AMIM50	02	Cycle Count Selection	MM	Warehouses		
AMIM50	02	Cycle Count Selection	MM	Warehouse Locations		
AMIM50	03	Entry	MM	Item Locations		
AMIM50	03	Entry	MM	Warehouses		
AMIM50	03	Entry	MM	Warehouse Locations		

Menu	Option	Option Description	Application	Business Object	Primary Object	Comment
AMIM50	04	Entry from Offline Files	MM	Item Locations		
AMIM50	04	Entry from Offline Files	MM	Warehouses		
AMIM50	04	Entry from Offline Files	MM	Warehouse Locations		
AMIM50	05	Variance Report	MM	Item Locations		
AMIM50	05	Variance Report	MM	Warehouses		
AMIM50	05	Variance Report	MM	Warehouse Locations		
AMIM70	01	Item Master	CBO	Items		
AMIM70	01	Item Master	CBO	Item Warehouses		
AMIM70	01	Item Master	EPDM	Enterprise Items		
AMIM70	01	Item Master	EPDM	Item Revisions		
AMIM70	01	Item Master	PM	Vendors/Items		
AMIM70	02	Item Balance	CBO	Item Warehouses		
AMIM70	03	Purchase Order Item Detail	PM	Purchase Order Items		
AMIM70	04	Purchase Order Blanket Release Detail	PM	Purchase Order Item Releases		
AMIM70	05	Mfg Order Master	OBPM	Manufacturing Orders		
AMIM70	06	Mfg Order Detail	OBPM	M.O. Components		
AMIM70	10	On-Order Quantity Audit	CBO	Item Warehouses		
AMIM70	11	Allocation Quantity Audit	CBO	Item Warehouses		
AMIM70	16	Reason Code	CBO	Transaction Reasons		
AMIM79	01	Batch/Lot Quality Control Status	MM	Item Locations		
AMIM79	02	Batch/Lot Numbers	MM	Item Locations		

Menu	Option	Option Description	Application	Business Object	Primary Object	Comment
AMIM79	03	Location Detail	MM	Item Locations		
AMIM79	03	Location Detail	MM	Warehouse Locations		
AMIM79	04	Quality Control Areas	MM	Item Locations		
AMIM79	04	Quality Control Areas	MM	Warehouse Locations		
AMIM79	05	Bulk Store Areas	MM	Item Locations		
AMIM79	05	Bulk Store Areas	MM	Warehouse Locations		
AMIM79	06	Location Quantity Audit	CBO	Item Warehouses		
AMIM79	06	Location Quantity Audit	MM	Warehouses		
AMIM7D	01	Bill of Lading Commodity	CBO	Bill of Lading Commodities		
AMIM7D	02	Country	CBO	Countries		
AMIM7D	03	Item Class	CBO	Item Classes		
AMIM7D	04	Item Price Class	CBO	Item Price Classes		
AMIM7D	05	Item Sales Family	CBO	Item Sales Families		
AMIM7D	06	Item Sales Group	CBO	Item Sales Groups		
AMIM7D	07	Purchased Item Commodity	CBO	Purchased Item Commodities		
AMIM7D	08	Transaction Unit of Measure Class	EPDM	Unit of Measure Classes		
AMIM7D	09	Unit of Measure Master	CBO	Units of Measure		
AMIM7E	01	Item Master	CBO	Items		
AMIM7E	01	Item Master	CBO	Item Warehouses		
AMIM7E	01	Item Master	EPDM	Enterprise Items		
AMIM7E	01	Item Master	EPDM	Item Revisions		
AMIM7E	01	Item Master	PM	Vendors/Items		

Menu	Option	Option Description	Application	Business Object	Primary Object	Comment
AMIM7E	02	Item Balance	CBO	Item Warehouses		
AMIM80	01	Transaction History Inquiries	MM	Inventory Transaction History		
AMIM90	01	Items	PM	Purchase Order History Items		
AMIM90	01	Items	CBO	Items		
AMIM90	01	Items	CBO	Item Warehouses		
AMIM90	01	Items	EPDM	Enterprise Items		
AMIM90	01	Items	EPDM	Item Revisions		
AMIM90	01	Items	EPDM	Item Revision Base Prices		
AMIM90	01	Items	EPDM	Item Revision Foreign Language Descriptions		
AMIM90	01	Items	PM	Purchase Order Items		
AMIM90	01	Items	PM	Requisitions		
AMIM90	01	Items	PM	Vendors/Items		
AMIM90	02	Item Warehouses	CBO	Item Warehouses		
AMIM90	02	Item Warehouses	MM	Discrete Allocations		
AMIM90	02	Item Warehouses	MM	Item Locations		
AMIM90	03	Item Locations	MM	Discrete Allocations		
AMIM90	03	Item Locations	MM	Item Locations		
AMIM90	04	Discrete Allocations - By Item	MM	Discrete Allocations		
AMIM90	05	Discrete Allocations - By Item/Location	MM	Discrete Allocations		
AMIM90	06	Warehouses	MM	Discrete Allocations		

Menu	Option	Option Description	Application	Business Object	Primary Object	Comment
AMIM90	06	Warehouses	MM	Item Locations		
AMIM90	06	Warehouses	MM	Warehouses		
AMIM90	06	Warehouses	MM	Warehouse Locations		
AMIM90	07	Warehouse Locations	MM	Discrete Allocations		
AMIM90	07	Warehouse Locations	MM	Item Locations		
AMIM90	07	Warehouse Locations	MM	Warehouse Locations		
AMIM90	08	Warehouse Items	CBO	Item Warehouses		
AMIM90	08	Warehouse Items	MM	Discrete Allocations		
AMIM90	08	Warehouse Items	MM	Item Locations		
AMIM90	09	Location Items	MM	Discrete Allocations		
AMIM90	09	Location Items	MM	Item Locations		
AMIMB3	06	List Chart of Accounts	AM+	General Ledger Accounts		
AMJM10	02	Production Facility Status	OBPM	M.O. Operations		
AMJM10	03	Production Facility	EPDM	Facilities		
AMJM10	04	Production Order Status	OBPM	Manufacturing Orders		
AMJM10	04	Production Order Status	OBPM	M.O. Components		
AMJM10	04	Production Order Status	OBPM	M.O. Miscellaneous Charges		
AMJM10	04	Production Order Status	OBPM	M.O. Operations		
AMJM20	01	Work List Generation	OBPM	Manufacturing Orders		
AMJM20	02	Shop Packets - Multiple Orders	OBPM	Manufacturing Orders		
AMJM20	02	Shop Packets - Multiple Orders	OBPM	M.O. Components		
AMJM20	02	Shop Packets - Multiple	OBPM	M.O. Operations		

Menu	Option	Option Description	Application	Business Object	Primary Object	Comment
		Orders				
AMJM20	02	Shop Packets - Multiple Orders	OBPM	M.O. Operation Description		
AMJM20	03	Shop Packets - Individual Orders	OBPM	Manufacturing Orders		
AMJM20	03	Shop Packets - Individual Orders	OBPM	M.O. Components		
AMJM20	03	Shop Packets - Individual Orders	OBPM	M.O. Operations		
AMJM20	03	Shop Packets - Individual Orders	OBPM	M.O. Operation Description		
AMJM20	04	Order Status Reports	OBPM	Manufacturing Orders		
AMJM20	04	Order Status Reports	OBPM	M.O. Components		
AMJM20	04	Order Status Reports	OBPM	M.O. Miscellaneous Charges		
AMJM20	04	Order Status Reports	OBPM	M.O. Operations		
AMJM50	01	Mfg Order Master	OBPM	Manufacturing Orders		
AMJM50	02	Mfg Order Operation Detail	OBPM	M.O. Operations		
AMJM50	03	Mfg Order Miscellaneous Detail	OBPM	M.O. Miscellaneous Charges		
AMJM50	04	Mfg Order Detail	OBPM	M.O. Components		
AMJM50	05	Production Facility	EPDM	Facilities		
AMJM50	09	Reason Code	CBO	Transaction Reasons		
AMMM40	01	Review/Approve Master Level Items	OBPM	MRP Recommendations		
AMMM40	02	Review/Approve All Items	OBPM	MRP Recommendations		

Menu	Option	Option Description	Application	Business Object	Primary Object	Comment
AMMM40	03	Check Item Availability Prior to Release	OBPM	MRP Recommendations		
AMMM40	05	Release Orders	OBPM	MRP Recommendations		
AMMM40	06	Release Orders with Shop Packet	OBPM	MRP Recommendations		
AMMM40	09	Source of Demand	OBPM	MRP Recommendations		
AMPM11	06	General Ledger Chart of Accounts	AM+	General Ledger Accounts		
AMQM10	01	Item Balance	CBO	Item Warehouses		
AMQM10	02	Schedule Performance	RBPM	Schedules		
AMQM10	04	Released Schedules	RBPM	Schedules		
AMQM10	06	Production Facility	EPDM	Facilities		
AMQM10	07	Item Detail by Location	MM	Item Locations		
AMQM10	08	Transaction History	MM	Inventory Transaction History		
AMQM10	10	Work With Component Status	RBPM	Component Line Replenishments		See Appendix A for additional IDF Level 1 tasks for this menu and option.
AMQM20	01	Item Balance	CBO	Item Warehouses		
AMQM50	01	Item Balance	CBO	Item Warehouses		
AMQM50	04	Production Facility	EPDM	Facilities		
AMQM50	05	Batch/Lot Quality Control Status	MM	Item Locations		
AMQM50	06	Batch/Lot Numbers	MM	Item Locations		
AMQM50	07	Location Detail	MM	Item Locations		

Menu	Option	Option Description	Application	Business Object	Primary Object	Comment
AMQM50	07	Location Detail	MM	Warehouse Locations		
AMQM50	12	Reason Code	CBO	Transaction Reasons		
AMQM58	01	Bill of Lading Commodity	CBO	Bill of Lading Commodities		
AMQM58	02	Country	CBO	Countries		
AMQM58	03	Item Class	CBO	Item Classes		
AMQM58	04	Item Price Class	CBO	Item Price Classes		
AMQM58	05	Item Sales Family	CBO	Item Sales Families		
AMQM58	06	Item Sales Group	CBO	Item Sales Groups		
AMQM58	07	Purchased Item Commodity	CBO	Purchased Item Commodities		
AMQM58	08	Transaction Unit of Measure Class	EPDM	Unit of Measure Classes		
AMQM58	09	Unit of Measure Master	CBO	Units of Measure		
AMQM63	06	List Chart of Accounts	AM+	General Ledger Accounts		
AMQM70	01	Schedules	RBPM	Schedules		
AMQM70	02	Date Schedules	RBPM	Schedules		
AMQM70	03	Item Schedules	RBPM	Schedules		
AMQM70	04	Line Schedules	RBPM	Schedules		
AMQM70	05	Planner Schedules	RBPM	Schedules		
AMQM70	06	Schedule Operations	RBPM	Schedule Operations		
AMQM70	07	Schedule Materials	RBPM	Schedule Components		
AMQM70	08	Schedule Allocations	RBPM	Schedule Components		



Menu	Option	Option Description	Application	Business Object	Primary Object	Comment
AMQM70	09	Schedule Descriptions	RBPM	Schedules		
AMQM70	12	Component Status	RBPM	Component Line Replenishments		See Appendix A for additional IDF Level 1 tasks for this menu and option.
AMRM00	03	Statements	AM+	Statements		
AMRM00	04	Delinquency Notices	AM+	Statements		
AMRM00	06	Customer Inquiry	CSM	Customers		
AMRM10	01	Receipts/Adjustments Entry	AM+	Cash Receipts		
AMRM20	01	Customer Master Maintenance	CSM	Customers		
AMRM20	18	Reset Statements for Reprint	AM+	Statements		
AMRM22	01	Country	CBO	States		
AMRM22	02	Credit Rating	CSM	Credit Ratings		
AMRM22	03	Customer Class	CSM	Customer Classes		
AMRM22	04	Customer Price Codes	CSM	Customer Price Codes		
AMRM22	05	Enterprise	CSM	Customer Enterprises		
AMRM22	06	Item Industry Class	CSM	Item Industry Classes		
AMRM22	07	Language	CBO	Languages		
AMRM22	08	Market Analysis Code	CBO	Market Analyses		
AMRM22	09	Priority	CSM	Priorities		
AMRM22	10	Sales Region	CBO	Sales Regions		
AMRM22	11	Sales Transport Terms	MM	Sales Transport Terms		

Menu	Option	Option Description	Application	Business Object	Primary Object	Comment
AMRM22	12	Shipping Location	MM	Shipping Locations		
AMRM22	13	State	CBO	States		
AMRM22	14	Territory	CSM	Territories		
AMRM22	15	Zone	CSM	Zones		
AMTM10	04	Production Facility Maintenance	CBO	Production Facilities		
AMTM10	05	Production Facility Inquiry	CBO	Production Facilities		
AMTM20	03	Production Facility	CBO	Production Facilities		
AMTM20	04	Routing	EPDM	Routings		
AMTM20	05	Order Status - Production	OBPM	Manufacturing Orders		
AMZMB0	11	Maintain Tax Codes	CBO	Tax Code For Authorities		
AMZMB0	12	Maintain Tax Suffix Codes	CBO	Tax Suffixes		
AMZMB0	13	Maintain Tax Indicator Codes	CBO	Tax Indicators		
AMZMBA	02	Country Code	CBO	Countries		
AMZMBA	03	State Code	CBO	States		
AMZMBA	04	Tax Commodity Code	CBO	EU Tax Commodities		
AMZMBA	05	Nature of Transaction Code	CBO	EU Transaction Types		
AMZMBA	06	Mode of Transport Code	CBO	EU Transport Modes		
AMZMBA	07	Delivery Terms Code	CBO	EU Delivery Terms		
AMZMBA	08	Port of Entry Code	CBO	EU Ports of Entry		