



Infor XA R11 Translation Guide

Important Notices

The material contained in this publication (including any supplementary information) constitutes and contains confidential and proprietary information of Infor.

By gaining access to the attached, you acknowledge and agree that the material (including any modification, translation or adaptation of the material) and all copyright, trade secrets and all other right, title and interest therein, are the sole property of Infor and that you shall not gain right, title or interest in the material (including any modification, translation or adaptation of the material) by virtue of your review thereof other than the non-exclusive right to use the material solely in connection with and the furtherance of your license and use of software made available to your company from Infor pursuant to a separate agreement, the terms of which separate agreement shall govern your use of this material and all supplemental related materials ("Purpose").

In addition, by accessing the enclosed material, you acknowledge and agree that you are required to maintain such material in strict confidence and that your use of such material is limited to the Purpose described above. Although Infor has taken due care to ensure that the material included in this publication is accurate and complete, Infor cannot warrant that the information contained in this publication is complete, does not contain typographical or other errors, or will meet your specific requirements. As such, Infor does not assume and hereby disclaims all liability, consequential or otherwise, for any loss or damage to any person or entity which is caused by or relates to errors or omissions in this publication (including any supplementary information), whether such errors or omissions result from negligence, accident or any other cause.

Without limitation, U.S. export control laws and other applicable export and import laws govern your use of this material and you will neither export or re-export, directly or indirectly, this material nor any related materials or supplemental information in violation of such laws or use such materials for any purpose prohibited by such laws.

Trademark Acknowledgements

The word and design marks set forth herein are trademarks and/or registered trademarks of Infor and/or related affiliates and subsidiaries. All rights reserved. All other company, product, trade or service names referenced may be registered trademarks or trademarks of their respective owners.

Publication Information

Release: Infor XA Release 11

Publication date: July 16, 2025

Contents

Detailed server translation instructions	5
Overview of XA R11 translations	5
Language availability	5
US/English Service Packs and Initial Install	6
Updating a previously translated environment	Error! Bookmark not defined.
Translation methods	6
Enhanced multi-language environments (Recommended)	6
Multilanguage environment restrictions	6
Multilanguage environment untranslated files	9
Single language environments	9
Instructions	9
Step 1. Load and Run Translation	10
Step 2. Multilanguage: Additional selections	11
Step 3. Single-language: Load Translation application libraries	13
Step 4. Single-language: Apply translation application libraries after suspension/retailoring	14
Step 5. Single-language: Select an environment to translate	15
Step 6. Single-language: Select applications	16
Step 7. Single-language: Delete the translate libraries	17
Single language: deactivating/reactivating auto-TRNAPPLY	17
Defining a user's preferred language	18
Translated client enablement	18
Power-Link & Net-Link	19
Installation Instructions	19
Infor XA R11 Server translation issues	20
All languages	20
Infor XA R11 Translation Fixes (SH95001)	20
Language-specific information	20
Czech	20

Dutch	20
French	20
French MNCS	21
German.....	21
German MNCS	21
Italian	21
Japanese	21
Polish.....	21
Portuguese	21
Simplified Chinese.....	21
Spanish.....	21
Swedish	22
Turkish.....	22
Using downloaded media.....	22
ISO images	22
Handling virtual media	22
Step 1: Create the virtual device and catalog	23
Step 2: Copy the virtual image to the image catalog directory	23
Step 3: Add the virtual image to the image catalog	23
Step 4: Load the virtual image.....	24

Detailed server translation instructions

Overview of XA R11 translations

This section explains how to translate an Infor XA Release 11 PTF 00192 US/English environment. This document will be updated periodically with the latest information; ensure you have the latest version before proceeding.

Infor XA R11 server translations provide for the conversion of the character-based interface and client interface elements from US/English to another language. Full translations are provided for Release 11, and do not require any earlier Release 10 translations.

Language availability

As of 18 June 2025, Infor XA R11 translation availability is as noted below. Translations will be available for download from the Download Center as they are completed. These products provide full translation at Release 11; no previous translations are required to install them.

Language	Language ID	PTF Number	Availability
Czech	CSK	SH16305	Not planned
French	FRA	SH16304	Yet to Plan
French MNCS	FRS	SH16306	Yet to Plan
German	DEU	SH16307	Yet to Plan
German MNCS	DES	SH16308	Yet to Plan
Italian	ITA	SH16309	Yet to Plan
Japanese	JPN	SH16310	Yet to Plan
Polish	POL	SH16311	Not planned
Portuguese	PTB	SH16312	Not planned
Simplified Chinese	CHS	SH16313	Yet to Plan
Spanish	ESP	SH16314	Yet to Plan
Swedish	SVE	SH16315	Not planned

Language	Language ID	PTF Number	Availability
Turkish	TRK	SH16316	Not planned

US/English Service Packs and Initial Install

Translations should be installed after the appropriate Release 11 Initial Install or Service Pack.

Package	Description
SH16298	R11 Install for Infor XA SBCS PTF 00192
SH16299	R11 Install for Infor XA DBCS PTF 00192

Translation methods

Two translation methods are supported: a multi-language setup that provides for using multiple languages in conjunction with a US/English environment and a single language replacement of US/English environment elements with translated counterparts.

Enhanced multi-language environments (Recommended)

We recommend implementing translations through the enhanced multi-language method. The enhanced multi-language method is required for use with IDF Level 1.

Beginning with Infor XA Release 7.8, an enhanced approach to multiple languages has been fully integrated into the environment. The multi-language environment “overlay” method creates libraries for each language with translated display files, printer files, panel groups and message files, and populates translation dictionaries natively integrated into the Infor XA database. Once a language is installed, its use within the US/English environment is determined on a per user basis, determined by the language value defined in Work with XA User Profiles. Upon entering Infor XA, the library list is automatically adjusted to use the specified language’s overlay library, and translated text is dynamically accessed from the database in place of the base US/English text.

Multilanguage environment restrictions

While the enhanced multi-language approach relieves most limitations of the earlier implementation, a few database files remain in the language’s overlay library.

File	Comment
HKTSKD	Housekeeping Task Definition
IGGAM	EGL Available Macros
IGGBE	EGL Business Event Process
IGGEO	EGL Event Origin Cross-Reference
IGGLT	EGL Macro Line Type
IGGSU	EGL Subsystem Origin X-Reference
IGIAT	EGL Attribute Descriptions
IGIOB	EGL Object Names
IGZSR	EGL Reason Code Subsystem Relationships
IGZZR	EGL Reason codes
ISOCID	ISO Currencies
ISOCTY	ISO Countries
ISOUOM	ISO Units of Measure
MBVLLSP	No user-modifiable data; used too extensively to implement dynamic retrieval.
MIGTRL	Migration Translations
NLSTXT	No user-modifiable data; used too extensively to implement to dynamic retrieval.
OPP06	CRM Event Type
OPP09	CRM Activity Type
OPP12	CRM Source Activity
OPP2C	CRM Incident Type
OPP22	CRM Op Department
OPP27	CRM Response Type
OPP28	CRM Response Sub-type
OPP3C	CRM Incident Status
OPP47	CRM Role
OPP48	CRM State
OPP52	CRM Account Class
OPP54	CRM Suffix
OPP56	CRM Status Reason
OPP59	CRM Period Type

File	Comment
OPP63	CRM Employee Numbers
OPP64	CRM Turnover Code
OPP80	CRM Country Code
OPP81	CRM Marketing Region
OPP82	CRM Marketing Business Types
OPP83	CRM Marketing Vertical Market
OPP84	CRM Introduction Source
OPP85	CRM Title
OPP89	CRM Organization Unit Type
OPP90	CRM Job Title
OPP91	CRM Profession
OPP97	CRM Mailing Category
PLORECC	No translated fields; placed in overlay library to preserve database relations with PLORXWF.
PLORECD	No translated fields; placed in overlay library to preserve database relations with PLORXWF.
PLOREHA	User modifiable (through help text creation or association); this file is changed when adding help or help associations. See PLOREHT.
PLOREHT	User modifiable (MUI help text); to maintain consistency between languages, modifications must be done for all language environments.
PLORERM	No user-modifiable data.
PLORETH	No user-modifiable data.
PLORETW	No user-modifiable data.
PLOREUF	No translated fields; placed in the overlay library to preserve database relations with PLORXWF.
PLORXWD	User-modifiable (through window definition creation or association); this file is changed when adding prompts or prompts associations. See PLORXWF.
PLORXWF	User-modifiable (MUI field prompt); to maintain consistency between languages, modifications must be done for all language environments.
WSAPPO	Workspace Application Export Overrides
YAVLLSP	No user-modifiable data; used too extensively to implement dynamic retrieval.

Multilanguage environment untranslated files

For some files with limited impact, dynamic retrieval could not be implemented. For enhanced multi-language environments, these remain untranslated in the database file library (AMFLIBy).

File	Comment
GRPTMP	Not translated for multi-language environments; used only in FCST.
PLCPRF	Not translated for multi-language environments; used only in FCST.

Single language environments

The single language environment method provides for applying a translation for selected applications or for the entirety of installed applications. The environment can be either US/English, or one previously translated to the same language. For those applications selected, US/English elements within the environment are replaced with translated counterparts.

Instructions

Note: Corrections to Infor XA R11 PTF 00192 translations will be provided through XA R11 PTF 00192 Translation Fixes PTF (SH95001), if there are any corrections required. Check to see if this PTF is available and if so, download and restore this PTF before installing a translation to ensure the most recent corrections are utilized.

This topic contains instructions for installing Infor XA R11 PTF 00192 translations. This topic has seven steps:

- [Step 1. Load and Run Translation](#)
- [Step 2. Multilanguage: Additional selections](#)
- [Step 3. Single-language: Load Translation application libraries](#)
- [Step 4. Single-language: Apply translation application libraries after suspension/retailoring](#)
- [Step 5. Single-language: Select an environment to translate](#)
- [Step 6. Single-language: Select applications](#)
- [Step 7. Single-language: Delete the translate libraries](#)

When installing a translation, ensure that:

- You are signed on as AMAPICS.
- No one is in the environment to be translated, and no job queue jobs are running for that environment.
- No one is signed on to any environments sharing an application program library (AMALIBx) with the environment receiving translations, and no job queue jobs are running for these shared library environments.

Note: If the environment designator's first character for two or more environments are the same, the environments share the program library.

- You have recent backup copies of program libraries and master files for all environments that are being translated. Use option 1 and 3 on the Cross Application Support Back Up/Recover/Reorganize menu (AMZM40). Refer to "Chapter 13" of the *Cross Application Support User's Guide* for more information on backing up the environments.

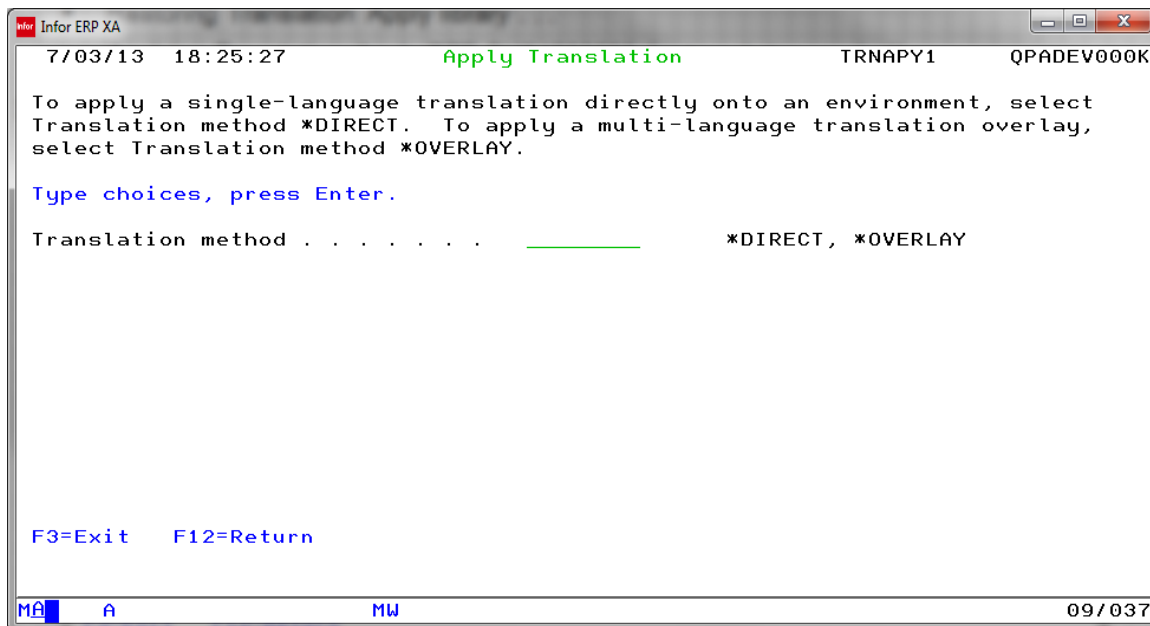
For translation of a single language environment, if the translation application libraries have been previously loaded and retained, begin with [Step 3](#) to apply the translations; otherwise, begin with [Step 1](#) to load and run a translation. In these steps, the French translation is used as an example.

Step 1. Load and Run Translation

- 1 With the media loaded (using device OPTVRT01 as an example; see "Using downloaded media" on page 22 for more information on using ISO images), initiate the translation.

LODRUN DEV(OPTVRT01)

- Apply Translation status (TRNAPY0) is displayed with the following sequence of messages:
 - Restoring Translation library . . .
 - Applying Translation fixes PTF SH950016B0 for translation library . . .
- Apply Translation method selection (TRNAPY1) is displayed:



Translation Method

To apply the translation to a US/English environment as one of possibly multiple alternate languages, configurable on a user-by-user basis, select ***OVERLAY** and press **Enter**. To apply

the translation to a US/English environment as a single language replacement of translated elements, select ***DIRECT** and press **Enter**

- 2 Select the Translation method and press **Enter**. For Translation method ***OVERLAY** (multi-language environment), continue with [Step 2](#); for Translation method ***DIRECT** (single-language environment), proceed to [Step 3](#).

Step 2. Multilanguage: Additional selections

- 1 For Translation method ***OVERLAY** (multi-language environment), Apply Translation method selection (TRNAPY1) displays:

Infor ERP XA

7/03/13 18:23:58 Apply Translation TRNAPY1 QPADEV000K

To apply a single-language translation directly onto an environment, select Translation method *DIRECT. To apply a multi-language translation overlay, select Translation method *OVERLAY.

Type choices, press Enter.

Translation method *OVERLAY *DIRECT, *OVERLAY

Environment identifier ____

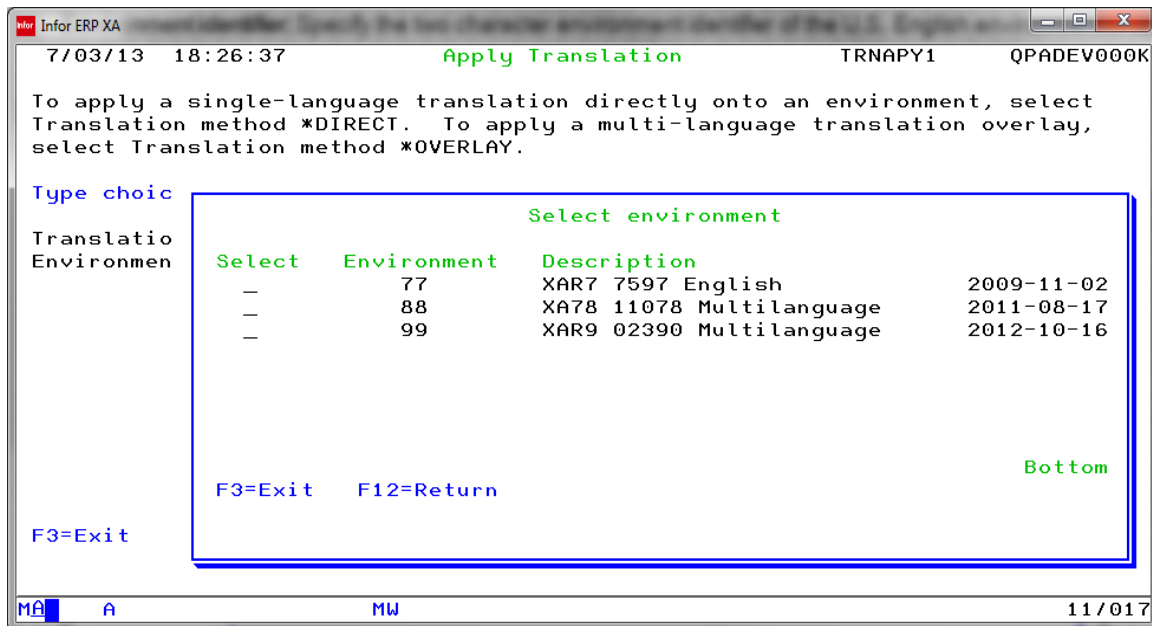
F3=Exit F12=Return

MA A MW 10/037

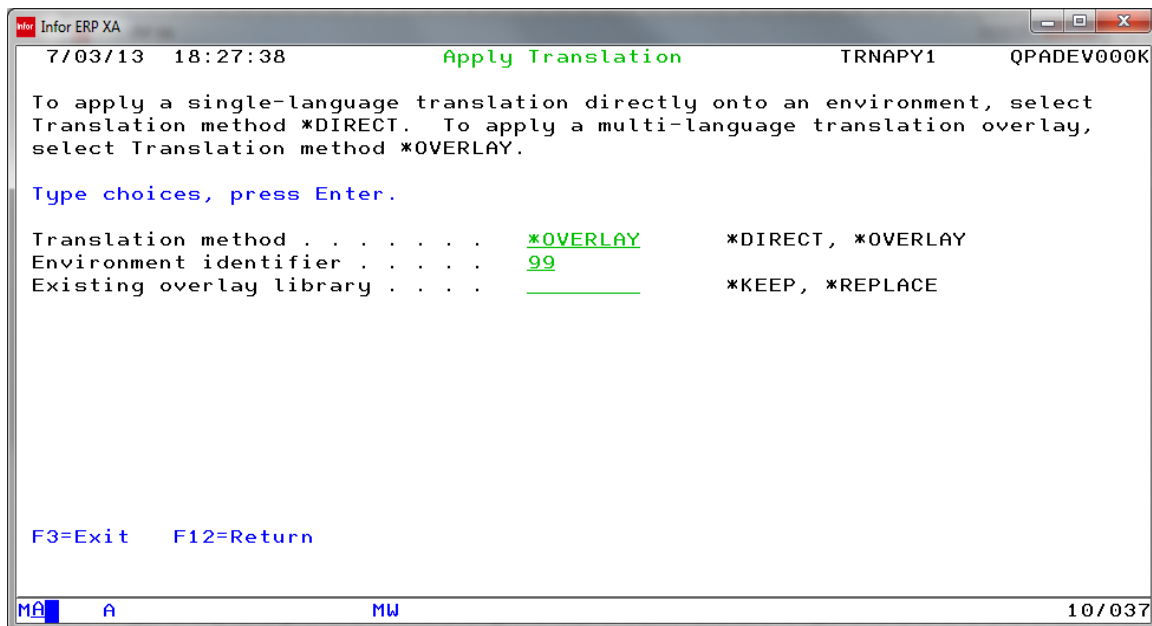
Environment identifier

Specify the two-character environment identifier of the US/English environment to apply the translation to as a multi-language environment.

- 2 Select the **Environment identifier** and **Translated displays** option, and press **Enter**. A prompt window is provided for a blank or invalid entry:



- If the multi-language environment has already had this language applied, the Apply Translation method selection (TRNAPY1) is displayed again:



Existing overlay library

To keep the existing overlay library (while refreshing the translation dictionary files in the Infor XA database), select ***KEEP** and press **Enter**. To delete the language's existing overlay library for the multilanguage environment and reload the overlay library, select ***REPLACE** and press **Enter**. For environments translated at a previous level, always select ***REPLACE**.

- 4 Translation for multi-language environments proceeds; the Apply Translation status (TRNAPY3) is displayed with the following sequence of statuses (using French as an example):

- Restoring French database translation dictionary library DCTB8000F
- Applying Translation fixes PTF SH950016B0 for translation dictionaries
- Applying French database translation dictionaries
- Restoring French overlay library AMOFRAx1
- Restoring French overlay library AMOFRAx2
- Applying Translation fixes PTF SH950016B0 for overlay library
- Deleting Translation library
- Translation for environment xy has completed successfully. Press Enter.

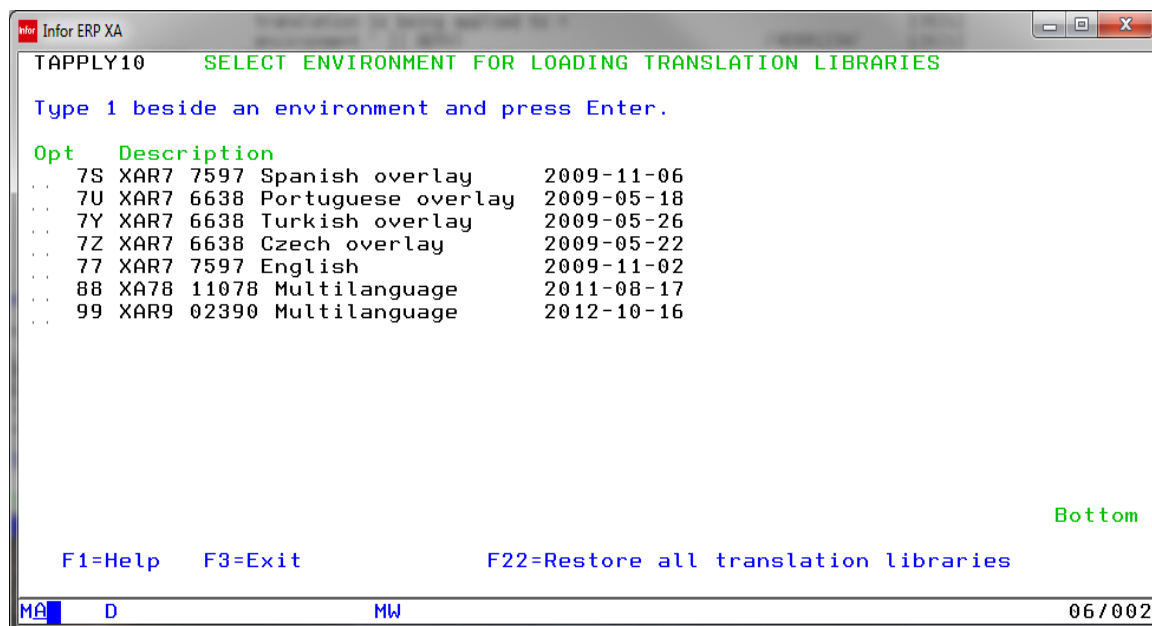
The overlay library messages are not displayed when Existing overlay library ***KEEP** is specified.

- 5 The multi-language environment translation is complete. See “Defining a user’s preferred language” on page 18.

The remaining steps, [Step 3](#) through [Step 7](#), relate only to the single-language translation, translation method ***DIRECT**.

Step 3. Single-language: Load Translation application libraries

- 1 For a single language environment translation, Select Environment for Loading Translation Libraries (TAPPLY10) is displayed.



Opt

To select the environment, type 1 in the **Opt** (option) field.

- 2 Either select the environment for which you want to load the translated application libraries for all installed modules, or load all translated application libraries.
 - Press **Enter** to load translated application libraries for all modules installed in the selected environment.
 - Select **F22** (Restore all translation libraries) to load all translated application libraries, without regard to the modules you have installed in the environment to be translated.
- 3 When the load completes, continue with Step 5.

[Step 4](#) is required only if you chose to suspend the translation after loading.

Step 4. Single-language: Apply translation application libraries after suspension/retailoring

If the translation is suspended by pressing **F3** (exit) on Select Environment for Applying Translation Libraries (TAPPLY2), or if database files require re-translation, use the command TRNAPPLY to resume the translation without restoring the translated application libraries.

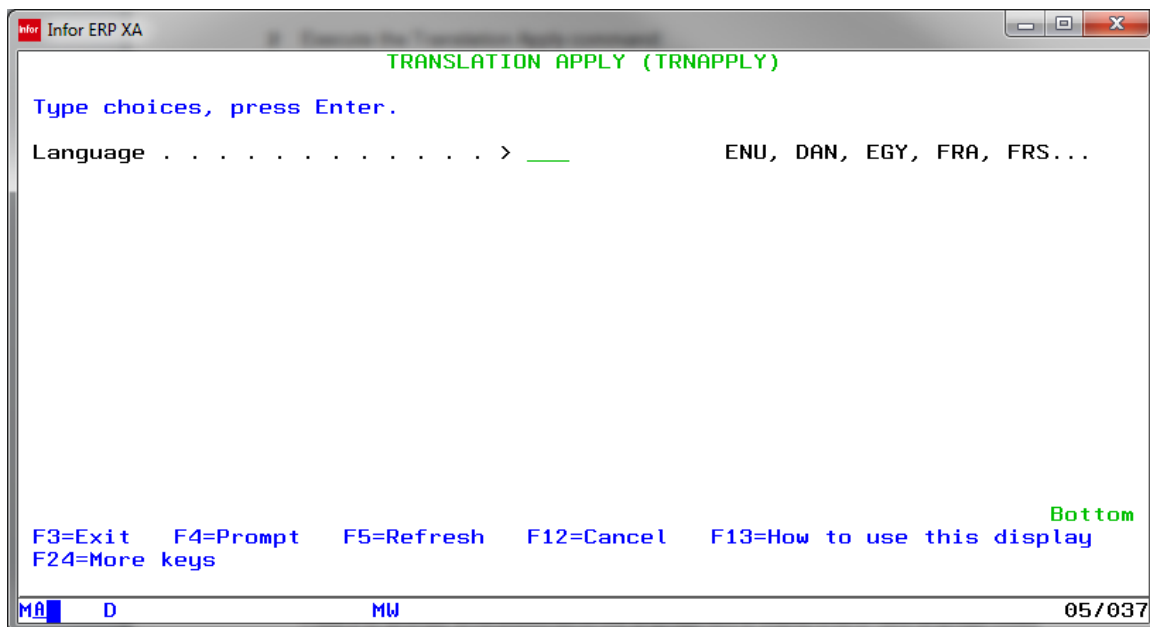
- 1 Add the TRANSLATE library to the library list:

```
ADDLIBLE LIB(TRANSLATE)
```

- 2 Execute the Translation Apply command and press F4.

```
TRNAPPLY
```

The Translation Apply (TRNAPPLY) prompt appears:



Language

Select the three-character language code for the translation you are applying, and press **Enter**. Press **F4** (prompt) while positioned on the language field to display a list of valid language codes.

- 3 When you press **Enter**, continue with [Step 5](#).

Step 5. Single-language: Select an environment to translate

Select Environment for Applying Translations Libraries (TAPPLY2) prompts for the environment to apply translations to. All XA environments identified in QGPL/MMLIST are displayed. Only one environment can be selected at a time.

Infor ERP XA

TAPPLY2 SELECT ENVIRONMENT FOR APPLYING TRANSLATION LIBRARIES

Type 1 beside an environment and press Enter.

Opt	Description	
7S	XAR7 7597 Spanish overlay	2009-11-06
7U	XAR7 6638 Portuguese overlay	2009-05-18
7Y	XAR7 6638 Turkish overlay	2009-05-26
7Z	XAR7 6638 Czech overlay	2009-05-22
77	XAR7 7597 English	2009-11-02
88	XAR7 11078 Multilanguage	2011-08-17
99	XAR9 02390 Multilanguage	2012-10-16

Bottom

F1=Help F3=Exit F22=Delete translation libraries

ATTENTION: BE SURE YOU HAVE A COMPLETE BACKUP OF MAPICS

MA D MW 17/002

Opt

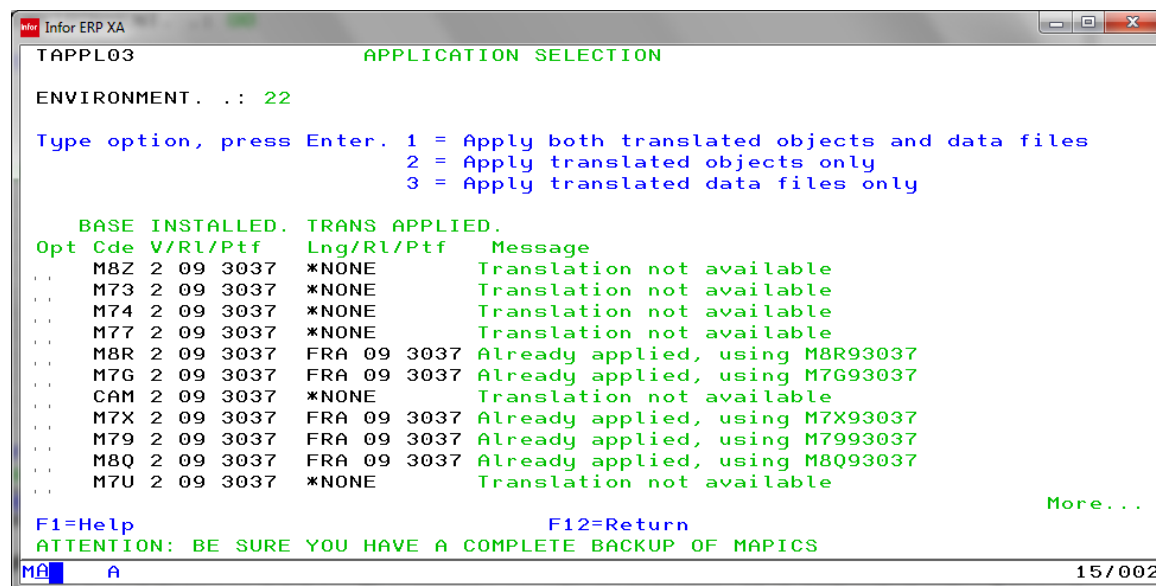
To select the environment, specify 1 in the **Opt** (option) field.

Perform one of these actions:

- Select an option in the **Opt** field and press **Enter**; continue with [Step 6](#).
- Select **F3** (exit) to return to the command line without completing the action. When ready to resume, restart the Translation Apply at [Step 4](#).
- Select **F22** (delete translation libraries) to delete the application translation libraries and the Translation Apply library (TRANSLATE) from the system.

Step 6. Single-language: Select applications

Translation Apply checks that the translated application libraries restored from the media are at the same level as those from the installed XA environment. The translated application library name is composed from the application identifier, release, and PTF level (for example, M7X97323, where 7323 is a placeholder for the actual PTF level 00001). Application Selection (TAPPL03) is displayed with the translation apply eligibility status for all applications installed. For applications that cannot be applied, a message is issued with the reason.



Opt

To apply the translation to an application, select an option for each application. Select option 1 to apply the complete translation upon database files, screens, reports, messages, and help text; select option 2 to apply translation only upon screens, reports, messages, and help text; select option 3 to apply translation only upon database files.

Select one of these actions:

- To complete the translation, specify the option number you want to use in the **Opt** (apply option) field for one or more applications, and press **Enter**; continue with [Step 7](#).

Note: If Auto-TRNAPPLY is turned off (see “Deactivating/Reactivating Auto-TRNAPPLY” on page 17), use option 3 to manually reapply translations to database files after Install/Tailor Applications is run, or any time database files need to be retranslated (for example, when PTF processes merge files from AMXLIBx).

- If any problems exist, press **F12** (return) to return to Select Environment for Applying Translations Libraries (TAPPLY2); go to [Step 5](#).

On TAPPLY2, select **F3** to suspend Translation Apply and get the correct PTFs for the applications that are not eligible for translation. Translated application libraries do not need to be loaded again.

Step 7. Single-language: Delete the translate libraries

When the Translate Apply is complete, use **F12**=Return to return to Select Environment for Applying Translations Libraries (TAPPLY2); go to [Step 5](#).

Note: If you have no other environments to apply a translation to, select **F22** on TAPPLY2 to delete the translate libraries, including the TRANSLATE library, from the system.

The single language environment translation is complete.

Single language: deactivating/reactivating auto-TRNAPPLY

After re-tailoring, TRNAPPLY is run automatically to re-translate the TDFs. However, you might want to deactivate this function for testing purposes. To do this, issue this command:

```
CHGDTAARA DTAARA (AMALIBx/TAAUTO) VALUE ('0')
```

To reactivate this function, issue this command:

```
CHGDTAARA DTAARA (AMALIBx/TAAUTO) VALUE ('1')
```

The automatic re-translation after re-tailoring also creates a spool file TAAUTORP with a log of the re-translation process. After re-tailoring, you should check this report for errors.

Translation for multi-language environments is unaffected by tailoring and does not require additional action.

Defining a user's preferred language

In a multi-language environment, a single US/English environment exists in conjunction with one or more language overlay libraries to allow users to utilize any language applied to the environment. The language selected for each user is controlled by the preferred language value defined in **Work with XA User Profiles**.

AMZUPW01 Work with XA user profiles SELECT

Change User Profile

Type information; press Enter.

User ID	ATRAMMELL
User name	Alan Trammell
Operator ID	AST
Startup menu	AM5M00
Number of group jobs allowed.	0 0-16
User group flag	0 0=User, 1=Group
Preferred language.	ESP

F3=Exit F4=Prompt F10=Actions F11=Job status
F12=Return

MA B 09/039

1902 - Session successfully started

If the current user has a preferred language specified, and that language has been applied to the environment, all translated elements of the environment will be shown in that language. The environment defaults to US/English if the user's preferred language has not been applied to the environment, or if a preferred language has not been specified.

Translated client enablement

This section explains how to translate an Infor XA Release 11 US/English client environment. It will be updated periodically with the latest information; please ensure you have the current version before proceeding.

The Translated Client Enablement for Infor XA allows for the translation of the client-based Infor XA interface. Some aspects of the client translations derive from the server-based translation so you should install and execute the server Translation Apply for the selected language prior to executing this function. Release 11 utilizes electronic disk images for the delivery and installation of translated Client Enablement feature.

Power-Link & Net-Link

Activating Power-Link & Net-Link translations and enabling help: Download these PTFs from the Infor Product Download Center.

Language	PTF Number	Comment
Czech	SH96101.6B0	English help only
Dutch	SH96102.6B0	English help only
French	SH96103.6B0	English help only
German	SH96104.6B0	English help only
Italian	SH96105.6B0	English help only
Japanese	SH96106.3B0	English help only
Polish	SH96107.6B0	English help only
Portuguese	SH96108.6B0	English help only
Simplified Chinese	SH96109.3B0	English help only
Spanish	SH96110.6B0	English help only
Swedish		Not planned
Turkish		Not Planned

Installation Instructions

Prior to installing this feature, ensure that you have installed Release 11 XA Install for SBCS PTF 00192 (SH16298) or R11 Install for Infor XA DBCS PTF 00192 (SH16299) whichever is applicable.

Installing the Translated Client Enablement feature is very simple. Download the CD image, or order a physical CD, from the Infor Product Download Center. Load the CD or image and run the following command:

```
LODRUN DEV(DeviceName)
```

For instructions on utilizing the downloaded CD images using virtual media, see “Using downloaded media” on page 22.

After applying the Client Enablement feature (or if this feature has been previously installed in your environment), please download and install the most recent Client translation updates (SH16291) from the Infor Support Portal.

Infor XA R11 Server translation issues

This section lists, by language, all known problems and possibly, their solution. It is divided into a general section, which lists problems pertinent to all languages, and into multiple language-specific sections. Each entry has the date specified when it was added or updated.

Note: Unless otherwise noted, the mentioned PTFs should be applied after the translation has been installed.

If you have any problems or questions, contact your designated Support Affiliate.

This document is updated as soon as any new problems are identified. It should be downloaded and read regularly.

All languages

Infor XA R11 Translation Fixes (SH95001)

Download and restore SH95001 before installing a translation to receive updates to the installation process and the translation. The translation will not proceed without this restored library in place. Refer to the PTF cover letter for instructions.

Language-specific information

Czech

Translation is currently unavailable.

Dutch

Translation is currently unavailable.

French

Translation is currently unavailable.

French MNCS

Translation is currently unavailable.

German

Translation is currently unavailable.

German MNCS

Translation is currently unavailable.

Italian

Translation is currently unavailable.

Japanese

Translation is currently unavailable.

Polish

Translation is currently unavailable.

Portuguese

Translation is currently unavailable.

Simplified Chinese

Translation is currently unavailable.

Spanish

Translation is currently unavailable.

Swedish

Translation is currently unavailable.

Turkish

Translation is currently unavailable.

Using downloaded media

This section contains instructions for using ISO images on the IBM i.

ISO images

The Infor Product Download Center provides electronic disc images you can use to install or update Infor XA. Using publicly available software, you can burn the images to create install discs, or you can transfer the images to a computer and mount them as a virtual device. For information about how to use disc images, see “Using ISO CD Images” section on the Infor Product Download Center.

You may want to consider using a download utility to reduce download times such as Download Manager (www.freedownloadmanager.org).

Handling virtual media

These four steps demonstrate using an image to load an XA Release 11 translation as virtual media on your IBM i, transfer the media data to a virtual image catalog, and loading the virtual image:

- [Step 1: Create the virtual device and catalog](#)
- [Step 2: Copy the virtual image to the image catalog directory](#)
- [Step 3: Add the virtual image to the image catalog](#)
- [Step 4: Load the virtual image](#)

These steps include command examples that refer to the Infor XA Release 11 PTF 00192 French translation (SH16304).

Step 1: Create the virtual device and catalog

- 1 Create a virtual device description, if one does not already exist.

```
CRTDEVOPT DEVD(OPTVRT01) RSRNAME(*VRT)
```

Note: A virtual device can be recognized by its device type 632B.

- 2 Vary on the device description if necessary.

```
VRRCFG CFGOBJ(OPTVRT01) CFGTYPE(*DEV) STATUS(*ON)
```

- 3 Create an image catalog and an IFS directory to store the images, if they do not already exist.

```
CRTIMGCLG IMGCLG(PCMS) DIR('/PCMimages') CRTDIR(*YES)
```

Note: If you already have an IFS directory where you will be storing the images, but want to create an image catalog using that directory, use CRTDIR(*NO).

Step 2: Copy the virtual image to the image catalog directory

After downloading the .iso image file from the Infor Product Download Center, transfer the .iso image file to the IFS folder where you have the image catalog entries stored. You can use Windows Explorer, iSeries Navigator, or ftp. Rename the iso image to, for example, without the '.iso' extension.

Example: This example assumes that the Infor XA Release 11 French Translation (SH16304.iso) image file has been downloaded on your local C:\ drive, and that you want to transfer it to MYSYSTEMI, image catalogue TRNS, and IFS folder /TRNimages. Using FTP from a local command prompt would look like this:

```
> ftp mysystemi.mydomain.com
:
  (You must log on)
:
> quote site namefmt 1
> bin
> cd /TRNimages
> lcd c:\
> put XA11_ServerTRN_SBCS_FRA_PTF00192_SH16304_Vol1_of_1.iso SH16304
> quit
```

Step 3: Add the virtual image to the image catalog

After copying the .iso image file into the IFS directory, add the file to the image catalog:

```
ADDIMGCLGE IMGCLG(TRNS) FROMFILE('/TRNimages/SH16304')
TOFILE(*FROMFILE)
```

Step 4: Load the virtual image

To use the virtual image, you need to mount it in the catalog and load the catalog in a virtual optical device:

- 1 Work with the image catalog.

```
WRKIMGCLG IMGCLG (TRNS)
```

- 2 Use option 12 (Work with Entries), then use options 6 (Mount) for the SH16304 entry.

Note: Do not use option 4 (Remove) unless you really want to delete the catalog entry and the associated image!

- 3 Load the PCM image into the virtual optical drive.

```
LODIMGCLG IMGCLG (TRNS) DEV (OPTVRT01) OPTION (*LOAD)
```

Alternatively, you can use WRKIMGCLG, specify option 8 (Load), and then enter the virtual optical device name.