



Deploying Thru-Put 7.0(64 bit) Software

Thru-Put Advanced Planning and Scheduling

Copyright © 2021 Infor

Important Notices

The material contained in this publication (including any supplementary information) constitutes and contains confidential and proprietary information of Infor.

By gaining access to the attached, you acknowledge and agree that the material (including any modification, translation or adaptation of the material) and all copyright, trade secrets and all other right, title and interest therein, are the sole property of Infor and that you shall not gain right, title or interest in the material (including any modification, translation or adaptation of the material) by virtue of your review thereof other than the non-exclusive right to use the material solely in connection with and the furtherance of your license and use of software made available to your company from Infor pursuant to a separate agreement, the terms of which separate agreement shall govern your use of this material and all supplemental related materials ("Purpose").

In addition, by accessing the enclosed material, you acknowledge and agree that you are required to maintain such material in strict confidence and that your use of such material is limited to the Purpose described above. Although Infor has taken due care to ensure that the material included in this publication is accurate and complete, Infor cannot warrant that the information contained in this publication is complete, does not contain typographical or other errors, or will meet your specific requirements. As such, Infor does not assume and hereby disclaims all liability, consequential or otherwise, for any loss or damage to any person or entity which is caused by or relates to errors or omissions in this publication (including any supplementary information), whether such errors or omissions result from negligence, accident or any other cause.

Without limitation, U.S. export control laws and other applicable export and import laws govern your use of this material and you will neither export or re-export, directly or indirectly, this material nor any related materials or supplemental information in violation of such laws, or use such materials for any purpose prohibited by such laws.

Trademark Acknowledgements

The word and design marks set forth herein are trademarks and/or registered trademarks of Infor and/or related affiliates and subsidiaries. All rights reserved. All other company, product, trade or service names referenced may be registered trademarks or trademarks of their respective owners.

Publication Information

Release: Thru-Put Advanced Planning and Scheduling Release 10

Publication date: August, 2021

Table of Contents

Style Conventions	1
Intended Readers	1
Overview	2
Prerequisites before Installing Thru-Put	2
Before Installing Thru-Put	3
Important note while installing Thru-Put on Windows 2008/Vista	6
Creating the SQL Server database	9
Creating a New User for Thru-Put	12
Configuring Thru-Put to connect to SQL Server database	16
Setting up SQL Server ODBC connection.....	17
Changing the Configuration to use SQL Server	17
Configuring DCOM	17
Configuring Default settings of DCOM	19
Configuring DCOM settings of TPWeb components	22
Registering Crystal 32 Viewer Dlls	27
Configuring SQL Server to use Crystal 32 Bit version	28
Setting up Thru-Put TPWeb on Windows 2008 R2	29
Configuring IIS to use Crystal 32 Viewer	38
One last thing in setting up TPWeb	40
Setting up IBM Client Access ODBC Driver	41
Setting up a new ODBC data source	41
After setting up the data source	47
Running Download and Scheduling (DbUtil.exe/ Resonance.exe)	48

Style Conventions

The following is the list of conventions used throughout this document:

[] Square brackets are used around text to indicate optional items, except in languages in which brackets are part of the syntax. You should type only the information within the brackets, not the brackets.

Italics Italics are used to specify a variable name or other information the user must provide – for example, a path and file name. We also use them to denote parameters, placeholders, new terms, emphasis, and book titles.

Bold Bolded text is used to indicate commands; text that must be entered exactly as it appears in this document; and buttons, checkboxes, menu commands, tabs, and option buttons that must be clicked.

Intended Readers

- Technology Managers
- Systems Engineers
- Web/Network Administrators

Overview

This document explains the steps involved in deploying Thru-Put 7.0(64 Bit) Advanced Planning and Scheduling software in your environment. Thru-Put installation now supports installing Planning components without installing the Web components. When you uncheck the Web components during installation, IIS prerequisites are not checked. However when you do check “Web Components” option then, it is essential to have IIS pre-installed on the PC. For securing the Thru-Put application, you will have to modify some of the security policy settings of Thru-Put server components using DCOM configuration utility. Although policy settings are identical in all flavors of Windows machines (Windows XP/ Vista/ Windows Server 2008 etc), the location and screen layouts are little bit different in each of those windows environment. This document explains how to prepare Microsoft IIS and DCOM configuration in Windows 2008 Server R2 Operating System.

With this release, please note that reporting engines are different for planning session and for Web deployment. For scheduling, a run time distributable of Crystal 64 Bit is provided and is available on the Infor support website. For TPWeb Reports, Crystal 7.0 Viewer version is no longer provided with Thru-Put installation due to incompatibility. As on May, 2012, TPWeb Reports are tested with Crystal 8.5 and Crystal XI (32 Bit) version only. It is highly recommended to use Crystal XI or above for your reporting needs. Thru-Put 7.0 (64 Bit) is available to work with SQL Server 2008 or above (both 32 bit and 64 bit) version. Microsoft Access 64 Bit drivers are not available and hence Thru-Put 7.0 is not available to work with Microsoft Access.

Prerequisites before Installing Thru-Put

Thru-Put 7.0 requires following five prerequisites:

1. 64 Bit VC redistributables (vcredist_x64.exe)
2. 32 Bit VC redistributables (vcredist_x86.exe)
3. Crystal Run Time Version 13, 64 Bit (CRRuntime_64bit_13_0_1.msi)
4. .NET 4.0 Redistributables (dotNetFx40_Full_x86_x64.exe) – required only if they are not already installed with the system. To check if you require, try running Dbutility from Thru-Put. If you get a crash or a warning message requesting for .NET 4.0version, then install.
5. SQL Server Native Client Driver Version 10.0 (sqlncli_x64.msi) – required only if they are not already installed with the system. To check if you require, try creating a ODBC data source in DbUtil and see if you find SQL Native Client 10.0 driver. If you don't see means you need to install.

- Any version of Crystal among Crystal Reports 8.5 thru Crystal XI R2 versions (You can install this later also. but you need this information to specify which version of Crystal you are going to install)

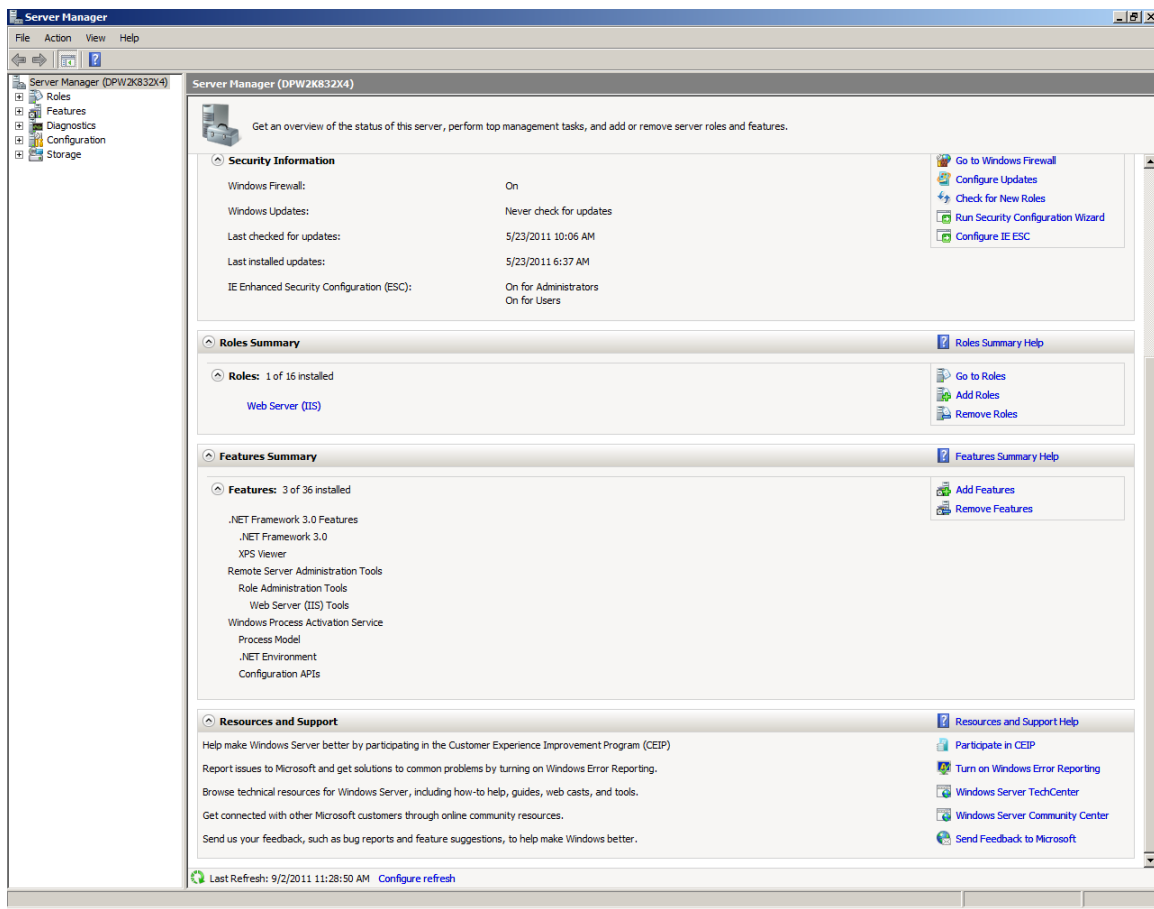
Run all of them in the above sequence before running Thru-Put Installation.

Note: Thru-Put has been tested with IBM Client Access Drivers version VR60 and VR61 64 Bit only. You can install those components by downloading from IBM website. Remaining components are available on ftp.thru-put.com or from Infor support web site.

Before Installing Thru-Put

If you don't plan to use TPWeb (TpWeb Reports & Customer Service Workbench), you can ignore this section.

Thru-Put relies on Microsoft IIS as Web Server and assumes you have installed and turned on IIS feature. If you go to Administrative Tools->Server Manager, your screen should look similar to the one below:

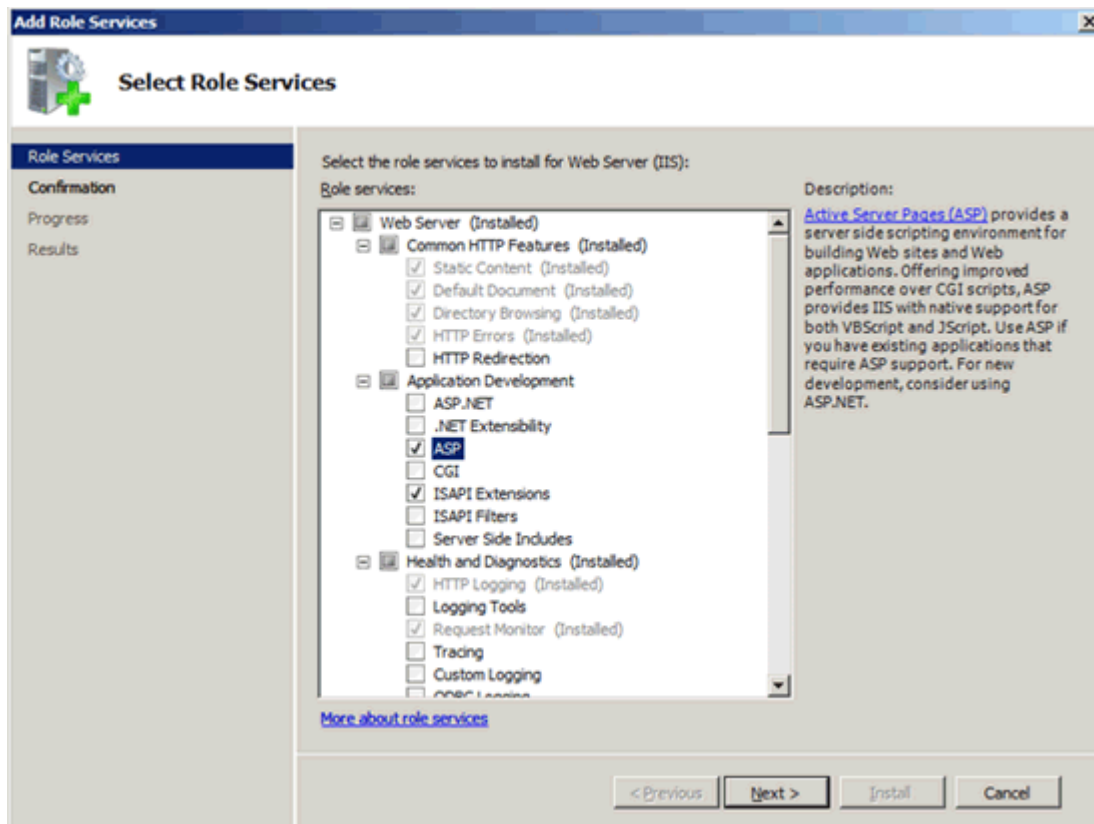


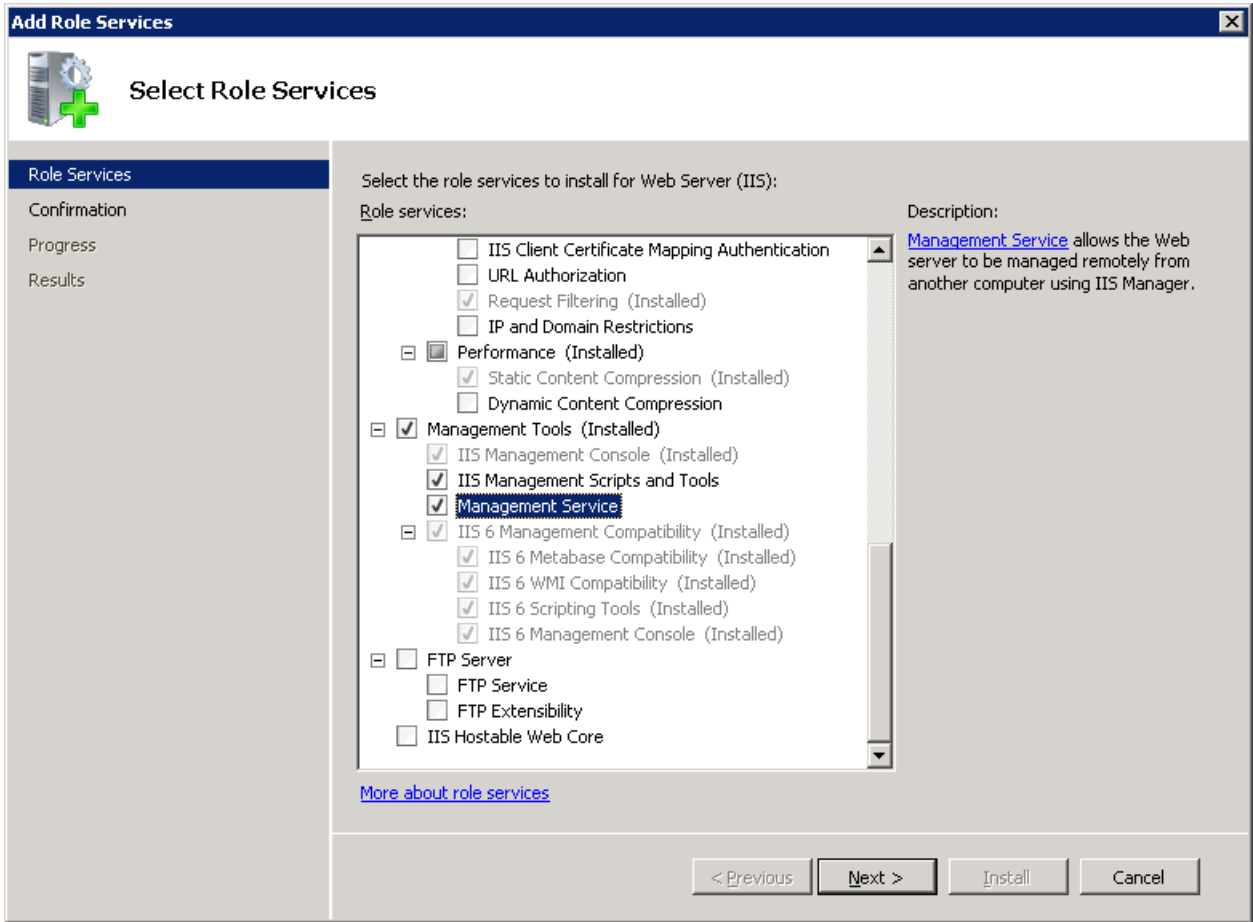
On Windows 2008 Server/Vista, make sure that ASP feature is also enabled as detailed in the following link:

<http://learn.iis.net/page.aspx/562/classic-asp-is-not-installed-by-default-on-iis-70-and-iis-75/>

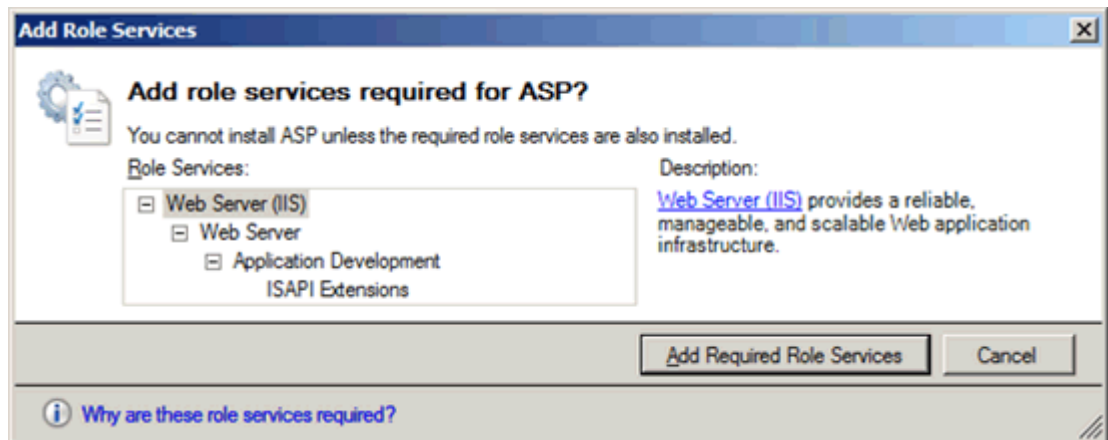
Summary:

1. Click **Start**, point to **Administrative Tools**, and then click **Server Manager**.
2. In the **Server Manager** hierarchy pane, expand **Roles**, and then click **Web Server (IIS)**.
3. In the **Web Server (IIS)** pane, scroll to the **Role Services** section, and then click **Add Role Services**.
4. On the **Select Role Services** page of the **Add Role Services Wizard**, select **ASP**.





5. if the **Add role services required by ASP** dialog box appears, click **Add Required Role Services**. (This page appears only if you have not already installed the ISAPI Extensions role service on your server.)



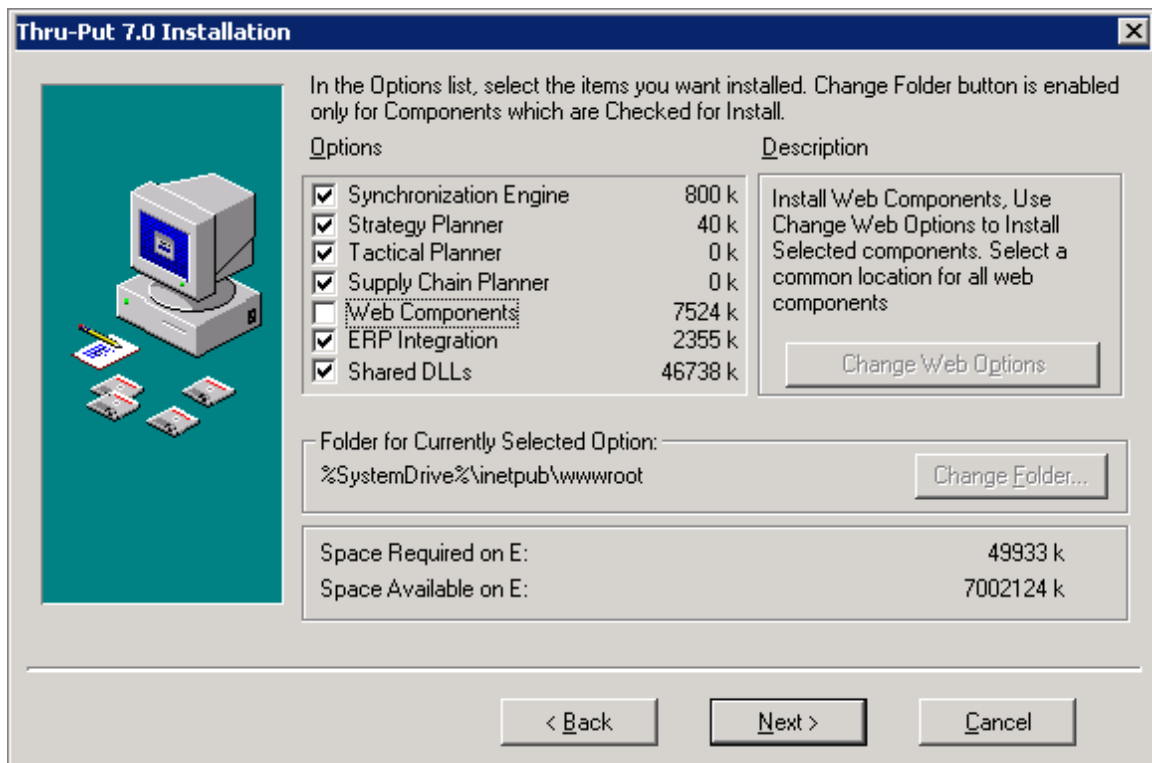
1. On the **Select Role Services** page, click **Next**.
2. On the **Confirm Installation Selections** page, click **Install**.

3. On the **Results** page, click **Close**.

Important note while installing Thru-Put on Windows 2008/Vista

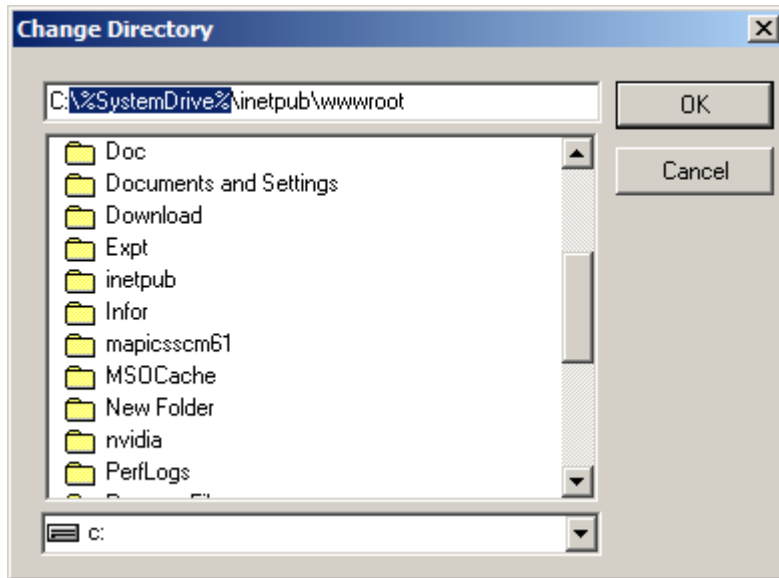
If you don't plan to use TPWeb, then uncheck "Web Components" from the installation screen below:

One of the shortcomings while installing Thru-Put on Windows 2008 is, under certain environments Thru-Put install utility can not identify the System Drive on your system where IIS is installed. In that scenario, Thru-Put will install the Thru-Put Web components (TPWeb) under the current folder where the installation set up (SCMSetUp.EXE or SH15535.exe) is running from. This symptom can be easily overcome by looking at the installation screen as shown below.

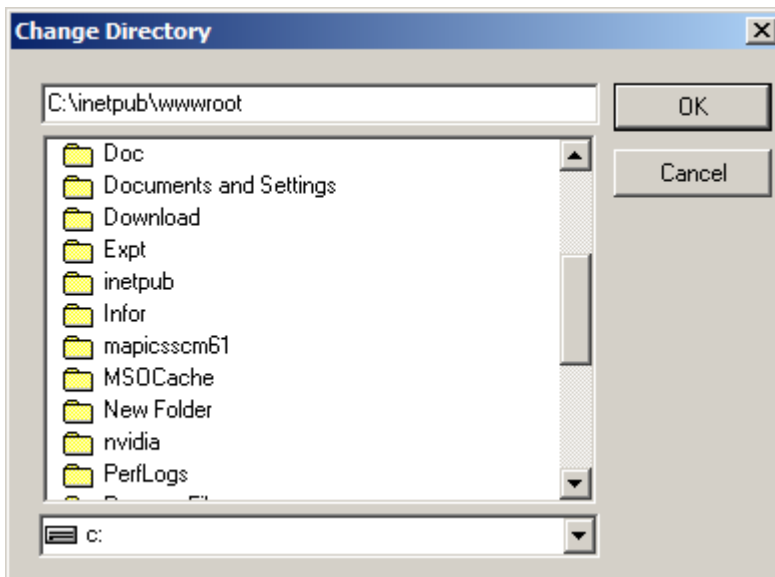


In the above screen, if you click on Web Components check box, you might see Folder selected for Currently selected Options as "%SystemDrive%\inetpub\wwwroot". If you leave this default selection, install utility will create a subfolder named "%SystemDrive%\inetpub\wwwroot\TPWeb" and place all files belonging to Thru-Put Web components

inside. If this happens then Thru-Put Web Server will not operate smoothly. This can be avoided by manually specifying the physical path of “inetpub\wwwroot” on your hard drive (typically C drive). This can be done by clicking on “Change Folder” which will bring up following screen:



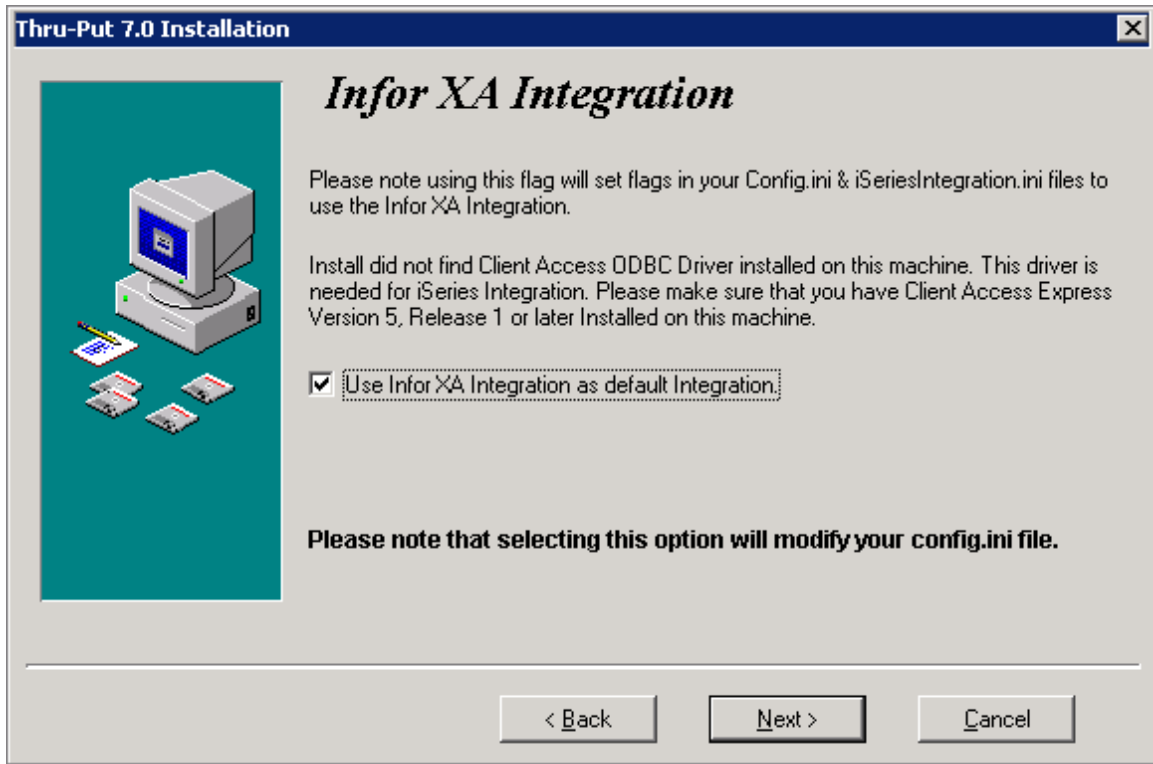
Change Directory to C:\inetpub\wwwroot or any other directory where you wish you to install the Thru-Put web components as shown below:



If your IIS is installed on a different drive, please change the drive appropriately installed.

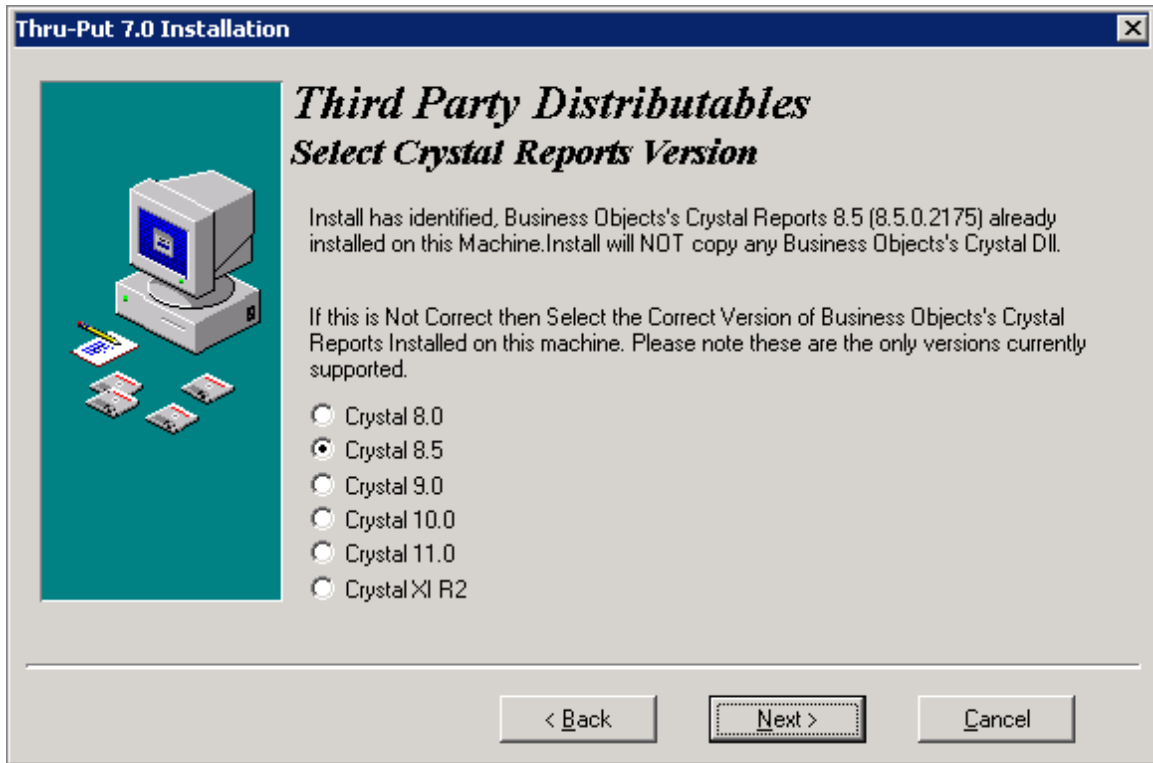
Installing XA configuration files.

During install if you check the box Use Infor XA integration as shown below, XA configuration files will be installed. (You can also choose configure XA later without this step)



Installing Crystal Report run time for the TPWeb

If you plan to use TPWeb Reports, it is better to install the Crystal software first. If you don't have the Crystal Reports Software installed, choose the version you might install so that supporting files can be copied automatically. These components are used in TPWeb reports only. For planning purpose, report components have been installed as a part of Thru-Put installation pre-requisites.

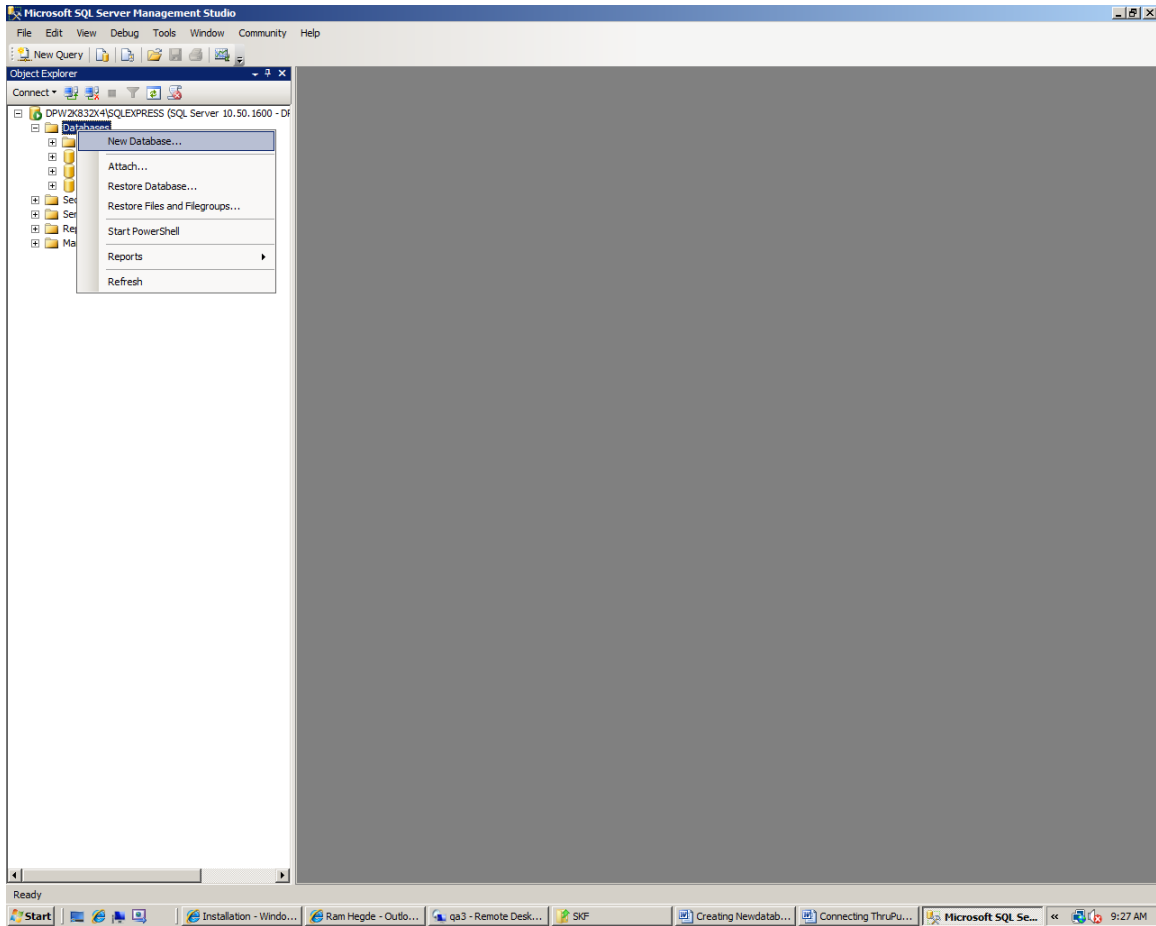


This complete the Thru-Put software components on your system.

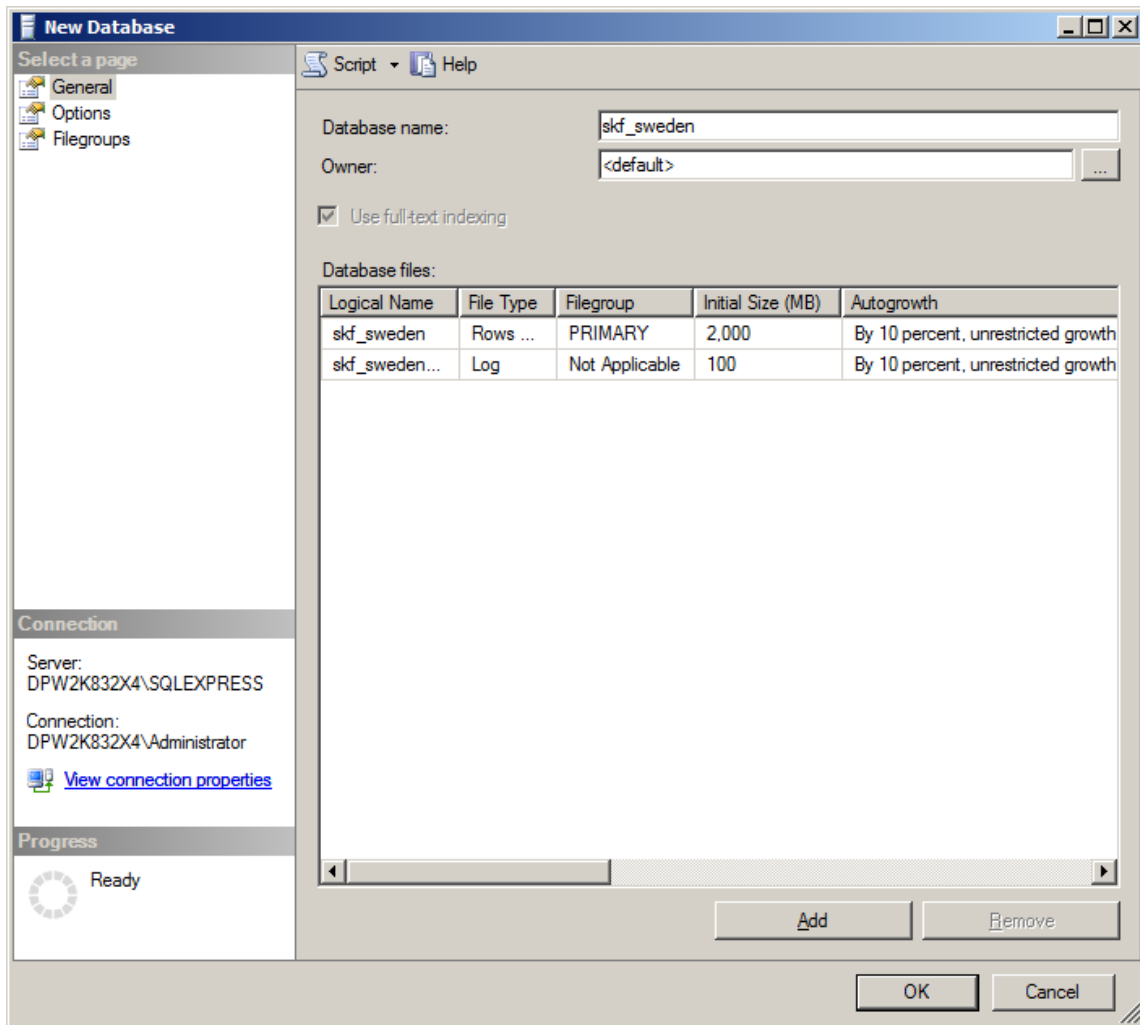
Creating the SQL Server database

1. Go to Microsoft SQL Server management Studio and Right Click on Databases Node as shown below

Deploying Thru-Put 7.0 on Windows 2008 R2 Server

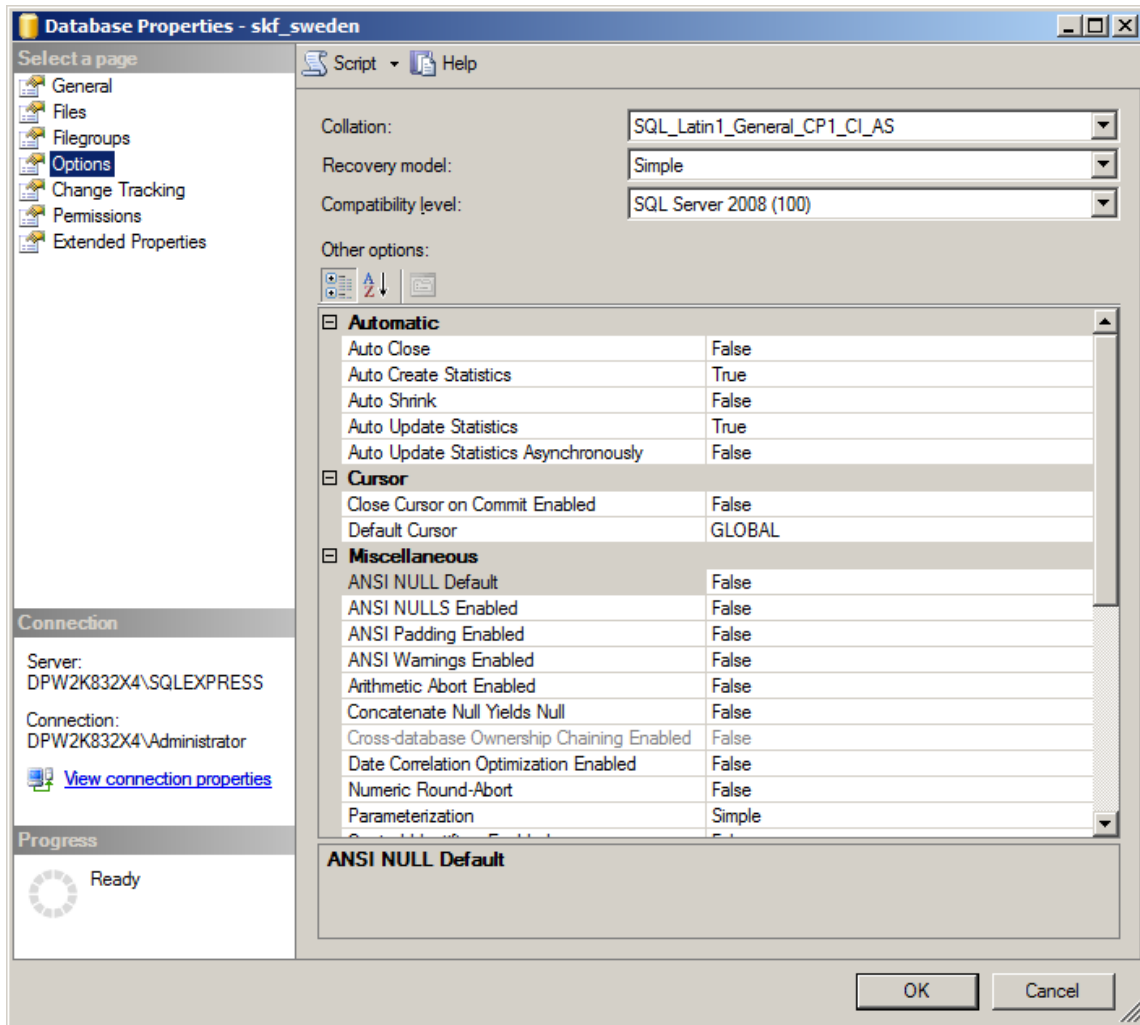


2. Click on New Database... You will get following dialog:



Provide the name of the new database. Make sure the initial size is at least 2GB for the data and 100MB for log files and “Autogrowth” set to 10%-20%, unrestricted growth as shown below:

3. Click on the Options tab and make sure “Recovery Model” is set to Simple. Keep remaining at default

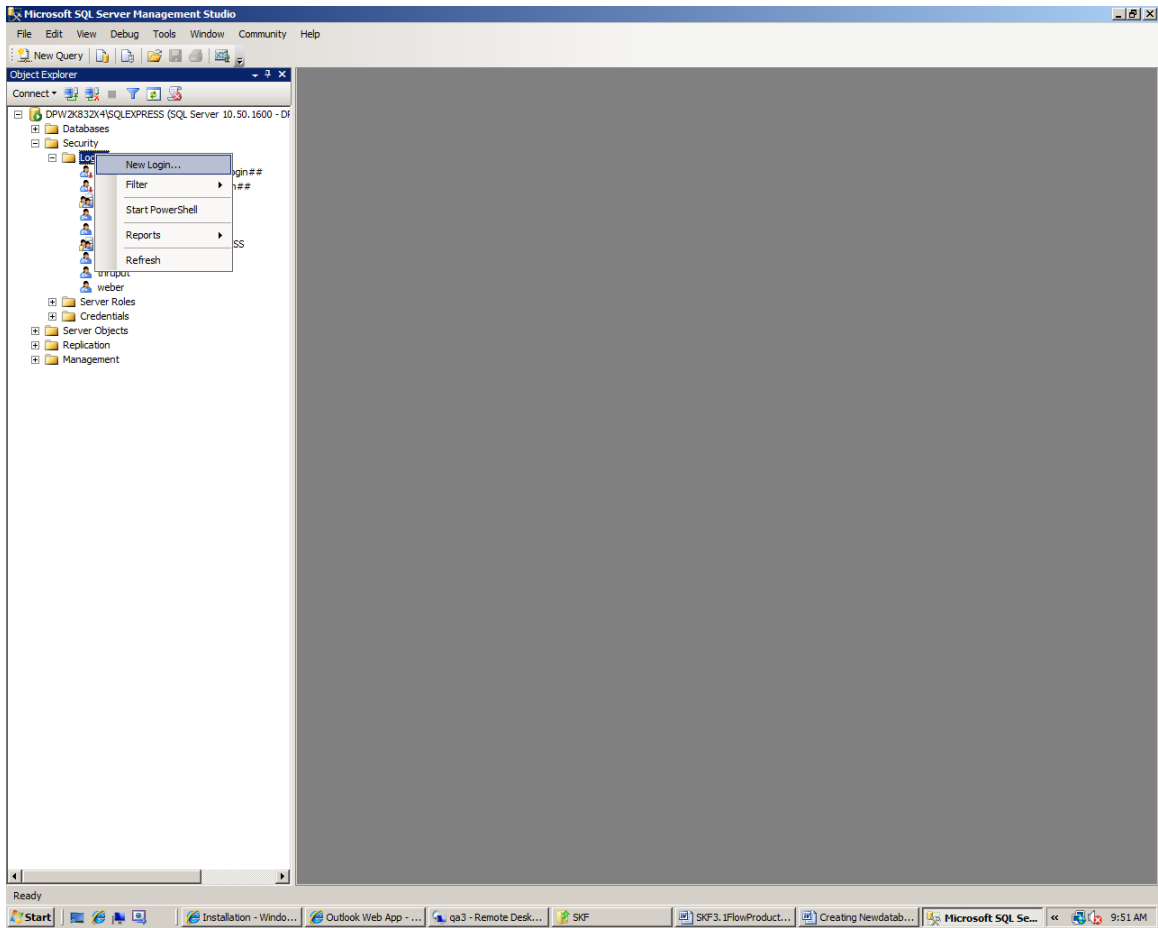


This finishes creating a new SQL Server database

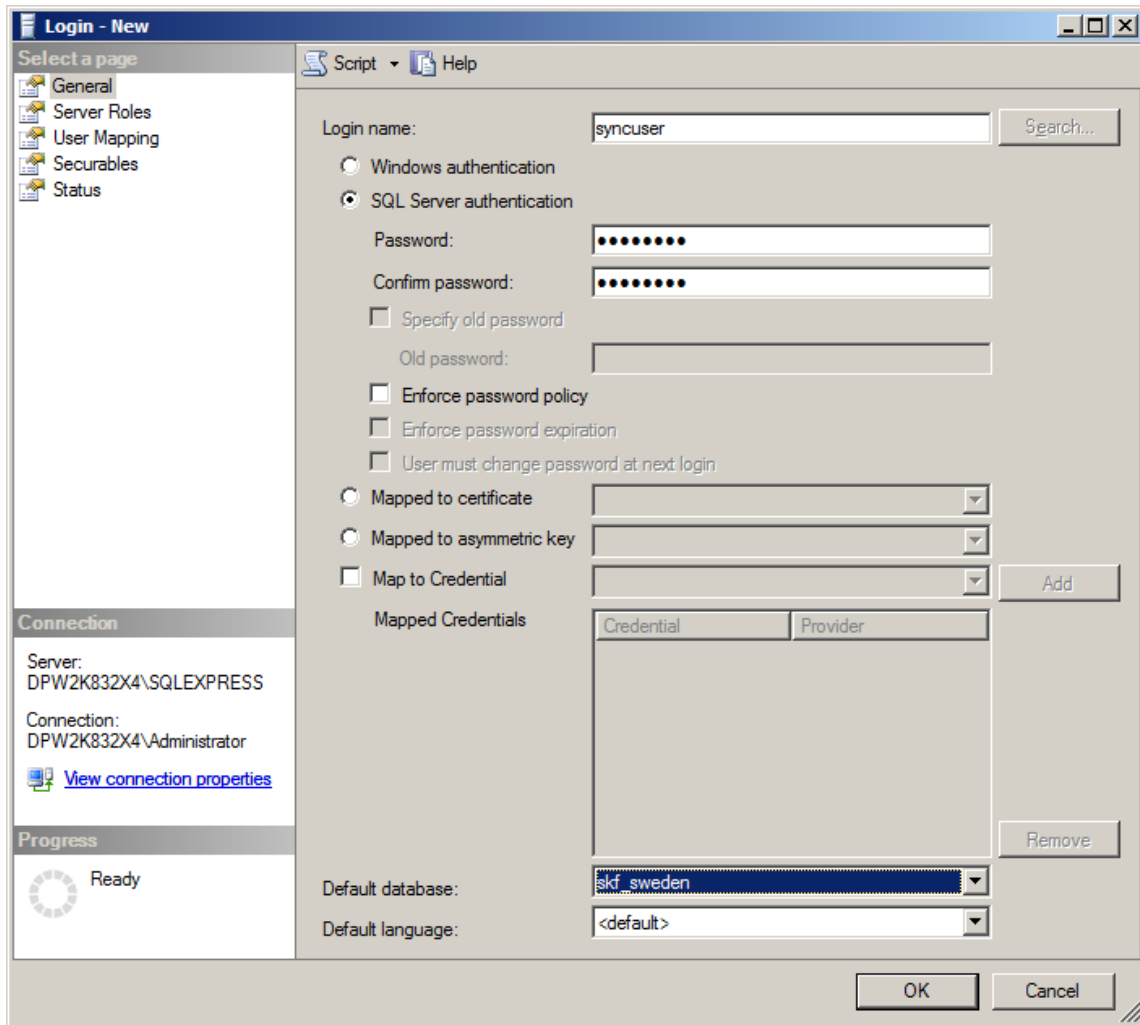
Creating a New User for Thru-Put

1. Go to SQL Server Management Studio and Click on Security node as shown below

Deploying Thru-Put 7.0 on Windows 2008 R2 Server



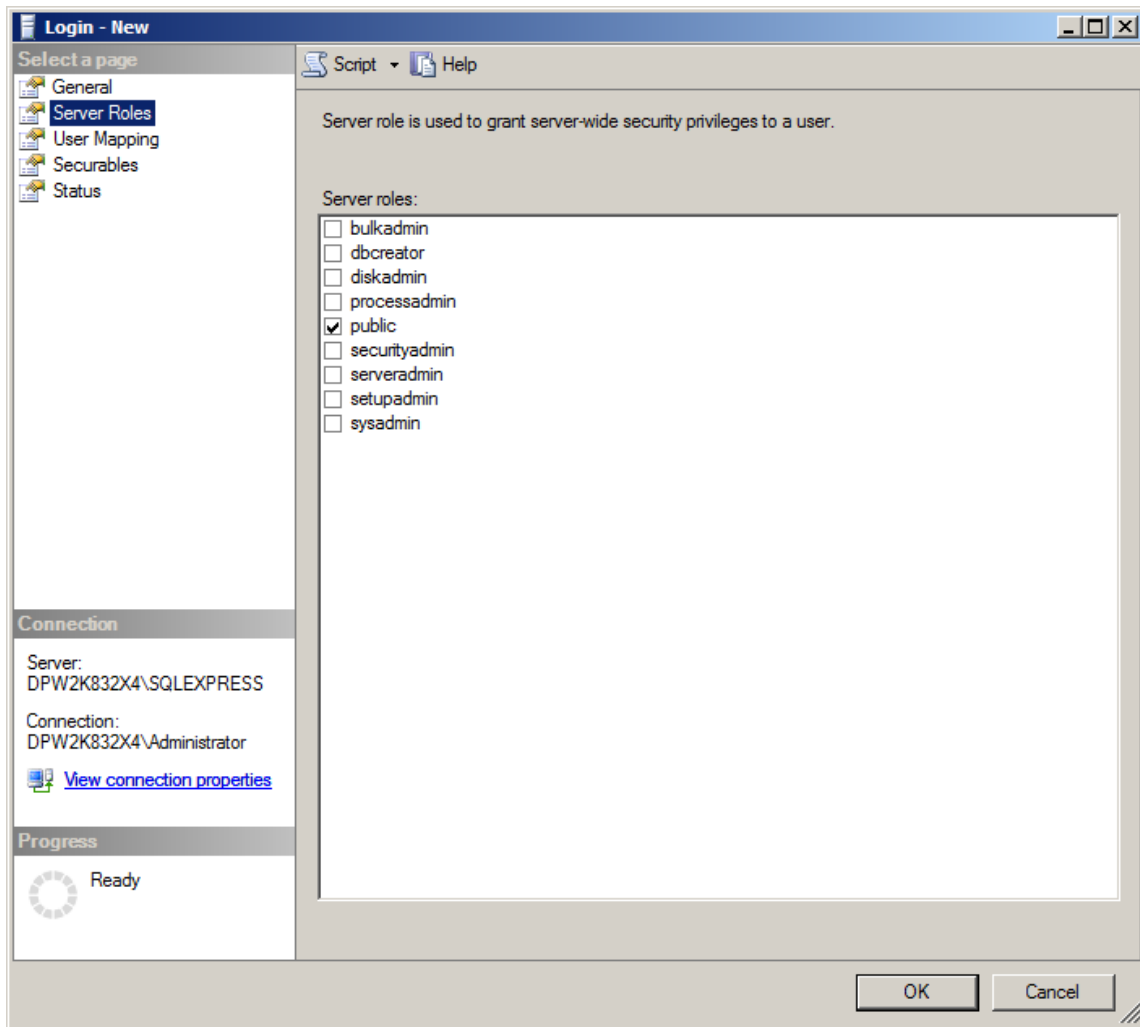
2. Click on the New Login. You will see following dialog:



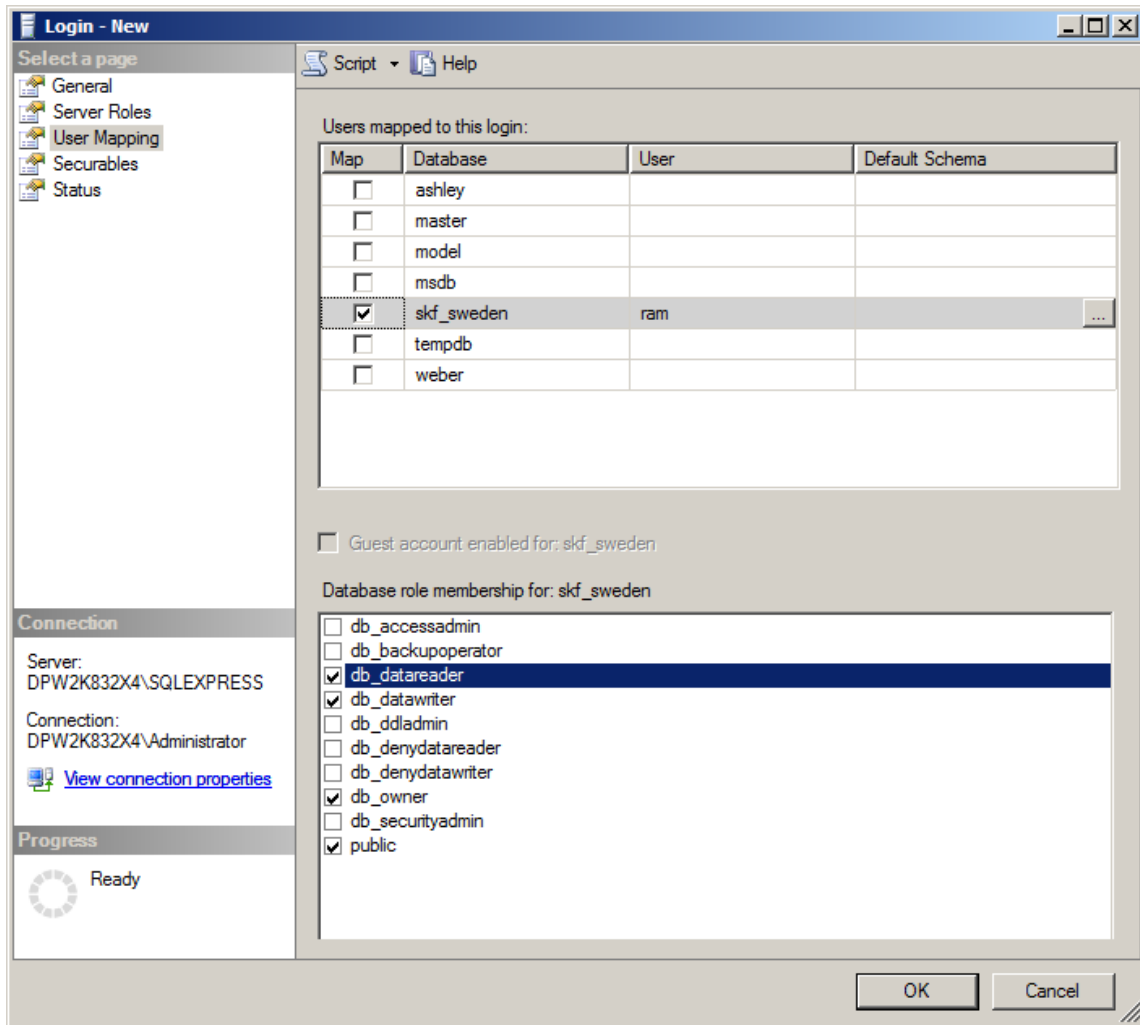
Make sure the authentication is set to SQL Server authentication instead of Windows authentication as shown below:

3. Click on the Server Roles as shown below:

Deploying Thru-Put 7.0 on Windows 2008 R2 Server



4. Click on the User Mapping option and choose as shown below:



This finishes setting up SQL server and the SQL server user.

Configuring Thru-Put to connect to SQL Server database

Thru-Put 7.0 uses “**SQL Native Client 10.0**” (or above) version of ODBC driver to connect to SQL Server Database. You can set up this connection by using Thru-Put DB Utility. With Thru-Put 7.0 Native SQL Server Connection no longer required. Thru-Put uses ODBC Native Client Driver for reading and writing to SQL Server database and for Crystal Reports.

Setting up SQL Server ODBC connection

Step 1: Open DbUtility from Programs->Thru-Put7.0->Database Utility. Please choose “Run as Administrator” option. (else System will not allow you to change any settings and ignores your changes)

Step 2: Go to File->Download Configuration

In the database Type entry combo box, choose “ODBC”. Make sure you have created a System DSN for the SQL Server ODBC driver with SQL native Client 10.0 or above.

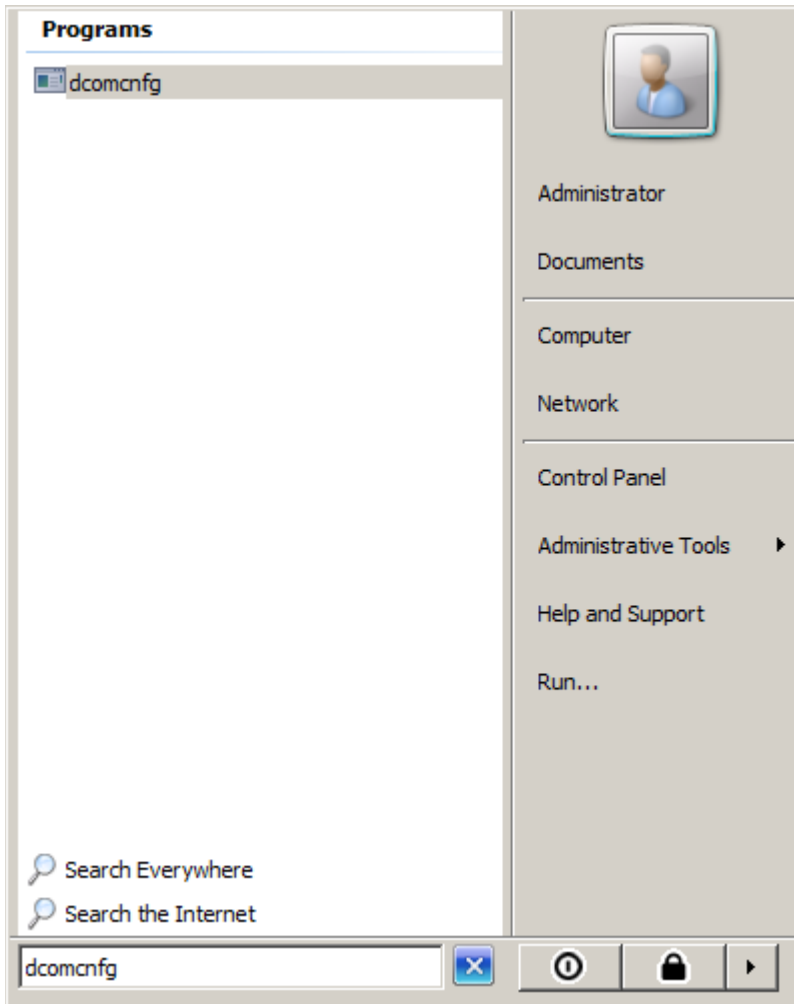
Changing the Configuration to use SQL Server

After installing Thru-Put, locate the folder where installation folder and open config.ini file in a text editor. Modify the entry UseDAOForDatabase=0 if not already.

Configuring DCOM

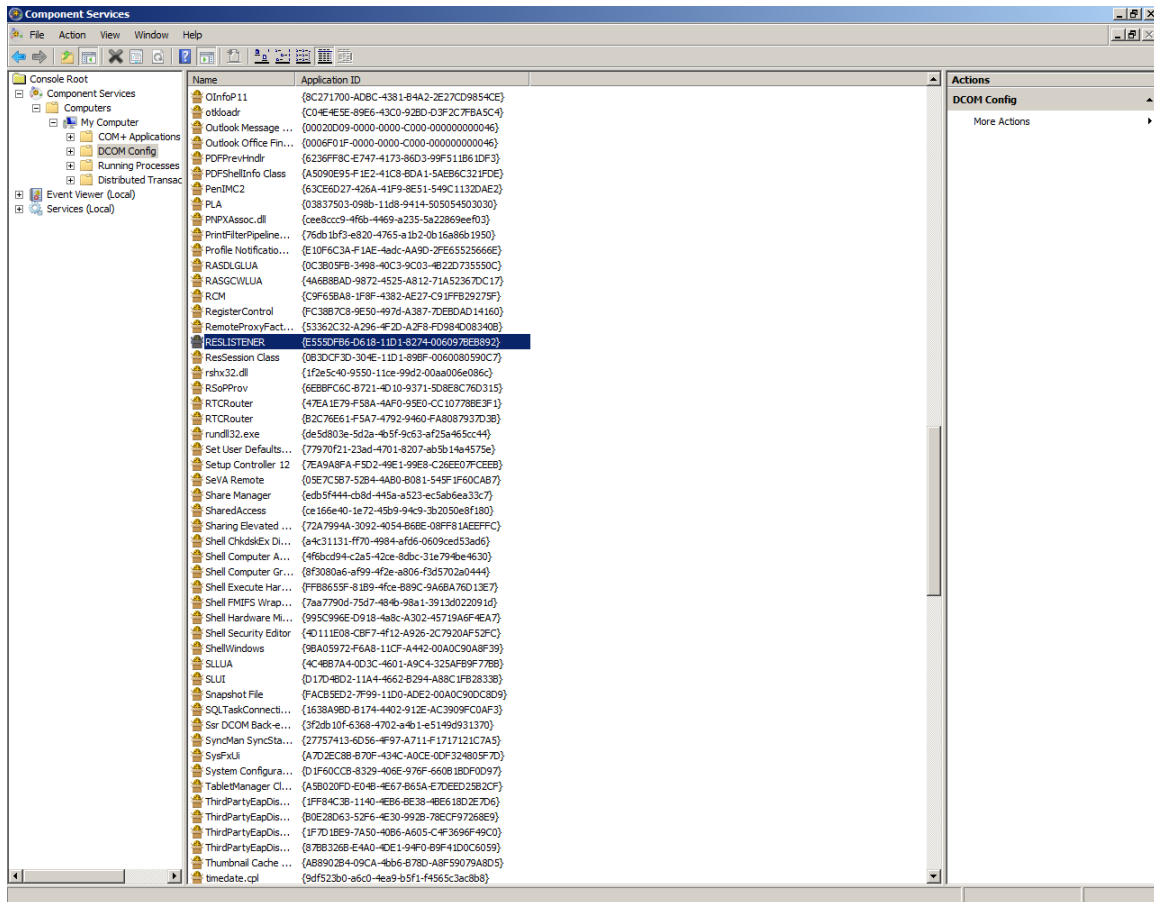
If you don't plan to use Customer Service Workbench, you can ignore this section.

From Start Menu Run DCOM configuration by typing dcomcnfg as shown below:



You will see following screen

Deploying Thru-Put 7.0 on Windows 2008 R2 Server

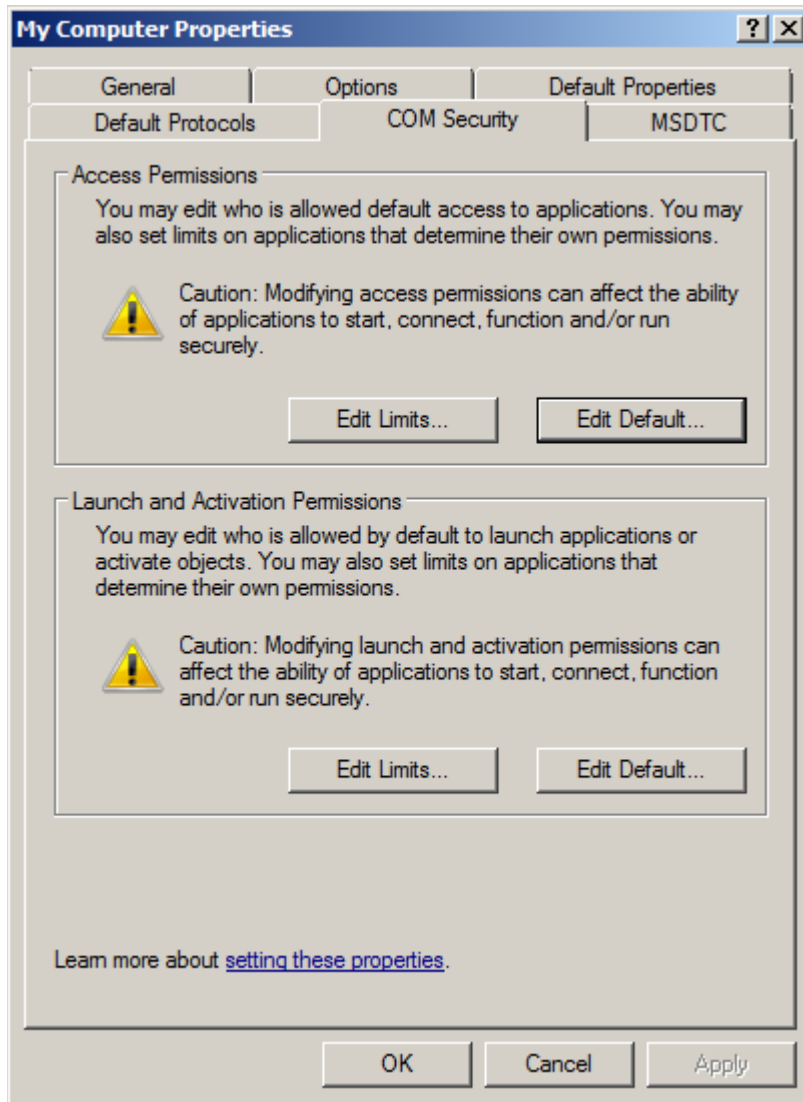


Go to Console Root->Component Services->Computers->My Computer->DCOM Config folder on the left pane and expand the view. You should see the list of components registered on the right pane as shown above. You should be to locate two components that are part of TPWeb viz. RESLISTENER and ResSession class. If you don't see both components, then DCOM service has not registered your class successfully. In such case, please run register.bat from C:\THRU-PUT70 folder and reboot your computer and come back again.

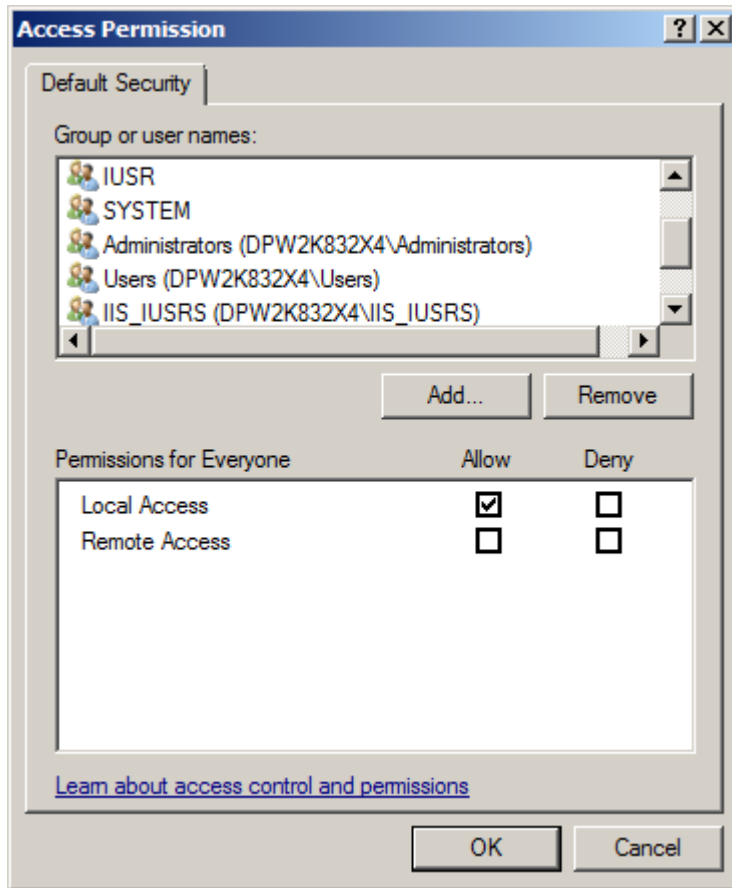
Configuring Default settings of DCOM

If you don't plan to use Customer Service Workbench, you can ignore this section.

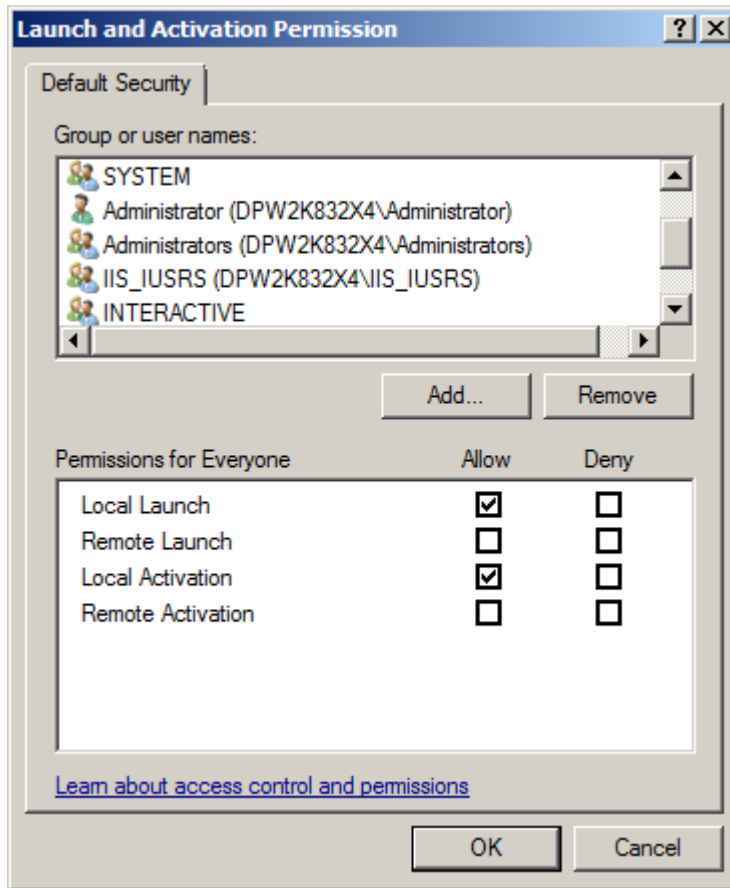
To configure "Default Access" and "Default Launch" permissions right click on "My Computer" on the left hand pane and select properties. A window will appear with a number of tabs. Select the tab titled "COM Security" as shown below.



Click on Edit Default. You need to have System, Interactive, IIS and IIS_USR in this list with "Allow" Access permissions.



Similarly Click on Default Launch and Activate permission. Make sure the above users have “Local Launch” and “Local Activation” permission.



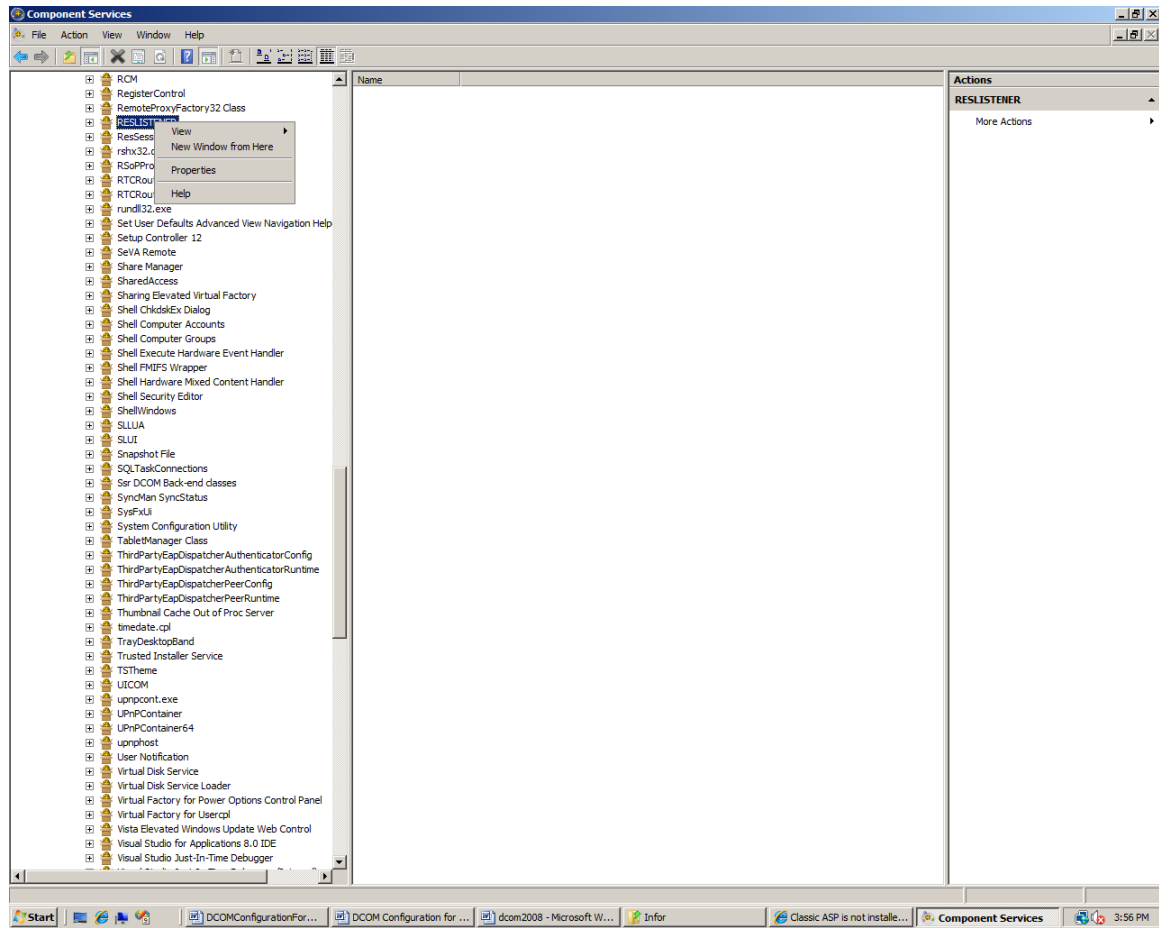
Configuring DCOM settings of TPWeb components

If you don't plan to use Customer Service Workbench nor TPWeb, you can ignore this section.

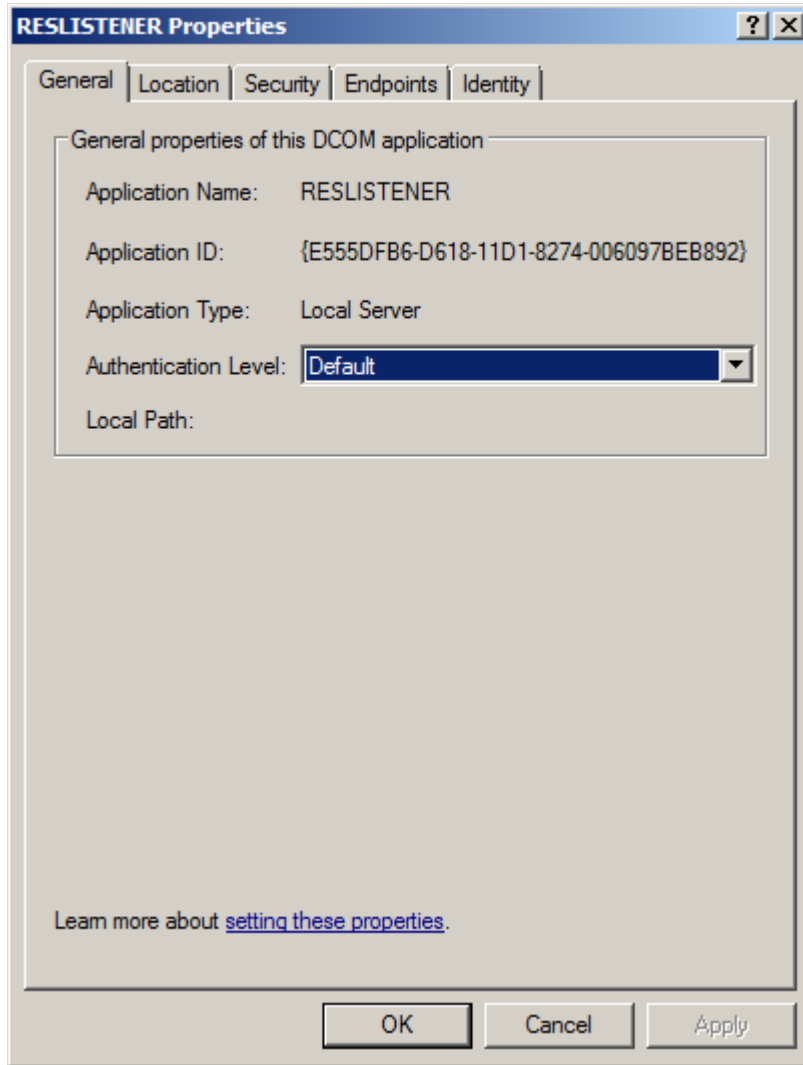
These settings are the same as in other Windows systems like XP/Vista.

Right click on **Reslistener** class and choose **Properties**.

Deploying Thru-Put 7.0 on Windows 2008 R2 Server

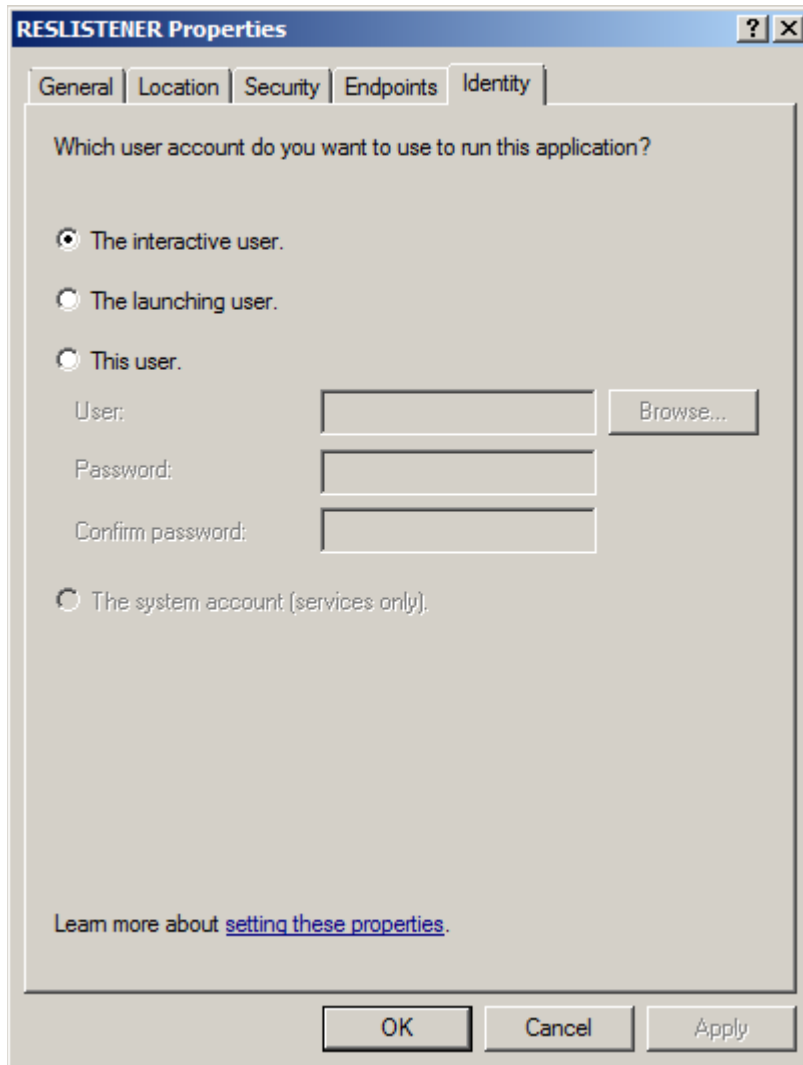


You should see the dialog below



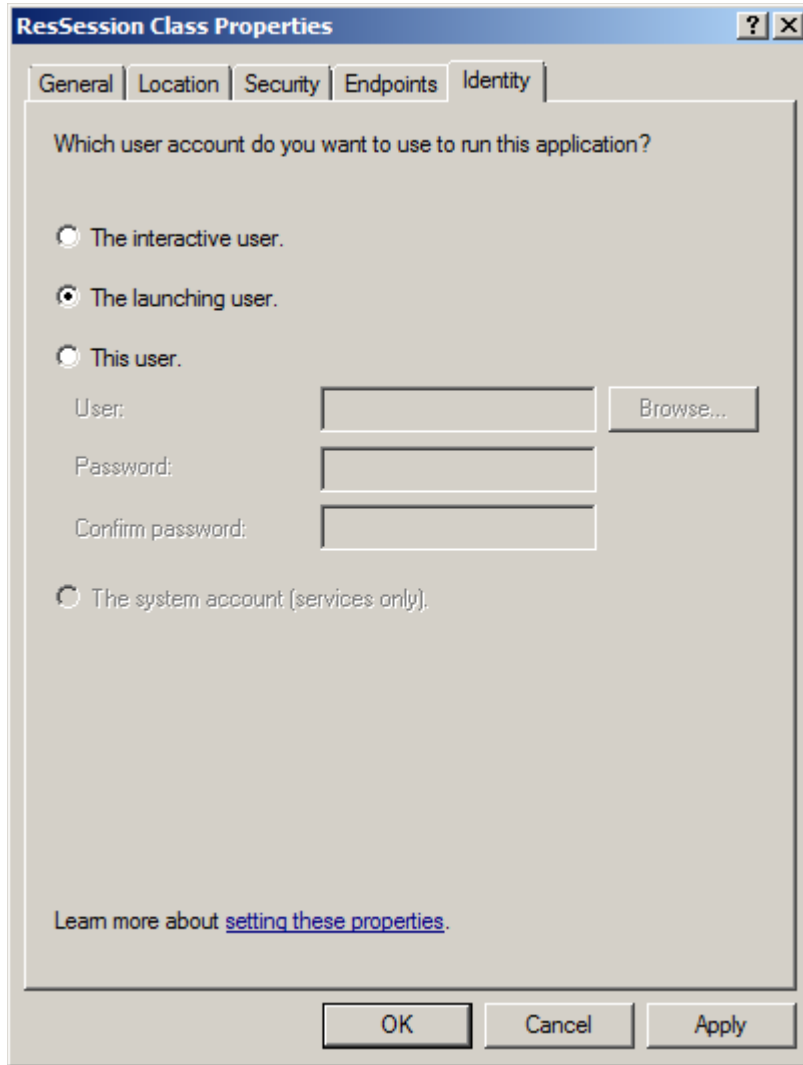
The settings should look as above.

Choose the “**Identity**” tab as shown below.

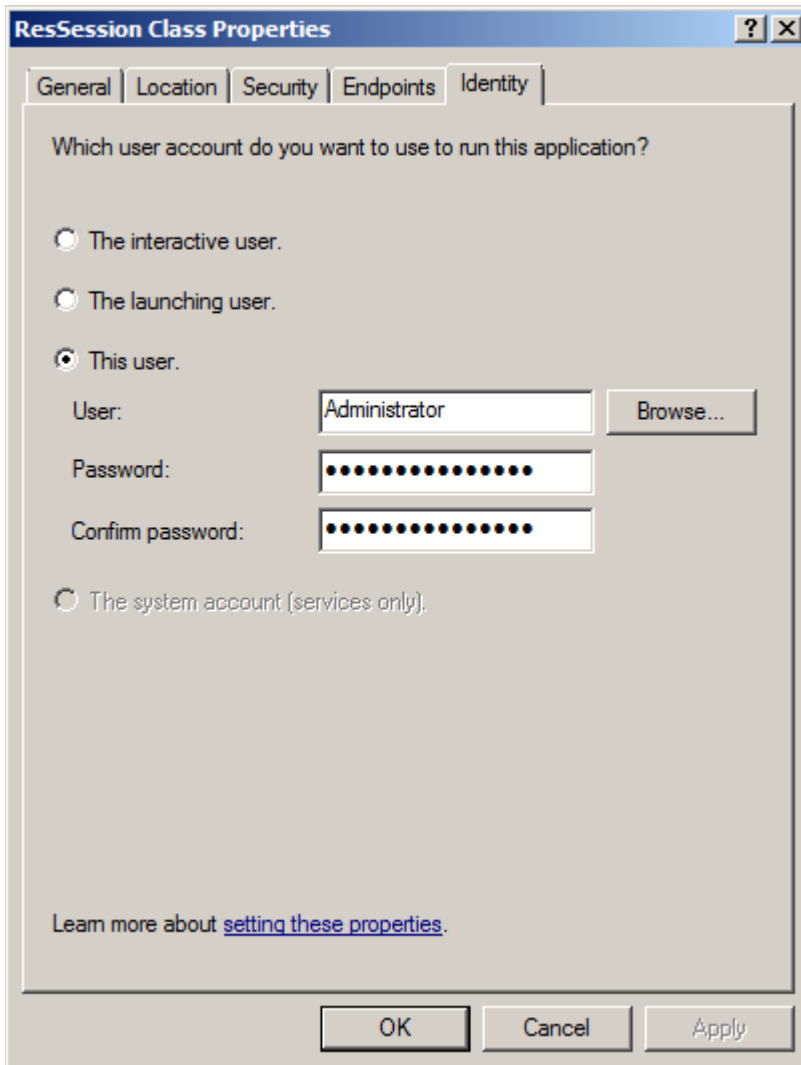


You can also set to a predetermined administrator user by choosing the **“This User”** and providing the local admin credentials. Click **“OK”** after done.

Similarly, from the DCOM Config screen, right click on **“ResSession Class”** and you will see the dialog similar to the earlier dialog shown above. (If you don’t see ResSession class, you need to run Register.bat). Click on the **“Identity”** tab and set to **“Launching user”** as shown below.



Or you can set to **“This User”** and provide the credential of the local administrator as shown below:



Once done click “**OK**”. This ends the DCOM configuration. Close the DCOM Config application utility.

Open Internet Explorer, and type in the address <http://localhost/tpweb> and you should see welcome login screen if you are successful :

Registering Crystal 32 Viewer Dlls

Note: If you don’t plan to use TPWeb Reports, you can ignore this section.

Run Command Prompt with elevated permission and go to <TPWeb> folder. You should see a batch file called WebRegister.bat. Open the file in notepad and modify each line where regsvr32 is referred and replace it with c:\windows\syswow64\regsvr32 and replace the <ActiveViewer folder> with appropriate folder on your hard drive where those files are. Following is a sample file:

Rem this will Register Crystal Viewer related DLLs on 64 Bit Windows 2008R2

```
C:\Windows\SysWow64\regsvr32 /u <ActiveXViewer folder>\crviewer.dll
```

```
C:\Windows\SysWow64\regsvr32 /u <ActiveXViewer folder>\Emfgen.dll
```

```
C:\Windows\SysWow64\regsvr32 /u <ActiveXViewer folder>\swebrs.dll
```

```
C:\Windows\SysWow64\regsvr32 /u <ActiveXViewer folder>\sviewhlp.dll
```

```
C:\Windows\SysWow64\regsvr32 <ActiveXViewer folder>\crviewer.dll
```

```
C:\Windows\SysWow64\regsvr32 <ActiveXViewer folder>\Emfgen.dll
```

```
C:\Windows\SysWow64\regsvr32 <ActiveXViewer folder>\swebrs.dll
```

```
C:\Windows\SysWow64\regsvr32 <ActiveXViewer folder>\sviewhlp.dll
```

Save the file. Now run this modified batch file from command line.

Configuring SQL Server to use Crystal 32 Bit version

Note: If you don't plan to use TPWeb Reports, you can ignore this section.

Thru-Put Web Report Engine is different than the Thru-Put Report Engine in Sync session. Thru-Put Sync engine uses 64 Bit version of Crystal which is single user license and is free and is included along with Thru-Put distributable.

Thru-Put Web Reports use 32 Bit version of Crystal and can be used for multiuser purpose. To make TPWeb 64 bit version compatible with 32 Bit version of Crystal, crystal software needs 32 Bit version of ODBC SQL Server driver. Whenever user creates a 64 Bit ODBC DSN for connecting to Thru-Put database, user should also create another ODBC DSN for 32 with the same name but with 32 suffix.

For Example, if the 64 Bit DSN name is TPProduction then, DSN name for 32 bit ODBC DSN should be TPProduction32.

Deploying Thru-Put 7.0 on Windows 2008 R2 Server

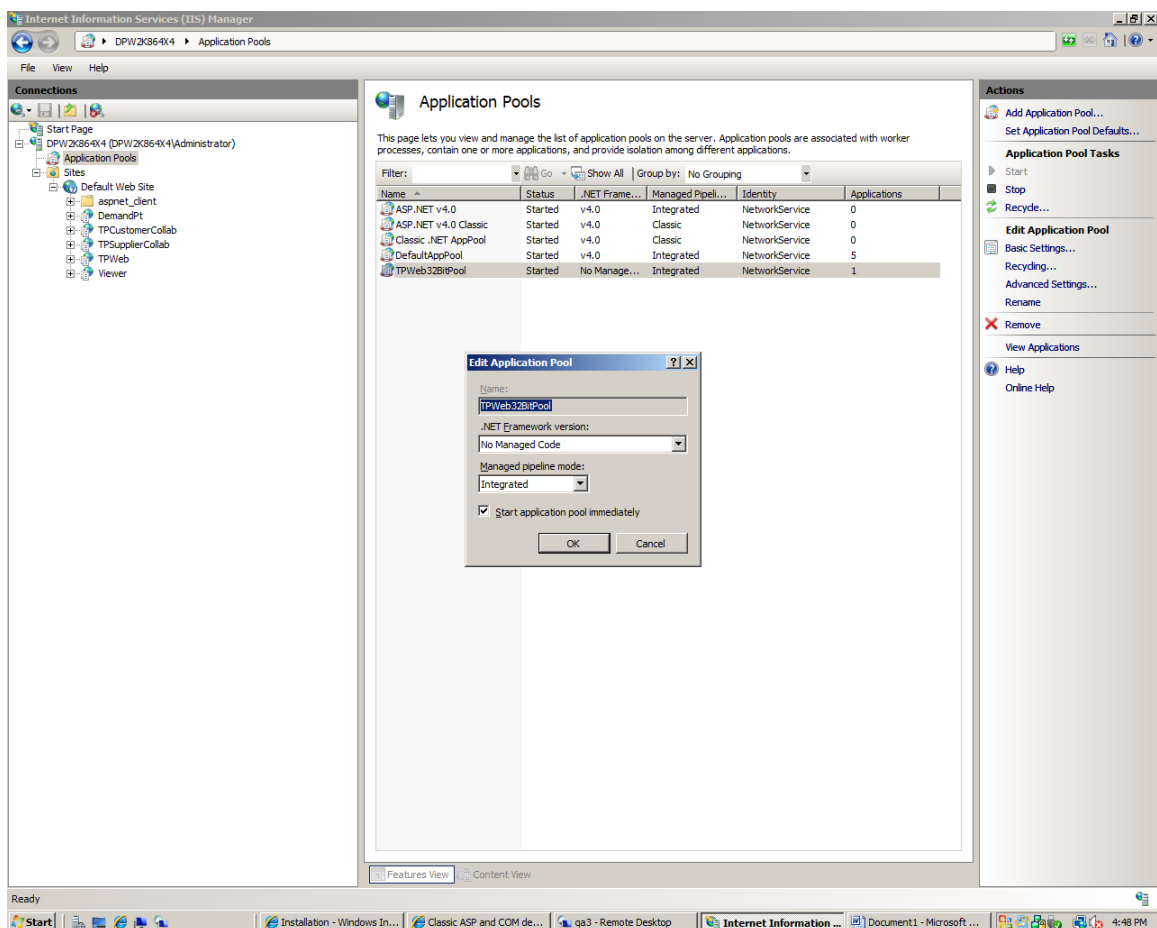
For creating 32 Bit ODBC DSN, you should not use DBUtil /Resonance. Instead, open Command Prompt window as an Administrator and then goto c:\Windows\SysWow64 folder and run ODBCAD32.exe to open the ODBC dialog and make sure you see "SQL Server " in the driver list and use it. Even SQL Client 10.0 also OK.

Setting up Thru-Put TPWeb on Windows 2008 R2

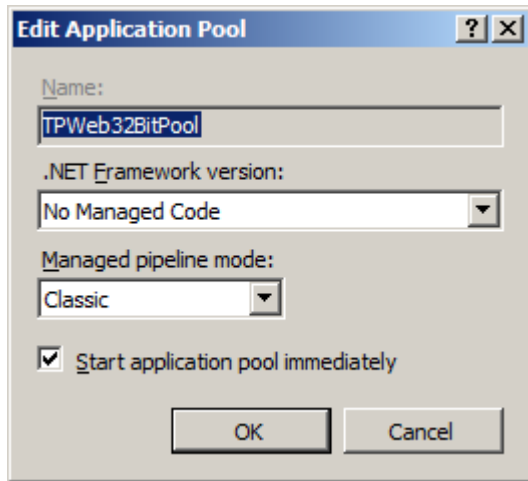
If you don't plan to use Customer Service Workbench nor TPWeb, you can ignore this section.

Following screenshots apply to Windows 2008 R2 Systems

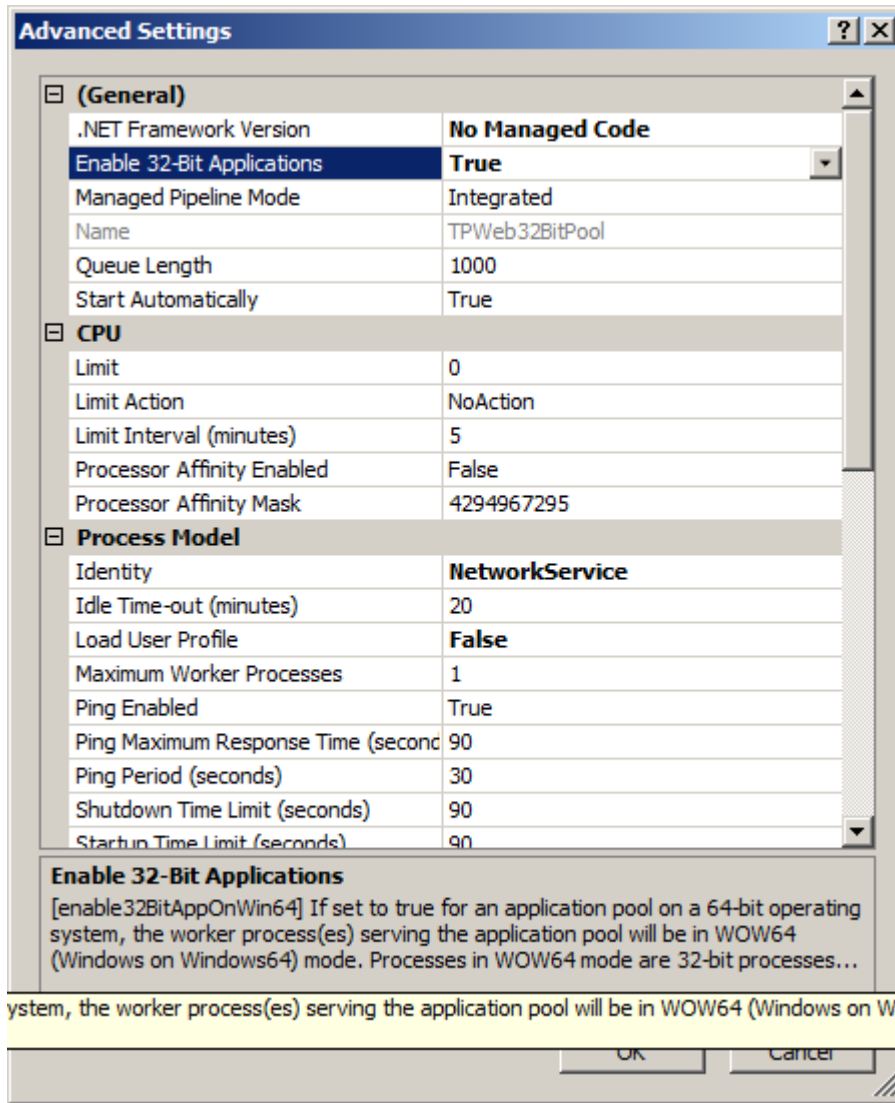
1. Go to IIS and choose Application Pools



2. Add a new Application pool or Modify Default app pool. In case you don't want to disturb the other Web Applications better to have separate app pool for TPWeb.

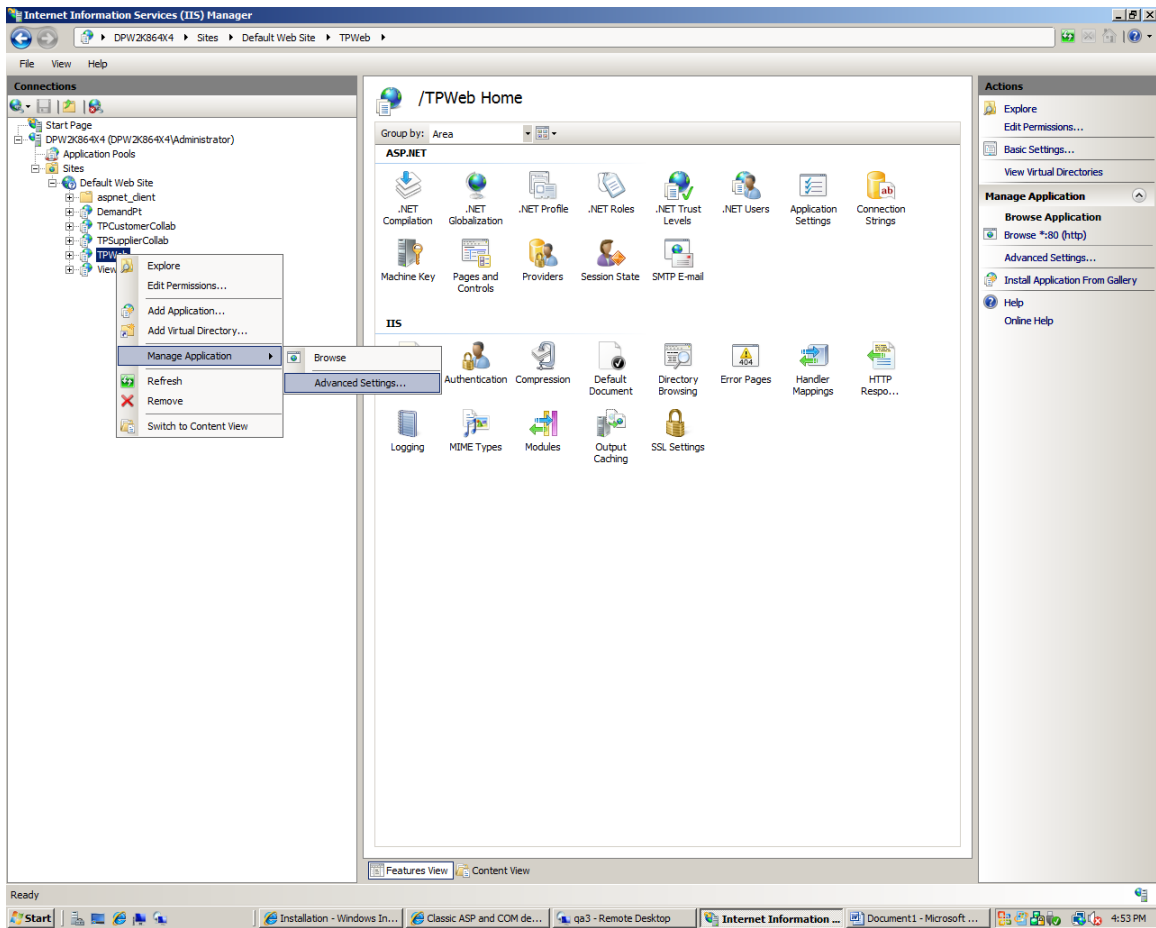


3. In the advanced Settings make sure 32 Bit applications are enabled as shown below:



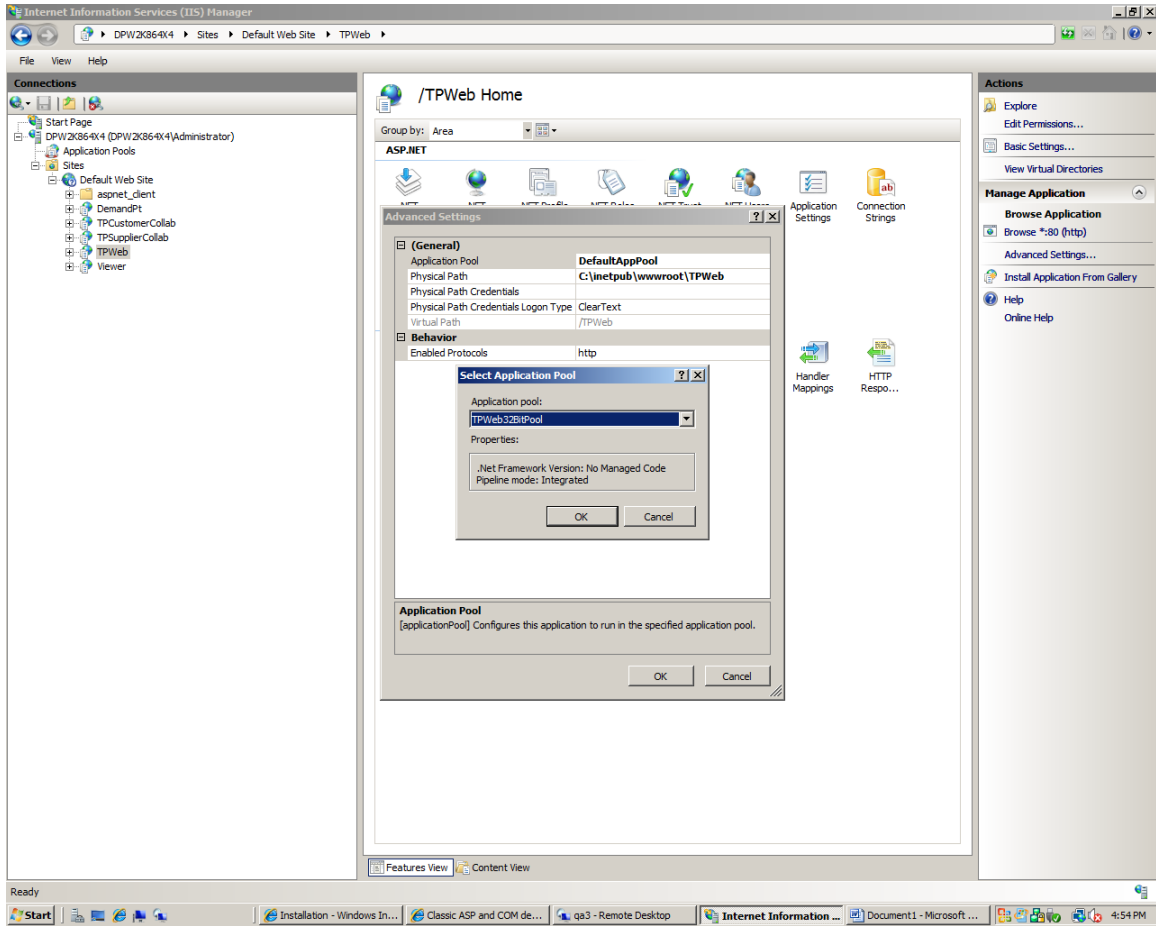
4. Now go to TPWeb on the left pane and right mouse click

Deploying Thru-Put 7.0 on Windows 2008 R2 Server



5. Make sure to change the Application Pool to TpWeb32BitPool you created in step 2 above

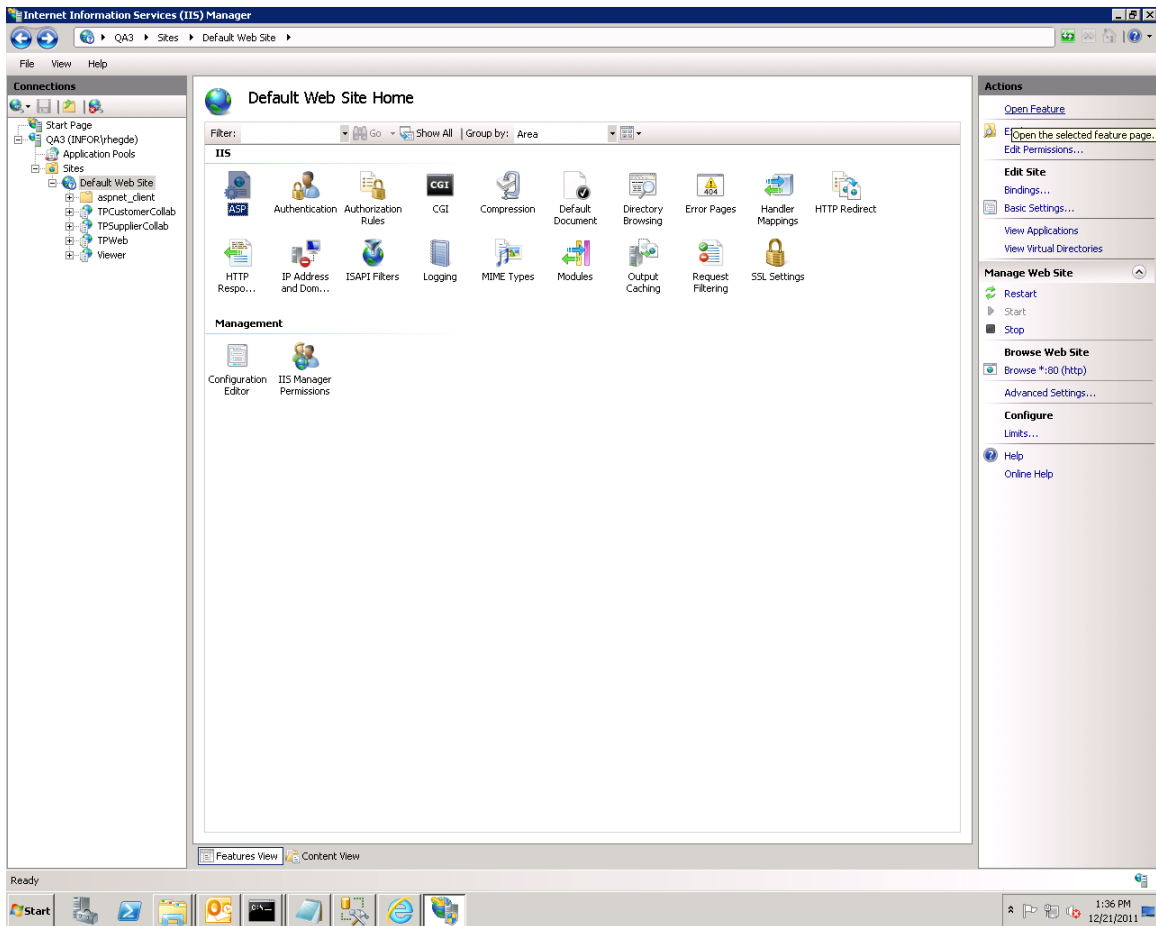
Deploying Thru-Put 7.0 on Windows 2008 R2 Server



6. Setting up Permission for all the folder in TPWeb

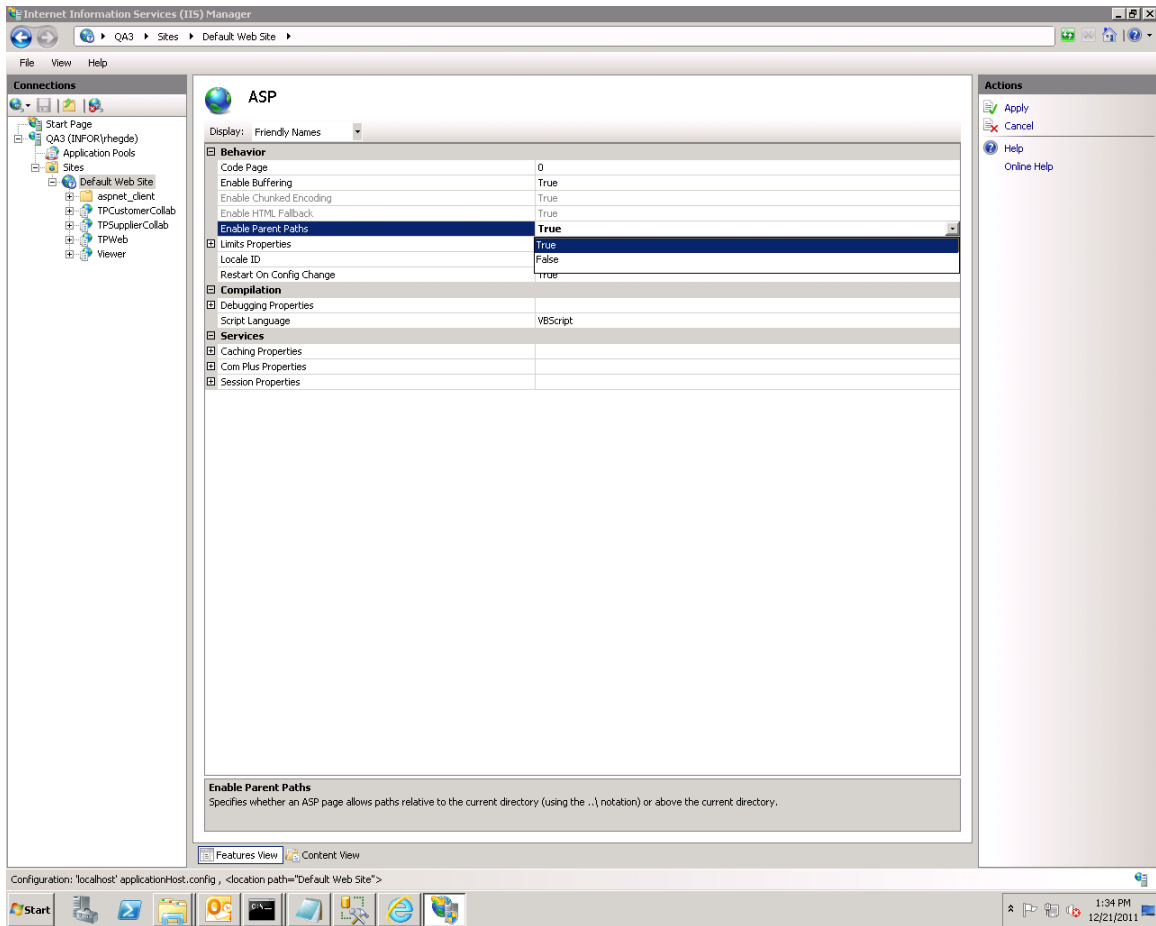
On the left pane, click on Default Website. Then on the right pane, click on ASP and then click on Open Feature on the Action section (far right) as shown below

Deploying Thru-Put 7.0 on Windows 2008 R2 Server



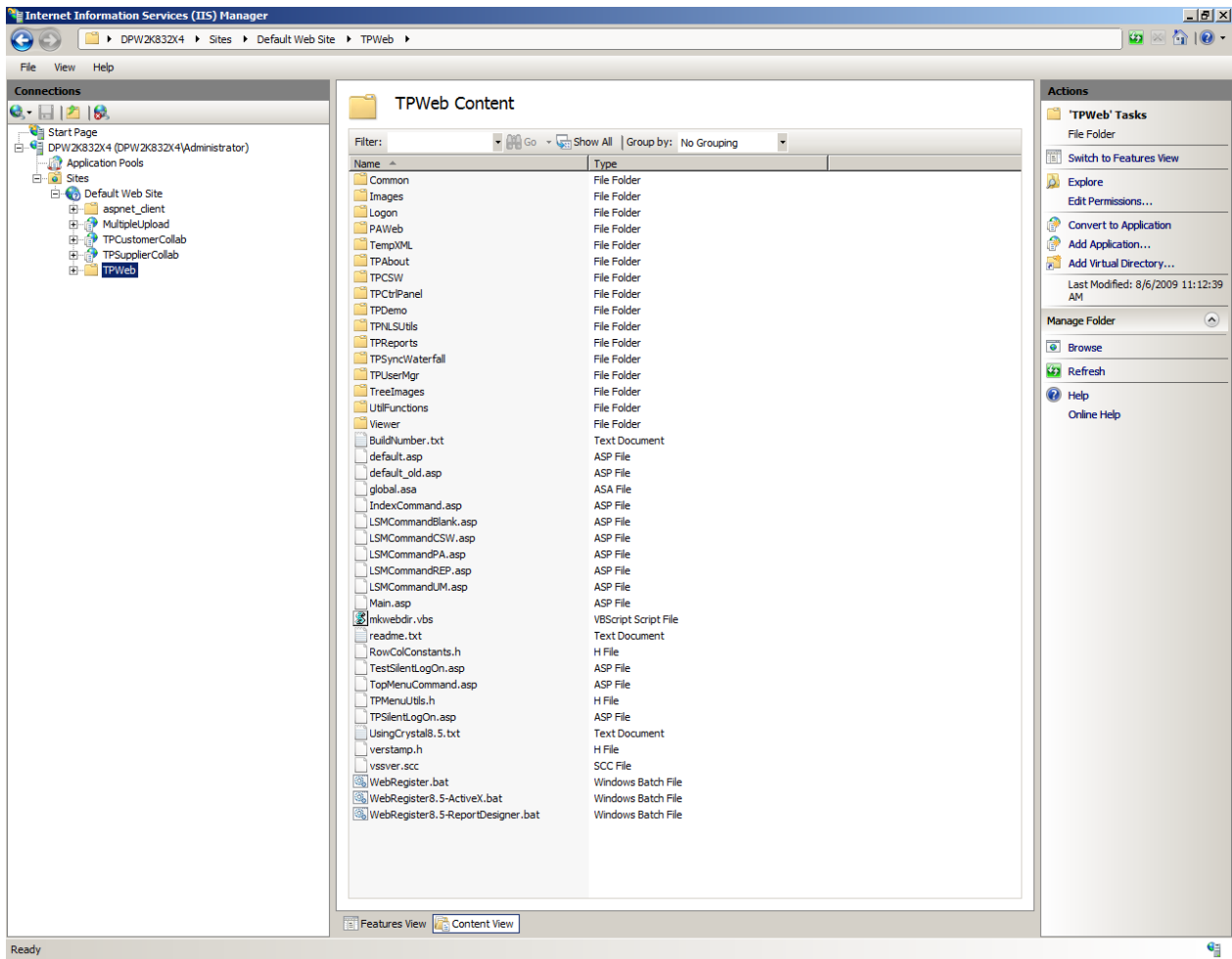
You will see following page. Choose Enable Parent Paths and set it to True if it is set to false as shown below.

Deploying Thru-Put 7.0 on Windows 2008 R2 Server



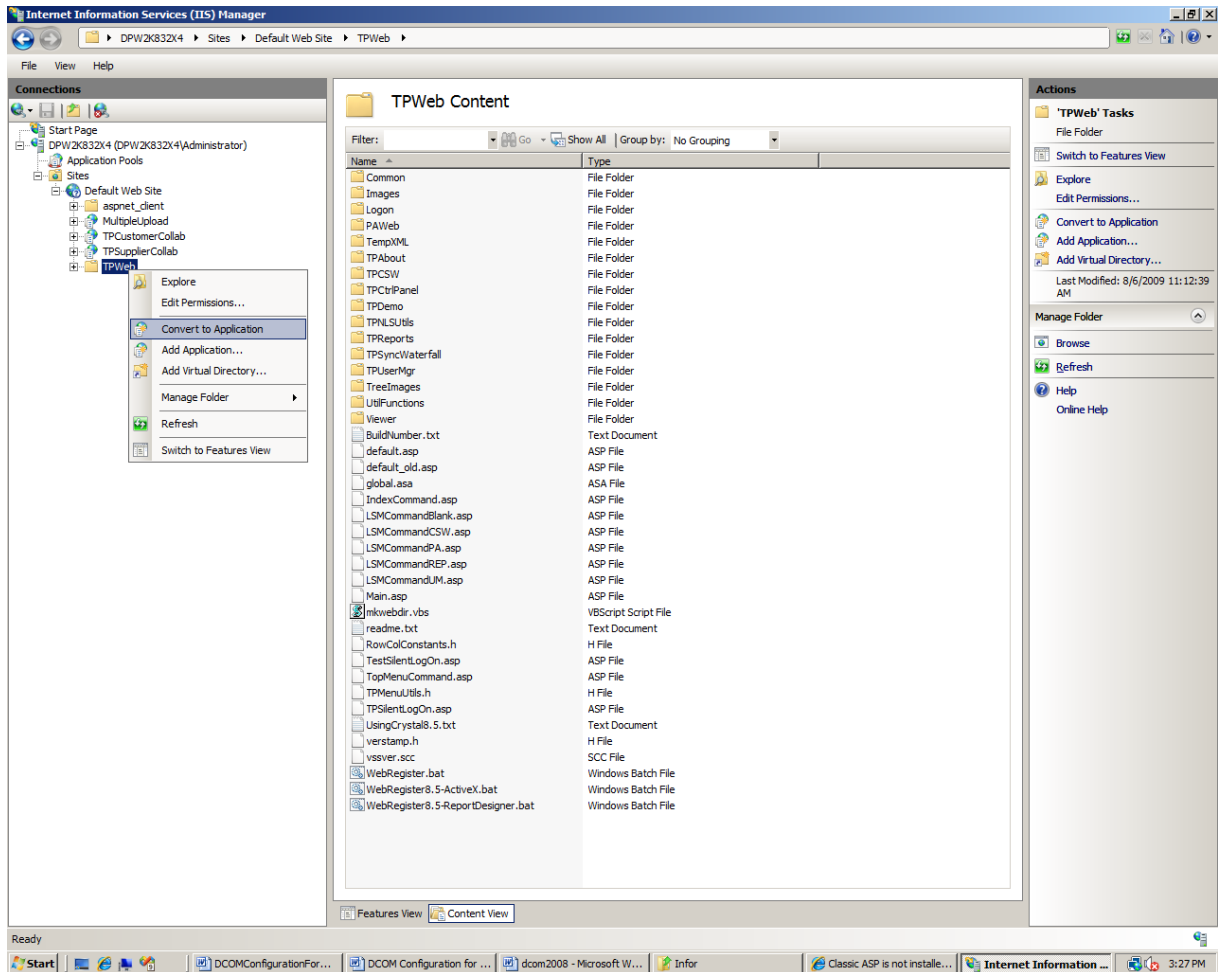
Also note, the TPWeb icon which is open list with globe behind to indicate IIS has registered TPWeb as a web site. If you see a folder icon before TPWeb instead as shown below:

Deploying Thru-Put 7.0 on Windows 2008 R2 Server

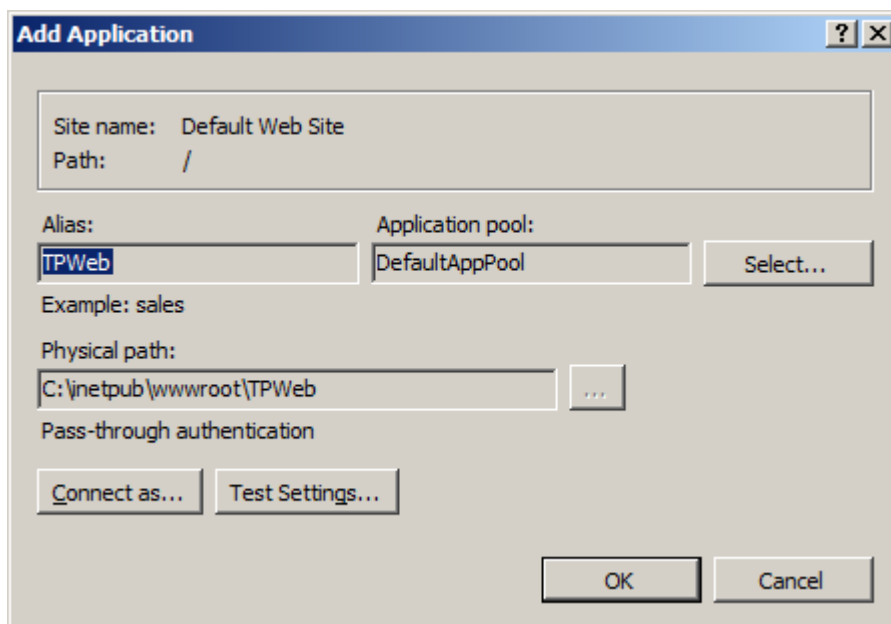


Right mouse click on **TPWeb** as shown below and execute “**Convert To Application**” menu option:

Deploying Thru-Put 7.0 on Windows 2008 R2 Server

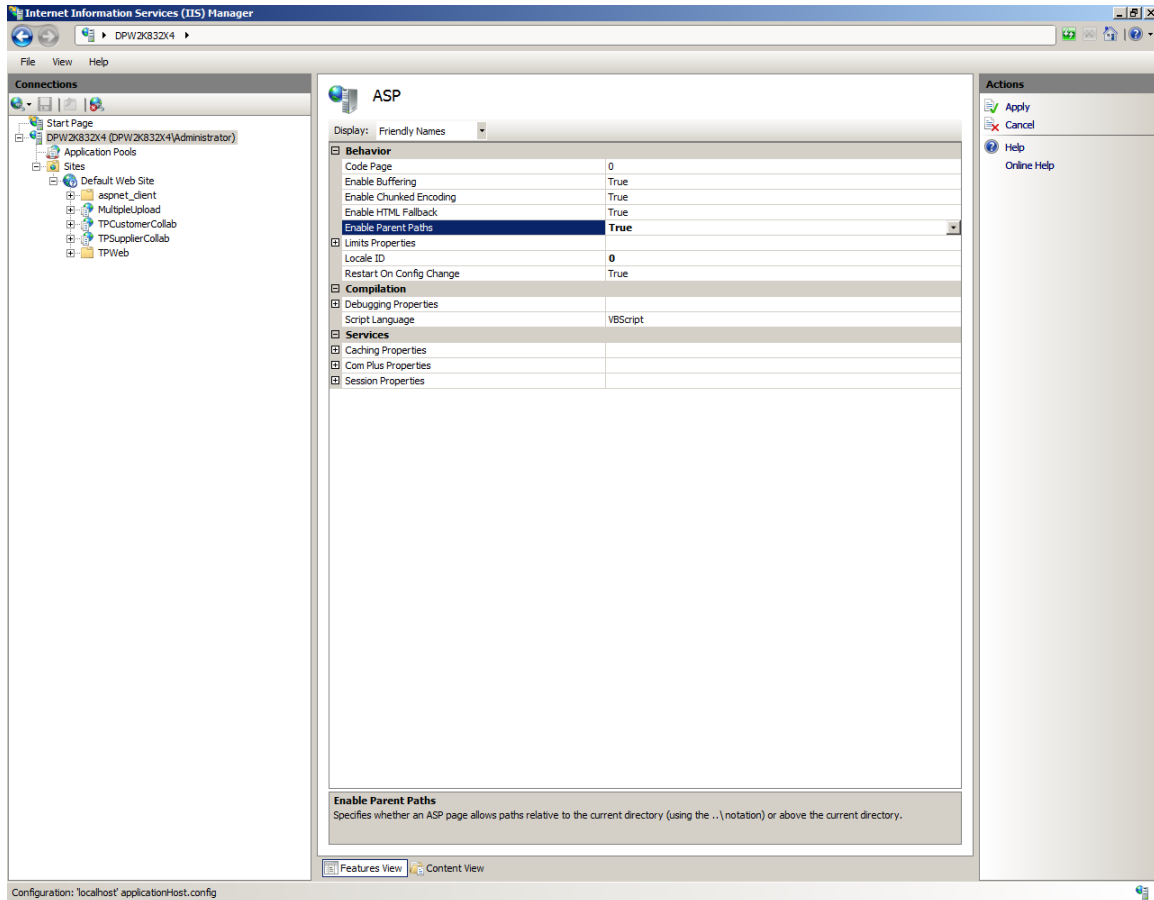


You will get the following dialog:



Leave all the defaults as is and click OK.

Next from the Features pane, double click on ASP icon. Change “**Enable Parent Path**” to “**Yes**” in the combo box. You should see the settings as shown below:

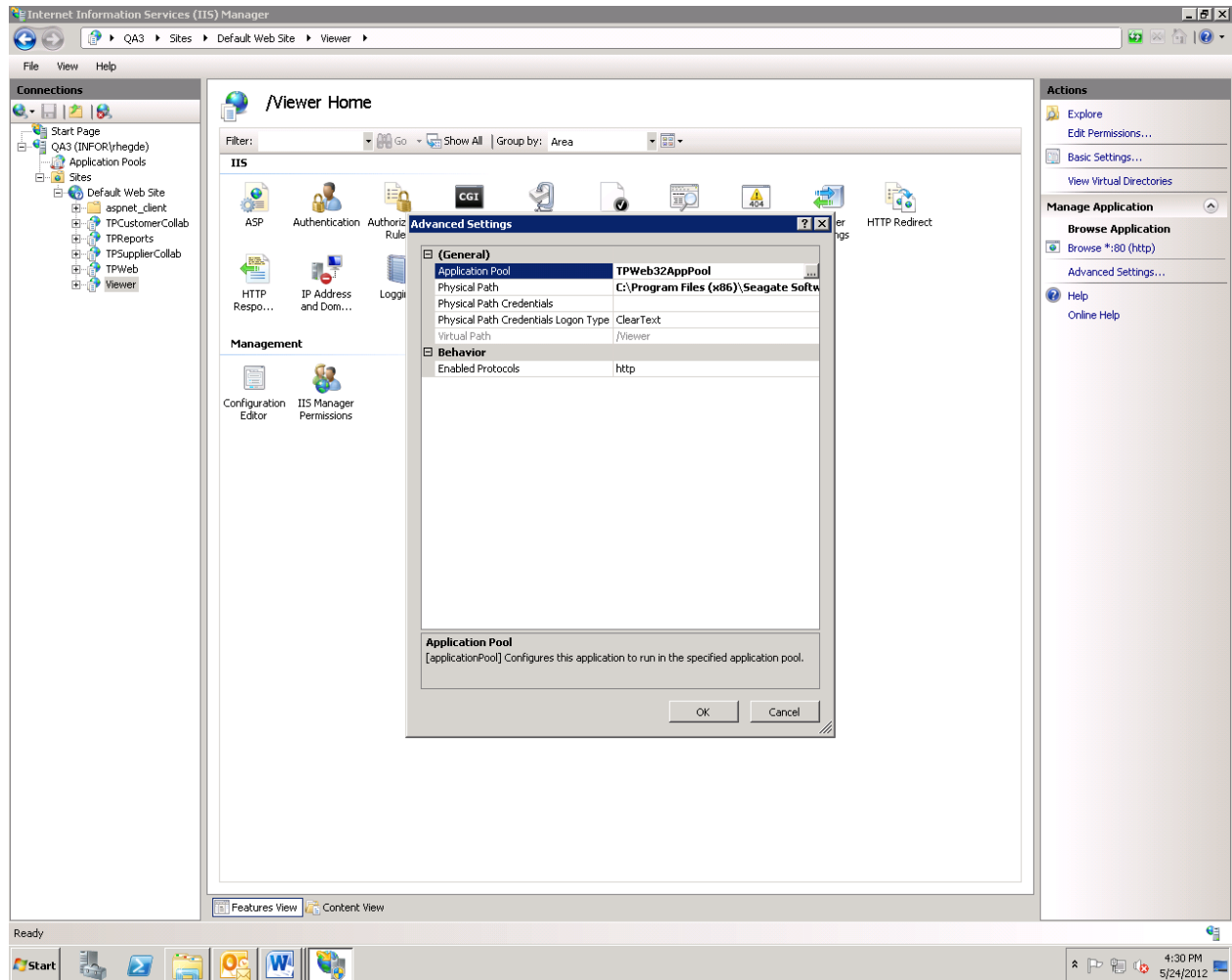


Configuring IIS to use Crystal 32 Viewer

Note: If you don't plan to use TPWeb Reports, you can ignore this section.

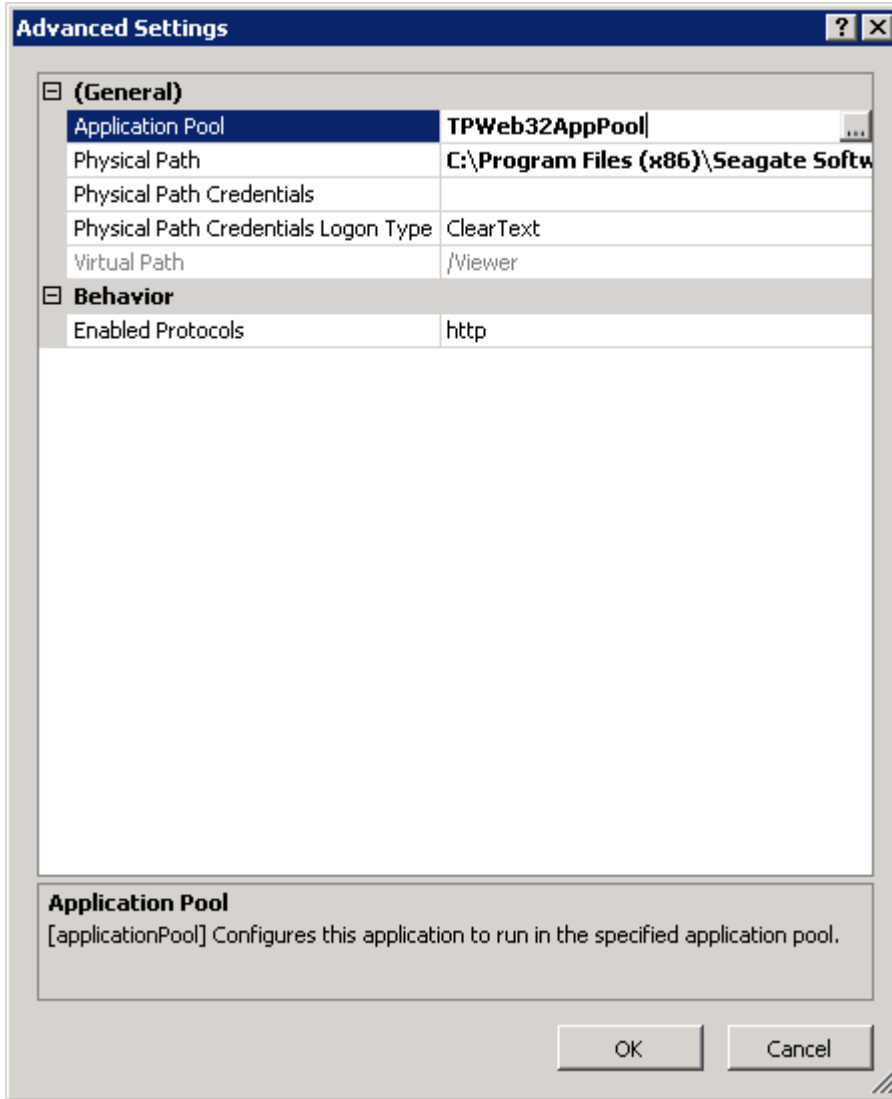
From the left pane, make sure Viewer is an application. In higher version of crystal this Application may be different. In Crystal 11 viewer for example, you will see the application as “**crystalreportviewers11**”. Make sure that the Viewer is an application (Globe icon). Right click on the viewer and choose Manage Application->Advanced Settings. You will see the screen as shown below:

Deploying Thru-Put 7.0 on Windows 2008 R2 Server



Change the Application pool to TpWeb32BitPool created earlier.

At this point, IIS configuration is complete. If you are successful, then you should be able to open internet explorer and goto <http://localhost/tpweb> and able to see TPWeb although it may give some error messages regarding DCOM configuration.



One last thing in setting up TPWeb

Note: If you don't plan to use Customer Service Workbench, you can ignore this section.

If you are using Thru-Put Customer Service workbench, then you also need to provide access to c:\inetpub\wwwroot\TPWeb\tempXML folder using Windows Explorer.

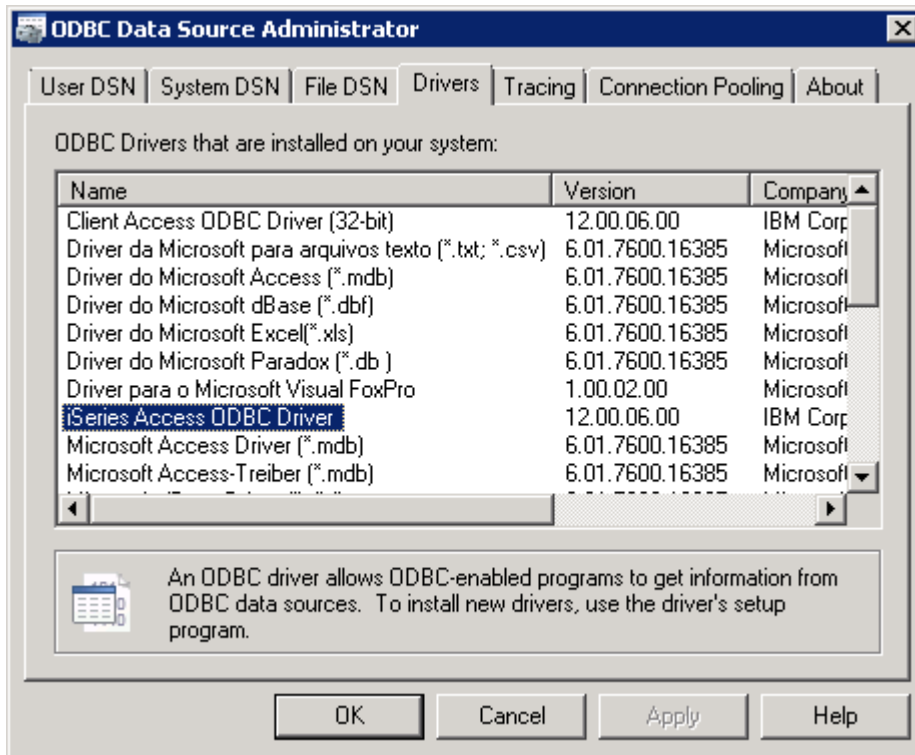
In Windows Explorer, locate the above folder and right mouse click to get to "Share" command and make "everyone" to have "Full Control". This folder is used for writing the "Waterfall Information" during quotation in Thru-Put Customer Service workbench.

Setting up IBM Client Access ODBC Driver

This section is applicable only if you are using XA ERP system (or any other which are hosted on I Series platform).

Thru-Put has been tested with IBM Client VR61

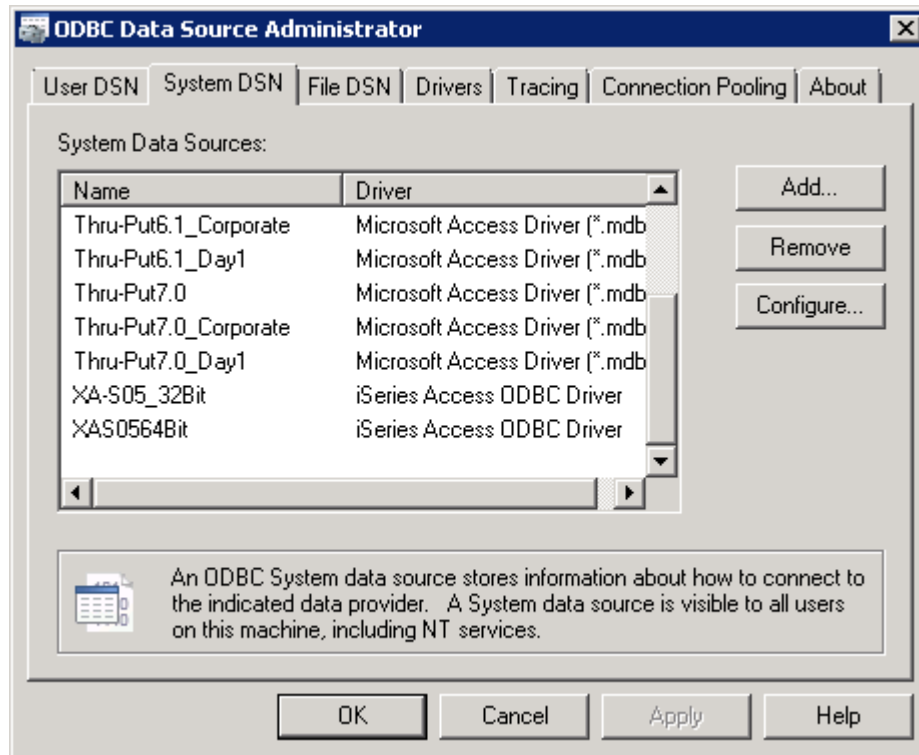
The driver version is highlighted in the screenshot below:



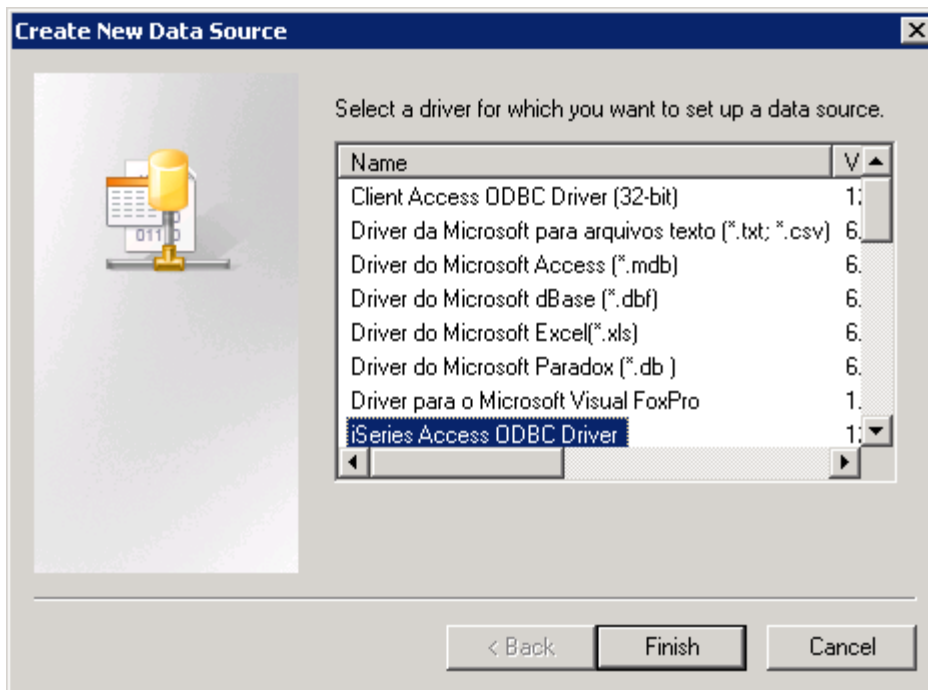
Setting up a new ODBC data source

From Windows 2008 R2, Start->Programs->IBM System I Access For Windows

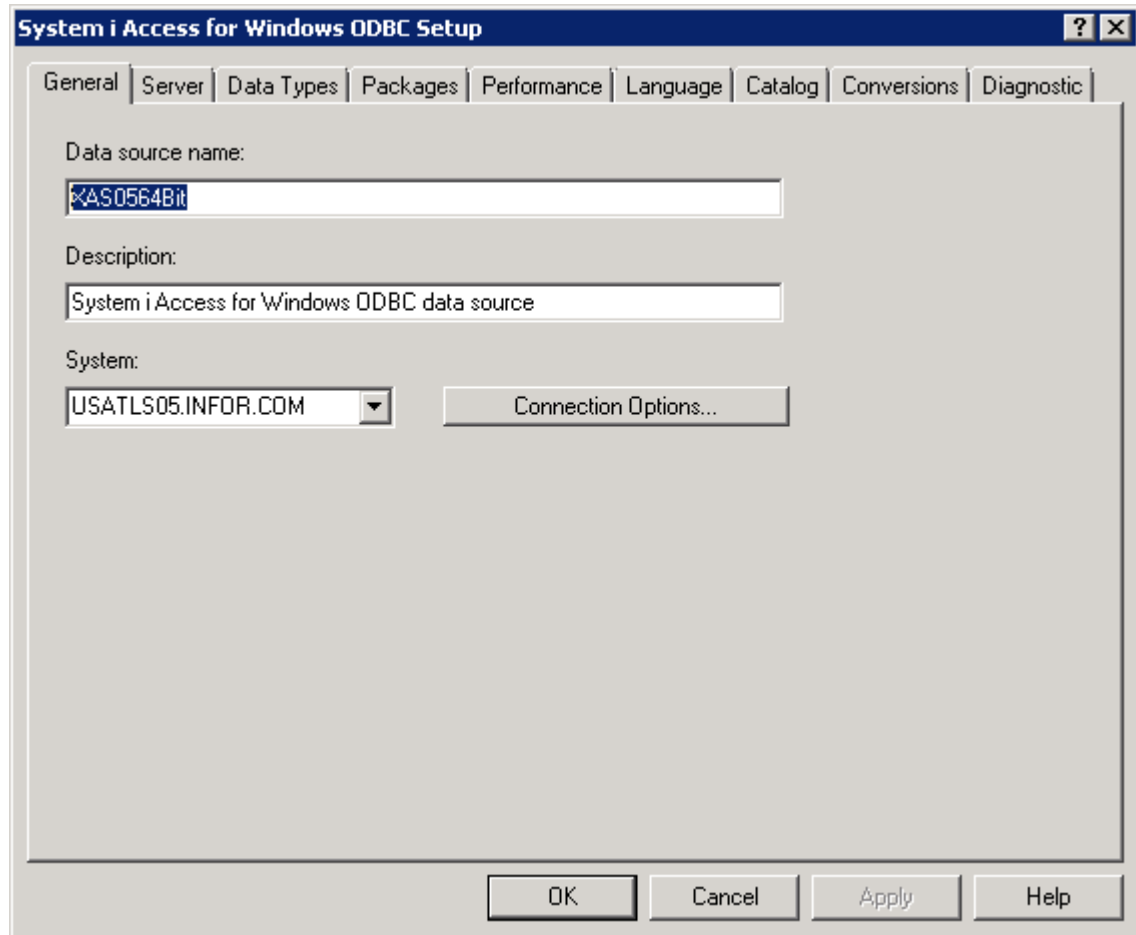
Run ODBC Administration. You will see a dialog as shown below. Click on the System DSN tab as shown below:



Click on 'Add' to add a new data source. From the ODBC Driver Admin, Add a new data source and choose the driver 'iSeries Access ODBC driver' as shown below.



You will see the following dialog:

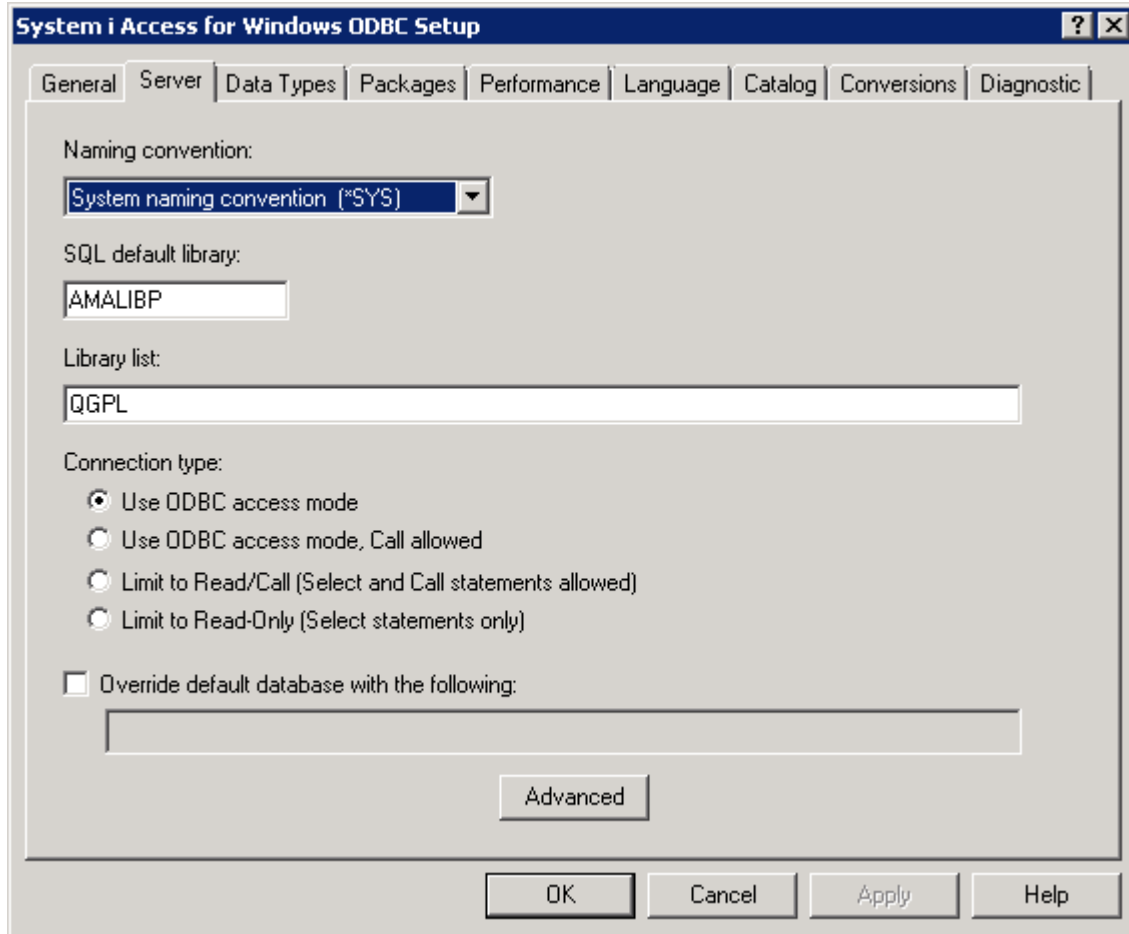


Enter the System pointing to your iSeries environment where XA is hosted. In the above example 'USATLS05.INFOR.COM' replace with the one you have configured.

For the Data source Name avoid blank, dash (-) or under score (_) in the name.

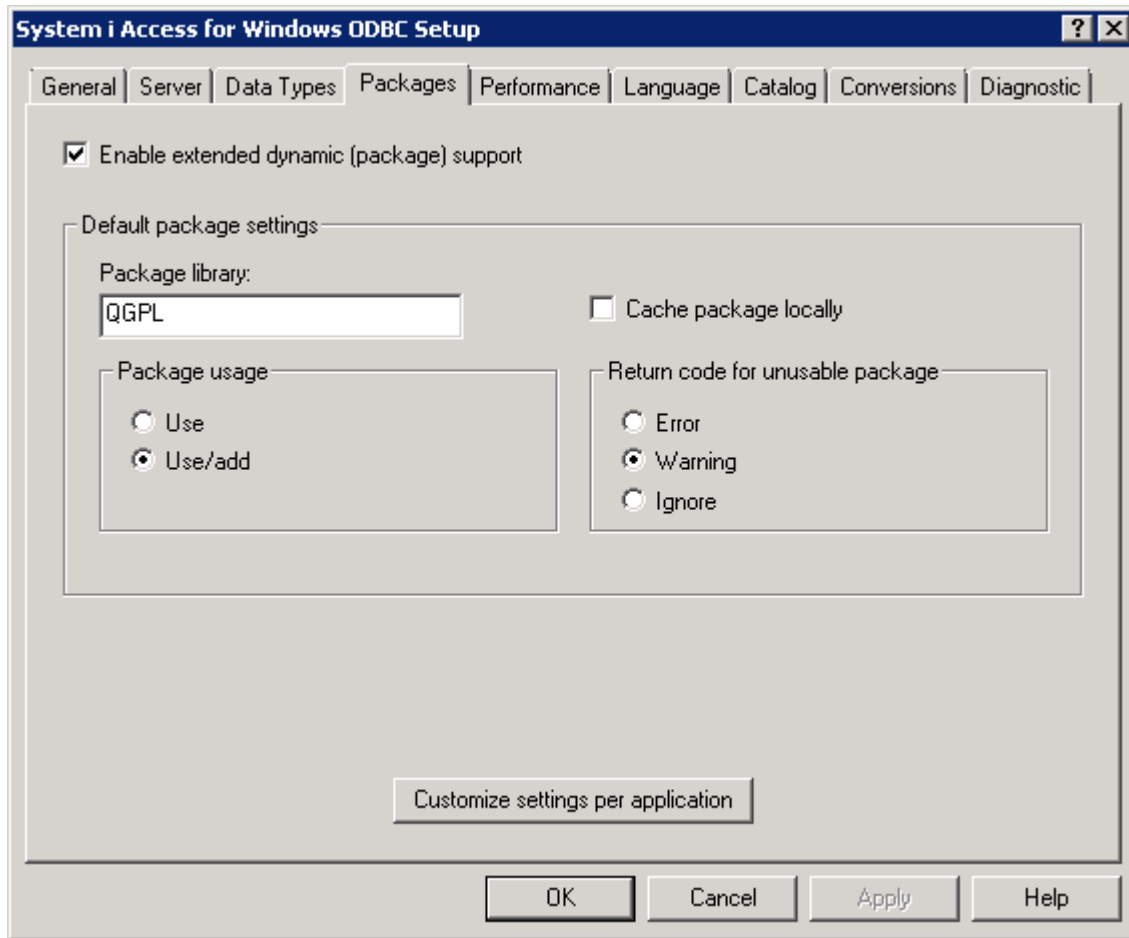
Click on the server tab as shown below:

Choose System Naming Convention and provide the default library. In the example below, it is entered as AMALIBP. Check with your admin the name to be provided in your environment.



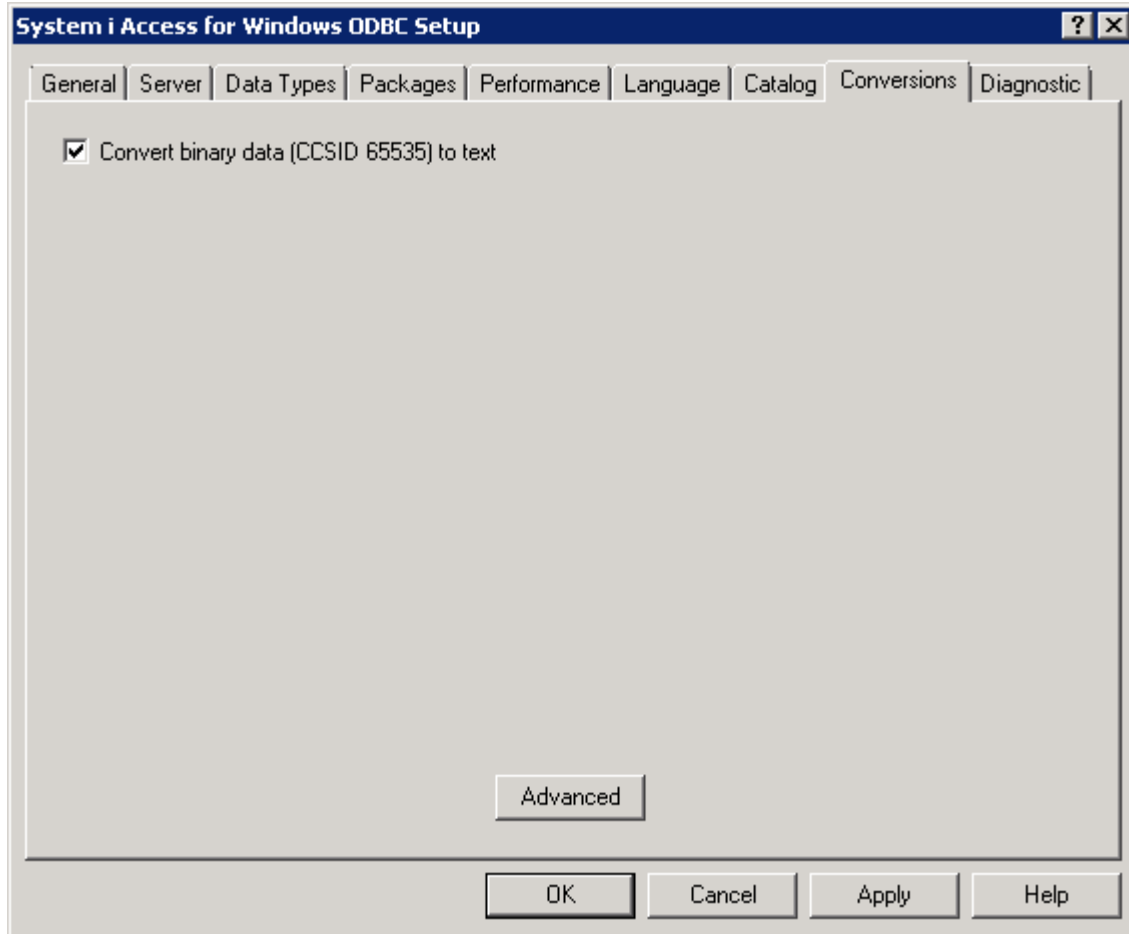
Click tab 'Packages'

The screen should like as shown below:



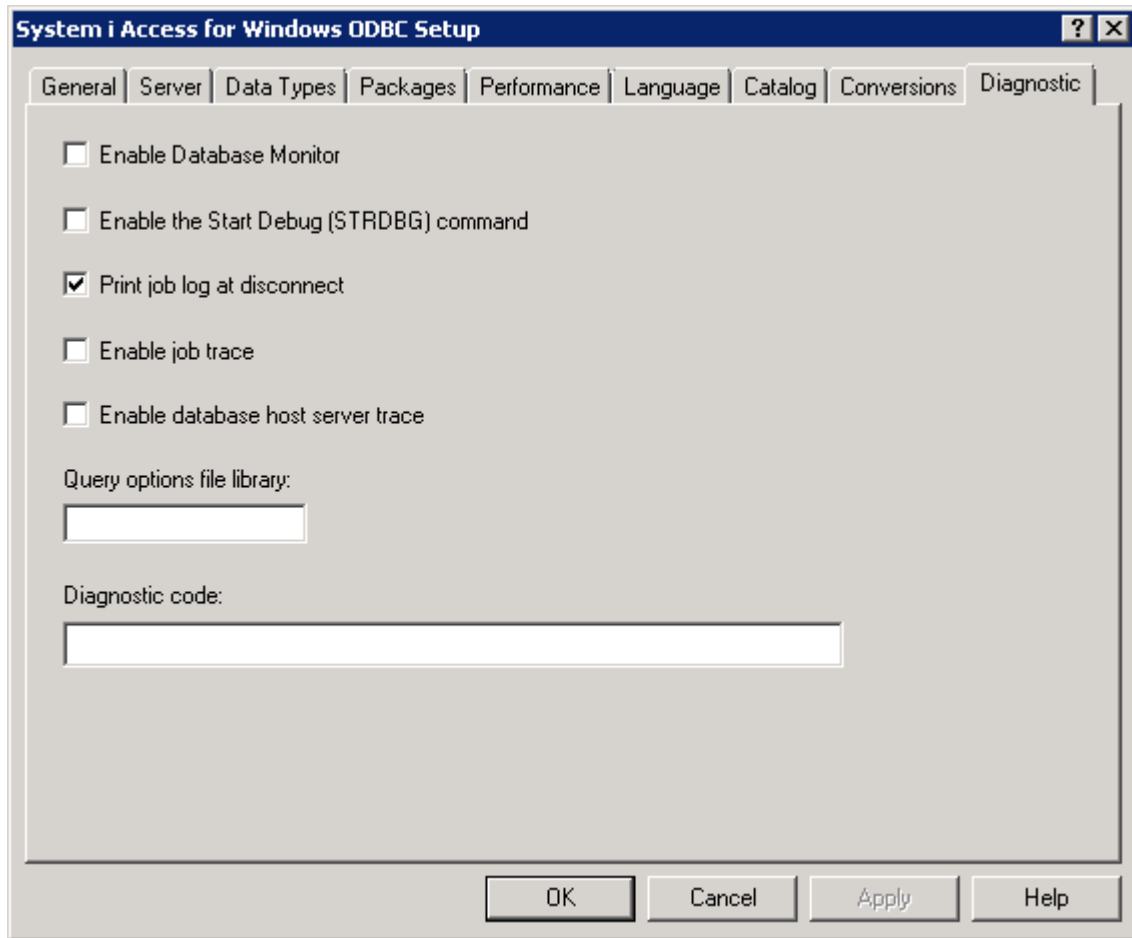
Click on Conversions

And make sure the configuration looks like the screen shot shown below;



Click on Diagnostics tab

And make sure it matches the screenshot shown below:



After setting up the data source

Please open ISeriesIntegration.ini and modify the file as shown below and save it:

[ODBC]

ISeriesDataSourceName=XAS0564Bit => change to your data source name

ISeriesUserId=an1 => Change to your environment

ISeriesPassword=909a23EE78CDF92412820CF3CDD871a2 => required only for TPWeb

ISeriesEnv=9P => Change to your environment

ISeriesWarehouse=KCC => Change to your environment

Deploying Thru-Put 7.0 on Windows 2008 R2 Server

ISeriesUnencryptedPassword=nine2five => Change to your environment

Make sure APSActive=1 (For Thru-Put) 0 for VPI

DownloadMode=1 (0 means test mode and putback will not upload)

Running Download and Scheduling (DbUtil.exe/ Resonance.exe)

Please remember to run DbUtil and Resonance.exe as Administrator. In Windows Explorer, Right mouse click on the executables and choose 'Run as Administrator'.