



VISUAL CADLink User Manual

Version 1.0

Copyright © 2015 Infor

Important Notices

The material contained in this publication (including any supplementary information) constitutes and contains confidential and proprietary information of Infor.

By gaining access to the attached, you acknowledge and agree that the material (including any modification, translation or adaptation of the material) and all copyright, trade secrets and all other right, title and interest therein, are the sole property of Infor and that you shall not gain right, title or interest in the material (including any modification, translation or adaptation of the material) by virtue of your review thereof other than the non-exclusive right to use the material solely in connection with and the furtherance of your license and use of software made available to your company from Infor pursuant to a separate agreement, the terms of which separate agreement shall govern your use of this material and all supplemental related materials ("Purpose").

In addition, by accessing the enclosed material, you acknowledge and agree that you are required to maintain such material in strict confidence and that your use of such material is limited to the Purpose described above. Although Infor has taken due care to ensure that the material included in this publication is accurate and complete, Infor cannot warrant that the information contained in this publication is complete, does not contain typographical or other errors, or will meet your specific requirements. As such, Infor does not assume and hereby disclaims all liability, consequential or otherwise, for any loss or damage to any person or entity which is caused by or relates to errors or omissions in this publication (including any supplementary information), whether such errors or omissions result from negligence, accident or any other cause.

Without limitation, U.S. export control laws and other applicable export and import laws govern your use of this material and you will neither export or re-export, directly or indirectly, this material nor any related materials or supplemental information in violation of such laws, or use such materials for any purpose prohibited by such laws.

Trademark Acknowledgements

The word and design marks set forth herein are trademarks and/or registered trademarks of Infor and/or related affiliates and subsidiaries. All rights reserved. All other company, product, trade or service names referenced may be registered trademarks or trademarks of their respective owners.

Publication Information

Release: VISUAL CADLink Version 1.0

Publication date: July 13, 2015

Contents

Overview 5

Launching CADLink..... 6

Bill of Materials Grid 7

Operations/Routing 9

BOM Changes..... 10

CAD System Document Properties..... 11

CADLink Messages..... 12

VISUAL Connection Settings..... 13

CADLink Configuration 14

Overview

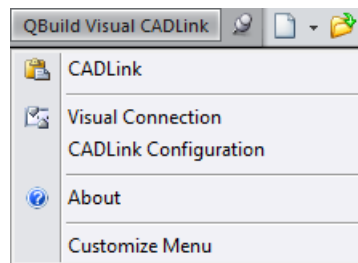
CADLink serves as a bridge between your Computer Aided Design (CAD) system and Infor VISUAL Manufacturing. It allows the user to automatically create, update, and modify Engineering Master (EM) and Part data within VISUAL.

Please note that CADLink uses a direct database connection to integrate with VISUAL. This means any changes saved by CADLink will bypass restrictions imposed by the VISUAL user interface. For example, CADLink can still write to fields that are restricted/locked out in VISUAL if the database still allows write access.

CADLink simplifies and streamlines the process of transferring engineering data between CAD and VISUAL. The purpose of this document is to outline the functions and features of CADLink. If any of your questions are not answered, please feel free to reach out to infor-support@qbuildsoftware.com for assistance.

Launching CADLink

CADLink can be launched directly from your CAD system toolbar, or as an external program. Upon launching, CADLink will begin to work with the current active CAD file open in your CAD system.



After launching, a CADLink splash screen will appear. In this screen, you can see CADLink examine the entire Bill of Material (BOM) structure of your active CAD file, as it also pulls Engineering Master (EM) and Part data from VISUAL.

Once it has completed this process, it will display the CADLink BOM Grid which highlights and compares the differences between the CAD BOM and VISUAL EMs.

Bill of Materials Grid

CADLink will open up to the BOM Grid after launching:

No	Part Number	Save	Revision	Part Description	BOM Qty	UOM	Product	P_M_T	Operation	Material	Mtl Description	Mtl UOM	Mtl Qty
1	MC-00126ASM-01	<input checked="" type="checkbox"/>	A	4 Dgt Mechanical Counter Assembly	1.00	EA	FG-CUSTOM	Manufacture					
1.1	CRT-00112ASM	<input checked="" type="checkbox"/>	A	Mechanical Advance Assembly	1.00	EA	FG-CUSTOM	Manufacture					
1.1.1	AL-00132ASM	<input checked="" type="checkbox"/>	A	Advance Latch Assembly (ERP)	1.00	EA	FG-CUSTOM	Manufacture	5				
1.1.1.1	AL-400291	<input checked="" type="checkbox"/>		Advance Latch, 4 Dgt	1.00	EA	SA	Manufacture	5				
1.1.1.2	SS-00012834	<input checked="" type="checkbox"/>		Spring, Steel Material 12834	1.00	GA	RM	Purchased					
1.1.1.3	CP-40000	<input checked="" type="checkbox"/>		Bot.1-1/2"	2.00	EA	PP	Purchased	5				
1.1.2	ALH-00123ASM	<input checked="" type="checkbox"/>	A	Advance Latch Housing Assembly	1.00	EA	FG-CUSTOM	Manufacture					
1.1.2.1	ASS-029311-001	<input checked="" type="checkbox"/>		Advance Spring Stud Black	2.00	GA	RM	Purchased					
1.1.2.2	AL-192912	<input checked="" type="checkbox"/>		Advance Latch Shaft, Steel Material 3123	1.00	GA	RM	Purchased					
1.1.2.3	ALH-4002917	<input checked="" type="checkbox"/>		Advance Latch Housing 4 Dgt	1.00	GA	RM	Purchased					
1.1.2.4	AP-0028434	<input checked="" type="checkbox"/>		Advance Pin, Steel Material 28434	1.00	GA	RM	Purchased					
1.1.2.5	RB-0078075	<input checked="" type="checkbox"/>		Resist. Bearing	1.00	GA	RM	Purchased					

In this screen, line items or fields may be highlighted in different colors to indicate differences between the CAD BOM and VISUAL EM. The default color scheme is described in 5 colors:

White: Part already exists in the VISUAL Part Master.

Green: Part does not exist in VISUAL, and will be created by CADLink after saving.

Grey: Part is not present on CAD BOM, and will be removed from VISUAL EM

Blue: Part is not present on CAD BOM, but will not be removed from VISUAL EM

Yellow: There is a discrepancy between CAD and VISUAL data, which is resolved after saving.

Right-clicking on a yellow field will open a small window showing the different pieces of data from CAD and VISUAL:

No	Part Number	Part Description	Opr Seq	Unit Qty	UOM	Class Code	Group Code	Part Type
1	08LCF01	LATCH-LIFT AND TURN/FLUSH MOUNT	0	1.00	EA	Hardware	Machine Part	Manufactured
1.1	X09087-1	100 Series Metric Pwnt	0	1.00	EA	Hardware	Fabricated Parts	Purchased
1.2	L45324	Latch	0	1.00	EA	Hardware	Machine Part	Manufactured
1.3	624009	62 series metric hardware	0	1.00	EA	Hardware	Fabricated Parts	Manufactured
1.4	N39676	Non Locking Chrome	0	1.00	EA	Hardware	Machine Part	Manufactured
1.5	X09087	100 Series Metric Pwnt	0	1.00	EA	Hardware	Machine Part	Purchased

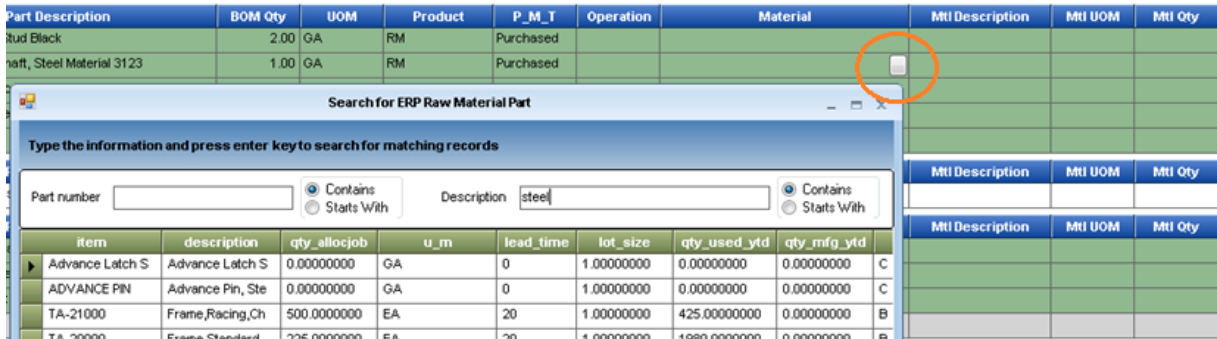
CAD description : Non Locking Chrome Assembly
ERP description : Non Locking Chrome

The user can select a description to use, or type a new description that CADLink will write to both the CAD system and VISUAL.

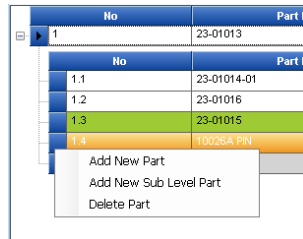
Important Part data such as Part ID, Description, Revision, etc. will also be exposed in this grid.

- VISUAL-specific fields such as Unit of Measure and Product Code can be assigned for new parts.
- Some data cannot be changed for existing parts, such as UOM.

Raw materials can be assigned directly through the CADLink interface. Right-clicking on the Material column and selecting 'Add Material' will open a search window into your VISUAL Part master. There, you can search for the correct raw material by Part ID or Description, and then provide a quantity in the Mtl Qty column.



Similar to raw materials, line items can be added to the VISUAL EM manually without modelling them in your CAD. Right-clicking on a blue square on the far left of a line item will open a menu to add new Parts.



Adding a new part will create an empty row in the selected level or sub-level. Right clicking on the Part Number column for this row will provide the option to open the part search window (same as raw materials). A quantity can then be typed into the BOM Qty column for the selected part.

No	Part Number
1.1	23-01014-01
1.2	23-01016
1.3	23-01015
1.4	10026A PIN
1.5	23-01014
1.6	

Grey rows (parts to be removed from the EM) can be converted into Manual Parts by opening the Manual Parts menu on that line item.

The Save column can be used to ignore changes to specific line items in CADLink. When you save the EM, CADLink will ignore any lines where the Save checkbox is deselected. This is helpful for transferring long lead-time items into VISUAL even if the full design is not yet complete.

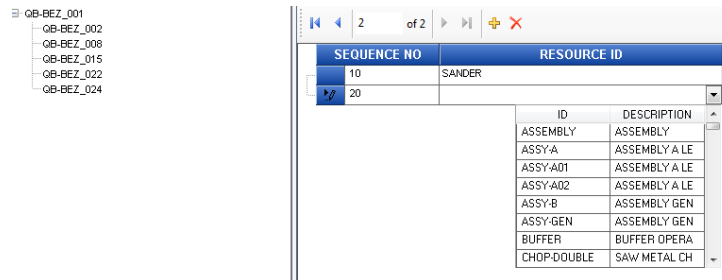
Save	Rd
<input checked="" type="checkbox"/>	000
<input checked="" type="checkbox"/>	D
<input checked="" type="checkbox"/>	C
<input checked="" type="checkbox"/>	F

Operations/Routing

CADLink facilitates the assignment of operations and routing through the Operations tab.

For existing parts, the operations and operation sequences will be loaded from VISUAL.

For new parts, a sequence template can be loaded from your CADLink settings, which can then be edited for each specific part. Alternatively, the routing sequence can be created by individual resources.



The available operations are taken directly from your VISUAL database.

After you have finished assigning operations to the sequence, you can material cards to Resources from the BOM Grid tab:

10	▼	1.0000	SUBASSY	METAL
SEQUENCE NO	RESOURCE ID			
10	ASSEMBLY			
20	CNC-OP2			
30	MACH-MTL			
40	PAINT-B			
50	FINAL-ASSY			

BOM Changes

The BOM changes tab is a snapshot summary of the changes CADLink will be making upon saving. It is read-only, but updates live as you make changes in the BOM Grid and Operations tabs.

	PART	DESCRIPTION	CAD QTY	ERP QTY	OPSEQ	ERP OPSEQ	NOTES
Bills of Materials	MC-8812AS8-01						
Operations							
	CIT-8812AS8	Mechanical Advance Assembly	1	0			Insert to Bill of Material.
BOM Changes	HW-81231AS8	Numbering Wheel 4Digits Assembly	1	0			Create New Part and Insert to Bill of Material.
	HW-17382AS8	Numbering Wheel Housing Assembly	1	0			Create New Part and Insert to Bill of Material.
CAD System Document Properties	AS-81928P	Counter Advance Spring	2	0			Create New Part and Insert to Bill of Material.
	CIT-8812AS8						
CADLink Messages	ALH-8812AS8	Advance Latch Housing Assembly	1	0			Create New Part and Insert to Bill of Material.

This tab is particularly useful for record keeping purposes, or if you are making minor changes to a large assembly.

CAD System Document Properties

The CAD properties tab is another read-only tab. It is simply a window into the CAD properties of the active CAD file, to avoid jumping between CADLink and your CAD system frequently.

Current CAD Properties			
Property Category - Custom (10 Items)			
No	Property Name	Property Value	Property Raw Value
1	PartNo	AL-400291	AL-400291
2	Description	Advance Latch, 4 Digit	Advance Latch, 4 Digit
3	Revision	2	2
4	Material	6504-040	6504-040
5	Product_Code	GENERIC	GENERIC
6	Commodity_code	COMPONENT	COMPONENT
7	ABC_CODE	A	A
8	Length	20	20
9	Width	5	5
10	UNIT_OF_MEASURE	- none -	- none -

To make changes to these properties, you must save new properties using CADLink or exit and change them manually in the CAD system.

CADLink Messages

CADLink Messages is an important validation step. Here, you will be notified of any warnings or errors.

Warning: Alerts the user of a low-impact issue.

e.g. Description exceeds character limit and will be truncated

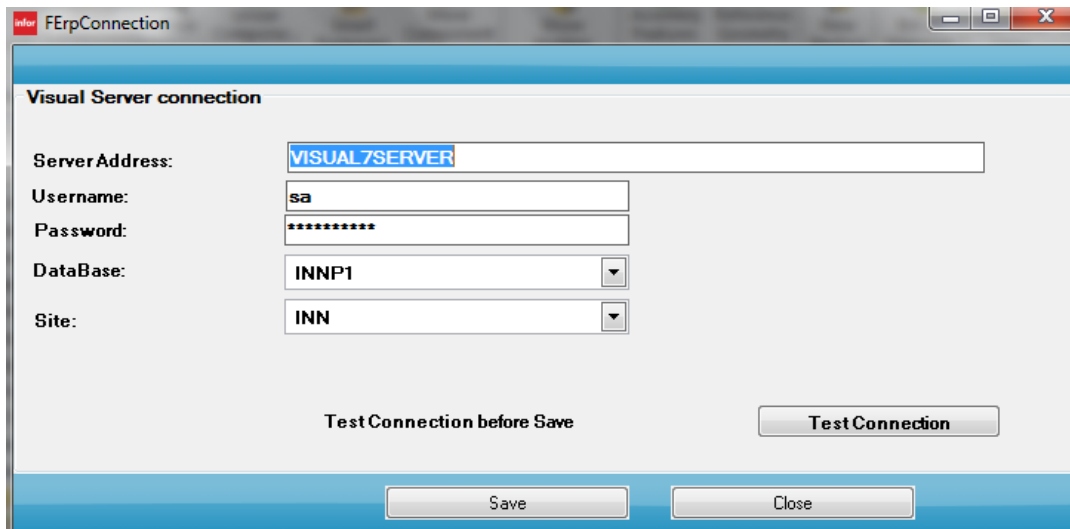
Error: A more serious issue where the save function is disabled to preserve data integrity

e.g. A part cannot have the same Part Number as its parent

VISUAL Connection Settings

CADLink connects to your VISUAL database using a direct database connection.

The connection can be set up in the VISUAL Connection Settings. Use the Test Connection button to confirm that the information entered is valid.



The screenshot shows a dialog box titled "FErpConnection" with a blue header. The main area is titled "Visual Server connection" and contains the following fields:

- Server Address:** A text box containing "VISUAL7SERVER".
- Username:** A text box containing "sa".
- Password:** A text box containing "*****".
- DataBase:** A dropdown menu with "INNPI" selected.
- Site:** A dropdown menu with "INN" selected.

At the bottom of the dialog, there are three buttons: "Test Connection before Save" (text only), "Test Connection" (a button), "Save" (a button), and "Close" (a button).

CADLink Configuration

The CADLink Configuration settings allow you to choose field mappings, color-coding, and Item templates.

Field Mapping: These are used to define where CADLink should search to find part data, such as Part Number, Part Description, Revision, etc. from your CAD files. Your VISUAL Part UOM and Raw Material UOM are written to your CAD properties.

Color Codes: Choose the color scheme CADLink uses to highlight fields in the user interface

Other Settings: General settings for the CADLink interface.

