



---

# Trans4m OnRamp Installation and Configuration

Installation and Configuration



## **Copyright © 2016 Infor**

### **Important Notices**

The material contained in this publication (including any supplementary information) constitutes and contains confidential and proprietary information of Infor.

By gaining access to the attached, you acknowledge and agree that the material (including any modification, translation or adaptation of the material) and all copyright, trade secrets and all other right, title and interest therein, are the sole property of Infor and that you shall not gain right, title or interest in the material (including any modification, translation or adaptation of the material) by virtue of your review thereof other than the non-exclusive right to use the material solely in connection with and the furtherance of your license and use of software made available to your company from Infor pursuant to a separate agreement, the terms of which separate agreement shall govern your use of this material and all supplemental related materials ("Purpose").

In addition, by accessing the enclosed material, you acknowledge and agree that you are required to maintain such material in strict confidence and that your use of such material is limited to the Purpose described above. Although Infor has taken due care to ensure that the material included in this publication is accurate and complete, Infor cannot warrant that the information contained in this publication is complete, does not contain typographical or other errors, or will meet your specific requirements. As such, Infor does not assume and hereby disclaims all liability, consequential or otherwise, for any loss or damage to any person or entity which is caused by or relates to errors or omissions in this publication (including any supplementary information), whether such errors or omissions result from negligence, accident or any other cause.

Without limitation, U.S. export control laws and other applicable export and import laws govern your use of this material and you will neither export or re-export, directly or indirectly, this material nor any related materials or supplemental information in violation of such laws, or use such materials for any purpose prohibited by such laws.

### **Trademark Acknowledgements**

The word and design marks set forth herein are trademarks and/or registered trademarks of Infor and/or related affiliates and subsidiaries. All rights reserved. All other company, product, trade or service names referenced may be registered trademarks or trademarks of their respective owners.

### **Publication Information**

Release: TRANS4M Release 10.1

Publication date: January 6, 2016

# Contents

Contents .....	4
About this guide .....	5
Intended audience .....	5
Related documents .....	5
Infor ION documents .....	5
Documents related to ION integrations .....	5
Contacting Infor.....	6
Chapter 1 Background .....	7
Chapter 2 Setting Up the Intermediate Database. ....	9
Prerequisites.....	9
Get Database Scripts .....	9
Create the Intermediate Database .....	9
Create Tables with Version 1 scheme .....	12
Update Tables to Version 3 scheme .....	13
Chapter 3 Install the OnRamp .....	15
Prerequisites.....	15
Chapter 4 Configure the OnRamp .....	19
Setup Connections .....	19
Unidata .....	20
Intermediate Database .....	21
Logs .....	21
Update Log Settings.....	21
OnRamp Event Viewer.....	22
Increasing number of event messages stored.....	24
Chapter 5 Managing the OnRamp Service.....	27
Start from OnRamp Configuration program. ....	27
Start the service from the Windows Services program. ....	28
Change Startup Type .....	28

## About this guide

This guide provides installation and configuration information for the Infor TRANS4M OnRamp. This document describes configuration requirements and provides setup instructions.

## Intended audience

This guide is intended for the system administrator or consultant who configures Infor TRANS4M for use with ION. Before you read this guide, ensure that you are familiar with the other guides listed in “Related documents.”

## Related documents

You can find the documents in the product documentation section of the Infor Xtreme Support portal, as described in “Contacting Infor” on page 6.

### ***Infor ION documents***

For more information about Infor ION, see these documents:

*Infor ION Connect Administration Guide*

*Infor ION Process Administration Guide*

*Infor ION Installation Guide*

### ***Documents related to ION integrations***

*Trans4m Release 10.0 Setup and Installation Guide*

*Trans4m Release 10.1 Installation Guide*

*Infor10x ION Administration*

*Infor10x ION Installation Guides*

## Contacting Infor

If you have questions about Infor products, go to the Infor Xtreme Support portal at [www.infor.com/inforxtreme](http://www.infor.com/inforxtreme).

If we update this document after the product release, we will post the new version on this Web site. We recommend that you check this Web site periodically for updated documentation.

If you have comments about Infor documentation, contact [documentation@infor.com](mailto:documentation@infor.com).

# Chapter 1 Background

1

ION is designed to send and retrieve BOD (Business Object Documents) data between Infor products. It assumes that the product is based on a relational database. Trans4m uses Unidata which is a multi-valued database. The ODBC drivers provided by RocketSoftware do not support all the functions required by ION. For these reasons the Trans4m OnRamp Service was created.

It was designed to move BODs between a Trans4m server and an intermediate (relational) database. The ION installation would then interact with the intermediate database.



---

## Chapter 2 Setting Up the Intermediate Database.

# 2

**Note:** Existing intermediate databases must be upgraded to version 3 scheme.

**Note:** You will need a separate database for each account

### ***Prerequisites***

- Windows Server 2008 R2 or above
- Existing MSSql 2008 or above
- SQL Server Management Studio
- ION 11.1 or above

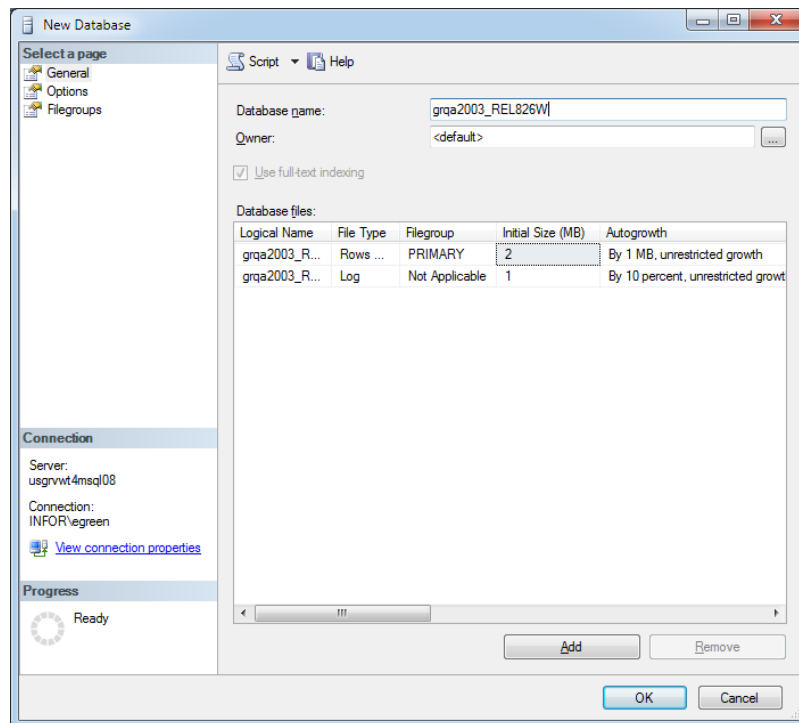
### ***Get Database Scripts***

- 1 Login to your ION Desk.
- 2 Navigate to Configure > ION Service.
- 3 Click on Configuration Files tab.
- 4 Click Download Scripts to create I/O Box button.
- 5 Select local folder and enter “scripts” as the filename and click Save.
- 6 Click OK.
- 7 Unzip downloaded file.

### ***Create the Intermediate Database***

- 1 Connect to your MSSql server using Microsoft SQL Server Management Studio.
- 2 Right Click the Databases node and select New Database...

**3** Enter in the database name.



**4** Click OK.

**5** Create a new Sql Login.

- a** On the Sql Server itself, expand the Security Node.
- b** Right Click the Logins node.

c Click New Login.

Login - New

Script Help

Select a page

- General
- Server Roles
- User Mapping
- Securables
- Status

Connection

Server: usgrvwt4msql08

Connection: INFOR\egreen

[View connection properties](#)

Progress

Ready

Login name:  Search...

☒ Windows authentication  
☐ SQL Server authentication

Password:

Confirm password:

☐ Specify old password

Old password:

☒ Enforce password policy  
☒ Enforce password expiration  
☒ User must change password at next login

☐ Mapped to certificate   
☐ Mapped to asymmetric key   
☐ Map to Credential  Add...

Credential	Provider
------------	----------

Remove

Default database: master

Default language: <default>

OK Cancel

d Enter in Login name.

e Select desired authentication.

f Click OK.

6 Associate the new login to the new database.

a Expand the new database.

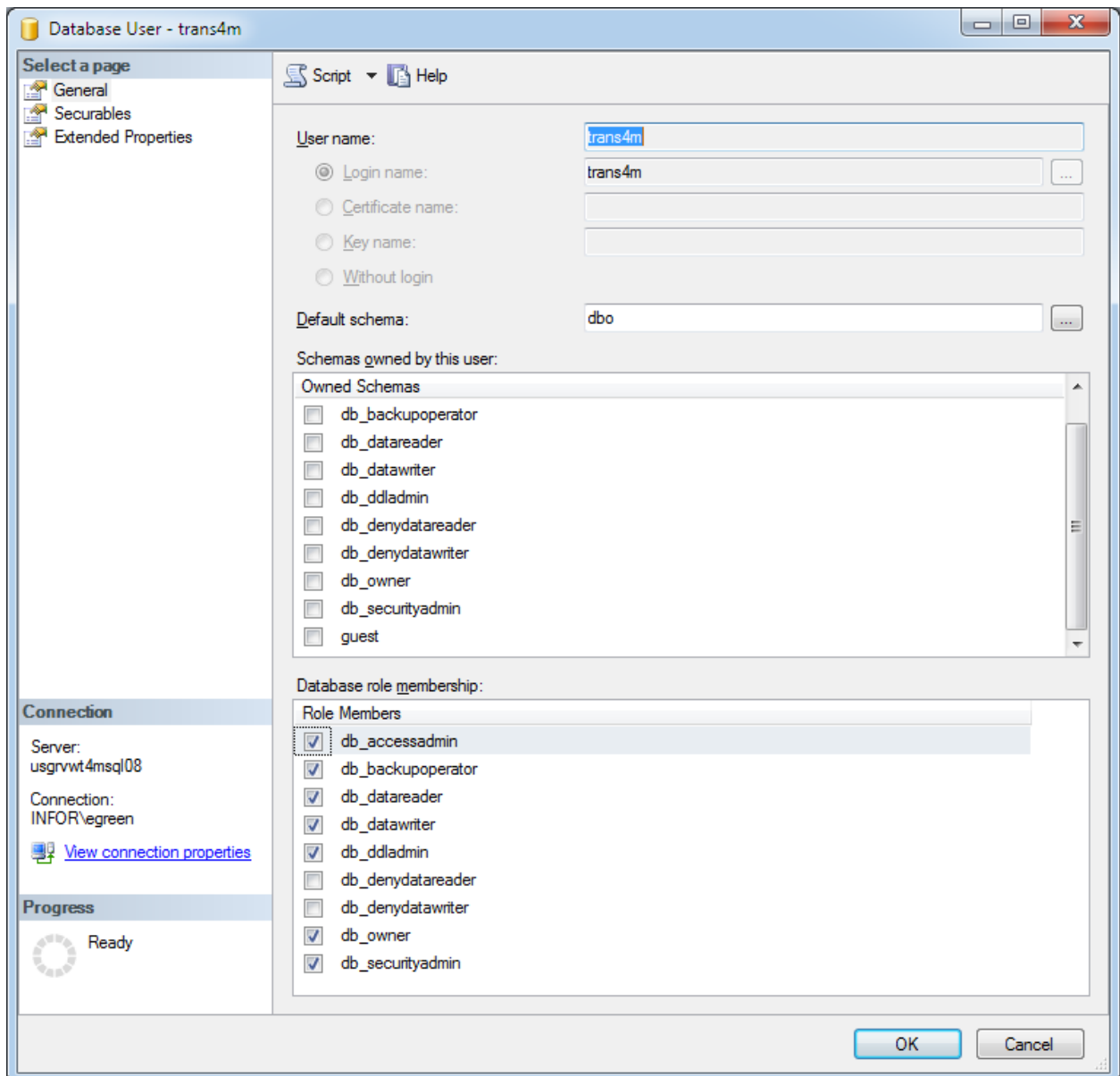
b Expand Security.

c Right Click Users.

d Select New User...

e Enter in User name.

- f Enter in Login name created above:
- g Setup the Database role membership data as shown:

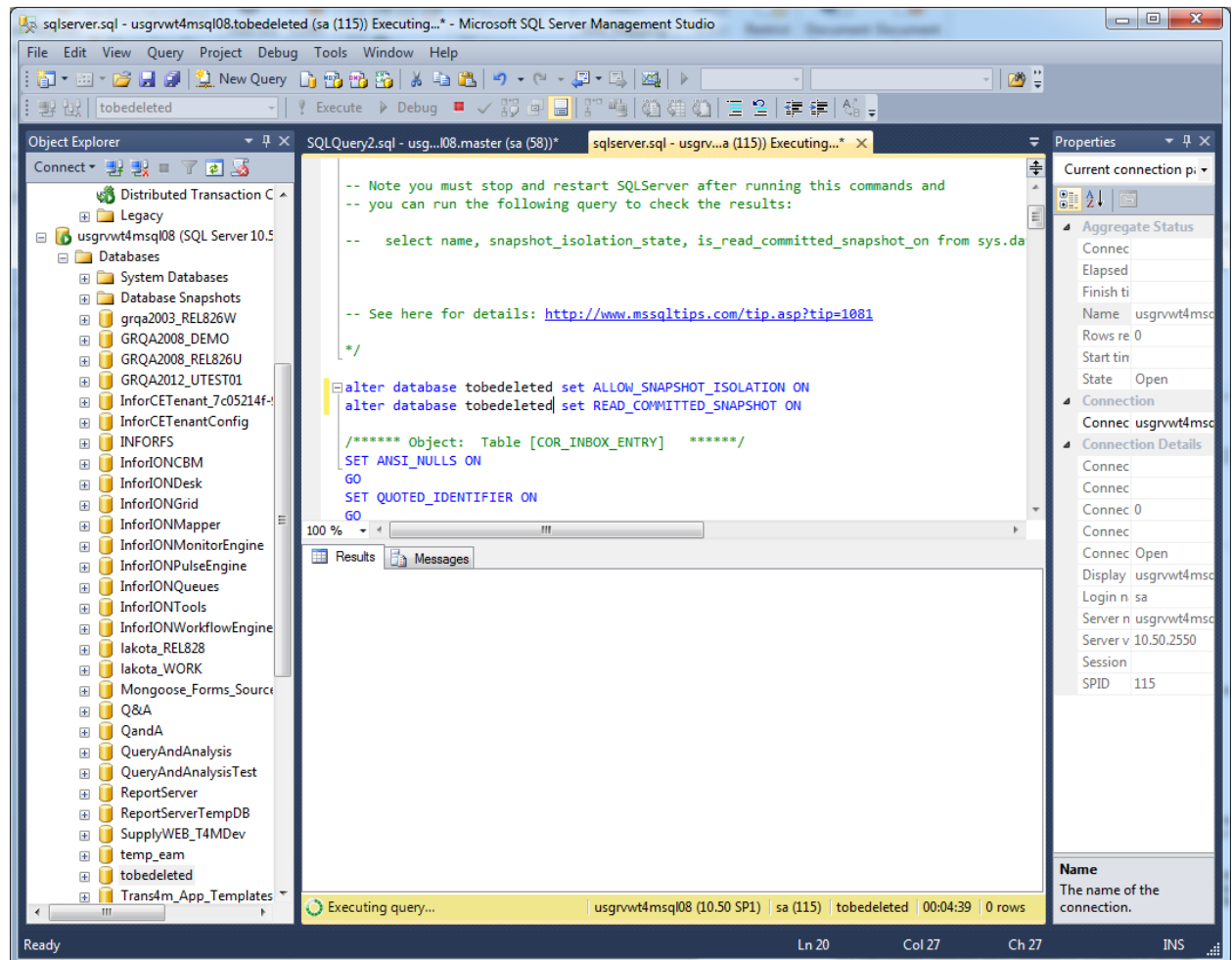


- h Click Ok.

### **Create Tables with Version 1 scheme**

- 1 Connect to your MSSql server using Microsoft SQL Server Management Studio.
- 2 Click On File, Open, File.
- 3 Navigate to the sql scripts\1.0.0 folder you acquired above.
- 4 Select the sqlserver.sql file, and click Open.

## 5 Make sure the new database is in the drop down list.



- 6 Follow any notes at the top of the sql file especially if it directs to edit the alter database statement.
- 7 Click Execute.
- 8 The ION tables should now exist in the new database.

## Update Tables to Version 3 scheme

- 1 Connect to your MSSql server using Microsoft SQL Server Management Studio.
- 2 Click On File, Open, File.
- 3 Navigate to the sql scripts\3.0.0 folder you acquired above.
- 4 Select the sqlserver\_upgrade.sql file, and click Open.
- 5 Make sure the database is in the drop down list.

- 6 Click Execute.
- 7 The ION tables should now exist in the new database.

---

## Chapter 3 Install the OnRamp

# 3

**Caution:** If the service is already installed you may need to uninstall it prior to installing a new version.

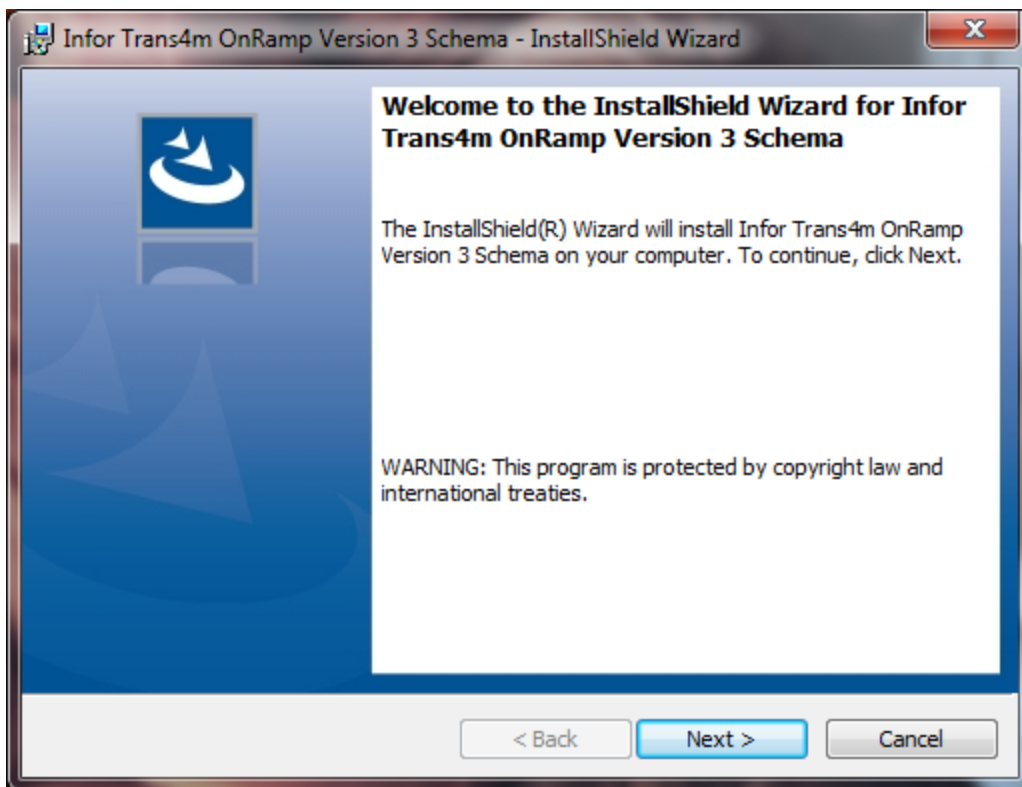
**Caution:** The new version of the OnRamp requires .Net Framework 4.5.1.

---

### ***Prerequisites***

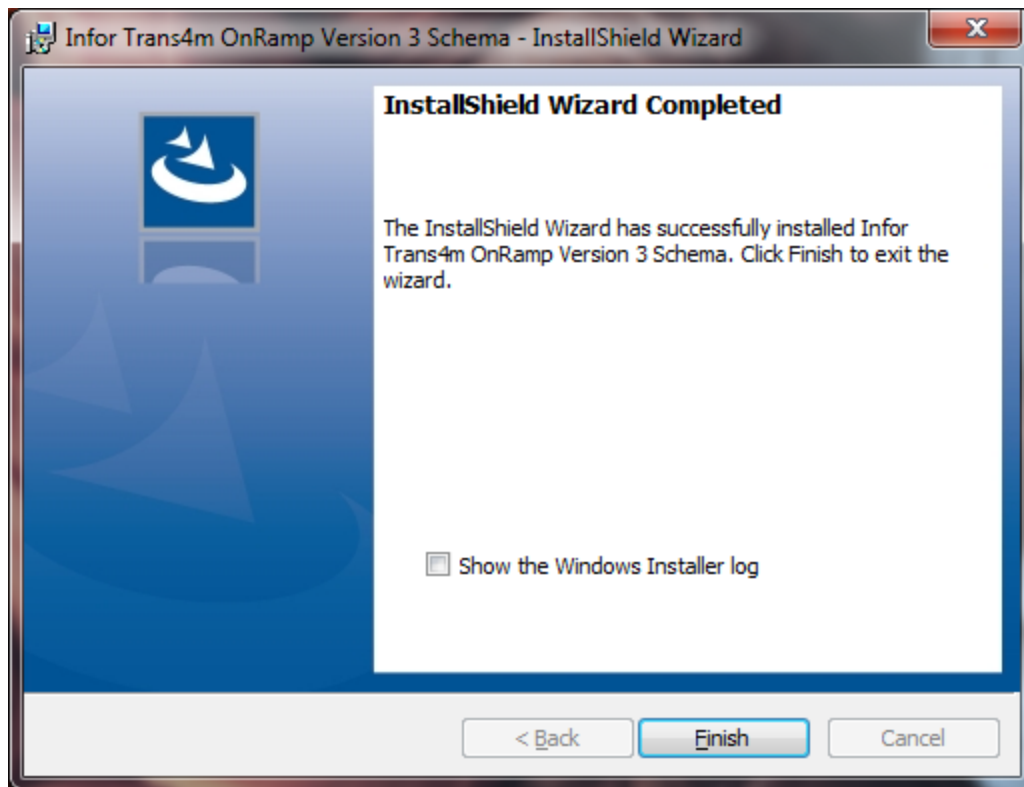
- Windows Server 2008 R2 or above
  - .Net Framework 4.5.1
  - MsSql Native Client
  - Existing ION 11.X or above installation
  - Intermediate Database setup from above.
  - Trans4m 10.1 or above
- 
- 1 Download the Infor Trans4m ION OnRamp setup file from Infor Xtreme. The newest version will be on KB 1530411.
  - 2 Double-Click the TRANS4MOnRampSetup.exe file.
  - 3 If prompted by the User Account Control, Click **Yes**.

- 4 Click **Next** to start the installation.



- 5 If prompted by the User Account Control, Click **Yes**.

6 Click Finish.





## Chapter 4 Configure the OnRamp

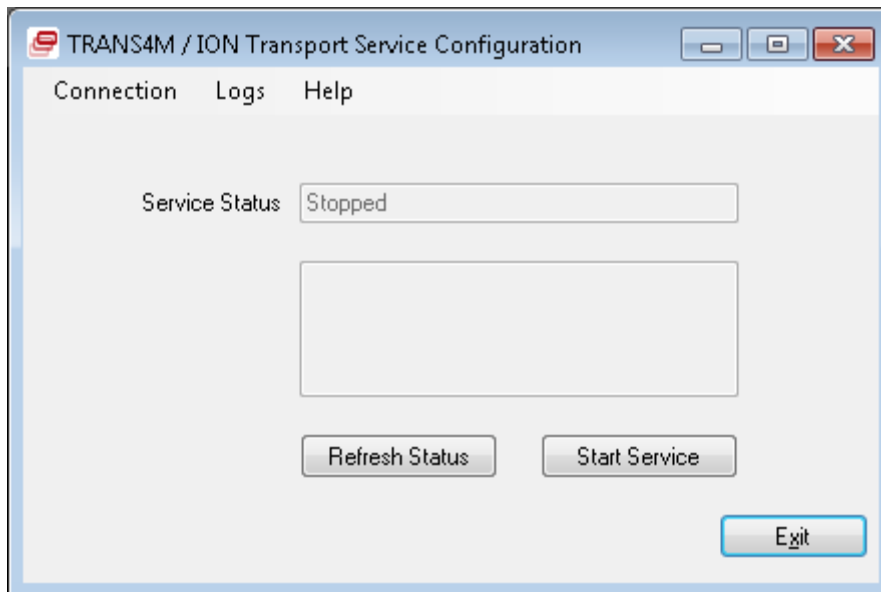
# 4

**Caution:** The OnRamp service must be configured before it is started. When the service is installed it is set to start automatically.

The Onramp service was designed to move BODs to and from Trans4m (Unidata) accounts to their associated intermediate MSSql databases. ION can then move the BODs between ION and the intermediate database.

### Setup Connections

- 1 As an admin user Select **Start>All Programs>Infor> TRANS4M OnRamp Configuration Editor**. Click **Yes** if a UAC prompt is displayed.
- 2 The main configuration form will be displayed.



- 3 Create a connection for each account.
  - a Click Connection, New Connection

- b** The following screen will appear. Enter in the required data.

Maintain Connections

Connection ID  Load

Connection ID \*  ☐ Enabled

Pull Interval \*  seconds

UniData

Server \*  Login \*

Database Name \*  Password \*

Connection String  Records To Process \*

Intermediate Database

Connection Type \* MSSQL

Server \*  Login \*

Database Name \*  Password \*

Connection String  Records To Process \*

Delete Test Connection OK Cancel

### **CONNECTION ID**

Enter in a connection ID. This will be used in the logs to identify which connection the message is associated with.

### **ENABLED**

Check this box to make the connection enabled. If desired, connections can be setup but not enabled until needed by leaving this unchecked. If no enabled connections exist the service will exit and have to be manually started once an enabled connection exists.

### **PULL INTERVAL**

Enter in a number in seconds. This will control how often messages are checked.

## **Unidata**

---

### **SERVER**

Enter in the Unidata server name.

### **DATABASE NAME**

Enter in the database name.

### **CONNECTION STRING**

Enter in the connection string if needed by this account.

### **LOGIN**

Enter in the login for this connection.

**PASSWORD**

Enter in the password for this connection.

**RECORDS TO PROCESS**

Enter in the number of records to process at a time

### ***Intermediate Database***

---

**CONNECTION TYPE**

Select MSSql from drop down.

**SERVER**

Enter in database server name

**DATABASE NAME**

Enter in database name created above.

**CONNECTION STRING**

Enter in connection string if needed.

**Note:** This will be appended to the connection string that is built from above information. This will normally not be needed.

**LOGIN**

Enter in login to database server created above.

**PASSWORD**

Enter in password to database server.

**RECORDS TO PROCESS**

Enter in number of records to process at a time.

**TEST CONNECTION**

Click this to test if connection settings are correct.

Click **OK** to save.

### ***Logs***

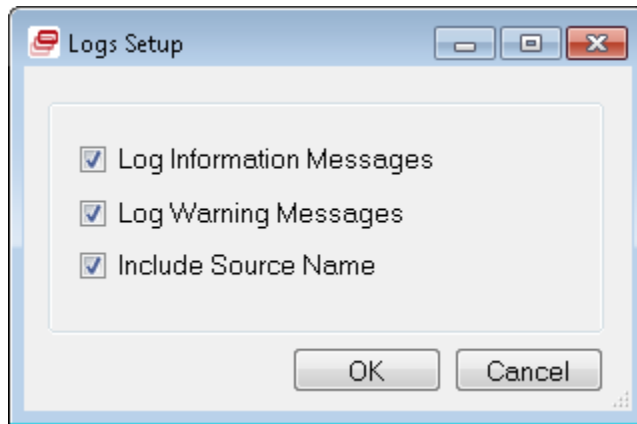
The OnRamp stores log data in a custom Windows Event Viewer log, Infor.

### ***Update Log Settings***

---

- 1 From the main form, click Logs, Log Settings.

- a The following form will appear.



### **LOG INFORMATION MESSAGES**

Check this to include information type messages in the log. Once the service is up and running properly this can be unchecked to minimize the amount of messages logged.

### **LOG WARNING MESSAGES**

Check this to include warning type messages in the log. It is recommended to leave this checked.

### **INCLUDE SOURCE NAME**

Check this to include where in the service the error occurred. It is recommended to leave this checked.

**Note:** Error type messages are always recorded in the log.

---

## ***OnRamp Event Viewer***

- 1 From the main form, click Logs, Log Settings.

## 2 The following form will display:

The screenshot shows the 'OnRamp Events' window. At the top, there are filters for 'Start Date Time' and 'End Date Time', both set to '1/ 6/2016' and '9:50:22 AM'. To the right, there are checkboxes for 'Information', 'Warning', and 'Error', all of which are checked. Below these are buttons for 'Filter', 'Remove Filter', and 'Reload Log Data'. The main area is a table with columns: Index, Entry Type, TimeGenerated, and Message. The table contains 2101 records, with the first few rows visible. The 'Entry Type' column has values like 'Information' and 'Warning'. The 'Message' column contains detailed log messages. At the bottom, it says 'Displaying 2101 of 2101 Records' and there is a 'Close' button.

Index	Entry Type	TimeGenerated	Message
259362	Information	12/8/2015 7:37 AM	Source: GetOutboxRecordsToTransfer in T4MIONConnect.Entities.dll Message: lakota - WORK : Getting outbox information from U
259361	Warning	12/8/2015 7:37 AM	Source: ProcessInboxData in T4MIONConnect.Entities.dll Message: usgrvwt4msql08 - lakota_WORK : No unprocessed records w
259360	Information	12/8/2015 7:37 AM	Source: ProcessInboxData in T4MIONConnect.Entities.dll Message: lakota - WORK : Start moving data from intermediate database
259359	Warning	12/8/2015 7:37 AM	Source: GetOutboxRecordsToTransfer in T4MIONConnect.Entities.dll Message: lakota - WORK : No records were found from COF
259358	Information	12/8/2015 7:37 AM	Source: GetOutboxRecordsToTransfer in T4MIONConnect.Entities.dll Message: lakota - WORK : Getting outbox information from U
259357	Warning	12/8/2015 7:37 AM	Source: ProcessInboxData in T4MIONConnect.Entities.dll Message: usgrvwt4msql08 - GRQA2008_DEMO : No unprocessed reco
259356	Information	12/8/2015 7:37 AM	Source: ProcessInboxData in T4MIONConnect.Entities.dll Message: usgrvwt4msql08 - GRQA2008_DEMO : Start moving data from intermedia
259355	Warning	12/8/2015 7:37 AM	Source: GetOutboxRecordsToTransfer in T4MIONConnect.Entities.dll Message: usgrvwt4msql08 - GRQA2008_DEMO : No records were four
259354	Information	12/8/2015 7:37 AM	Source: GetOutboxRecordsToTransfer in T4MIONConnect.Entities.dll Message: usgrvwt4msql08 - GRQA2008_DEMO : Getting outbox inform
259353	Warning	12/8/2015 7:37 AM	Source: ProcessInboxData in T4MIONConnect.Entities.dll Message: usgrvwt4msql08 - lakota_WORK : No unprocessed records w
259352	Information	12/8/2015 7:37 AM	Source: ProcessInboxData in T4MIONConnect.Entities.dll Message: lakota - WORK : Start moving data from intermediate database
259351	Warning	12/8/2015 7:37 AM	Source: GetOutboxRecordsToTransfer in T4MIONConnect.Entities.dll Message: lakota - WORK : No records were found from COF
259350	Information	12/8/2015 7:37 AM	Source: GetOutboxRecordsToTransfer in T4MIONConnect.Entities.dll Message: lakota - WORK : Getting outbox information from U
259349	Warning	12/8/2015 7:37 AM	Source: ProcessInboxData in T4MIONConnect.Entities.dll Message: usgrvwt4msql08 - lakota_WORK : No unprocessed records w
259348	Information	12/8/2015 7:37 AM	Source: ProcessInboxData in T4MIONConnect.Entities.dll Message: lakota - WORK : Start moving data from intermediate database
259347	Information	12/8/2015 7:37 AM	Source: MoveToArchive in T4MIONConnect.Entities.dll Message: lakota - WORK : Moving item (Sync.SupplierPartyMaster*IONSV
259346	Information	12/8/2015 7:37 AM	Source: MoveToArchive in T4MIONConnect.Entities.dll Message: lakota - WORK : Moving item (Sync.SupplierPartyMaster*IONSV
259345	Information	12/8/2015 7:37 AM	Source: MoveToArchive in T4MIONConnect.Entities.dll Message: lakota - WORK : Moving item (Sync.SupplierPartyMaster*IONSV
259344	Information	12/8/2015 7:37 AM	Source: MoveToArchive in T4MIONConnect.Entities.dll Message: lakota - WORK : Moving item (Sync.SupplierPartyMaster*IONSV
259343	Information	12/8/2015 7:37 AM	Source: MoveToArchive in T4MIONConnect.Entities.dll Message: lakota - WORK : Moving item (Sync.SupplierPartyMaster*IONSV
259342	Information	12/8/2015 7:37 AM	Source: MoveToArchive in T4MIONConnect.Entities.dll Message: lakota - WORK : Moving item (Sync.SupplierPartyMaster*IONE
259341	Information	12/8/2015 7:37 AM	Source: MoveToArchive in T4MIONConnect.Entities.dll Message: lakota - WORK : Moving item (Sync.SupplierPartyMaster*IONE
259340	Information	12/8/2015 7:37 AM	Source: MoveToArchive in T4MIONConnect.Entities.dll Message: lakota - WORK : Moving item (Sync.SupplierPartyMaster*IONE
259339	Information	12/8/2015 7:37 AM	Source: MoveToArchive in T4MIONConnect.Entities.dll Message: lakota - WORK : Moving item (Sync.SupplierPartyMaster*IONE
259338	Information	12/8/2015 7:37 AM	Source: MoveToArchive in T4MIONConnect.Entities.dll Message: lakota - WORK : Moving item (Sync.SupplierPartyMaster*ION00
259337	Information	12/8/2015 7:37 AM	Source: MoveToArchive in T4MIONConnect.Entities.dll Message: lakota - WORK : Moving item (Sync.SupplierPartyMaster*ION00
259336	Information	12/8/2015 7:37 AM	Source: MoveToArchive in T4MIONConnect.Entities.dll Message: lakota - WORK : Moving item (Sync.SupplierPartyMaster*ION00

### START DATE TIME

Select the earliest date and time of messages to display.

### END DATE TIME

Select the latest date and time of messages to display.

### INFORMATION

If checked Information type messages will be displayed when the Filter button is pressed.

### WARNING

If checked warning type messages will be displayed when the Filter button is pressed.

### ERROR

If checked error type messages will be displayed when the Filter button is pressed.

### **FILTER**

Click to filter the loaded messages.

### **REMOVE FILTER**

Click to show all messages.

### **RELOAD LOG DETAILS**

Click to load any new event messages.

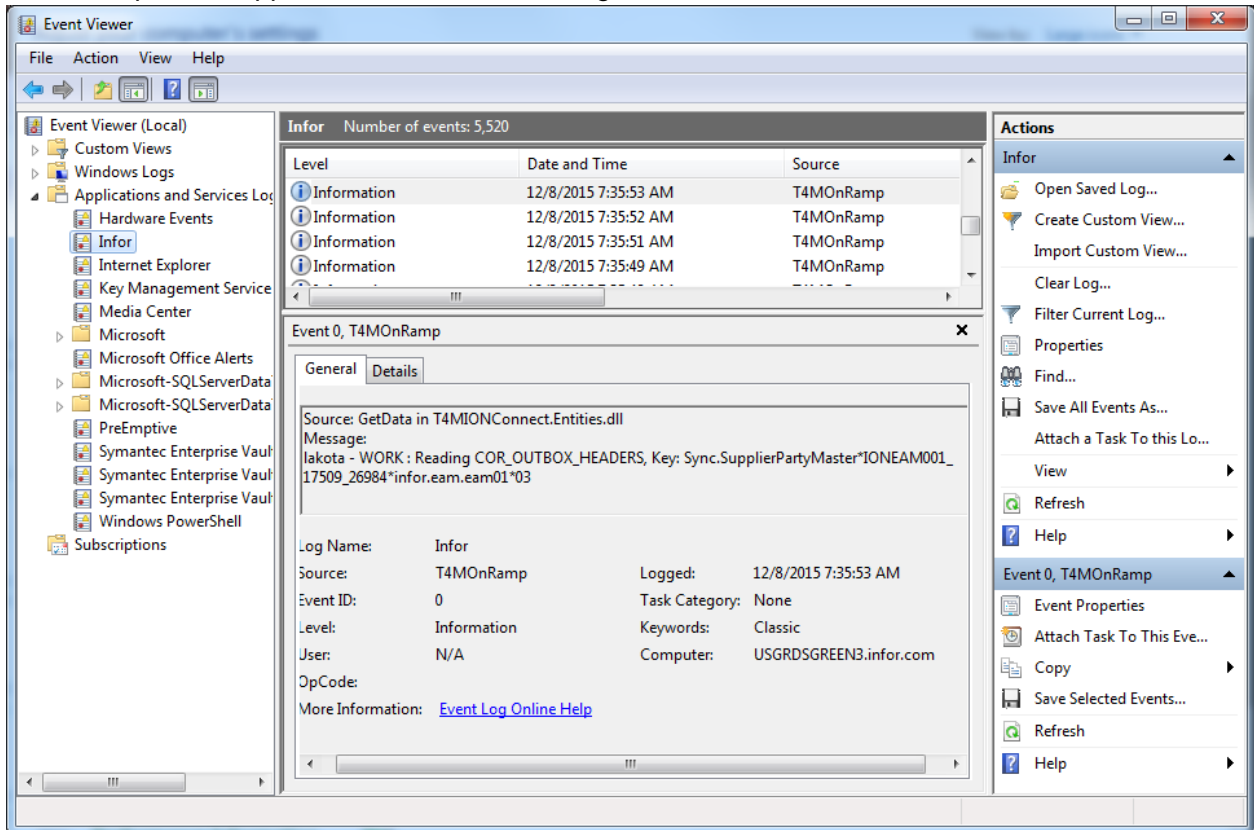
### **CLOSE**

Click to *Close* to close the form.

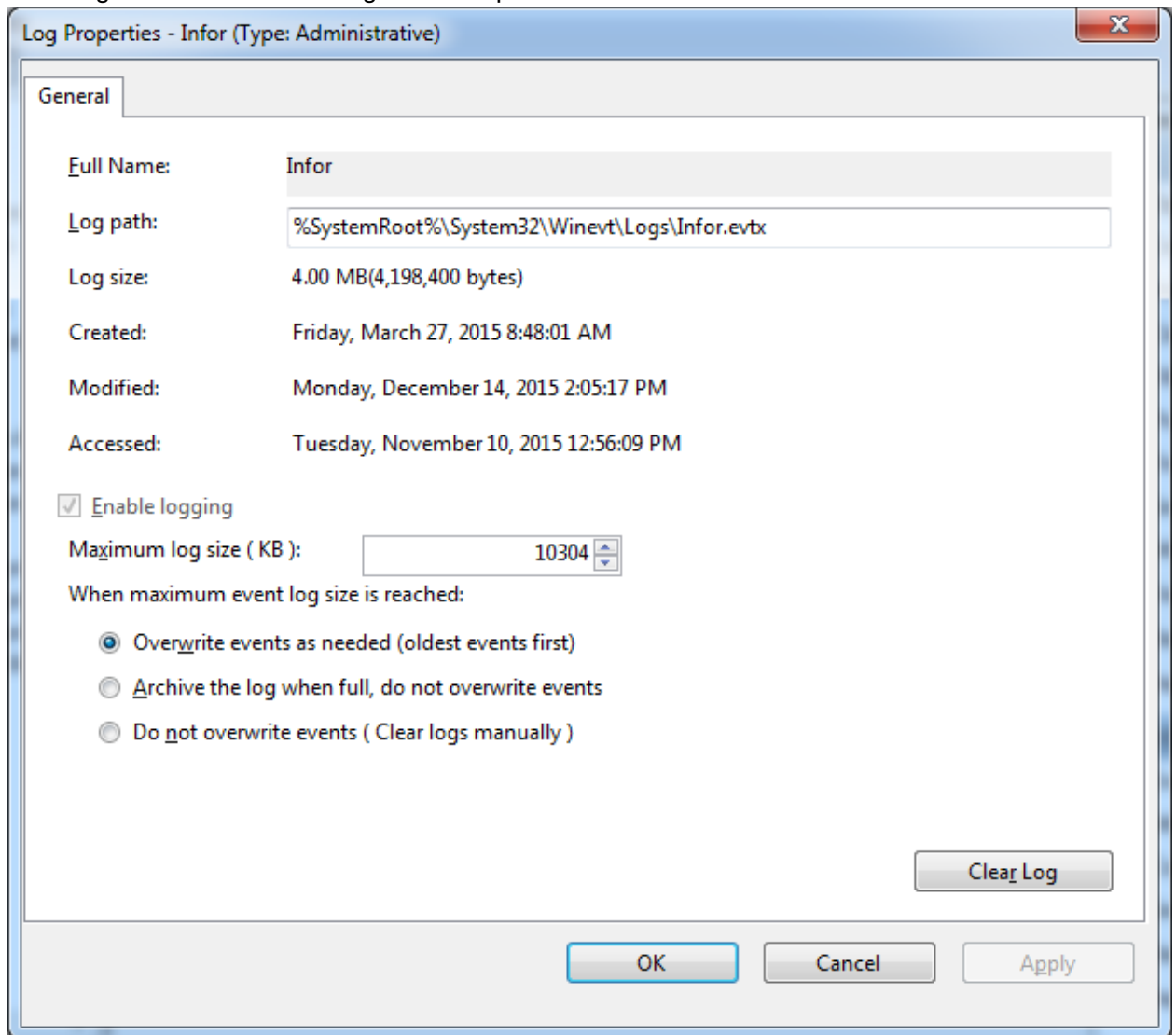
## ***Increasing number of event messages stored***

**Note:** The default windows settings may not store enough error message history depending on the log settings used, number of connections and number of transactions processed. The Trans4m Client messages are also stored in the same log.

- 1 Open Windows Event Viewer.
- 2 Open the Applications and Services Log



### 3 Right Click on the Infor log. Click Properties



- 4 Increase the Maximum log size (KB) as needed.
- 5 Make sure Overwrite events as needed (oldest events first) is selected.
- 6 Click OK.

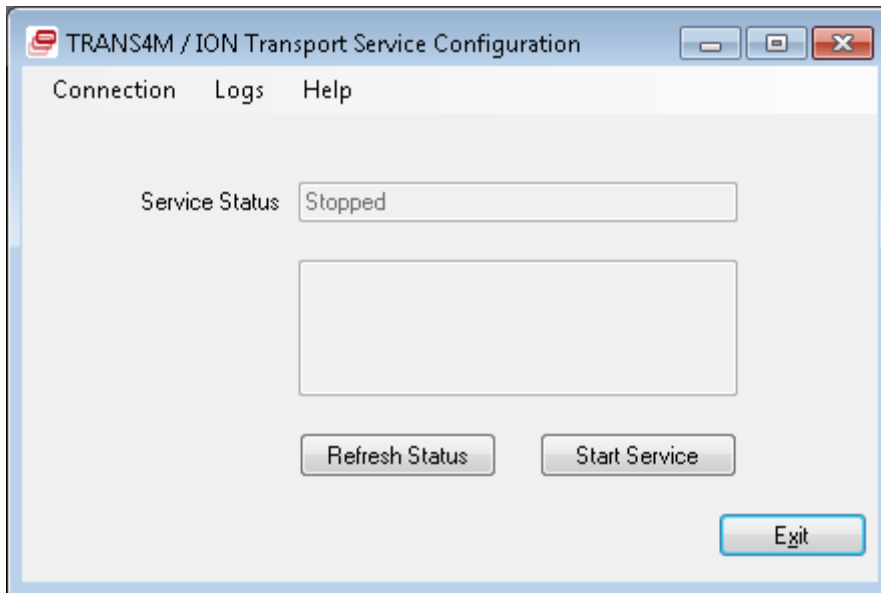


## Chapter 5 Managing the OnRamp Service

# 5

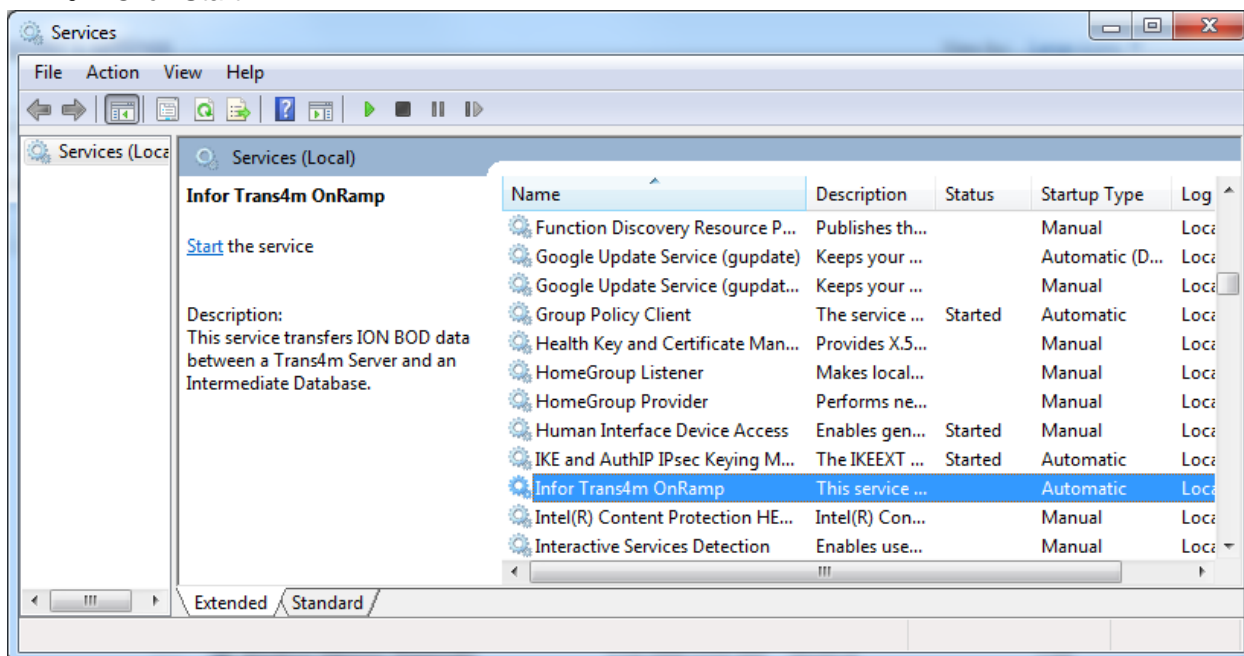
### ***Start from OnRamp Configuration program.***

Click Start Service on the main form



### ***Start the service from the Windows Services program.***

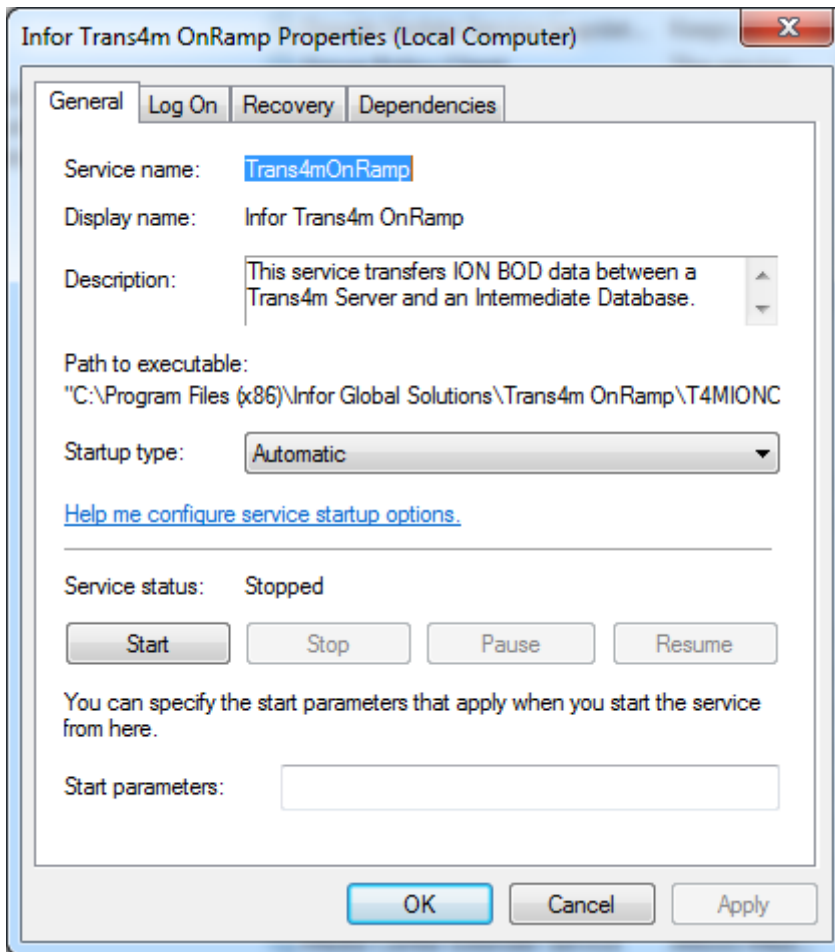
- 1 Open the Windows Services program
- 2 Scroll the list down to Infor Trans4m OnRamp.
- 3 Click Start.



### ***Change Startup Type***

- 1 Open the Windows Services program
- 2 Scroll the list down to Infor Trans4m OnRamp.
- 3 Right-click the service and select properties.

4 Change Startup type to desired value.



5 Click OK.