



# ActivEntry

## Admin Role

### **Important Notices**

The material contained in this publication (including any supplementary information) constitutes and contains confidential and proprietary information of Infor.

By gaining access to the attached, you acknowledge and agree that the material (including any modification, translation or adaptation of the material) and all copyright, trade secrets and all other right, title and interest therein, are the sole property of Infor and that you shall not gain right, title or interest in the material (including any modification, translation or adaptation of the material) by virtue of your review thereof other than the non-exclusive right to use the material solely in connection with and the furtherance of your license and use of software made available to your company from Infor pursuant to a separate agreement, the terms of which separate agreement shall govern your use of this material and all supplemental related materials ("Purpose").

In addition, by accessing the enclosed material, you acknowledge and agree that you are required to maintain such material in strict confidence and that your use of such material is limited to the Purpose described above. Although Infor has taken due care to ensure that the material included in this publication is accurate and complete, Infor cannot warrant that the information contained in this publication is complete, does not contain typographical or other errors, or will meet your specific requirements. As such, Infor does not assume and hereby disclaims all liability, consequential or otherwise, for any loss or damage to any person or entity which is caused by or relates to errors or omissions in this publication (including any supplementary information), whether such errors or omissions result from negligence, accident or any other cause.

Without limitation, U.S. export control laws and other applicable export and import laws govern your use of this material and you will neither export or re-export, directly or indirectly, this material nor any related materials or supplemental information in violation of such laws, or use such materials for any purpose prohibited by such laws.

### **Trademark Acknowledgements**

The word and design marks set forth herein are trademarks and/or registered trademarks of Infor and/or related affiliates and subsidiaries. All rights reserved. All other company, product, trade or service names referenced may be registered trademarks or trademarks of their respective owners.

### **Publication Information**

Release: Product Name Release level

Publication date: August 26, 2014

---

---

# Contents

<b>About this guide</b> .....	<b>5</b>
Intended audience .....	5
Organization.....	5
Related documents .....	5
Contacting Infor.....	5
<b>Chapter 1   Administrator Role</b> .....	<b>7</b>
Setting Up Unidata Connection .....	7
Setting Up User Role.....	8
Setting Up RMS User Relation.....	9
Setting Up License.....	10



---

## About this guide

## Intended audience

## Organization

This table shows the chapters of the guide:

Section	Description

## Related documents

You can find the documents in the product documentation section of the Infor Xtreme Support portal, as described in "Contacting Infor" on page 5.

## Contacting Infor

If you have questions about Infor products, go to the Infor Xtreme Support portal at [www.infor.com/inforxtreme](http://www.infor.com/inforxtreme).

If we update this document after the product release, we will post the new version on this Web site. We recommend that you check this Web site periodically for updated documentation.

If you have comments about Infor documentation, contact [documentation@infor.com](mailto:documentation@infor.com).

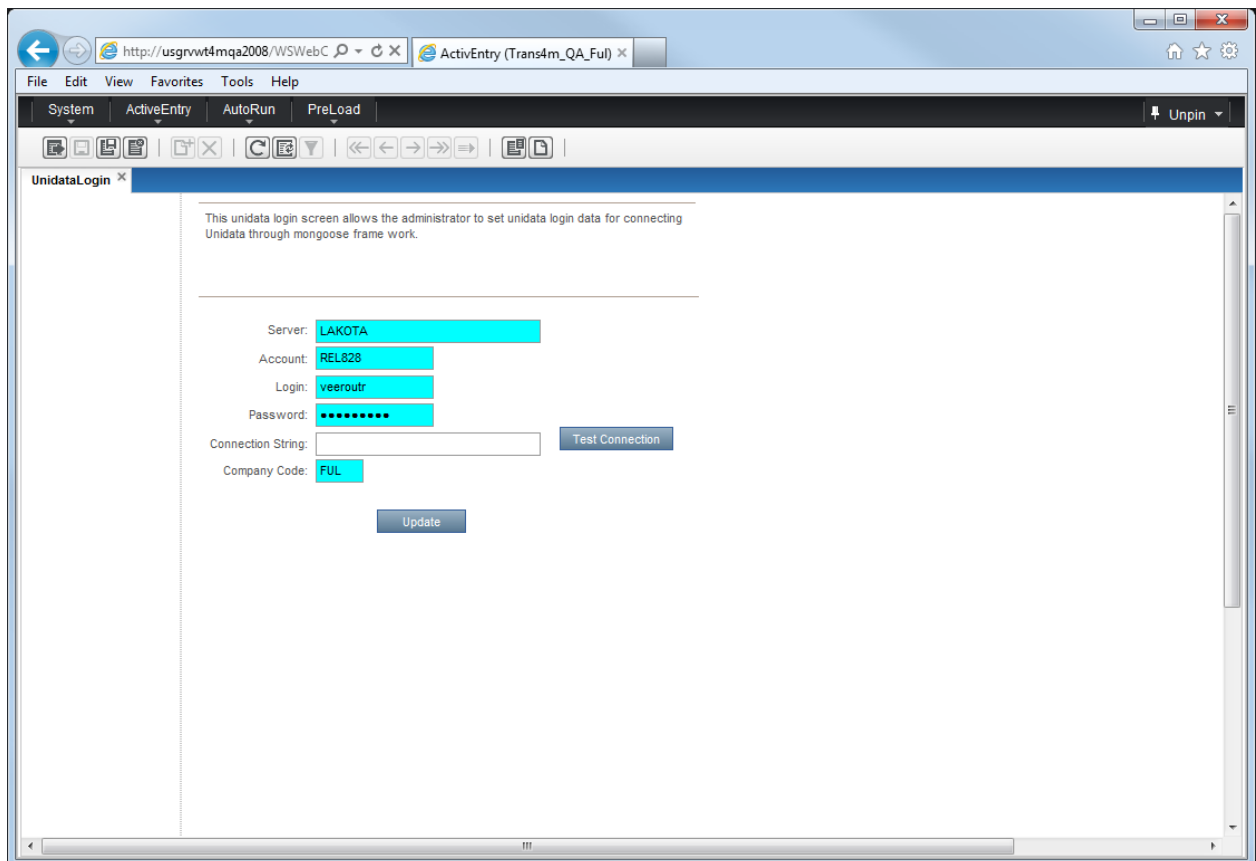


# Chapter 1 Administrator Role

# 1

## Setting up Unidata Connection

- 1) Select Admin – UserDataLogin Screen.



2. **Server** - Enter the unidata server name. The Server name you specify here becomes part of the connection to connect unidata. This server name is case sensitive.
3. **Account** – Enter the Unidata Account Information for the server. The account Information used here is used to connect to Unidata. This account name is case sensitive.
- 4 **User Login** - Enter the user login name. The Login name you specify here becomes part of the connection to connect unidata. This user name is case sensitive.
5. **Password** – Enter the Password for the user login.

6. **Company Code** – Enter the Company code. This Company code is case sensitive.
7. **Test Connection** – Test connection button allows the user to check connection established successfully.

## Setting up User Role

User Screen: User Screen allows Admin to create user roles and allow privileges to User for accessing each page.

1. Select Admin – User Screen.

The screenshot shows the WinStudio Admin User creation screen. The interface is divided into two main sections: a left sidebar with a list of users and a right main area with a form for creating a new user.

**Users List (Left Sidebar):**

User ID
1 > sa
2 VEEROUTR

**User Form (Right Main Area):**

User ID:  ☒ Super User

User Description:

User Password:

Confirm Password:

Workstation Domain/ID:

Editing Permissions:

**Groups Section:**

Groups | Login Information | E-mail Address | Source Control

Group Name	Group Description	Primary...
★ 1 >		<input type="button" value="..."/>

At the bottom of the Groups section, there are buttons for  and .

2. **User ID** - Enter the userid. The user id specified here becomes part of the login to connect Activ Entry. If the use rid specified here is RMSUserid than no need to create a relation in User relation screen. If user id differs from RMSUserid need to create a user relation in user relation screen which is mentioned below.
3. **User Description** – Enter the user description . If the userid is Admin. The user description would be Winstudio admin User.
- 4 **User Password** - Enter the user Password. This user Password is case sensitive.
5. **Confirm Password** – Enter the confirm Password.



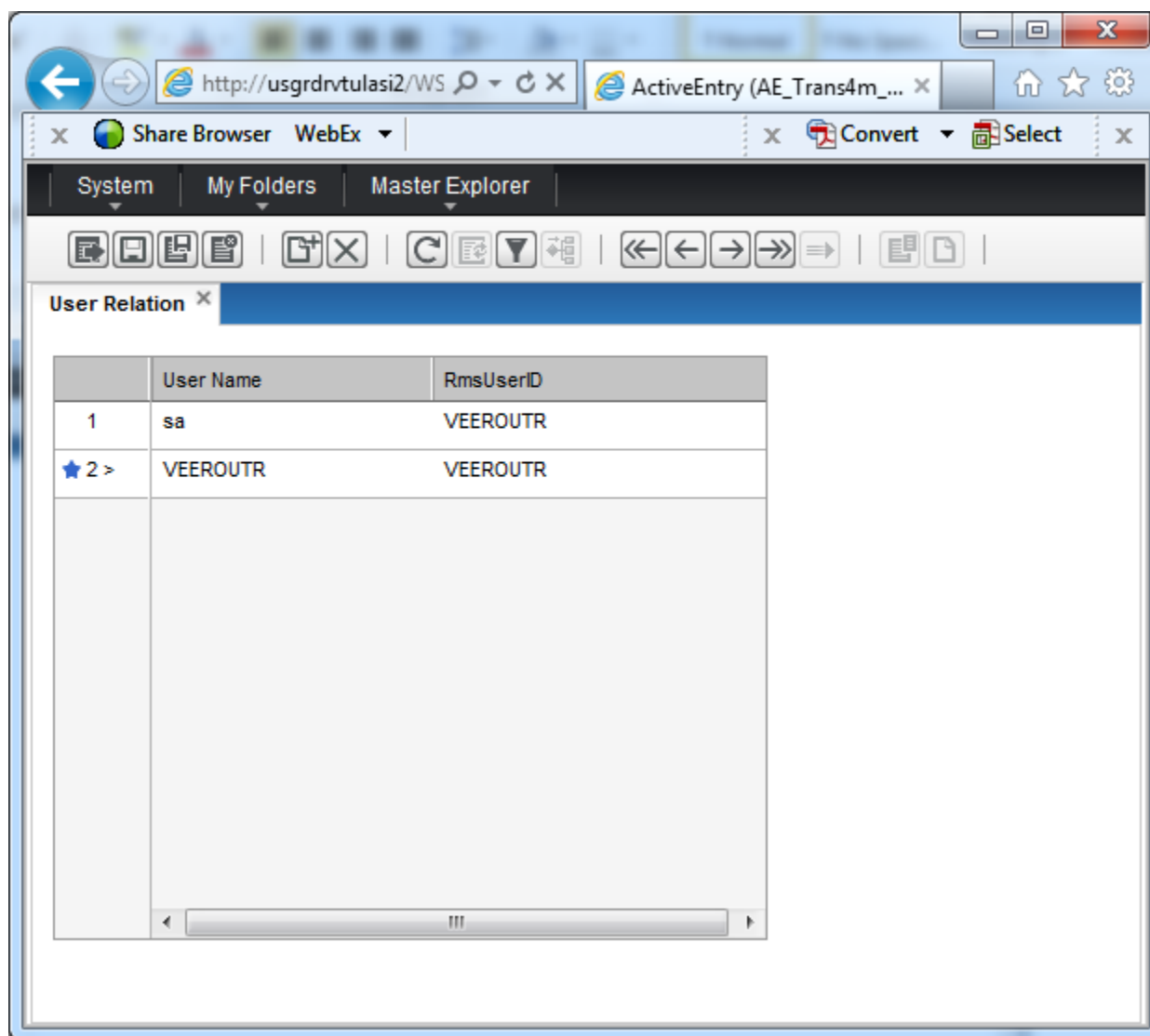
6. **Work Station Domain ID** – Enter the work station domain ID.

7. **Editing Permission** – Editing Permission allows to setting user permission

## Setting up User Relation

User Screen: User Screen allows Admin to create user roles and allow privileges to User for accessing each page.

1. Select Admin – User Relation.

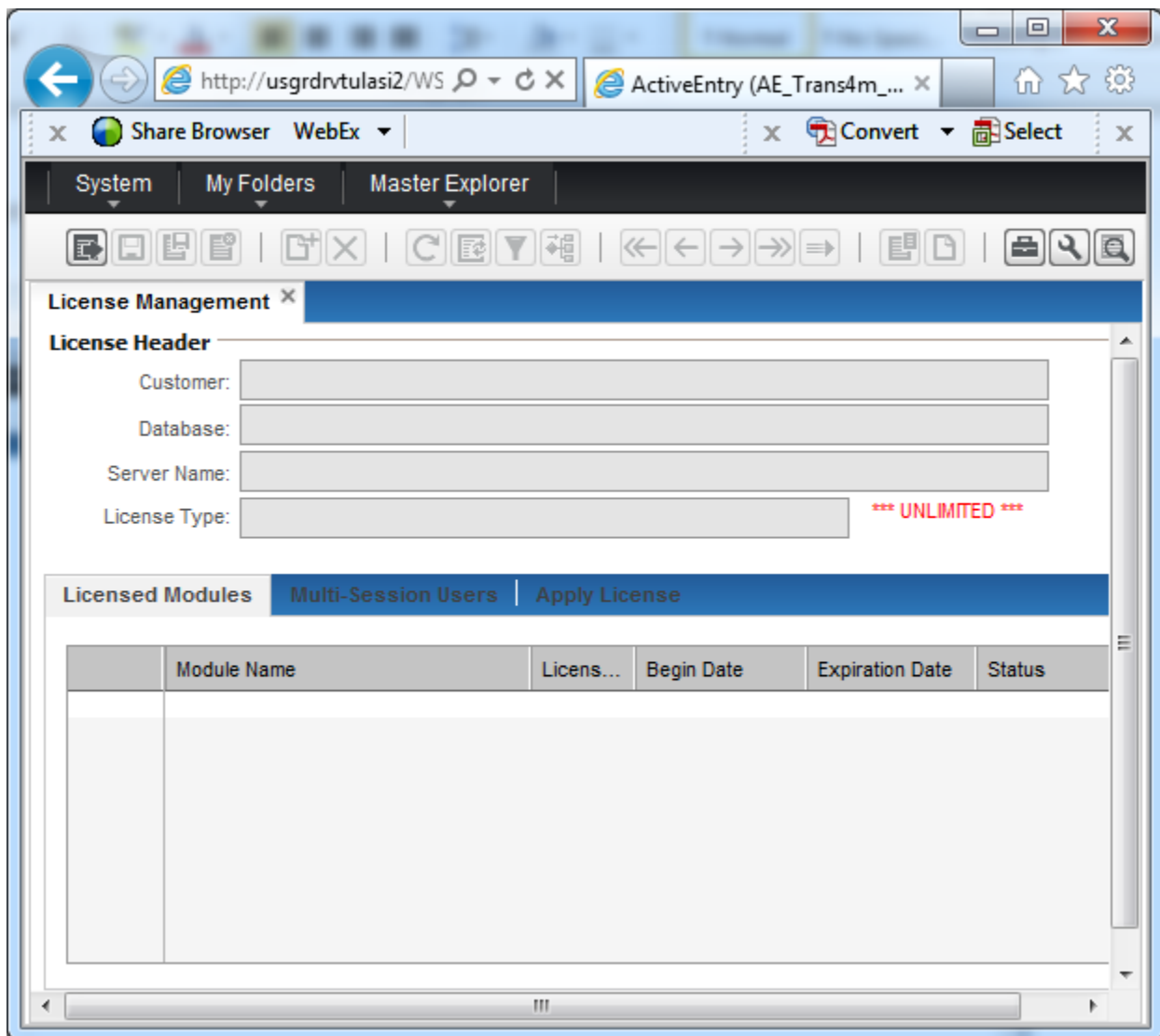


2. **Username** - Select Mongoose User name.

3. **RmsUserid** - Select RmsUserid from RMS users.

## Setting up License

1. Select Admin – License Management.



2. Click on Apply License Tab.

System | ActivEntry | Admin | AutoRun | PreLoad | Unpin

Unidata Login x License Management x

**License Header**

Customer: \*\*\* INFOR INTERNAL \*\*\*

Database: Trans4m\_QA\_Ful\_App

Server Name: USGRVWT4MQA2008

License Type: Named User \*\*\* UNLIMITED \*\*\*

Licensed Modules | Multi-Session Users | Apply License

License Document:

Apply License

Clear License Field

Browse...

3) Click on Browse button to get License file.

4). Click on Apply License Button.