



Infor PLM Accelerate 11.0 - Publishing Service Setup Guide

Important Notices

The material contained in this publication (including any supplementary information) constitutes and contains confidential and proprietary information of Infor.

By gaining access to the attached, you acknowledge and agree that the material (including any modification, translation or adaptation of the material) and all copyright, trade secrets and all other right, title and interest therein, are the sole property of Infor and that you shall not gain right, title or interest in the material (including any modification, translation or adaptation of the material) by virtue of your review thereof other than the non-exclusive right to use the material solely in connection with and the furtherance of your license and use of software made available to your company from Infor pursuant to a separate agreement, the terms of which separate agreement shall govern your use of this material and all supplemental related materials ("Purpose").

In addition, by accessing the enclosed material, you acknowledge and agree that you are required to maintain such material in strict confidence and that your use of such material is limited to the Purpose described above. Although Infor has taken due care to ensure that the material included in this publication is accurate and complete, Infor cannot warrant that the information contained in this publication is complete, does not contain typographical or other errors, or will meet your specific requirements. As such, Infor does not assume and hereby disclaims all liability, consequential or otherwise, for any loss or damage to any person or entity which is caused by or relates to errors or omissions in this publication (including any supplementary information), whether such errors or omissions result from negligence, accident or any other cause.

Without limitation, U.S. export control laws and other applicable export and import laws govern your use of this material and you will neither export or re-export, directly or indirectly, this material nor any related materials or supplemental information in violation of such laws, or use such materials for any purpose prohibited by such laws.

Trademark Acknowledgements

The word and design marks set forth herein are trademarks and/or registered trademarks of Infor and/or related affiliates and subsidiaries. All rights reserved. All other company, product, trade or service names referenced may be registered trademarks or trademarks of their respective owners.

Publication Information

Publication date: May 31, 2018

Contents

- Intended audience 5
- Related documents 5
- Contacting Infor..... 5
- Chapter 1. Overview 6
- Chapter 2. Prerequisites 7
 - Feature License Key..... 7
 - Requesting a Feature License 7
 - Installing the License..... 7
- Chapter 3. Configuring Conversion Server..... 9

About this guide

This document provides information on how to install, configure and logging into the Infor PLM Accelerate software.

Intended audience

This guide is intended for system administrators. This document assumes that you have at least some knowledge in:

- System architecture and function for your Infor system
- SQL Server database

For the most up-to-date list of software and hardware requirements for Infor products, see the documentation for your system.

Related documents

You can find the documents in the product documentation section of the Infor Xtreme Support portal, as described in the "Contacting Infor" section below.

Contacting Infor

If you have questions about Infor products, go to the Infor Xtreme Support portal at www.infor.com/inforxtreme.

If we update this document after the product release, we will post the new version on this Web site. We recommend that you check this Web site periodically for updated documentation.

If you have comments about Infor documentation, contact documentation@infor.com.

Chapter 1. Overview

Publishing Service is available for Infor subscribers.

The following document walks through the configuration of the Conversion Server required to enable the Publishing Feature.

.

Chapter 2. Prerequisites

Before proceeding, you need to install a Conversion Server and ensure that you meet the additional prerequisites.

For instructions on installing a conversion server, see the **Infor PLM Accelerate – Installation Guide**.

Feature License Key

The PublishingService license comes as part of most license bundles for subscribers, such as Aras.PremierSubscription. It does not require a separate activation. To check whether a valid **Feature License** exists in Infor PLM Accelerate:

1. Log into Infor PLM Accelerate as an administrator.
2. Go to **Administration --> Feature Licenses**.
3. If a subscription license is found, check the expiration date to confirm that the license is still active.

Requesting a Feature License

Enter Infor's support portal at www.infor.com/inforxtreme to request for a license key and to download any related installation documentation.

Installing the License

Once you have the activation key, install the feature license as follows:

1. Log into Infor PLM Accelerate as an administrator.
2. From the main menu toolbar, select **Tools --> Admin --> Licenses --> Activate Feature**.

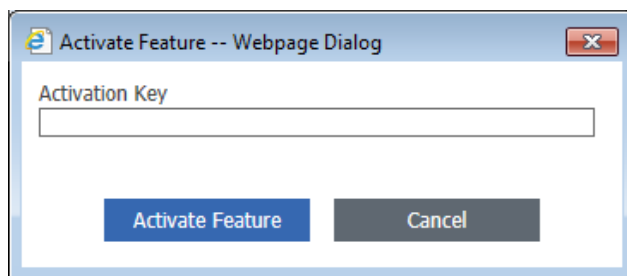


Figure 1.

3. Paste the acquired activation key and click **Activate Feature**.

A success message should pop up similar to the one shown below.

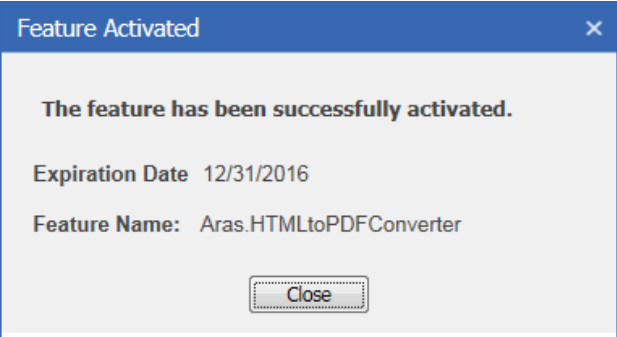


Figure 2.

Chapter 3. Configuring Conversion Server

The Publishing Service feature requires that the Conversion Server be configured to enable it.

To enable the service

1. Open ConversionServerConfig.xml file for editing.

Typically, this file is located at the root of Infor PLM Accelerate code tree (Sample:
C:\Program Files (x86)\Aras\Innovator\ConversionServerConfig.xml)

2. Into the section <Converters/> add:

```
<Converter name="tp_XmlPublishingConverter"
type="Aras.Publishing.XmlPublishingConverter,
Aras.TDF.PublishingConverter"/>
<Converter name="tp_HtmlPublishingConverter"
type="Aras.Publishing.HtmlPublishingConverter,
Aras.TDF.PublishingConverter"/>
```

The following is a sample of a ConversionServerConfig.xml file with the required setup:

```
<?xml version="1.0" encoding="utf-8"?>
<configuration>
  <configSections>
    <!-- Common converter service configuration -->
    <section name="ConversionServer"
type="Aras.ConversionFramework.ConversionServer.Configuration.ConversionServerConfigurat
ionSection"/>
    <sectionGroup name="ConverterSettings">
      <!-- Place here class configuration section definitions for converters -->
    </sectionGroup>
  </configSections>
  <ConversionServer>
    <InnovatorServer
url="http://localhost/InnovatorServer/Server/InnovatorServer.aspx"/>
    <Converters>
      <Converter name="tp_XmlPublishingConverter"
type="Aras.Publishing.XmlPublishingConverter, Aras.TDF.PublishingConverter"/>
      <Converter name="tp_HtmlPublishingConverter"
type="Aras.Publishing.HtmlPublishingConverter, Aras.TDF.PublishingConverter"/>
    </Converters>
  </ConversionServer>
  <ConverterSettings>
    <!-- Place here configuration sections for converters -->
  </ConverterSettings>
</configuration>
```

3. Save and close the ConversionServerConfig.xml file.