



Infor PLM Accelerate 11

Language Pack Management

Important Notices

The material contained in this publication (including any supplementary information) constitutes and contains confidential and proprietary information of Infor.

By gaining access to the attached, you acknowledge and agree that the material (including any modification, translation or adaptation of the material) and all copyright, trade secrets and all other right, title and interest therein, are the sole property of Infor and that you shall not gain right, title or interest in the material (including any modification, translation or adaptation of the material) by virtue of your review thereof other than the non-exclusive right to use the material solely in connection with and the furtherance of your license and use of software made available to your company from Infor pursuant to a separate agreement, the terms of which separate agreement shall govern your use of this material and all supplemental related materials ("Purpose").

In addition, by accessing the enclosed material, you acknowledge and agree that you are required to maintain such material in strict confidence and that your use of such material is limited to the Purpose described above. Although Infor has taken due care to ensure that the material included in this publication is accurate and complete, Infor cannot warrant that the information contained in this publication is complete, does not contain typographical or other errors, or will meet your specific requirements. As such, Infor does not assume and hereby disclaims all liability, consequential or otherwise, for any loss or damage to any person or entity which is caused by or relates to errors or omissions in this publication (including any supplementary information), whether such errors or omissions result from negligence, accident or any other cause.

Without limitation, U.S. export control laws and other applicable export and import laws govern your use of this material and you will neither export or re-export, directly or indirectly, this material nor any related materials or supplemental information in violation of such laws, or use such materials for any purpose prohibited by such laws.

Trademark Acknowledgements

The word and design marks set forth herein are trademarks and/or registered trademarks of Infor and/or related affiliates and subsidiaries. All rights reserved. All other company, product, trade or service names referenced may be registered trademarks or trademarks of their respective owners.

Publication Information

Publication date: May 30, 2018

Contents

Intended audience	5
Related documents	5
Contacting Infor.....	5
Chapter 1. Overview	6
Chapter 2. Populating a Language	7
Manually Managing Language Packs in the Database.....	7
Using the Language Pack Management Utility	9
The Command Line.....	9
LanguageTool.exe.config.....	10
Export Configuration.....	13
Import Configuration.....	14
XML Resources	14
Updating the Resource.Config.xml	15
<Where> attribute for Export.....	15
Chapter 3. Translation Tips	17
Infor PLM Accelerate Login Page.....	17
Form Editor Tabs.....	19
'Project Plan' Relationship for Project Items	21
'Project Plan' Relationship to Project Template	23
'Changes' Relationship to Document and Part	24
Helpful Translation Tips Using the UI.....	27
Chapter 4. Appendix A.....	29
The <where> Attribute in ExportConfig.xml - Full Sample.....	29
Language Settings in Configurable InBasket.....	32
Chapter 5. Appendix (Client Settings)	33
Defining user's Locale in Browser	33
Internet Explorer 11	33
Firefox for Windows.....	35
Firefox for Mac	36

Chrome for Windows.....	38
Chrome for Mac.....	39

About this guide

This document provides information on how to create new language pack that is used in displaying the Infor PLM Accelerate User Interface in alternate languages.

Intended audience

This guide is intended for system administrators. This document assumes that you have at least some knowledge in:

- System architecture and function for your Infor system
- SQL Server database

For the most up-to-date list of software and hardware requirements for Infor products, see the documentation for your system.

Related documents

You can find the documents in the product documentation section of the Infor Xtreme Support portal, as described in the "Contacting Infor" section below.

Contacting Infor

If you have questions about Infor products, go to the Infor Xtreme Support portal at www.infor.com/inforxtreme.

If we update this document after the product release, we will post the new version on this Web site. We recommend that you check this Web site periodically for updated documentation.

If you have comments about Infor documentation, contact documentation@infor.com.

Chapter 1. Overview

Infor PLM Accelerate has the capability to localize each session based on region and language settings of the client PC machine. Part of this localization is to display the User Interface (UI) in the client session language.

This document outlines how to create a new language pack which is used in displaying the User Interface in alternate languages from the default.

These language packs contain:

- Metadata translations imported directly into the Infor PLM Accelerate database
- XML resource translations used in defining UI elements
- AML Packages for that language pack (optional)
- Code tree patches for that language pack (optional)

Chapter 2. Populating a Language

Once a language has been defined, there are two main ways to populate the language. First, you can manually enter all language data through the UI. Second, you can import a language using the Infor PLM Accelerate Language Pack Management Utility.

Warning Adding a new language should not be done in a live production system. The new language should be added off hours when no users are logged into the system.

Manually Managing Language Packs in the Database

All multi-lingual deployments of Infor PLM Accelerate eventually need to manually configure languages in Infor PLM Accelerate, to account for its specific customization.

Once you have defined a language, see *Infor PLM Accelerate – Configuring Internationalization* document, you can add values to this language for each of the UI elements.

Table 1:

ItemType	Property	Use	Where to edit in the UI
Action	Label	Displays in the Action menu of the toolbars	Administration\Actions
Activity Template	Label	Text to display the Activity message of a workflow	Administration\Workflow Maps property on the Activity
Activity Template	message	Text to display the Activity label of a workflow	Administration\Workflow Maps property on the Activity
Activity Template Task	description	Text to display the Task description of a Workflow Activity	Administration\Workflow Maps under the Tasks label Relationship of an Activity
Activity Template Variable	Label	Text to display the label of an Activity Variable of a workflow	Administration\Workflow Maps under the Variable label Relationship of an Activity
Business Calendar Exception	description	Text displayed to describe a Business Day exception.	Administration\Calendars on the Exceptions label relationship
Field	Label	Text displayed to label a field in a form	Administration\Forms on the Field Label relationship

Field	legend	Text displayed to label a field border in a form	Administration\Forms on the Field Border relationship
Filter Value	Label	Text displayed in pick lists of a filtered list in the UI	Administration\Lists on the Filter Value relationship
Grid Column	Label	Text displayed in Configurable Grid column headers	Administration\Grids on the Grid Column relationship
ItemType	label_plural	Text used in TOC	Administration\ItemTypes
ItemType	Label	Text used in item properties, and Item window title	Administration\ItemTypes
Life Cycle State	Label	Text displayed to label a state of a lifecycle	Administration->LifeCycles on the Life Cycle State properties
Message	Text	Text displayed for a notification message	Administration->Notification Messages
Message	Title	Title of the notification message	Administration->Notification Messages
PM_ProjectGridLayout	Label	Text displayed in the column header of the Project grid	Administration\Preferences on the Project Grid Layout relationship of the World Preference
Property	Label	Text used in the search grid column headers	Administration\ItemTypes on the Properties relationship
Property	default_value	Text used in the default value of a multi-lingual string property	Administration\ItemTypes on the Properties relationship
RelationshipType	Label	Text used the relationship tabs in Item windows	Administration\RelationshipTypes
Report	Label	Displays in the Report menu of the toolbars	Administration\Reports
SavedSearch	Label	Text use for the name of Saved Search	Administration\Saved Searches

SearchMode	Label	Text used to display the different search modes	ItemType not exposed through UI by default
UserMessage	Text	Displays in custom error messages in the UI	ItemType not exposed through UI by default
Value	Label	Text displayed in pick lists in the UI	Administration\Lists on the Value relationship
Workflow Map	description	Text displayed for description of a workflow	Administration\Workflow Maps
Workflow Map	Label	Text displayed in UI for name of a workflow	Administration\Workflow Maps
Workflow Map Path	Label	Text to display the vote path between two Workflow Activities	Administration\Workflow Maps on a path between two activities
Workflow Map Variable	Label	Text to display the label of a Workflow variable	Administration\Workflow Maps on the Process Variable relationship

Each row in the table above represents a property in the user interface that has been defined as a multi-lingual string. The translator needs to edit each Item of that type that needs to display a non-English value.

Using the Language Pack Management Utility

To aid in the ability to move language packs from one database to the next, Infor has created a Language Pack Management Utility to export and import language values from a database. Language Pack Management Utility is a command line utility that imports and exports language packs from the Infor PLM Accelerate database on a SQL level. The following explains how to use the utility available from the Language Pack Management Utility folder of the Infor PLM Accelerate CD Image.

The Command Line

There are several elements to the Language Pack Management Utility command line tool. First, is the executable file for the Language Pack Management Utility itself, LanguageTool.exe. The details of the various options for running the executable at the command line are as follows:

Usage: LanguageTool.exe [-export/-import] [-config_file:<file path>]
 [-folder:<folder path>] [-log_file:<file path>] [-log_level:<log level>
] [-server:<SQL server name>] [-db:<database name>] [-login:<login name>]
 [-pwd:<login password>]

Where:

- -export/import – This is the required parameter to indicate if the operation is to export or import a language.
- -config_file – (Optional) The path to the configuration file for current operation, ImportConfig.xml or ExportConfig.xml.
- -folder – (Optional) The path to the data folder. This is the output folder for the export operation, or the input folder for the import operation.
- -log_file – (Optional) The path to the log file.
- -log_level – (Optional) The logging level (high, medium, low).
- -server – (Optional) The name of the Microsoft SQL Server instance where the Infor PLM Accelerate database is installed.
- -db - (Optional) The name of the Infor PLM Accelerate database.
- -login - (Optional) The login assigned to the Infor PLM Accelerate database.
- -password – (Optional) The password for the login assigned to the Infor PLM Accelerate database.

Note: The optional parameters can be generally included in the LanguageTool.exe.config configuration file, but the command line parameters take precedence.

LanguageTool.exe.config

The LanguageTool.exe.config configuration file that is referenced by the Language Pack Management Utility is a straightforward xml file that defines the parameters for the batch load activity.

```
<?xml version="1.0" encoding="utf-8" ?>
<configuration>
  <configSections>
    <sectionGroup name="userSettings"
      type="System.Configuration.UserSettingsGroup, System,
      Version=2.0.0.0, Culture=neutral,
      PublicKeyToken=b77a5c561934e089" >
      <section name="Aras.Tools.I18N.ExpImpMLData.Properties.Settings"
        type="System.Configuration.ClientSettingsSection, System,
        Version=2.0.0.0, Culture=neutral,
        PublicKeyToken=b77a5c561934e089"
```

```

        allowExeDefinition="MachineToLocalUser"
requirePermission="false"/>
    </sectionGroup>
</configSections>
<userSettings>
    <Aras.Tools.I18N.ExpImpMLData.Properties.Settings>
        <setting name="config_file" serializeAs="String">
            <value>C:\German\ImportConfig.xml</value>
        </setting>
        <setting name="folder" serializeAs="String">
            <value>C:\German\data</value>
        </setting>
        <setting name="log_file" serializeAs="String">
            <value>C:\German\log.txt</value>
        </setting>
        <setting name="log_level" serializeAs="String">
            <value>high</value>
        </setting>
        <setting name="server" serializeAs="String">
            <value>localhost</value>
        </setting>
        <setting name="db" serializeAs="String">
            <value>InnovatorSolutions</value>
        </setting>
        <setting name="login" serializeAs="String">
            <value>innovator</value>
        </setting>
        <setting name="pwd" serializeAs="String">
            <value>innovator</value>
        </setting>
    </Aras.Tools.I18N.ExpImpMLData.Properties.Settings>
</userSettings>
</configuration>

```

To help understand how to configure this file, the example above can be broken down line by line:

```

<setting name="config file" serializeAs="String">
<value>C:\German\ImportConfig.xml</value>
</setting>

```

This is the path to the path to a configuration file for current operation, ImportConfig.xml or ExportConfig.xml.

```

<setting name="folder" serializeAs="String">
<value>C:\German\data</value>
</setting>

```

The path to the data folder. This is the output folder for the export operation, or the input folder for the import operation.

```
<setting name="log_file" serializeAs="String">  
<value>C:\German\log.txt</value>  
</setting>
```

This is the path to the log file.

```
<setting name="log_level" serializeAs="String">  
<value>high</value>  
</setting>
```

This is the logging level, 'high' recommended.

```
<setting name="server" serializeAs="String">  
<value>localhost</value>  
</setting>
```

The name of the Microsoft SQL Server instance where the Infor PLM Accelerate database is installed. This value can be found in the Infor PLM Accelerate InnovatorServerConfig.xml in DB-Connection tag. (server="localhost")

```
<setting name="db" serializeAs="String">  
<value>InnovatorSolutions</value>  
</setting>
```

This is the name of the Infor PLM Accelerate database in SQL Server. This value can be found in the Infor PLM Accelerate InnovatorServerConfig.xml in DB-Connection tag. (database='InnovatorSolutions')

```
<setting name="login" serializeAs="String">  
<value>innovator</value>  
</setting>
```

This is the login assigned to innovator user of the Infor PLM Accelerate database in SQL Server. This value can be found in the Infor PLM Accelerate InnovatorServerConfig.xml in DB-Connection tag. (uid='innovator')

```
<setting name="pwd" serializeAs="String">  
<value>innovator</value>  
</setting>
```

This is the name login assigned to Infor PLM Accelerate user of the Infor PLM Accelerate database in SQL Server. This value can be found in the Infor PLM Accelerate InnovatorServerConfig.xml in DB-Connection tag. (pwd='innovator')

Any of the parameters may be left out as long as the command line equivalent parameter is defined.

Export Configuration

In order to export a language pack from the Infor PLM Accelerate database, you need to define what languages and ItemTypes to export. The definitions of these settings are found in the `ExportConfig.xml`.

```
<export>
  <languages list="en, de" />
  <itemtype name="Action" />
  <itemtype name="Activity Template" />
  <itemtype name="Activity Template Task" />
  <itemtype name="Activity Template Variable" />
  <itemtype name="Business Calendar Exception" />
  <itemtype name="Field" />
  <itemtype name="Filter Value" />
  <itemtype name="Grid Column" />
  <itemtype name="ItemType">
    <properties list="label,label_plural" />
  </itemtype>
  <itemtype name="Life Cycle State" />
  <itemtype name="PM_ProjectGridLayout" />
  <itemtype name="Property" />
  <itemtype name="RelationshipType" />
  <itemtype name="Report" />
  <itemtype name="SavedSearch" />
  <itemtype name="SearchMode" />
  <itemtype name="UserMessage" />
  <itemtype name="Value" />
  <itemtype name="Workflow Map" />
  <itemtype name="Workflow Map Path" />
  <itemtype name="Workflow Map Variable" />
</export>
```

To help understand how to configure this file, the example above can be broken down line by line:

```
<languages list="en, de" />
```

These are the languages by Language Item code property defined in Infor PLM Accelerate. The above example shows en (English) and fr (French).

```
<itemtype name="Field" />
```

Each ItemType defined in this file contains all of its multi-lingual string properties exported from the database.

```
<properties list="label,label_plural" />
```

If you want to select some, but not all multi-lingual string properties, add this tag with the properties to export.

Import Configuration

In order to import a language pack into the Infor PLM Accelerate database, you first need to define the Language Item in the database, see the *Infor PLM Accelerate – Configuring Internationalization* document. Next, you need to setup the ImportConfig.xml.

```
<import>
  <itemtype name="Action" />
  <itemtype name="Activity Template" />
  <itemtype name="Activity Template Task" />
  <itemtype name="Activity Template Variable" />
  <itemtype name="Business Calendar Exception" />
  <itemtype name="Field" />
  <itemtype name="Filter Value" />
  <itemtype name="Grid Column" />
  <itemtype name="ItemType" />
  <itemtype name="Life Cycle State" />
  <itemtype name="PM_ProjectGridLayout" />
  <itemtype name="Property" />
  <itemtype name="RelationshipType" />
  <itemtype name="Report" />
  <itemtype name="SavedSearch" />
  <itemtype name="SearchMode" />
  <itemtype name="UserMessage" />
  <itemtype name="Value" />
  <itemtype name="Workflow Map" />
  <itemtype name="Workflow Map Path" />
  <itemtype name="Workflow Map Variable" />
</import>
```

Each ItemType defined in this file should have a corresponding XML file containing the language values in the data folder.

XML Resources

The XML resources represent the static content of the Infor PLM Accelerate user interface, such as menu options and toolbar buttons. There is no automated tool for updating these resources. They must be done manually in a text editor.

For instance in the \Innovator\Client\xml\item_menu.xml file

```
<?xml version="1.0" encoding="UTF-8"?>
<menuapplet on_load="onItemMenuLoad" on_select="onClickItem"
on_check="onCheckMenu" show="item_menubar">
  <menubar id="item_menubar">
    <menu id="file_menu" name="File">
```

Would become

```
<?xml version="1.0" encoding="UTF-8"?>
<menuapplet on_load="onItemMenuLoad" on_select="onClickItem"
on_check="onCheckMenu" show="item_menubar">
  <menubar id="item_menubar">
    <menu id="file_menu" name="Datei">
```

In the \Innovator\Client\xml.de\item_menu.xml file.

Infor PLM Accelerate houses all the generic user interface XML resources in the \Innovator\Client\xml folder. However, each solution could have its own xml resources as well. See the Infor PLM Accelerate – Configuring Internationalization document.

Updating the Resource.Config.xml

The Resource.Config.xml located in \Innovator\Client\XML folder defines the language(s) that can be loaded on the Client. When you define the language pack, you need to update Resource.Config.xml file and add a reference to your language.

Below is an example of adding the German Language to the Resource.Config.xml:

```
<satelliteresources>
  ...
  <resource culture="neutral"/>
  <resource culture="ja"/>
  <resource culture="de"/>
  ...
```

Once you have updated the Resource.Config.xml and saved it, you need to Restart IIS on the Server.

<Where> attribute for Export

The 'where' attribute condition can be used to limit the amount of exported data that is returned while using the Language Tool. So in this scenario the ExportConfig.xml would contain XML that looks as follows:

```
<export>

<itemtype name="Field">
  <properties list="label,legend" />
  <where>
    SOURCE_ID in (
      select b.ID
      from Body as b
      where b.SOURCE_ID in
      (
        SELECT f.id
        FROM FORM AS f
        INNER JOIN [VIEW] AS v ON f.ID = v.RELATED_ID
```

```
WHERE (v.SOURCE_ID IN
      (SELECT it.ID
       FROM ITEMTYPE AS it
       INNER JOIN TOC_ACCESS AS ta ON ta.SOURCE_ID = it.ID
       INNER JOIN [IDENTITY] AS idn ON ta.RELATED_ID = idn.ID
       WHERE (idn.NAME != 'Innovator Admin') AND (idn.NAME !=
'Administrators') AND (idn.NAME != 'Super User'))))
  </where>
</itemtype>
</export>
```

Note: The full sample XML can be found in Appendix A.

Chapter 3. Translation Tips

The examples, screen shots, and folder paths throughout this document are based on the translation of Infor PLM Accelerate into Japanese.

The following section glances at use cases that may arise during translation and how to resolve them.

Infor PLM Accelerate Login Page

Although the session context has not been determined prior to logging into Infor PLM Accelerate it is still possible to have the Login Screen localized for the user. Internet Explorer holds a session context that can be pulled during the loading of the login page that allows the proper resources to be called.



Figure 1.

The text fields of the Infor PLM Accelerate login page are being pulled from the `ui_Resoruces.xml` file that can be located in the `\\Innovator\Client\xml.ja` folder of your Infor PLM Accelerate code tree. In this file, you will find the following section that contains the UI resources that populate the login page.

```
<!-- +++++ Client/Scripts/login.aspx +++++ -->
<resource key="login.login_page_title_sfx" value="Login"/>
<resource key="login.login_name_html" value="Login Name: &nbsp;"/>
<resource key="login.pwd_html" value="Password: &nbsp;"/>
<resource key="login.db_html" value="Database: &nbsp;"/>
<resource key="login.server_html" value="Server: &nbsp;"/>
```

```

<resource key="login.cookies_are_disabled_msg_html" value="Please
confirm that cookies are enabled in &lt;br&gt;your browser before to
login to Infor PLM Accelerate."/>
<resource key="login.enter_login_name_status_msg" value="Enter Login
Name"/>
<resource key="login.enter_pwd_status_msg" value="Enter Password"/>
<resource key="login.selected_base_status_msg" value="Selected
base:"/>
<resource key="login.missing_login_name_wrn" value="Missing Login
Name."/>
<resource key="login.missing_pwd_wrn" value="Missing Password."/>
<resource key="login.missing_db_wrn" value="Missing Database."/>
<resource key="login.version_html" value="Version:"/>
<resource key="login.build_html" value="Build:"/>
<resource key="login.bookmark_this_page_txt" value="Bookmark this
page"/>
<resource key="login.bookmark_this_page_txt2" value="Bookmark this
page..."/>
<resource key="login.login_btn_label" value="Login"/>
<resource key="login.cancel_btn_label" value="Cancel"/>
<!-- Client/Scripts/login.aspx -->

```

The values highlighted in yellow above, control what is displayed on the Login Page along with any messages that may pop up. After translating these values save the ui_Resources.xml file and verify the login page adheres to your changes.



Figure 2.

Form Editor Tabs

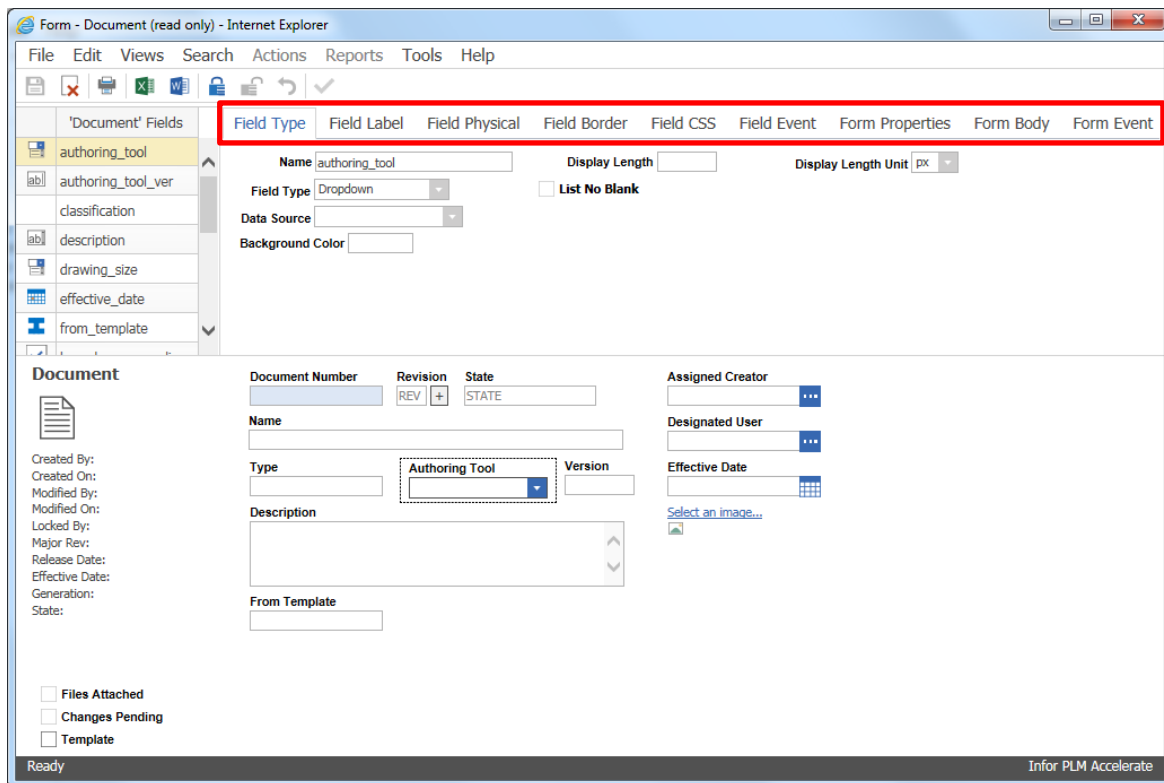


Figure 3.

Although the tabs inside the Form Editor appear to be basic Relationship tabs, they are actually being populated by the `ui_Resources.xml` file that can be located in the `\\Innovator\Client\xml\ja` folder of your Infor PLM Accelerate code tree. In this file you will find the following section that contains the UI resources that populate the text for the Form Editor Tabs.

```
<!-- +++++ Client/Scripts/FormTool/formTabs.html +++++ -->
<resource key="formtabs.field_type" value="Field Type"/>
<resource key="formtabs.field_label" value="Field Label"/>
<resource key="formtabs.field_physical" value="Field Physical"/>
<resource key="formtabs.field_border" value="Field Border"/>
<resource key="formtabs.field_event" value="Field Event"/>
<resource key="formtabs.form_props" value="Form Properties"/>
<resource key="formtabs.form_body" value="Form Body"/>
<resource key="formtabs.form_event" value="Form Event"/>
<resource key="formtabs.populating_data_source_list"
value="populating data source list"/>
<!-- Client/Scripts/FormTool/formTabs.html -->
```

The values highlighted in yellow above, control the text that is displayed on the Form Editor tabs along with any messages that may pop up. After translating these values save the `ui_Resources.xml` file and verify the Form Editor adheres to your changes.

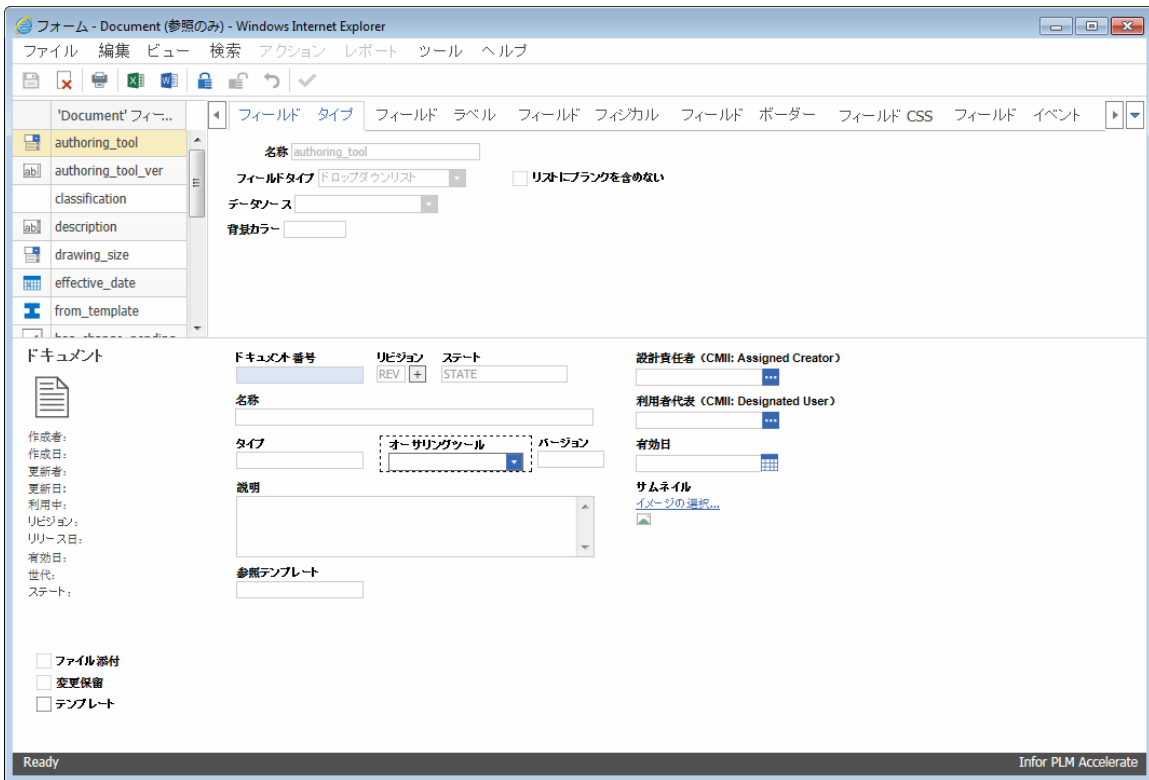


Figure 4.

'Project Plan' Relationship for Project Items

The column headers for the 'Project Plan' of the Project ItemType are maintained in the 'World' Preference Item.

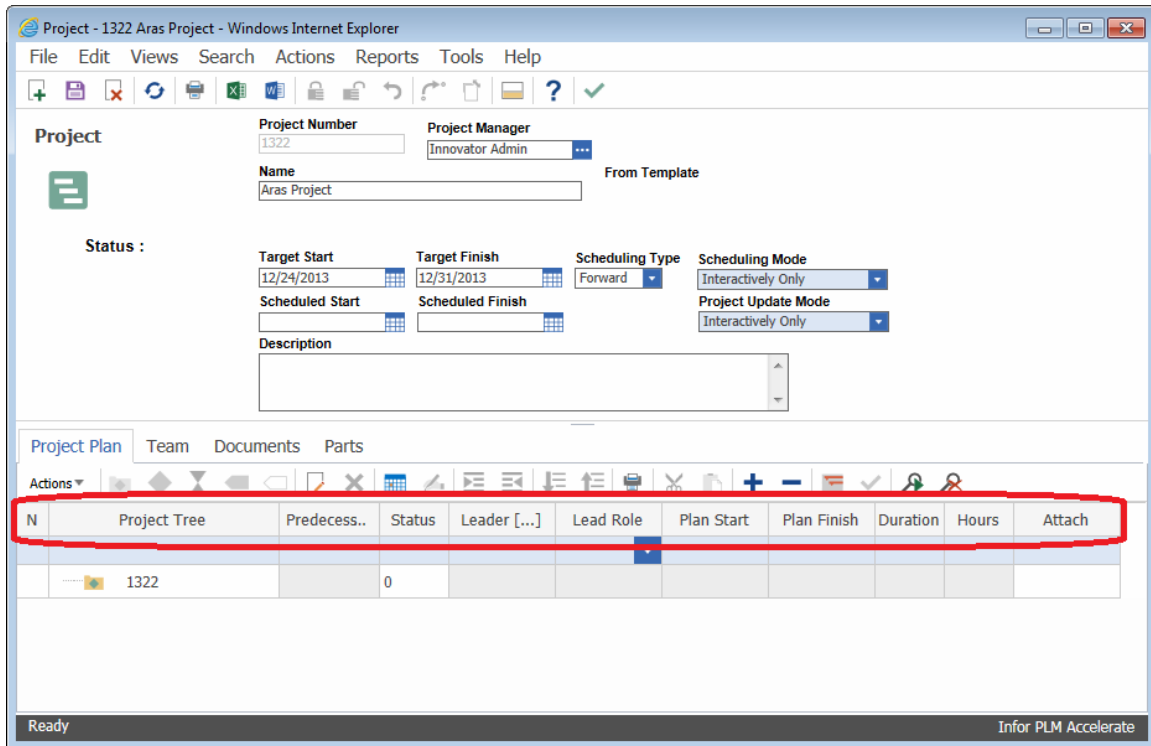


Figure 5.

To add multi-lingual labels to these column headers, you need to edit the 'World' Preference in Administration\Preferences.

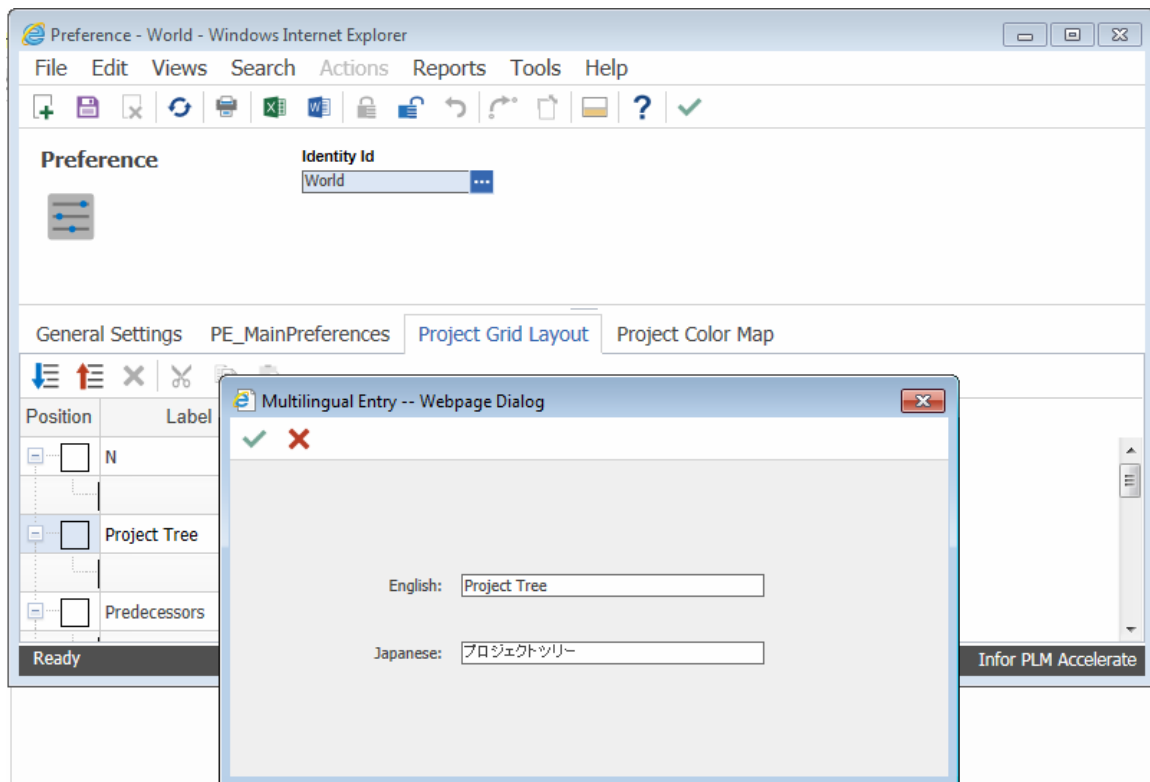


Figure 6.

The Label column contains the multi-lingual string that maps to the 'Project Team' column header. Changing this text can be done by simply putting the desired grid cell in edit mode and pressing F2.

'Project Plan' Relationship to Project Template

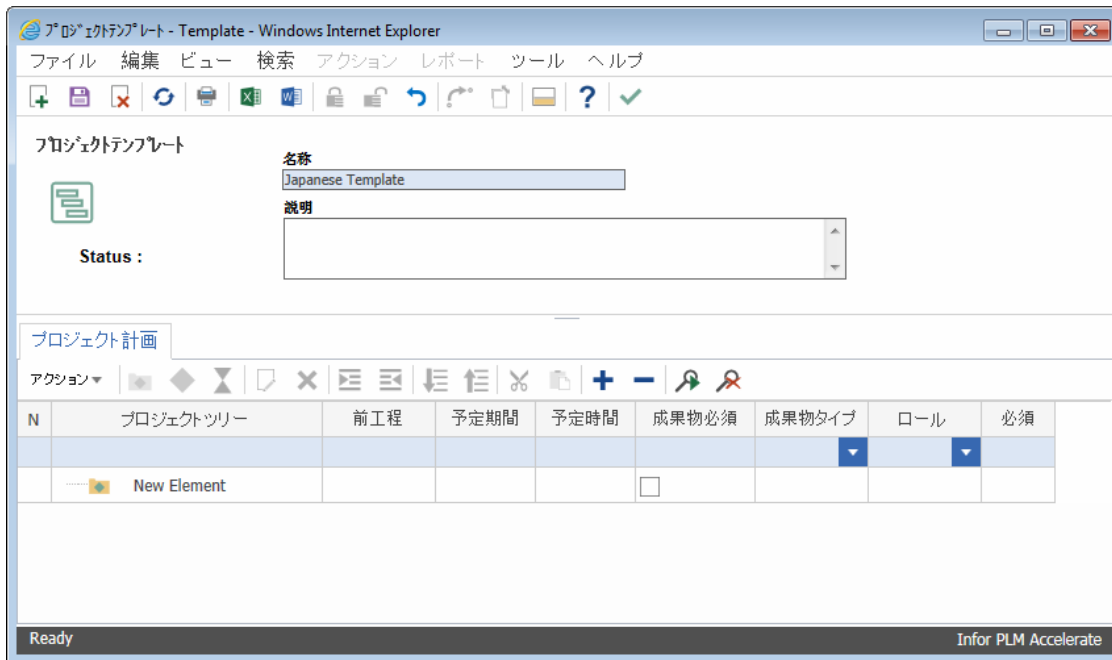


Figure 7.

The 'Project Plan' relationship for the Project Template ItemType does not behave like other standard relationships. The 'Project Plan' relationship is controlled and populated through separate HTML that populates the column names using the projectGridLayoutXML.xml file located in the \Innovator\Client\Solutions\Project\xml.ja folder. In this XML file, you can see multiple items that look like the following:

```
<Item type="PM_ProjectGridLayout">
  <!--//TreeNode-->
  <position>2</position>
  <width>200</width>
  <name>tree_node</name>
  <label>Project Tree</label>
  <is_system>1</is_system>
</Item>
```

For each Item in the projectGridLayoutXML.xml the text highlighted in yellow between the <label> tags is used as the column names of the Project Plan. After translating all of the labels save the XML and verify that your changes adhere to the Project Template form.

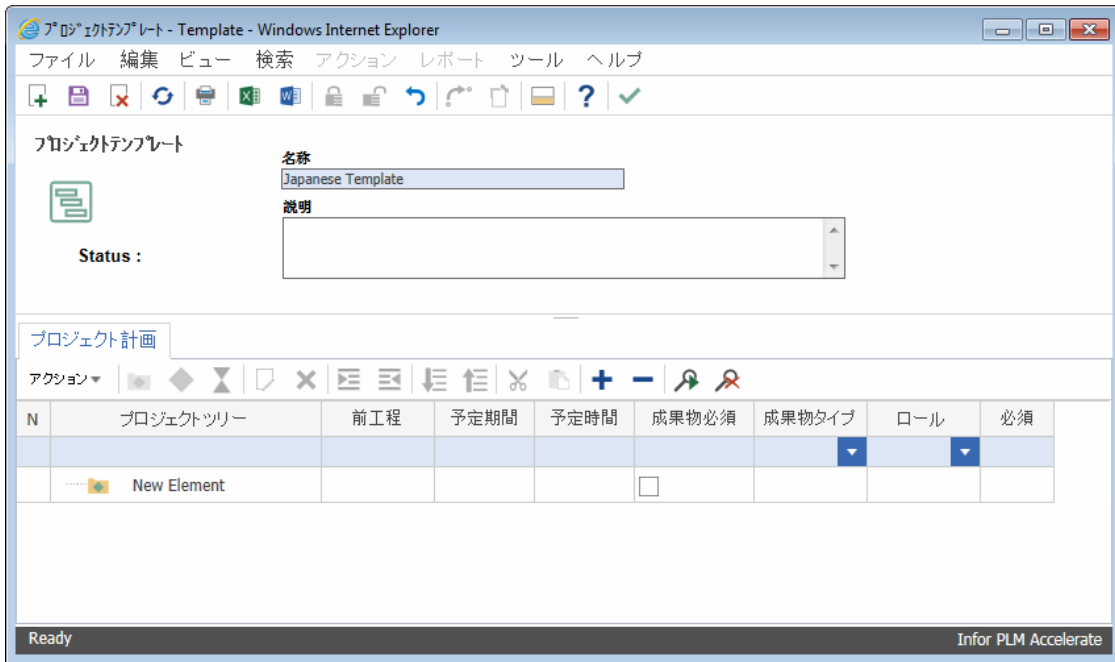


Figure 8.

'Changes' Relationship to Document and Part

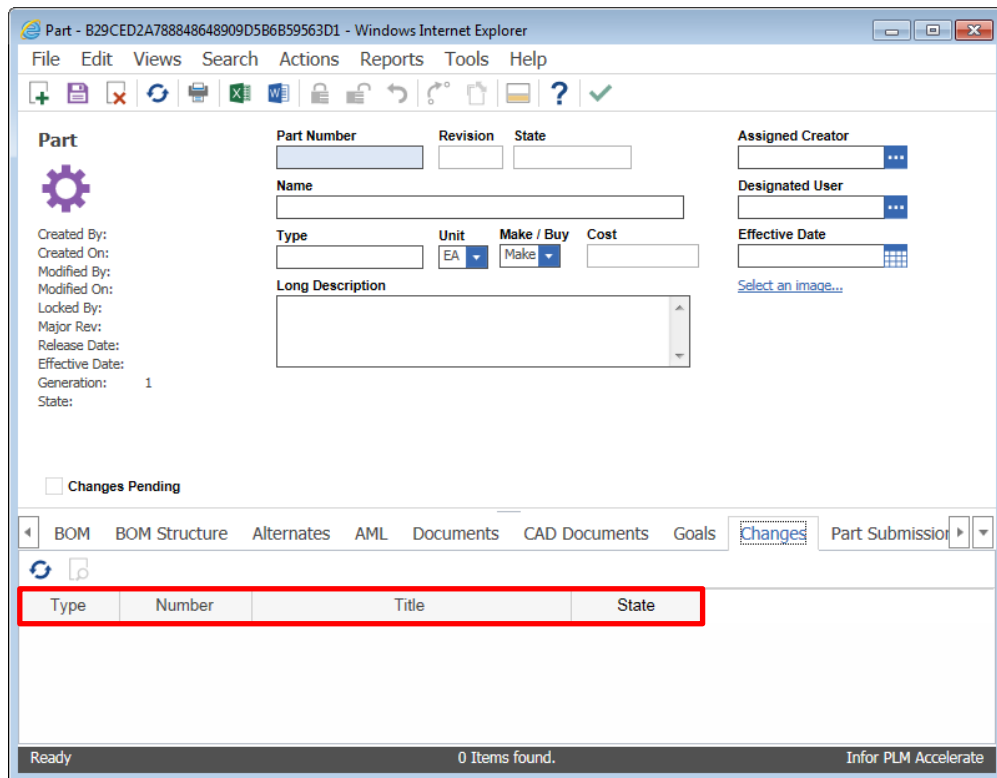


Figure 9.

Document - 0CA690482C954C719852BF2CBD8DD8DA - Windows Internet Explorer

File Edit Views Search Actions Reports Tools Help

Document

Created By:
Created On:
Modified By:
Modified On:
Locked By:
Major Rev:
Release Date:
Effective Date:
Generation: 1
State:

Document Number: [] Revision: [] State: []

Name: []

Type: [] Authoring Tool: [] Version: []

Description: []

Assigned Creator: []

Designated User: []

Effective Date: []

[Select an image...](#)

Files Attached
 Changes Pending
 Template

Files: **Changes**

Type	Number	Title	State
0 Items found.			

Ready Infor PLM Accelerate

Figure 10.

Just like the 'Project Plan' relationship described above the 'Changes' relation to the Part and Document ItemTypes does not behave like a standard relationship within Infor PLM Accelerate. The 'Changes' relationship is controlled and populated through separate HTML that populates the column names using the ChangesGrid.xml file located in the \\Innovator\Client\Solutions\PLM\xml.ja folder. In this XML file, you can see the following fields:

```
<thead>
  <th align="c">Type</th>
  <th align="c">Number</th>
  <th align="c">Title</th>
  <th align="c">State</th>
</thead>
```

The fields highlighted in yellow are the column names that are displayed for the Changes relationship. After you have translated these labels save the XML file and verify that the changes adhere to the Changes relationship for the Part and Document ItemTypes.

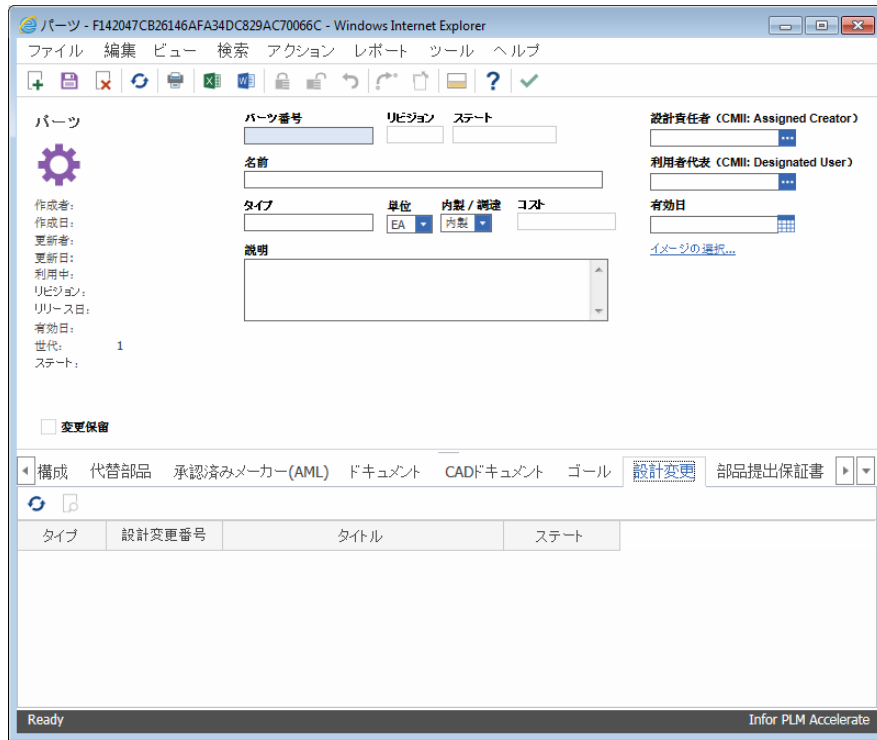


Figure 11.

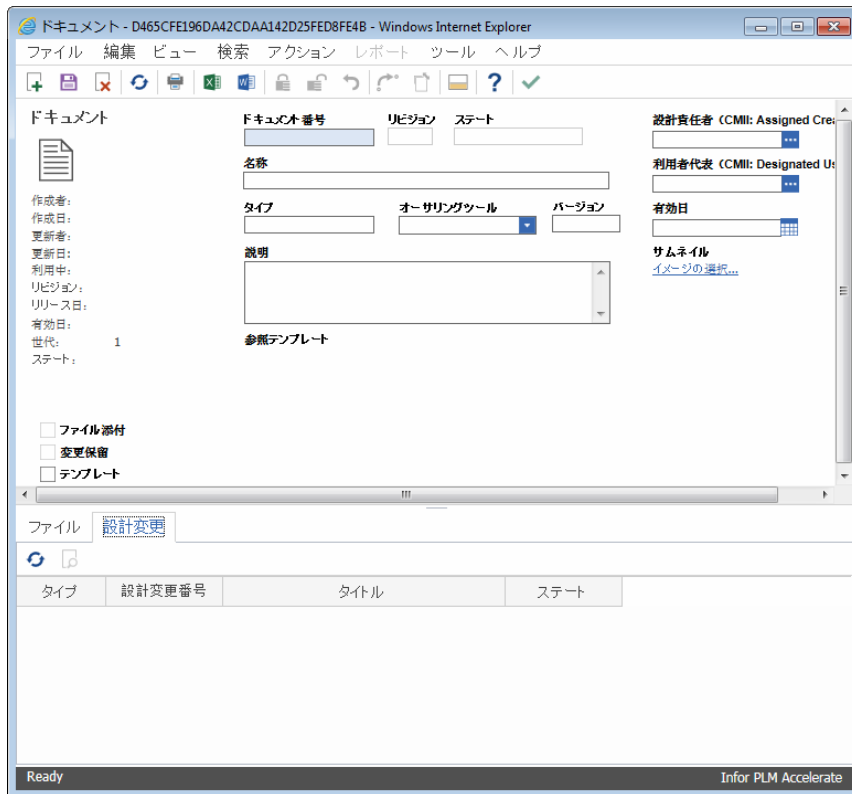


Figure 12.

Helpful Translation Tips Using the UI

In the relationship grid for Items within Infor PLM Accelerate you can see the properties of not only the related item that are visible, but also properties of the RelationshipType ItemType that are made visible as well. The trickiness of this feature arises in the fact that the label in the relationship tab does not necessarily match up with the relationship ItemType.

In the following example, we take a look at the 'Grid' ItemType. Looking at the form for the Grid ItemType you notice that there is a relationship tab that says Grid Events.

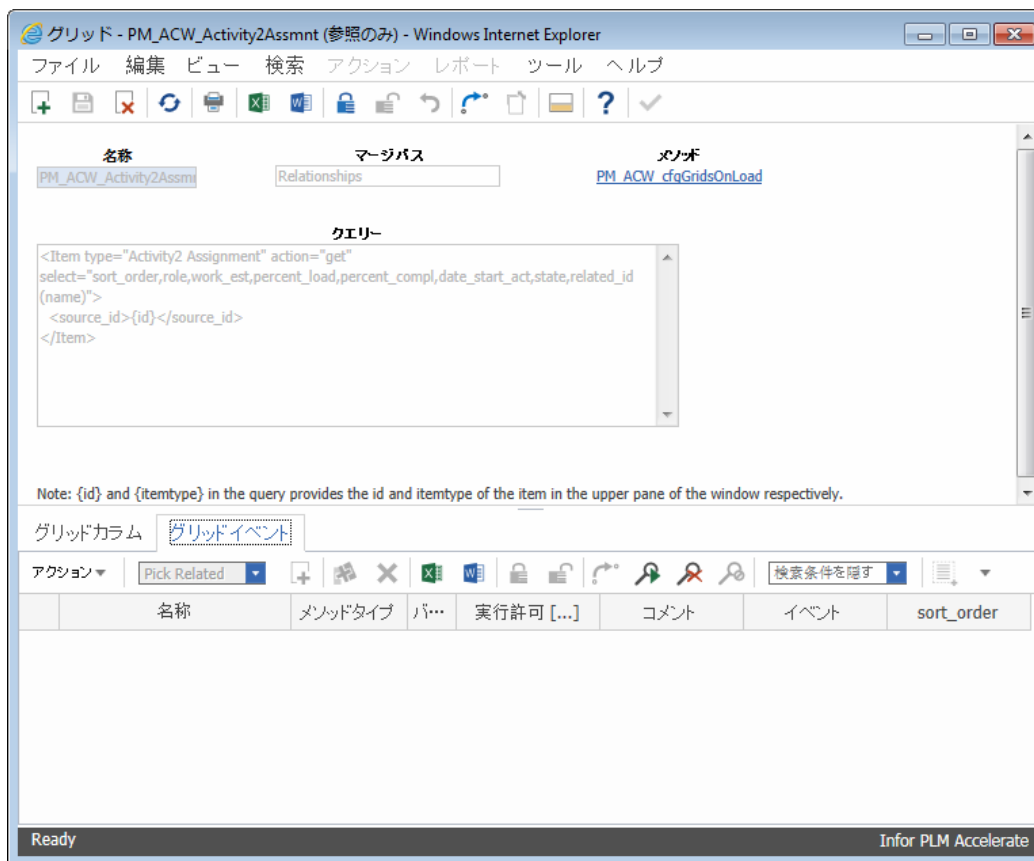


Figure 13.

If you do a search on ItemTypes, you notice that there is an ItemType called 'Grid Event'. You may have translated the `sort_order` property for the 'Grid Events' ItemType and noticed it is not translated in the Grid form. Although the relationship tab label displays 'Grid Event', the 'Grid Event' ItemType is not the relationship ItemType for the Grid -->Event relationship. The correct ItemType to edit for the Grid --> Event relationship is 'Configurable Grid Event'.

By selecting RelationshipType in the Administration branch of the TOC you can perform a search of the 'Source ItemType' to verify what the 'Relationship ItemType' is.

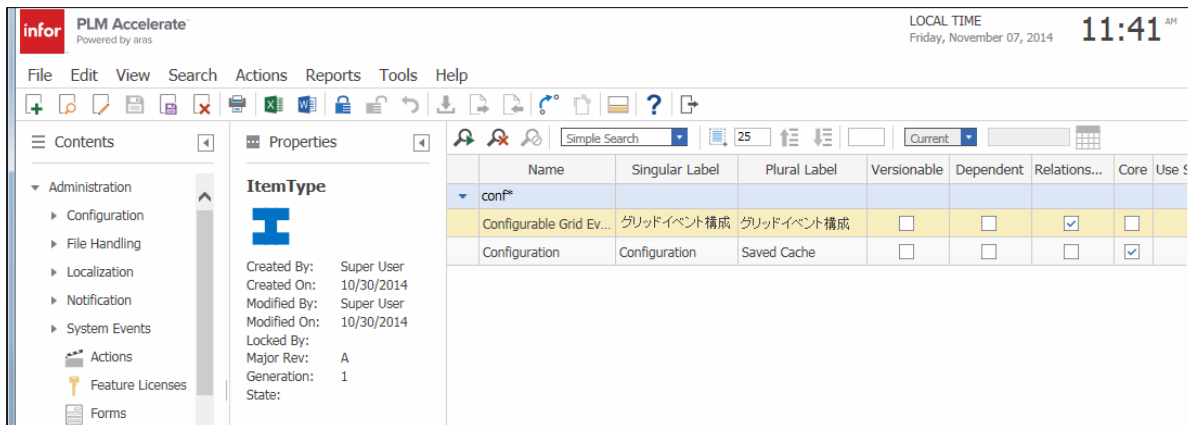


Figure 14.

After verifying the proper relationship ItemType, you need to edit the label of the necessary properties and save the ItemType. After saving the ItemType, verify that your translation adheres to the relationship grid.

Chapter 4. Appendix A

The <where> Attribute in ExportConfig.xml - Full Sample

```

<export>
  <database
    server="testserver"
    name="InnovatorSolutions_1"
    uid="innovator"
    pwd="password" />
  <languages list="en, de" />

  <itemtype name="ItemType">
    <properties list="label,label_plural,help_url" />
    <where>
      ID in (
        SELECT it.ID
        FROM ITEMTYPE AS it
        INNER JOIN TOC_ACCESS AS ta ON ta.SOURCE_ID = it.ID
        INNER JOIN [IDENTITY] AS idn ON ta.RELATED_ID = idn.ID
        WHERE (idn.NAME != 'Innovator Admin') AND (idn.NAME !=
'Administrators') AND (idn.NAME != 'Super User'))
      </where>
    </itemtype>

  <itemtype name="Action">
    <properties list="label" />
    <where>
      ID in (
        select ia.RELATED_ID
        from item_action AS ia
        WHERE (ia.SOURCE_ID IN
          (SELECT it.ID
            FROM ITEMTYPE AS it
            INNER JOIN TOC_ACCESS AS ta ON ta.SOURCE_ID = it.ID
            INNER JOIN [IDENTITY] AS idn ON ta.RELATED_ID = idn.ID
            WHERE (idn.NAME != 'Innovator Admin') AND (idn.NAME !=
'Administrators') AND (idn.NAME != 'Super User'))))
      </where>
    </itemtype>

  <itemtype name="Field">
    <properties list="label,legend" />
    <where>
      SOURCE_ID in (
        select b.ID
        from Body as b
        where b.SOURCE_ID in
          (
            SELECT f.id
  
```

```

FROM FORM AS f
INNER JOIN [VIEW] AS v ON f.ID = v.RELATED_ID
WHERE (v.SOURCE_ID IN
      (SELECT it.ID
       FROM ITEMTYPE AS it
       INNER JOIN TOC_ACCESS AS ta ON ta.SOURCE_ID = it.ID
       INNER JOIN [IDENTITY] AS idn ON ta.RELATED_ID = idn.ID
       WHERE (idn.NAME != 'Innovator Admin') AND (idn.NAME !=
'Administrators') AND (idn.NAME != 'Super User'))))
  </where>
</itemtype>

<itemtype name="Filter_Value">
  <properties list="label" />
  <where>
    (SOURCE_ID IN
      (SELECT ID
       FROM LIST
       WHERE (ID IN
             (SELECT DATA_SOURCE
              FROM PROPERTY AS pr
              WHERE (DATA_TYPE = 'list') AND (SOURCE_ID IN
                (SELECT it.ID
                 FROM ITEMTYPE AS it
                 INNER JOIN TOC_ACCESS AS ta ON ta.SOURCE_ID = it.ID
                 INNER JOIN [IDENTITY] AS idn ON ta.RELATED_ID = idn.ID
                 WHERE (idn.NAME != 'Innovator Admin') AND (idn.NAME !=
'Administrators') AND (idn.NAME != 'Super User'))))))))
  </where>
</itemtype>

<itemtype name="Grid_Column">
  <properties list="label" />
</itemtype>

<itemtype name="PM_ProjectGridLayout">
  <properties list="label" />
</itemtype>

<itemtype name="Property">
  <properties list="label" />
  <where>
    SOURCE_ID in (
      SELECT it.ID
      FROM ITEMTYPE AS it
      INNER JOIN TOC_ACCESS AS ta ON ta.SOURCE_ID = it.ID
      INNER JOIN [IDENTITY] AS idn ON ta.RELATED_ID = idn.ID
      WHERE (idn.NAME != 'Innovator Admin') AND (idn.NAME !=
'Administrators') AND (idn.NAME != 'Super User'))
  </where>
</itemtype>

```

```

<itemtype name="RelationshipType">
  <properties list="label" />
  <where>
    (SOURCE_ID IN
      (SELECT it.ID
       FROM ITEMTYPE AS it
       INNER JOIN TOC_ACCESS AS ta ON ta.SOURCE_ID = it.ID
       INNER JOIN [IDENTITY] AS idn ON ta.RELATED_ID = idn.ID
       WHERE (idn.NAME != 'Innovator Admin') AND (idn.NAME !=
'Administrators') AND (idn.NAME != 'Super User'))
    </where>
  </itemtype>

<itemtype name="Report">
  <properties list="label" />
  <where>
    ID in (
      select ir.RELATED_ID
      from item_report AS ir
      WHERE (ir.SOURCE_ID IN
        (SELECT it.ID
         FROM ITEMTYPE AS it
         INNER JOIN TOC_ACCESS AS ta ON ta.SOURCE_ID = it.ID
         INNER JOIN [IDENTITY] AS idn ON ta.RELATED_ID = idn.ID
         WHERE (idn.NAME != 'Innovator Admin') AND (idn.NAME !=
'Administrators') AND (idn.NAME != 'Super User'))))
    </where>
  </itemtype>

<itemtype name="UserMessage">
  <properties list="text" />
</itemtype>

<itemtype name="Value">
  <properties list="label" />
  <where>
    (SOURCE_ID IN
      (SELECT ID
       FROM LIST
       WHERE (ID IN
        (SELECT DATA_SOURCE
         FROM PROPERTY AS pr
         WHERE (DATA_TYPE = 'list') AND (SOURCE_ID IN
          (SELECT it.ID
           FROM ITEMTYPE AS it
           INNER JOIN TOC_ACCESS AS ta ON ta.SOURCE_ID = it.ID
           INNER JOIN [IDENTITY] AS idn ON ta.RELATED_ID = idn.ID
           WHERE (idn.NAME != 'Innovator Admin') AND (idn.NAME !=
'Administrators') AND (idn.NAME != 'Super User'))))))))
    </where>
  </itemtype>
</export>

```

Language Settings in Configurable InBasket

For instructions on setting up the Configurable InBasket to handle multiple languages, please refer to the *Infor PLM Accelerate - Configurable InBasket* guide.

Chapter 5. Appendix (Client Settings)

Defining user's Locale in Browser

Internet Explorer 11

1. Open Internet Explorer browser and go to **Tools --> Internet Options**.
2. In the **General** tab, click **Languages**.

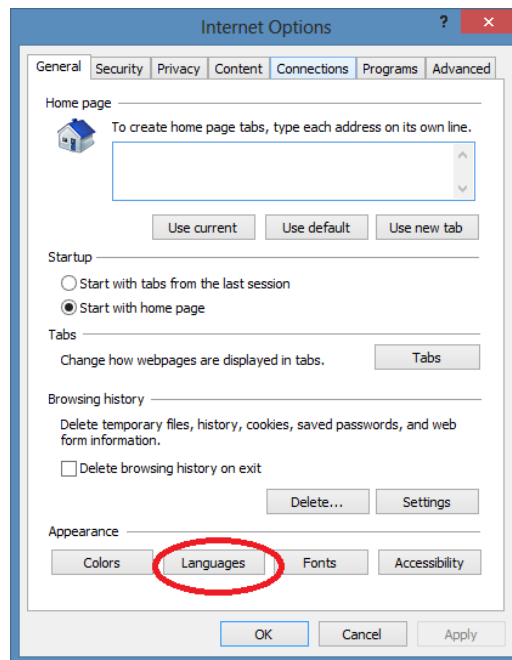


Figure 15.

3. In the **Language Preference** dialog box, click **Set Language Preferences**.

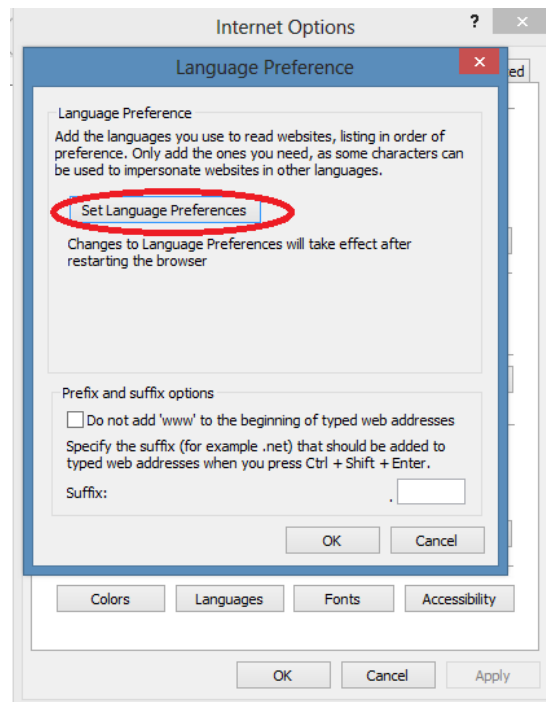


Figure 16.

4. In the **Language** dialog box, click **Add a Language**.
5. Select a language such as Japanese [ja-JP].
6. Click **Add** (bottom right corner).

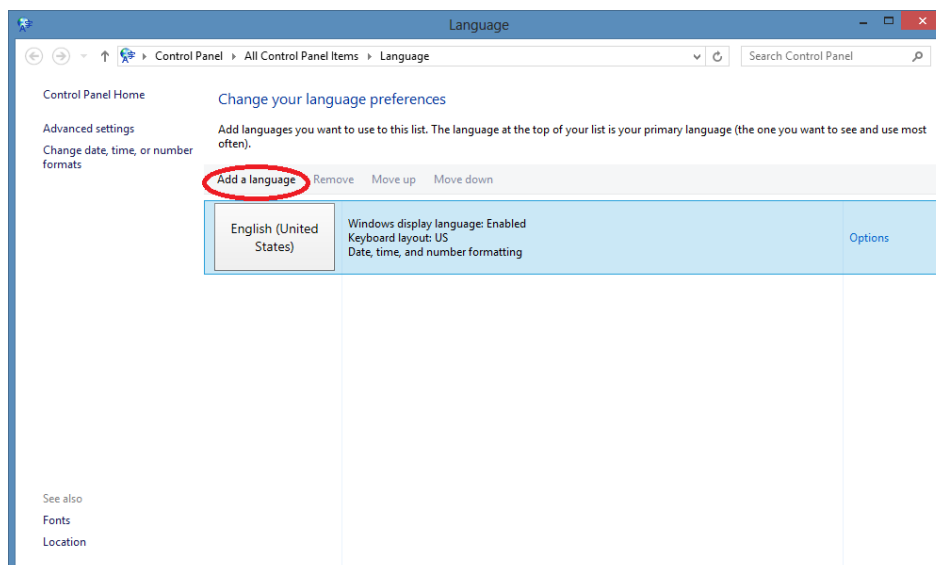


Figure 17.

7. Select **Japanese Language Box** and click **Move up** (move it to the top).

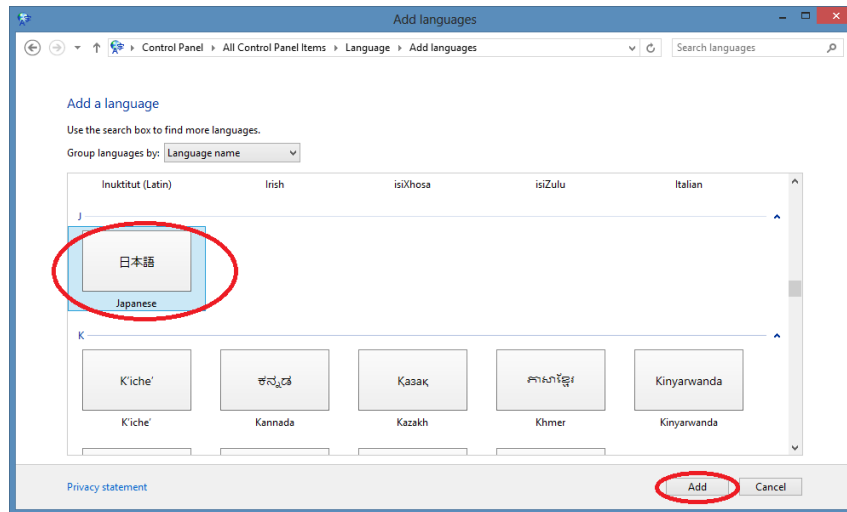


Figure 18.

8. Close the browser.
9. Login to Infor PLM Accelerate as an administrator and confirm that Japanese Language is applied.

Firefox for Windows

1. Open Firefox browser and go to **Tools --> Options**.
2. Select the **Content** tab.
3. In the **Languages** Box, click **Choose**.

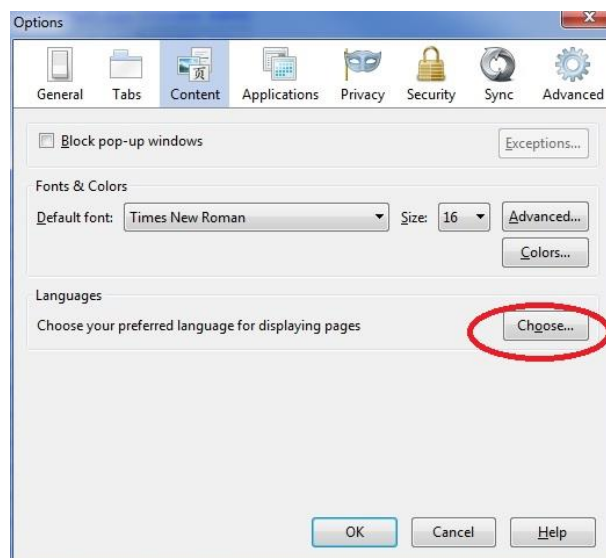


Figure 19.

4. In the **Languages** dialog box, click **Select a language to add...**
5. Select Japanese [ja] and click **Add**.

6. Move it to the top.

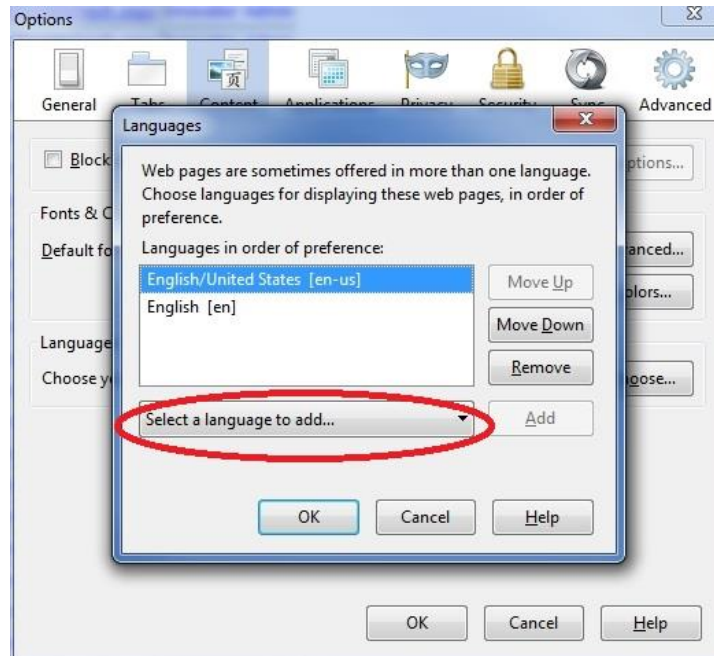


Figure 20.

7. Close the browser.
8. Login to Infor PLM Accelerate as an administrator and confirm that Japanese Language is applied.

Firefox for Mac

1. Open Firefox browser and go to **Firefox --> Preferences.**

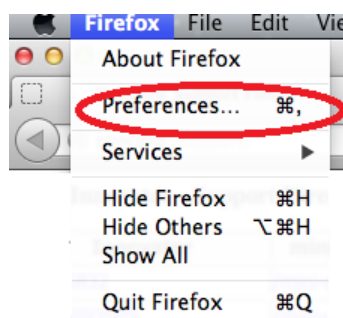


Figure 21.

2. Select the **Content** tab.
3. For **Languages**, click **Choose**.

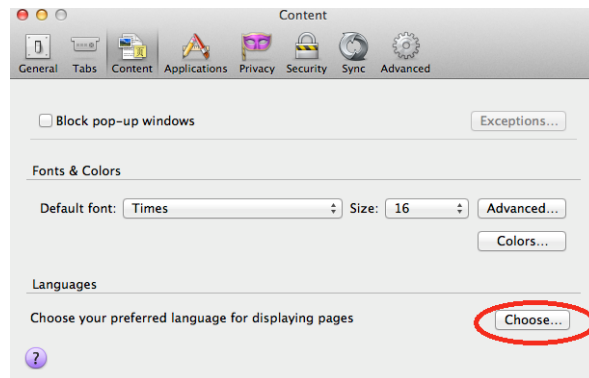


Figure 22.

4. Click **Select a language to add...**



Figure 23.

5. Select a language. For example, Japanese [ja-JP].

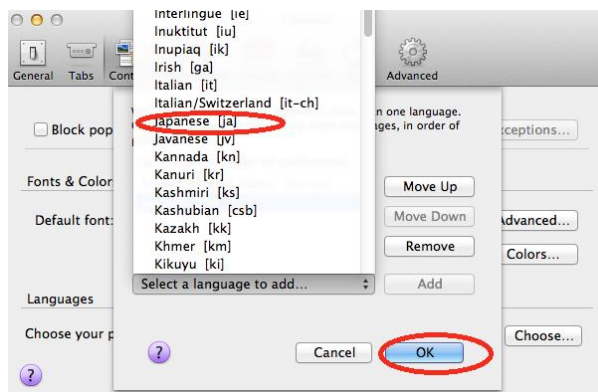


Figure 24.

6. Click **Add** and move it to the top.
7. Close the browser and login to Infor PLM Accelerate as an administrator and confirm that Japanese Language is applied.

Chrome for Windows

1. Open Chrome browser and click on the **Customize** button and select **Settings**.

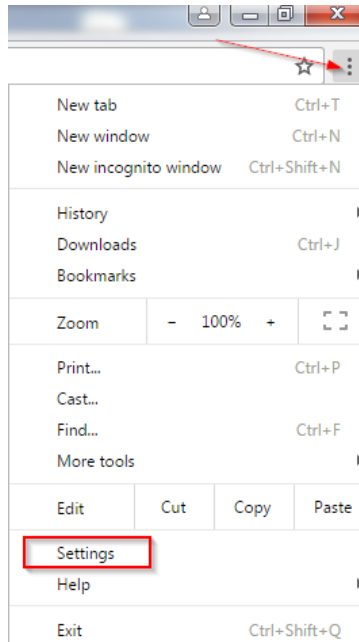


Figure 1.

1. Scroll towards the bottom and click on **Show advanced settings...**

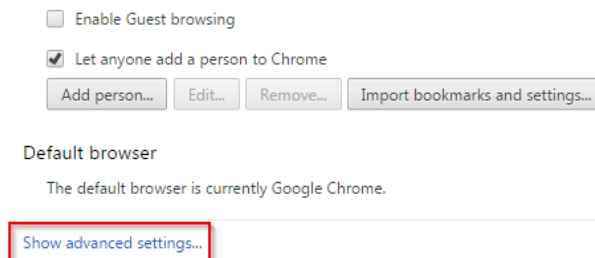


Figure 2.

2. Find the section on Languages and click on **Language and input settings...**

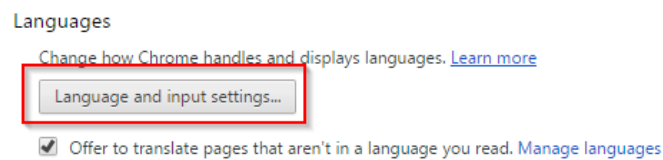


Figure 3.

3. To add a new language, click the **Add** button and select the language you wish to add.



Figure 4.

4. To change the order of language preferences, drag and drop the languages in the list or select **Display Google Chrome in this language**.

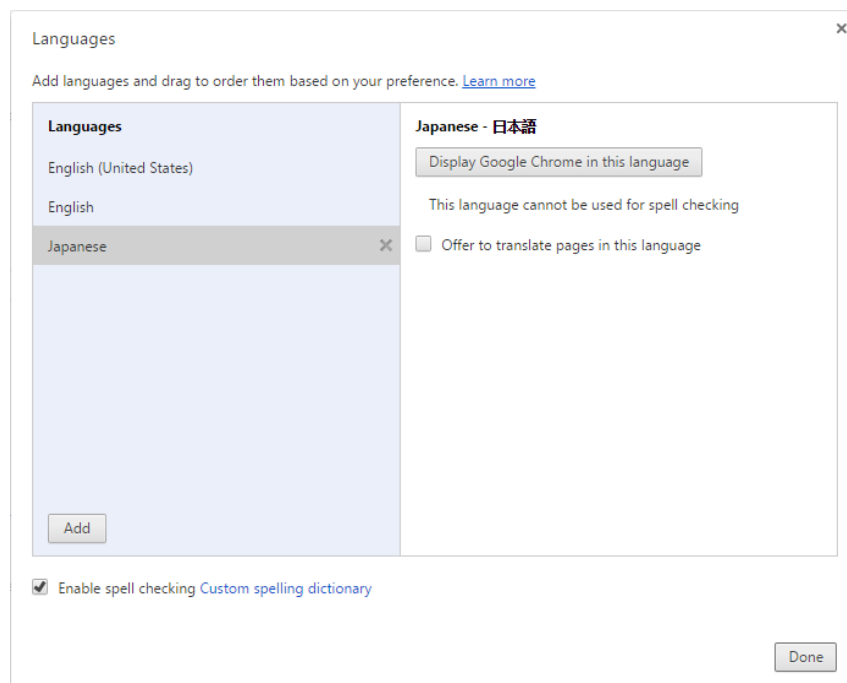


Figure 5.

Chrome for Mac

1. Open Chrome BROWSER and click on the **Customize** button and select **Settings**.

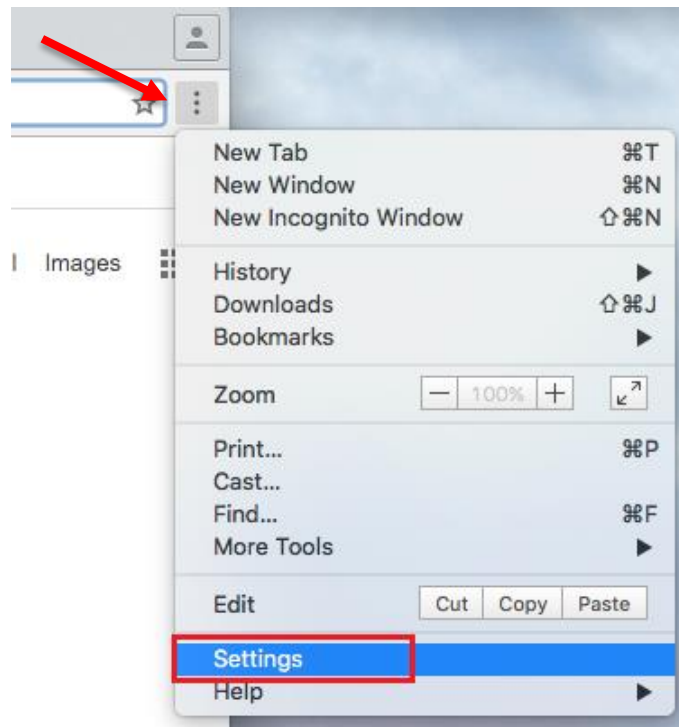


Figure 6.

2. Scroll towards the bottom and click on **Show advanced settings...**

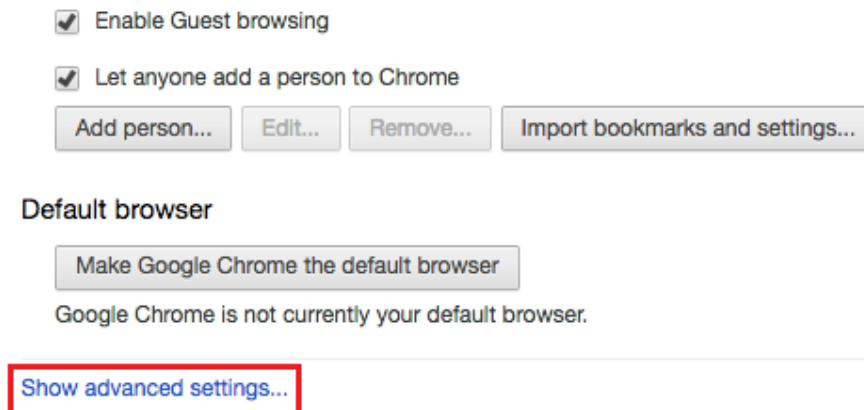


Figure 7.

3. Find the section on Languages and click on **Language and input settings...**

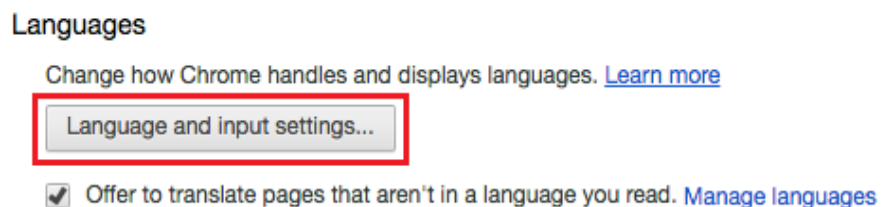


Figure 8.

- To add a new language, click the **Add** button and select the language you wish to add.

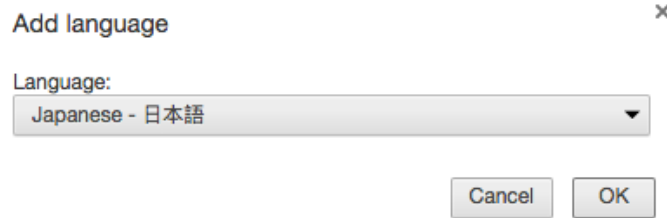


Figure 9.

- To change the order of language preferences, drag and drop the languages in the list.

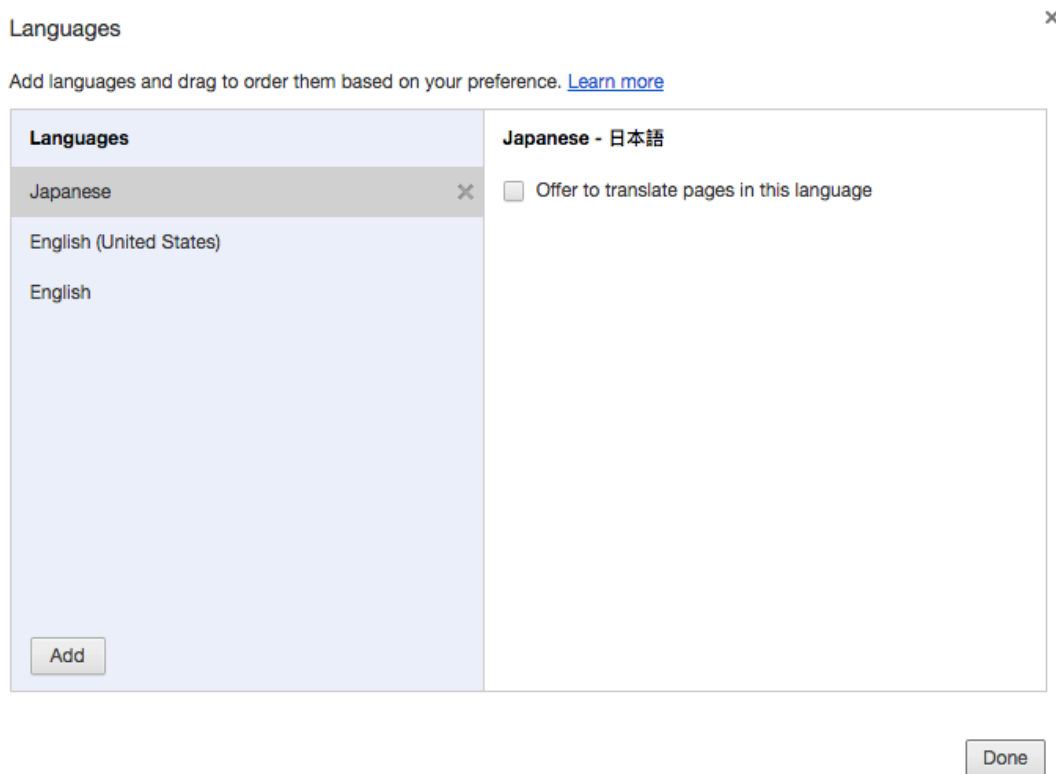


Figure 10.