



Infor PLM Accelerate 11

Conversion Server Setup Guide

Copyright © 2018 Infor

Important Notices

The material contained in this publication (including any supplementary information) constitutes and contains confidential and proprietary information of Infor.

By gaining access to the attached, you acknowledge and agree that the material (including any modification, translation or adaptation of the material) and all copyright, trade secrets and all other right, title and interest therein, are the sole property of Infor and that you shall not gain right, title or interest in the material (including any modification, translation or adaptation of the material) by virtue of your review thereof other than the non-exclusive right to use the material solely in connection with and the furtherance of your license and use of software made available to your company from Infor pursuant to a separate agreement, the terms of which separate agreement shall govern your use of this material and all supplemental related materials ("Purpose").

In addition, by accessing the enclosed material, you acknowledge and agree that you are required to maintain such material in strict confidence and that your use of such material is limited to the Purpose described above. Although Infor has taken due care to ensure that the material included in this publication is accurate and complete, Infor cannot warrant that the information contained in this publication is complete, does not contain typographical or other errors, or will meet your specific requirements. As such, Infor does not assume and hereby disclaims all liability, consequential or otherwise, for any loss or damage to any person or entity which is caused by or relates to errors or omissions in this publication (including any supplementary information), whether such errors or omissions result from negligence, accident or any other cause.

Without limitation, U.S. export control laws and other applicable export and import laws govern your use of this material and you will neither export or re-export, directly or indirectly, this material nor any related materials or supplemental information in violation of such laws, or use such materials for any purpose prohibited by such laws.

Trademark Acknowledgements

The word and design marks set forth herein are trademarks and/or registered trademarks of Infor and/or related affiliates and subsidiaries. All rights reserved. All other company, product, trade or service names referenced may be registered trademarks or trademarks of their respective owners.

Publication Information

Publication date: May 30, 2018

Contents

- Intended audience 4
- Related documents 4
- Contacting Infor..... 4
- Chapter 1. Overview 5
- Chapter 2. Server Prerequisites 6
 - Installation of Agent Service 6
 - Microsoft Visual C++ Redistributable Package 6
- Chapter 3. Installing a Conversion Server 7
 - Welcome page 7
 - Prerequisites and Documentation 8
 - Infor PLM Accelerate Destination Folder 9
 - Setup Type 10
 - Custom Setup 11
 - Conversion Server Preferences 12
 - Begin the Installation 13
 - Installation Status 14
 - Installation Completed 14
- Chapter 4. Configuring the Innovator Server 16
 - Configuration Steps 16
 - Setting up a Conversion Rule 17
- Chapter 5. Appendix 18
 - Conversion Data Model 18
 - ConversionServer 18
 - ConverterType 18
 - ConversionRule 19
 - ConversionTask 20

About this guide

This document provides information about installing, setting up and configuring the Infor PLM Accelerate™ Conversion Server.

Intended audience

This guide is intended for system administrators. This document assumes that you have at least some knowledge in:

- System architecture and function for your Infor system
- SQL Server database

For the most up-to-date list of software and hardware requirements for Infor products, see the documentation for your system.

Related documents

You can find the documents in the product documentation section of the Infor Xtreme Support portal, as described in the "Contacting Infor" section below.

Contacting Infor

If you have questions about Infor products, go to the Infor Xtreme Support portal at www.infor.com/inforxtreme.

If we update this document after the product release, we will post the new version on this Web site. We recommend that you check this Web site periodically for updated documentation.

If you have comments about Infor documentation, contact documentation@infor.com.

Chapter 1. Overview

The Infor PLM Accelerate Conversion Server is a framework to manage file conversion processes. The conversion server is not a file converter itself, but rather a way to manage tasks to be executed similar to the Infor PLM Accelerate CAD to PDF Converter that transforms native files on CAD Items into PDF files.

Chapter 2. Server Prerequisites

Table 1: Platform

Component	Platform	Revision
Operating System	MS Windows Server	<ul style="list-style-type: none"> • 2008R2 • 2012
Web Server	MS Internet Information Server	<ul style="list-style-type: none"> • 7.5 • 8
.Net	.Net Framework	4..5.2

Table 2: Configuration

System Requirement	
Processor Speed	4 physical cores and 8 logical cores
Free Disk Space	1.0 GB
Main Memory	16.0 GB
Monitor	1024 x 768 resolution with 16-bit color.

Installation of Agent Service

In order to configure the Conversion Server, the Agent Service must also be installed. For instructions on installing the Agent Service, refer to Section 5.13 of the *Installation Guide*.

Microsoft Visual C++ Redistributable Package

The Microsoft Visual C++ 2010 Redistributable Package must be installed on the Conversion Server. The links to all Microsoft Visual C++ Redistributables is below:

Microsoft Visual C++ 2010 Redistributable Package (x64):

<https://support.microsoft.com/en-us/help/2977003/the-latest-supported-visual-c-downloads>

Chapter 3. Installing a Conversion Server

To install the Conversion Server, you need to download the Infor PLM Accelerate setup (`InforPLMAccelerateSetup.msi`). The setup file may be obtained from the Infor PLM Accelerate CD Image.

Ensure that Infor PLM Accelerate installation file has been downloaded to a local hard drive of the server where the software is installed.

It is recommended not to delete the MSI file (`InforPLMAccelerateSetup.msi`) after the installation is complete.

Welcome page

Double click on the file `InforPLMAccelerateSetup.msi` to start the Infor PLM Accelerate Installer.

The first screen of the Installer is shown below.



Figure 1.

- Click **Next** to proceed with installation.
- Click **Cancel** to exit setup.

Prerequisites and Documentation

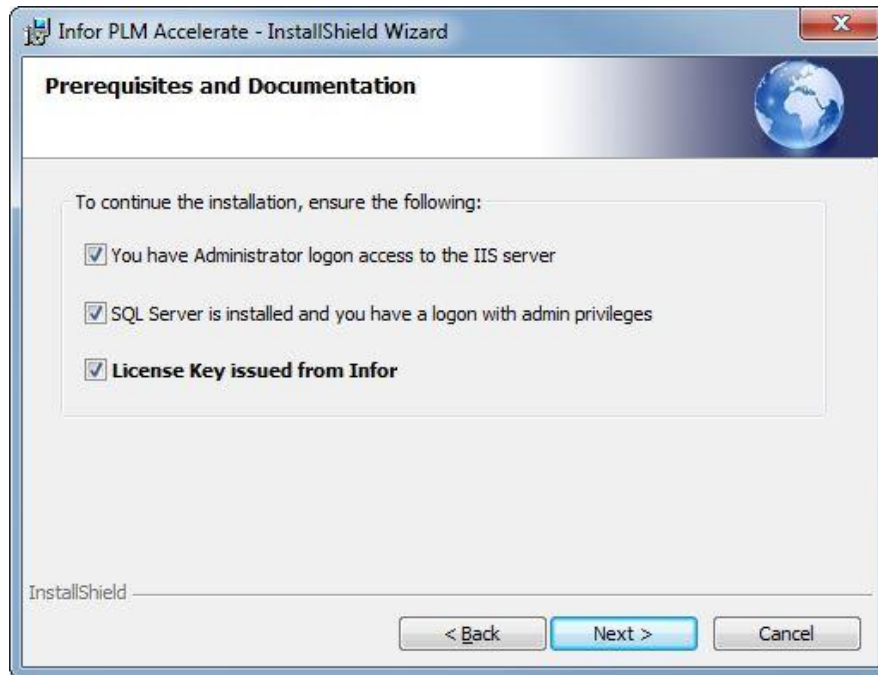


Figure 2.

Check all the three available options:

- You have Administrator login access to the IIS server: You have administrative right on the computer you are installing to, and have the IIS server installed and configured.
- SQL Server is installed and you have a login with admin privileges:
- License Key issued from Infor

The **Next** button is enabled once all the options are selected.

Note: SQL Server and the Infor PLM Accelerate License are required for the Innovator Server and not for the Conversion Server.

Request a License Key:

Enter Infor's support portal at www.infor.com/inforxtreme to request for a license key and to download any related installation documentation.

- Click **Next** to proceed with installation.
- Click **Back** to return to the previous screen.
- Click **Cancel** to exit setup.

Infor PLM Accelerate Destination Folder



Figure 3.

This screen allows you to specify the directory to which Infor PLM Accelerate should be installed. The default directory path is `C:\Program Files (x86)\Infor\Accelerate`. But, you can click **Change...** to select a directory of your choice. This document assumes the default value.

- Click **Next** to proceed with installation.
- Click **Back** to return to the previous screen.
- Click **Cancel** to exit setup.

Setup Type

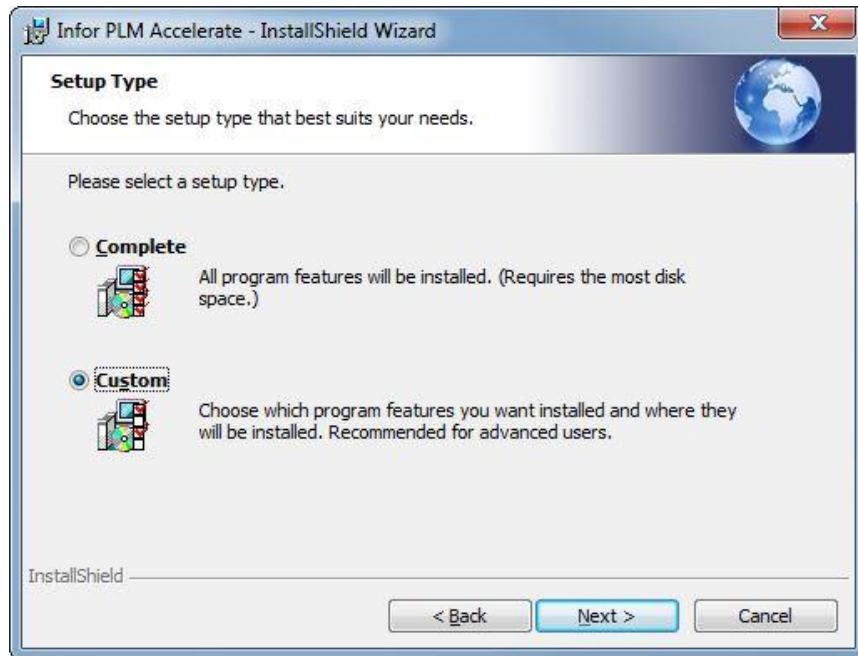


Figure 4.

Select **Custom** for the setup type.

- Click **Next** to proceed with installation.
- Click **Back** to return to the previous screen.
- Click **Cancel** to exit setup.

Custom Setup

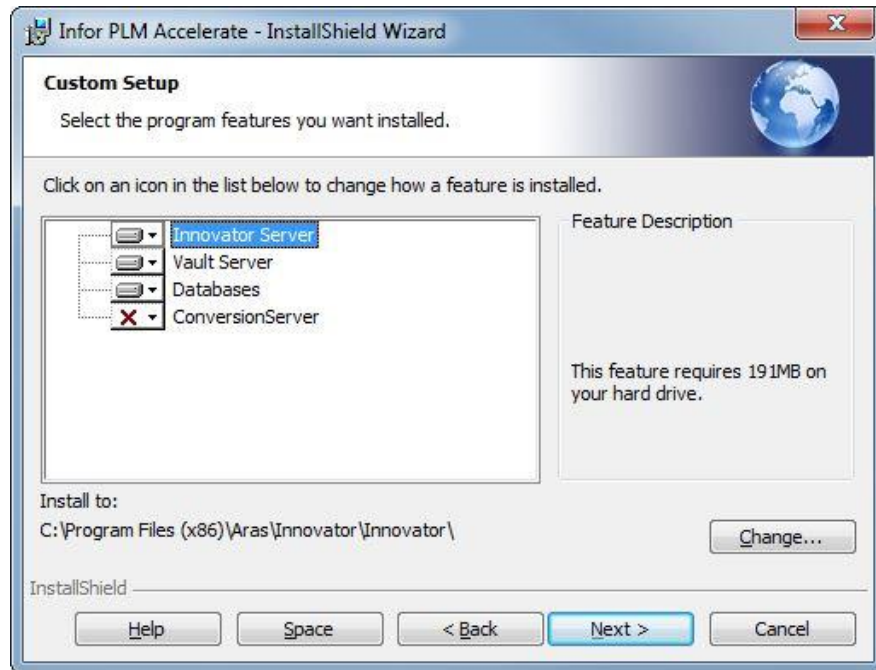


Figure 5.

Click on each of the features except **ConversionServer** and select **This feature will not be available** to disable their installation. Click on **ConversionServer** and select **This feature will be installed on local hard drive** to enable its installation

- Click **Change** to specify the install directory.
- Click **Space** to display the disk space requirements.
- Click **Back** to return to the previous screen.
- Click **Next** to proceed with installation.
- Click **Cancel** to exit setup.
- Click **Help** to display Help information tha includes Custom Setup Tips.

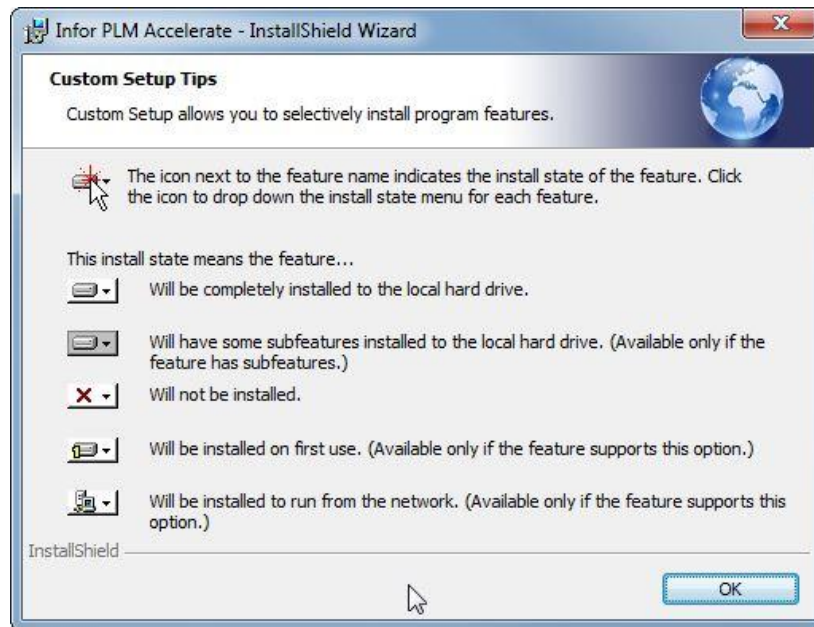


Figure 6.

Conversion Server Preferences

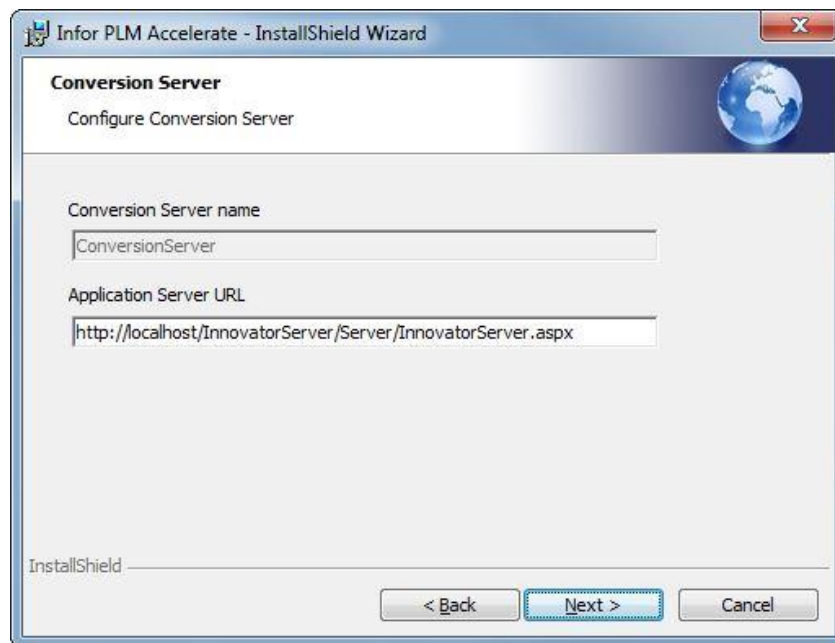


Figure 7.

- **Conversion Server Name** - The Conversion Server instance to be installed. If the Innovator Server is being installed as well, this field is disabled.

The name of the application installed in IIS. Additional Conversion Servers may be configured separately after the initial installation.

- **Application Server URL** - since Conversion Server is not a standalone application, and is useful only along with the Infor PLM Accelerate Server, this field allows you to specify the Application Server URL for the instance of Infor PLM Accelerate you are going to use with this Conversion Server. The Application Server URL is of the following format:

`http://<servername>/<web_alias>/Server/InnovatorServer.aspx`
Where:

- <servername> is the name of the server where the Innovator Server is running. For example, if running on the local machine, this is 'localhost'
 - <web_alias> is the name of the Infor PLM Accelerate Server Virtual Directory.
- Click **Next** to proceed with installation.
 - Click **Back** to return to the previous screen.
 - Click **Cancel** to exit setup.

Begin the Installation

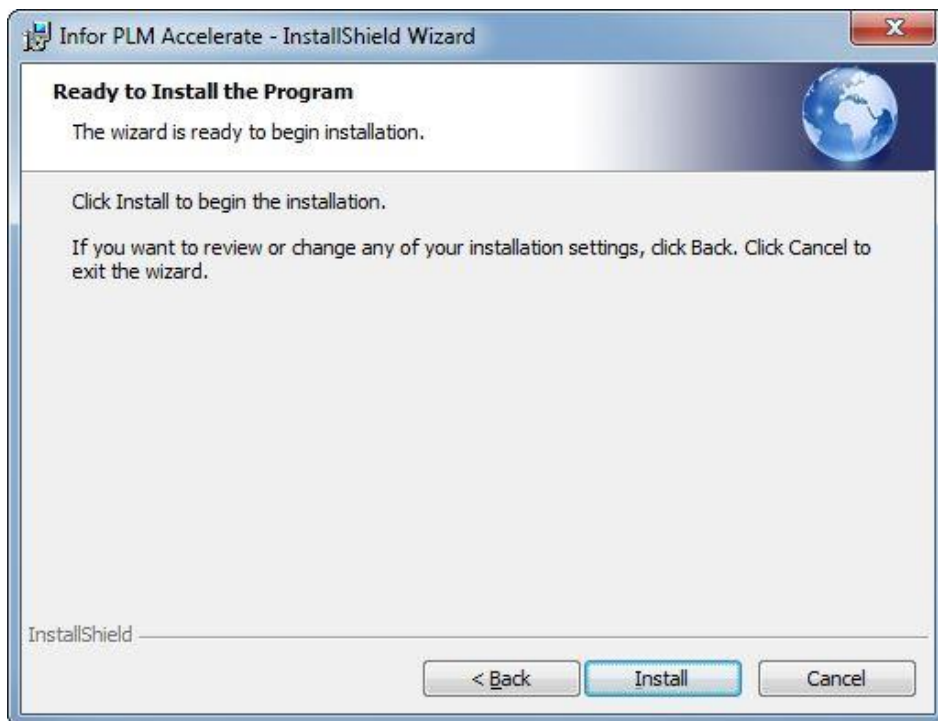


Figure 8.

- Click **Install** to start the installation of the features

Note: You cannot make any changes after you click **Install** on the screen.

- Click **Back** to return to the previous screen.

- Click **Cancel** to exit setup.

Installation Status

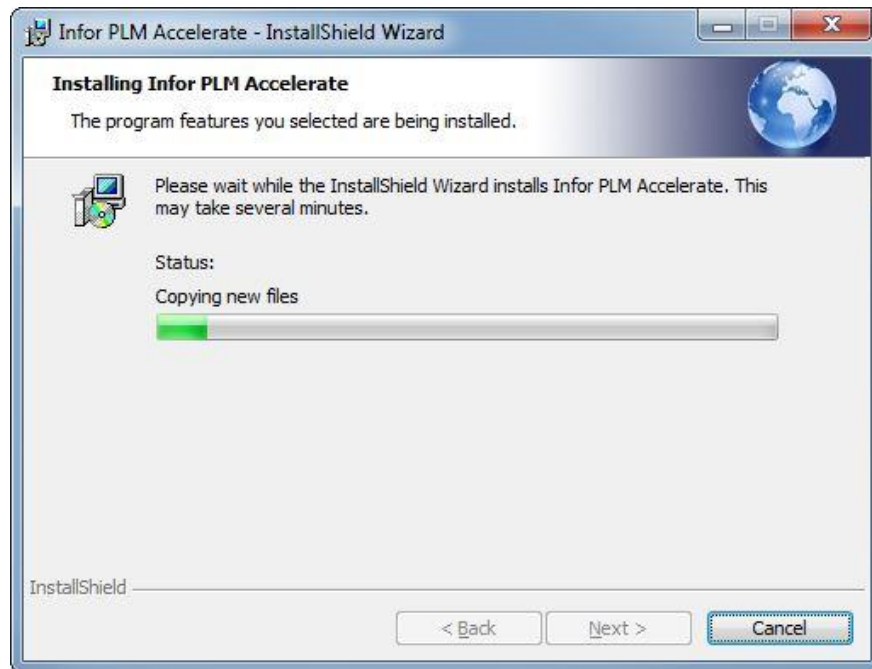


Figure 9.

This screen shows the installation status.

Installation Completed

The screen below is the last in the installation wizard.



Figure 10.

The **Go** buttons open up a web browser to Infor web pages.

<http://www.infor.com> – Location for patches, alerts, product support bulletins, additional product documentation, available training and other Infor PLM Accelerate support information.

Click **Finish** to complete the installation process and close the installer.

Note: Make sure **not** to delete your installer from your hard drive when you have finished the installation. You must reuse the same installer to install other instances of Conversion Server/Infor PLM Accelerate or its components.

Chapter 4. Configuring the Innovator Server

After installing the Conversion Server, your Innovator Server needs to be configured to communicate with it.

The following steps guide you in the configuration of the Innovator Server:

Configuration Steps

1. Open a Windows Explorer window to the root of the Agent Service
2. Open the \AgentService\conversion.config file in text editor.
3. Configure the 'cycle' tag as follows:

- a. **DB:** Infor PLM Accelerate Database
- b. **User:** admin

Another Infor PLM Accelerate User can be specified as long as they are a member of the ConversionManager Identity and they have permissions to lock dependencies of ConversionTask Item which are added by ConversionRules.

- c. **Password:** default is 'innovator' for admin
- d. **Interval:** default is 20000 (set in milliseconds)

How often the Conversion Server checks if there are Conversion Tasks that need to be processed.

- e. **MaxBatch:** default is 5

Number of Conversion Tasks that can be processed at the same time.

- f. Uncomment the tag as follows:

```
<configuration>
...
<Innovator>
  <Conversion>
    <ProcessingCycles>
      <!--cycle DB="{db}" User="{user}"
      Password="{password}" Interval="20000" MaxBatch="5" /-->
    </ProcessingCycles>
  </Conversion>
</Innovator>
</configuration>
```

Should become:

```
<configuration>
```



```

...
<Innovator>
  <Conversion>
    <ProcessingCycles>
      <cycle DB="InnovatorSolutions" User="admin"
      Password="innovator" Interval="20000" MaxBatch="5" />
    </ProcessingCycles>
  </Conversion>
</Innovator>
</configuration>

```

4. Save and close the 'conversion.config' file.
5. Log in to Infor PLM Accelerate as an Administrator.
6. Go to **Administration --> File Handling --> Conversion Servers**.
7. Open the 'Default' Conversion Server for editing or create a new Conversion Server.
8. If not filled out (New Conversion Server), enter the name and Impersonation User.
9. Hard-code the URL to the conversion server:

http://**serverName/ConversionServer**/ConversionService.asmx

Note: You must replace the highlighted text above with the location of your Conversion Server web application as specified in IIS.

10. Save, unlock, and close the Conversion Server.

Note: After making adjustments to the conversion.config file, the Agent Service should be restarted via **Control Panel --> Administrative Tools --> Services**.

Setting up a Conversion Rule

To begin converting files using the Conversion Server, you need to create or install a Conversion Rule to your instance.

If you want to setup the standard Infor PLM Accelerate CAD to PDF Converter in your instance, refer to the *Infor PLM Accelerate - CAD to PDF Converter Setup Guide*, available in the Documentation folder of the Infor PLM Accelerate CD Image.

If you are a developer and want to walk through an example of creating your own custom Conversion Rule, refer to the *Infor PLM Accelerate - Example for Developing Conversion Server Tasks*, also available in the Documentation folder of the Infor PLM Accelerate CD Image.

Chapter 5. Appendix

Conversion Data Model

This section describes the complete data model of the File Conversion feature.

ConversionServer

The 'ConversionServer' ItemType is where the URL for the Conversion Server is stored. In this regard, it is similar to the Vault ItemType.

Properties:

- **Name:** Unique name for the Conversion Server.
For example, this could describe what types of Conversions are handled by this Conversion Server, i.e. 'Cad Native Server'
- **URL:** HTTP path to the '/ConversionServer/ConversionService.asmx' file
- **Impersonation User:** Infor PLM Accelerate User that is used to perform the conversion. All Files created by the Conversion Server have their 'Created_by' as this User.

Note: The Impersonation User either must be the Vault Admin User or must be a member of the Administrators Identity.

Relationships:

- **Converters** ('ConversionServerConverterType'): Relationship to 'ConverterType'
Used to select which Converters are executed using this Conversion Server.

ConversionServerPriority

The 'ConversionServerPriority' ItemType is a Relationship from the 'Vault' ItemType to the 'ConversionServer' ItemType.

This Relationship specifies which Conversion Server to use based on the Vault that the File was added to or updated in.

ConverterType

The 'ConverterType' ItemType uses the name of the Converter to represent the Converter DLL inside of Infor PLM Accelerate.

Properties:

- **Name:** This name must match the name attribute set in the 'Converter' tag of either the '\ConversionServerConfig.xml' file as follows:

```
<ConversionServer>
```

```

    <Converters>
      <Converter name="MyConverter" ... />
    </Converters>
  </ConversionServer>

```

ConversionRule

The 'ConversionRule' ItemType is where the rules and events for the conversion are defined.

Properties:

- **Name:** Unique name to describe what the Rule does using the Conversion Server.
- **Conversion Type:** Points to the 'ConverterType' Item that performs the Conversion.
- **Description** (optional): Detailed description of the Conversion Rule
- **Timeout:** Number of minutes after which the actual converting of the physical file is considered as hung and the conversion task is marked as failed.

In other words this is the time allowed to the OnConvert event handler to return a result; suggested default is 60 minutes

- **Delay:** The delay in minutes after which a failed task can be rerun; suggested default is 5 minutes
- **Cutoff:** The number of hours that is given to a failed Conversion Task to finish successfully;
 - If the Conversion Task has status Failed for the specified number of hours, the conversion task is marked as failed and removed from the processing by the framework. The suggested default value is 24.
- **Enabled:** Boolean to enable or disable the Conversion Rule.

Relationships:

- **File Types** (ConversionRuleFileType): Relationship to 'FileType'
 - Used to specify which types of files trigger this Conversion Rule. Each FileType can be enabled or disabled using the 'Enabled' property on the Relationship.
- **Rule Events** (ConversionRuleEventHandler): Relationship to 'Method'
 - Used to specify Server-side methods that are run prior to the creation of the Conversion Task. (Event Type = OnTaskCreating)
 - These methods can then be used to check certain conditions such as the File size and prevent the Conversion Task from being created.
- **Task Event Templates**(ConversionRuleEventTemplate) : Relationship to 'Method'
 - Used to specify Server-side methods that are run at different times while the Conversion Task is processing.
 - Available Events (In order of execution):

- **OnStartTaskProcessing:** Fired right after the conversion task is created and the processing cycle gets the task for processing
- **OnBeforeConvert:** Fired right before the conversion task is ready to be sent for conversion
- **OnConvert:** Overrides the conversion event
- **OnAfterConvert:** Fired on the processing cycle iteration after the framework sets result to ConversionTaskResult

ConversionTask

'ConversionTask' Items are created automatically based on enabled Conversion Rules. Each 'Conversion Task' represents one File being converted by a Conversion Server.

All properties and relationships are automatically populated.

Properties:

- **Status:** Current status of the Task. Can be 'Not Started', 'In Progress', 'Succeeded', 'Failed', or 'Discarded'
- **Rule:** Points to the Conversion Rule that was used for the creation of this Conversion Task
- **File Type:** The type of File that is being converted
- **File:** The ID of the File being converted
- **Started On:** Date that the Conversion Task started
- **Finished On:** Date that the Conversion Task finished
- **User Data:** Text (most probably XML) that could be used by a specific converter to carry the converter specific data that has to be eventually passed to the process that performs actual conversion of the physical file (e.g. conversion options; list of supplementary files that have to be given to the converter in order to convert the file; etc.)
- **Error:** Error description in case the task status is Failed or Discarded

Relationships:

- **Dependencies** ('ConversionTaskDependency'): Null Relationship
Displays the Type and ID of Items that can be locked by methods during the processing of the Conversion Task.
- **Results** ('ConversionTaskResult'): Null Relationship
Displays the File IDs that have been created as a result of the Conversion Task and an additional string 'kind' to possibly describe why it was created / what it was created for.
- **Event Handlers** ('ConversionTaskEventHandler'): Relationship to 'Method'
 - Events copied from the 'Task Event Templates' Relationship on the 'Conversion Rule' ItemType.

- Displays the status of each Event during the processing of the Conversion Task with the following properties:
 - **Error [...]:** Error message set if the Method failed
 - **User Data [...]:** Used by the event handler to pass some information between different invocations of the event handler (e.g. in case the event handler failed it could save in this property some information about what it managed to finish before it failed so that the next invocation of the method does not try to do it again).
 - **Started On [...]:** Date when the first invocation of the method started
 - **Finished On [...]:** Date when the last invocation of the method finished
 - **Execution Attempt:** The number of times the Method has been called by this Conversion Task
 - **Status:** Current status of the Event. This can be 'Not Started', 'In Progress', 'Failed', or 'Succeeded'.