

URL Protocol Handler

infor Pathway

Rights to the Contents of this Document

All rights reserved. Information contained in this document is Copyright and proprietary to Infor and may be used or disclosed only with written permission from Infor.

This document or any part thereof may not be reproduced in any way without the written permission of Infor.

Copyright © 2025 Infor

All rights reserved. The word and design marks set forth herein are trademarks and/or registered trademarks of Infor and/or related affiliates and subsidiaries. All rights reserved. All other trademarks listed herein are the property of their respective owners.

<https://www.infor.com/en-au/products/pathway>

Feedback

Your suggestions and comments regarding this documentation are highly regarded. Please contact Infor via <https://concierge.infor.com>

Contents

Overview	4
Pre-requisites	4
Installation	4
Supported Forms	5
Customer Service Request Enquiry	6
Customer Service Request Maintenance	6
Application Enquiry	6
Application Maintenance	6
Application Bulk Maintenance	6
Licence Enquiry	7
Licence Maintenance	7
Licence Bulk Maintenance	7
Property Enquiry	7
Property Maintenance	7
Property Bulk Maintenance	7
Animal Enquiry	7
Animal Maintenance	8
Animal Bulk Maintenance	8
Assessment Enquiry	8
Assessment Maintenance	8
Assessment Bulk Maintenance	8
Tracing	8
Troubleshooting	9
The Webpage Cannot Be Displayed	9
Your Search Did Not Match Any Documents	10
Illegal Characters in Path	10

Overview

This document describes how to use the pathway custom URL protocol. After installing the pathway custom URL protocol handler URLs of the following format will automatically open forms in Pathway sessions: `pathway://database/form/entry?parameter1=value1¶meter2=value2&...`

Example: `pathway://pthprod/acrg1000/maintain?tpkacrreru=123456`

This means that such a URL can then be entered into the address bar of a web browser, run from a Windows Run prompt, clicked in a web page or opened from a third party application. In all cases a Pathway form will then be displayed in a Pathway session.

Pre-requisites

The Pathway COM API installed and working correctly. For example, opening Pathway.pth file attachments on e-mails should successfully result in a form opening in a Pathway session.

The Pathway URL Protocol Handler will only work under Windows desktop and server operating systems. For example, Windows 10 or Windows 2012. It will not work on a Windows phone device and will not work on iOS or Android devices.

If single sign-on is implemented, then either a new tab will open in an existing running Pathway session, or a new Pathway session will open automatically. However, if single sign-on is not implemented then the user will be prompted to log on to Pathway.

The Pathway URL Protocol Handler is supported in the UX client provided that the Pathway Agent has been installed with the Pathway COM API.

Installation

The following registry settings are required for the “pathway” custom URL protocol to work. They can be created by running the following executable (Pathway.Integration.Setup.exe is found in the “msc” subfolder of each Pathway environment):

```
Pathway.Integration.Setup.exe /smartclient
```

This will also automatically copy Link.exe to C:\ProgramData\Infor\Pathway\Link.exe on the client PC (Link.exe is also automatically copied to this location whenever a Pathway session is started).

```
[HKEY_CLASSES_ROOT\pathway]
@="URL:Pathway Protocol"
"URL Protocol"=""
"UseOriginalUrlEncoding"=dword:00000001

[HKEY_CLASSES_ROOT\pathway\DefaultIcon]
@="C:\\ProgramData\\Infor\\Pathway\\Link.exe"

[HKEY_CLASSES_ROOT\pathway\shell]
[HKEY_CLASSES_ROOT\pathway\shell\open]
[HKEY_CLASSES_ROOT\pathway\shell\open\command]
@="\"C:\\ProgramData\\Infor\\Pathway\\Link.exe\" /url \"%1\""
```

An attempt is also made to automatically create the following registry settings, in order to suppress first time usage Internet Explorer warnings. If these registry settings are absent then it does not matter, users will simply see security warning dialogs the first time they open a “pathway” URL.

```
[HKEY_LOCAL_MACHINE\Software\Microsoft\Internet Explorer\ProtocolExecute\pathway]
"WarnOnOpen"=dword:00000000
```

```
[HKEY_LOCAL_MACHINE\Software\Wow6432Node\Microsoft\Internet Explorer\ProtocolExecute\pathway]
"WarnOnOpen"=dword:00000000
```

```
[HKEY_LOCAL_MACHINE\Software\Microsoft\Internet Explorer\Low Rights\ElevationPolicy\{B13745B6-33C1-4DB4-9FC8-C06A1C13AEA2}]
"AppPath"="C:\\ProgramData\\Infor\\Pathway"
"AppName"="Link.exe"
"Policy"=dword:00000003
```

```
[HKEY_LOCAL_MACHINE\Software\Wow6432Node\Microsoft\Internet Explorer\Low Rights\ElevationPolicy\{B13745B6-33C1-4DB4-9FC8-C06A1C13AEA2}]
"AppPath"="C:\\ProgramData\\Infor\\Pathway"
"AppName"="Link.exe"
"Policy"=dword:00000003
```

If Pathway.Integration.Setup.exe fails with any errors then try again also specifying the working directory of the Pathway environment. This should be tried because versions earlier than 1.14 of Pathway.Integration.Setup.exe did not automatically determine the Pathway environment's working directory.

Example:

```
Pathway.Integration.Setup.exe /smartclient /working "\\MYSERVER\MyShare\Pathway\Production"
```

Supported Forms

The following enquiry and maintenance forms can be started using URLs in the format specified below:

- Customer Service Request Enquiry (acrg1000)
- Customer Service Request Maintenance (acrg1000)
- Application Enquiry (lapg6900)
- Application Maintenance (lapg6900)
- Application Bulk Maintenance (lapf6900)
- Licence Enquiry (llcg6900)
- Licence Maintenance (llcg6900)
- Licence Bulk Maintenance (llcf6900)
- Property Enquiry (lpag0010)
- Property Maintenance (lpag0010)
- Property Bulk Maintenance (lpaf6000)
- Animal Enquiry (lang1000)
- Animal Maintenance (lang1000)
- Animal Bulk Maintenance (lanf1000)
- Assessment Enquiry (lrag1010)
- Assessment Maintenance (lrag1010)
- Assessment Bulk Maintenance (lraf1010)

Either a thick client or smart client session will automatically start as determined by user preferences, as specified in the System Administration - System Parameters - PTH Preference Maintenance menu option in the smart client; also see the CIFPTHP table in the database. In most cases if a smart client session is already running then that existing session will be used to display the form.

The database specified in each of the following URLs corresponds to the name of the SQL Server or Oracle database used by the Pathway environment. This is the same name as used by the Pathway

COM API to uniquely identify Pathway environments. In SQL Server the database associated with the Production environment is typically named pthprod and the database associated with the Test environment is typically named pthtest.

NOTE: The URLs here are typically case insensitive, however, for consistency it is recommended that lowercase is used whenever possible.

Customer Service Request Enquiry

pathway://database/acrg1000/display?tpkacrreru=number

Where number is the value from the tpkacrreru column of a customer service request record in the acrreru table.

Example: pathway://pthprod/acrg1000/display?tpkacrreru=104729.

Customer Service Request Maintenance

pathway://database/acrg1000/maintain?tpkacrreru=number

Where number is the value from the tpkacrreru column of a customer service request record in the acrreru table.

Example: pathway://pthprod/acrg1000/maintain?tpkacrreru=104729.

Application Enquiry

pathway://database/lapg6900/display?enquiry=1&tpklapclas=classnumber&tpklapappl=number

Where classnumber is a value from the tpklapclas column of an application class record in the lapclas table. And where number is a value from the tpklapappl column of an application record in the lapappl table. The application specified by number must be for the same application class as specified by classnumber.

Example: pathway://pthprod/lapg6900/display?enquiry=1&tpklapclas=541&tpklapappl=104733.

Application Maintenance

pathway://database/lapg6900/display?tpklapclas=classnumber&tpklapappl=number

Where classnumber is a value from the tpklapclas column of an application class record in the lapclas table. And where number is a value from the tpklapappl column of an application record in the lapappl table. The application specified by number must be for the same application class as specified by classnumber.

Example: pathway://pthprod/lapg6900/display?tpklapclas=541&tpklapappl=104733.

Application Bulk Maintenance

pathway://database/lapf6900/pthlink?tpklapclas=classnumber&appltpklist=number,number,number,...

Where classnumber is a value from the tpklapclas column of an application class record in the lapclas table. And where each number is a value from the tpklapappl column of an application record in the lapappl table. All applications specified by number must be for the same application class as specified by classnumber.

Example: pathway://pthprod/lapf6900/pthlink?tpklapclas=541&appltpklist=104733,1779,93179,3571.

Licence Enquiry

pathway://database/llcg6900/display?enquiry=1&tpklapclas=classnumber&tpklapappl=number

Where classnumber is a value from the tpklpaclas column of a licence class record in the lapclas table. And where number is a value from the tpklapappl column of a licence record in the lapappl table. The licence specified by number must be for the same licence class as specified by classnumber.

Example: pathway://pthprod/llcg6900/display?enquiry=1&tpklapclas=229&tpklapappl=104731.

Licence Maintenance

pathway://database/llcg6900/display?enquiry=1&tpklapclas=classnumber&tpklapappl=number

Where classnumber is a value from the tpklpaclas column of a licence class record in the lapclas table. And where number is a value from the tpklapappl column of a licence record in the lapappl table. The licence specified by number must be for the same licence class as specified by classnumber.

Example: pathway://pthprod/llcg6900/display?enquiry=1&tpklapclas=229&tpklapappl=104731.

Licence Bulk Maintenance

pathway://database/llcg6900/pthlink?tpklapclas=classnumber&appltpklist=number,number,number,...

Where classnumber is a value from the tpklpaclas column of a licence class record in the lapclas table. And where each number is a value from the tpklapappl column of a licence record in the lapappl table. All licences specified by number must be for the same licence class as specified by classnumber.

Example: pathway://pthprod/llcg6900/pthlink?tpklapclas=229&appltpklist=104731,1781,93181,59359.

Property Enquiry

pathway://database/lpag0010/maintain?enquiry=1&tpklpaprop=number

Where number is a value from the tpklpaprop column of a property record in the lpaprop table.

Example: pathway://pthprod/lpag0010/maintain?enquiry=1&tpklpaprop=104737.

Property Maintenance

pathway://database/lpag0010/maintain?tpklpaprop=number

Where number is a value from the tpklpaprop column of a property record in the lpaprop table.

Example: pathway://pthprod/lpag0010/maintain?tpklpaprop=104737.

Property Bulk Maintenance

pathway://database/lpag6000/pthlink?multiselect=1&proptpklist=number,number,number,...

Where each **number** is a value from the tpklpaprop column of a property record in the lpaprop table.

For example: pathway://pthprod/lpag6000/pthlink?multiselect=1&proptpklist=104737,81787.

Animal Enquiry

pathway://database/lang1000/maintain?enquiry=1&tpklananml=number

Where number is a value from the tpklanaml column of an animal record in the lanaml table.

Example: pathway://pthprod/lang1000/maintain?enquiry=1&tpklanaml=104739.

Animal Maintenance

pathway://database/lang1000/maintain?tpklanaml=number

Where number is a value from the tpklanaml column of an animal record in the lanaml table.

Example: pathway://pthprod/lang1000/maintain?tpklanaml=104739.

Animal Bulk Maintenance

pathway://database/lanf1000/pthlink?multiselect=1&anmltpklist=number,number,number,...

Where each number is a value from the tpklanaml column of an animal record in the lanaml table.

Example: pathway://pthprod/lanf1000/pthlink?multiselect=1&anmltpklist=104739,81789,93189.

Assessment Enquiry

pathway://database/lrag1010/maintain?enquiry=1&tpklaassm=number

Where number is a value from the tpklaassm column of an assessment record in the lraassm table.

Example: pathway://pthprod/lrag1010/maintain?enquiry=1&tpklaassm=104741.

Assessment Maintenance

pathway://database/lrag1010/maintain?tpklaassm=number

Where number is a value from the tpklaassm column of an assessment record in the lraassm table.

Example: pathway://pthprod/lrag1010/maintain?tpklaassm=104741.

Assessment Bulk Maintenance

pathway://database/lraf1010/pthlink?assmtpklist=number,number,number,...

Where each number is a value from the tpklaassm column of an assessment record in the lraassm table.

For example: pathway://pthprod/lraf1010/pthlink?assmtpklist=104741,81791,93191,48611,70657.

Tracing

Link.exe logs its activity to a rolling log file located in the same folder as Link.exe:

C:\ProgramData\Infor\Pathway\Pathway.Link.user.log

where user is the name of the currently logged on Windows user.

The log file is automatically trimmed whenever it grows large. A portion of the trimmed text is temporarily moved to Pathway.Link.**user**.Archived.log. This is intended to minimise the disk space used by logging while still providing easy access to troubleshooting information.

The log file can be automatically displayed in Notepad by adding "&trace=1" to the URL.

Example: pathway://pthprod/acrg1000/maintain?tpkacrequ=123456&trace=1

Troubleshooting

Link.exe relies on the Pathway COM API having been installed and functioning correctly. For example, if the Pathway COM API is functioning correctly then it should be possible for users to open Pathway.pth file attachments on e-mails (and have either the Pathway thick client or smart client automatically start up).

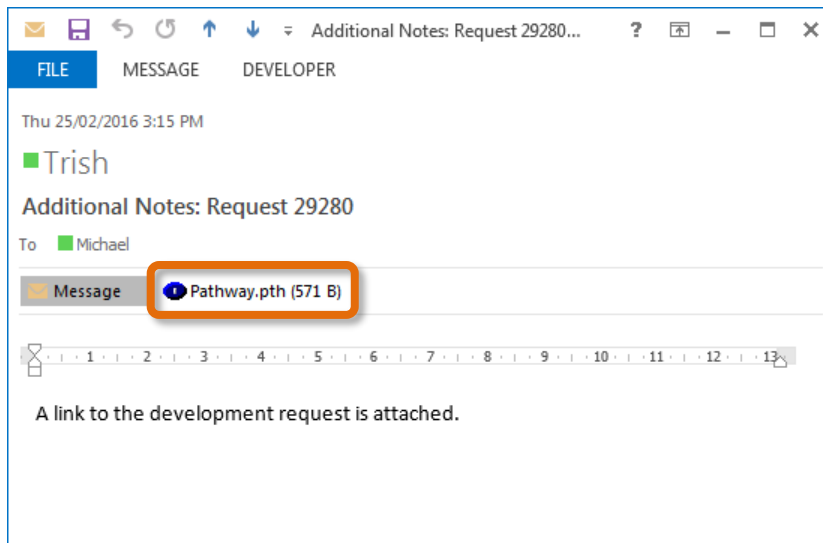


Image 1

The Webpage Cannot Be Displayed

If the pathway custom URL protocol handler is not installed, then Internet Explorer will appear (assuming it is the default web browser in Windows) and display the message The webpage cannot be displayed, Image 2 and Some content or files on this webpage require a program that you don't have installed. The address bar will contain the attempted URL.

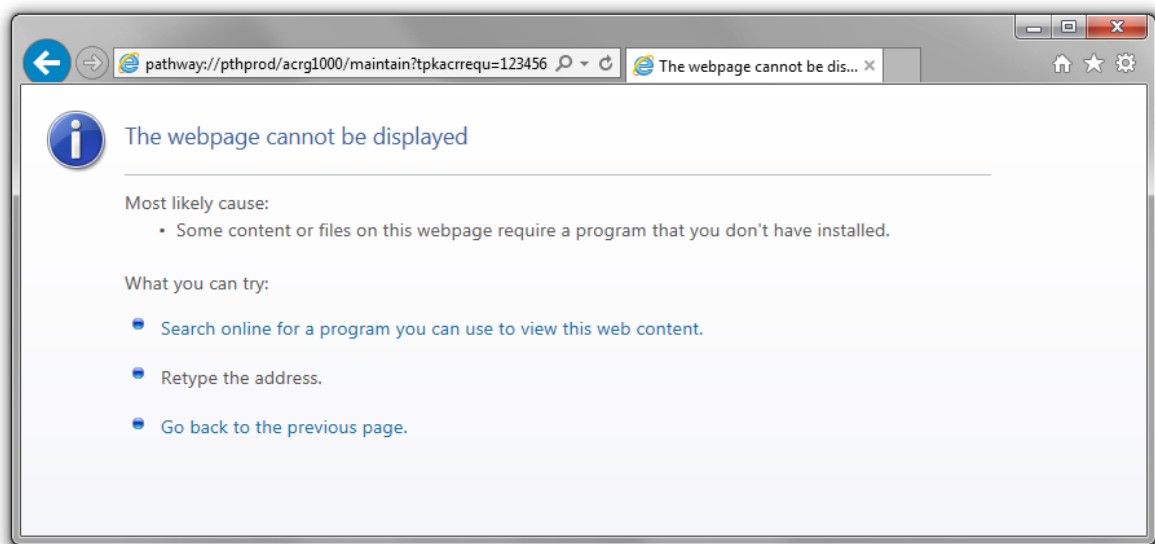


Image 2

To resolve this problem, register the pathway custom URL protocol handler using either of the following commands while logged on to Windows as any user with enough permissions to update HKEY_CLASSES_ROOT in the Windows registry:

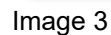
Pathway.Integration.Setup.exe /smartclient

OR

C:\ProgramData\Infor\Pathway\Link.exe /register

NOTE: Pathway.Integration.Setup.exe can be found in the msc subfolder of any Pathway environment.

If a pathway:// URL is typed or pasted into the address box of Google Chrome and Enter is pressed then Google Chrome will attempt to do a Google search using the pathway:// URL rather than opening Pathway, Image 3. A workaround is to press Ctrl+Enter instead of Enter.



If a version of Link.exe older than 1.13 exists in the following location on the client machine, then Link.exe will report Illegal characters in path errors, Image 4:

NOTE: that an older version of Link.exe such as this might be copied into place if a Pathway session is started in an environment which is at version 3.10.004 or earlier (for example, a Test environment).

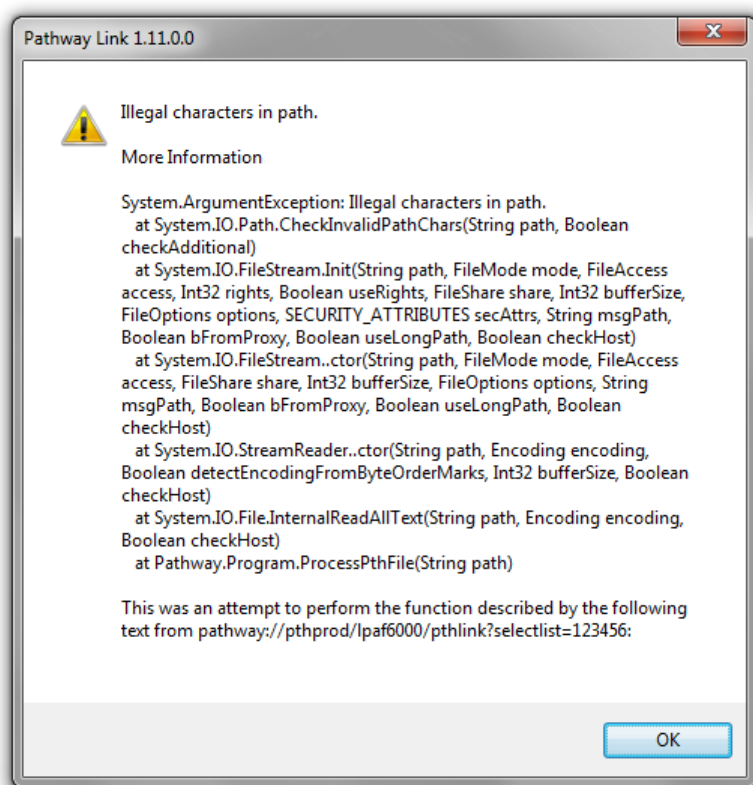


Image 4

To resolve this problem ensure that the latest cumulative fix is applied to all Pathway environments. Alternatively, manually copy version 1.13 or later of Link.exe into the msc subfolder of each older Pathway environment (Link.exe is highly backwards compatible and so is safe to copy into older Pathway environments). Also ensure that Link.exe version 1.13 or later is present on all client machines at C:\ProgramData\Infor\Pathway\Link.exe.