

Pathway GIS Interfacing Overview



Rights to the contents of this document

All rights reserved. Information contained in this document is Copyright and proprietary to Infor Public Sector and may be used or disclosed only with written permission from Infor Public Sector.

This document or any part thereof may not be reproduced in any way without the written permission of Infor Public Sector.

Feedback

Your suggestions and comments regarding this documentation are highly regarded. Please send or fax any suggestions to your Infor Public Sector office – lghelpdesk@infor.com.

SOUTH AUSTRALIA

PO Box 360
Goodwood SA 5034
Tel: +61 8 8372 6111
Fax: +61 8 8372 6199

NEW SOUTH WALES

Level 3,
40 Miller Street
North Sydney, NSW 2060
Tel: +61 2 9021 7100
Fax: +61 2 9021 7298

NEW ZEALAND

Infor Public Sector NZ
93 Grafton Road
PO Box 2733
Auckland, NZ
Tel: +64 9 309 1860
Fax: +64 9 356 1860

VICTORIA

Level 8, 1 Southbank Blvd
Southbank, Vic 3006
Tel: +61 3 8608 8500
Fax: +61 3 8608 8599

QUEENSLAND

Level 13, 50 Cavill Avenue
Surfers Paradise, QLD 4217
Tel: +61 7 5635 4344

Pathway 3.09 (Thick Client Version)

Copyright © 2014 Infor.

All rights reserved. The word and design marks set forth herein are trademarks and/or registered trademarks of Infor and/or related affiliates and subsidiaries. All rights reserved. All other trademarks listed herein are the property of their respective owners. www.infor.com.

Table of Contents

PATHWAY GIS INTERFACING OVERVIEW

PATHWAY GIS INTERFACING OVERVIEW	4
SETUP REQUIRED.....	6
FUNCTIONAL OVERVIEW	9
<i>Pathway GIS User Security</i>	11
<i>GIS to Pathway</i>	12
Display in Pathway	12
Display Other Module in Pathway	12
Create Pathway Query	13
Create Other Module Pathway Query	14
Return to Pathway	15
Create Link in Pathway	15
<i>Pathway to GIS</i>	17
Activate GIS Product	17
Display on GIS Product	17
Display Pathway Query on GIS Product.....	18
APPLICATION SPECIFIC OVERVIEW	19
<i>Property Administration</i>	21
Property GIS Filtering.....	21
Examples	21
<i>Workflow System Action</i>	24
Examples	24
<i>Applications</i>	25
Applications GIS Filtering	25
Examples	25
<i>Licencing</i>	27
Licencing GIS Filtering	27
Examples	27
<i>Animal Control</i>	29
Animals GIS Filtering.....	29
<i>Infringements</i>	30
Infringements GIS Filtering.....	30
<i>Customer Service</i>	31
Customer Service GIS Filtering.....	31
<i>Rates Accounting / Water Billing</i>	32
Rates GIS Filtering.....	32
Examples	32
<i>Other Functionality</i>	34

Pathway GIS Interfacing Overview

The purpose of this document is to give an overview of the GIS Interfacing capabilities of Pathway. It covers the setup required within Pathway and the GIS Product as well as the functionality that can be achieved with the interface. This document does not cover the technical requirements for implementing an interface between Pathway and a GIS Product and does not go into detail about interfacing to every GIS Product. This document is also not intended to be a definitive user guide, it is an overview of the capabilities of Pathway with an interfaced GIS Product.

Setup Required

The first thing to decide when setting up an interface between Pathway and a GIS Product is which level or levels to link. Pathway allows for a map layer within the GIS Product to be linked at one of the following levels:

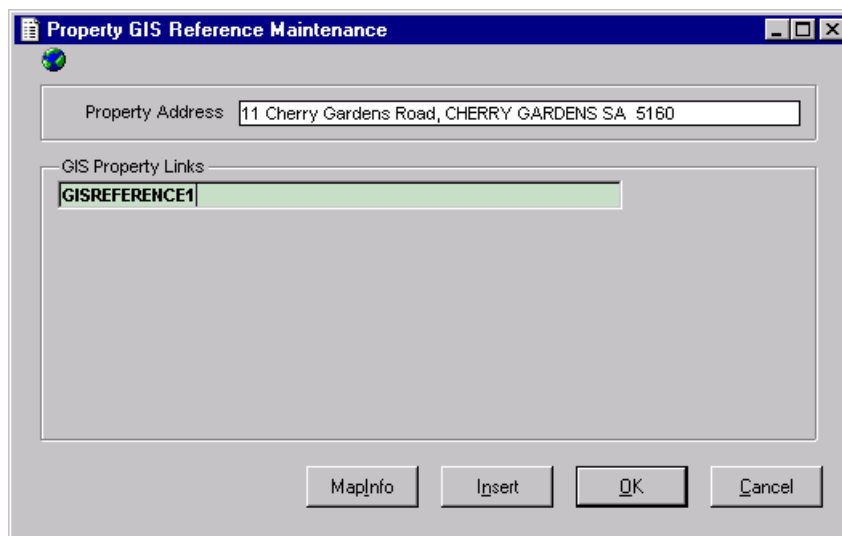
- *Property*
- *Title*
- *Parcel*
- *Street*

If the GIS Product is capable of handling multiple layers, links between Pathway and the GIS Product can be created and maintained for all the possible levels or some of them.

The links between Pathway and the map layer within the GIS Product are maintained within Pathway as GIS References. There are four separate database tables within the Pathway database, one for each level, that hold the GIS References. These GIS References must correspond to a unique identifier held in the GIS Product against a polygon in the appropriate map layer.

Pathway allocates internal numbers to Properties, Titles, Parcels and Streets. It is possible to use these internal numbers as GIS References. Some GIS Products however, require GIS References to be in a very specific format. Individual GIS References can be anything that will fit into the 50-character field provided in Pathway to store GIS References. Pathway allows multiple GIS References to be stored against a single item at one of the four available levels if required. The GIS Product must hold matching GIS Reference values against the individual polygons in the map to enable the link between the map and Pathway.

Within the Property Administration application, a GIS Reference menu option is available from Property Maintenance, Title Maintenance, Parcel Maintenance and Street Maintenance. This option will bring up a form that looks like the following example for the Property level, which allows maintenance of GIS References:



The interface to some GIS Products allows for the automatic population of these GIS References from the map. This

functionality is discussed later in this document. The maintenance of GIS References in Pathway and the GIS Product is an ongoing process as changes are made. For example, subdivisions will require modifications to the map as well as Pathway to accurately represent the new situation.

There are also parameter settings that must be set for the individual GIS Product within Pathway. These settings are all the details that Pathway requires to be able to communicate with the GIS Product as well as details on which layers are available in the map. The following parameter setting example is for a MapInfo map that has Title, Parcel and Street layers available:

GIS Product Maintenance

GIS Code: MAPINF
GIS Name: Map%Info
Description: MapInfo Version 5.0
Active: ☒
Path for Executable: P:\MAPINFO5\mapinfow.exe
Path for GIS Database: G:\GIS\MapInfo\Pathway.wor
Path for Interface: .gis
DDE System: MAPINFO
DDE Topic: PATHWAY.MBX
Parameters: Button_Top=0.44,Button_Left=6.49,Message_Top=4.61458,Message_Left=5.55208,Message_Width=2.69792,Message_Height=0.90625,Report=F

	GIS Layer	GIS Reference Field
Property		
Title	TITLEC	LIC_Tag
Parcel	PARCELC	LIC_Tag
Property Street	ROADS	LIC_Tag

More OK Cancel

When layers within the GIS are not specified, Pathway translates to the nearest available layer for Property, Title and Parcel layers. No translation is possible between the Street layer and the other three layers. This means that for the example parameter setup shown above, the Display on GIS action from the Property Summary form will use the Title layer to perform the Display on the map.

Functional Overview

Once the links are established between Pathway and the GIS Product, the two-way interface can function correctly. There are two sets of commands that are available to the user for a Pathway GIS interface. One is for accessing the map from Pathway and the other is accessing Pathway from the map. Both sets of commands are described in following sections.

Access to GIS processing is controlled by GIS User security within Pathway, which is set for each user by application. A given user can be given the default Enquiry access to each application or may be given Maintenance access to a given application. The user may also be denied access to a given application as required.

Pathway GIS User Security

An individual user can be given access to GIS processing for all applications in Pathway, some of the applications, or none of the applications depending on requirements. Each user can be given Maintenance or Enquiry access to a given application or denied access to a given application.

GIS User Security is specified on the GIS User Maintenance form. When the GIS Access flag is switched on for a given user, a detail button appears which will open the GIS User Application Maintenance form when it is clicked which allows access to be changed for the user for each application. If you do not click on the detail button the user receives Enquiry access to all Applications by default when GIS Access is on.

GIS Product parameter, allows individual Users to use a different GIS product. For example, the advanced users may need to access MapInfo, whereas other staff may be using EasiMaps. 'Default' is the Product that has been defined in the Property Parameters.

The Access Level is used to determine which mode the appropriate form for the given application gets started in if it is not already open. If a user has access to both Maintenance and Enquiry functions for a given application, the mode they are currently in within Pathway is not changed by what is set in the GIS User Security. The Enquiry or Maintenance mode set in the GIS User Security only determines what happens if the form must be started by Pathway because it is not already open. If the Access Level is set to None, GIS processing is not available to the user for the application.

GIS to Pathway

The functions a user can perform within a given GIS Product may vary depending on the implementation of the interface within the individual GIS product. All the possible functions that Pathway can perform when requested by a GIS Product, with an explanation of what each one does, are in the sections that follow. It is important that all selections that are passed to Pathway from the map for any of the following functions are all from the same layer.

Display in Pathway

Note: Top icon is in use in ArcView and MapObjects GIS products and the lower icon is in use in MapInfo, EasiMaps GIS products.



This function will display the Property or Street that matches the selection made on the map.

When a Property, Title or Parcel selection is made on the map, if Property Maintenance or Enquiry is open within Pathway, it will be used in the context it is open. If the Property Search form is open within any other module for selection of Properties, it will be used to select Properties into that module. If the Property Search form is not open, Pathway will start Property Maintenance or Enquiry depending on the GIS User security and display the linked Property. If multiple Properties match, a Property Selection form will display the matching Properties for selection or maintenance/enquiry.

When a Street selection is made on the map, if Street Maintenance is open within Pathway, it will be used, if it is not open it will be started and the Street displayed. If multiple Streets match, the Street selection form will display the matching Streets.

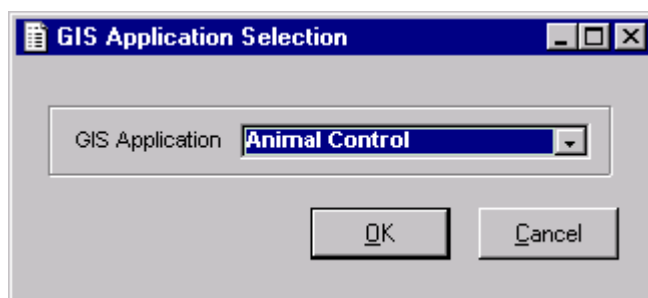
Display Other Module in Pathway

Note: Top icon is in use in ArcView and MapObjects GIS products and the lower icon is in use in MapInfo, EasiMaps products.



This function will display item(s) in any Pathway module that is capable of GIS that matches the selection made on the map.

When this function is performed, Pathway will display a list of modules to choose from in the following form (Animals for example):



Once the module is selected and the OK button is clicked, Pathway will present a Filtering form allowing further refinement of the selection by criteria available within each module. Each module's available filtering criteria is different. After selecting the required filtering criteria, Pathway will display the item in the module's Maintenance or Enquiry function. If the function is already open, it will be used in the context it is currently in, otherwise the relevant form will be opened using the mode specified in the GIS User Security. If only a single item matches, it will be displayed and if multiple items match, a selection form will display the matching items.

The Property Module is available from this list of applications if you make a selection from the Property, Title or Parcel layer to enable further refinement of the selection. This further refinement for Property is only available through this function and not through the Display in Pathway function.

All selections made on the GIS Application Selection form and the Filtering forms for each module are stored against the current Pathway user and are retrieved automatically next time the forms are invoked. This means the user's last selection defaults into these forms when that same user invokes the forms again.

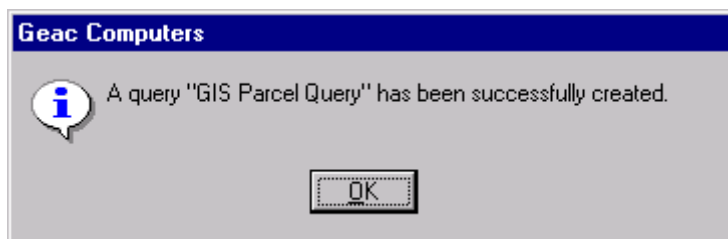
Create Pathway Query

Note: Top icon is in use in ArcView and MapObjects GIS products and the lower icon is in use in MapInfo, EasiMaps GIS products.



This function will create a Pathway Query for the layer that the selection is made on the map (Property, Title or Parcel). Once the Pathway Query is created it can be used within Pathway for Property Bulk Maintenance and other functions that can process records using a Pathway query as input. Note that with this function, no translation is possible from the selected layer to another layer.

The GIS Product will prompt the user for a description for the Query so that it can be identified at a later stage. When the creation of the Query has completed, Pathway will display a message to indicate that the Query has been created successfully, for example:



Create Other Module Pathway Query

Note: Top icon is in use in ArcView and MapObjects GIS products and the lower icon is in use in MapInfo, EasiMaps products.

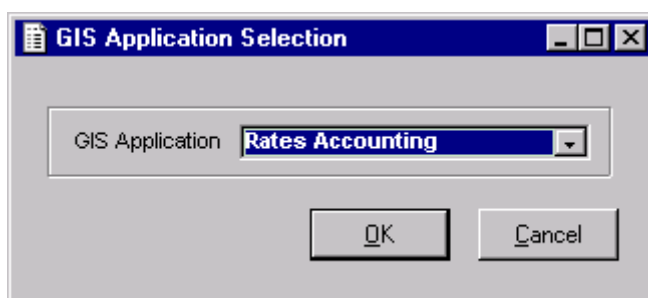


This function will create a Pathway query for any Pathway module that is capable of GIS that matches the selection made on the map.

Once the Pathway Query is created it can be used within Pathway for Bulk Maintenance within Property or Rates for example and other functions that can process records using a Pathway query as input such as relevant report options within all modules capable of GIS. With this function, it is possible to translate between the Property, Title and Parcel layers to create a resulting query at the required layer.

The GIS Product will prompt the user for a description for the Query so that it can be identified at a later stage. Pathway will then display a list of modules to choose from in the following form:

Once the module is selected and the OK button is clicked, Pathway will present a Filtering form allowing further refinement of the selection by criteria available within each module. Each module's available filtering criteria is different. After selecting the required filtering criteria, Pathway will create a query for the relevant entity within the module (for example LANANML for Animals).

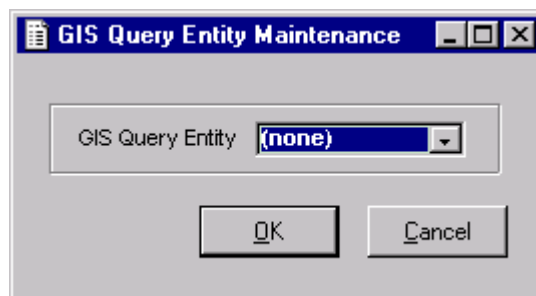


All selections made on the GIS Application Selection form and the Filtering forms for each module are stored against the current Pathway user and are retrieved automatically next time the forms are invoked. This means the user's last selection defaults into these forms when that same user invokes the forms again. Note that these forms are the same ones used for the Display Other Module in Pathway function so each will retrieve the other's defaults for the current user.

When the creation of the Query has completed, Pathway will display a message to indicate that the Query has been created successfully, for example:



The Property Module is available from the list of applications if you make a selection from the Property, Title or Parcel layer to enable further refinement of the selection. This further refinement for Property is only available through this function and not through the Create Pathway Query function. When Property is selected, a further form is presented to enable you to specify if you want to translate to another entity:



The available entities are Property, Title and Parcel and translation is available from any of the Property, Title or Parcel layers on the map. No translation is possible if a Street selection is made on the map.

Return to Pathway

Note: Top icon is in use in ArcView and MapObjects GIS products and the lower icon is in use in MapInfo, EasiMaps GIS products.



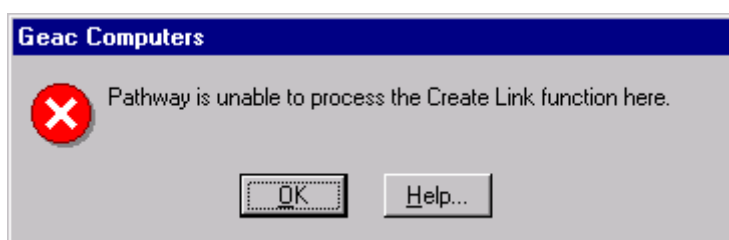
This function will simply activate Pathway, making it the front window. There is no requirement to make a selection on the map to be able to perform this function.



Create Link in Pathway

This function will create or update GIS References on the appropriate GIS Reference Maintenance form in Pathway to match the selection made on the map.

If the correct GIS Reference Maintenance form is not open in Pathway when the Create Link function is requested from the map, Pathway will present the following message and provides help to let the user know



what to do.

The selection on the map in a particular layer means that the GIS Reference Maintenance form for that layer is the only one that can process the Create Link request.

For example, the Property GIS Reference Maintenance form shown below will respond to a Create Link request for a selection made in the Property layer of the map.

The screenshot shows a Windows-style dialog box titled "Property GIS Reference Maintenance". It has a standard title bar with minimize, maximize, and close buttons. Inside the dialog, there is a "Property Address" label followed by a text input field containing the address "1 ALEXANDRA AVENUE, EASTWOOD SA 5063". Below this is a section labeled "GIS Property Links" which contains an empty list box. At the bottom of the dialog, there are four buttons: "MapInfo", "Insert", "OK", and "Cancel".

If there are no GIS References already in the form, Pathway will place the GIS Reference(s) sent from the map into the form as the GIS Reference Link. If there are any GIS References already in the form, Pathway will give a warning message before replacing any existing GIS References with the one(s) sent from the map.

Pathway to GIS

All the possible functions that a GIS Product can perform when requested by Pathway, with an explanation of what each one does, are in the sections that follow. The general form of the GIS functions available within Pathway is on the Search Profile, Selection and Summary forms of each module capable of GIS processing. Some modules have additional areas that are capable of GIS processing. The Pathway modules that are capable of GIS processing are:

- Property
- Applications
- Licensing
- Rates/Water Billing
- Animals
- Infringements (Property/Street related only)
- Customer Service (those linked to Property or Street only)

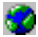
Activate GIS Product

This function will simply activate the GIS Product, which results in the GIS Product becoming the front window without taking any other action. This means any existing selection in the map remains selected. If the GIS Product is not active when this function is activated, Pathway will ask the user if they want to start the GIS Product.


This function is available from a button on the main Search Profile forms of any of the modules that are capable of GIS processing. The button is labelled with the name of the GIS Product.

NOTE: for any GIS interface that communicates with Pathway via the database, this button does not activate the map, it will perform the Check GIS function.

Display on GIS Product

This function will display the selected item(s) on the map. It can be activated from within Pathway from a button on the module's selection form. It can also be activated from the module's Summary form by double clicking the picture of the world  at the top left of the form (or by using a menu option on the same form).

If the selection form is capable of multiple selection, multiple items can be selected for display. When the button is activated, the current selection is sent to the GIS Product to be displayed. If the GIS Product is not active when this function is activated, Pathway will ask the user if they want to start the GIS Product before performing the display.

The Summary form will have a picture of the world  which, when double clicked, will display the current item on the GIS Product. Once again if the GIS Product is not active, Pathway will ask the user if they want to start the GIS Product before performing the display. Any form that displays the picture of the world, can display the currently displayed item on the GIS Product. On any of these forms, a menu command is available from the Associated menu called Display on GIS, which will perform the same action as double clicking on the picture of the world. This menu option is provided so the command can be activated using the keyboard.

Display Query on MapInfo

Search Profile

Entity

Query Result

Description

Display Pathway Query on GIS Product

This function will display the results of a Pathway query for all the main entities of the modules capable of GIS processing. The form looks like:

The user is required to select an entity from the available list (use the entity popup button to see the list). The user must then select a Pathway query result for that entity. Clicking on the Display button will display the result of the Pathway query on the GIS Product. If the GIS Product is not running, Pathway will ask the user if they want to start the GIS Product, before displaying the results of the Pathway Query.

The query result that the user selects for a specified entity may have been generated from within Pathway or from a selection on the map using one of the available Create Pathway Query functions.

Note: The menu option for this 'Display Query on GIS' is within the Query menu structure. Relevant staff should have access to this menu option.

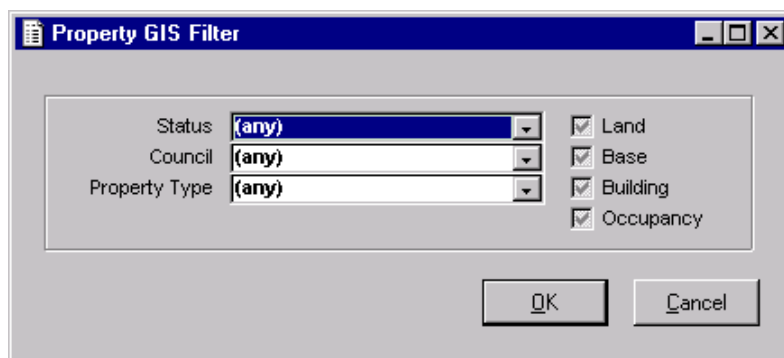
Application Specific Overview

The previous section described the GIS functionality within an interfaced GIS Product and within Pathway as an overall picture. This section is concerned with the functionality that is possible within each of the modules capable of GIS processing. Some modules have GIS processing in additional areas over what has been described in the previous section. This section shows the filtering available during GIS processing also gives some examples of how GIS processing can be used within each module.

Property Administration

Property GIS Filtering

The following form will appear when selecting the Property Administration module after performing a Display Other Module or Create Other Module Query command in the GIS Product:



Using this it is possible to further refine the items that have been selected on the map by Property Status, Council and Property Type. If the module is using Indicators, filtering may also be performed based on the Land, Base, Building and Occupancy indicators.

Examples

The following examples for the Property Module are only some of the things that can be achieved using the interface between Pathway and a GIS Product.

Display only Current Properties from a selection of Properties on the map



This involves making a selection in the GIS Product from the Property layer and activating the Display Other Module command. Pathway will respond by prompting for the module. Selecting the Property Administration Module and then clicking on OK will present the Property GIS Filter. Selecting the Property Status of "Current" and click on OK will result in only those Properties that are Current, matching the selection made on the map, being displayed.

This function can be useful when GIS References are re-used on new properties when an existing property is made historic during a sub-division.

Generation of Notices/Letters from a selection of Properties or Parcels on the map



This involves making a selection in the GIS Product from the Property or Parcel layer and performing the Create Other Module Query command. A description must be given to enable the Pathway Query to be identified later. Selecting the Property Administration module and specifying Filter criteria of at least 'Current' will then produce an additional selection of entity for which to create the Pathway Query. Selecting Property will create a Property Query that can then be used in the Miscellaneous Notices menu option to generate the required letters.

Alternative option for generating Notices/Letters from a selection on the map



This process can be used as opposed to creating a Query.

Using the Miscellaneous Notices menu option, select the INSERT button.

This will take the operator to the Property Search form.

Select the Map Button (with no property search criteria entered) and this will take the operator to the Map.

Highlight the required map selection and select the Other Module option.

Select Property and enter in relevant filter criteria and OK.

This will return the operator to the Property Select Form (as accessed within Miscellaneous Notices). The operator highlights the Property and takes SELECT. All of the highlighted properties are inserted into Miscellaneous Notices form.

The system is assuming that because the operator is in Miscellaneous Notices, this is where the result from the GIS selection is to be passed.

Bulk Update of Zone at Parcel level from a selection of Properties on the map



This involves making a selection in the GIS Product from the Property layer and performing the Create Other Module Query command. A description must be given to enable the Pathway Query to be identified later. Selecting the Property Administration module and specifying some Filter criteria if required will then produce an additional selection of entity for which to create the Pathway Query. Selecting Parcel will create a Parcel Query that can then be used in the Bulk Parcel Zone Update function within Pathway.

Bulk Update of Title Conditions from a selection of Parcels on the map



This example uses the same concept as the previous example. It involves making a selection in the GIS Product from the Parcel layer and performing the Create Other Module Query command. A description must be given to enable the Pathway Query to be identified later. Selecting the Property Administration module and specifying some Filter criteria if required will then produce an additional selection of entity for which to create the Pathway Query. Selecting Title will create a Title Query that can then be used in the Bulk Title Conditions Update function within Pathway.

Produce the Property Report from a selection of Parcels on the map



To produce the Property report for a query within Pathway, the Query must be a Property Query. If the GIS Product only has the Parcel layer available, a Property Query can be created from a selection made in the Parcel layer of the map.

Make a selection in the GIS Product from the Parcel layer and perform the Create Other Module Query command. A description must be given to enable the Pathway Query to be identified later. Selecting the Property Administration module and specifying some Filter criteria if required will then produce an additional selection of entity for which to create the Pathway Query. Selecting Property will create a Property Query that can then be used in the Property Report to identify which Properties to report on.

Create a Pathway Query to identify Properties with a Land Use of "Recreation Reserve" and display the result on the map

Within Pathway, create a Pathway query to identify all properties with a Land Use of "Recreation Reserve". The Display Query on GIS menu option can then be used to display the Property Query on the map. This would require the Property entity to be selected and then the relevant Property Query to be selected for display. Then by simply clicking on the Display button, the query is displayed on the map.

The Pathway query can be created with any criteria that the Pathway Query engine is capable of processing.

If the Pathway query is created for Properties and the map only has Parcel layer available, the Display Query on GIS function will translate the Property query to the Parcel layer during the display.

Workflow System Action

A Workflow System Action called GIS Display is available within the Applications and Customer Service modules only. This Action will display the item that the task relates to on the map. If the GIS Product is not already running when this action is performed, the user is given the option of starting the GIS Product before the item is displayed.

Future Releases of Pathway will incorporate this System Action into other Pathway modules capable of both GIS processing and Workflow.

Examples

Create a User Action, using the System Action of GIS Display

Create a Task in Applications Workflow parameters that contains the above Action

Add the Task to the relevant Procedure

This Action could be required, to ensure that the staff member reviews the Map to determine whether other non-Pathway attributes held on the Map are relevant to the Application being processed.

Applications

Applications GIS Filtering

The following form will appear when selecting the Application module after performing a Display Other Module or Create Other Module Query command in the GIS Product:

The Class will default from any previous selection or from the last Class that the operator accessed within Pathway.

It will only allow selection of Classes that the operator is authorised to.

Examples

Display only 'approved' applications lodged within a certain timeframe or Year from a selection on the map



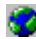
This involves making a selection in the GIS Product and activating the Display Other Module command. Pathway will respond by prompting for the module. Selecting the Application Module and then clicking on OK will present the Application GIS Filter. Entering the Class and Lodgement Date range or Year and Status code then clicking on OK will result in only those Applications matching the filter criteria and matching the selection made on the map, being displayed.

Any other combinations of filter criteria can be used.

Select 'affected properties' for a given Application from the map and add to the Pathway Application



This process would require the operator to access the Application and 'Affected Properties' option.

Highlight the Property (linked to the Application) and double click the World icon  This will take the operator to the Map (prompting to start the GIS session if not already active). The operator then selects the required surrounding area and selects the 'original' Pathway option, as above. This option will function, when the operator is in the Affected Properties Form, and take the operator to the selection option to choose, Owner, Occupier etc. Upon selection of the required option, the chosen properties (from the map) are automatically loaded as 'affected properties'.

Creating a Pathway Applications Query to use over the Applications Register Report



This involves making a selection in the GIS Product and performing the Create Other Module Query command. A 'description' must be given to enable the Pathway Query to be identified later. Selecting the Application Module and then clicking on OK will present the Application GIS Filter. Entering the Class and other relevant filter criteria and then clicking on OK will create the Pathway Query. From the Applications Register Report, the newly created Query can then be selected.

Display on Map, the properties selected from any Applications Select, Summary or other Form



From an Applications Select Form, one or many Application records can be selected and the Map Button taken. The Properties or Parcels linked to the selected Application records will be displayed on the Map.

Form the Applications Summary Form, double clicking the World will display the linked Parcel or Property on the Map.

From the Locations option within Applications Maintenance or Enquiry, one of the Locations can be selected and a double click on the World icon will display this record on the Map.

From the Inspections Option, an Inspection can be selected and double click on the World icon will display the location/s linked to the Inspection on the Map.

From the Permits and Certificate Option, a Permit/Certificate record can be selected and double click on the World icon will display the location/s linked to the record on the Map.

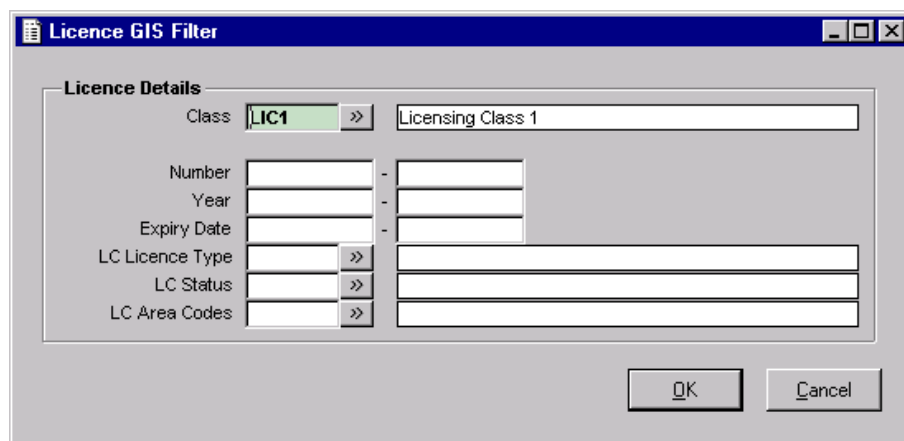
From a Pathway generated Application Query, display results on the Map

Using standard Pathway Query function, an Application Query with results can be selected, via the "Display Query on GIS" menu option within the Query menu structure. This option will then display the matching GIS record to all records in the Query on the Map.

Licensing

Licensing GIS Filtering

The following form will appear when selecting the Licensing module after performing a Display Other Module or Create Other Module Query command in the GIS Product:



The image shows a Windows-style dialog box titled "Licence GIS Filter". It contains a "Licence Details" section with several input fields and buttons. The "Class" field is set to "LIC1" and has a button to the right that says "Licensing Class 1". Below this are fields for "Number", "Year", and "Expiry Date", each followed by a hyphen and an empty field. There are also three rows of fields for "LC Licence Type", "LC Status", and "LC Area Codes", each with a button to the right. At the bottom right of the dialog are "OK" and "Cancel" buttons.

The Class will default from any previous selection or from the last Class that the operator accessed within Pathway.

It will only allow selection of Classes that the operator is authorised to.

Examples

Display Licences of a specific 'Type' (example Cooling Towers) to enable Tasks to be added for Inspections



This involves making a selection in the GIS Product and activating the Display Other Module command. Pathway will respond by prompting for the module. Selecting the Licensing Module and then clicking on OK will present the Licence GIS Filter. Entering the Class, Type and any other selection criteria then clicking on OK will result in only those Licences matching the filter criteria and matching the selection made on the map, being displayed.

Creating a Pathway Licence Query to use over the Licence Reports/Report Entities



This involves making a selection in the GIS Product and performing the Create Other Module Query command. A 'description' must be given to enable the Pathway Query to be identified later. Selecting the Licence Module and then clicking on OK will present the Licence GIS Filter. Entering the Class and other relevant filter criteria and then clicking on OK will create the Pathway Query. From the relevant Licence Report option, the newly created Query can then be selected.

Display on Map, the properties selected from any Licence Select, Summary or other Form



From a Licence Select Form, one or many Licence records can be selected and the Map Button taken. The polygons of the Properties linked to the selected Licence records will be displayed on the Map.

From the Licence Summary Form, double clicking the World icon will display the linked Map polygon.

From the Locations option within Licence Maintenance or Enquiry, one of the Locations can be selected and a double click on the World icon will display this record on the Map.

From the Inspections Option, an Inspection can be selected and double click on the World icon will display the location/s linked to the Inspection on the Map.

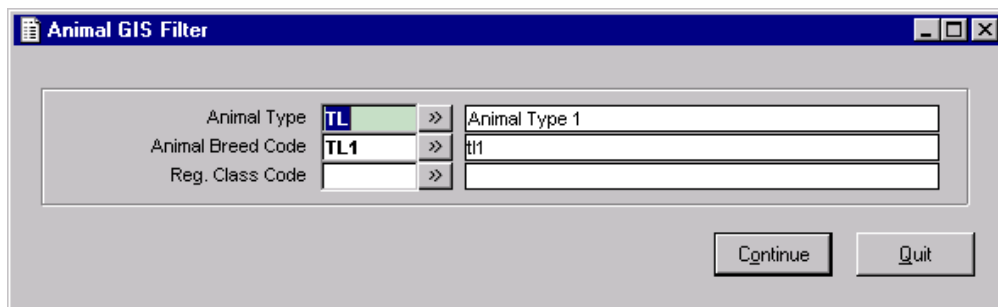
From a Pathway generated Licence Query, display results on the Map

Using standard Pathway Query function, a Licence Query with results can be selected, via the “Display Query on GIS” menu option within the Query menu structure. This option will then display the matching GIS record to all records in the Query on the Map.

Animal Control

Animals GIS Filtering

The following form will appear when selecting the Animal module after performing a Display Other Module or Create Other Module Query command in the GIS Product:



Examples

Display selection from Map in Animal Maintenance or Enquiry to locate owners of particular Breeds



Where the owners of a particular breed are to be identified within a geographical area, that area would be highlighted on Map. The Display Other Module would then be activated and the Animal Module selected. The Animal Type and Breed would be entered and OK taken. This would display the Animal records in Pathway matching on Map selection and Filter criteria.

Creating a Pathway Animal Query to use over the Animal Report



This involves making a selection in the GIS Product and performing the Create Other Module Query command. A 'description' must be given to enable the Pathway Query to be identified later. Selecting the Animal Module and then clicking on OK will present the Animal GIS Filter. Entering the relevant filter criteria and then clicking on OK will create the Pathway Query. From the Animal Report option, the newly created Query can then be selected.

Display on Map, the properties selected from any Animal Select or Summary Form



From the Animal Select Form, select one or many Animal records and take the Map Button to display the properties linked to the Animal records on the Map.

Form the Animal Maintenance Form, double clicking on the World icon will take the operator to the Map displaying the polygon of the property linked to the Animal record.

From a Pathway generated Application Query, display results on the Map

Using standard Pathway Query function, an Animal Query selecting (unregistered Animals as an example) can be generated and then using the "Display Query on GIS" menu option within the Query menu structure, display all records on the Map. This could then allow a planned doorknock to check existence of animals and perhaps raise Infringement tickets.

Infringements

Infringements GIS Filtering

The following form will appear when selecting the Infringement module after performing a Display Other Module or Create Other Module Query command in the GIS Product:



The Type will default from any previous selection or from the last Type that the operator accessed within Pathway.

It will only allow selection of Types that the operator is authorised to.

The following is an overview of what can be achieved between the Pathway Infringement module and GIS:

From Map

- Access one or many Infringements in Pathway from the GIS. Note: only those records linked to either a Property or a Street are available for use in this interface. Street linked records can only be used where a Street Layer has been defined within the Map and the Pathway GIS Parameters.
- Create a Pathway Infringement Query from GIS polygon selection and using Filters to further define criteria. Query can then be used to produce standard Pathway Infringement Reports and/or Notices.

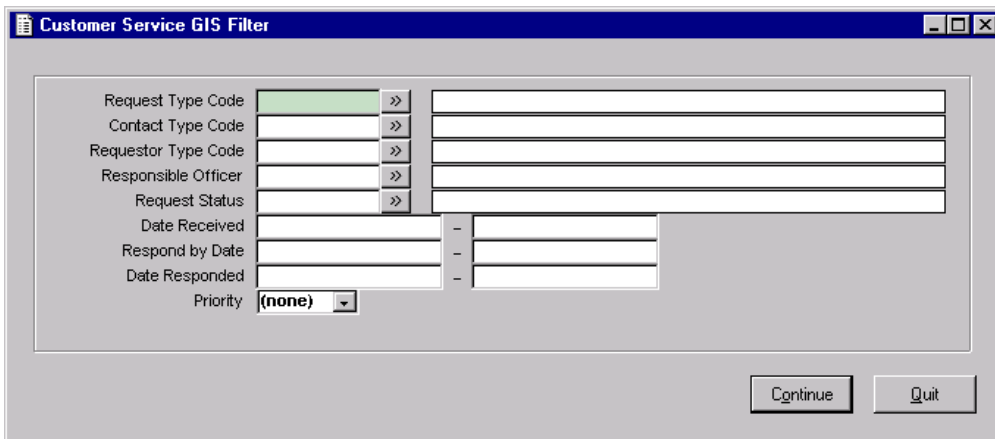
From Pathway

- From the Infringement Summary Form or Select Forms in Pathway display selected polygons on Map
- Create a Pathway Infringement Query and using the “Display Query on GIS” menu option within Query menu structure, display results on the Map.

Customer Service

Customer Service GIS Filtering

The following form will appear when selecting the Customer Service module after performing a Display Other Module or Create Other Module Query command in the GIS Product



The following is an overview of what can be achieved between the Pathway Customer Service module and GIS:

From Map

- Access one or many Customer Service records in Pathway from the GIS. Note: only those records linked to either a Property or a Street are available for use in this interface. Street linked records can only be used where a Street Layer has been defined within the Map and the Pathway GIS Parameters.
- Create a Pathway Customer Service Query from GIS polygon selection and using Filters to further define criteria. Query can then be used to produce standard Pathway Customer Service Reports.

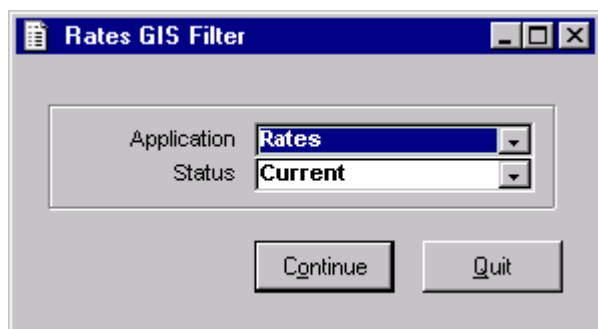
From Pathway

- From the Customer Service Summary Form or Select Forms in Pathway display selected polygons on Map
- Create a Pathway Customer Service Query and using the “Display Query on GIS” menu option within Query menu structure, display results on the Map.

Rates Accounting / Water Billing

Rates GIS Filtering

The following form will appear when selecting the Rates after performing a Display Other Module or Create Other Module Query command in the GIS Product:



Examples

Display current assessments from a selection on the map



This involves making a selection in the GIS Product and activating the Display Other Module command. Pathway will respond by prompting for the module. Selecting the Rates Module and then clicking on OK will present the Rates GIS Filter. Entering the Application (Rates, Water Billing or Special Rates and Charges) and Status then clicking on OK will result in only those Assessments matching the filter criteria and matching the selection made on the map, being displayed.

Creating a Pathway Rates Query to use in Bulk Maintenance to add a new Rate Type



This involves making a selection in the GIS Product and performing the Create Other Module Query command. A 'description' must be given to enable the Pathway Query to be identified later. Selecting the Rates Module and then clicking on OK will present the Rates GIS Filter. Entering the Application and Status (should always be Current in this situation) and then clicking on OK will create the Pathway Query. From the Rates Bulk Maintenance option, use this Query and apply the new Rate Type as per standard processing.

This process could be used for any other bulk maintenance, where the location of the assessment is relevant to the maintenance being performed.

Display on Map, the properties selected from any Rates Select or Summary



From a Rates Select Form, one or many Assessment records can be selected and the Map Button taken. The Properties linked to the selected Assessment records will be displayed on the Map.

Form the Rates Summary Form, double clicking the World will display the linked Property on the Map.

From a Pathway generated Rates Query, display results on the Map

Using standard Pathway Query function, a Rates Query with results can be selected, via the “Display Query on GIS” menu option within the Query menu structure. This option will then display the matching GIS record to all records in the Query on the Map.

Other Functionality

It is possible, using the GIS and Query functions, to use one Pathway module Query to generate a Query in another Pathway module.

Example 1



Create a Query over Property using Zone or Land Use. This can be used to display the relevant polygons on the Map.

Once records are highlighted in the Map, choose the Other Applications Query icon, enter Description and select Rates.

This will then generate a Rates Query using the selected polygons on the Map.

This Query can then be used to perform Bulk Maintenance on the relevant Assessments.

Example 2



Alternatively, you may wish to send a letter to the Property Owners, of all Properties where an Assessment has a particular Rate Type.

Create a Rates Query, using the relevant Rate Type as the conditioning criteria.

Use the Query to display the relevant polygons on the Map.

Once records are highlighted in the Map, choose the Other Applications Query icon, enter Description and select Property and enter required filter criteria.

This will then generate a Property Query using the selected polygons on the Map.

This Query can then be used in Property Miscellaneous Notices to issue a Notice/letter to property owners.