



BarTender for Infor10 Warehouse Mobility

Configuration Guide

Copyright © 2012 Infor

All rights reserved. The word and design marks set forth herein are trademarks and/or registered trademarks of Infor and/or related affiliates and subsidiaries. All rights reserved. All other trademarks listed herein are the property of their respective owners.

Important Notices

The material contained in this publication (including any supplementary information) constitutes and contains confidential and proprietary information of Infor.

By gaining access to the attached, you acknowledge and agree that the material (including any modification, translation or adaptation of the material) and all copyright, trade secrets and all other right, title and interest therein, are the sole property of Infor and that you shall not gain right, title or interest in the material (including any modification, translation or adaptation of the material) by virtue of your review thereof other than the non-exclusive right to use the material solely in connection with and the furtherance of your license and use of software made available to your company from Infor pursuant to a separate agreement ("Purpose").

In addition, by accessing the enclosed material, you acknowledge and agree that you are required to maintain such material in strict confidence and that your use of such material is limited to the Purpose described above.

Although Infor has taken due care to ensure that the material included in this publication is accurate and complete, Infor cannot warrant that the information contained in this publication is complete, does not contain typographical or other errors, or will meet your specific requirements. As such, Infor does not assume and hereby disclaims all liability, consequential or otherwise, for any loss or damage to any person or entity which is caused by or relates to errors or omissions in this publication (including any supplementary information), whether such errors or omissions result from negligence, accident or any other cause.

Trademark Acknowledgements

All other company, product, trade or service names referenced may be registered trademarks or trademarks of their respective owners.

Publication Information

Release: BarTender for Infor10 Warehouse Mobility Version 3.x

Publication date: December 19, 2012

About this guide

BarTender is a software application used for designing and printing barcoded labels. This guide explains how to configure and use BarTender with Infor10 Warehouse Mobility. This guide should be used as a supplement to the documentation supplied by the BarTender application manufacturer.

About Infor10 Warehouse Mobility

Infor10 Warehouse Mobility is a comprehensive and robust data collection system that simplifies operations by streaming real-time information between the shop floor and your ERP system.

Infor10 Warehouse Mobility handles all communications with your ERP system. Users select transactions and scan bar-coded data by using hand-held radio frequency (RF) scanners. Infor10 Warehouse Mobility formats the data and transmits it to your ERP system. Any feedback from ERP is presented to the user exactly as it was received.

With Infor10 Warehouse Mobility, users work with data-entry screens that show only relevant data fields, many of which are pre-populated with default values. Infor10 Warehouse Mobility updates your ERP database with the same data integrity as transactions that you enter through the standard ERP user interface at a desktop terminal.

You can edit Infor10 Warehouse Mobility parameter data using a set of simple Web pages. The actual data is stored in XML files that correspond to the structure of your site.

Contacting Infor

If you have questions about Infor products, go to the Infor Xtreme Support portal at www.infor.com/inforxtreme.

If we update this document after the product release, we will post the new version on this Web site. We recommend that you check this Web site periodically for updated documentation.

If you have comments about Infor documentation, contact documentation@infor.com.

Configuring BarTender for Infor10 Warehouse Mobility

Introduction

An Infor10 Warehouse Mobility barcode label provides human-readable text and barcoded data on a durable label. The text provides descriptive information, while the barcode provides information in a format that can be read by a barcode scanner.

BarTender is a software package used for designing and printing barcode labels. BarTender includes a label-designing editor and integration utility called Commander.

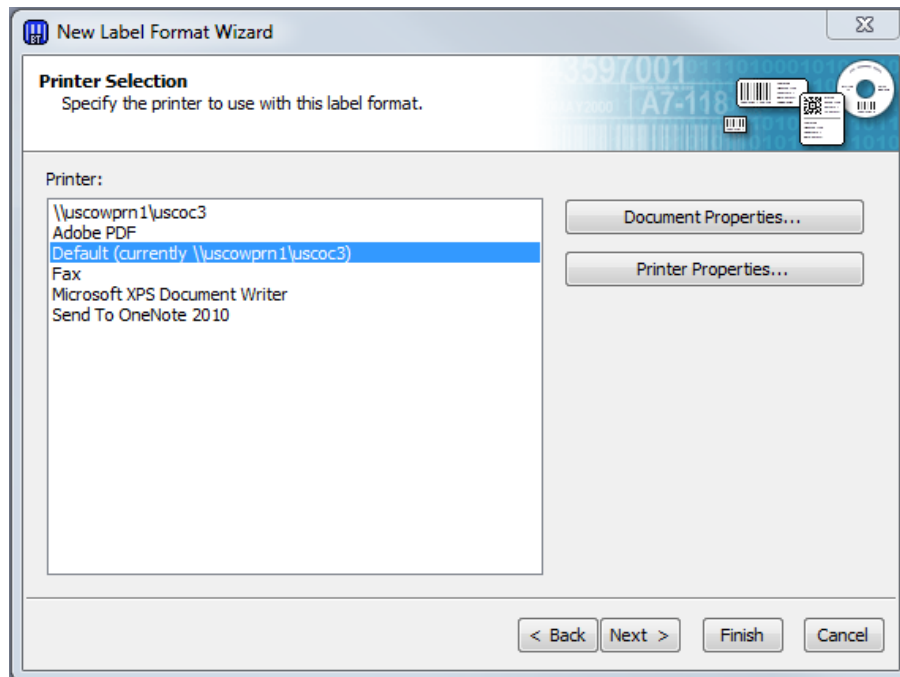
Creating a label format

A label format controls the layout of printed barcode labels. The label format organizes the label into a series of fields and specifies the size and position of each field. Each field is a placeholder for a piece of information (such as item number or order number). Use BarTender to design the format for your barcode labels.

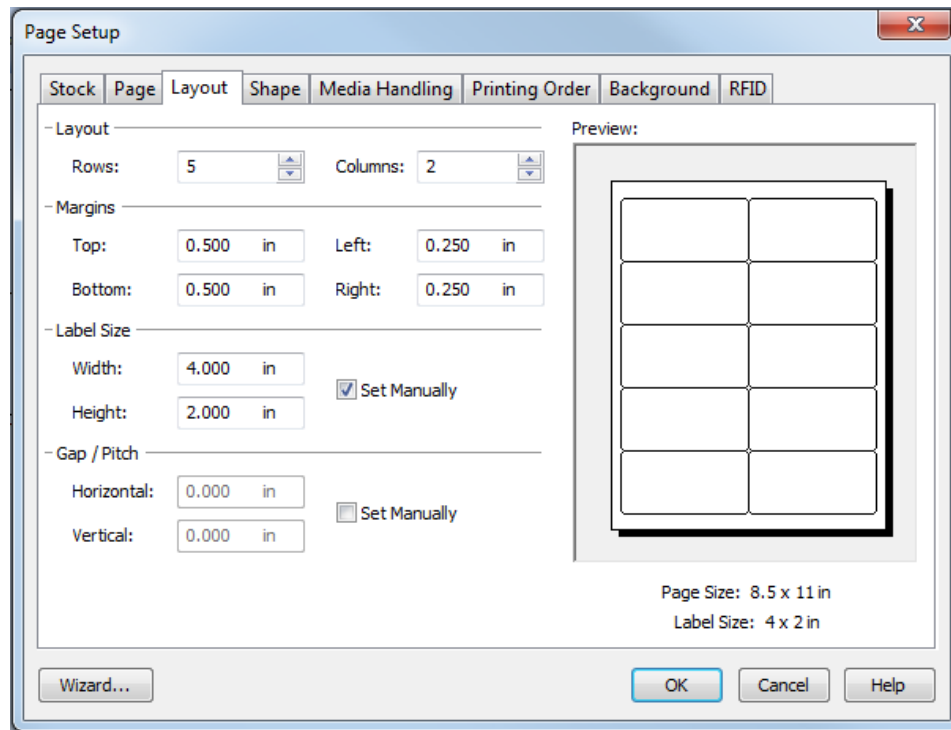
This section explains how to create a sample label format containing three data fields (Item, Unit of Measure, and Description) for use with from Infor10 Warehouse Mobility. See the BarTender Online Help for more information on creating labels.

To create a new label format:

1. Launch the BarTender application.
2. Select **File > New**. The New Label Format Wizard opens.
3. Select **Blank Label Format**, then click **Next**. The **Printer Selection** page opens.



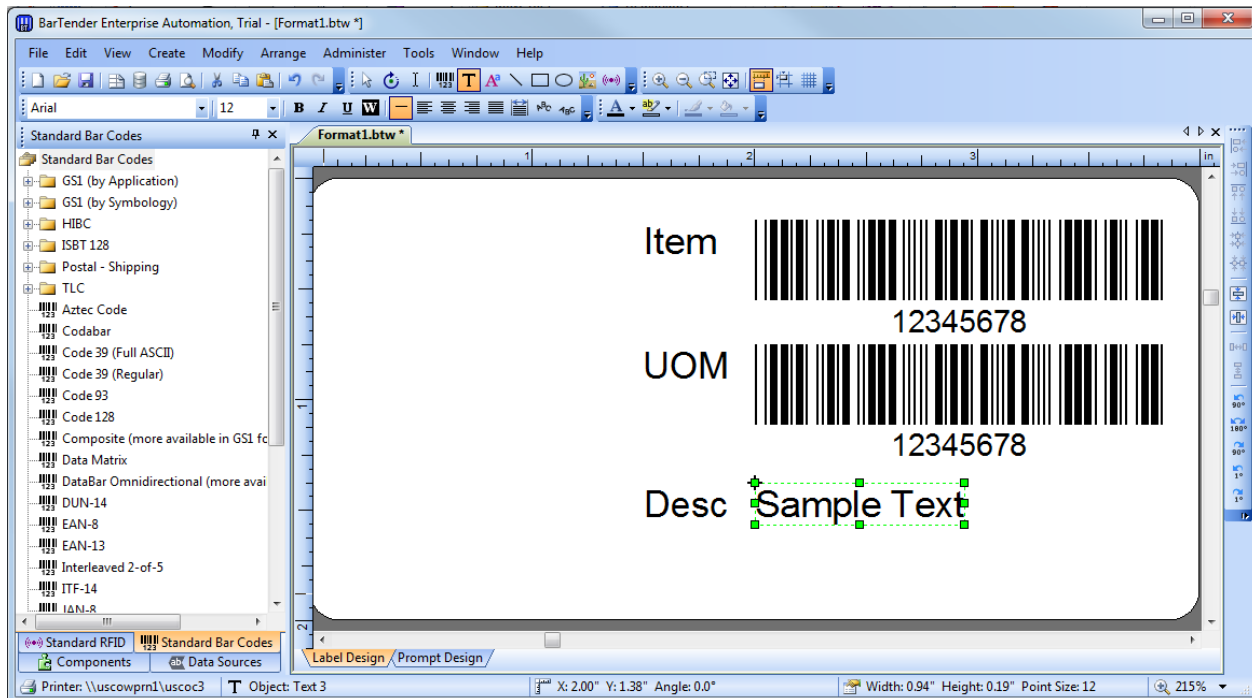
4. Select the network printer to print labels, then click **Finish**. The New Label Format Wizard closes.
5. In BarTender, Select **File > Page Setup**.
6. The **Page Setup** dialog opens. On the **Page** tab, select the page size from the **Page Size** list.
7. On the **Layout** tab, specify the label size in the **Width** and **Height** fields. Click **OK**.



8. The **Page Setup** dialog closes. In BarTender, create these label fields:

- Click the Bar Code toolbar button, then click in the design area to place a barcode.
- Click the Text toolbar button, then click in the design area to place a text label next to the barcode. Label this barcode "Item."
- Place a second barcode in the design area, then place a text label next to this barcode. Label this barcode "UOM."
- Place two more text labels in the design area. Label them "Desc" and "Sample Text."

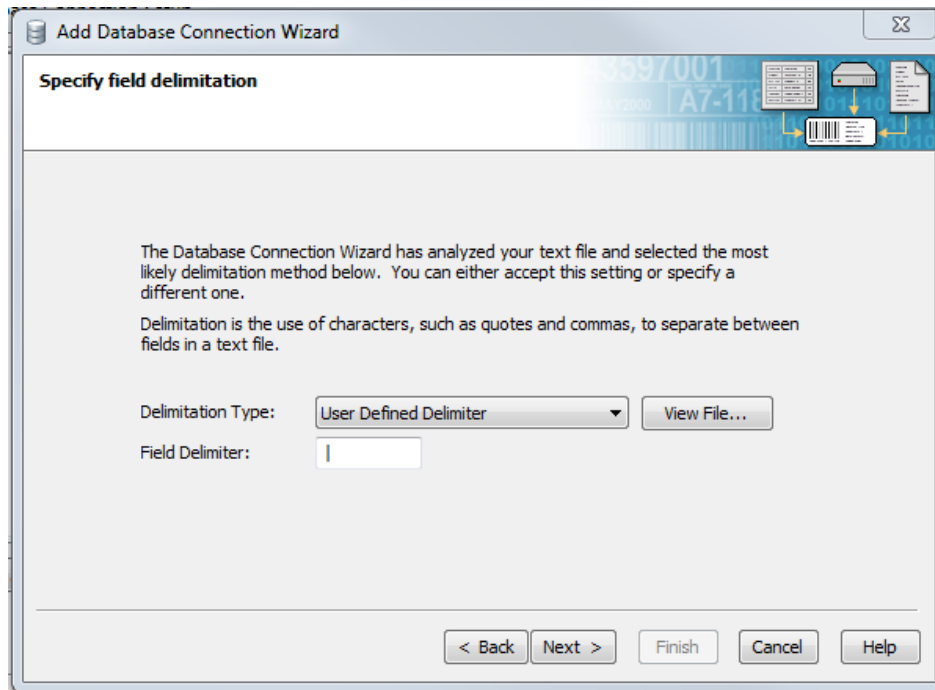
When finished, the design area should look similar to this.



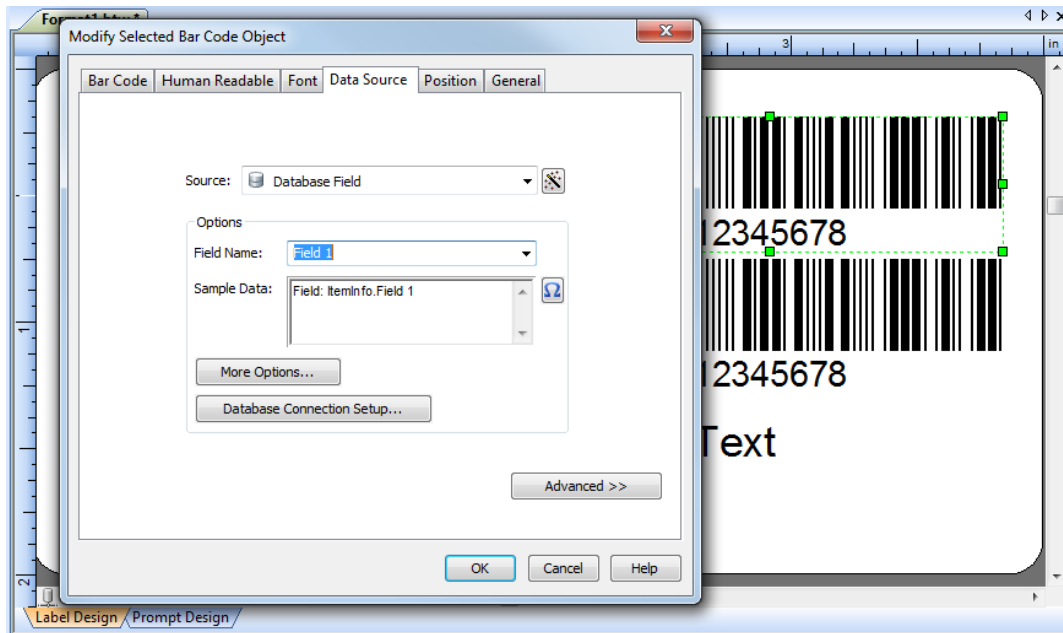
9. Using a text editor such as Notepad, create and save a file named `ItemInfo.txt` consisting of the following single line of data:


```
P1 | EA | Packaging Material
```

This text file serves as a database, specifying the order of values within the data file generated by Infor10 Warehouse Mobility.
10. Use the Database Connection Setup function to tie the text file from step 9 to the appropriate label format. Select **File > Database Connection Setup**.
11. The Database Connection Setup Wizard opens. Click **Next**.
12. The **Type** page opens. Select **Text File**, then click **Next**.
13. The **File** page opens. Click **Select File**, then browse to select the text file from step 9. Click **Next**.
14. The **Delimitation** page opens. From the **Delimitation Type** list, select **User Defined Delimiter**. In the **Field Delimiter** field, specify the vertical bar character (`|`), then click **Next**.



15. The **First Row Format** page opens. Select **No**, then click **Finish**.
16. The **Database Connection Setup** dialog opens. Click **OK**.
17. The **Database Connection Setup** dialog closes. In the BarTender design area, double-click the Item barcode object.
18. The **Modify Selected Bar Code Object** dialog opens. On the **Data Source** tab, select **Database Field** from the **Source** list. Select **Field 1** from the **Field Name** list. Click **OK**.



19. The **Modify Selected Bar Code Object** dialog closes. In the BarTender design area, double-click the UOM barcode object.
20. The **Modify Selected Bar Code Object** dialog opens. On the **Data Source** tab, select **Database Field** from the **Source** list. Select **Field 2** from the **Field Name** list. Click **OK**.
21. The **Modify Selected Bar Code Object** dialog closes. In the BarTender design area, double-click the Desc text object (labeled Sample Text).
22. The **Modify Selected Bar Code Object** dialog opens. On the **Data Source** tab, select **Database Field** from the **Source** list. Select **Field 3** from the **Field Name** list. Click **OK**.
23. The **Modify Selected Bar Code Object** dialog closes. Select **File > Save** to save the label format.

Using BarTender Commander

The BarTender Commander utility is used as a print daemon, sending print jobs to label printers. Infor10 Warehouse Mobility generates a file containing label-specific data, such as item number or order number. The data file also contains instructions to Commander, such as the name of the printer or quantity of labels to print. Commander processes the information in the file and prints the job according to instructions you specify in a task list.

To create a new task list:

1. Launch the BarTender Commander application. The **Commander** dialog opens.
2. Select **File > New**.

3. Select **Task > Add**.
4. In the **Task Options** dialog, configure these parameters as required:

Name

Specify a unique name for each task.

Trigger

Select **File** from the **Trigger** list for processing data files generated by Infor10 Warehouse Mobility.

5. On the **Trigger** tab, configure these parameters as required:

Detection Method

Can be set to **Polling** (for processing files at regular time intervals) or **Immediate** (for processing files as soon as they are generated). Specify **Immediate**.

Folder to Scan

Specify the directory in which Infor10 Warehouse Mobility stores label data files.

Files to Scan for

Specify the filename extension to scan for, such as `.dd`.

Detection Response

Specifies the action Commander takes after processing a data file. Specify **Rename File**, which allows the same files to be used to reprint labels if necessary.

New Extension

Specify the new filename extension to assign to data files after they are processed.

Task Options

Name: b2bar

Trigger: File

Trigger Command(s)

Detection Method: Immediate

Polling Interval: 1000 Milliseconds

Folder to Scan: C:\b2bar\barcodeout\ Browse...

Files to Scan for: *.dd

Detection Response: Rename File

New Extension: dat

Locked-File Timeout: 30 Seconds

File Encoding: Windows' System Default

OK Cancel Help

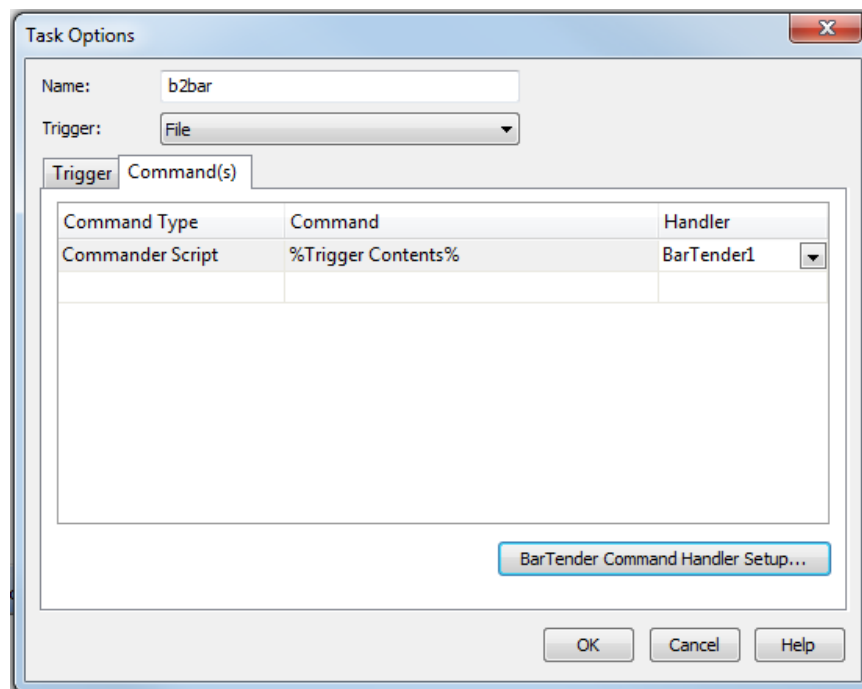
- On the **Command(s)** tab, configure these parameters as required:

Command Type

Specifies the type of data file BarTender is configured to use. Specify **Commander Script**.

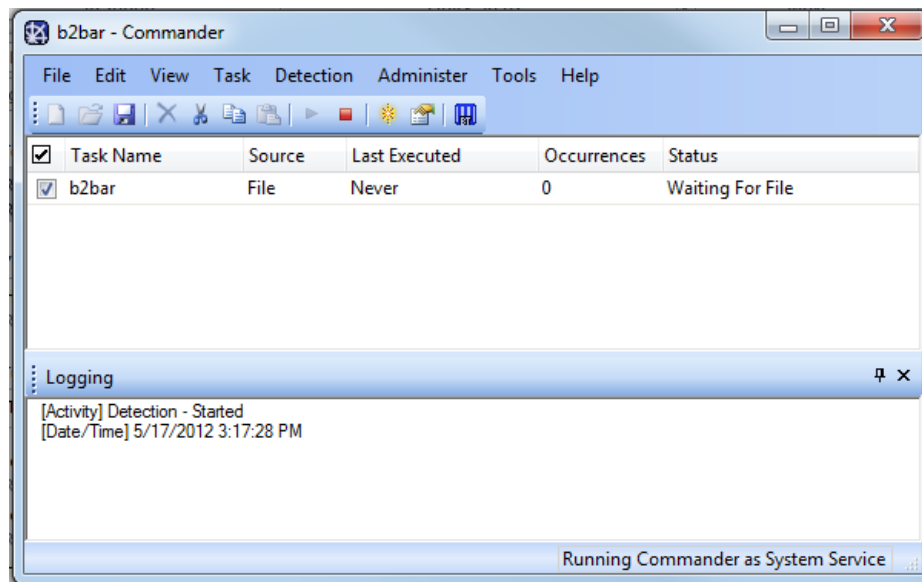
Command

Specify **%Trigger Contents%**.



- Click **OK**. The **Task Options** dialog closes.
- In the **Commander** dialog, select **File > Save** to save the task list.

Commander processes the instructions specified in the task list only after the task has been started. To start the task and process data files from Infor10 Warehouse Mobility, select **Detection > Start Detection**.

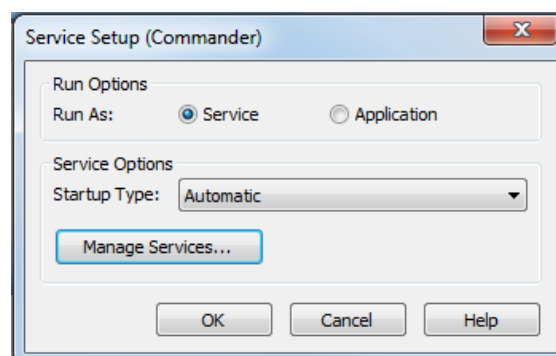


Running Commander as a Windows service

BarTender Commander can be run as a standalone application or as a Windows service. During development and testing, Commander should be run as a standalone application. However, this requires Commander to be manually restarted every time the system is rebooted. If you run Commander as a Windows service, Commander starts automatically when the system is rebooted.

To run Commander as a Windows service:

1. Launch the BarTender Commander application. The **Commander** dialog opens.
2. Select **Administer > Service Setup**. The **Service Setup** dialog opens.
3. Under **Run As**, select **Service**.
4. From the **Startup Type** list, select **Automatic**.



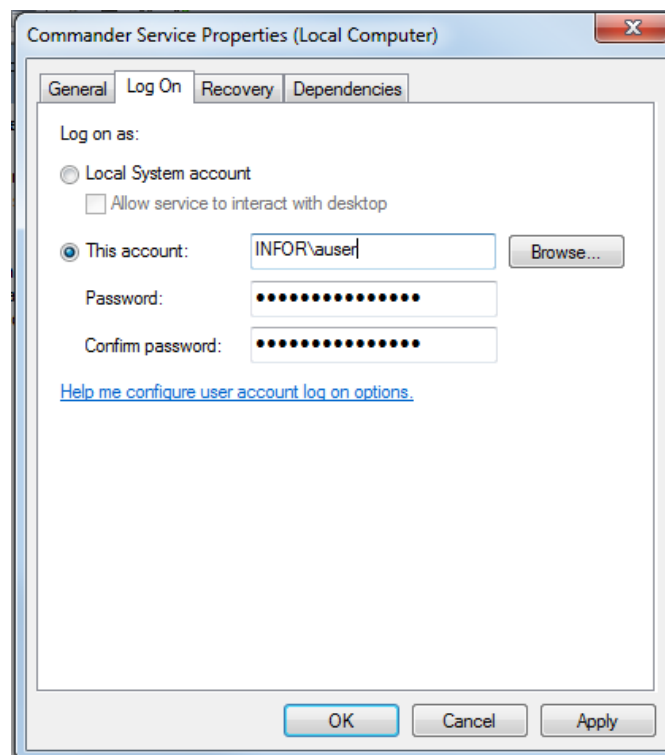
5. Click **OK**.

Selecting a user account

The Commander service must be started with a user account that has access to all network printers used for label printing. If the service is started with a user account that has insufficient printer access, BarTender will be unable to print labels.

To select a different user account:

1. Launch the BarTender Commander application. The **Commander** dialog opens.
2. Select **Administer > Service Setup**. The **Service Setup** dialog opens.
3. Click **Manage Services**. The **Services** dialog opens.
4. Double-click **Commander Service** from the **Services** list. The **Commander Service Properties** dialog opens.
5. Specify the appropriate account and password on the **Log On** tab.

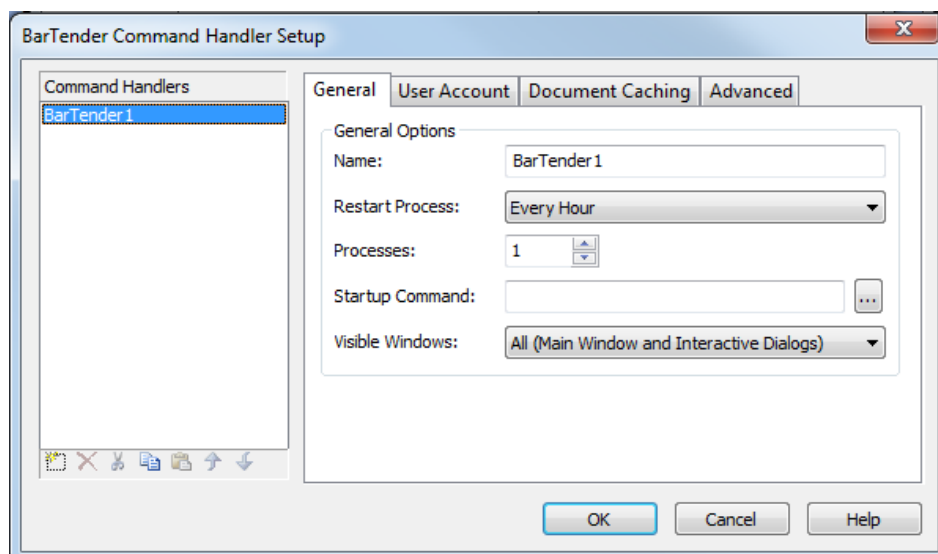


6. Click **OK**.

Troubleshooting Commander

When Commander is running as a Windows service, it can be difficult to troubleshoot label printing problems. To troubleshoot label printing problems, start Commander as a standalone application and configure it to show all labels and any associated error messages before printing. To configure Commander for troubleshooting:

1. Launch the BarTender Commander application. The **Commander** dialog opens.
2. Select **Administer > Service Setup**. The **Service Setup** dialog opens.
3. Under **Run As**, select **Application**.
4. Click **OK**. The **Service Setup** dialog closes.
5. In the **Commander** dialog, select **Task > Properties**. The **Task Options** dialog opens.
6. On the **Commands** tab, click **BarTender Command Handler Setup**. The **BarTender Command Handler Setup** dialog opens.
7. On the **General** tab, select **All (Main Window and Interactive Dialogs)** from the **Visible Windows** list.



8. Click **OK**. The **BarTender Command Handler Setup** dialog closes.
9. Click **OK**. The **Task Options** dialog closes.

When you start the task in Commander, a BarTender dialog opens, which displays the labels processed by Commander along with any error messages.

Configuring Infor10 Warehouse Mobility

Infor10 Warehouse Mobility uses BarTender Commander to print barcode labels. For each label-printing transaction, an .xml file is used to configure the barcode label.

Note: All printers used for printing barcode labels should be configured in the Infor10 Warehouse Mobility Administration Tool. See the Infor10 Warehouse Mobility Administration Guide for instructions.

Configuring a Label-Printing Transaction

This code shows the contents of the .xml file used to configure the Infor10 Warehouse Mobility transaction for printing the labels in section “Creating a label format.”

```
<?xml version='1.0'?>
<transaction id='Standard'>
<label id='item_label'>
<header id='header1'>
%BTW% /AF=&quot;C:\b2bar\production\barcode_labels\item_label.btw&quot;;
  /PRN=&quot;<header_field id='printer'>&quot;; /PD /D=&quot;&lt;Trigger
  File Name&gt;&quot;; /C=<header_field id='noOfLabels'> /R=3
</header>
<field_seperator>|</field_seperator>
  <field_list>
    <field id="item"></field>
    <field id="stgu"></field>
    <field id="dsca"></field>
  </field_list>
</label>
</transaction>
```

Edit these sections to configure different transactions:

Format File

Change the format file name (specified in boldface below) to the label format file name used by the transaction:

```
%BTW% /AF=&quot;C:\b2bar\production\barcode_labels\item_label.btw&quot;;
  /PRN=&quot;<header_field id='printer'>&quot;; /PD /D=&quot;&lt;Trigger
  File Name&gt;&quot;; /C=<header_field id='noOfLabels'> /R=3
```

Field Separator

Change the field separator character (specified in boldface below) according to the label format used by the transaction:

```
<field_seperator>|</field_seperator>
```

Field List

Change the list of fields (specified in boldface below) according to the label fields on the label format file used by the transaction:


```
<field_list>  
  <field id="item"></field>  
  <field id="stgu"></field>  
  <field id="dsca"></field>  
</field_list>
```

Adding a Printer

To add a printer:

1. Sign into the Infor10 Warehouse Mobility Administration Tool.
2. Select **System Admin > Maintain Printers**.
3. Click **Add New**.
4. In the **Details** section under the **Printer List**, specify this information:

Printer ID

Specify a name by which the network can identify the printer.

Display Name

Specify a name by which scanner users can identify the printer.

Network Path

Specify the directory location for network communication with the printer.

Description

Specify a brief description of the printer.

The screenshot shows the Infor Barcode software interface. At the top, it displays the Infor Barcode logo and the text "powered by Infor". The environment is set to "Erplnfp7" and the user is "Admin".

The main content area is titled "Maintain Printers - Printer List" and contains a table with the following data:

No	Printer Id	Display Name	Network Path	Description
1	test	test1	\\test1	test desc
2	Intermec	Intermec	\\Intermec	Intermec Printer
3	NECSuperScript870	NECSuperScript870	NECSuperScript870	NECSuperScript870
4	tek	tek	tek	tek
5	HariPrimo	HariPrimo	HariPrimo	HariPrimo

Below the table is a "Details" section with four input fields for editing a printer's configuration:

- Printer Id:
- Display Name:
- Network Path:
- Description:

5. Click **Save**.