



▶▶ Platform Products

Query Administrator's Guide

Notice

The information in this document is subject to change without notice.

This document contains confidential and proprietary information protected by copyright. All rights are reserved. Infinium Software, Inc., grants permission to customers who have a current and valid license agreement to make copies of this document solely for use by their employees. Except for the purpose stated above, no part of this document may be reproduced or used in any form or by any means without prior written permission from Infinium Software, Inc. Customers shall not alter or remove any Infinium Software, Inc., or other copyright notice from this document and each authorized reproduced copy shall include, be subject to, and shall be covered by, the Infinium Software, Inc., copyright on the original document.

Infinium Software, Inc., shall not be liable for any technical or editorial errors contained herein or for incidental or consequential damages resulting from the performance, furnishing, or use of this material.

Copyright © 1993 – 1999 by Infinium Software, Inc. All rights reserved.

Infinium is a registered trademark of Infinium Software, Inc. Other trademarks or trade names referenced are the service marks, trademarks, or registered trademarks of the respective manufacturer.

Printing History

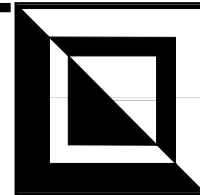
First Edition: September 1993

Latest Edition: August 1999 (Infinium QY Release 2.0)

Document Number:

PQY9507101436-03

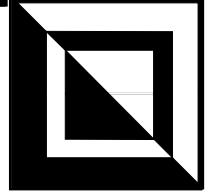
Table of Contents



About This Guide	1
Who Should Read This Guide?.....	1
What Is the Purpose of This Guide?	1
How Is This Guide Organized?.....	2
What Conventions Are Used in This Guide?.....	3
Where Can You Find Related Information?	3
Part 1 Introduction to Infinium Query Administration	1-1
What Are the Infinium Query Functions?.....	1-2
What Setups Does Infinium Query Require?	1-4
What Can Users AM2000 and QY2000 Do?	1-5
Part 2 Using the Administrative Functions	2-1
Overriding Library, File, or Field Descriptions	2-3
Overriding a Library Description.....	2-3
Overriding a File Description	2-5
Overriding a Field Description	2-8
Granting/Revoking Authority to Override Descriptions.....	2-11
Granting or Revoking Interactive Run Authority.....	2-13
Purging Failed Report Outputs	2-15
Part 3 Creating a Job Control to Submit a Report from a Menu	3-1
Overview of Adding Reports to Application Menus.....	3-2
Example of Efficiency	3-2
Infinium Application Manager Tasks Involved.....	3-2
User's Procedure	3-3

Creating the Infinium Application Manager Job Control	3-4
About the Batch Run Screen	3-8
Adding the Job Control to a Menu	3-9
Part 4 Creating Printer Controls	4-1
Understanding Printer Controls	4-2
What Are Printer Controls?	4-2
What Printer Controls Does Infinium Query Require?	4-2
What Screens Are Used to Create Printer Controls?	4-2
Identifying the Printer Controls You Need	4-4
Analyzing Your Forms	4-6
Calculating the <i>Page Length</i> Value	4-6
Calculating the <i>Overflow Line Number</i> Value.....	4-6
Calculating the <i>Page Width</i> Value.....	4-7
Creating a Printer Control	4-8
Identifying Your Infinium Query Versions	4-8
Processing the Infinium Application Manager Printer Controls Screen	4-8
Processing IBM Override with Printer File Screen Page 1	4-11
Processing IBM Override with Printer File Screen Page 2	4-13
Processing IBM Override with Printer File Screen Page 3	4-14
Processing IBM Override with Printer File Screen Page 4	4-15
Processing IBM Override with Printer File Screen Page 5	4-17
Processing IBM Override with Printer File Screen Page 6	4-18
Processing IBM Override with Printer File Screen Additional Pages.....	4-19
Processing the Re-Displayed Printer Controls Screen.....	4-20

About This Guide



Who Should Read This Guide?

This guide is for the Infinium Query Administrator at your site responsible for setting up the system and maintaining certain features to facilitate efficient and easy on-going use of the system.

Refer to the next topic for more information about these responsibilities.

What Is the Purpose of This Guide?

The purpose of this guide is to provide the Infinium Query Administrator with background and instructions for fulfilling the administrator's responsibilities. These responsibilities include:

- Overriding default library, file, or field descriptions to help users easily identify these libraries, files, and fields for local purposes
- Granting or revoking other users' authority to override library, file, and field descriptions
- Authorizing users to perform interactive queries
- Purging stray outputs left by incomplete report runs
- Using Infinium Application Manager to add Infinium Query reports to menus
- Using Infinium Application Manager to create and maintain printer controls used by Infinium Query

The Infinium Query administrator at your site may also be responsible for maintaining Infinium Query security. See the *Infinium Query Guide to Security* for detailed information about Infinium Query security functions.

How Is This Guide Organized?

The information in this guide is organized as follows:

Part	Title	Contents
1	Introduction to Infinium Query Administration	Provides background on the types of Infinium Query functions, set-up requirements, and key user profiles
2	Using the Administrative Functions	Provides instructions for using the <i>Override Descriptions</i> , <i>Grant/Revoke Interactive Run</i> , and <i>Purge Failed Report Output</i> functions
3	Creating a Job Control to Submit a Report from a Menu	Provides background and instructions for enabling users to run a locally-defined report by selecting the report from a menu
4	Creating Printer Controls	Provides background and instructions for creating the required printer controls QYTOUTP and QYTLABEL, as well as optional printer controls

What Conventions Are Used in This Guide?

The following conventions are used in this guide:

Convention	Description	Example
<code>F4</code>	Keys found on your keyboard are represented by a key symbol.	Press <code>F4</code> to display a list.
<i>Menu Options</i> and <i>Field Names</i>	Menu options and field names found within the system are represented by <i>italics</i> . This guide uses the same upper and lower case patterns as the system displays on your terminal.	Select <i>Administrative Functions</i> . Type a valid value in the <i>Grant</i> field.
Data you type and System-generated Messages	Characters, numbers, words, and phrases that you type or messages the system displays are represented by a bold monospaced typeface.	Type 1 in the <i>Grant</i> field. The system displays the following message: Invalid entry
Select...	This guide instructs you when to select an option from a menu. To select a menu option, position your cursor next to the desired option, type any non-blank character and then press <code>Enter</code> .	Select <i>Administrative Functions</i> .

Where Can You Find Related Information?

For more information about Infinium Query, refer to the following publications:

Infinium Query Installing Release 2.0

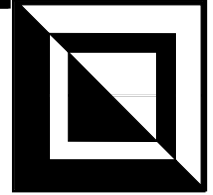
Infinium Query Release 2.0 Notes

Guide to Infinium Query

Infinium Query Guide to Security

Notes

Part 1



Introduction to Infinium Query Administration

This guide assumes basic familiarity with the use of Infinium Query to define and generate customized Infinium database application reports. Refer to the *Guide to Infinium Query* for background on this use of Infinium Query.

This part of the guide provides background about Infinium Query administration, including answers to the following questions.

Topic	Page
What Are the Infinium Query Functions?	1-2
What Setups Does Infinium Query Require?	1-4
What Can Users AM2000 and QY2000 Do?	1-5

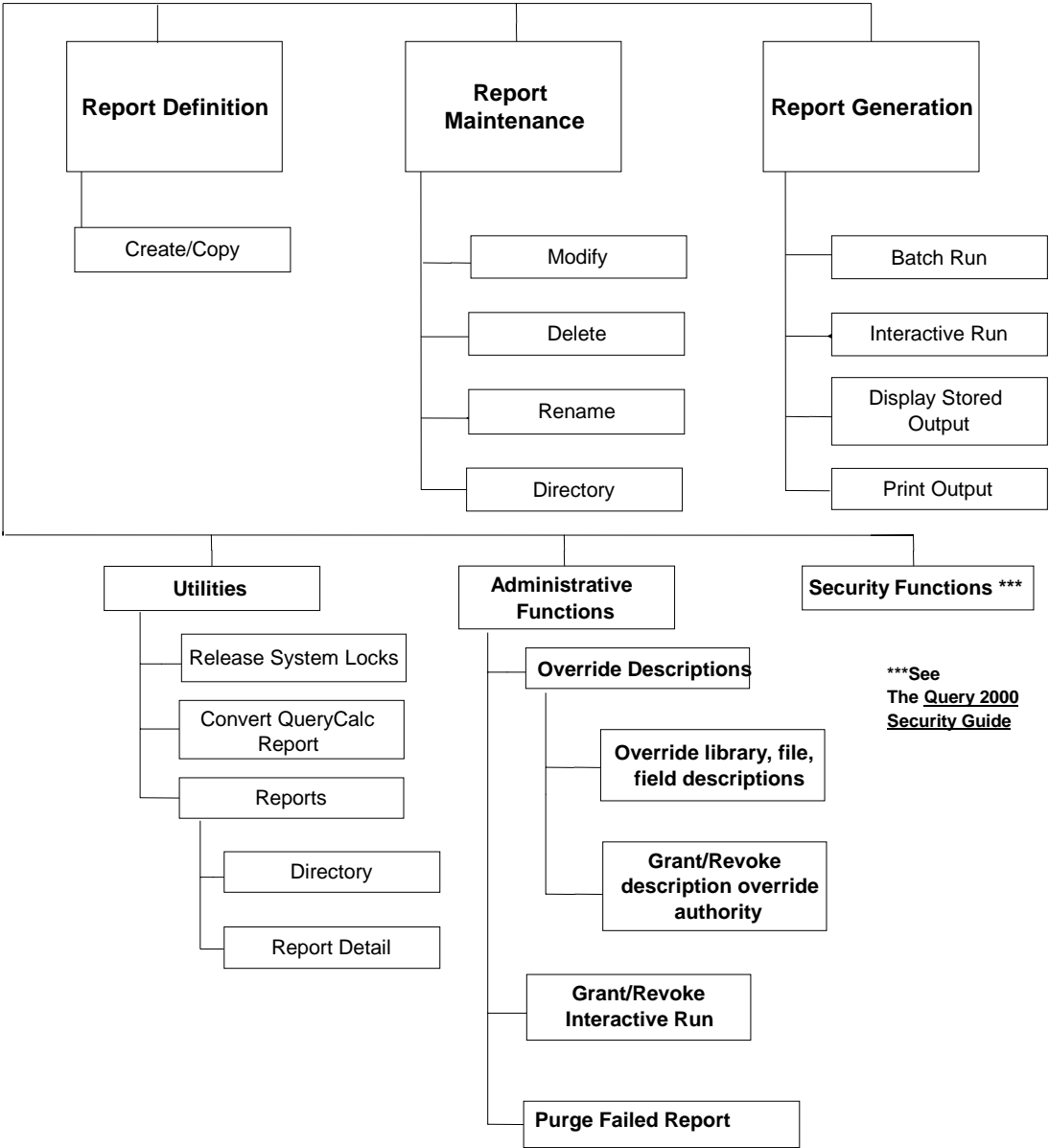
What Are the Infinium Query Functions?

Infinium Query provides the following functions for these users.

Type of User	Types of Functions
General User	Report Definition Report Maintenance Report Generation Utilities
Infinium Query Administrator	Administrative Functions: Override Descriptions Grant/Revoke Interactive Run Purge Failed Report Output
Security Supervisor	Security Functions

The diagram on the following page summarizes the Infinium Query functions other than the security functions. For information about the security functions, refer to the *Infinium Query Security Guide*.

Infinium Query Main Menu



What Setups Does Infinium Query Require?

Before anyone at your site can define and generate Infinium Query reports, the Infinium Query Security Supervisor and the Infinium Query Administrator must complete two procedures:

1. The Infinium Query Security Supervisor must run the appropriate conversions of security information from the database application records to Infinium Query records for any Infinium applications and any other database libraries that will be used in Infinium Query reports.

Refer to the *Infinium Query Security Guide* for details.

2. The Infinium Query Administrator must define at least two printer controls for Infinium Query. The administrator can also define additional optional printer controls.

Refer to Part 4 in this guide for details about the various printer controls and instructions on defining those controls.

The Infinium Query Administrator can modify library, file, and field descriptions to clarify these descriptions for local use. The administrator can make these description edits as part of the setup process, or at any time they become useful to local users. Also, the administrator can authorize certain other users to perform these description edits.

What Can Users AM2000 and QY2000 Do?

The following table identifies how the **AM2000** and **QY2000** user profiles are set up:

User Profile	Set-Up Procedure
AM2000	Automatically created when you install Infinium Application Manager
QY2000	Manually created at your site For setting up user profiles, refer to Part 7 of the <i>Infinium Guide to Application Manager</i> .

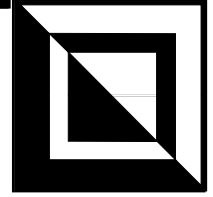
Infinium Query grants special privileges to the **QY2000** and **AM2000** user profiles. The following table summarizes those privileges.

User Profile	Authority Level	Privileges
AM2000	1	Access to all Infinium Query Administrative Functions
QY2000	See Note	Access to all Infinium Query Administrative Functions Ability to grant administrative authority to any user who has a Infinium Query authority level of 1 or 2.

Note: Regardless of the authority level assigned to **QY2000** in the Infinium Application Manager user profile, Infinium Query always grants **QY2000** authority level 0, the highest possible level. This level 0

is only for the Infinium Query system. Infinium Query accepts the level assigned to **QY2000** in Infinium Application Manager when working in other systems.

Part 2



Using the Administrative Functions

This part of the guide explains how to use the *Administrative Functions* menu options to perform the following tasks.

Topic	Page
Overriding Library, File, or Field Descriptions	2-3
Granting/Revoking Authority to Override Descriptions	2-11
Granting or Revoking Interactive Run Authority	2-13
Purging Failed Report Outputs	2-15

To access the *Administrative Functions* menu, select *Administrative Functions* at the Infinium Query main menu.

Figure 2-1 illustrates the *Administrative Functions* menu.

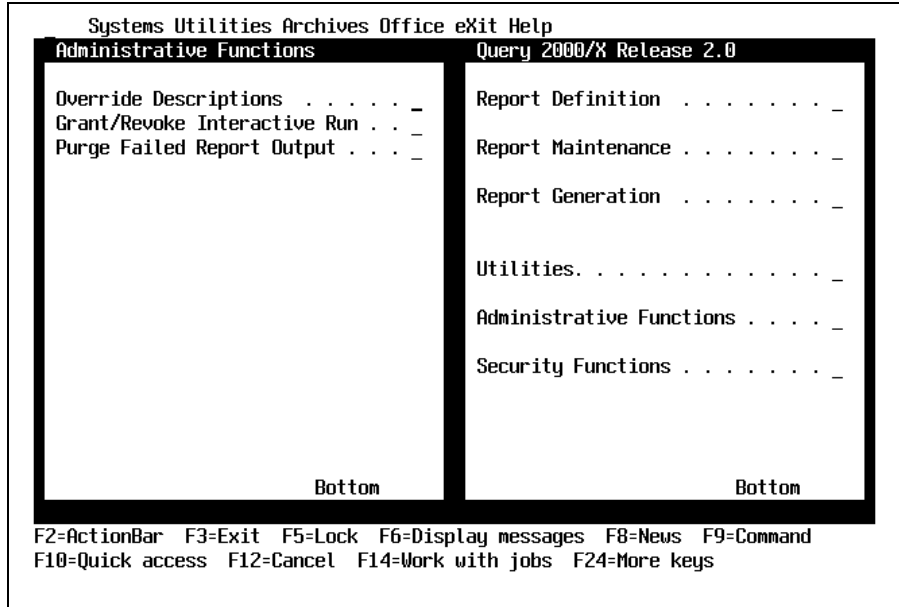


Figure 2-1: *Administrative Functions* menu

Overriding Library, File, or Field Descriptions

During conversion of security data from a database application's security records to Infinium Query security records, the system also copies library, file, and field descriptions. Infinium Query lets authorized users override the description of any of these libraries, files, or fields to make it easier for users to identify items they want for report definitions.

Note: Only users authorized to use the *Override Descriptions* function can make any changes to a library, file, or field description.

The following pages provide procedural instructions for performing these description overrides.

Overriding a Library Description

Perform the following steps to override the description of a library:

1. Sign on as **QY2000** or **AM2000**.
2. Select *Administrative Functions* from the Infinium Query main menu.
3. Select *Override Descriptions*.

The system displays the following screen.



Figure 2-2: Override Descriptions screen

4. Type **1** in the selection field and then press **Enter**. The system displays the Library Descriptions screen.

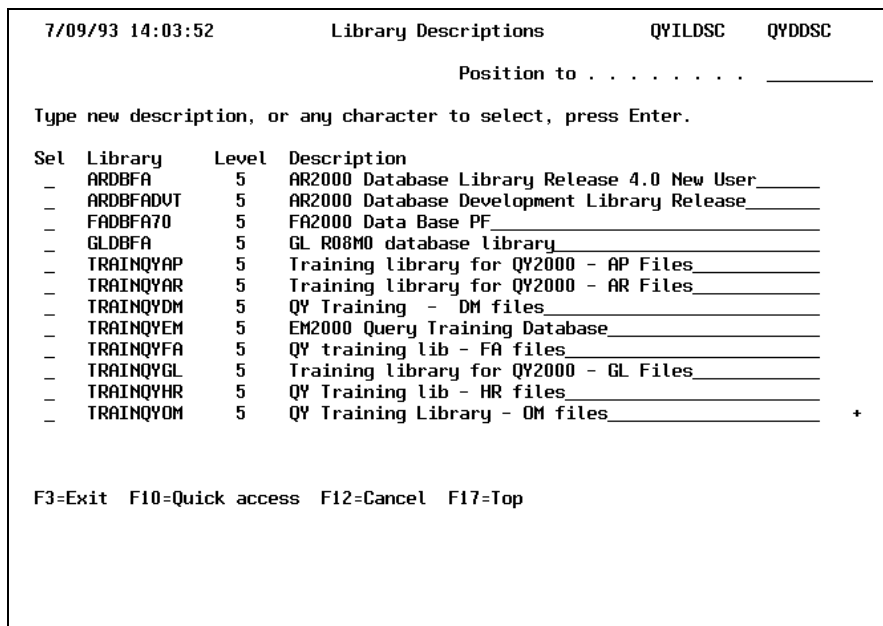


Figure 2-3: Library Descriptions screen

This screen displays the following:

- A list of the libraries that have been converted for Infinium Query use

- The authority level assigned to each of these libraries
 - The current Infinium Query description of each of these libraries
5. Find the library whose description you want to change and type over or modify the old description.

Repeat for additional libraries if applicable.

6. Press **[Enter]** to submit the change or changes.
7. When done changing library descriptions, press **[F3]** to exit this function.

The system displays the following confirmation window.

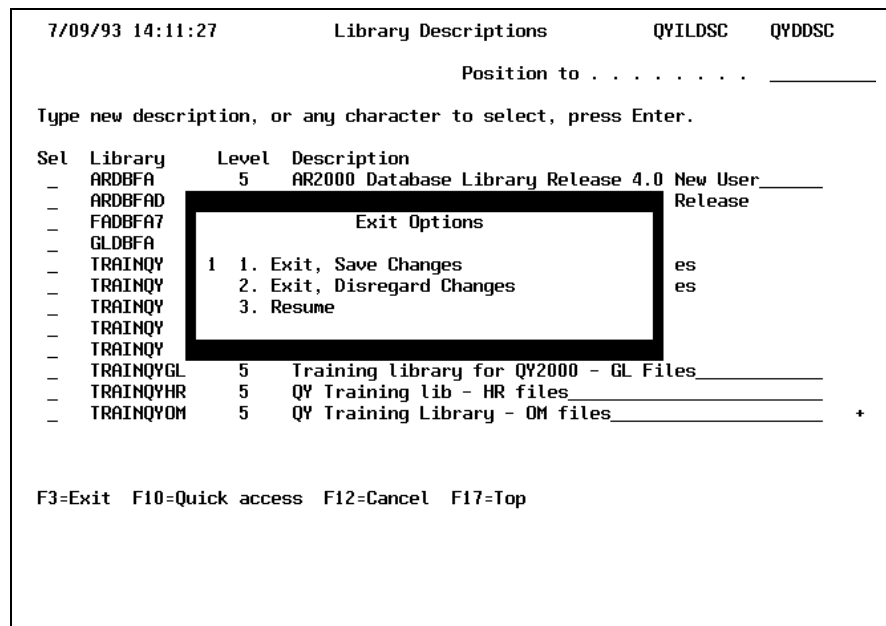


Figure 2-4: Exit Options panel

8. Type **1** and press **[Enter]** to save your changes and exit.
9. Press **[F3]** repeatedly until you return to the desired menu level.

Overriding a File Description

Perform the following steps to override the description of a file:

1. Sign on as **QY2000** or **AM2000**.
2. At the Infinium Query main menu select *Administrative Functions*.

3. Select *Override Descriptions*.

The system displays the following screen:

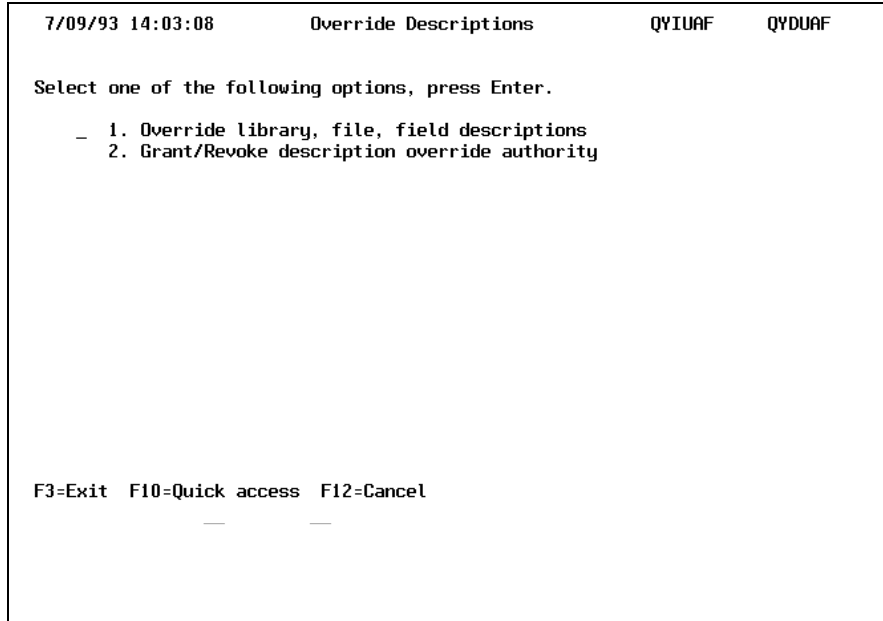


Figure 2-5: *Override Descriptions* screen

4. Type **1** in the selection field and then press **Enter**.

The system displays the Library Descriptions screen.

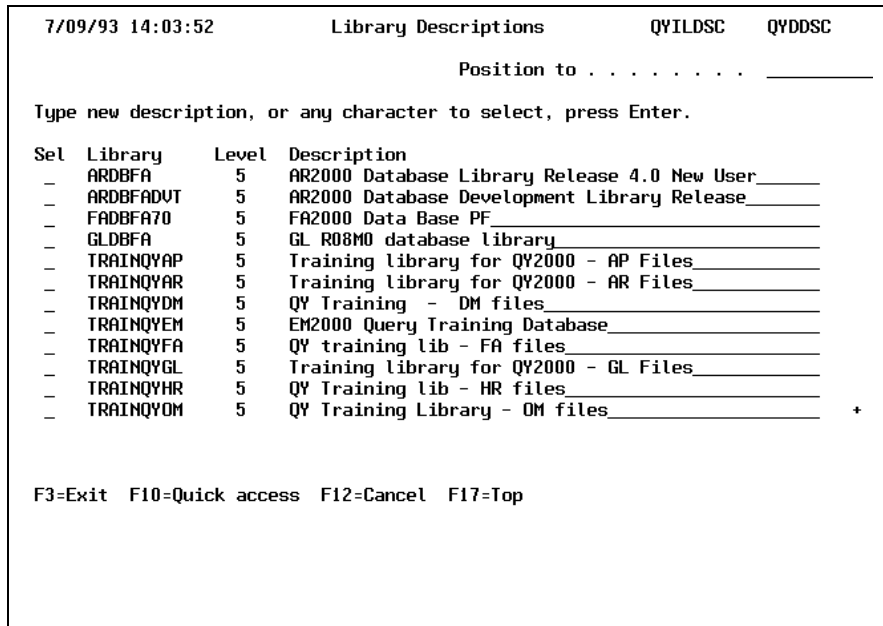


Figure 2-6: Library Descriptions screen

5. Type any character in the *Sel* field next to the library that contains the file whose description you want to change.
6. Press to display the File Descriptions screen, which lists all the files accessible to Infinium Query in the selected library, as well as the current description of each listed file.

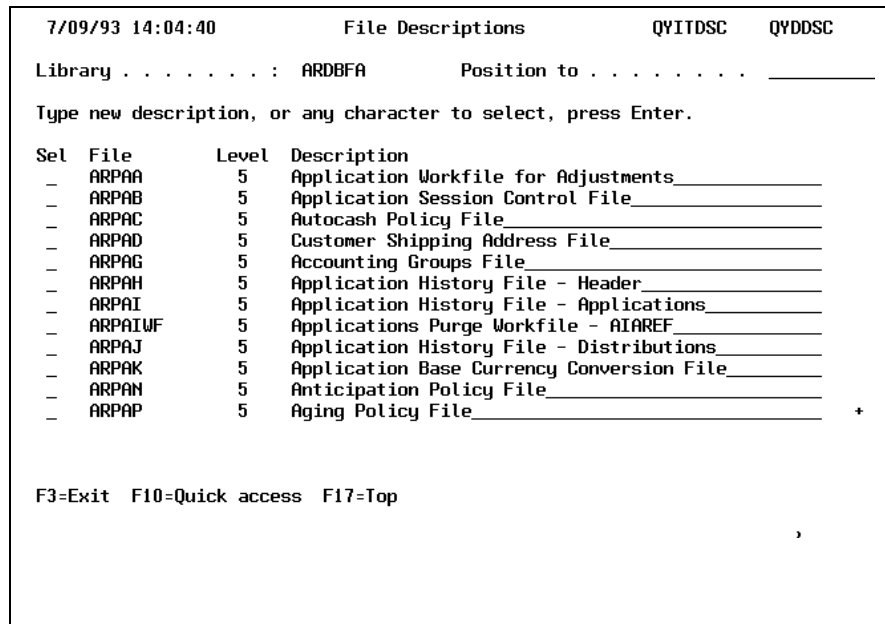


Figure 2-7: File Descriptions screen

7. Find the file whose description you want to change. Type over or modify the existing description.
8. Repeat for additional file descriptions if applicable.
9. Press **[Enter]** to submit the change.
10. When done changing file descriptions, press **[F3]** to exit this function.
The system displays the Exit Options confirmation panel.
11. Type **1** and press **[Enter]** to save your changes and exit.
12. Press **[F3]** repeatedly until you exit to the desired menu level.

Overriding a Field Description

Perform the following steps to override the description of a field:

1. Sign on to your system as **QY2000** or **AM2000**.
2. At the Infinium Query main menu select *Administrative Functions*.
3. Select *Override Descriptions*.

The system displays the Override Descriptions screen.



Figure 2-8: Override Descriptions screen

4. Type **1** in the selection field and then press **[Enter]**. The system displays the Library Descriptions screen.

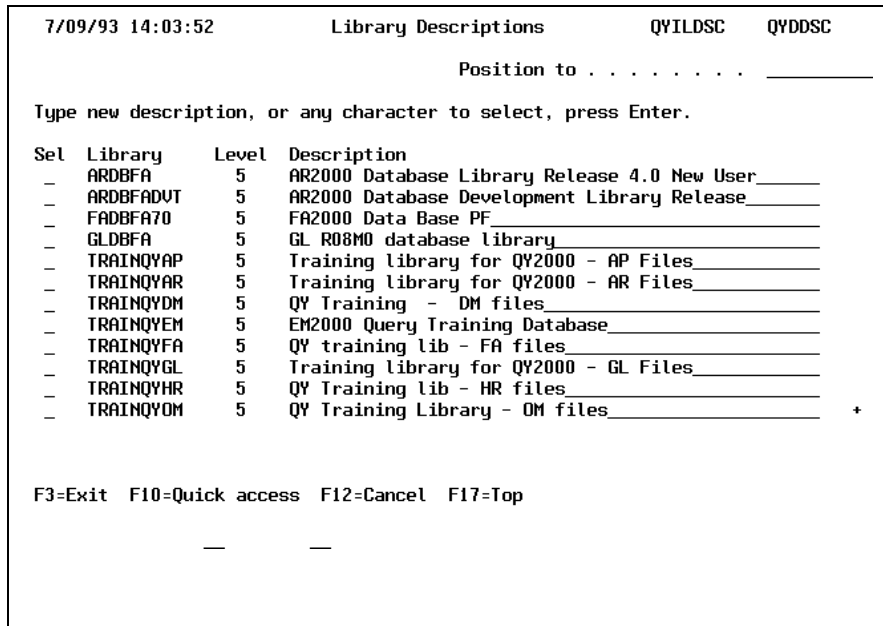


Figure 2-9: Library Descriptions screen

5. Type any character in the *Sel* field next to the library that contains the file with the field whose description you want to change.
6. Press to display the File Descriptions screen, which lists all the authorized files available to Infinium Query in the selected library, as well as the current description of each listed file.

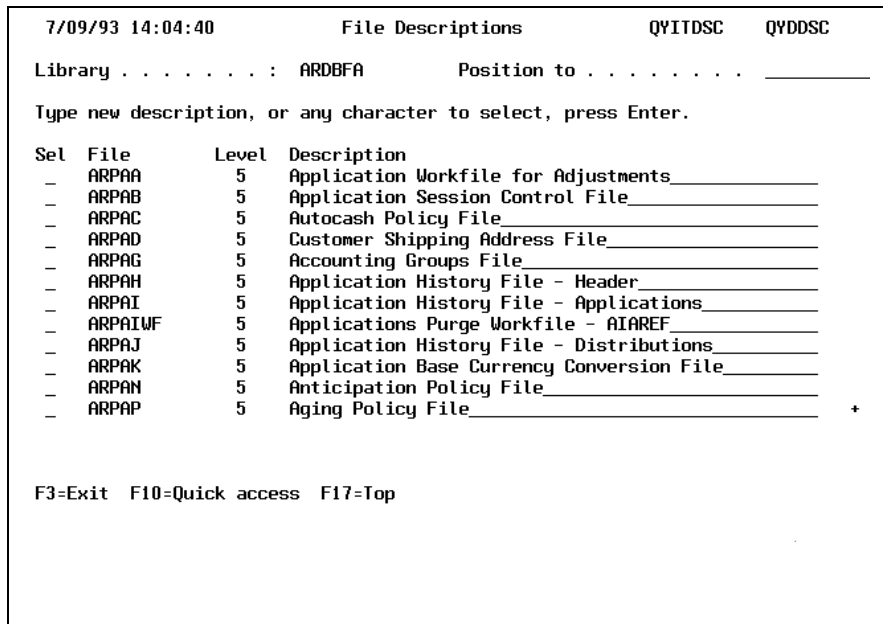


Figure 2-10: File Descriptions screen

7. Type any character in the *Sel* field next to the file that contains the field whose description you want to change.
8. Press **Enter** to display the Field Descriptions screen, which lists all the fields available to Infinium Query in the selected file, as well as the current description of each listed field.

```

8/24/93 13:34:41          Field Descriptions          QYICDSC  QYDDSC
Library . . . . . : HRDBFA          Position to . . . . . _____
File . . . . . : PEPJA
Type field descriptions, press Enter.

Field      Level  Description
JAPA8      5      POSITION APPLIED DATE _____
JAPREF     5      POSITION PREFERENCE NUMBER _____
JASCHP     5      SCHEDULE PREFERENCE _____
JASPRF     5      SHIFT PREFERENCE _____
JASREQ     5      SALARY REQUIREMENTS _____
JASTAT     5      STATUS CODE _____
JATIMQ     5      APPLICATION SEQ # _____

F3=Exit  F10=Quick access  F17=Top

```

Figure 2-11: Field Descriptions screen

9. Find the field whose description you want to change. Type over or modify the existing description. Repeat for other fields.

Note: If the list of fields is long and you know a target field's name such as **JATIMQ**, you can type the field's name in the *Position to* field at the top right of the screen and press **Enter** to move directly to that field in this list.
10. Press **Enter** to submit your change or changes. The system redisplay the Field Descriptions screen with the updated descriptions so that you can review your edits.
11. When you have finished changing the desired field description or descriptions, press **F3** to exit this function. The system displays the Exit Options confirmation panel.
12. Type **1** and press **Enter** to save your changes and exit.
13. Press **F3** repeatedly until you return to the desired menu level.

Granting/Revoking Authority to Override Descriptions

Perform the following steps to grant or revoke a user's ability to override description of libraries, files, and fields.

1. Sign on as **QY2000** or **AM2000**.
2. At the Infinium Query main menu select *Administrative Functions*.
3. Select *Override Descriptions*. The system displays the Override Descriptions screen.



Figure 2-12: *Override Descriptions* screen

4. Type **2** in the selection field and press **Enter**.

The system displays the Description Change Authority screen, which lists all your Infinium Query users who have authority level 1 or 2. This system displays **0** in the *Grant* field for users who are not

authorized to change descriptions.

```
7/24/95 17:37:20      Description Change Authority      QYISFA      QYDUAF
-----
Type grant option(s), press Enter.

Grant options: 1=Yes 0=No

User ID   Level   Grant   Description
VMR       1       0
WAS       1       0

-----
F3=Exit  F10=Quick access  F17=Top
```

Figure 2-13: Description Change Authority screen

5. Type **1** in the *Grant* field to let that user change descriptions of libraries, files and fields.

Repeat for each applicable user.

6. Press to submit your change or changes.

The system redisplay the screen, showing your edits.

7. When done with the Description Change Authority screen, press to exit this function.

The system displays the Exit Options panel.

8. Type **1** and press to save your changes and exit.
9. Press repeatedly until you return to the desired menu level.

Granting or Revoking Interactive Run Authority

Infinium Query lets you run reports in batch mode or interactively.

Running a report interactively uses more system resources than running the report in batch mode. Infinium Query therefore lets you limit the number of users at your site who can run reports interactively.

Perform the following steps to grant or revoke a user's ability to run reports interactively:

1. Sign on to your system as **QY2000** or **AM2000**.
2. At the Infinium Query main menu select *Administrative Functions*.
3. Select *Grant/Revoke Interactive Run*. The system displays the Grant Interactive Run Authority screen.

User ID	Level	Grant	Description
OG	5	0	Olga Garzaro
PAD	5	0	Pat Orellana
PESEC	5	0	Test profile
QYDEV	1	1	QY2000 DEVELOPMENT PROFILE - RESTRICTED
QYT01	2	1	QY2000 Training and Test Profile 1
QYT02	2	1	QY2000 Training and Test Profile 2
QYT03	2	1	QY2000 Training and Test Profile 3
QYT04	2	1	QY2000 Training and Test Profile 4
QYT05	2	1	QY2000 Training and Testing Profile 5
QYT06	2	1	QY2000 Training and Test Profile 6
QYT07	2	1	QY2000 Training and Test Profile 7
QYT08	2	1	QY2000 Training and Test Profile 8

Figure 2-14: Grant Interactive Run Authority screen

The Grant Interactive Run Authority screen lists users who are currently authorized to use Infinium Query. The system displays **0** next to users not authorized to run reports interactively. Zero is the default value.

4. To change a user's current authority, move the cursor to the Grant column and type **0** or **1** as appropriate.
5. Press to submit the change.
6. When done changing the desired authority or authorities, press to exit this function. The system displays the Exit Options confirmation panel.
7. Type **1** and press to save your changes and exit.
8. Press repeatedly until you return to the desired menu level.

Purging Failed Report Outputs

When users cancel Infinium Query report batch jobs before completion, and when an Infinium Query report is not completed for some other reason, the system is left working with materials that have no further use. For example, the system retains an extra working copy of the report definition and partially completed output for the report.

These materials can build up over time, causing certain files to grow very large. Infinium Query therefore provides a *Purge Failed Report Output* function that lets you periodically purge the failed report outputs from your files.

Perform the following steps to purge the failed report outputs:

1. At the Infinium Query main menu select *Administrative Functions*.
2. Select *Purge Failed Report Output*.
3. The system displays a warning that running this function during the generation of reports may result in abnormal termination of those reports. Press **Enter** to continue, or press **F12** to cancel.

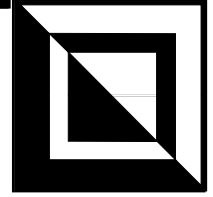
Note: If you cancel the function, the system returns you to the *Administrative Functions* menu. If you press **Enter**, continue to step 4.

The system displays a message that all failed report output has been purged or a message that no failed report output was found.

4. Press **F12** to return to the *Administrative Functions* menu.

Notes

Part 3



Creating a Job Control to Submit a Report from a Menu

The following table summarizes the topics discussed in this part of the guide.

Topic	Page
Overview of Adding Reports to Application Menus	3-2
Creating the Infinium Application Manager Job Control	3-4
About the Batch Run Screen	3-8
Adding the Job Control to a Menu	3-9

Overview of Adding Reports to Application Menus

Example of Efficiency

Infinium Query lets you add a customized report to a menu for convenience and efficiency. For example, suppose a personnel specialist needs to run the Employee Minor Dependents report on a regular basis to pick up information on new dependents.

You could add an *Employee Minor Dependents Rpt* option to the Infinium Human Resources *Administrative Reports* menu to let the user run this report directly from Infinium Human Resources. The user will not have to log on to Infinium Query and bring up the report definition.

Infinium Application Manager Tasks Involved

Setting up an Infinium Query menu option for a report entails two steps:

1. In Infinium Application Manager, create the job control that submits the report, as explained later in this section. You can specify certain Batch Run screen defaults for the new menu option, to control, for example, whether prompting for run-specific selection criteria and printing the selection criteria are defaults.

Note: A sample job control called RUNREPX is included in all Infinium Query shipments. You can use this sample job control as a guide to setting up your own job control.

2. Also in Infinium Application Manager, create the menu option for that job control, as explained in the *Infinium Guide to Application Manager*.

User's Procedure

Once you have added the menu option to the desired Infinium application menu, your users can run the report by selecting that option.

When the user selects the option from the menu, the system interactively displays the Infinium Query Batch Run screen. That is, selecting the menu option is a shortcut alternative to logging on to Infinium Query, selecting *Report Generation*, and selecting *Batch Run*.

If you have specified a Batch Run screen default of no prompting for selection criteria, the user can then just press at the Batch Run screen to submit the report as a batch job without performing any edits.

Note: Use of the menu option always entails interactive display of the Batch Run screen followed by submission of the report as a batch job.

The following pages provide instructions for creating the job control and reference the manual containing instructions for adding the option to a menu.

Creating the Infinium Application Manager Job Control

Perform the following steps to create the Infinium Application Manager job control that submits the report:

1. Sign on as **AM2000**.
2. At the Infinium Application Manager main menu select *Job Controls*.

The system displays the Job Control Maintenance screen with job control identifier fields.

7/25/95	7:38:02	Job Control Maintenance	AMGJCM	AMDJCM
System	<u>QY</u> +	Release/Modification	<u>02</u>	<u>0</u>
Job name	<u>RUNEMPLDEP</u> +			
Job type	<u>C</u> X=Program, L=Linking T=Text, M=Menu C=Command, P=PC			
F3=Exit F4=Prompt F10=Quick access F12=Cancel F18=Assoc. process				

Figure 3-1: Job Control Maintenance header screen

3. Type **QY** in the *System* field.
4. Type your current Infinium Query release and modification numbers such as **02 0** for Release 2.0 in the *Release/Modification* field.

- Type a valid name in the *Job name* field, such as RUNEMPLDEP for an Employee Minor Dependents report. You must start the name with a letter. You can use up to ten alphanumeric characters.

With the cursor in the *Job name* field, you can press **F4** to display a list of current names and check if a name has already been used.

- Type **C** in the *Job type* field, for Command.
- Press **Enter** to display the detailed version of the Job Control Maintenance screen.

9/19/95	8:27:08	Job Control Maintenance	AMGJCM	AMDJCM
System	QY	Rls/Mod	02	0
Job name	RUNEMPLDEP	Quick Access name . . .	RUNEMPLDEP	
Job type	C	Submitted name	RUNEMPLDEP	
Description	<u>Employee Minor Dependents Rpt</u>			
Active	<u>Y</u> Y=Yes,N=No	Allow group jobs . . .	<u>N</u> Y=Yes,N=No	
Authority level . . .	<u>4</u> 1-9	Restricted job	<u>N</u> Y=Yes,N=No	
Pass parameters . . .	<u>N</u> Y=Yes,N=No			
Command	<u>CALL QYCRUNREP PARM('EMPLDEP' '2' ' ' 'Y' 'Y' 'QYTOUP')</u>			
<hr/>				
Job processing . . .	<u>I</u> B=Batch, I=Interactive			
Job logging	<u>N</u> Y=Yes,N=No	Hold job	<u>N</u> Y=Yes,N=No	
Job queue	<u>*JOB</u>	Multi-threading	<u>N</u> Y=Yes,N=No	
Job description . . .	<u>*VERSION</u>			
<hr/>				
F3=Exit F4=Prompt F5=PC Information F24=More keys				

Figure 3-2: Job Control Maintenance (detailed) screen

- Use the following information to complete the data in the detailed version of the Job Control Maintenance screen.

System, Rls/Mod, Job name, and Job type

The system displays the job control identifying values you typed at the first Job Control Maintenance screen. You cannot edit these values at this second Job Control Maintenance screen.

Description

Type the exact description that you want displayed as the menu option when this job control is added to an application as a menu option.

Command

Type the following command string in the *Command* field, replacing the descriptions within the parameter quotation marks with your specific data, as explained later in the explanation of this *Command* field.

CALL QYCRUNREP PARM ('Report Name' 'Output Option' 'Physical file' 'Selection Criteria Y/N' 'Print Selection Criteria Y/N' 'Override Printer Control')

These parameters are the values the user would ordinarily enter at the Batch Run screen if the user were using the Infinium Query *Batch Run* function. The parameters become defaults on the Batch Run screen displayed when the user selects the menu option for this job control.

Refer to the table below for details.

Note: If you choose to leave a parameter blank, ensure that you type a single space between the single quotation marks for that parameter.

Batch Run Screen Field (Job Control Command Field Parameter)	Action (to Set Batch Run Screen Default)
<i>Report Name</i>	Type the name of the Infinium Query report definition.
<i>Output Option</i>	Type the output option number, picking one of the following: 2 for standard report output 4 for labels 5 for formatted PC file to be downloaded 6 for unformatted data-only PC file to be downloaded 7 for a physical file
<i>Physical file</i>	If you typed 7 for the Output Option parameter, type a name for the physical file; use no more than 10 characters. Otherwise type a single space.
<i>Modify Selection Criteria</i>	Type Y to specify prompting for modification of selection criteria prior to submission of the report as a batch job. Note that these modifications apply only to the current run and do not affect the selection criteria specified in the definition itself. Type N to specify bypassing selection modification prompting.
<i>Print Selection Criteria</i>	Type Y to specify printing a report cover page that summarizes the selection criteria used to generate the current report output. Type N to omit this Selection Criteria page from the output.

Batch Run Screen Field (Job Control <i>Command</i> Field Parameter)	Action (to Set Batch Run Screen Default)
<i>Override Printer Control</i>	<p>Type a blank space for this parameter to indicate use of the standard Infinium Query printer control for the current job, such as QYTOUTP for a standard report or QYTLABEL for labels.</p> <p>You can type the name of an alternative printer control defined in Infinium Application Manager to override the standard control.</p>

Job Processing

Type **I** for Interactive in the Job Control Maintenance screen's *Job Processing* field since this control displays the Batch Run screen. When the user completes processing this interactively displayed screen, the system submits the report for batch mode generation.

9. Edit other Job Control Maintenance fields if applicable, or accept the defaults. When done, press **F3** to display the Exit Options panel, type **1**, and press **Enter** to save your work and exit.

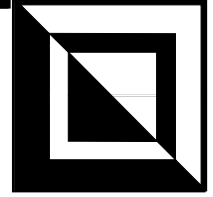
Adding the Job Control to a Menu

Refer to the *Infinium Guide to Application Manager* (formerly the *Infinium Application Manager AMServer Quick Reference Guide*) for details about how to add the job control to a menu.

After you have added the job control to a menu, a user can run the report by selecting the appropriate menu option. When the report is selected this way, the system displays the Batch Run screen so that the user can change any of the parameters you defined in the job control.

Notes

Part 4



Creating Printer Controls

The following table summarizes the topics discussed in this part of the guide.

Topic	Page
Understanding Printer Controls	4-2
Identifying the Printer Controls You Need	4-4
Analyzing Your Forms	4-6
Creating a Printer Control	4-8

Understanding Printer Controls

What Are Printer Controls?

Printer controls define the format of printed output and related printing information. Examples:

- The printed page's length and width
- How many lines to print per inch, and how many characters per line
- To which print queue (therefore to which printer) to send the output

What Printer Controls Does Infinium Query Require?

Infinium Query requires you to set up at least the following two printer controls so that you can print standard reports and labels.

- QYTOUTP, the default control for standard reports
- QYTLABEL, the default control for labels

Refer to the Identifying the Printer Controls You Need topic later in this part of this guide for information about optional printer controls.

What Screens Are Used to Create Printer Controls?

Creation of a Infinium Query printer control entails using the following screens:

- The Infinium Application Manager Printer Controls screen
- The IBM Override with Printer File (OVRPRTF) screen

This screen consists of a single form with six pages you move between by pressing `Enter` and an additional two pages you access by pressing `F10` if you want to specify certain additional parameters.

Infinium Application Manager automatically displays both of these screens in the appropriate order when you select the *Printer Controls* function at the Infinium Application Manager main menu.

Inclusion of the IBM-supplied printer file overrides in the *Printer Controls* function ensures that Infinium Application Manager uses the latest version of the Override Printer File (OVRPRTF) command.

For more information about printer controls refer to the following:

- *Infinium Guide to Application Manager*
- The OVRPRTF command entry in IBM's *Programming: Control Language Reference MONxxx through WRKxxx Commands*

Identifying the Printer Controls You Need

The following table identifies the printer controls for batch outputs and other Infinium Query outputs. Refer to the warning on the following page.

Conditions	Printer Control Requirements
You generate regular reports.	Control QYTOUTP is required. If your site runs more than one version of Infinium Query (such as production and training versions), you must have a separate QYTOUTP printer control for each version of Infinium Query.
You generate labels.	Control QYTLABEL is required. If your site runs more than one version of Infinium Query (such as production and training versions), you must have a separate QYTOUTP printer control for each version of Infinium Query.
You need a user-specific control for regular reports or labels or both.	Must define an additional QYTOUTP or QYTLABEL printer control or both with the user's user profile name supplied in the printer control's <i>User profile</i> field.
You need a report-specific control for a particular regular report or label report.	Must define an additional printer control similar to QYTOUTP or QYTLABEL with the user-defined report definition name in the control's <i>Printer file</i> field.
You want to override the default printer control for printing a <i>Directory</i> report.	Must define printer control QYTRPRPT.
You want to override the default printer control for the Report Detail Report.	Must define printer control QYTRPTDTL.

Conditions	Printer Control Requirements
You want to override the default printer control for generating a regular or label report in batch mode for that batch job only.	Must have the desired printer control. You must type that printer control's name in the <i>Override Printer Control</i> field at the Batch Run screen during report generation.



WARNING

Always type a printer file (printer control) name in the Printer Controls screen's *Printer file* field. Never leave this field blank. If you specify **QY** as the system and leave the *Printer file* field blank, all reports, including labels, are printed using the values you specify in this blank printer control. That is, this printer control with the blank *Printer file* value overrides all other printer controls for Infinium Query reports, whether or not it applies to those reports.

This can cause particular problems with label printing, since label reports require radically different page length and width specifications than other outputs. For example, the typical label format "page" is six lines long and a maximum of 60 characters wide.

Note: If you press **[F3]** at the Printer Controls screen without having typed a *User profile* or *Printer file* field value and then save at the Exit Options window, the system creates a "blank-blank" printer control. Therefore, always press **[F12]** rather than **[F3]** if you decide to cancel the printer controls definition process.

Analyzing Your Forms

Before setting up or editing the printer controls, gather information about your forms in order to be able to supply the correct value in each applicable field in each printer control record.

Complete the following tasks to gather this information.

Calculating the *Page Length Value*

The *Page length* field specifies how many lines there are per page of printed output.

Perform the following steps to calculate this value.

1. Measure in inches the length of your printer paper's page.
2. Decide how many lines of type per inch you want (most printers let you choose 6 or 8)
3. Multiply the length of the paper times the lines per inch to determine the value for the *Page length* field.

Calculating the *Overflow Line Number Value*

The *Overflow line number* field specifies where the printer should break to the next page, expressed as a number of printed lines.

For example, if you type 62 in this field, the printer prints 62 lines on the page and then skips the rest of the page and prints the next line at the top of the next page. If your page has the typical 66 lines per page, this makes a margin of four blank lines at the bottom of each page.

Perform the following steps to calculate this value.

1. Measure in inches from the top of the page to where you want the last printed line.

2. Multiply this number by the number of lines per inch to determine the *Overflow line number* field value.

Calculating the *Page Width* Value

The *Page width* field specifies how many characters are to be printed on a single line.

Perform the following steps to calculate this value.

1. Measure in inches the width of your printer paper.
2. Determine how many characters the printer prints per inch (that is, the print pitch).

An easy way to do this is to find output from your printer with the spacing you want, and then measure a sample piece of its text to see how many characters per inch that output has. **Note:** Printers vary in the number of cpi (characters per inch) settings they allow you.

3. Multiply the paper's width in inches by the number of characters printed per inch to calculate the *Page width* value.

In standard printing, the most typical values are 80 for narrow (8.5"x11") paper, and 132 for wide (computer) paper.

Creating a Printer Control

Identifying Your Infinium Query Versions

Printer controls are system and version specific. Therefore, you need to create a separate printer control record for each version of Infinium Query that you have defined at your site.

Repeat the following procedure for each printer control for the system version of Infinium Query. Then repeat the procedure for each printer control for each additional version of Infinium Query at your site.

Processing the Infinium Application Manager Printer Controls Screen

1. Sign on as **AM2000**.
2. At the Infinium Application Manager main menu select *Printer Controls*.

The system displays the Printer Controls screen.

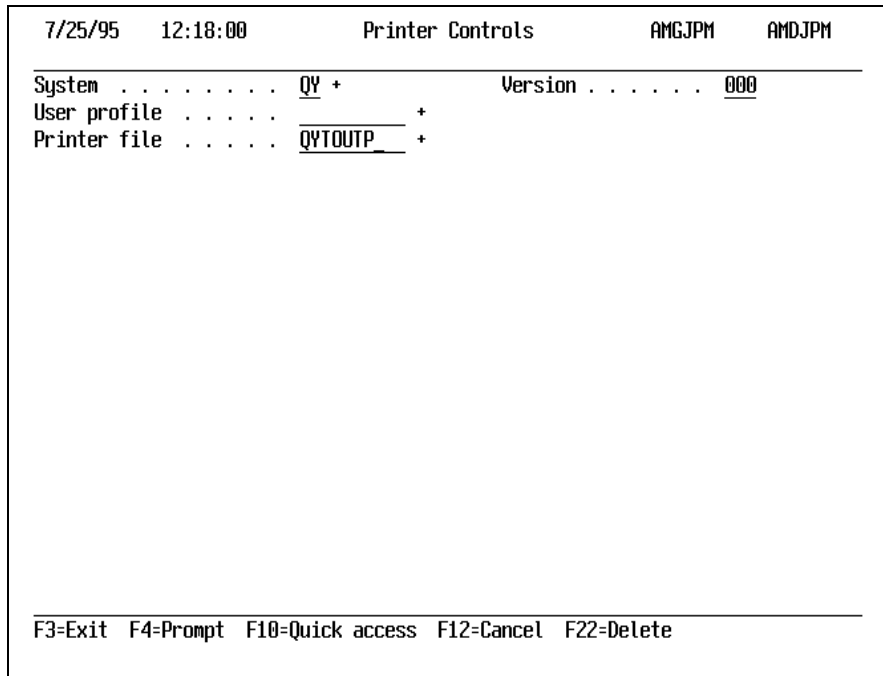


Figure 4-1: Infinium Application Manager Printer Controls screen

- Use the following information to complete the fields on this screen.

Caution: If you press **F3** without typing a *User profile* or *Printer file* field value and save at the Exit Options window, the system creates a “blank” printer control. Therefore, always press **F12** rather than **F3** if you decide to cancel the printer controls definition process. Refer to the warning on the next page for more information.

System

System for which you are creating this control. Always **QY**.

Version

Version of Infinium Query for which you are creating the control.

User profile

User ID of the user for whom this printer control is set up. Leave blank unless you are customizing a control to be used by only the specified user.

Caution: Typing a user profile identification in the *User profile* field creates a printer control record that is valid for that user profile only. Therefore, leave this field blank in order to create a printer

control record that is generic and shared by all users, unless you have a specific business need for a user-specific control.

Note: You can type the *System* and *Version* values or you can press **F4** at the *System* field to display a list of systems and versions, and select the appropriate system and version from the System Versions list.

Refer to the next table for details about the *Printer file* field.

Printer file

The name of the printer control you are setting up or editing.

Required for Infinium Query and Infinium Query/X:

QYOUTP for standard reports

QYTLABEL for labels

Common optional controls for Infinium Query and Infinium Query/X:

QYTRPRPT

for overriding the default printer parameters that control a Directory report

QYTRPTDTL

for overriding the default printer parameters that control the Report Detail Report

You can also assign any unique name to create a new printer control. For example, you can use the name of a special report as the printer control name when setting up special custom printing parameters for that report.



WARNING

Always type a printer file (printer control) name in the *Printer file* field. Never leave this field blank. If you specify **QY** as the system and leave the *Printer file* field blank, all reports, including labels, are printed using the values you specify in this blank printer control. That is, this printer control with the blank *Printer file* value overrides all other printer controls for Infinium Query reports, whether or not it applies to those reports.

This can cause particular problems with label printing, since label reports require radically different page length and width specifications than other outputs. For example, the typical label format “page” is six lines long and a maximum of 60 characters wide.

4. When done typing values at the Printer Controls screen, press **Enter** to continue to the IBM Override with Printer File screen.

Processing IBM Override with Printer File Screen Page 1

```

                                Override with Printer File (OVRPRTF)

Type choices, press Enter.

File being overridden . . . . . FILE          > QYTOUTP
Overriding to printer file . . . . . TOFILE    *FILE
Library . . . . .                               _____
Device:
Printer . . . . .                               _____
Printer device type . . . . . DEVTYPE         > *SCS
Page size:
Page length . . . . .                          > 66
Page width . . . . .                          > 132
Measurement method . . . . .                 *ROWCOL
Lines per inch . . . . . LPI                 > 6
Characters per inch . . . . . CPI           > 10
Front margin:
Offset down . . . . .                          _____
Offset across . . . . .                       _____

More...

F3=Exit  F4=Prompt  F5=Refresh  F10=Additional parameters  F12=Cancel
F13=How to use this display  F24=More keys

```

Figure 4-2: IBM Override with Printer File (OVRPRTF) screen page 1

Use the information in the following table for values in the key fields. You can accept the default values for other fields at this screen.

Note: You can press **F11** from any OVRPRTF screen to view the choices available for selection for a particular field.

File being overridden

Name of the printer control you specified on the Printer Controls screen.

Page size: Page length

Form length: The maximum number of lines to be printed on a single page. This is the length of the form in inches times the number of lines per inch.

Example: If your form length is the standard 11 inches and you plan to print a standard six lines per inch, your page length is 66 (11x6=66).

Note: For the QYTLABEL printer control, type the number of lines in one label. The printer control interprets each label as a separate page.

Page size:
Page width

Form width: The maximum number of characters in a line of type. This is the width of the form in inches times the number of characters per inch.

Example: If you have standard 14" wide computer paper and will be printing 10 characters per inch, the page width is 140.

The most commonly used setting in this case, however, is 132 characters, allowing you to start the printing after a blank left margin and stop the printing before the edge of the paper, to leave a blank right margin.

Note: For QYTLABEL, the printer control for labels, ensure that the form width is set to no more than 60. Infinium Query prints label fields in a single column, and the maximum width of a single label is 60.

Lines per inch

Vertical pitch: The number of lines to be printed per inch.

The most commonly used setting is 6, with 8 often used to include more information on a single page. Other settings are available.

Characters per inch

Horizontal pitch: The number of characters to be printed per inch. The most commonly used settings are 10 and 12.

When done with this page of the Override with Printer File screen, press **PgDn** to continue to the next page of the screen.

Caution: Do not press **Enter** until done with all the pages of the Override with Printer File screen for which you need to type values. If you press **Enter** rather than **PgDn**, the system returns you to the Printer Controls screen with additional fields displayed as indicated later in this section.

Processing IBM Override with Printer File Screen Page 2

Override with Printer File (OVRPRTF)			
Type choices, press Enter.			
Back margin:	BACKMGN		
Offset down			_____
Offset across			_____
Overflow line number	OVRFLW	> 60	_____
Fold records	FOLD		_____
Unprintable character action:	RPLUNPRT		
Replace character			_____
Replacement character			_____
Align page	ALIGN		_____
Source drawer	DRAWER		_____
Font:	FONT		
Identifier			_____
Point size			*NONE
Form feed	FORMFEED		_____
Print quality	PRTQLTY	> *STD	_____
Control character	CTLCHAR		_____
			More...
F3=Exit	F4=Prompt	F5=Refresh	F10=Additional parameters
F13=How to use this display		F24=More keys	F12=Cancel

Figure 4-3: IBM Override with Printer File screen page 2

Use the following information to edit the key field on this screen. You can accept the defaults in the other fields or edit values if applicable.

Overflow line number

Form length: The number of lines to be printed on each page (including blank lines) before the system breaks to the next page.
Example: An 11" long form with six lines per inch has form length **66**.

Type **66** in the Overflow line number field if you want to print all the way to the bottom of the page.

Type **60** in the Overflow line number field if you want to leave an inch blank margin at the bottom of the page.

Press **PgDn** to continue to the next page of the screen.

Caution: Do not press **Enter** until done with all the pages of the Override with Printer File screen for which you need to type values. If you press **Enter** rather than **PgDn**, the system returns you to the Printer Controls screen with additional fields displayed as indicated later in this section.

Processing IBM Override with Printer File Screen Page 3

```

                                Override with Printer File (OVRPRTF)

Type choices, press Enter.

Channel values:                CHLVAL      -
Channel . . . . .                _____
Line number for channel:
Line . . . . .                _____
                                + for more values
Fidelity . . . . .              FIDELITY  -
Character identifier:          CHRID       _____
Graphic character set . . . . .
Code page . . . . .            _____
Font character set:           FNTCHRSET   _____
Character set . . . . .
Library . . . . .                *LIBL    _____
Code page . . . . .            _____
Library . . . . .                *LIBL    _____
Coded font . . . . .           CDEFNT     _____
Library . . . . .                *LIBL    _____

                                More...

F3=Exit  F4=Prompt  F5=Refresh  F10=Additional parameters  F12=Cancel
F13=How to use this display  F24=More keys
```

Figure 4-4: IBM Override with Printer File screen page 3

You can accept the defaults at this screen or edit values if applicable.

When done with this page of the Override with Printer File screen, press **PgDn** to continue to the next page of the screen.

Caution: Do not press **Enter** until done with all the pages of the Override with Printer File screen for which you need to type values. If you press **Enter** rather than **PgDn**, the system returns you to the Printer Controls screen with additional fields displayed as indicated later in this section.

Processing IBM Override with Printer File Screen Page 4

```

                                Override with Printer File (OVRPRTF)

Type choices, press Enter.

Degree of page rotation . . . . . PAGRTT      _____
Pages per side . . . . . MULTIUP             _____
Print text . . . . . PRTTXT                  _____

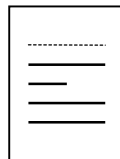
Hardware justification . . . . . JUSTIFY      _____
Print on both sides . . . . . DUPLEX          _____
Unit of measure . . . . . UOM                _____
Front side overlay:
  Overlay . . . . . FRONTOVL                 _____
  Library . . . . . *LIBL                    _____
  Offset down . . . . . 0                    _____
  Offset across . . . . . 0                  _____

                                                                More...
F3=Exit  F4=Prompt  F5=Refresh  F10=Additional parameters  F12=Cancel
F13=How to use this display      F24=More keys
    
```

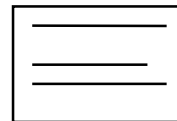
Figure 4-5: IBM Override with Printer File screen page 4

Use the following information to edit the key field on this screen. You can accept the defaults in the other fields or edit values if applicable.

Page rotation refers to whether a report page is to be printed in standard portrait orientation or sideways landscape orientation.



Portrait Orientation



Landscape Orientation

The table below provides details about using the *Degree of page rotation* field to control the orientation of the report output.

Type one of the following values in the *Degree of page rotation* field to control the orientation of the report output.

Value	Meaning
*DEV D	<p>Type *DEV D (Device Description) to use whichever orientation, portrait or landscape, is currently set in the printer itself at the time the output is submitted to the printer.</p> <p>For line printers, always type *DEV D. Line printers are typically set for landscape orientation. Ink-jet and Laser printers can be configured for either portrait or landscape orientation.</p>
*COR	<p>Type *COR (Computer Output Reduction) to print wide 13.2" or 14" x 11" computer form outputs on 8.5" x 11 paper at a standard IBM 3812 laser printer or any other printer set up to emulate the IBM 3812.</p> <p>If you type *COR, the system does the following:</p> <ul style="list-style-type: none"> Rotates the output image 90 degrees Compresses the font pitch to fit more text in a smaller space <ul style="list-style-type: none"> 10 pitch (10 characters to the inch) becomes 13 pitch 12 pitch becomes 15 pitch 15 pitch becomes 20 pitch Note for comparison that 10 and 12 pitch are common typewriter output pitches. Compresses the vertical spacing 70% of its normal length Adds 1/2 inch margins to the top and left side of the output <p>Note: The 3812 printer does not perform rotation if the file contains graphics, barcodes, variable lines per inch, variable fonts, variable page orientations, or variable printer drawer specifications.</p>
0, 90 180, 270	<p>The number of degrees to rotate output. 0 means no rotation; the output keeps its default orientation. If you type 180, the output image is rotated exactly upside down.</p>

When done with this page of the Override with Printer File screen, press **[PgDn]** to continue to the next page of the screen.

Caution: Do not press **[Enter]** until done with all the pages of the Override with Printer File screen for which you need to type values. If you press **[Enter]** rather than **[PgDn]**, the system returns you to the Printer Controls screen with additional fields displayed as indicated later in this section.

Processing IBM Override with Printer File Screen Page 5

Override with Printer File (OVRPRTF)			
Type choices, press Enter.			
Back side overlay:	BACKOVL		
Overlay			
Library		*LIBL	
Offset down		0	
Offset across		0	
Defer write	DFRWRT		
Spool the data	SPOOL		
Output queue	OUTQ	> QPRINT	
Library		*LIBL	
Form type	FORMTYPE	> *QVTOUTP	
Copies	COPIES	> 1	
Page range to print:	PAGERANGE		
Starting page			
Ending page			
Max spooled output records . . .	MAXRCDS	> 20000	
File separators	FILESEP	> 0	
			More...
F3=Exit	F4=Prompt	F5=Refresh	F10=Additional parameters
F13=How to use this display		F24=More keys	F12=Cancel

Figure 4-6: IBM Override with Printer File screen page 5

Use the following information to process the key field on this screen. You can accept the defaults in the other fields or edit the values if applicable.

Output queue

Your organization's designation for the printer to which the output is to be sent, such as QPRINT.

When done with this page of the Override with Printer File screen, press **PgDn** to continue to the next page of the screen.

Caution: Do not press **Enter** until done with all the pages of the Override with Printer File screen for which you need to type values. If you press **Enter** rather than **PgDn**, the system returns you to the Printer Controls screen with additional fields displayed as indicated later in this section.

Processing IBM Override with Printer File Screen Page 6

Override with Printer File (OVRPRTF)		
Type choices, press Enter.		
Spooled output schedule	SCHEDULE	> <u>*FILEEND</u>
Hold spooled file	HOLD	> <u>*YES</u>
Save spooled file	SAVE	> <u>*NO</u>
Output priority (on OUTQ)	OUTPTY	_____
User data	USRDTA	_____
Spool file name	SPLFNAME	_____
Maximum file wait time	WAITFILE	_____
Record format level check	LVLCHK	_____
Secure from other overrides	SECURE	<u>*NO</u>
Override scope	OVRSCOPE	<u>*CALLLVL</u>
Share open data path	SHARE	_____
Open scope	OPNSCOPE	_____
Bottom		
F3=Exit	F4=Prompt	F5=Refresh
F13=How to use this display	F10=Additional parameters	F12=Cancel
	F24=More keys	

Figure 4-7: IBM Override with Printer File screen page 6

Use the following information to process the key field on this screen. You can accept the defaults for other fields, or edit if applicable.

Spooled output schedule

Specification of when a file is to be available for printing during report generation. Choose from the following values:

- | | |
|-----------------|---|
| *IMMED | Queue each line for printing as it is generated |
| *FILEEND | Queue the report for printing when it is complete |

Note: Avoid using ***JOBEND**, even when it is the default. This value puts the Infinium Query report's file into a closed state, unavailable for printing until the Infinium Query user signs completely off the AS/400.

When done with this page of the Override with Printer File screen, do one of the following:

- Press **F10** to display the optional Additional Parameters screens and continue to the next topic (you do not usually need these screens)
- Press **Enter** to return to the Printer Controls screen with additional fields displayed and skip directly to the Processing the Re-Displayed Printer Controls Screen topic

Processing IBM Override with Printer File Screen Additional Pages

```

Override with Printer File (OVRPRTF)

Type choices, press Enter.

Spooled output schedule . . . . SCHEDULE      _____
Hold spooled file . . . . . HOLD             _____
Save spooled file . . . . . SAVE             _____
Output priority (on OUTQ) . . . . . OUTPTY    _____
User data . . . . . USRDTA                  _____
Spool file name . . . . . SPLFNAME           _____
Maximum file wait time . . . . . WAITFILE    _____
Record format level check . . . . . LVLCHK   _____
Secure from other overrides . . . . . SECURE  *NO
Override scope . . . . . OVRSCOPE           *CALLLVL
Share open data path . . . . . SHARE         _____
Open scope . . . . . OPNSCOPE               _____

Additional Parameters

User specified DBCS data . . . . . IGCDDTA   _____

F3=Exit  F4=Prompt  F5=Refresh  F12=Cancel  F13=How to use this display
F24=More keys
More...

```

Figure 4-8: Override with Printer File Additional Parameters page 1

Edit fields if applicable. Press **[PgDn]** to display the second Additional Parameters screen, or **[Enter]** to return to the Printer Controls screen.

```

Override with Printer File (OVRPRTF)

Type choices, press Enter.

DBCS extension characters . . . . . IGCEXNCHR  _____
DBCS character rotation . . . . . IGCCRRTT    _____
DBCS characters per inch . . . . . IGCCPI     _____
DBCS SO/SI spacing . . . . . IGCSOSI       _____
DBCS coded font . . . . . IGCCDEFNT         _____
Library . . . . . *LIBL

F3=Exit  F4=Prompt  F5=Refresh  F12=Cancel  F13=How to use this display
F24=More keys
Bottom

```

Figure 4-9: Override with Printer File Additional Parameters page 2

Edit fields if applicable. Press to return to the re-displayed Printer Controls screen. Continue to the next topic.

Processing the Re-Displayed Printer Controls Screen

7/25/95	12:27:59	Printer Controls	AMGJPM	AMDJPM
<hr/>				
System	QY	Version	000	
User profile				
Printer file	QYTOUTP			
Archive life	999	1-999		
Archive print file	*NO	*YES or *NO		
Format	*PRTCTL	*NONE, *PRTCTL, *S36FMT, *FCFC		
<hr/>				
F3-Exit F10-Quick access F12-Cancel F22-Delete				

Figure 4-10: Printer Controls screen with additional fields

When you return to the Printer Controls screen, the system displays three additional fields that you can use to control archiving of report outputs governed by this printer control.

You can accept the defaults at this screen, or edit the values.

Archive life

The number of days (1 to 999) to save the archived output file

Archive print file

***YES** to archive the output file; ***NO** not to archive the output file

Format

The format in which to archive the output file, such as ***PRTCTL** to archive the file in the format used for printing as specified in this printer control, or ***S36FMT** for System 36 format

When done with this screen, press to exit from the *Printer Controls* function. At the Exit Options panel, type **1** and press to exit saving your changes.

The system returns you to the Infinium Application Manager main menu.

Notes