

Human Resources/Payroll

Setting Up and Using HRUTILITY

Copyright © 2008 by Infinium® Software, Inc. and/or its affiliates.

All rights reserved. The word and design marks set forth herein are trademarks and/or registered trademarks of Infinium Software, Inc. and/or its affiliates. All rights reserved. All other trademarks listed herein are the property of their respective owners.

Important Notices

The material contained in this publication (including any supplementary information) constitutes and contains confidential and proprietary information of Infinium Software, Inc.

By gaining access to the attached, you acknowledge and agree that the material (including any modification, translation or adaptation of the material) and all copyright, trade secrets and all other right, title and interest therein, are the sole property of Infinium Software, Inc. and that you shall not gain right, title or interest in the material (including any modification, translation or adaptation of the material) by virtue of your review thereof other than the non-exclusive right to use the material solely in connection with and the furtherance of your license and use of software made available to your company from Infinium Software, Inc. pursuant to a separate agreement ("Purpose").

In addition, by accessing the enclosed material, you acknowledge and agree that you are required to maintain such material in strict confidence and that your use of such material is limited to the Purpose described above.

Although Infinium Software, Inc. has taken due care to ensure that the material included in this publication is accurate and complete, Infinium Software, Inc. cannot warrant that the information contained in this publication is complete, does not contain typographical or other errors, or will meet your specific requirements. As such, Infinium Software, Inc. does not assume and hereby disclaims all liability, consequential or otherwise, for any loss or damage to any person or entity which is caused by or relates to errors or omissions in this publication (including any supplementary information), whether such errors or omissions result from negligence, accident or any other cause.

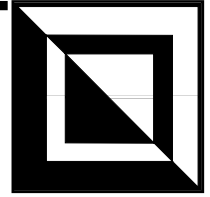
Publication Information

Release: Infinium HCM Release 10.4

Publication Date: June 2008

Document Number: 980612151502-01

Table of Contents



Introduction	1
What Is the Purpose of This Guide?	1
Who Should Read This Guide?.....	1
Flow Diagram	1
Setting Up HRUTILITY	3
Adding HRUTILITY to the Library List	3
Creating the Target Test Database	3
Restoring the Test Database Library	3
Purging the Restored Library	4
Managing Custom Libraries	4
Copying Custom Libraries	4
Recreating the Custom Logical Files	5
Setting Up the Test Version	5
Using HRUTILITY	6
Purging a Test Database.....	6
Copying an Employer to a Test Database.....	7

Introduction

What Is the Purpose of This Guide?

This document explains how to set up and use the database population utility HRUTILITY. This utility enables you to:

- Copy an employer from a Infinium HR/PY production database to a test database
- Purge an entire test database

Who Should Read This Guide?

The person completing these tasks should have technical experience on the AS/400.

Flow Diagram

The following flow diagram summarizes the tasks involved in using HRUTILITY.

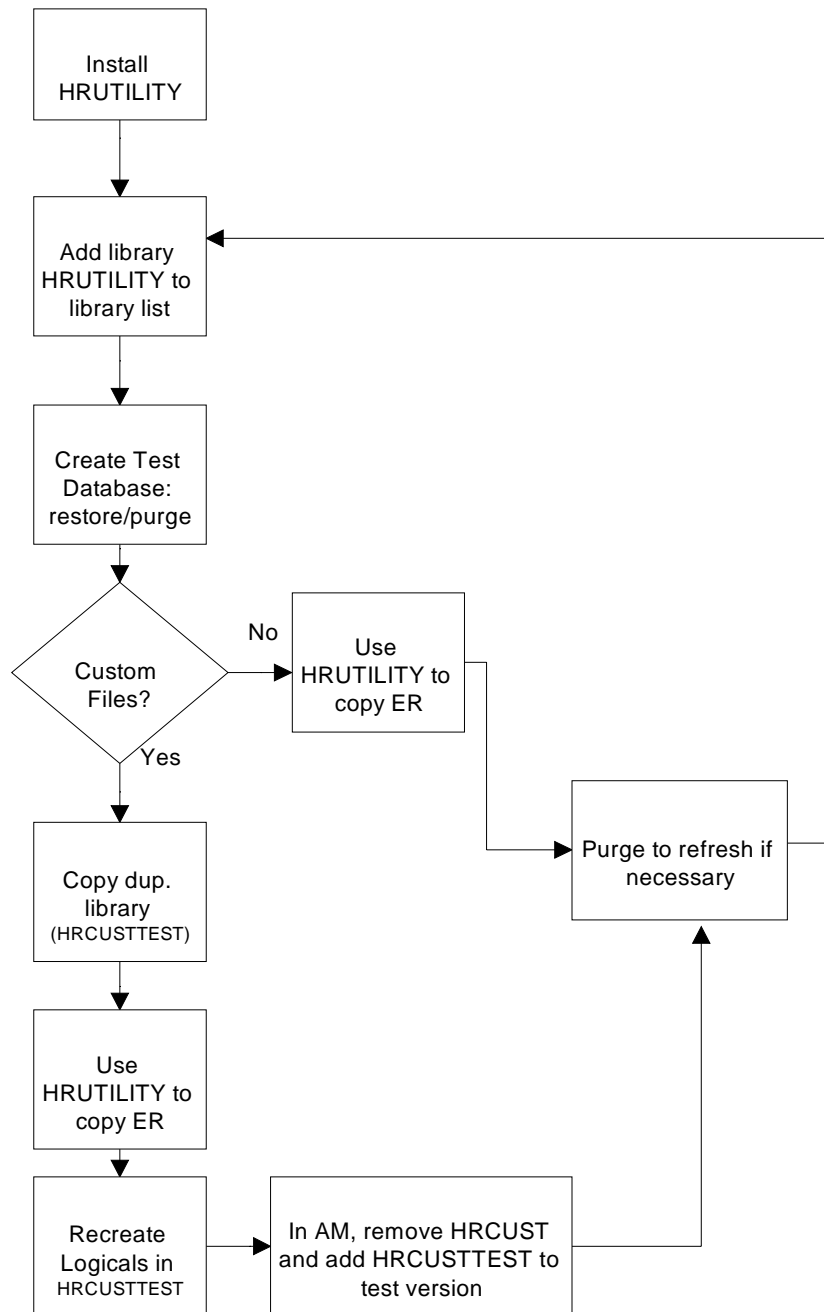


Figure 1: HRUTILITY Workflow

Setting Up HRUTILITY

This section describes the following tasks:

- Adding HRUTILITY to the Library List
- Creating the Target Test Database
- Managing Custom Libraries

Adding HRUTILITY to the Library List

You must add the HRUTILITY library to your library list each time that you want to run the Copy or Purge command.

To add HRUTILITY to your library list, complete these steps:

1. Go to a command line and type this command:

ADDLIBLE HRUTILITY *LAST

2. Press .

Creating the Target Test Database

You must create the target test database into which you will copy the employer. This procedure includes the following tasks:

- Using the Restore Library (RSTLIB) command to restore a recent backup of the current production database and to name the new test database
- Using the Purge Library (PURGELIB) command to remove all data from the restored library

Restoring the Test Database Library

Complete the following steps to restore the test database library:

1. Go to a command line and type the RSTLIB command as shown in the following example:

```
RSTLIB SAVLIB(your current database library; for  
              example, HRDBFA) +  
DEV(Tape_Device_name) +  
VOL(*MOUNTED) +  
ENDOPT(*REWIND) +  
OPTION(*ALL) +  
RSTLIB(your test database library; for example,  
       HRDBFATEST)
```

2. Press .

Purging the Restored Library

Complete the following steps to remove all data from the restored library:

1. Go to a command line and type **PURGELIB**. The system displays a screen that prompts for the name of the test database library.
2. Type the name of the test database library and press .

For more information see the section “Purging a Test Database” in this document.

Managing Custom Libraries

If you have a library with any custom logical and/or physical files, you must complete these additional tasks:

- Make a duplicate copy of each custom library
- Redirect the custom logical files to the test database library
- Set up the test version in Infinium AM by making sure the correct test libraries are in the test version’s library list

If you have custom libraries, proceed to the next task “Copying Custom Libraries.”

If you do not have custom libraries, proceed to the task “Copying an Employer to a Test Database” on page 7.

Copying Custom Libraries

If you have any custom logical and/or physical files in a custom library, you must make a duplicate copy of this library. This duplicate library (for example, HRCUSTTEST) will be used with the test database library

that you create with HRUTILITY. After you use the HRUTILITY to copy an employer, you must complete additional steps. (See the sections “Redirecting the Custom Logical Files” and “Setting Up the Test Version.”)

Note: If you create the duplicate database library with no data in the custom physical files, you must populate the custom files.

Recreating the Custom Logical Files

If you made a duplicate copy of a custom library, you must recreate any logical files in the duplicate library over your test database library.

Setting Up the Test Version

In Infinium AM you must make sure that the test version’s library list contains the correct libraries.

Refer to the *Infinium Application Manager Quick Reference User’s Guide* for information on setting up a version.

<p>Caution: The original production custom library should never be in the test version if any logical files or physical files exist in the custom library. Use the duplicate copy of the custom library instead.</p>

Using HRUTILITY

This section describes the following tasks:

- Purging a Test Database
- Copying an Employer to a Test Database

Purging a Test Database

The Purge command enables you to refresh or purge the database library. After the purge job completes normally, you can then re-copy the employer(s) from the production database to the test database.

A completed purge removes all data from all files except any QueryCalc files added to your test database. (Do not confuse QueryCalc with Infinium QY.)

Complete the following steps to purge the test database library:

1. Go to a command line, type **ADDLIBLE HRUTILITY *LAST**, and press .
2. From a command line, type **PURGELIB** and press .

The system displays a screen like the following.

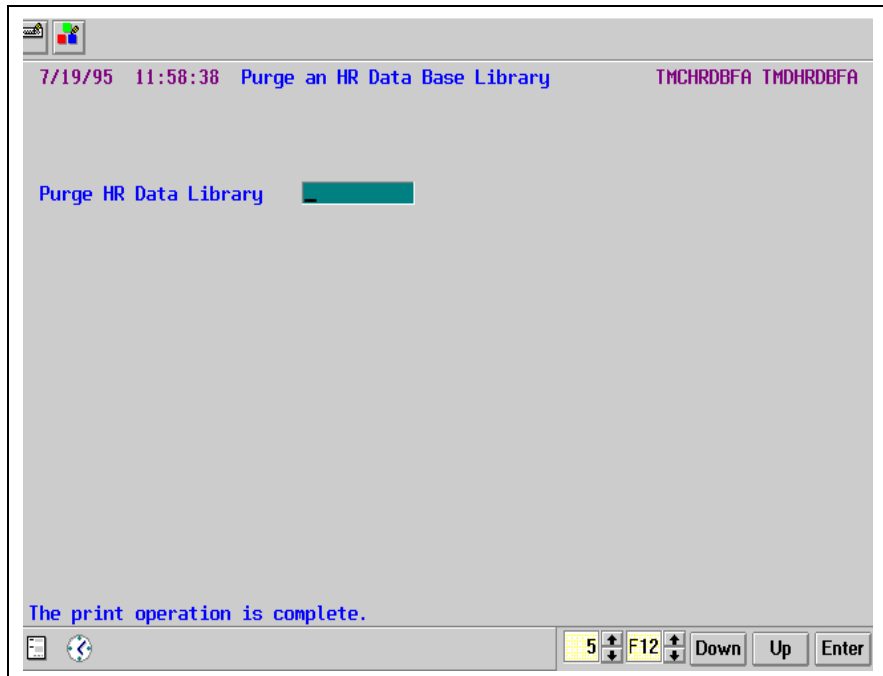


Figure 2: Purge an HR Database Library screen

3. Type the name of the test database library and press .

If the purge job completes normally, you can re-copy an employer by using the **COPYHRER** command. For details see the next section “Copying an Employer to a Test Database.”

Copying an Employer to a Test Database

Complete the steps below to copy an employer from one database to the test database. You must complete these steps for each employer that you want to copy.

1. Go to a command line, type **ADDLIBLE HRUTILITY *LAST**, and press .
2. From a command line, type **COPYHRER** and press .

The system displays a screen like the following.

The system displays the name of your new test database library here.

7/19/95 12:03:14 Copy An Employer to another Data Base CHCPAHR CHDPAHR

From Employer

From Data Library . . HRDBFA

To Data Library . . . HRDBFANEW

System (HR) HR

From HR GL Company .

Copy Tax&Codes Tables Y Y=Yes,N=No

F3=Exit
The print operation is complete.

5 F12 Down Up Enter

Figure 3: Copy an Employer to Another Database screen

- Complete the fields as follows:

From Employer

Type the name of the Employer and press **FieldExit**.

From Data Library

Type the database library name, such as HRDBFA.

To Data Library

Type the target database library name, such as HRDBFATEST.

System

This value is the system designator HR.

From HR GL Company

Type the employer's HR GL Company.

Copy Tax&Codes Tables

Type **Y** if you want to copy tax table, code tables, QXTSRC, QBENSCR, and Infinium QY control files. Otherwise, type **N**.

Note: You must type **Y** if this is the first employer you are copying. For subsequent employers, you do not have to copy the table unless you want to refresh these files.

- Press **Enter** to submit the job, which is put on hold to batch.

Release the job to copy the employer. You should release only one job at a time.

5. Check your job log to verify that the files were copied.

Proceed to the Infinium AM test version to add all the correct test libraries.

Notes