



Infor CloudSuite Industrial APS Planning Algorithm Flow Diagram

Copyright © 2015 Infor

Important Notices

The material contained in this publication (including any supplementary information) constitutes and contains confidential and proprietary information of Infor.

By gaining access to the attached, you acknowledge and agree that the material (including any modification, translation or adaptation of the material) and all copyright, trade secrets and all other right, title and interest therein, are the sole property of Infor and that you shall not gain right, title or interest in the material (including any modification, translation or adaptation of the material) by virtue of your review thereof other than the non-exclusive right to use the material solely in connection with and the furtherance of your license and use of software made available to your company from Infor pursuant to a separate agreement, the terms of which separate agreement shall govern your use of this material and all supplemental related materials ("Purpose").

In addition, by accessing the enclosed material, you acknowledge and agree that you are required to maintain such material in strict confidence and that your use of such material is limited to the Purpose described above. Although Infor has taken due care to ensure that the material included in this publication is accurate and complete, Infor cannot warrant that the information contained in this publication is complete, does not contain typographical or other errors, or will meet your specific requirements. As such, Infor does not assume and hereby disclaims all liability, consequential or otherwise, for any loss or damage to any person or entity which is caused by or relates to errors or omissions in this publication (including any supplementary information), whether such errors or omissions result from negligence, accident or any other cause.

Without limitation, U.S. export control laws and other applicable export and import laws govern your use of this material and you will neither export or re-export, directly or indirectly, this material nor any related materials or supplemental information in violation of such laws, or use such materials for any purpose prohibited by such laws.

Trademark Acknowledgements

The word and design marks set forth herein are trademarks and/or registered trademarks of Infor and/or related affiliates and subsidiaries. All rights reserved. All other company, product, trade or service names referenced may be registered trademarks or trademarks of their respective owners.

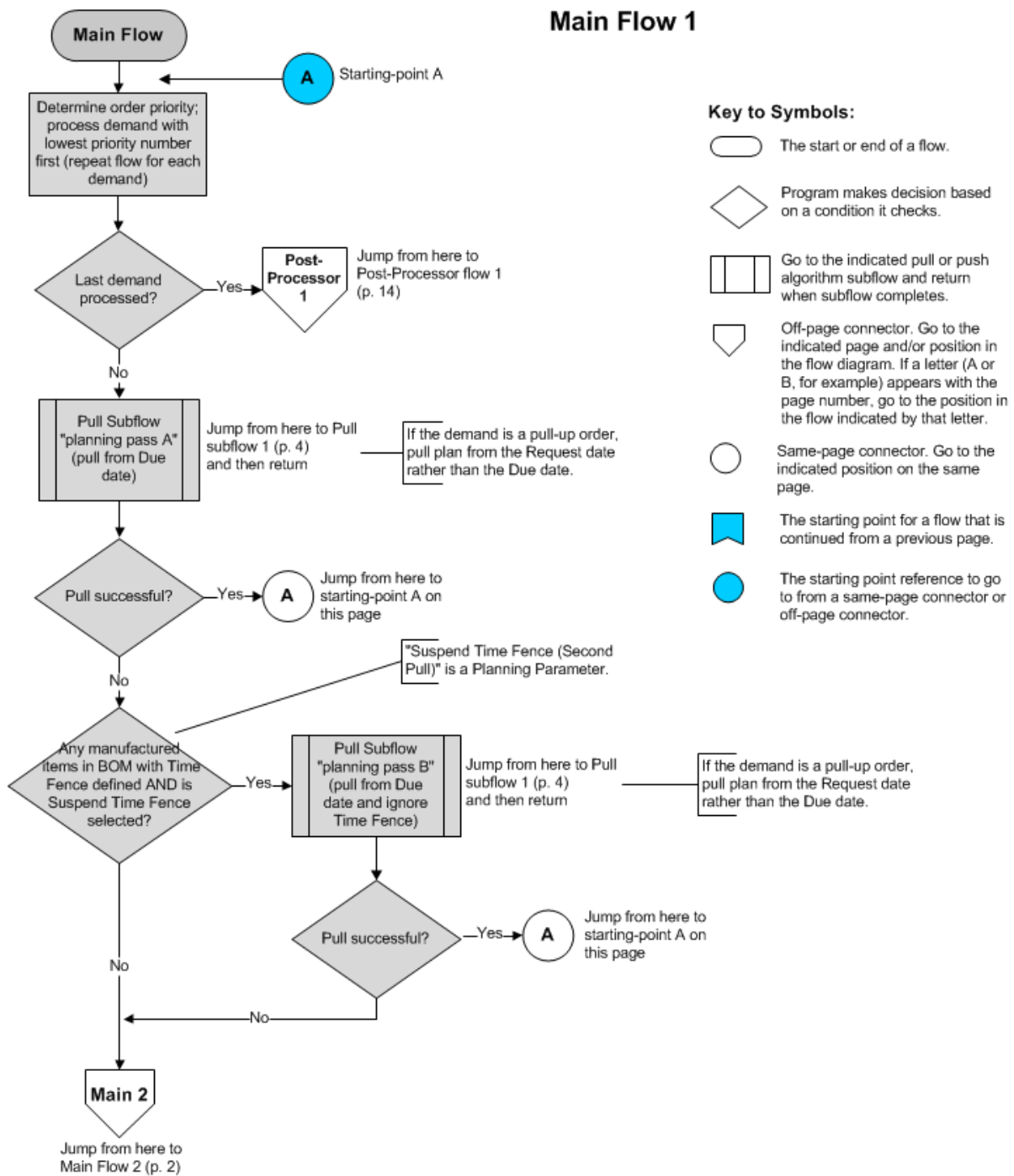
Publication Information

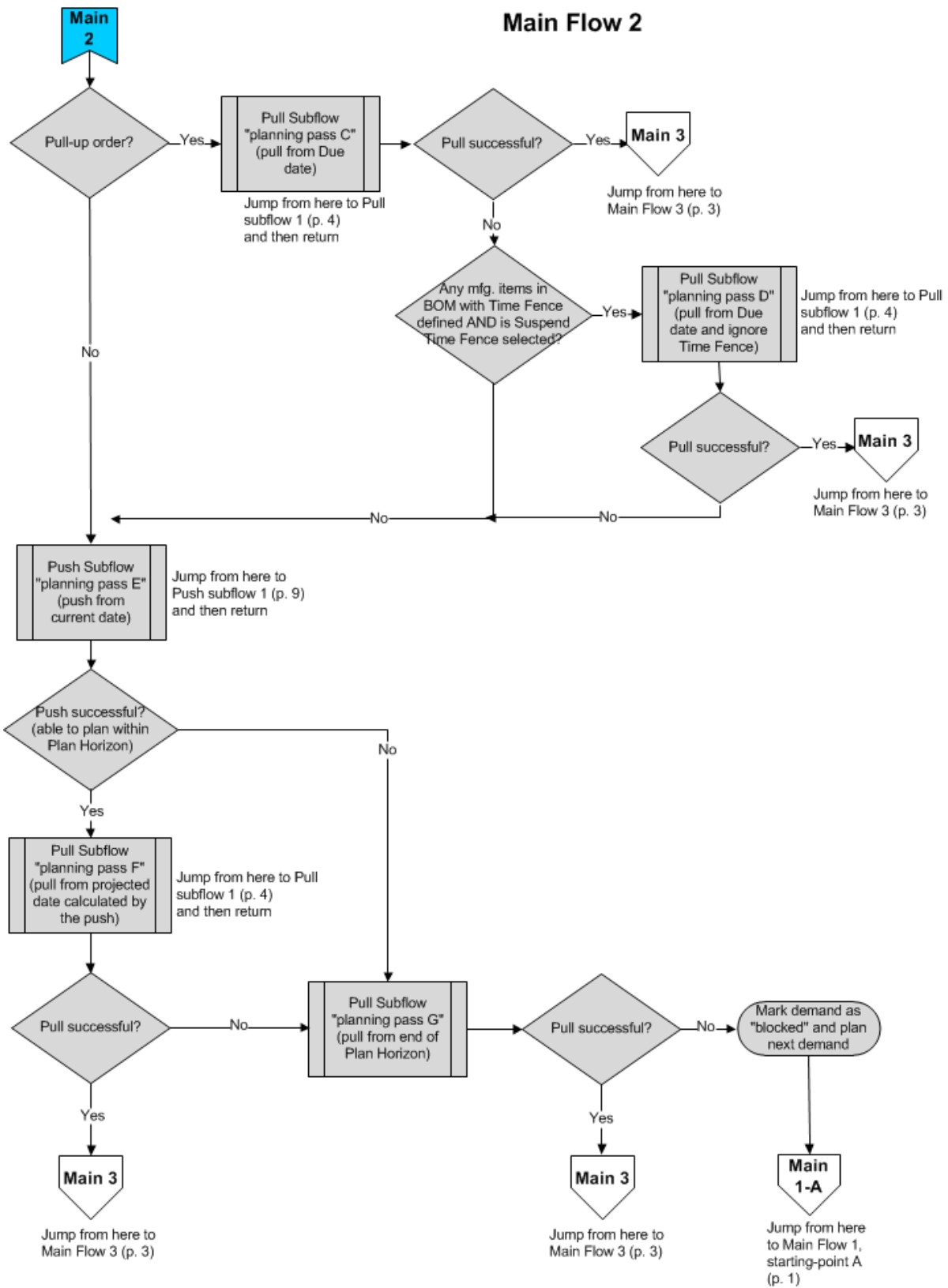
Release: Infor CloudSuite Industrial 9.00.x

Publication date: October 30, 2015

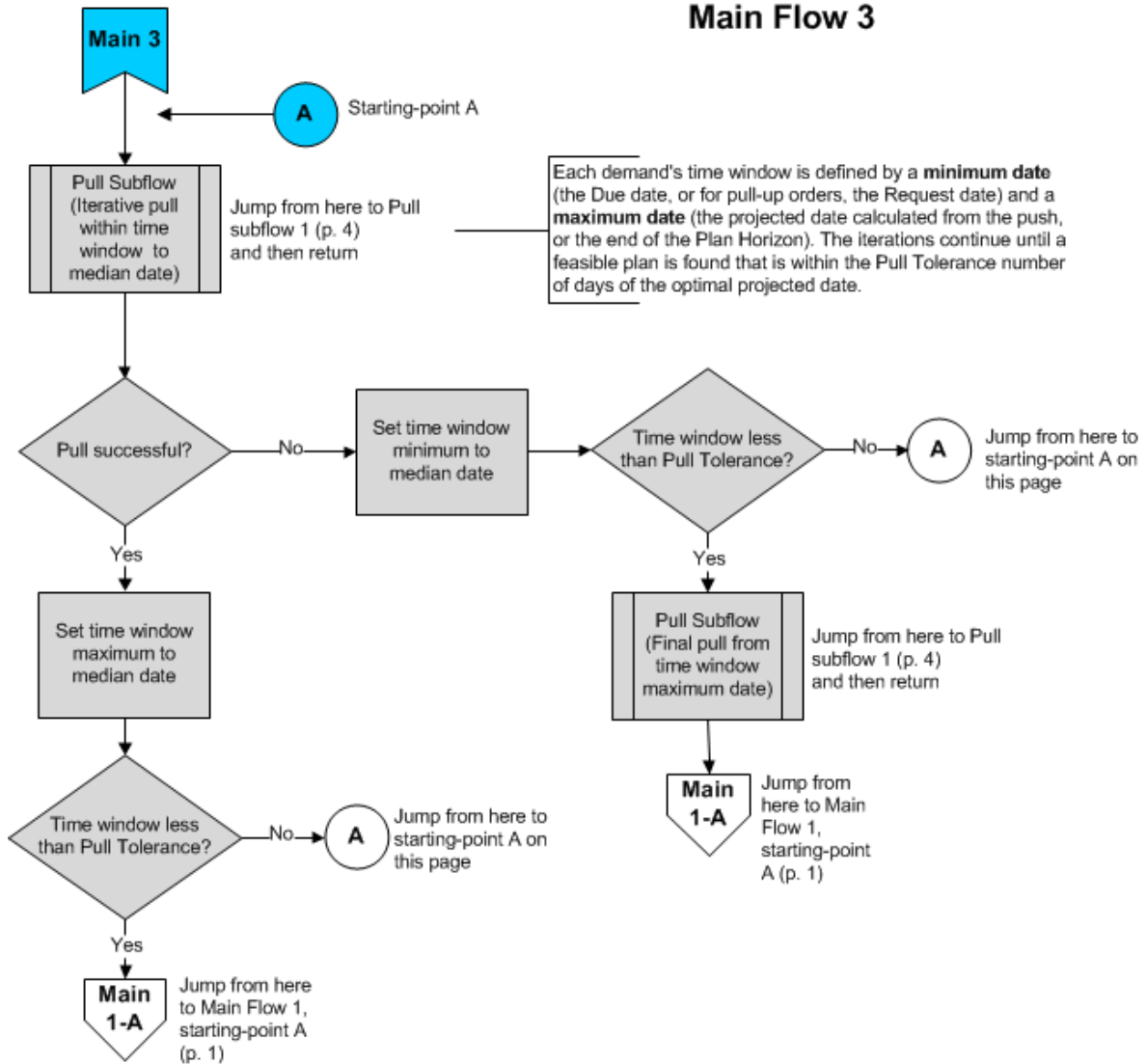
APS Planning Algorithm Flow Diagram

This flow diagram shows how the APS planning algorithm plans demands. It shows the basic planning flow but does not include all aspects. For example, safety stock logic is not included. The diagram illustrates only the planning functions that occur in the planning engine and does not include post-processing (for example, SQL stored procedures) that occurs after the planning engine completes. See online help descriptions of planning parameters mentioned here.

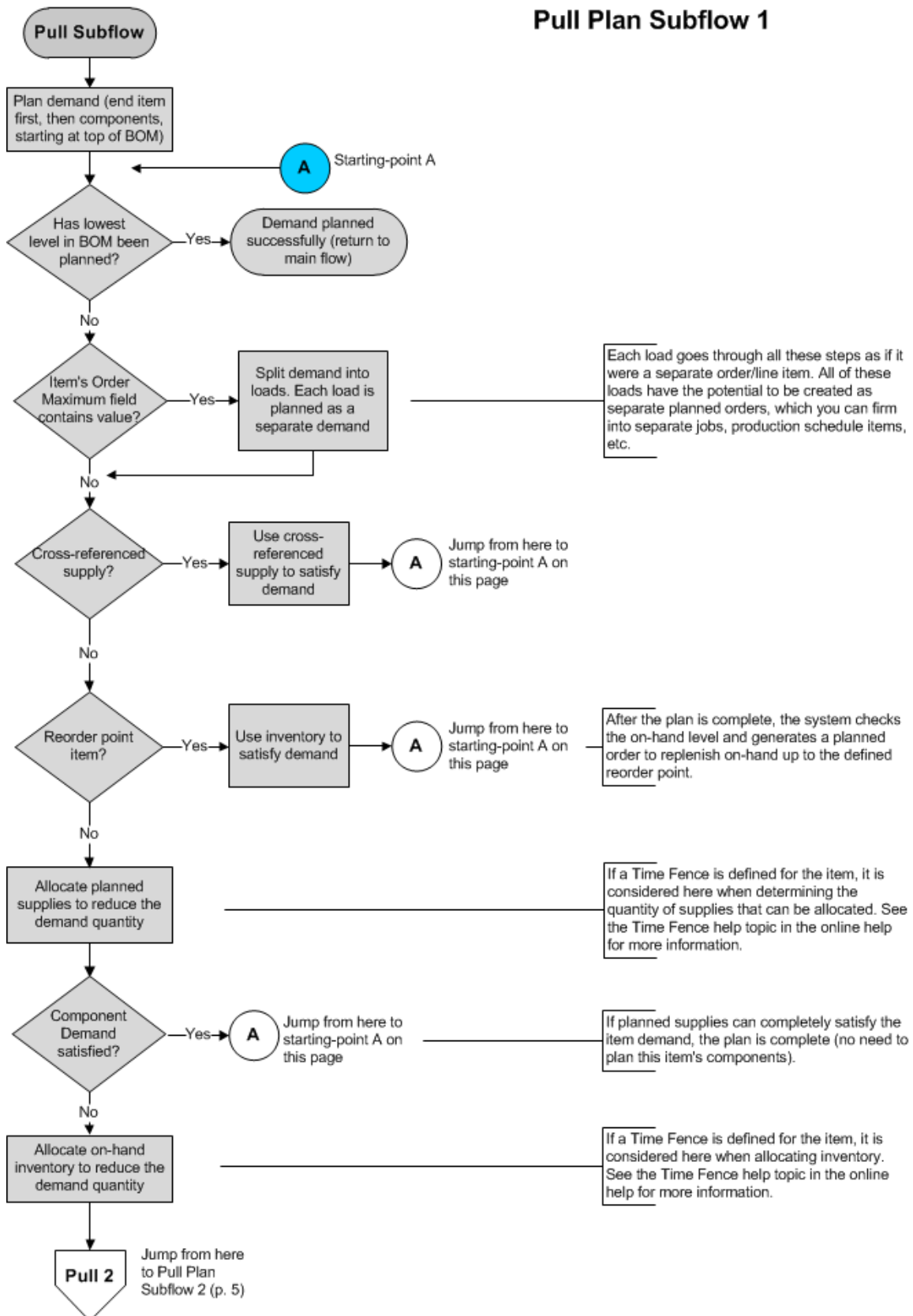




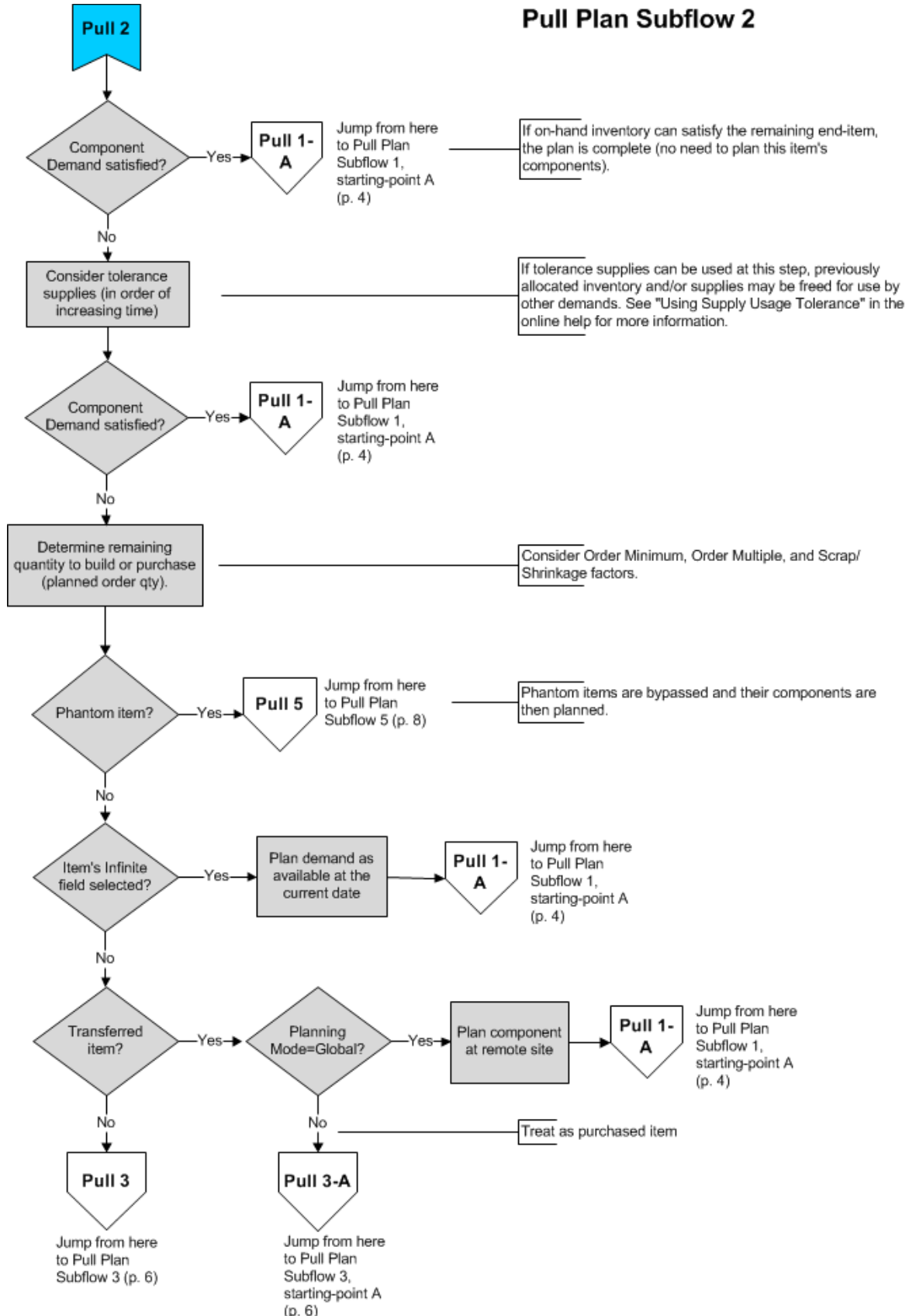
Main Flow 3

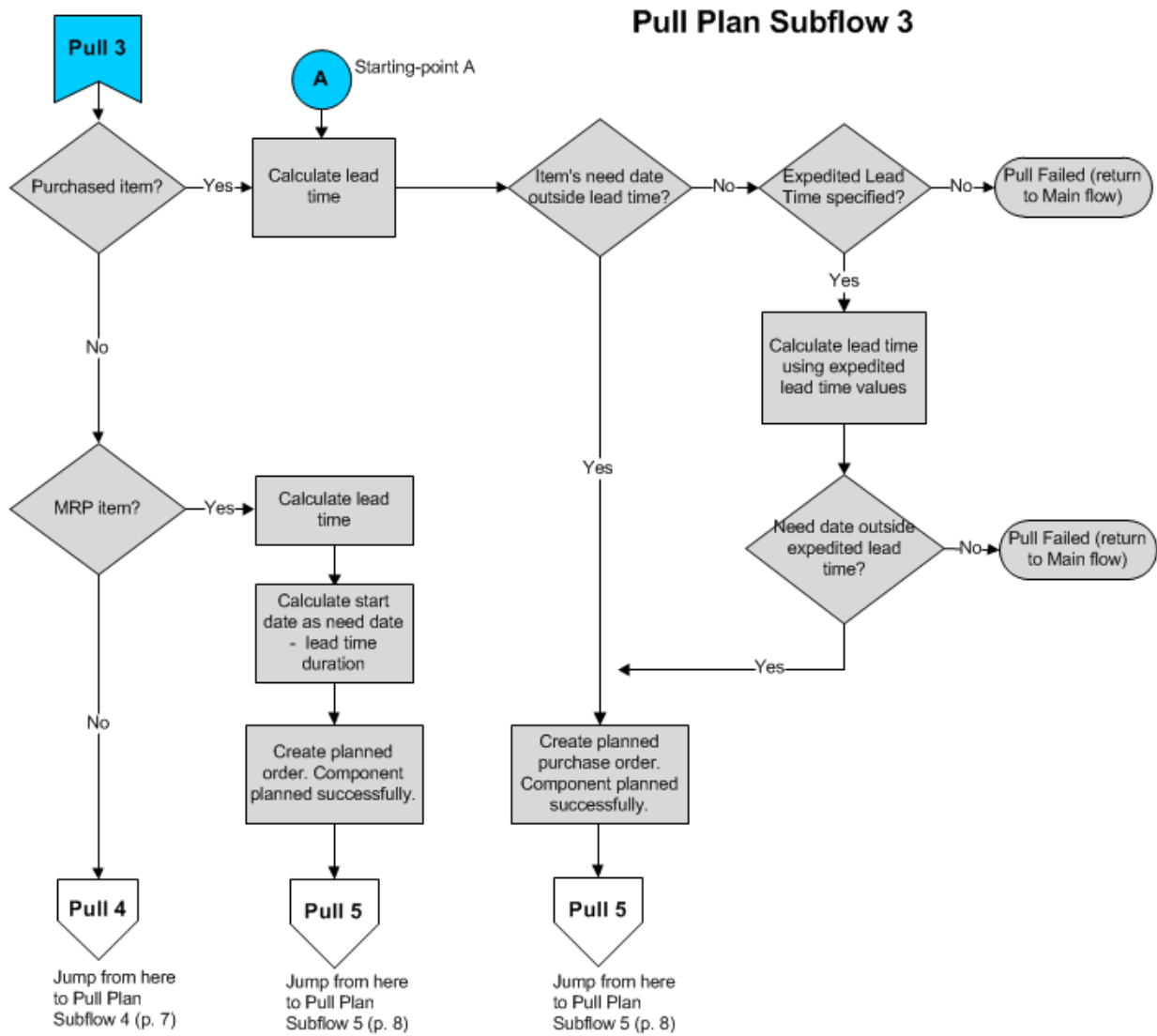


Pull Plan Subflow 1

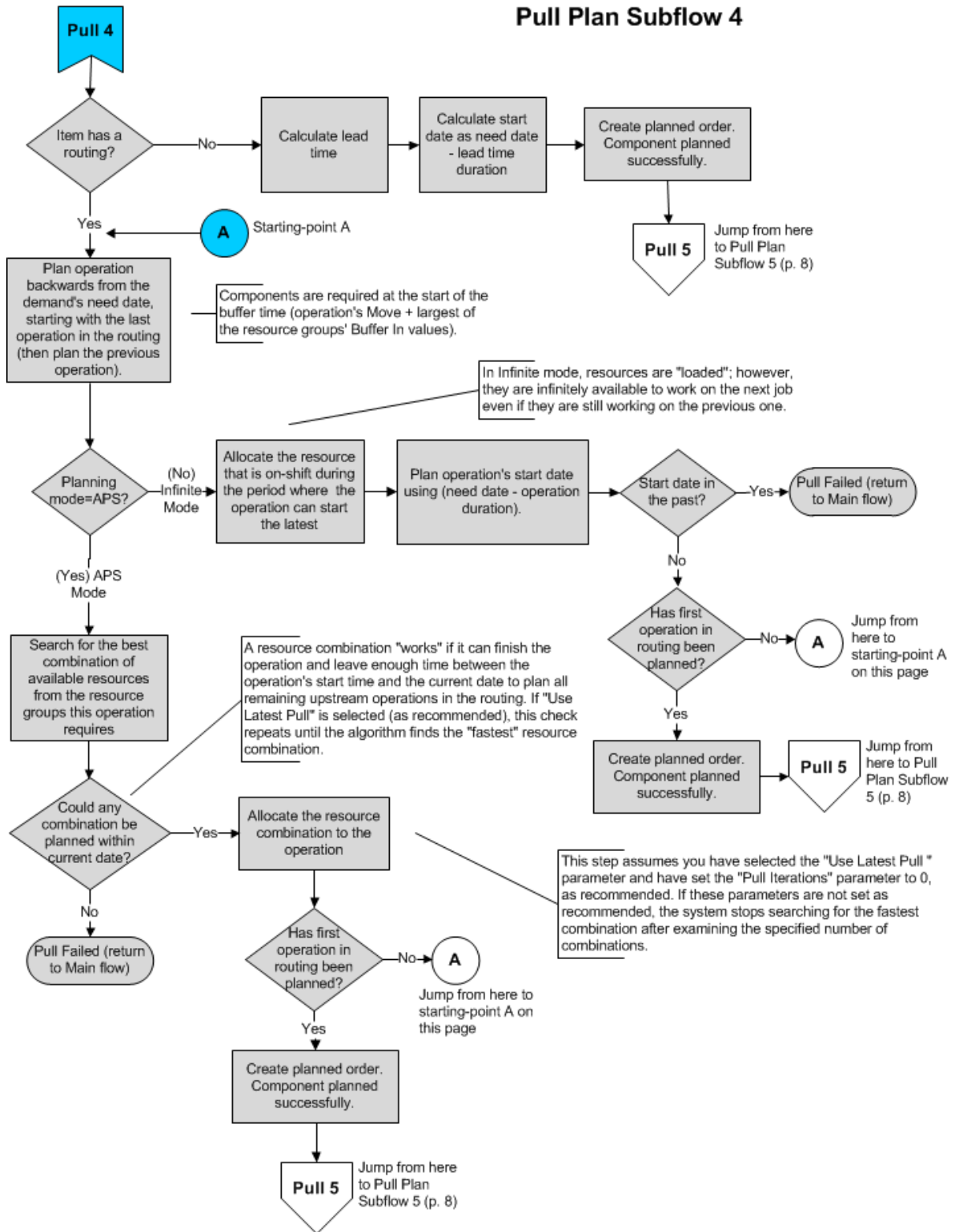


Pull Plan Subflow 2

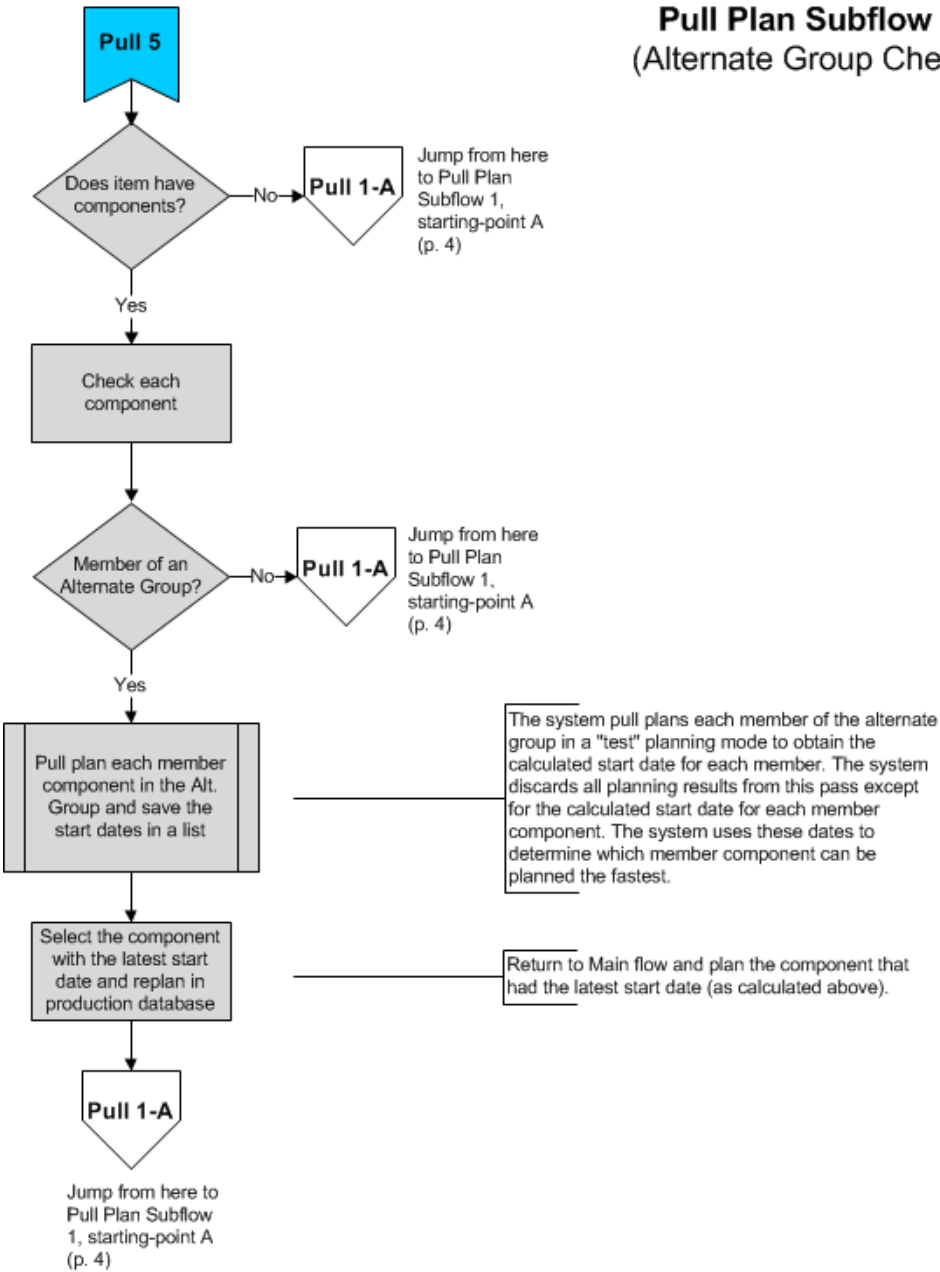




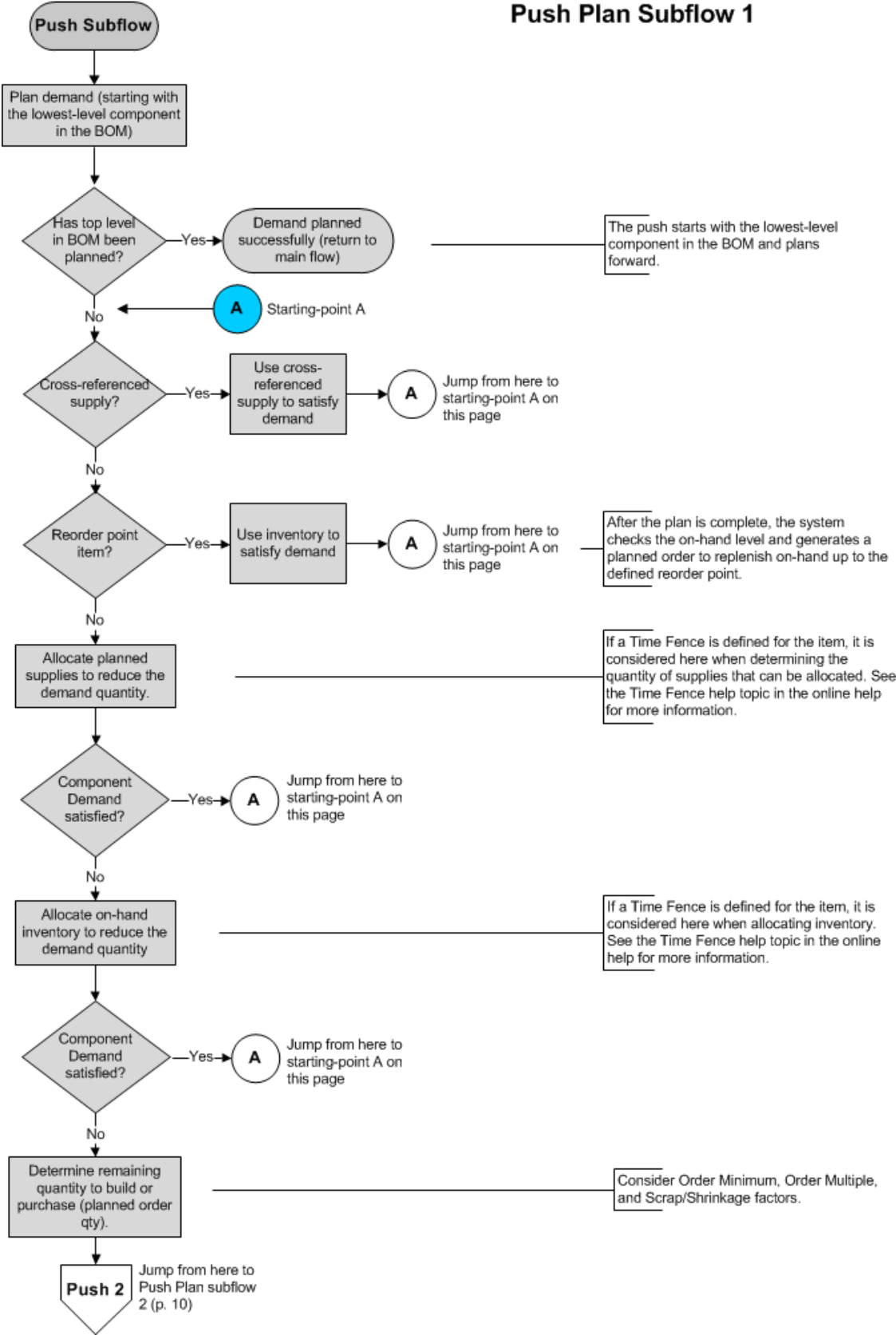
Pull Plan Subflow 4



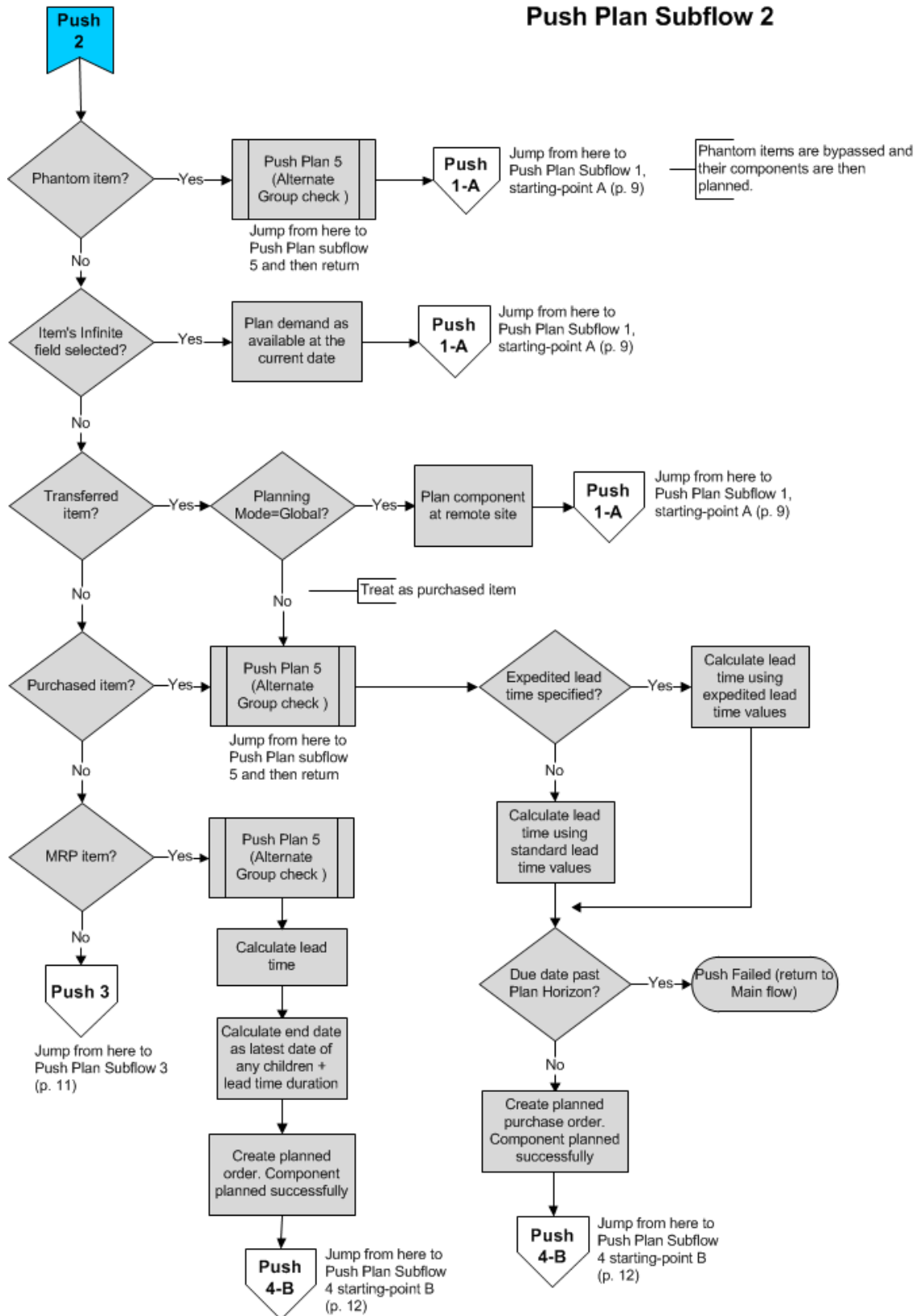
Pull Plan Subflow 5 (Alternate Group Check)



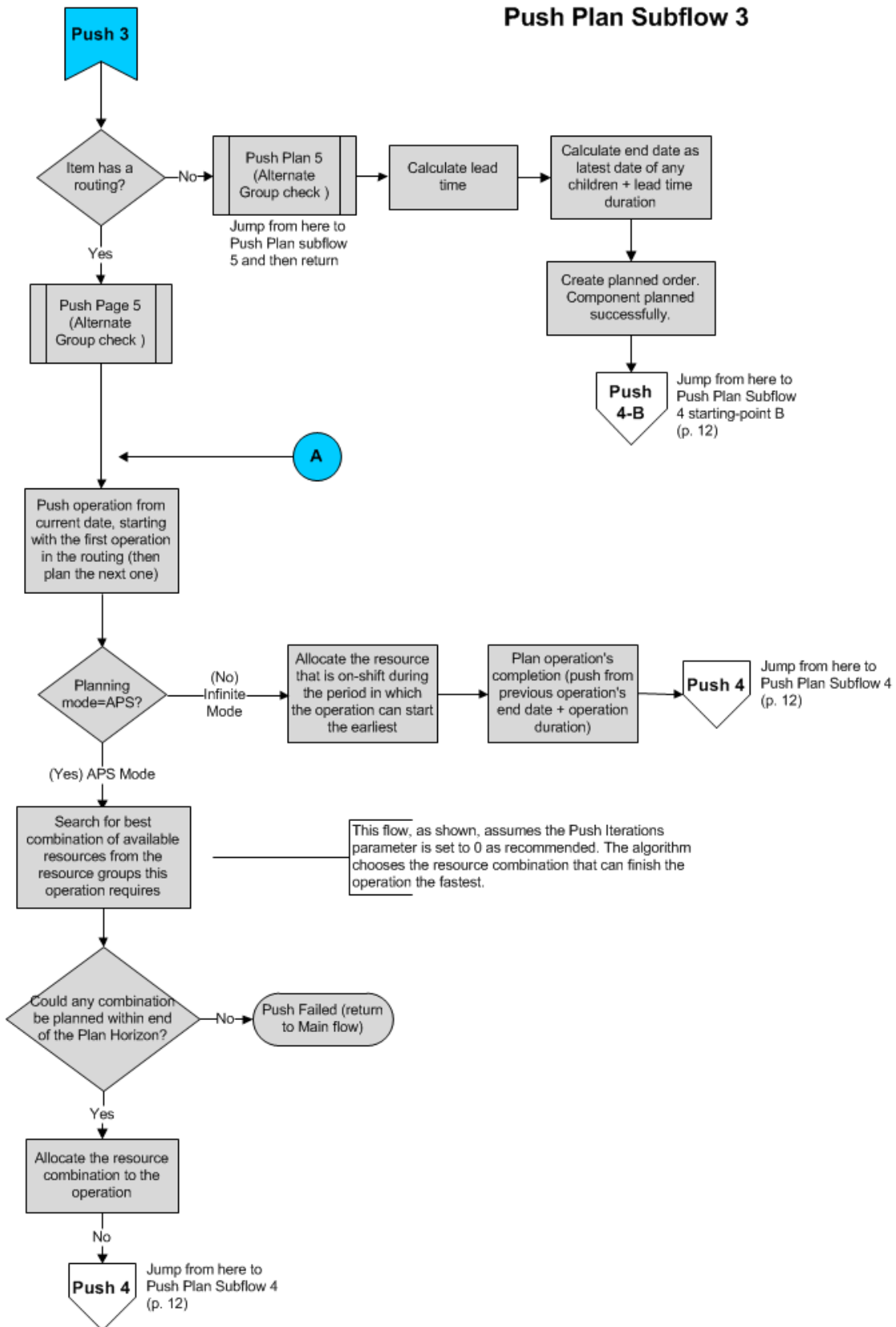
Push Plan Subflow 1



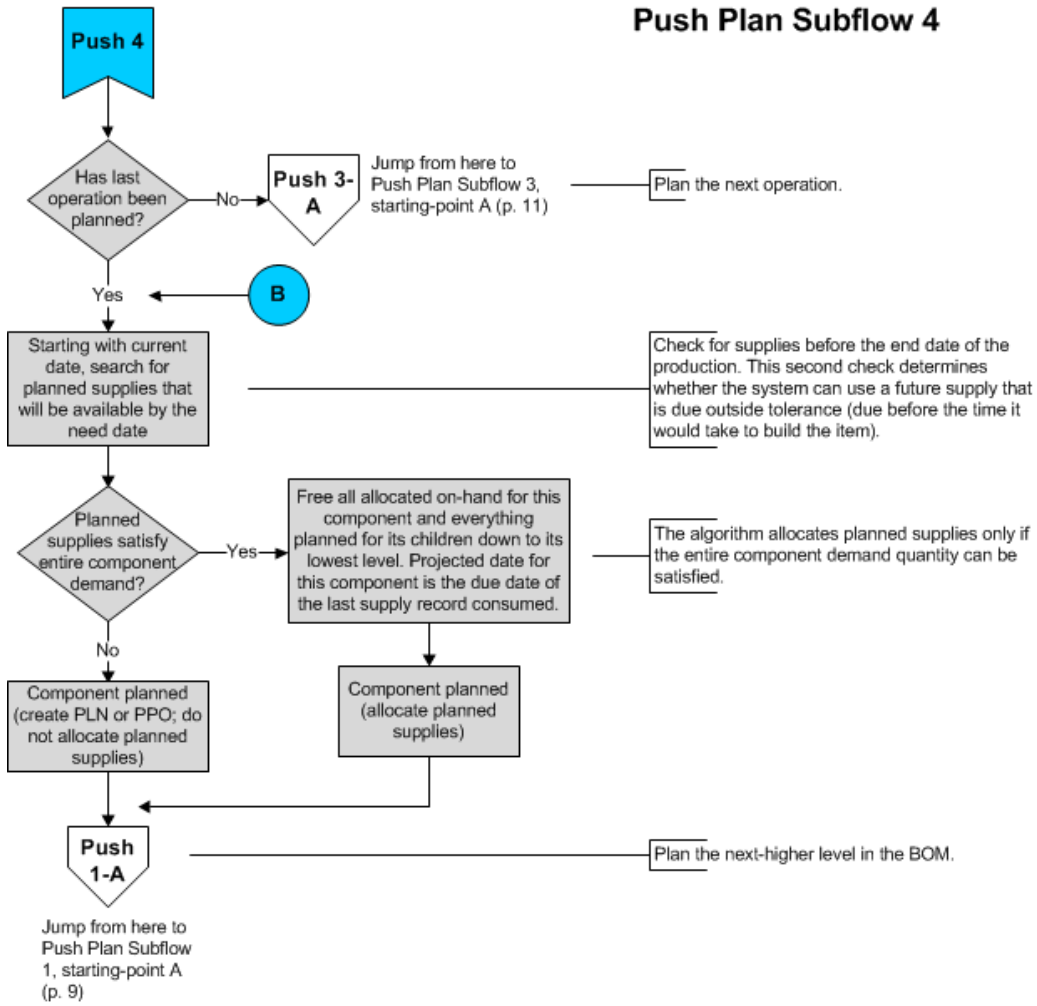
Push Plan Subflow 2



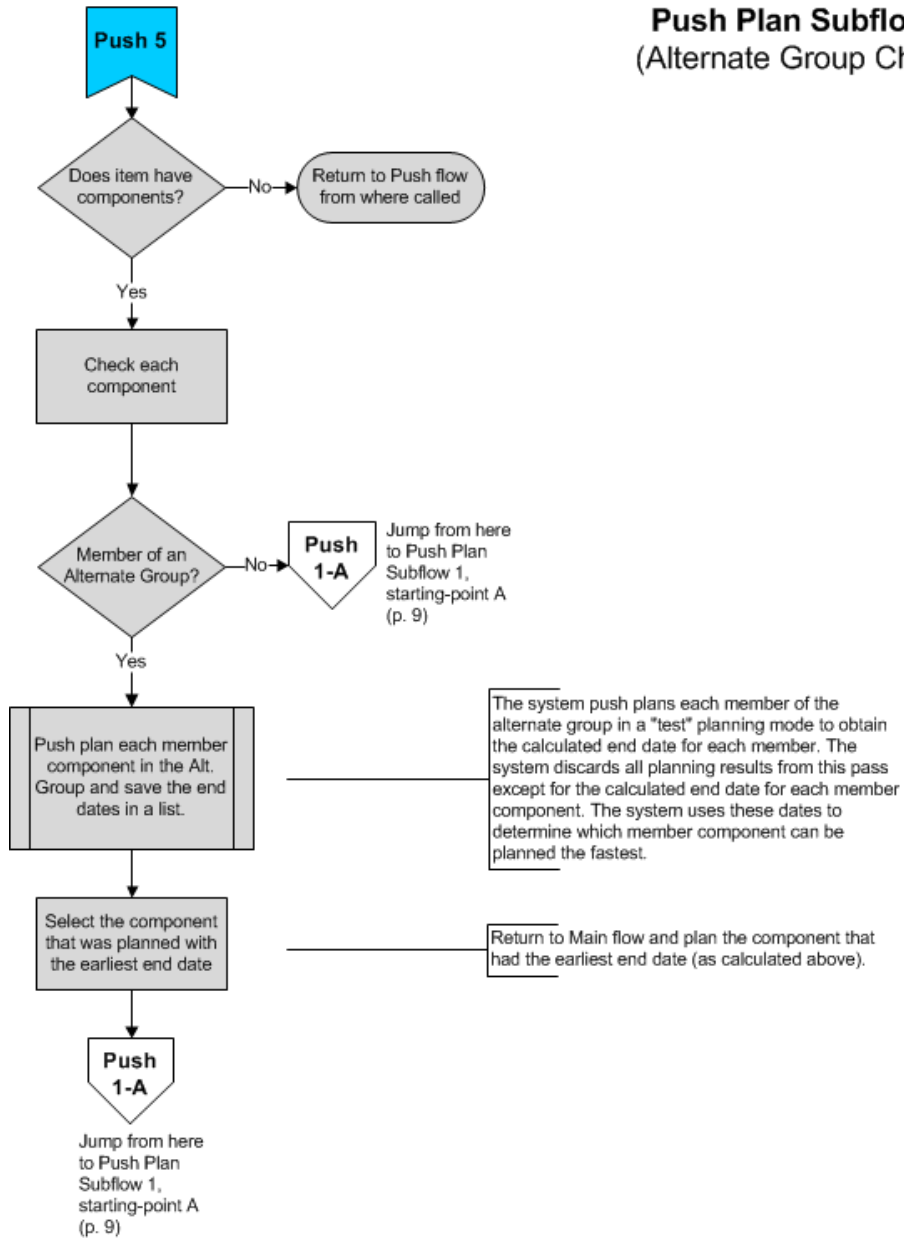
Push Plan Subflow 3



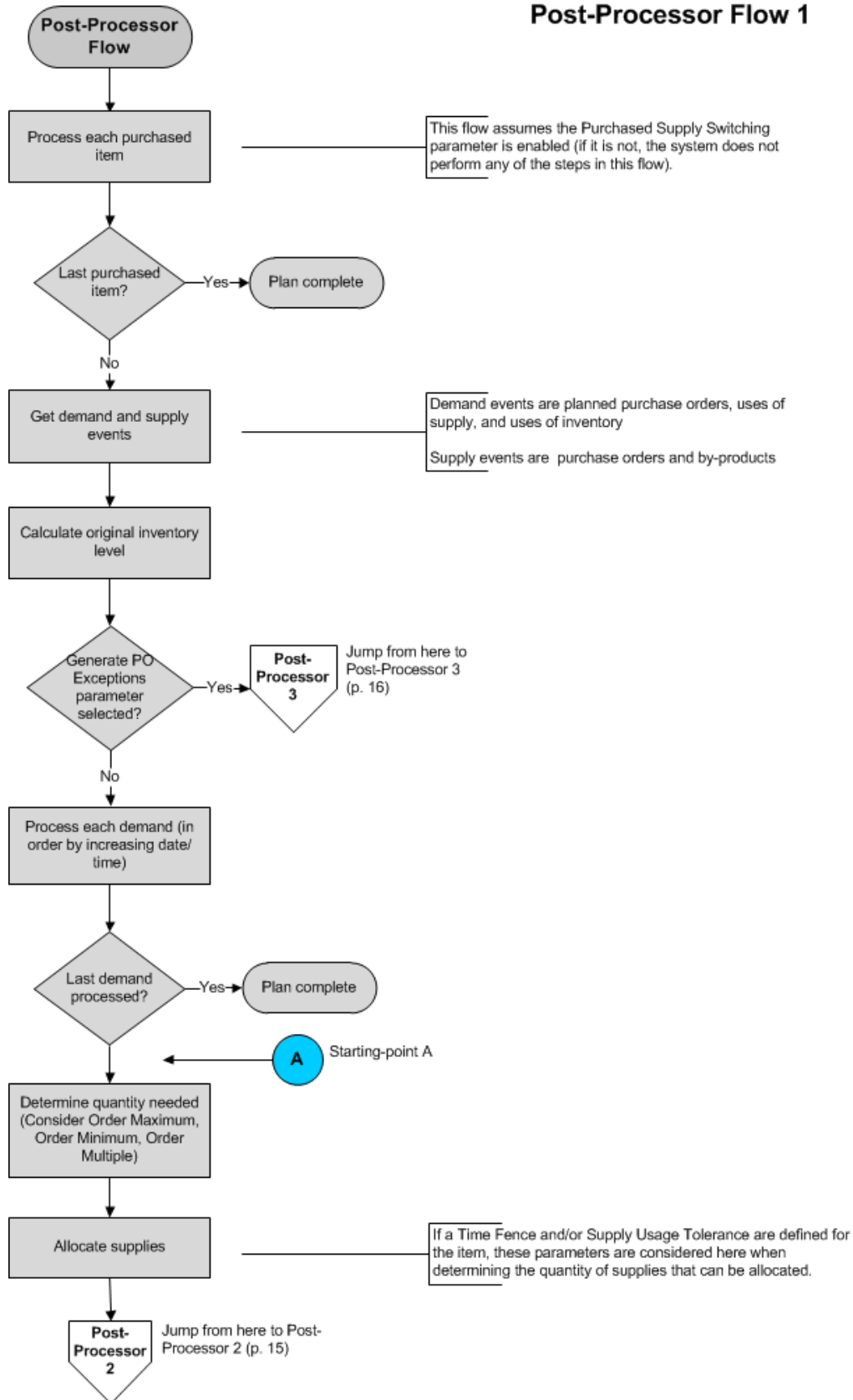
Push Plan Subflow 4



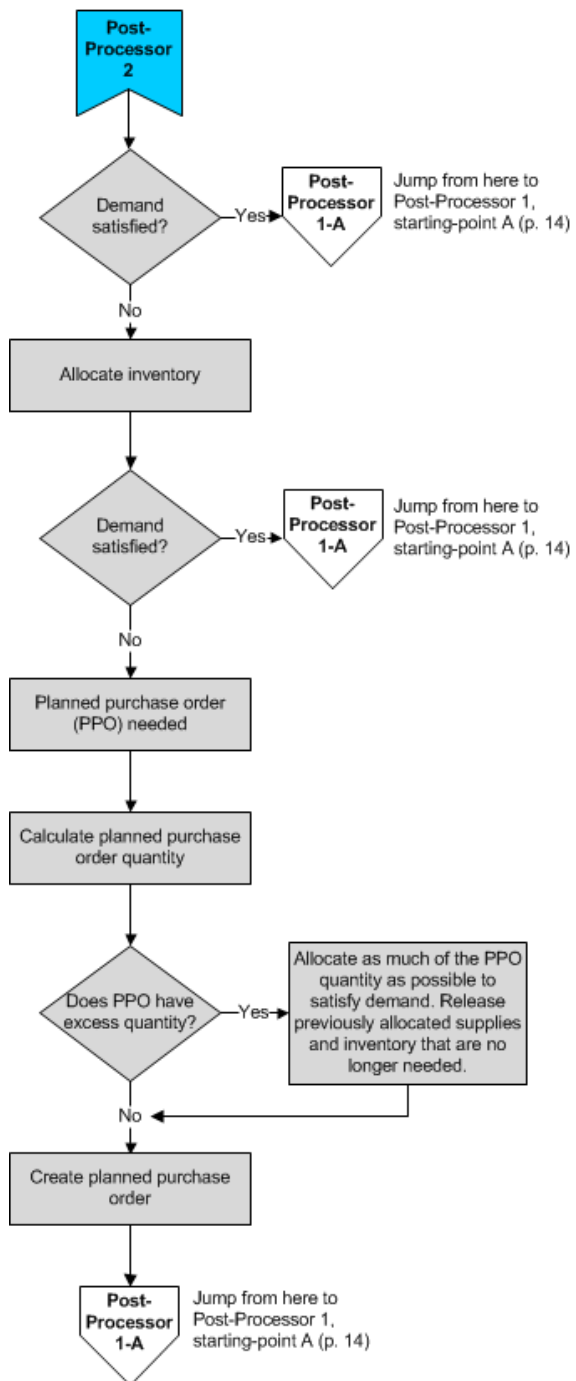
Push Plan Subflow 5 (Alternate Group Check)



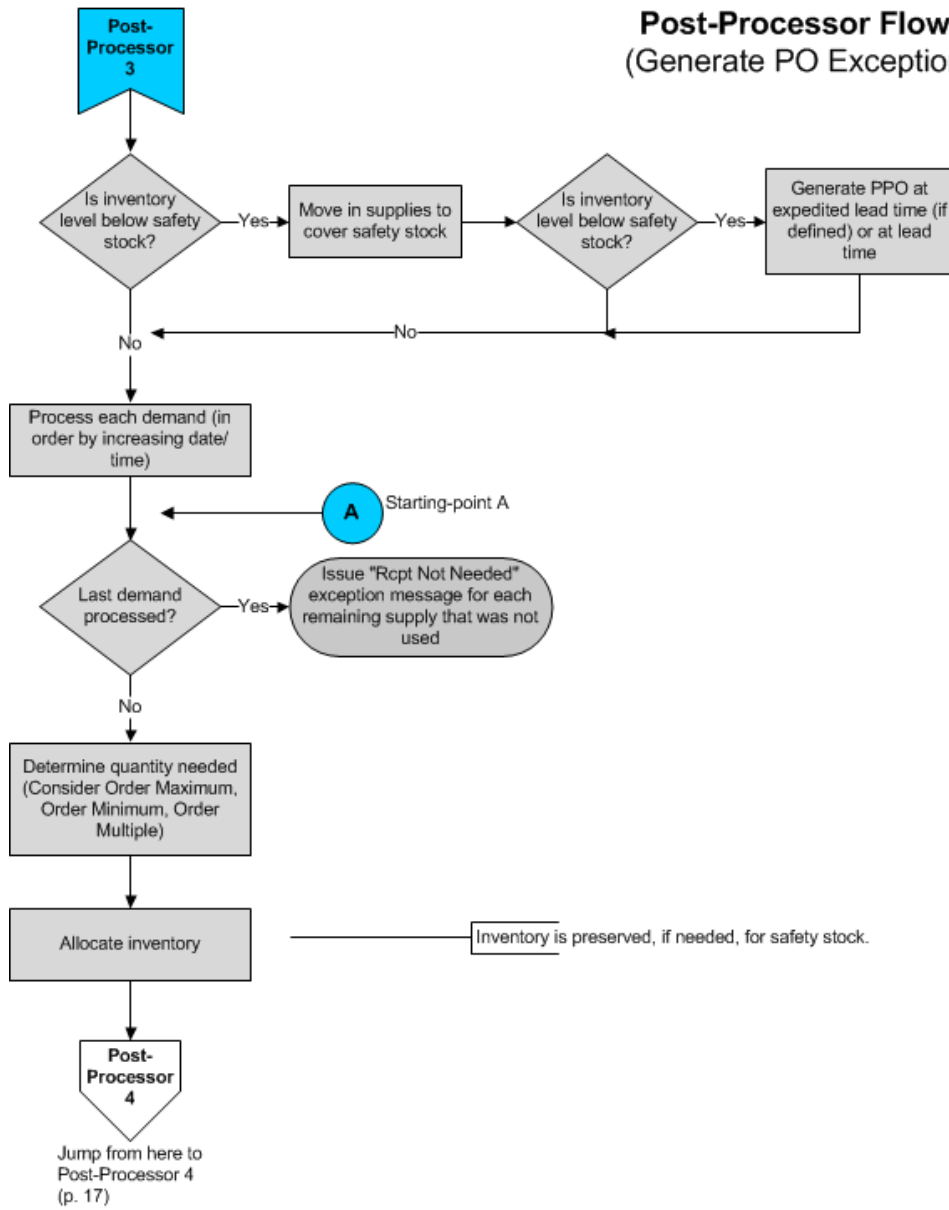
Post-Processor Flow 1



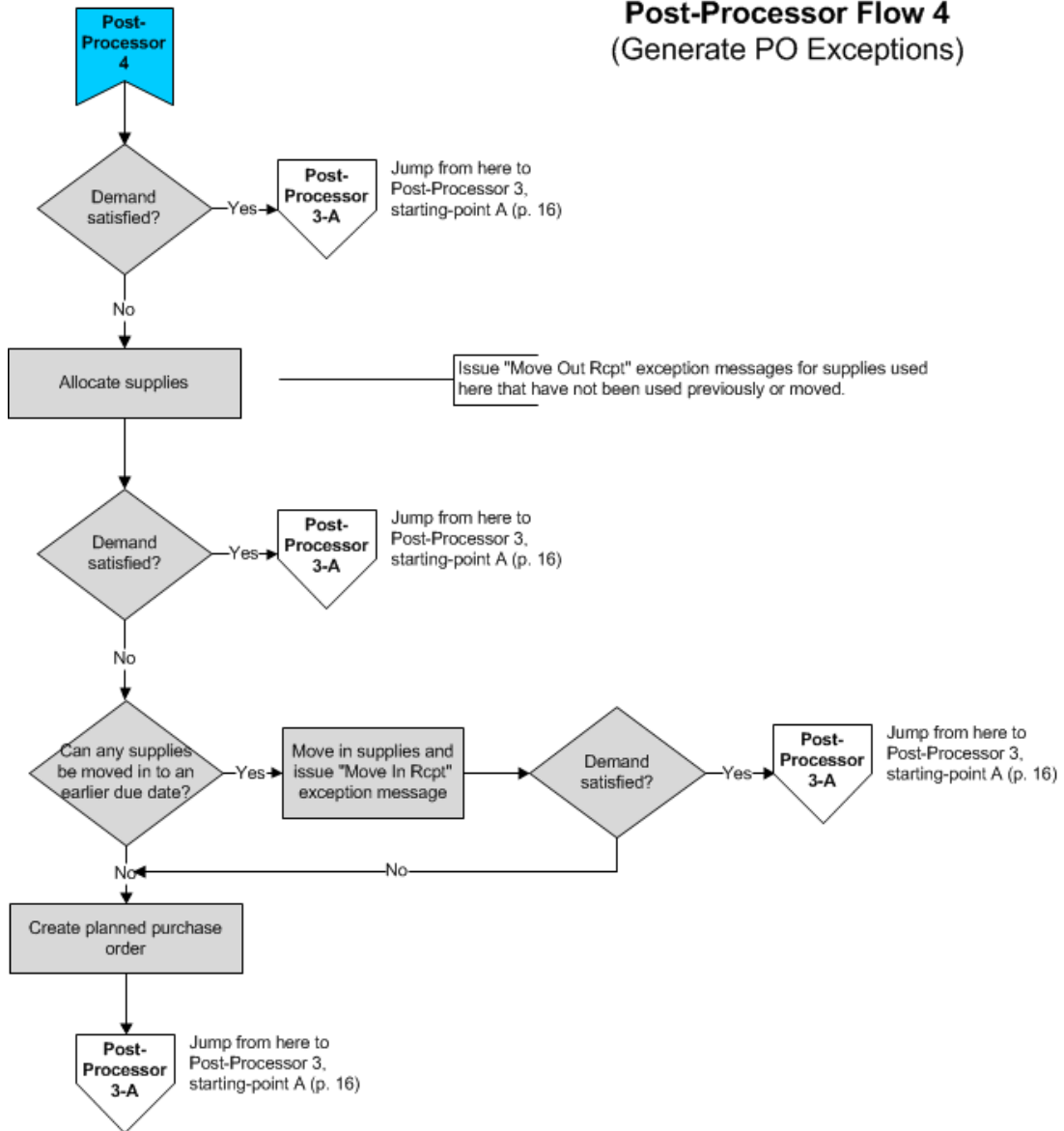
Post-Processor Flow 2 (Purchased Supply Switching)



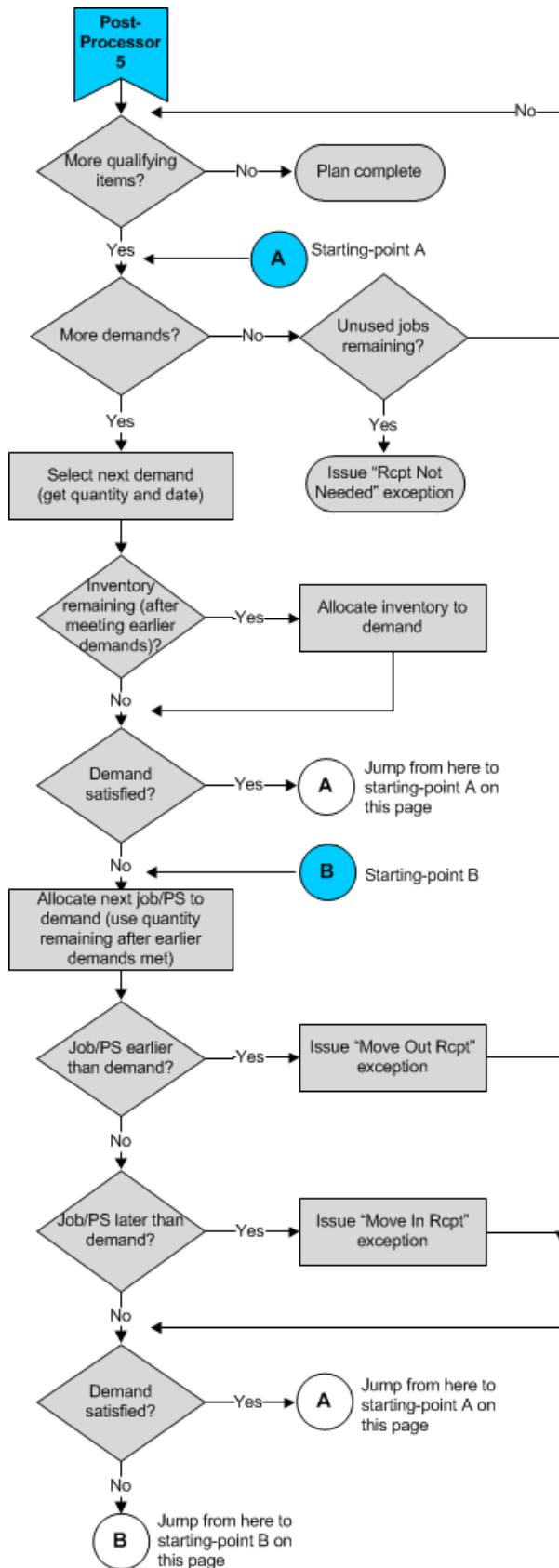
Post-Processor Flow 3 (Generate PO Exceptions)



Post-Processor Flow 4 (Generate PO Exceptions)



Post-Processor Flow 5 (Job and PS Supply Switching)



"Qualifying" items are not phantoms, not MPS items, and have the Accept Requirements planning parameter selected.

"Demands" in this case refers to instances of a demand allocating job/PS supply or on-hand inventory. These "usage events" are placed in a list, sorted in order of increasing time.

This post processor works in a "push" planning sequence, reallocating inventory and firm and released jobs and production schedule releases to demands in due date sequence.

The Move Out Rcpt exception is generated only if you are running in Infinite APS mode. If you are running in (finite) APS mode, an informational message is displayed instead.